



Fall 1997

Echoes from the Hill

Southwestern Oklahoma State University Office of Institutional Advancement and Alumni

Follow this and additional works at: <https://dc.swosu.edu/echoes>

Recommended Citation

Southwestern Oklahoma State University Office of Institutional Advancement and Alumni (1997) "Echoes from the Hill," *Echoes from the Hill*: Vol. 79: Iss. 2, Article 1.

Available at: <https://dc.swosu.edu/echoes/vol79/iss2/1>

This Article is brought to you for free and open access by the Magazines at SWOSU Digital Commons. It has been accepted for inclusion in Echoes from the Hill by an authorized administrator of SWOSU Digital Commons. For more information, please contact phillip.fitzsimmons@swosu.edu.

ECHOES FROM THE

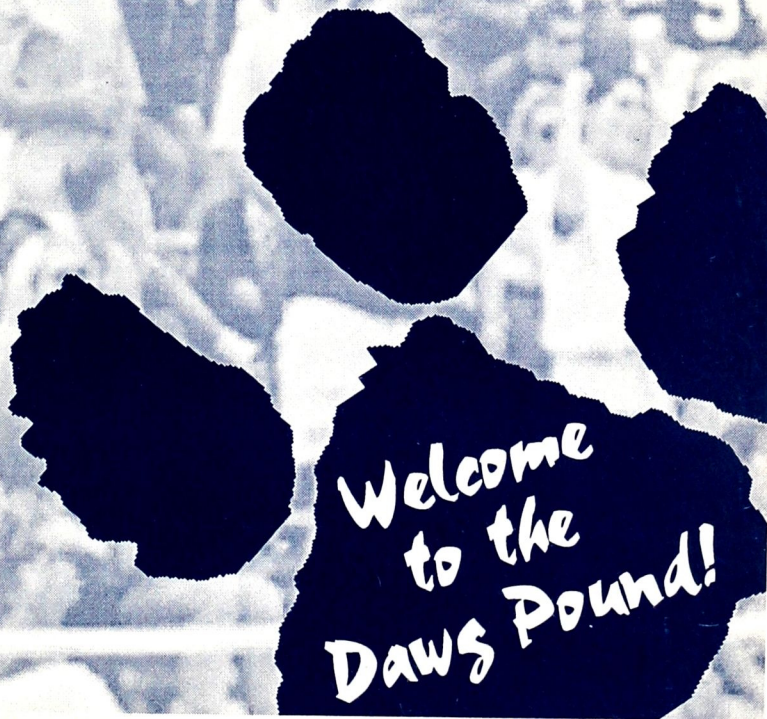
HILL

Vol. 79, No. 2

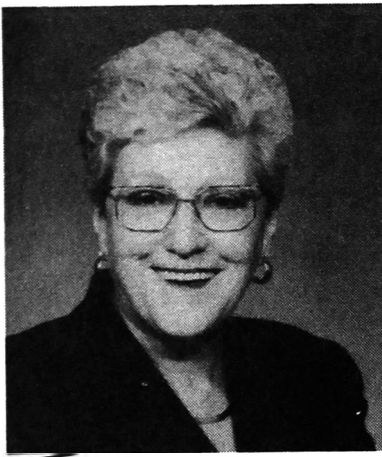
Southwestern Oklahoma State University

Fall 1997

MILAM STADIUM



Welcome
to the
Dawg Pound!



From the desk of the President...

Dear Alumni and Friends:

Fall is always an exciting time at Southwestern. The campus is teeming with students who bring a vitality that is contagious!

Howdy Week provides a variety of activities where students can "meet and greet" and begin friendships that will last a lifetime. The Organization Fair, sponsored by the Student Government Association and held on the grounds surrounding the Student Center, creates a flurry of activity as the student organizations and the local merchants decorate their booths. The steady stream of students, faculty, and staff makes for a festive environment and the beginning of a new academic year.

Unlike most campuses, Southwestern retains a traditional environment because of our student profile. Over two-thirds of our students are less than 24 years of age. A vast majority (79 percent) are full-time students. Nearly 60 percent of our students are female. Ninety-five percent are from Oklahoma, representing all 77 counties. There are 13 counties that have more than 100 students attending Southwestern. Our minority population continues a slow growth, representing 11 percent of our student body.

Strong academic programs have always been a cornerstone at Southwestern. This past year, three programs achieved national accreditation standards. Both the undergraduate and graduate programs in the School of Business are now accredited. The new occupational therapy assistant program offered on the Sayre campus received full accreditation status, and the technology program had an excellent exit interview and is eagerly awaiting final notice. The accreditation site visit for the social work degree program is scheduled for later this fall.

The Oklahoma State Regents for Higher Education approved four new associate degree programs for the Sayre campus, including two in criminal justice and two in computer science. Also the implementation of the doctorate of pharmacy program is slated for the summer of 1998.

There are lots of new faces among our faculty and support staff as those who were hired in the '60s continue to retire. I hope that you will "come back to the hill" for Homecoming and get reacquainted with the campus and meet the many dedicated people who make Southwestern an institution for the future.

Sincerely,

Joe Anna Hibler, President

Southwestern Alumni Officers

Don Weeks	President
Edd Painter	Out-Going-President
Johnny Beech	President-Elect
Richard Hasley	Secretary
Linda Redinger	Treasurer
Cheryl Lockstone	Parliamentarian
Jim Waites	Director

Board of Directors

Dr. E. Vann Greer Andrews
Teed Bishop
Brian Box
Todd Boyd
J. Gid Bryan
Larry Claxton
Paula Everhart Combs
Paul Conner
Lori L. Scott Dreiling
Don Elliott
Jim Litsch
Cindy Moore
Dr. Melani Mouse
Mike Muncy
Mike North
Ron Oldfield
Stan Powers
Peggy Prock
Roger Pryor
Susan Regier
Don M. Roberts
Otis Sanders, Jr.
Alan Spies
Charles G. Torbeck, II
Rouben Tourian
Basil Weatherly
Jana Mumford Welch
Zack Widener
Kurt Winden
Harold Wright

Ex-officio Members

Ed Berrong
Dr. Joe Anna Hibler
Lucille North

Inside

...Special interest

2 Standout alumni honored

Pharmacist, doctor and educator recognized

5 Administrative positions filled

Dr. Bill Kermis named Academic Vice President

...The Normal

The Normal is offered each semester to promote an interest in the historical development of Southwestern with special emphasis on the early years when the it functioned as a normal school.

...Foundation Newsletter

Scholarship endowment established

Haxel Exline's gift created to help students

Chamber of Commerce raises money

Local merchants contribute close to \$11,000

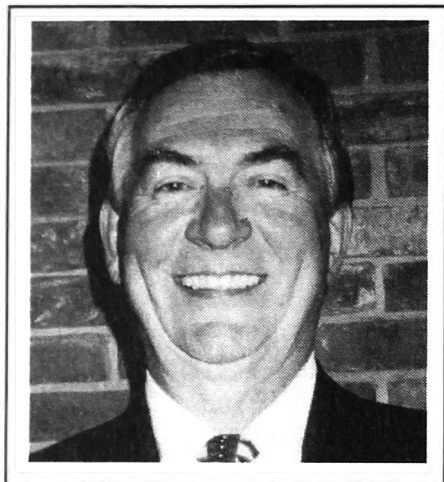
ECHOES from the Hill

Editor.....	Jena Skarda
Alumni Director.....	Jim Waites
Public Information Director.....	Brian Adler

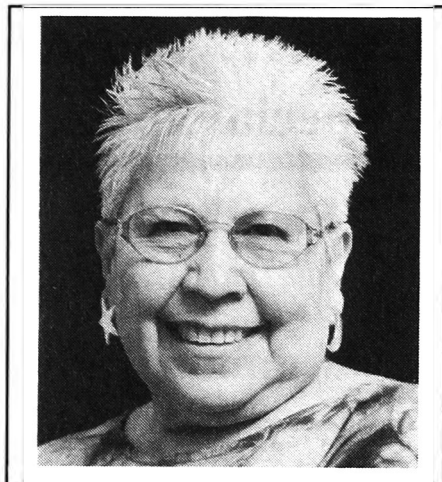
Echoes from the Hill is published semiannually by the Southwestern Oklahoma State University Office of Development and Alumni. This publication, printed by the University Press, is issued by Southwestern Oklahoma State University as authorized by Dr. Joe Anna Hibler, President. A total of 18,000 copies have been prepared for distribution at a cost to the taxpayers of the State of Oklahoma of \$24,300. Third class postage is paid at Weatherford, OK., 73096 under permit 57. Change of address notices and other correspondence should be sent to Office of Development and Alumni, Southwestern Oklahoma State University, 100 Campus Dr., Weatherford, OK., 73096.

This institution, in compliance with Title VI of the Civil Rights Act of 1964, Executive Order 11246 as amended, Title IX of the Education Amendment of 1972, and other federal laws and regulations does not discriminate on the basis of race, color, national origin, sex, age, religion, handicap, or status as a veteran in any of its policies, practices or procedures. This includes, but is not limited to admissions, employment, financial aid and educational services.

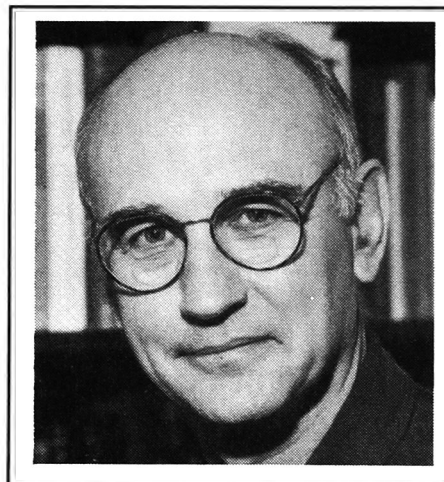
Hall of Fame honors talented trio



Keith Dodson



Henrietta Mann



Richard L. Morris

Three alumni of Southwestern Oklahoma State University will be inducted into the university's Distinguished Alumni Hall of Fame during homecoming activities Oct. 3-4 on the Weatherford campus.

Pharmacist Keith Dodson of Altus; higher education faculty member Henrietta Mann of Missoula, Mont.; and plastic surgeon Richard L. Morris of Knotts Island, N.C., will be honored at a variety of functions during homecoming weekend.

Keith Dodson is a 1961 graduate of Southwestern Oklahoma State University's School of Pharmacy.

Since 1961, he has been a partner and operator of Bunker Hill Drug in Altus. In addition, he shares a partnership in the United Drugs of Altus, Elk City and Purcell as well as the Rexco Drugs of Altus and Yukon.

Dodson was the Bowl of Hygeia National Pharmacy Award winner for Oklahoma in 1993. This prestigious award recognizes outstanding community service performed by a pharmacist. He has been a board member and past president of both the Oklahoma Board of Pharmacy and Pharmacy Providers of Oklahoma. He is also a member of the National Association of Retail Drug-gists and has been a member of the NARD national steering committee.

A charter member of the Oklahoma Pharmacy Heritage Society, Dodson has also served as president of the organization. He is a past president of the

SWOSU School of Pharmacy Alumni and the SWOSU School of Pharmacy Advisory Board. In 1980, he was named the Outstanding SWOSU Pharmacy Alumnus Award winner. Dodson has also served as a preceptor for the SWOSU Pharmacy School since the professional rotation program was started at the Weatherford university.

Dodson is a lifetime member of the both the SWOSU School of Pharmacy Alumni Association and the SWOSU Alumni Association.

Dodson's community activities include being very active with the First United Methodist Church, Jackson County United Way and the Altus Chamber of Commerce. He is a charter member of the Altus Public School Foundation and is a two-time past president of the Altus All Sports Association.

In his spare time, Dodson likes to travel as well as collect and restore Studebakers.

The honoree is a native of Olustee. He attended the Altus school system for 12 years and graduated in 1957. He and his wife, Judy, have been married for 35 years. They have three children: Debbie, a teacher at Altus High School; Mark, SWOSU pharmacy graduate who works as a pharmacist at Bunker Hill Drug; and Scott, a fourth year computer science major at SWOSU.

Henrietta Mann (formerly Whiteman) teaches at the University of Montana in Missoula where she is a full professor of Native American

Studies. She is a full-blood Cheyenne enrolled with the Cheyenne-Arapaho Tribes of Oklahoma.

In 1986, she was the first Indian woman to serve as deputy to the assistant secretary of the Bureau of Indian Affairs. She has served as national coordinator of the American Indian Religious Freedom Coalition in Washington, D.C. She was also a Danforth Foundation Fellow.

The University of Colorado selected Dr. Mann as its 1991 recipient of the Eugene Kayden Award for the best manuscript in the humanities. In 1983 she was selected as the Cheyenne Indian of the Year at the American Indian Exposition in Anadarko (OK) and, in 1987, was honored as the National American Indian Woman of the Year. *Rolling Stone* magazine in 1991 named her one of the 10 leading professors in the nation.

She has lectured extensively throughout the United States as well as other countries around the world. In addition to the University of Montana, she has also taught at other universities including the University of California at Berkeley; Haskell Indian Nations University in Lawrence, Kan.; Stanislaus State College in Turlock, Calif.; California State College in Hayward; and in the Graduate School of Education of Harvard University. Her higher education experience also includes adminis-

Continued page 3...

Continued from page 2

tering a summer Indian Studies Program at the University of Science & Arts of Oklahoma.

Mann received her bachelor's degree in English education from Southwestern in 1954. She completed her master's degree in 1970 from Oklahoma State University and earned her doctorate from the University of New Mexico in 1982.

Richard L. Morris is a native of Weatherford and son of former SWOSU Academic Vice President Louis Morris and his wife, VaNita. Morris is a 1962 graduate of Southwestern and a 1959 graduate of Weatherford High School.

Morris has been involved in pioneering microvascular surgery. He developed the microvascular surgery training program at Duke University and wrote and illustrated one of the first laboratory manuals

for that type of surgery.

His first position as a plastic surgeon came in 1979 when he was an assistant professor at the Medical College of Georgia. He later joined a practice in Virginia Beach, Va., for six years and then built his own office.

Morris pioneered several liposuction techniques and helped found Lipolysis Society of North America. His practice has developed into a mostly cosmetic surgery practice.

During his years at Southwestern and the University of Oklahoma Medical School, Morris worked his way through college by doing various jobs including farming, sign painter, research assistant, curator for research animals and janitor. During his medical internship at St. Anthony Hospital, he was drafted by the U.S. Army. He spent nine years in the service attaining the rank of lieutenant colonel in the medical corps.

Morris has been involved in recon-

struction work, especially with children. Several of the surgeries were gifts from the heart with no money or media coverage allowed. He operated recently on two children from Venezuela, one child with a congenital, hairy nevus covering half of her face and the other a 5-year-old boy who was a victim of burns of the face, neck, chest and arms. He also helped a 7-year-old child who suffered a dog bite to the upper lip. The dog bit the lip completely off. Morris reattached the lip and applied medical leaches to bring back the blood supply. The child now looks beautiful and can only notice a very fine scar above the upper lip.

Morris recently moved with his family to Knotts Island, N.C., where he is renovating the historic Currituck Gunning and Fishing Club. He and his wife, Kate, have six children: John, Shawn, Allison, Jonathan, Erin and Kaitlin. Morris's hobbies include sculling, running, fishing and art.

Parade Watch Party Locations

Benchwarmer Brown's: Apple Bowl 20 year reunion

Butcher's Clothing Co.: Beta Tau Beta, Tri J's and Phi Kappa Alpha

Java's: Art department and music department

Delicious Designs: School of Education, math department

Edward Jones: School of Business, Phi Beta Lambda, marketing/management club and Circle K club

Hooked on Books: Physics department and computer science department

Kelley Jewelers: School of Pharmacy and Pharmacy fraternities: Kappa Epsilon, Kappa Psi, Phi Delta Chi, Phi Lambda Sigma, Rho Chi, Division of Nursing and Health Information Management

The Kloset: Home economics alumni, language arts department and Canterbury Association

Dusty Rose: Kappa Delta Omega and psychology department

Nabor's Shoe Center: Baptist Student Union

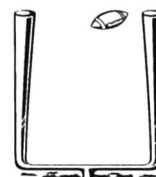
New Life Bookstore: Church of Christ Student Center and Chi Alpha Gamma Delta

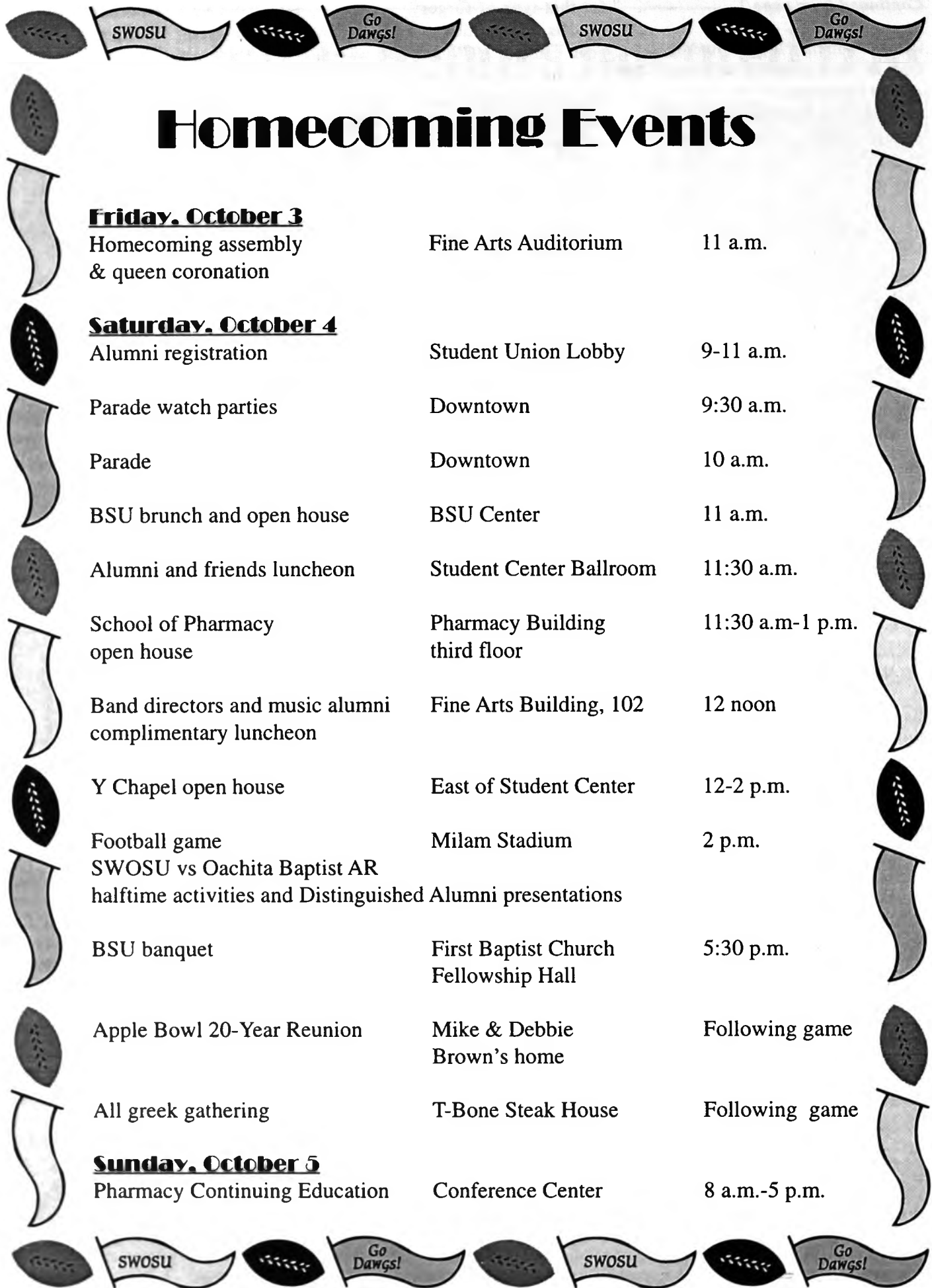
The Pink Turtle: Chemistry club, biology club and Wesley Foundation

The Smart Shop: Gamma Delta Kappa

Sharon's : Sigma Sigma Chi, HPER department and graduate students

Tautfest: Social science department and Catholic Student Association





Homecoming Events

Friday, October 3

Homecoming assembly
& queen coronation

Fine Arts Auditorium

11 a.m.

Saturday, October 4

Alumni registration

Student Union Lobby

9-11 a.m.

Parade watch parties

Downtown

9:30 a.m.

Parade

Downtown

10 a.m.

BSU brunch and open house

BSU Center

11 a.m.

Alumni and friends luncheon

Student Center Ballroom

11:30 a.m.

School of Pharmacy
open house

Pharmacy Building
third floor

11:30 a.m.-1 p.m.

Band directors and music alumni
complimentary luncheon

Fine Arts Building, 102

12 noon

Y Chapel open house

East of Student Center

12-2 p.m.

Football game
SWOSU vs Oachita Baptist AR
halftime activities and Distinguished Alumni presentations

Milam Stadium

2 p.m.

BSU banquet

First Baptist Church
Fellowship Hall

5:30 p.m.

Apple Bowl 20-Year Reunion

Mike & Debbie
Brown's home

Following game

All greek gathering

T-Bone Steak House

Following game

Sunday, October 5

Pharmacy Continuing Education

Conference Center

8 a.m.-5 p.m.

Kermis accepts VP position

Dr. Bill Kermis, associate vice president and dean of the graduate school at Southwestern since 1991, has been approved as academic vice president. Kermis replaces Dr. Bob Brown who retired June 30.

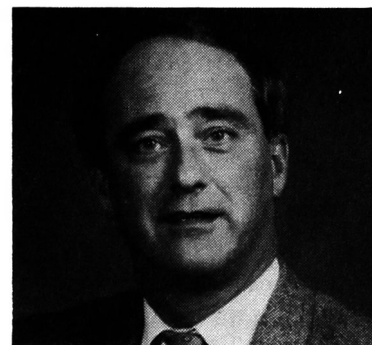
Kermis came to Weatherford from Northwest Missouri State University where he served as chairperson of the division of curriculum and instruction for two years. From

1987-89, Kermis served as director of the Center for Science, Mathematics and Technology and was associate professor at the University of Massachusetts.

The native of Rochester, N.Y., also served as associate professor at The State University of New York in 1986-87 and was an assistant professor at the University of Texas from 1980-86. He has taught at Syracuse University and has

had experience at the high school and middle school levels where he taught honors chemistry and mathematics.

Kermis earned his bachelor's degree in psychology and chemistry in 1972 from Fort Lewis College of Colorado. He then received his M.S. degree in 1974 and Ph.D. six years later, both from Syracuse. Kermis has been active in Leadership



Bill Kermis

Oklahoma, the Weatherford Area Chamber of Commerce and numerous other organizations. His list of scholarly activity accomplishments is extensive.

Three familiar faces fill administrative openings

Three positions were filled recently at SWOSU. Dr. Lowell Gadberry has assumed the position of chair of the department of school service programs in the School of Education on an interim basis, while long-time Weatherford resident Matt Berry has been named director of sponsored programs at Southwestern.

A former Weatherford Public Schools superintendent, Moss, will serve as interim dean of the School of Education during the 1997-98 academic year. He has

been a member of the SWOSU faculty since 1995 and served as chair of the de-

partment of school service programs during the 1997-98 academic year. Moss replaces Dr. John Folks who resigned to take

school service programs department, Gadberry will continue his duties as chair of the department of elementary/secondary programs.

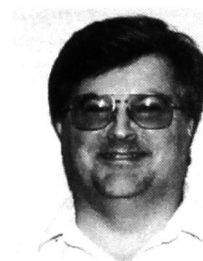
Berry has been an employee at Southwestern since 1984. He worked in the library until 1993 when he took an accounting position in the business office. Berry takes over his new position from recently-named Academic Vice President Dr. Bill Kermis, who held the sponsored program position along with other duties.



Lowell Gadberry



Greg Moss



Matt Berry

partment of school service programs during the 1996-97 academic year.

A national search for the dean's position will start dur-

a superintendent's position in the Houston, Texas, area.

Gadberry has been at Southwestern since 1981. In addition to heading up the

New dean of students named, coming from OSU campus

Darin K. Behara has been named dean of students at Southwestern. Behara comes to SWOSU from Oklahoma State University where he worked in the area of student life since 1992, including serving as Coordinator of Greek Life at the Stillwater university.

He was involved in developing and implementing conduct policies and served on the steering committee

for OSU's student affairs freshman orientation program which helps incoming students make academic and social adjustments for collegiate life.

He was active in the freshman orientation program at OSU and served as an instructor. Behara has worked with several task forces on fire safety, sexual awareness, alcohol safety education and life

skills programming.

Behara has also been active in the Oklahoma College Student Personnel Association as well as a volunteer in causes for the Oklahoma Special Olympics, American Diabetes Association and March of Dimes.

He served as advisor for the OSU interfraternity and panhellenic councils and their respective executive officers, committees and

programs. Behara also served as liaison for the OSU Greek System on several alumni, national and international organizations.

Behara received his bachelor of science degree in political science from OSU in 1990 and completed his master's degree in curriculum and instruction education, also from OSU, in 1992.

Behara is a 1985 Ponca City High school graduate.

University begins managing Crowder Lake, park director to oversee project

Southwestern Oklahoma State University took over management of Crowder Lake State Park, located eight miles south of Weatherford, on Aug. 1, and Clinton resident Chad Kinder has been hired as park director of the facility.

The contract between SWOSU and the Oklahoma Department of Tourism was approved at the July meeting of the Board of Regents of Oklahoma Colleges.

SWOSU President Joe Anna Hibler said no money from the educational budget will be used in the project. Fees and an allocation from the tourism department will help operate the facility.

One of the functions of

the university is public service," Hibler said. "As talks accelerated of the possible closing of Crowder Lake, we became concerned about the park not being available for the people of western Oklahoma as well as the university for its instructional and recreational services."

The tourism department has been talking with SWOSU officials for two years to take over operation of Crowder Lake State Park.

The facility is used by the university for various health, physical education and recreation department classes and internships, intramurals, campus activities and groups, and summer camps.

Crowder Lake State Park

is also used by public school groups, the State Office of Juvenile Affairs and public school alternative education programs as well as the general public. A ropes course, which was recently added, has been a popular activity for many area residents.

Past history indicates a yearly park usage of between 60,000 and 70,000 individuals, according to Hibler.

Kinder, the new park director, has been teaching in the Clinton Public School system since 1994. He was the Clinton Middle School Teacher of the Year in 1996. The 1989 Clinton High School graduate also taught one year at Custer Public Schools before go-

ing to Clinton.

Kinder is a 1993 graduate of Southwestern where he graduated cum laude. He also earned his master's degree of education in 1995, also from SWOSU.

In addition, Kinder has earned the aquatics specialist and outdoor education specialist certificates from Southwestern. He is a YMCA certified assistant SCUBA instructor and has been active as a lifeguard/first aid/CPR instructor for the Custer County Red Cross and Clinton public pool.

Southwestern will have a person, SWOSU campus security officer Larry Cagle, living in the house located at Crowder Lake.

Nursing student spends summer at Mayo Clinic

Southwestern nursing student Towana Ernst of Flint, Mich., participates in an opportunity which should benefit her upcoming nursing career.

Ernst will participate in a two-month internship program at the Mayo Clinic in Rochester, Minn. Her assignment is in orthopedic surgery.

Ernst is one of 102 students selected from over 500 applications for the summer internship program at the well-known clinic. A total of 97 different universities from across the United States will have students in the program which is open to bachelor of science nursing students between their junior and senior years.

"This should be a valuable experience," Ernst said. "I feel the Mayo Clinic is at the forefront of medical

"This should be a valuable experience."

—Towana Ernst

treatment and breakthroughs. My internship should give me a broad perspective to bring back to my work here at Southwestern."

Ernst started June 9 and continues at Mayo through August 15. She will start with a two-week orientation session followed by eight weeks of floor training.

The 43-year-old Ernst is

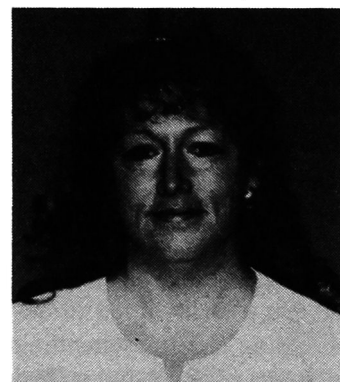
not your traditional college student. She is originally from Michigan, got married at the age of 18 and started a

family. She did not go to college until later in life, earning an associate degree in applied science with emphasis on interpreting for the deaf. She then started working for several doctors in Flint. That is when she decided she wanted to become a nurse.

Ernst ended up in Oklahoma because her children wanted to attend college in Oklahoma. She ended up in the Weatherford area when husband Randy took a pastorate at Custer City. He is

now associate pastor at the Weatherford Church of the Nazarene. Ernst started school at Southwestern in January, 1996.

Ernst said she is proud to represent Southwestern and hopes some junior nursing student will follow in her footsteps at Mayo next summer.



Towana Ernst

Alumni Association lists members—join today!

Lifetime Couples

Mary Abercrombie
Hawkins and Nancy Adams
Tom and Janie Aday
Gary and Edie Akin
Arch and Bonnie Alexander
Dwayne and Vivia Arndt
Jeff and Tonya Arnold
James and Frankie Bailey
Irvin E. and Gertrude Barber
James R. Bates
Joe and Bonnie Battles
Richard and Madeline Baugher
James E. Beasley
Johnny and Judy Beech
Gary L. and Cheryl Bell
Michael E. Bennett
Michael and Kim Neff Bennett
Mark D. and Jan Bergen
Dr. Bill and Theta Juan Bernhardt
Brad and Jeanine Berrong
Ed and Winnie Ola Berrong
Mark and Connie Berrong
Ken Bibb
Paul and Elmenette Bivens
Richard R. and Melanie Bixler
Darrel W. and Diane Bose
Edgar W. and Caroline Brady
John H. and Linda Bredehoff
Bill K. and Suzie Brewster
William H. and Kaye Brogden
Farris L. and Betty Brookman
Bill and audie Brooks
Mike D. and Debbie Brown
H. Blanton and Faith Brown
Bobby W. and Tany Brown
Marian Bryant
Ed and Kay Buie
Gene Burch
D. Hoyt and Kim Burcham
Stuart and Carolyn Burehett
Maxine Burchfiel
Michael H. and Maurine Butts
Victor Dale and Amy Caudle
Fred J. and Ann Caudle
Stanley L. and Joyce Chapman
Tate and Deborah Chesney
Larry and Judy Clowdus
Jim R. and Patricia Cochran
Dean and Carolyn Copeland
Allen and Gloria Covalt
Sammie Cox
Lamar and Opal Hampton-Crall
Sherman and Willa L. Crawford
Howard and Kathryn Crisp
James G. and Maxine Crook
Keith and Kimberly Crosby
Bill and Meredith Cunningham
Frances Curb
Richard and Dana Darby
Marvin and Marilyn Daugherty
Marion and Dolores Davidson
Dr. Bill and Faye Davis
James P. and Mary Jean Dawson
Bill and Laverna Dawson
Michael and Elizabeth Deimund
Roy D. Virginia Dick
James and Rosemary Dick
Douglas and Sandra Dickerson
C. Garland and Hazel Dickerson
M. A. Diel
Keith and Judy Dodson
Larry K. and Sharon Duffy
L. Pat and Carlyon Dunn
Bob G. and Phoebe Eaton
Tyron S. and Letty Eby
Jerry and Donna Evans
Doyle and Betty Fenn
Lois B. Fisher
Paul and Dottie Flick, Jr.
Gary L. and Carol Ford
Douglas R. and Nancy Fowler
Danny and Ann Frame
Doug and Elaine Fransen
Alice Lea Freeland
Sherman and Imogene Freer
Bob and Nancy Gallop
J. M. and Eunice Gamble
Ed and Mary Garrison
J.R. and Sarena Gilliland
David L. and Ann Gillingham

Leonard I. and Dorothy Gillingham
Charles R. and Pauline Gillingham
Keith and Dr. Norma Glasgow
Jamie M. and Juanita Goad
Charles and Beth Graft
Jessie Graves
Stephen and Melinda Griffin
Jerry W. and Shawn Grizzle
David A. and Elizabeth Grinn
Clark and Vivian Hall
Earl W. and Mable Hamburger
Gary L. and Susan Hamburger
W. E. and Betty Hamilton
Dr. Donald and Jean Hamm
James R. and Pam Hargis
Vern and Yaita Harris
Darryl L. and Carly Haynes
Ruth A. Heatley
Harvey A. and Betty Heffel
Ross and Melba Hensley
Donald V. and Glenna Hertzler
Doyle E. and Roberta High
Larry and Merle Hilburn
Robert L. and Donna Hilton
Leroy and Juana Hipkins
Kenny W. and Cynthia Holloway
John M. and Debbie Hubanks
Mitchell R. and Ann Hull
Lowell M. and Norberta Irby
Garvin A. and Ellen Isaacs
W. L. and Gwen Jackson
Harold W. and Margaret Jackson
Doyle D. and Fay Jackson
Jerry and Frankie Jameson
Fred G. and Doris Janzen
Don Johnson
Cecil and Zola Jones
Marjorie and Wayne Jones
Michael and Lily Kendall
Bobby and Betty Klaassen
Skip and Jo Klingman
Mrs. Ned Kysar
Pearl Laxson
Gary and Marlene Leddy
Anthony L. and Shirlene Lenz
Darill and Janelle Leverett
Danney C. and Janice Lidia
Dean and Wylodean Linder
Jim D. and Peggy Litsch
Larry and Glenda Lobaugh
Verlin L. and Jacqueline Long
Joanne Long
Jim and Jeanne Loomis
John A. and Jacqueline Ludrick
Bob R. and Joan Mahnken
William T. and Vicki Malone
Charles W. and Sara Marquis
John W. and Clara Mathews
Don R. and Betty Mathews
Max G. and Bettye Jo Maupin
John M. and Joyce May
Carlos Dale and Joyce McBride
Rodney and Donna McCrory
Raymond L. and Verda McKellips
Monte and Vickie Meacham
Leo and Jerry Meece
Max and Linda Megli
Lavern and Sheryl Melton
James and Jan Menzie
Raymond and Wanda Mirtz
Donald L. and Thedis Mitchell
Lee and Jessa Lou Monigold
Leon and Carolyn Moore
Keith E. and Beverly Moore
David W. and Jaymie Morley
Louis H. and Vanita Morris
Robert E. and Carol Moses
Tom and Sue Nabors
Hiram and Juanita Neal
Coot H. and Bettie Nelson
Terry R. and Doneta Nichols
J. R. and Dorothy Nichols
Frank N. and Dorothy Nikkel
Clifford Lee and Fern Niles
Terrell T. and Mary Nowka
Harry E. and Nancy McClain Nowka
Ted and Deann Ogilvie
Glenn E. and Susie Oneth
Billie and M. Gwen Pasby
R.L. and Dr. Lucille Patton
Larry and Pauline Pennington

Gene Peterson
Don W. and Marjorie Pigg
Shirley Polk
J. Stan and Pat Powers
Lessley and Marianne Price
Don and Peggy Prock
Judith Pruzzo
Roger and Marolyn Pryor
Darin L. and Kathy Purinton
Joe and Chelly Quinn
Charles and Suann R. Raff
Michael D. and Donna Ratke
Ed M. and Paita Reed
Earl and Louise Reynolds
Roger and Kim Reynolds
Dan and Margaret Rivkin
Don M. and Ora Lee Roberts
Warren and Alice Robertson
D.L. and Sally Robertson
Michael and Vera Robertson
Ken and Susan Rose
Robert and Rita Lee Russell
Gale A. and Martha Sadler
A. Wayne and Joidy Salisbury
Jack and Twyla Sanders
Otis J. and Adelia Beth Sanders
Don and Sally Sappington
Joseph Paul and Patti Scheefers
Marvin and Loree J. Schlichting
Gerald and Margie Schmidt
Ron and Peggy Schmidt
Arthur and Bertha Schmidt
Calvin and Wanda Schneider
Lloyd and Ramona Searcey
Eddie W. and Helen Seyler
Ralph Shockley
Allen G. and Vera Siemens
Nelson M. and Jane Sims
Coy D. and Nina Smith
Kenneth H. and Ann Smith
Truman Smith
D. M. and Phyllis Sokolosky
Gilbert D. and Nancy Srygley
Dr. Roger and Brenda Stacy
Larry L. and Samye Steward
Michael and Cynthia Stowers
Don G. and Sandra Stutters
Barbara Sweet
Robert and Grace Templeton, Jr.
Jack and Helen Thomas
W.A. and Evelyn Thompson
Riley W. and Vera Tippens
Charles and Phyllis Torbeck, II
Robert and Karen Travis
Leonard E. and Katie Travis
Nathan and Freda Tubb
Charles R. and Jane Tucker
J.L. and Martha Unger
Leland J. and Ella Marie Unruh
Steven and Connie Vaughan
Lamont and Palma Veatch
Eddie and Janis Vowell
Judy and Kimberly D. Walker
John B. and Sandy Walker, II
Bob and Margret Walton
Don and Lavita Ward
Bill B. and Katie Ware
Jack and Doris Ware
Jim E. and Sue Warnke
Charles and Lisa Weaver
Charles and Mary Lee Webb
M. C. and Louise Weber
Melvin and Betty Westmoreland
Gary and Tamela Whaley
Mori K. and Teri White
Vernice D. and Mary Widney
Heith and LeaAnn Williams
William and Robin Williamson
Melvin and Amber Wilson
Larry D. and Carole Woodard
Jim and Dora Woods
John and Edna Word
Everett and Jenny Wright
Jake W. and Mary Wright
Glenn H. and Ernestine Wright
Harold and Carol Wright, Jr.
Charles H. and Hazel Wycoff
Jerry and Carrie Yowell
William and Edith Yowell
Lifetime Singles
James Charles Adcox

Candi Lynnett Aguirre
Edna V. Allen
Ben Allison
Delbert D. Amen
Ron J. Anderson, M.D.
E. Vann Greer Andrews
David K. Anpalagan
Jim Archer, Jr.
Suzanne Arnold
Arnold B. Baergen
Harold Baggett, USAF (Ret.)
Pat Kelley Baker
Sandra G. Baldwin
Ronald Barber
Connie Barnes
Imogene Base
Mary Ellen Bates
Robert P. Bates
William E. Bates, Jr.
Tom E. Baucum
Pamela Joan Beadle
Jerry L. Beech
Steve Belcher
Polly Benedict
Helen Bennett
Elloween Bennett
Zane Bergen
Myron P. Bergen
Mary Berrong
Susie Bewley
Philip K. Beyer
Kevin N. Bihrey
Isabelle Ann Billen
Grace Boal
Elaine Boatsman
Adolph C. Bolenbach
G. Louis Bollenbach
Jack Bonny
Carol J. Boren
Marjorie M. Bose
Terry Robert Boucher
Olan D. Bourland
Karla Jo Bowen
Beatrice Moseley Bowers
Todd Boyd
Faye Boyers
Donna C. Boyett
Vada Boyle
Opal Bradley
Andi Brankel
Jerry H. Brehm
Olen Bridges
Donald Clyde Briix
William Brooks
Cindy G. Brungardt
J. Gid Bryan
Carolyn Sights Buckenmaier
Earl J. Buckmaster
Pearl Burcham
Grace M. Burcham
Fred Burrow
Gary Buser
James Butts, Jr.
Jim H. Calvert
Linda Campbell
Avis Cersghino
Harlene Chastka
H. Jerrell Chesney
Cecil R. Mchesser
Ellen M. Church
Elizabeth Coleman-Hix
Paul Conner
Amy Cooper
Carl Cooper
Robert J. Corbin
Doris Corley
Jack Hanlon Cotter
Patrick Cowan
Gary Dale Cox
Glenda Creach
Martha Crook
Fannie A. Crump
Benjamin M. Cumbus
Curtis B. Cunningham, M.D.
Robin Amber Cusack
Samuel and Merrilee Cypert
Sam S. Dalton
Scott Damron
Barbara Daniel
Tom W. Davis, M.D.
Wiley Gene Davis, M.D.

Cecil Devine
George Dickey
Melodee Dietz
Lonnie A. Donaldson
Michael A. Dotson
Kelly E. Douglas
Dr. Roy Dowdell
Donald Dean Dowling
Freddie Bob Downs
Jerry Doyle
James Doyle
Lori L. Scott Dreiling
Kenneth Duerksen
Phillip Edelblute
Edith L. Eller
Charles G. Evans
Larry Evans
Ruth Evans
David D. Fain
Michael Farabee
Brenda Fast
Mabel E. Fenter
James L. Ferguson
Roberta Finch
Juanita Finlayson
Margaret M. Flaws
Dorothy Foster
Donald Forbes
Juliana D. Franz
Betty Fry
David Lee Fry
Pam Funk
Charles E. Gatlin
Rosa L. Gilliland
Dr. Larry B. Godley
James Graft
James Steven Graham
Edwin T. Green
Ted Guffy
Glenace L. Habbershaw
Norma Hamburger
Bill E. Haney
Ruth Hankla
Neva M. Hardiman
Nellie Harris
Richard Hasley
Kenneth R. Hastings
Mary A. Hatter
Darci Shawn Hatter
James K. Hawkins
Howard Hayes
Dr. John M. Hays
Jack W. Head
Jeannette Heiberger
Jewel J. Heilbron
Ruth Ann Heitzelman
Lee Bain Helms
Larry Henderson
Faye Henderson
Terri Herrod
Dr. Joe Anna Hibler
H.P. Hickerson
Andy Hicks
Benny J. Hill
Chuck Hill
Jerry H. Hodge
Tresa Hohmann
Shella Hoke
Raymond Fellow Hoke
Joe Richard Homsey, Jr.
Lawrence D. Hoover, Jr.
Kari Lynette Hopkins
Elsie Howe
Lorene Hull
Shirley Huser
Harold Dean Ingram
W. E. Jackson
Jane Lee Jacobs
W. Rudie Janzen
Robert G. Jeffery, Sr.
Ruby Fern Johnson
Roy A. Johnson
Kaye Johnson
Dwayne Johnson
Charlene M. Johnson
David Johnson
Roger L. Johnston
Karla A. Johnston
Roger Dwayne Johnston
Janet K. Kamphaus
Bobby Chris Karlin

Gary Kaak
Ronnie L. Keith
Bernard G. Keller, Jr.
Ralph W. Kelting
Walter C. Kerr
Eulond King
Howard King
Neil King
Jerry Kinzer
Larry Knisley
Edward E. Krewall
Betty Jo Labahn
Emma Allison Lamar
Elsie Hughes Lang
John D. Lassiter
Ray Dennis Lau
Alicia D. Leslie
Daniel J. Lewis
Grady Lewis
Todd D. Liley
Rick Lindley
Kelli Litsch
Robert Little
Allan William Long
Mary Long
George Lowry
Walter Luchau
Maryetta G. Maassen
Ron Maassen
Kathe S. Madole
Bruce Magill
Yvonne Marshall
Lynda Ann Martin
Jimmy D. Martin
Flavil V. Martin
Don G. Matheson
Lois Mathis
Foster L. Mayer, Jr.
Kellie Jean McCann
Martha Ann McCaslin
Lyan McClung
Cordelia McCullough
Goldie McKelvy
David T. McKenzie
Clifford T. Meece, Jr.
Stirling Meier
Iris Metcalf
Blanche Metcalf
Keren Miller
La Rita Miller
David Misak
Eli Mize
Cindy Kaiser Moore
Melda Moore
J. Loretta Moran
Ruth Ann Morgan
William R. Morris
Thurman K. Morris
Jan Morton
Kerry W. Moser
Mark D. Mouse
Sheila Mouse
Mary Lu Mulbery
Lin Murdock
Dawson Nail
Edwin P. Nall
Linda D. Nance
Robert A. Nickey, II
Kathlene Niebruegge
Ed C. Nikkel
Rodney L. Ninnman
Ralph Nitlolo
Ethel M. Nunn
Lowell W. Oden
Richard O'Hara
Benjamin O'Maiye
Cherokee Orndorff
Patrick Cowan
Anita Pauwels
Denice Payne
Mary Perkins
Julie Ann Phillips
Joe N. Pierce
Bill Potcut
Bryan H. Potter
Rick Powell
Mary L. Prather
Leone Pressley
Doris Price
Shirley Lee Pugh
Ruth M. Purdy
Continued on next page

Alumni list continued from previous page

Gary D. Rader
 Jenifer Ann Randle
 Beuty Jo Redd
 J.L. Regan
 Elaine R. Regier
 Rollin D. Reimer
 Dr. Danny C. Reinke
 Larry David Reitnauer
 Fran Reuber
 Dr. Mark A. Reynolds
 Joe Reynolds
 Maxine Rhodes
 Marana Rice
 Cherie Gay Richardson
 Harvey Miller Richert, II
 Larry Paul Robertson
 Ruby Robertson
 Sharon Ann Roessler
 Virgil R. Rogers
 William Edward Rolison
 Frankye Romig
 William Robert Romig
 Johna Roof
 Gienna R. Rose
 Claude Howard Rose, Jr.
 Charles Joe Ross

Douglas A. Rowley
 Melinda S. Rushing
 O. Dale Rusk
 Homer L. Ryan
 Dr. William Sartor
 Fusao Sato
 Geraldine Sauer
 Stephen John Sauer
 Charles Edward Schilz
 Darrell Lee Schultz
 Elizabeth Schumacher
 Vivian Schutz
 Joe Schwemin
 Jana Lou Scott
 Ronald D. Scott
 Darlyne Seal
 Dr. David Seigler
 Mike Sewell
 Russell Sharp
 Thel Ann Shelby
 Ann Shinault
 Nandana Silva
 George C. Simmons, Jr.
 Robert O. Smith
 Sidonna R. Smith
 Rose Johnson Smith
 Patricia Smith
 Craig A. Smith
 Loren Snodgrass

Kendall Wayne Southern
 Jerry Speed
 David A. Spivey
 Jim Spoon
 Duane Stevens
 Ricky Lynn Stevens
 Phillys Stevenson
 Steve Stroud
 Terri Nora Taflinger
 David L. Tautfest
 A. Clyde Taylor
 Ron Teasley
 Johnnie Faye Thomas
 Garline Thomas
 David M. Thompson
 Sam Thornbrough
 Dr. Robert B. Todd, Jr.
 Moushegh K. Tourian
 Gregory L. Towe
 Michael J. Travis
 Randal Treiber
 Charles Trentham
 Wayne Tripp
 J. Brant Turner
 Arnold W. Umbach
 Stella Umbach
 Margaret E. Van De Water
 Michael L. Vermillion
 R. Scott Vincent

Chris Vines
 Hal Vorse
 Virginia D. Waddle
 Scott Alan Wales
 William R. Walker
 Ronnie Derral Walker
 James M. Walker
 Jeff L. Walker, Jr.
 Judy Kay Wall
 Beulah W. Wall
 John Edward Wall
 Thelma Walsh
 W. W. Ward
 Michael Royce Warkentin
 James Karl Warkentin
 Randolph Hugh Warren
 Basil Weatherly
 Donald L. Weeks
 Patricia K. Welch
 Linda Lee Whaley
 Grover Cleveland Wheeler, IV
 Sandra R. White
 Billy Williams
 William W. Wilmeth
 Kurt Winden
 Luther R. Winkler
 Freda Winsett
 D. J. Witherspoon
 Losey A. Witherspoon

Roy J. "Deck" Woldt
 Norris Wood
 Bruce Woods
 Janet K. Word
 Tommy Lee Worth
 Sandra Wright
 Bob Wyett
Yearly
 Minnie Anderson
 W. Sue Ball
 Doyle Bergman
 Brian Box
 Barry Brian
 Dr. Bob Brown
 Robert Chatigny
 Deborah Dehn
 Michael Dollar
 Carl L. Dunn
 Tracy Dean Edwards
 Don Elliott
 Robetha Farris
 Rusty Fleming
 Raymond Garrison
 Darrell Havens
 Claude Irby
 Kay Kalsu
 Jerry M. Kaufman
 Yvonne Kauger
 Edwin Krause

Ronald J. Krittenbrink
 Scott Michael Lampe
 Vesta Leis
 Elbert L. Little, Jr.
 Cheryl Lockstone
 Caren Mahan
 Lorena G. Males
 Reba Massey
 Jim McGoffin
 Robert O. Morris
 Jace Mouse
 Mary M. Nepariko
 Gerald Nipp
 Marge Porteus
 Margaret Price
 Gene Ross
 Nancy Savage
 Leonard Schiff
 Debbie Shepherd
 Jack Snavely
 Alan Spies
 Julie (Bergman) Terrell
 Kay West
 Genie Whitfield
 Dean Wild
 Lawrence Williams
 Donald Ray Wilson
 Thera Yoes
 Senea Young



SWOSU Alumni directory becomes available in 1998

In search of...Southwestern Oklahoma State University Alumni

Have you ever tried to get in touch with an old classmate, only to find that the last address you have in your telephone directory is 8 years old? Well, your troubles are over. Soon an impressive directory of our alumni will be available to help you locate all your old friends.

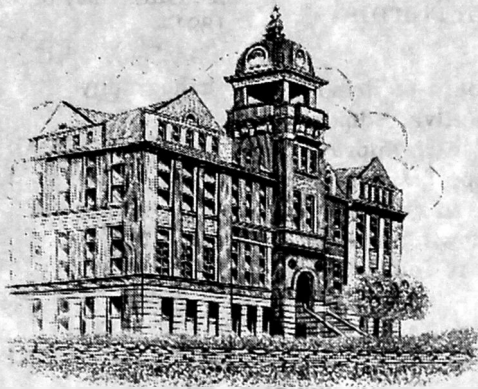
The new Southwestern Oklahoma State University Alumni Association Alumni Directory, scheduled for release in June/July 1998, will be the most up-to-date and complete reference of over 20,458 Southwestern Oklahoma State University Alumni Association alumni ever compiled! This comprehensive volume will include current name, address and phone number, academic data, plus business information (if applicable), bound into a classic, library-quality edition.

The Alumni Association has contracted the prestigious Bernard C. Harris Publishing Company, Inc. to produce our directory. Harris will soon begin researching and compiling the information to be printed in the directory by mailing a questionnaire to each alumna/us. If you prefer **not to be listed in the directory**, please contact the alumni office in writing as soon as possible.

The new directory will soon make finding a former student as easy as opening a book. Look for more details on the project in future issues of *Echoes from the Hill*.

in Memoriam

Name	City	Grad. Year	Name	City	Grad. Year
Ruby Barten	Elk City	1923	Florence Ruth Lee	Oklahoma City	
George Beckloff	Marietta GA	1955	Asa Marshall	Cordell	1938
William Donald Bennett	Eakly	1961	Nell Miller	Canton	1947
Donald Keith Davis	Prescott AZ	1963	Fannie Mae Payne	Milton FL	Attended
Walter Dickison	Weatherford	Faculty	Iris Pennington	Reydon	1944
Margaret Friedrich	Clinton	1968	Gary A. Rempfer	Clinton	Attended
Beverly Hays	Oklahoma City	1976	Leroy "Rusty" Rust	Lookeba	1982
Ava M. Herbert	Hinton		Edith Sears	Cordell	1930
Edna Mae Zorger Hulse	Lawton	1950	Ester Sullivan	Clinton	1929
Bob Ingraham	Mooreland	1958	Mickey Webber	Hollywood CA	Attended
Theodore "Ted" Johnson	Colony	1950	Lloyd A. Whitfield	Wichita Falls TX	1941
Mary Sue Langford	Norman	1962	Glenn Wright	Weatherford	1949



The Normal

Southwestern Oklahoma Territorial
Normal School
(1903-1907)

Weatherford, O.T.

Vol 1 No 1

Fall 1997



J.R. Campbell Named
First President of
Southwestern Normal

James Robert Campbell, born August 17, 1848, was a native of Cambridge, Ohio where he graduated from high school. He attended nearby colleges at New Concord (Muskingdom College) and Antrim (Antrim College). He also attended the Cambridge Normal Institute for his teacher certification. He received the A.B. degree from Antrim in 1879. (1,2)

He spent most of his early professional career in Kansas where he served as Superintendent of Schools at Garnett,

Hutchinson, and Newton. He was also admitted to the Kansas Bar and practiced law for five years. He served as Probate Court Judge at Newton, 1886-87. (3) He left Kansas for two years to assemble research materials in the western states for Hubert H. Bancroft's *History of the Pacific States*. His assignments included the Colorado Sand Creek massacre of 1864. (4) When this project was completed, he returned to Kansas to accept the position of Fredonia Superintendent of Schools. (5)

Campbell came to Oklahoma Territory in July, 1898, when he was appointed School Superintendent for the capital city, Guthrie. (6)

He was appointed the first President of the Southwestern Normal in 1903. (7) During his tenure (1903-1907), he assembled an outstanding faculty whose teaching one student later described as "... a series of exciting adventures among masterpieces." (8) Louis Alvin Turley, a recent graduate of Harvard College, was recommended by Professor of Philosophy, William James. Turley was appointed Chair, Department

(continued on page 4)

Normal to Open Sept 15

The birth of the Southwestern Normal School was not easily accomplished. (1) Following the passage of legislation which established the school March 8, 1901, two site selection committees appointed by two territorial governors recommended two different townships to the Territorial Board of Education. (2,3) The politics and legal maneuverings played out by competing interests delayed opening of the school by at least a year. (4) The contest was thought to be settled in favor of the town of Weatherford over Granite with the decision of the Territorial Supreme Court, June Term, 1902. (5) When the Legislature convened the following January, an effort was made by Granite supporters to repeal the act which established the school. This action was defeated by a one vote margin in the Territorial Council in early February 1903. (6,7)

With this result, the Territorial Normal School Board of Regents could accept bids for construction of the school in Weatherford, Custer County. (8) The contract for a building and heating plant was awarded to H.J. Vandenburg,

(continued on page 3)

The Normal

J. A. Hibler, Publisher

M. A. Kerley, Editor

Telephone 28

The Normal is offered each semester to promote an interest in the historical development of Southwestern with special emphasis on the early years when the institution functioned as a normal school. *The Normal* was printed by the University Press and was issued by Southwestern Oklahoma State University as authorized by Dr. Joe Anna Hibler, President of the University.

Supported by a SWOSU Office of Sponsored Programs Grant.

Copyright 1997, Michael A. Kerley

Town Items

"A number of our business houses have agreed to close at 7:00 PM except on Saturdays to give the clerks a few hours much deserved rest."

Custer Co. Republican
June 11, 1903

"North Custer Street is going to have some cement walks and North Broadway vitrified brick walks."

Custer Co. Republican
April 2, 1903

"A natatorium will be built west of the ice plant with hot water furnished by the same. The pool will be 20' x 60' and from 3 to 8 feet in depth. A gymnasium will also be built adjacent to the pool."

Custer Co. Republican
April 16, 1903

First Faculty Selected Southwestern Normal

The Territorial Board of Regents for the Normals at Alva, Edmond, and Weatherford has approved faculty and staff appointments for 1903-04 for the Southwestern Normal. The following appointments (monthly pay indicated is for 10 months) were recommended by President J. R. Campbell:

Belle F. Barker (\$75.00)
Northwestern University
(Chicago)
Chair, Dept. of Vocal Music

Guy W. Bohannon (\$110.00)
B.S. Western Illinois State
Normal (Bushnell), 1899
Chair, Dept. of Science

Daisy D. Ferguson (\$75.00)
L.C. Kansas State Normal
(Emporia), 1889
Director, Dept. of Teacher
Training

John A. Ferrell (\$120.00)
B.S.C.E. Northern Indiana
Normal and Business Institute
(Valparaiso), 1897
Chair, Dept. of Mathematics

LeRoy B. Greenfield (\$100.00)
A.B. University of Oklahoma,
1903
Chair, Dept. of English

Thomas B. Kendrick (\$110.00)
No information
Chair, Dept. of Languages

Elizabeth King (\$40.00)
L.C. Central Oklahoma
Territorial Normal (Edmond),
1902
Secretary and Librarian

Robert N. Linville (\$100.00)
B.S.D. Northeast Missouri
State Normal, 1898
B.A. Drake University, 1902
Chair, Dept. of History and
Civics

Sarah A. Paine (\$72.00)
A.B. University of Michigan,
1891
Chair, Dept. of Geography and
Orthography

Mary P. Rice (\$65.00)
B.A. Kingfisher (Oklahoma
Territory) College, 1903
Assistant, Dept. of English

Alvin W. Roper (\$60.00)
No information
Chair, Dept. of Instrumental
Music

Roxie E. Seevers (\$72.00)
B.L. Southwest Baptist College
(Bolivar, Missouri), 1902
Chair, Dept. of Expression and
Physical Culture

Austin E. Wilber (\$110.00)
L.C. Michigan State Normal
(Ypsilanti), 1898
A.B. University of Michigan,
1903
Chair, Dept. of Education and
Drawing

John W. Beck (\$40.00)
Superintendent, Building and
Grounds

President Campbell's salary for
12 months will be \$2,200.00

References (please see page 6)

Normal Envelopes

"Don't use anything but envelopes with the Southwestern Normal School picture and a return card printed on them. Only 10 cents a package at this office."

Custer Co. Republican
August 6, 1903

Houses

"A good four room cottage near school, nice lawn, city water, fruit and shade trees, price \$750."

Custer Co. Republican
August 6, 1903

Normal Notes

"Professor J.R. Campbell has written us that he expects to be here about the middle of June to find a place to live. He will attend teachers' institutes and meetings this summer in order to advertise the Normal."

Custer Co. Republican
May 21, 1903

"Elizabeth King, Normal Secretary and Librarian, has arrived in Weatherford to handle the correspondence regarding the opening of the Normal."

Custer Co. Republican
August 6, 1903

"Anyone who can use student labor for board or room should inform Professor Linville as he has inquiries from students who will come if they can work."

Custer Co. Republican
August 6, 1903

"John Beck, Normal Building Superintendent, proved up his claim before the probate judge at Cordell Tuesday of this week."

Custer Co. Republican
June 18, 1903

"Professors Campbell and Linville are attending teachers' institutes at Taloga, Grant, and Cheyenne this week."

Custer Co. Republican
August 13, 1903

Promote the Normal

"...there is nothing better for a young man or woman than a good education and it is only to be regretted that so many do not avail themselves of the opportunities offered. Tuition in this school will be absolutely free..."

Custer Co. Republican
June 25, 1903



Architect's Drawing of Proposed
Southwestern Normal Building

Normal to Open

(continued from page 1)

Guthrie contractor, for \$34,873. (9,10) The bid was based upon Guthrie architect J.H. Bennett's specifications. (11,12) Concurrent with these proceedings, an appropriation of \$25,000 for operating expenses had been passed by the Legislature. (13) Forty acres, supplied by city water, and \$5,000 for landscaping had previously been provided by Weatherford as part of the application to the Site Selection Committee. (14,15) The property deed showed the title transfer from Mr. and Mrs. Beeks Erick to the Territorial Board of Education involved the sum of ten dollars. (16)

Work began with the arrival in Weatherford of a landscape gardener from the Stillwater Agricultural Experiment Station and a surveyor. (17,18) Excavation, which began in late March, was delayed when the water mains had to be relocated west of the building site. (19,20) Campus beautification began with a contract awarded to John Beck for planting 3,000 trees north of the building site. (21,22)

James R. Campbell, Guthrie School Superintendent, was appointed President of the school. (23) Interviews began for faculty and staff appointments in Guthrie. (24,25)

Considering the late start in construction and delays in obtaining materials, the Board of Regents realized that the building would not be anywhere near completion by the start of school in September. President Campbell was then directed to seek classroom accommodations in the City of Weatherford. (26,27)

Four vacant single room businesses, located on the north side of Main Street between 7th and Broadway Streets, were available. (28,29) Three of the buildings were donated for school use rent free. (30) These structures were approximately 24x40 feet with windows in the front and rear. (31) The buildings, with saloon signs and fixtures in place, were owned by the Anheuser-Busch Brewing Company of St. Louis and had been vacant for several years since the Choctaw, Oklahoma, and Gulf Railroad had extended its tracks west to Amarillo, Texas. (32,33)

The fourth building was rented locally for \$20.00/month. This building would house the President's Office in the rear with the front area reserved for classroom use. Of the other three buildings, two were used for classrooms and one was designated for instrumental music. All four buildings required repairs and the purchase or lease of heating stoves, chairs, blackboards, etc. (34) The buildings were located adjacent to saloons which were open for business. (35)

In addition, the local Opera House, located at the northwest corner of 7th and Main Streets, and the Congregational Church on Custer Street were made available. (36,37,38) The church served classes in physical training and vocal music. (39)

(continued on page 4)

Normal to Open (continued from page 3)

While the renovation of these temporary quarters was being completed, the business of the school was carried out in Guthrie. Miss King, the Normal Secretary, began work June 1. (40) Professor Wilber reported July 1 and began work on course descriptions and the ordering of supplies. (41) Professor Linville, who had resigned his position as Minister of the Weatherford Christian Church, began work June 1 recruiting students by horse and buggy. He visited farms in Custer as well as all of the contiguous counties. (42,43, 44,45)

Work on the Normal building had progressed to the point that the cornerstone could be dedicated July 4. The ceremonies were conducted by the Weatherford Masons and Odd Fellows with the Welcoming Address offered by Professor Linville. Items placed behind the stone included a history of the Southwestern Normal. The granite slab, obtained from quarries at Granite, was placed in the middle of the building in the second story. (46,47)

In early August, a temporary office for President Campbell had been provided in the Weatherford Exchange Bank building in time for early enrollment which began August 10, 1903. (48,49) By the first week in September, interior work on the Normal building was well underway with window installation and wall plastering. (50)

" . . . the new institution had finally reached fruition . . . "

References (please see page 6)

Campbell

(continued from page 1)

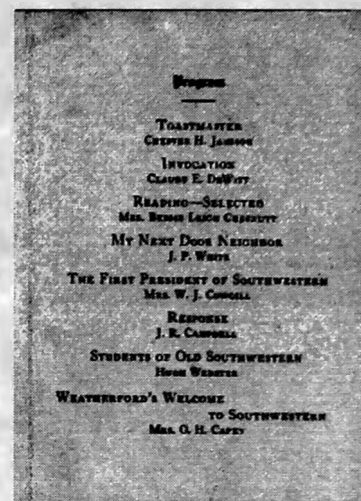
of Biology, Physiology, and Natural Science in 1907. (9) He left this position after only one year to establish the Department of Pathology and Bacteriology at the University of Oklahoma School of Medicine. (10) Over the next 16 years, Turley established four additional basic science departments in the medical school. (11) He was inducted into the Oklahoma Hall of Fame in 1950 in recognition of his role in shaping the early growth and development of the medical school. (12)

Roy Temple House, also a later Oklahoma Hall of Fame inductee, was Chair of the Southwestern Modern Languages Department, 1905-10. In 1927, while at the University of Oklahoma, he founded *Books Abroad*, a journal devoted to international literary comments. He was a candidate for the 1948 Nobel Peace Prize. (13)

Campbell set an example for scholarship during the first year as evidenced by his enrollment in a six-weeks summer course at the University of Chicago in 1904. (14)

Campbell's leadership was brought to a close with statehood. Both he and the president of the Normal School at Alva were dismissed in December, 1907, because of their Republican Party affiliation. (15,16) One local newspaper editor remarked, "where will things end if every time a new governor takes his seat the heads of educators, not in accord with the political machine, must fall." (17)

Campbell was determined to remain in Oklahoma rather than



Program of Last Banquet
Honoring James Robert Campbell

seek certain employment out of state. (18) It was reported that he was seeking the appointment of Weatherford Postmaster. (19) When the Arapaho (Custer County Seat) School Superintendent resigned to accept a position at the Southwestern Normal, Campbell was appointed to fill the vacancy. (20) Campbell remained at Arapaho until 1915 when he was appointed School Superintendent at nearby Thomas. (21) While at Thomas, he completed the requirements for the MA degree at the University of Oklahoma at the age of 68. (22)

During the summer of 1917, a temporary vacancy occurred at the Southwestern Normal. President James B. Eskridge named Campbell the Acting Director of the Training School for the Summer Term. (23) A few months later, he was offered a permanent position as Professor of Education. (24,25,26)

From 1917-21, Campbell taught courses in History of Education, Philosophy of Education, Psychology, and Pedagogy. (27)

(continued on page 5)

Territorial Items

Special to the Kingfisher Times
June 4, 1903

Enid, O.T., June 3 - Further evidence is at hand that the man who died here last January and who was supposed by some to be John Wilkes Booth, the assassin of President Lincoln, was really that man. He has been identified by Junius B. Booth, his nephew, and others who knew John Wilkes during the war.

After the death of the man here certain papers found upon his person led to the opinion that he was the fugitive assassin supposed to have been killed thirty-three (sic) years ago and the body was embalmed to await a thorough investigation. It has been in an undertaking house ever since, and all possible efforts have been made to verify the remarkable claim made by the dead man's lawyer who came from Memphis and asserted that his client was none other than the slayer of President Lincoln.

St. Louis, Mo., June 3 - A special (report) from Enid, Oklahoma, says Junius Brutus Booth, the actor and nephew of John Wilkes Booth, (and) the assassin of President Lincoln, has fully identified the remains of the man known as David E. George as his uncle.

George or Booth committed suicide here January 4 last and in his effects was found a letter directed to R.L. Bates of Memphis, Tenn. Mr. Bates came here at once and fully identified the body as John Wilkes Booth. He then went east and had obtained positive identification of the remains from the dead man's nephew and from J. Jefferson, Miss Clara Morris, and a score of others known by him in his early days. According to his (Mr. Bates) story, he had acted as Mr.

Booth's confidential agent and attorney for nearly 40 years. After Lincoln was shot, the assassin escaped to Garrett Plantation in Virginia. According to Mr. Bates, the man who was killed was named Ruddy. Being warned, Booth left Garrett's and was taken care of by friends in southern Kentucky. He later settled at Glenrose, Texas, where he conducted a store for several years as John St. Helen.

Booth at El Reno

Prior to his arrival in Enid Booth or George worked as a house painter in El Reno. His landlady related how Booth told her of his escape and how friends had rowed him down the Potomac River to a ship departing for Europe.

He also resided at the El Reno Anstine Hotel where he was remembered for his theatrical manners and interest in theater publications. Following these revelations, federal representatives removed the Anstine Hotel registry page containing George's signature.

("A History of El Reno," Edna May Arnold Archives, Public Library, El Reno, Oklahoma)

Campbell

(continued from page 4)

When President Eskridge was appointed President of the Oklahoma A&M College at Stillwater in 1921, one of his first recommendations was that a Correspondence School be established. (28,29) Following regents approval, Campbell was recommended for Director of Correspondence and Associate Professor of Education. (30) Campbell accepted this appointment and served as Director until 1923 when he assumed full-time teaching duties. (31,32) It was noted that "the stature of Professor Campbell

gave credence to the newly formed correspondence school and facilitated preparation of courses to be offered by mail." (33)

Campbell returned to Southwestern for the last time in May 1929 when he gave an address as a special guest at the dedication of the new Library Building. (34) The following fall, he appeared tired at the annual banquet which had been held in his honor by his colleagues and students of the Territorial Normal. (35,36) He continued teaching until a few days before his death in Stillwater, November 30, 1929, at the age of 81. (37,38)

A special memorial service was arranged at Southwestern for the morning of December 4. Robert N. Linville, the principle speaker, remarked that Campbell "... had that unnameable quality which won his students to him, gained their confidence, and inspired them with a desire to be and to do ..." (39) "The great work for which J.R. Campbell will be known and remembered throughout the ages yet to come is the organization and building of this institution ." (40)

References

1. The Southwestern (school newspaper), June-July, 1917, pg 147-148
2. L.B. Hill, *A History of the State of Oklahoma*, Vol II, Lewis Publishing Company, Chicago, 1908, pg 43
3. Ibid
4. R. Tassin, *Stanley Vestal Champion of the Old West*, Arthur H. Clark Company, Glendale, California, 1972, pg 24
5. L.B. Hill, *A History of the State of Oklahoma*
6. R. Tassin, *Stanley Vestal Champion of the Old West*
7. Custer County Republican (newspaper, Weatherford, Oklahoma), March 19, 1903
8. S. Vestal, *Short Grass Country*, Duell, Sloan, and Pearce, Inc., New York, 1942, pg 294
9. Southwestern State Normal Yearbook, 1907-08, pg 10
10. M.R. Everett, *Medical Education in Oklahoma, The University of Oklahoma School of Medicine and Medical Center 1900-1931*, University of Oklahoma Press, 1972, pg 30

11. B.A. Hayes, *Leroy Long - Teacher of Medicine*, Chronicles of Oklahoma 21:102, 1943
12. The Daily Oklahoman (newspaper, Oklahoma City, Oklahoma), July 28, 1953
13. Norman Transcript (newspaper, Norman, Oklahoma), December 5, 1963, pg 5
14. Custer County Republican, July 21, 1904.
15. Arapaho Bee (newspaper, Arapaho, Oklahoma, December 13, 1907
16. Custer County Republican, December 12, 1907
17. Custer County Republican, December 19, 1907
18. The Daily Oklahoman, April 25, 1948, pg 60
19. Arapaho Bee, January 10, 1908
20. Custer County Republican, June 4, 1908
21. Thomas Tribune (newspaper, Thomas, Oklahoma) May 27, 1915
22. J.R. Campbell, "Educational Survey Custer County Oklahoma," Master of Arts Thesis, University of Oklahoma Library, Norman, 1916
23. Weatherford Booster (newspaper, Weatherford, Oklahoma) May 31, 1917
24. Thomas Tribune, July 12, 1917
25. Weatherford Booster, July 12, 1917
26. Weatherford Booster, September 13, 1917
27. Faculty Grade Reports 1917-1921, Term Book Vol 2-5, office of the Registrar, Southwestern Oklahoma State University
28. Weatherford Booster, April 21, 1921
29. R.C. Fite, *A History of Oklahoma State University Extension and Outreach*, Oklahoma State University Centennial Histories Series, 1988., pg 17-18
30. Ibid
31. Ibid
32. Weatherford Booster, August 4, 1921
33. R.C. Fite, *A History of Oklahoma State University Extension and Outreach*
34. The Southwestern, May 22, 1929
35. R.T. House, "J.R. Campbell as I Knew Him," The Sooner Magazine, January 30, 1930, pg 123-124
37. Ibid
38. Stillwater Gazette (newspaper, Stillwater, Oklahoma), December 6, 1929
39. Copy of Memorial Address in honor of James R. Campbell delivered by R.N. Linville on the campus of Southwestern Oklahoma State Teachers College, December 4, 1929, Library, Southwestern Oklahoma State University, Weatherford
40. Ibid

Supported by a Special Organized Research Award to M. A. Kerley by the SWOSU Office of Sponsored Programs

References - First Faculty

1. Life Certificate abbreviated as L.C.
2. Board of Education Papers for Southwestern Normal School, A68 Folder

- Series 20 - Quarterly Reports and Folder
- Series 21 - Miscellaneous Reports, The Oklahoma Collection, Library, University of Central Oklahoma, Edmond
3. Minutes, Oklahoma Territorial Normal Schools Board of Regents, Journals 14-15, Record Group 18, Series 43, Archives and Records Department, Oklahoma State Department of Libraries, Oklahoma City
4. 1903-04 First Annual Yearbook, Southwestern Normal School, Library, Southwestern Oklahoma State University, Weatherford
5. Custer County Republican, May 28 and August 27, 1903 (newspaper, Weatherford, Oklahoma)

Supported by a Special Organized Research Award to M. A. Kerley by the SWOSU Office of Sponsored Programs

References - Normal to Open

1. J.H. Thomas and J.A. Hurt, "Southwestern Normal School: The Founding of an Institution", The Chronicles of Oklahoma, Vol 54(4): 461-467, 1976
2. Territory of Oklahoma, Session Laws of 1901, Article 10 Southwestern Normal, pg 210-214
3. M.F. Fiegel, *A History of Southwestern State College, 1903-1953*, Doctor of Education Dissertation, Oklahoma State University, Stillwater, 1968, pg 2-13
4. Ibid.
5. Oklahoma Reports Vol 12, pg 286-302, 1902
6. Fiegel, "A History of Southwestern State College, 1903-1953"
7. Custer County Republican, February 12, 1903 (newspaper, Weatherford, Oklahoma)
8. Custer County Republican, February 19, 1903
9. Custer County Republican, March 5, 1903
10. Board of Education Papers for Southwestern Normal School A68 Folder Series 19 - Contracts and Bids, The Oklahoma Collection, Library, University of Central Oklahoma, Edmond
11. Ibid.
12. Custer County Republican, March 5, 1903
13. Custer County Republican, March 19, 1903
14. Custer County Republican, January 8, 1903
15. Board of Education Papers for Southwestern Normal School, A68 Folder Series 17 - Location Selection for Southwestern Normal School
16. Ibid.
17. Custer County Republican, March 12, 1903
18. Custer County Republican, March 19, 1903
19. Ibid
20. Custer County Republican, April 2, 1903
21. Ibid.
22. Custer County Republican, March 12, 1903

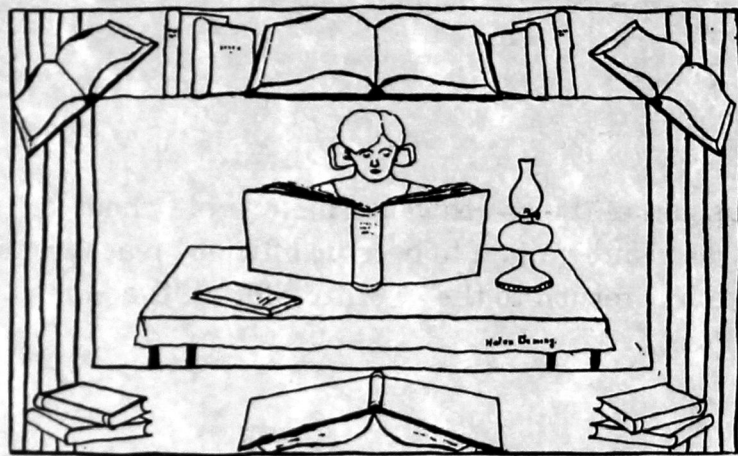
23. Board of Education Papers for Southwestern Normal School, A68 Folder Series 19 - Contracts and Bids
24. Custer County Republican, March 19, 1903
25. Custer County Republican, March 26, 1903
26. A.E. Wilber, "Reminiscences of Southwestern Normal School, 1903-1908", Library, Southwestern Oklahoma State University, Weatherford
27. Custer County Republican, May 28, 1903
28. The Southwestern, May 17, 1944 (school newspaper)
29. Board of Education Papers for Southwestern Normal School, A68 Folder Series 20 - Quarterly Reports
30. Ibid.
31. A.E. Wilber, "Reminiscences of the Southwestern Normal School, 1903-1908"
32. The Southwestern, September 8, 1953
33. R. Tassin, *Stanley Vestal Champion of the Old West*, Arthur H. Clark Company, Glendale, California, p 1972, pg 40
34. Board of Education Papers for Southwestern Normal School, A68 Folder Series 20 - Quarterly Reports
35. R. Tassin, *Stanley Vestal Champion of the Old West*, pg 40
36. Ibid.
37. The Weatherford News, September 21, 1967
38. Board of Education Papers for Southwestern Normal School, A68 Folder Series 20 - Quarterly Reports
39. Ibid.
40. Copy of Memorial Address in honor of James R. Campbell delivered by R.N. Linville on the campus of Southwestern State Teachers College, December 4, 1929, Library, Southwestern Oklahoma State University, Weatherford
41. A.E. Wilber, "Reminiscences of the Southwestern Normal School, 1903-1908"
42. Copy of Memorial Address in honor of James R. Campbell
43. Custer County Republican, July 30, 1903
44. The Weatherford News, November 30, 1967
45. Board of Education Papers for Southwestern Normal School, A68 Folder Series 20 - Quarterly Reports
46. Custer County Republican, July 9, 1903
47. The cornerstone, recovered from the ruins of the Normal Building destroyed by fire July 27, 1939, was refurbished and rededicated as the cornerstone of the campus Y-Chapel, The Southwestern, April 23, 1941
48. A.E. Wilber, "Reminiscences of the Southwestern Normal School, 1903-1908"
49. Board of Education Papers for Southwestern Normal School, A68 Folder Series 20 - Quarterly Reports
50. Ibid.
51. Ibid.

Supported by a Special Organized Research Award to M. A. Kerley by the SWOSU Office of Sponsored Programs

Southwestern Normal School

The mission of the Southwestern Normal School is ". . . to prepare young men and women to become efficient teachers and thereby to make full return to the Territory for all the money expended in its support."

- First Annual Yearbook, Southwestern Oklahoma
Territorial Normal School



Sketch by Mary Helen Deming
Southwestern Normal *Oracle*, 1907



Southwestern Oklahoma State University Foundation, Inc.

100 Campus Drive

Weatherford, Oklahoma 73096

405-774-3267

Former teacher establishes endowment

Hazel Exline only enrolled in one seminar, but thought highly of SWOSU

She only took a two-hour seminar, but the late Hazel Edythe Symes Exline thought enough of Southwestern Oklahoma State University to bequeath \$162,000 to the university.

Glennys Shillings, niece of the deceased and executor of Exline's estate, and her husband, Jesse, made the check presentation to the SWOSU Foundation. The Merle K. and Hazel E. Exline Scholarship Endowment will benefit high school graduates from the public schools of Seiling, Laverne, Sharon-Mutual, Beaver and Woodward.

Exline also set up similar endowments with Northwestern Oklahoma State University in Alva and Panhandle State University in Goodwell.

Southwestern is most grateful for this gift which will allow us to recognize students from the five public schools," said Dr. Joe Anna Hibler, president of SWOSU. "Mrs. Exline has made certain that several young people in western Oklahoma will have the opportunity to pursue higher education."

Exline passed away April 1, 1995, in Woodward at the age of 84. She was a long-time teacher who taught 44 years at various schools in Oklahoma. She obtained her

life teaching certificate from Northwestern in 1929. She married Merle K. Exline in 1930 and they lived near Seiling where she taught in Woodward County at Oakview and Elm Grove schools while Merle maintained his farming opera-

tion. In 1935, the Exlines heard there was land to rent in Beaver County and moved to the Panhandle. During the 1935-36 year, Mrs. Exline began a 39-year

teaching career in Beaver County. She taught at Rock, Blue Ribbon, District #27, Sand Creek, Sunset, Calleyville and Victory before moving to the Beaver City Schools where she taught from 1958 until 1975. She was named Teacher

of the Year for Beaver County in 1958. Mrs. Exline obtained her degree in 1953 from Northwestern. Night classes, extension work from the University of Oklahoma and Panhandle State University as well as summer sessions helped her obtain the degree.

Mr. Exline passed away in 1972 and she continued teaching for two more years. She then moved to Woodward where she lived until passing away in 1995. Woodward County was also her birthplace, and she grew up attending Lone Star School in Woodward County, but she graduated from Mutual High School in 1928. Exline was a member of the First United Methodist Church and was active in Delta Kappa Gamma, Beta Sorosis and the Woodward County Retired Teachers Association.

The scholarship endowment at Southwestern will give first preference to students majoring in the fields of English, speech, library science, reading or a related field at either the elementary or secondary education levels.



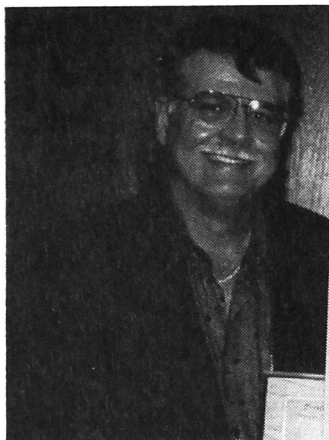
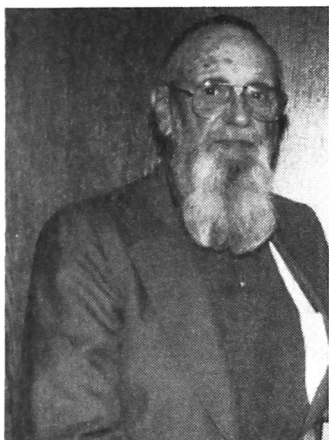
Glennys and Jesse Shillings (right) of Woodward recently presented Southwestern Oklahoma State University with a check for \$162,000 from the estate of Hazel Edythe Symes Exline who passed away in 1995. Mrs. Exline of Woodward bequeathed \$162,000 to SWOSU to benefit high school graduates from Seiling, Laverne, Sharon-Mutual, Beaver and Woodward public schools. Accepting for the SWOSU Foundation were (left) director Jim Waites and SWOSU President Dr. Joe Anna Hibler. Glennys is a niece of Exline and executor of the estate.

life teaching certificate from Northwestern in 1929.

She married Merle K. Exline in 1930 and they lived near Seiling where she taught in Woodward County at Oakview and Elm Grove schools while Merle maintained his farming opera-

tion. In 1935, the Exlines heard there was land to rent in Beaver County and moved to the Panhandle. During the 1935-36 year, Mrs. Exline began a 39-year

Foundation growing, results of donor support



President's Club Members

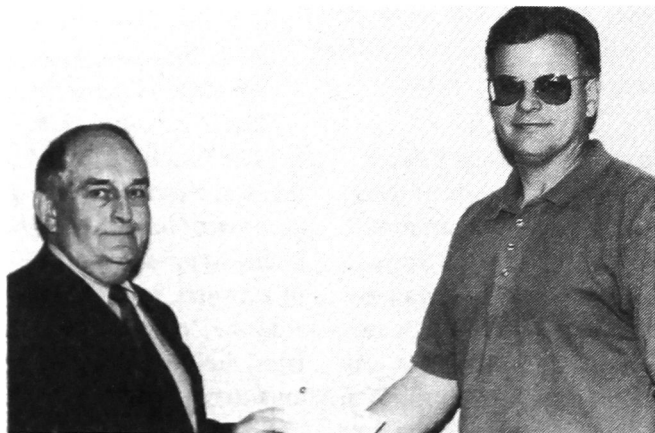
Richard Donnelly of Elk City, Chris Pollman, owner of Chris Pollman Karate Academy, and Johnnie Faye Thomas, former School of Pharmacy employee, were all recently honored for their President's Club donations. Club members donate at least \$1,000 annually to the SWOSU Foundation. All were honored at a luncheon on the Weatherford campus. Making the presentation was SWOSU President Joe Anna Hibler.

Imation Enterprises Corp. supports new SWAT program

Jeffrey Gaines (right), human resource site manager at Imation Enterprises Corp. in Weatherford, recently made a \$1,200 contribution on behalf of the company to help with a new program at SWOSU called SWAT (Southwestern Assistance Team). The program is designed to unite first-year students with upper class students to assist making the transition to collegiate life. Student Government Association members accepting the donation were (from left): Dr. Paulette Woods, Tamra Misak, Bryan Evans and Kay Robinson.



More than \$12,000 given to date by ANR Pipeline



ANR Pipeline Company with offices in Weatherford, Mooreland, Elk City and Enid recently made a \$2,000 contribution to the Southwestern Oklahoma State University Language Arts Department.

Making the donation was Joe North (right), superintendent of the Weatherford office. Accepting for SWOSU was Dr. Jerry Nye, chairman of the Language Arts Department. The money will be used to purchase a speed copier for audio tapes and a disc player and speaker for the foreign language lab at SWOSU.

Since 1988, ANR has made contributions in excess of \$12,000 for various departments at SWOSU.

Corporate matching gift companies lend support to higher education

The companies listed below match donations made to SWOSU by their employees. The match could be a straight dollar for dollar match, a two-to-one match, or three-to-one match. This partnership is made possible by these companies who understand the importance of financial support to educational institutions. Ask if the company you work for has a matching donation program.



Air Products and Chemicals, Inc.	Merck Company Foundation
Allied Signal Corporation Foundation	National Distillers & Chemical Corporation
Amfac Foundation	National Medical Enterprises
Archer-Daniels-Midland Foundation	Norton Company Foundation
ARCO Foundation	Occidental Petroleum Charitable Foundation
Asarco Foundation	Oklahoma Gas & Electric Company Foundation
AT&T	Pennwalt Foundation
Blount Foundation	PepsiCo Foundation
Boise Cascade Corporation	Phillips Petroleum Company
Bridgestone/Firestone	Pillsbury Company
Brockway Glass Company Foundation	Prudential Foundation
Brunswick Foundation	Revlon Foundation
Burlington Northern Foundation	Rexnord Foundation
Cabot Corporation Foundation	SAFECO Corporation
Cities Service Foundation	Santa Fe Southern Pacific Foundation
Cleveland-Cliffs Foundation	Scott & Fetzer Foundation
Clevepak Trust	Shaklee Corporation
Container Corporation of America Foundation	Shell Companies Foundation
Cooper Industries Foundation	Southwestern Bell Corporation
Corning Glass Works Foundation	State Farm Insurance
Deluxe Check Printers Foundation	Tenneco Inc.
Exxon	Texaco Philanthropic Foundation
Fisher-Scientific International, Inc.	Texas Instruments Foundation
General Mills, Inc.	3M Company
Goodrich (B.F.) Company	Travelers Companies Foundation
Grace Foundation	Union Pacific Foundation
Halliburton Foundation	United States Gypsum Foundation
Harsco Corporation Fund	UOP Foundation
HCA Foundation	Vulcan Materials Company
IBM	Wells Fargo & Company
ITT Corporation	WESTVACO
Johnson Controls Foundation	Wheelabrator Technologies, Inc.
Kerr-McGee Foundation	Whittaker Corporation
Koppers Company Foundation	Williams Companies Foundation
Marathon Oil Foundation	Winthrop, Inc.
Mead Corporation Foundation	WMX Technologies, Inc.

Local chamber of commerce raises near \$11,000 for student scholarship awards

A first-time coordinated effort to raise additional scholarship money to bring students to Southwestern Oklahoma State University in Weatherford is off to a very successful start.

The Weatherford Area Chamber of Commerce is sponsoring the project headed up by Weatherford businessman Brad Berrong. As of August 1, a total of \$10,900 had been raised by 26 businesses and individuals.

The money, according to Weatherford Area Chamber of Commerce Executive Director Randy Hacker, will be used to entice non-Weatherford High School students to consider SWOSU as their university choice. The scholarships will be offered this summer to prospective students.

"We know how important Southwestern Oklahoma State University is to the economy of not just Weatherford but the surrounding area," Hacker said. "The chamber wanted to participate in the efforts to in-

crease enrollment at SWOSU. Every time a new student comes to Weatherford, that means additional income for the area economy."

"The chamber wanted to participate in the efforts to increase enrollment at SWOSU. Every time a new student comes to Weatherford, that means additional income for the area economy."

—Randy Hacker
Weatherford Area Chamber of Commerce
Executive Director

The money raised will not affect Southwestern's current scholarship program through the university and foundation.

"Today's students are shopping around for the best deal," SWOSU President Dr. Joe Anna Hibler said. "In the majority of cases, students are going to attend a university where they are offered a scholarship. We see each year many students with

good grades and ACT scores who don't quite qualify for a scholarship. Many times these students would come to SWOSU if a scholarship

was available. This effort by the chamber of commerce will help us with these students."

The idea for the scholarship drive was the result of a meeting between Hibler, Hacker and current chamber president Harold Wright. A committee was formed consisting of Berrong, Wright, Jeff Gaines, Bill Kermis, David Kelley, Jim Waites and Evan Zorn. It is hoped

the drive will become an annual effort.

Businesses or individuals who are interested in giving to the drive should contact Hacker at 772-7744, Berrong at 772-3329 or Wright at 772-5939.

Businesses and individuals who have contributed so far include: David Kelley, Ron and Laquita Harris, Magill Insurance, KWEY Radio, Bluncks Studio, Imation, Public Service Company, Midfirst Bank, United Supermarkets, American Insurance Group, Puckett's Food Stores.

Also Tautfest and Wright Rentals, Zoeller Davidson Ford, Classic Cable, Brad and Jeanine Berrong, The Klostet, Lockstone Funeral Home, Dr. Douglas B. Cook, Marcy Distributing, Kelley Jewelers.

Others include Britton, Kuykendall & Miller CPAs, King's Gift and Flower Shop, Nabors Shoe Center, Donald King, Pink Turtle Gifts and John Donley, Attorney.

Art building is display site

Texas couple gives artwork to university



Doris and Harry Stallings of Wellington, Texas show the artwork they donated to the Southwestern Foundation. The art is being displayed in the art building on the Weatherford campus. The donation was appraised at over \$1,000.

Let's stick together

Need a new SWOSU Alumni or Foundation donor decal sticker? If yours is faded, torn, or just need another one, call: 405-774-3267.

Five golfers earn All-American honors

Southwestern Oklahoma State University's men's and women's golf teams concluded the 1996-97 seasons with excellent showings.

The men's squad finished third at the 46th annual NAIA national tourney at the Tulsa Country Club in Tulsa, while the SWOSU women placed fifth at the 3rd annual NAIA national tourney held in West Palm Beach, Fla.

In addition, a school-record five golfers were named NAIA First Team All-Americans. Three men's players—Joel Burleson of Arapaho, Cory Smith of Elk City and Greg Jones of Edmond—finished in the top 15 at the national tourney

and were named All-Americans. Two women's golfers—Rachel Preble of Del City and Melanie Folsom of Tulsa—placed in the top 10 and, likewise, were named All-Americans.

Southwestern's men shot a 288 on the final day of competition to jump from 10th place to third with a 1190 total. It was the second straight year that SWOSU finished third at the national tourney.

SWOSU was led by juniors Burleson (73-72-76-69=290) and Smith (72-73-76-71=292) and freshman Jones (75-78-73-69=295). Burleson ended up tied for sixth, while Smith finished

eighth in the individual standings. Jones tied for 13th.

Southwestern's other representatives were seniors Steve Thomas (84-79-72-81=316) of Del City and Cory Reneau of Borger, Texas (83-84-79-79=325).

Mobile (AL) won the tourney title at 1152.

In the women's tourney, Southwestern's Preble finished second in the individual standings. The junior shot rounds of 80-74-79 for a three-day total of 233, three shots behind the winner. Folsom had rounds of 84-78-80 for a 242 total which tied for 10th.

Southwestern ended up with a 995 total which was

one shot behind fourth-place Southern Nazarene. Tri-State (IN) won the tourney with a 970 total.

Other SWOSU representatives at the national tourney were Kala Freeman, Arnett, 82-88-82=252; Janie Cooke, Borger, Texas, 92-93-96=281; and Jill Andreson, Elk City, 106-88-88=282.

This was only the second year that Southwestern has fielded a women's golf squad.

SWOSU head golf coach Cecil Perkins will return all five women's golfers next season and three of the five men's players as the Bulldogs continue the transition to NCAA Division II and the Lone Star Conference.

'77 Apple Bowl Team plans twenty-year reunion

A reunion is being planned to celebrate the trip the 1977 SWOSU football team made to the Apple Bowl in Seattle, Wash. The reunion will be held Oct. 4, 1997, which is SWOSU's homecoming weekend.

Team member Mike D. Brown of Weatherford,

along with his wife Debbie, are making the arrangements for the reunion. They are asking for help to find several addresses for members of the roster.

They do not have addresses for the following:

David Armstrong, Robert Birdges, Lewis Blanton,

Victor Coleman, Gary Cooper, David Denning, John Edwards, Ted Fitzhugh, Daniel Ham, Dwight Jones, Sam McKee, Jerome Newry, Keith Orange, Floyd Rogers, Larkin Ryal and Herbert Watson.

If you have addresses or know how to reach these

former players, please contact Mike and Debbie Brown, 900 Eldorado, Weatherford, OK 73096; or (405) 772-6343 (home); Mike's work 772-8833 or Debbie's work 774-3063 or send email to brownd@swosu.edu.

Occupational therapy assistant program gets thumbs up

Southwestern Oklahoma State University in Weatherford and Sayre and Caddo-Kiowa Vocational Technical Center in Fort Cobb recently received word that its occupational therapy assistant program was awarded full accreditation.

The program, which was started in 1996, received a positive report from the Accreditation Council for Occupational Therapy Education with no weaknesses or deficiencies noted. With ac-

creditation, graduates of the program are now able to sit for the national certification examination administered by the National Board for Certification in Occupational Therapy.

In the latest accreditation report, major strengths of the program included:

—administrations of both Caddo-Kiowa Vo-Tech and SWOSU were recognized for aggressively addressing their strategic vision of enhanced health care delivery for rural Oklahoma. The innovative

use of articulation agreements facilitated unprecedented sharing of resources and profound change within the combined service region.

—Jerry Martin, superintendent at CKVTC, was recognized for his commitment to the establishment of the program.

—Wade Walling, CKVTC assistant superintendent; Glenda Taylor, program supervisor; Sheri May, program director; and Rita Spradlin, fieldwork coordi-

nator and instructor, were commended for their outstanding work in developing the program.

—The program was commended for developing an exemplary Clinical Supervisor's Handbook to guide the fieldwork portions of the curriculum.

—Members of the program's advisory committee and the clinical educators were recognized for their support of the program.

Alumni Album

Former Southwestern Graduates

1940

Doris Lowry Corley is a Weatherford High School graduate who earned her BS in business education in 1942. She is the president of Corley Paper and Box Company in Midland, Texas. This paper wholesale warehouse that she and her husband started in 1957, also has locations in Odessa and Big Spring, Texas. Her sons and son-in-law help her run the business.

1950

Cordelia McCullough, a Carnegie High School graduate, earned a BS in 1959. She teaches at Carnegie Elementary School. Her sons, Mark and Brian both graduated from SWOSU in 1982 and 1985, respectively.



ARE YOU MOVING?

IF YOU HAVE JUST MOVED OR ARE PLANNING TO MOVE, PLEASE LET THE ALUMNI ASSOCIATION KNOW YOUR NEW ADDRESS.

WE WANT TO BE ABLE TO SEND YOU ALUMNI INFORMATION AND EVENT DATES.

JUST CALL US AT (405) 774-3267, DROP US A NOTE AT THE SWOSU ALUMNI OFFICE, 100 CAMPUS DRIVE, WEATHERFORD, OK 73096 OR REACH US VIA THE INTERNET AT OUR EMAIL ADDRESS: SKARDAJ@SWOSU.EDU.

1960

Robert Corbin is a Cordell native who hold a double major in physics and math. The 1967 graduate is a geoscientist working for Conoco in Ponca City. He and wife, Lois, have two sons: Jason and Ryan.

1970

James Spoon of Sand Springs is a 1975 graduate that has been awarded the Wyeth-Ayerst Laboratories Bowl of Hygeia Award for outstanding community service by a pharmacist. He and wife, Teresa Lynn, have three children: Jennifer, J.D. and Andy.

1980

Gary Gackstatter graduated in 1982. He is the director of bands at Cowley County Community College and director of the Winfield Regional Symphony. During the summer of 1997, he joined the Grammy Award winning Paul Winter Consort to premiere a new symphony, "Grasslands."

1990

Sharon Gilliland earned her BS in education in 1995. She has been hired as the instructor for Sayre Public School's alternative education program. She and husband Dean live in Elk City after both retired from the U.S. Navy after 20 years of service.

Web page

All alumni and friends with Internet access are encouraged to visit the Southwestern Oklahoma State University web site for both the Weatherford and Sayre campuses.

The address is: <http://www.swosu.edu>

The site has been up and running for nearly one year. Many aspects of the university are featured, so all alumni and friends are encouraged to "look in" at Southwestern and see what is happening.



DO YOU KNOW WHERE YOUR DIPLOMA IS? MORE THAN 160 REMAIN UNCLAIMED

The Registrar's Office has quite an accumulation that will be of interest to specific alumni. According to Registrar Bob Klaassen there are approximately 164 unclaimed diplomas that belong to graduates from as far back as 1966.

If your name appears on this list, send a check or money order for the amount indicated to: SWOSU Registrar's Office, 100 Campus Drive, Weatherford, OK 73096.








1966							
Lousch, Richard Wayne	Master of Ed	\$2.50		Whitley, Sandra Louise	Master of Ed	2.50	
1969				1979			
Holman, Shirley Aaron Caldwell	BA in Ed	12.50		Brown, Clark Travis	BS in Pharmacy	12.50	
1971				Jones, Janice S. Graves	Master of Ed	2.50	
Beavers, Pamela Beth	BS	12.50		Travis, Ginger J. Kane	Master of Ed	12.50	
Compston, Monte L.	BA in Ed	12.50		Verhines, Steve E.	BS in Ed	12.50	
Copple, Oral Michael	BS in Pharmacy	2.50		1980			
Harder, Nolita Jo	BS in Ed	2.50		Alexander, Steven T.	BS	12.50	
Igo, Charles Roger	BA in Ed	12.50		Hansen, Florence Clare Haskell	Master of Ed	2.50	
Maloy, Loretta Ann Horrell	BS in Ed	2.50		Margerum, Lois Lynn K.	Master of Ed	2.50	
1972				Stephens, Michael Alan	BS	12.50	
Davis, Dale Eugene	BS	12.50		Taylor, Virgil Everett	Master of Ed	12.50	
Fleming, Richard Milam	BS in Ed	12.50		Woolbright, Dianna Beth Stout	BS in Ed	12.50	
Lyon, John Clark	BA	2.50		1981			
1973				Balentine, Janie L. Stacy	Master of Ed	2.50	
Hodges, Dale L.	Master of Ed	2.50		Tran, Hong Bich	BS in Pharmacy	2.50	
Johnson, Gerald James	BS	12.50		1983			
Monroe, John Alton	BA	2.50		Adams, Tom P.	BS	12.50	
Sanders, Perry Ray	BS	12.50		1984			
Taylor, Tommy Thurman	Master of Ed	12.50		Charles, Frances N.	BS	2.50	
White, Melba S.	Master of Ed	12.50		Fincher, LaRonda	BS	12.50	
1974				1985			
Burrahm, Richard Dean	BS	2.50		Stearman, Michael S.	BS in Ed	12.50	
Craig, Joe Bob	Master of Ed	2.50		Wilhelm, Terry Lynn	Master of Ed	12.50	
Crow, Kenneth Wayne	BS	12.50		1987			
Fitch, Donna Sue	BS in Ed	12.50		Pittman, Roger Alan	BA	27.50	
Hunter, Margaret Ann Holsapple	Master of Ed	12.50		1988			
Marcy, Catherine Kay	BS in Ed	2.50		Crockett, Joe David	BS	27.50	
Martin, Jr., Lucian H.	BS in Pharmacy	12.50		Fitch, William Stewart	BA	27.50	
Monts, Isaac Lewis	Master of Ed	12.50		Reynolds, Christy Diane	BS in Ed	2.50	
Nicholson, Alton Grant	BS	2.50		Williams, Kayla Jan New	BA in Ed	2.50	
Reed, Gregory Wayne	BS	2.50		1990			
Reynolds, Thomas Maywood	BS	12.50		Hill, Cary Christian	BS	2.50	
Rhoads, Elizabeth Kay Wallace	BS in Ed	12.50		Hines, Billy Lloyd	Master of Ed	27.50	
Tande, Gary Otto	BME	2.50		1991			
Williams, Frances Ellen	Master of Ed	2.50		Bolf, Jeffrey Lynn	BS	Bus. Hold	
1975				Buschman, Doyle A.	BS	27.50	
Blake, Ross D.	BS in Ed	12.50		Randall, Stephanie Michelle	BS	27.50	
Carter, Teresa Annelle Barnard	BS	12.50		1992			
Williams, Ronald I.	BS in Ed	12.50		Baccus, Rodney L.	BS in Nursing	Bus. Hold	
Winfield, Marilyn Kay Pilkington	BS	12.50		Morrison, Carrie Michelle	BS	27.50	
Wittrock, Joseph F.	BS	12.50		Musick, Carla Jane	BS in Ed	2.50	
1976				Reynolds, Christopher Brian	BS	Bus. Hold	
Coleman, Homer W.	BS	2.50		Saxton, Randi Kay Irons	BS in Ed	27.50	
Douglas, Gwendolyn Kay Mustain	BS in Ed	12.50		Toppah, Kathleen L. Bearbow	BS	Bus. Hold	
Johnson, Joyce Charlene Ogletree	Master of Ed	12.50		1993			
Partovi, Charlene Sue Shipley Bass	BS in Ed	2.50		Elliott, Naomi Nmano	BS in Pharmacy	Bus. Hold	
Rhea, Barbara Louise Bowers	BA	12.50		Kourt, Kevin Brent	BS in Pharmacy	27.50	
1977				McGee, Kevin Dale	BS in Eng Tech	27.50	
Barrow, Mark Kevin	BS	12.50		Stokes, Donnie Ray	BS	27.50 & Bus. Hold	
Hall, Charles Wayne	Master of Ed	12.50		West, Anthony Dudley	BS	Bus. Hold	
Johannesmeyer, Patricia	Master of Ed	12.50		Williams, Lisa Gaye	BS	Bus. Hold	
Weitz, Gail Robertson	BA in Ed	2.50		1994			
Williams, Kenneth Wade	BS	12.50		Iwuala, Jude C.	BS in Pharmacy	Bus. Hold	
1978				Millican, Marian L. Thomas	Master of Ed	27.50	
Dennis, Marie Oddette Matthews	BS in Ed	2.50		Millican, Meridith Michelle	BA	27.50	
Rotherford, Jimmy Allen	Master of Ed	12.50		Poindexter, Russell Brent	BA in Ed	2.50	

Diploma list continued on next page

Diploma list continued from previous page

Washington, Alrick Ramon	BS	Bus. Hold	Crawford, Anita Sue Tyson	BS	Bus. Hold
1995			Derichsweiler, Kris (Langilotti)	Master of Ed	27.50
Amos, Sarah J.	BS in Nursing	Bus. Hold	Dillahunty, Darci Ann	BS	27.50
Barney, Robert K.	BA	27.50	Dunham, Stephanie Runia	BS	27.50
Cabiness, Rodney Dale	BS	27.50	Erwin, Kimberly	Master of Ed	27.50
Carpenter, Brenda	Master of Ed	27.50	Everett, Jeffrey David	BS	2.50
Collins, Lillian Ray	BS in Ed	27.50	Haggard, Mandy Jean Wright	BS	2.50
Combs, Marile Becky Green	Master of Ed	27.50	Hendrickson, Jackie Lynn	BS	Bus. Hold
Garretson, Randy Ardell	BME	2.50	Hightower, Brian Lee	BS	27.50
Grigg, Janet Gail	Master of Ed	2.50	Jenks, Amy Jo	BS	27.50
Halverson, Tana	BA	27.50	Johnson, Tim L.	BS	Bus. Hold
Hanks, Michael Paul	BA	27.50	Justice, Yvonne Christine	Master of Ed	2.50
Hartman, George	BS	27.50	Lewallen, Heather Anne	BS in Ed	2.50
Hartman, John H.	BS	Bus. Hold	Lewis, Robert Howard	BS	Bus. Hold
Hayes, Barbara Ann	Master of Ed	Bus. Hold	Love, Christine E.	Master of Ed	27.50
Hightower, Brian Lee	BS in Ed	27.50	Morris, Marc R.	BS in Ed	Bus. Hold
Hurst, Ryan Brett	BS in Pharmacy	27.50	Mugambi, Flora Mwari	Master of Ed	Bus. Hold
Johnston, Shelley Faye	BS in Ed	2.50	Nichols, Nicole Lea	BS in Ed	2.50
Krohmer, Michael Ray	BS in Gen Tech	27.50	Patel, Rakesh B.	BS in Pharmacy	27.50
Martinez, Jose' A.	BS	Bus. Hold	Pearcy, Rochelle Elease Ray	BS	27.50
Mathews, James Marian	BS	Bus. Hold & R & B	Richeson, Tammy L.	Master of Ed	27.50
Miller, Craig Gale	BS of Rec	Bus. Hold	Smith, Valori Ann	BS	2.50
Moghadam, Gail Deane Mason	BS in Ed	27.50	Soto, Rene E.	BS	2.50
Pugh, Nikki L.	Master of Ed	2.50	Steffensen, Denise Renee	BS in Rec	2.50
Reimer, Delmer Floyd	BA	27.50	Williams, Brandon	BS in Ed	27.50
Rightnowar, Harley O.	BS	27.50	Williams, Calvin	BS in Rec	Bus. Hold
Sanders, Dannie Lee	BA of Ed	2.50	Wood, William Keith	BS in Ed	27.50
Socall, Rita D.	BA	27.50	1997		
1996			Birdsell, Karen Jill	BS in Pharmacy	2.50
Adrian, Matthew Scott	BS	2.50	Colby, Peggy anne Fairless	BS in Nursing	2.50
Bair, Brook Lee	BS in Ed	2.50	Garrett, Stephanie DeAnn	BS	27.50
Barbarick-Herring, Shelly R.	Master of Ed	2.50	Haggard, Ryan M.	BS in Rec	2.50
Becker, Brandy Sue	BS	27.50 & Bus. Hold	Ivey, Marvin Karl	BS in Ind Tech	2.50
Boyer, Tammy Kim	BS	Bus. Hold	Kirby, Brandon Lee	BS in Rec	Bus. Hold
Brown, Michael L.	BS	27.50	Lubbers, Sandra Kay	BS in Ed	2.50
Clothier, Paula Sue	BS	Bus. Hold	Reed, Thomas William	BS in Ed	2.50
			Syed, Ali Imran	BS	Bus. Hold
			Trivette, Gina Marie Gerardy	BS	2.50

Dawg Dates

Sept.	13	SWOSU Parent's Day 
	9	*Jeff Dunham, Comedian—Fine Arts Center—7:30 pm
	27	Miss Southwestern Contestant Day—Downtown Weatherford Merchants—10 am-3 pm
Oct.	2	*Moira Gunn, Commentator—Fine Arts Center—7:30 pm
	4	1977 Apple Bowl 20-Year Reunion
	4-5	1997 Homecoming Activities
	16-17	Fall Break
	25	Miss Southwestern Pageant—Fine Arts Aud—7:30 pm
Nov.	6	*Don Coldsmith, Author—Conference Center—7:30 pm
	16	Jazz Ensemble Concert—Fine Arts Center—3:00 pm
	20-21	*"Seems to Be Players," Children's Theatre; <u>The Seven Voyages of Sinbad</u> —Fine Arts Ctr—(7:30 pm-20th & 10 am-21st)
	26-28	Thanksgiving Holiday Break
Dec.	19	Christmas Break Begins
Jan.	8	1998 Spring Semester Begins
	22	*Music Central—Fine Arts Center—7:30 pm 
Feb.	11-13	Jazz Festival—Fine Arts Center 
	18	Public Lecture by Dr. Donald Worster, Environmentalist—7:30 pm
	22	Wind Ensemble Concert—Fine Arts Center—3:00 pm
	24	Orchestra Concert—Fine Arts Center—8:15 pm
	26	*Col. Jerry and Nancy Jaxx, "Ebola Virus" experts—Fine Arts Center—7:30 pm
Mar.	5	Symphonic Band Concert—Fine Arts Center—8:15 pm 
	9-13	Spring Break
	24	*National Shakespeare Co., "Richard the III"—Fine Arts Center—7:30 pm

*Panorama Events

1997-98 Women's Basketball Schedule

<u>Date</u>	<u>Opponent</u>	<u>Place</u>	<u>Time</u>
Nov. 15	USAO	Chickasha	2 pm
Nov. 18	Phillips OK	Enid	7 pm
Nov. 20	West Texas A&M	Weatherford	6 pm
Nov. 22	Eastern NM	Weatherford	6 pm
Nov. 22	Texas Woman's	Weatherford	2 pm
Nov. 27-29	Queen's Classic	Plainview TX	TBA
Dec. 2	Langston OK	Weatherford	7 pm
Dec. 4	Midwestern TX	Wichita Falls TX	7:30 pm
Dec. 6	Tarleton TX	Stephenville TX	6 pm
Dec. 9	Panhandle OK	Weatherford	7 pm
Jan. 3	Cameron OK	Lawton	6 pm
Jan. 8	East Central OK	Weatherford	6 pm
Jan. 10	Southeastern OK	Weatherford	6 pm
Jan. 15	Ouachita Baptist AR	Arkadelphia AR	6 pm
Jan. 17	Harding AR	Searcy AR	2 pm
Jan. 22	Northeastern OK	Tahlequah	6 pm
Jan. 24	Central OK	Edmond	6 pm
Jan. 31	Cameron OK	Weatherford	6 pm
Feb. 5	Northeastern OK	Weatherford	6 pm
Feb. 7	Central OK	Weatherford	6 pm
Feb. 12	East Central OK	Ada	6 pm
Feb. 14	Southeastern OK	Durant	6 pm
Feb. 19	Ouachita Baptist AR	Weatherford	6 pm
Feb. 21	Harding AR	Weatherford	2 pm



Alumni office searching for yearbooks

The Southwestern Alumni Office keeps at least one copy of the yearbook from each year. Unfortunately, there are a few books that we currently do not have.

If any alumnus would like to donate a missing book, please contact the alumni office at (405) 774-3267.

These years are needed:

1914	1951
1918	1974
1931	

1997-98 Men's Basketball Schedule

<u>Date</u>	<u>Opponent</u>	<u>Place</u>	<u>Time</u>
Nov. 14	Southern Colorado Classic	Pueblo CO	8 pm
Nov. 15	Southern Colorado Classic	Pueblo CO	5 pm
Nov. 20	West Texas A&M	Weatherford	8 pm
Nov. 22	Eastern New Mexico	Weatherford	8 pm
Nov. 25	Oklahoma City Univ	Weatherford	7 pm
Nov. 28-29	SNU Classic	Bethany	TBA
Dec. 4	Midwestern TX	Wichita Falls TX	8 pm
Dec. 6	Tarleton TX	Stephenville TX	8 pm
Dec. 17	Oklahoma City Univ	Oklahoma City	TBA
Jan. 3	Cameron OK	Lawton	8 pm
Jan. 5-6	OBU Classic	Shawnee	TBA
Jan. 8	East Central OK	Weatherford	8 pm
Jan. 10	Southeastern OK	Weatherford	8 pm
Jan. 15	Ouachita Baptist AR	Arkadelphia AR	8 pm
Jan. 17	Harding AR	Searcy AR	4 pm
Jan. 22	Northeastern OK	Tahlequah	8 pm
Jan. 24	Central OK	Edmond	8 pm
Jan. 31	Cameron OK	Weatherford	8 pm
Feb. 5	Northeastern OK	Weatherford	8 pm
Feb. 7	Central OK	Weatherford	8 pm
Feb. 12	East Central OK	Ada	8 pm
Feb. 14	Southeastern OK	Durant	8 pm
Feb. 19	Ouachita Baptist AR	Weatherford	8 pm
Feb. 21	Harding AR	Weatherford	4 pm



<u>Date</u>	<u>Opponent</u>	<u>Place</u>	<u>Time</u>
9-6	Abilene Christian TX	Abilene	6 pm
9-13	*W. TX A & M Univ	W'ford	7 pm
9-20	E. New Mexico Univ	Portales	6 pm
9-27	TX A&M-Commerce	W'ford	7 pm
10-4	**Ouachita Baptist AR	W'ford	2 pm
10-11	Open		
10-18	Southeastern OK	Durant	2 pm
10-25	Northeastern OK	W'ford	3:30 pm
11-1	Univ of Central OK	Edmond	2 pm
11-8	East Central OK	W'ford	2 pm
11-15	Harding AR	Searcy	2 pm

*Parents Weekend
**Homecoming



Join the Alumni Association! See what it has to offer.

Dues paid in 1997 extend from Jan. 1-Dec. 31.

Southwestern Oklahoma State Alumni Association needs your help and support. We are more active and promoting more activities for the good of Southwestern. We have a progressive group of officers and Board of Directors. The Alumni Association helps promote and assist university academic projects, aids in student recruitment, sponsors homecoming events, parents' weekend, tail-gate parties and alumni golf tournaments, in addition to many more endeavors. In the future, our goal envisions establishing alumni chapters, implementing a



1997 Membership Application Card

100 Campus Drive, Weatherford, OK 73096-3098

Code: 197

Membership dues: Yearly: \$25 Lifetime Single: \$400 Lifetime couple: \$500

Name _____
Address _____
City _____ State _____ Zip _____
Phone _____ SSN _____
High School graduated from _____
Date graduated SWOSU (sem/yr) _____
Major _____ Degree (BS, BA, MS, etc.) _____

Check payable to: **SWOSU Alumni** is enclosed
Please bill my: Visa Mastercard
Card# _____
Exp. date _____
Cardholder's signature _____

SWOSU Alumni Association E1916
100 Campus Drive
Weatherford OK 73096-3098

Address Correction Requested

Nonprofit Organization
U.S. Postage
Paid
Weatherford, OK 73096
Permit 57