



1911

## The Oracle 1911

Southwestern Oklahoma State University

Follow this and additional works at: <https://dc.swosu.edu/yearbooks>

---

### Recommended Citation

Southwestern Oklahoma State University, "The Oracle 1911" (1911). *SWOSU Yearbooks*.  
<https://dc.swosu.edu/yearbooks/8>

This Book is brought to you for free and open access by the Campus Publications & Productions at SWOSU Digital Commons. It has been accepted for inclusion in SWOSU Yearbooks by an authorized administrator of SWOSU Digital Commons. An ADA compliant document is available upon request. For more information, please contact [phillip.fitzsimmons@swosu.edu](mailto:phillip.fitzsimmons@swosu.edu).

1911

உதயகிரி

Souvenir



# THE ORACLE

Volume Six

1911

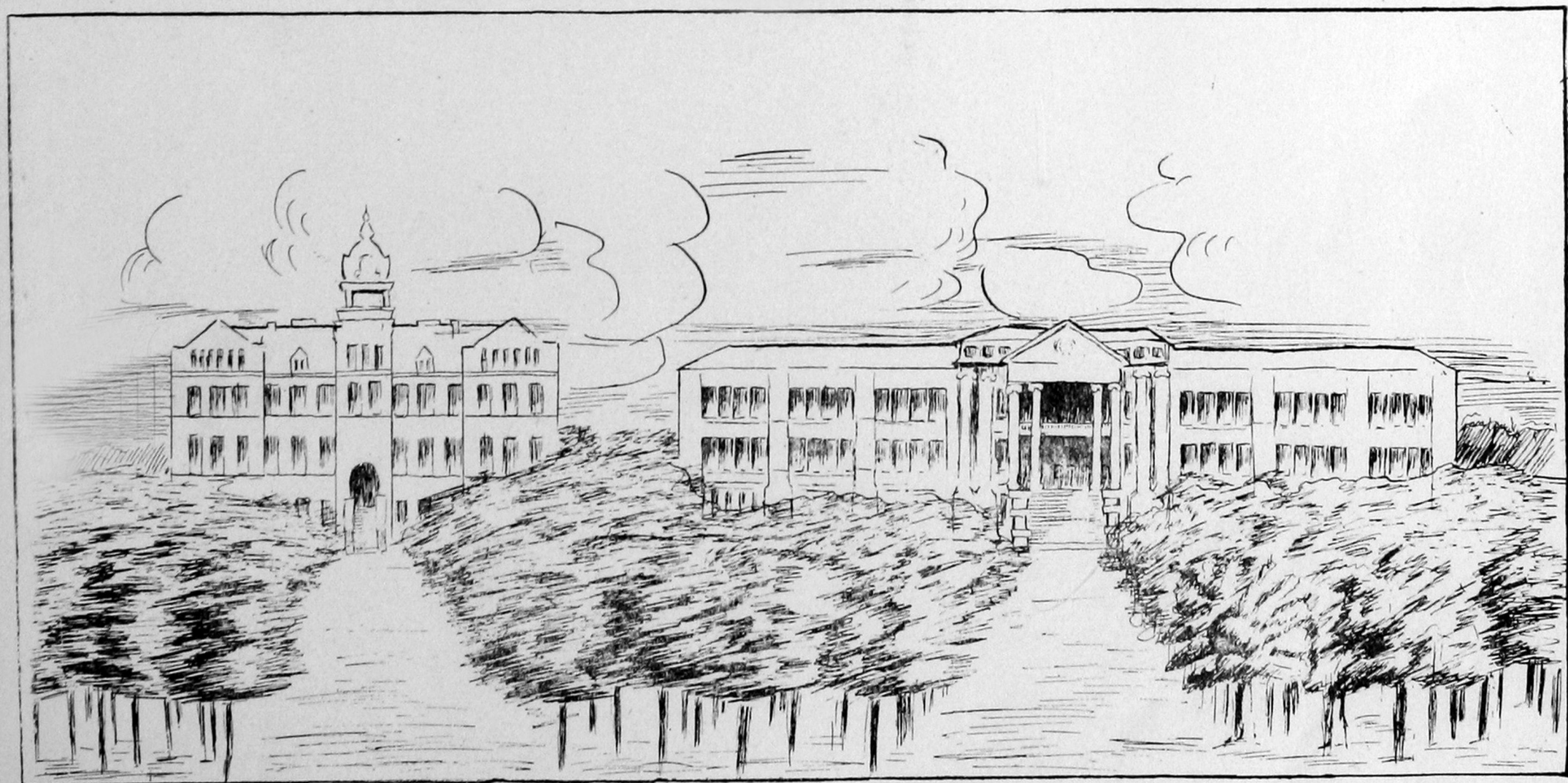
Published by Senior Class

Southwestern State Normal School, Weatherford, Okla.

## Greeting

“Here, take my picture with you, whilst ’tis so:  
For, when from whence you go,  
The next sun’s rising will behold me,  
Pale, and lean, and old.”

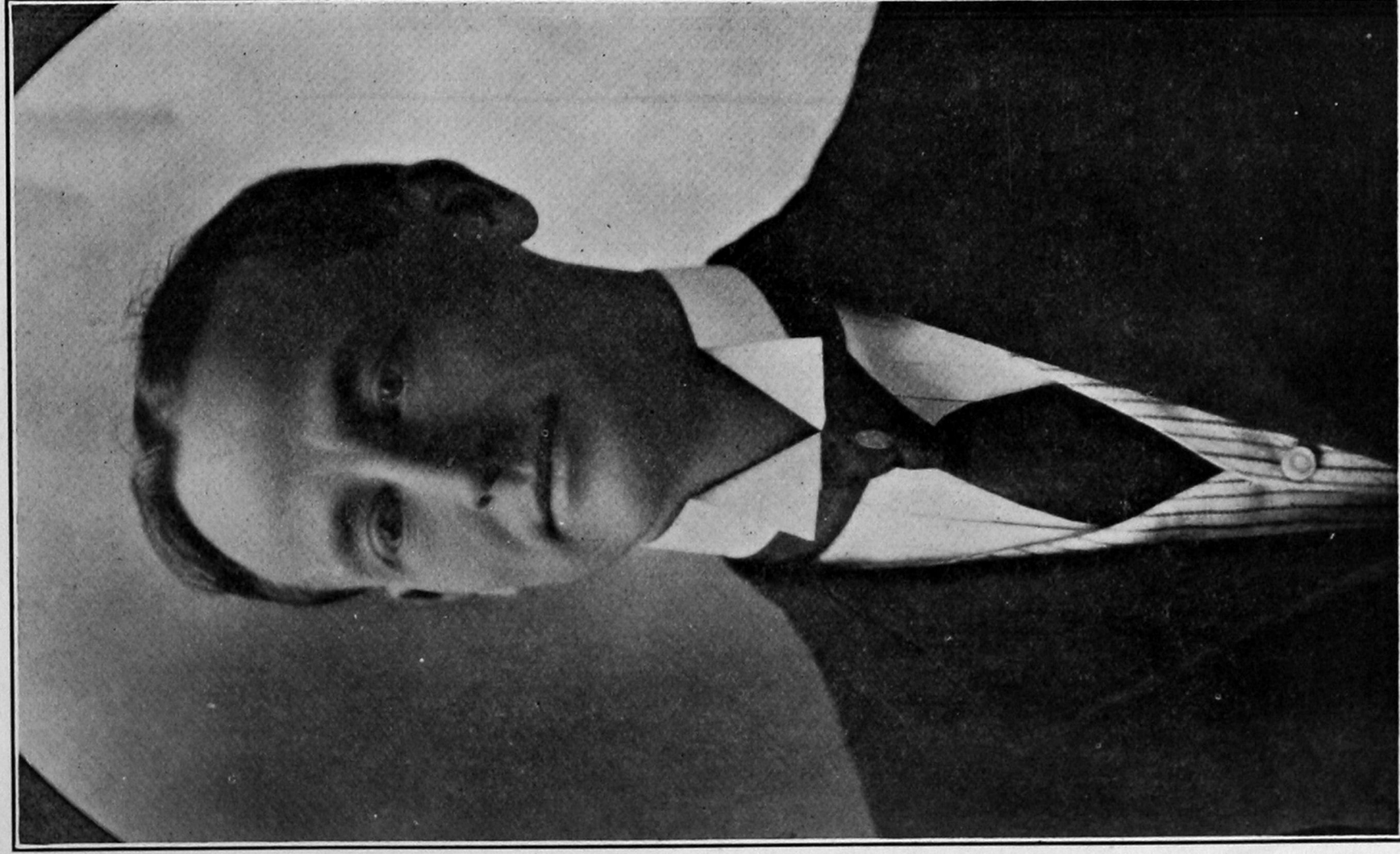




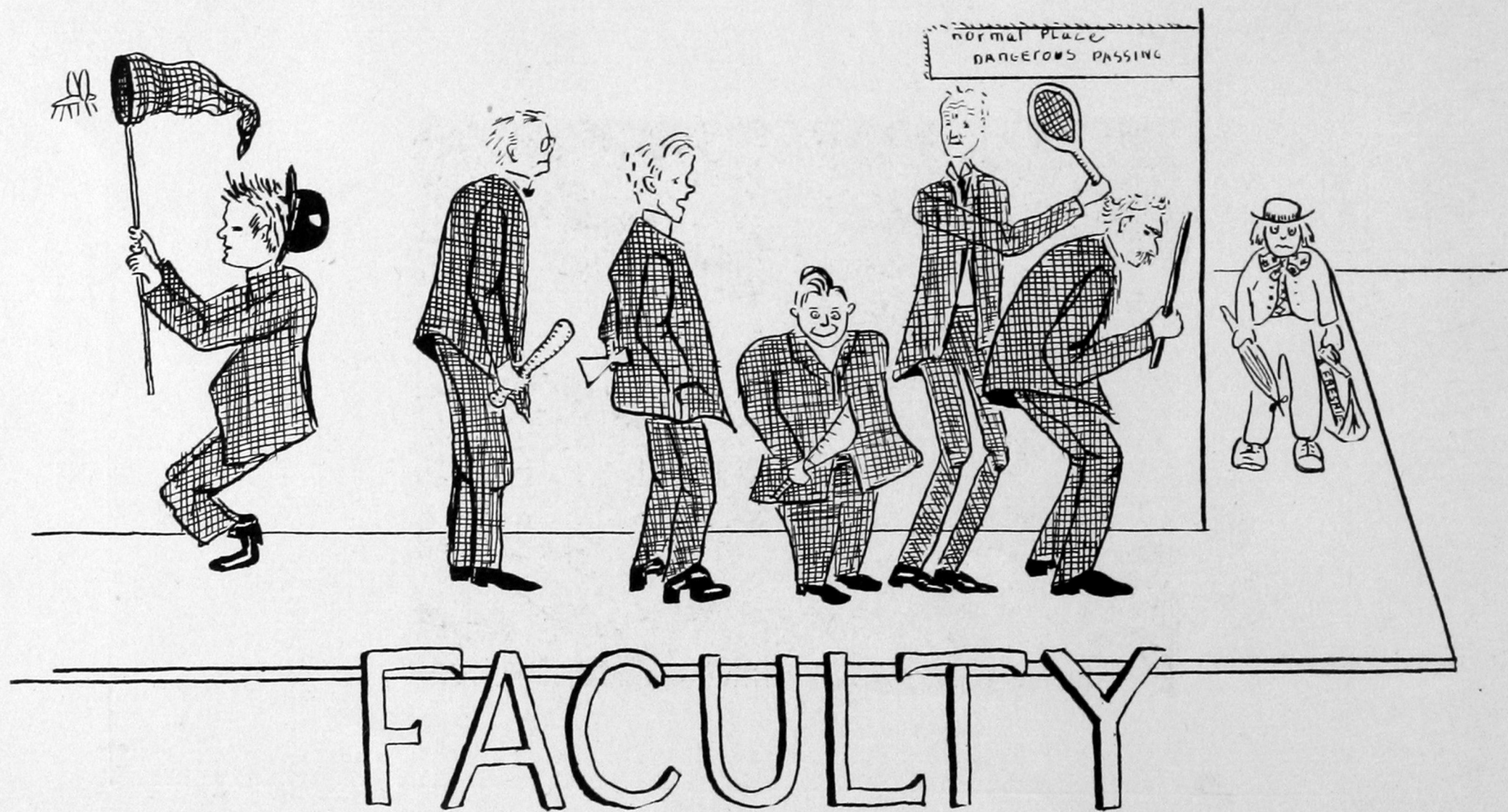
# Dedication

The class of 1911 gratefully dedicates this volume to the  
class advisor, Professor N. S. Cowart.

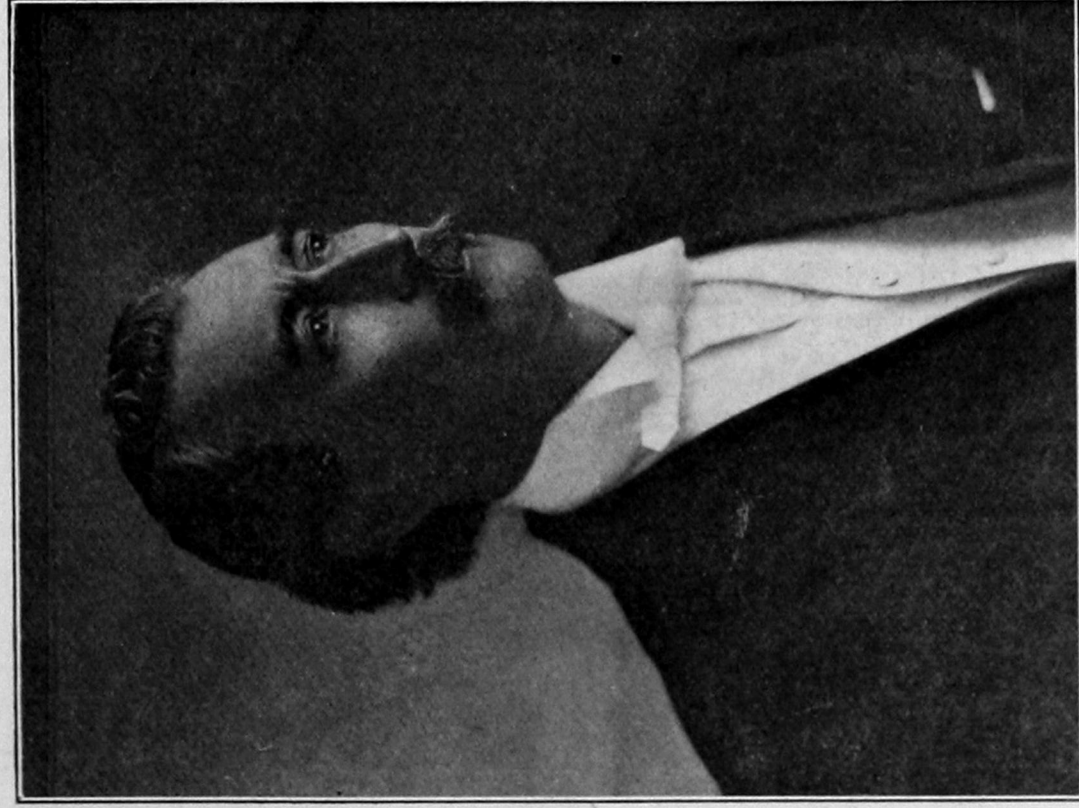




PROFESSOR N. S. COWART







JOHN FLETCHER SHARP  
PRESIDENT  
A. B., Carson and Newman College

---

**D. M. BREWER, B. S. D.**  
Department of Expression

**THOMAS ANDREW GROSS, A. B.**  
Department of Literature

**GEORGE SANDERS, A. B.**  
Latin

**W. J. POINTER, A. B.**  
Department of Physics and  
Chemistry

**NELSON S. COWART, B. S.**  
Vice-President  
Director Training School

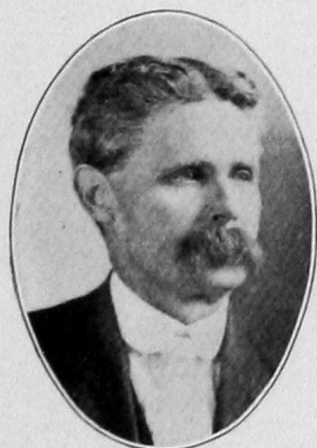
**GUY W. BOHANNAN, B. S.**  
Geology, Astronomy, Political  
Geography

**ELBERT P. DOWNING, B. S.**  
Department of English Language

**DORA STEWART, A. M.**  
Department of History

---





D. M. Brewer



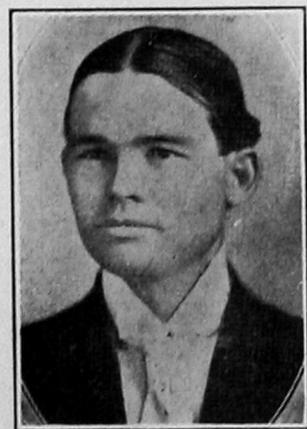
George Sanders



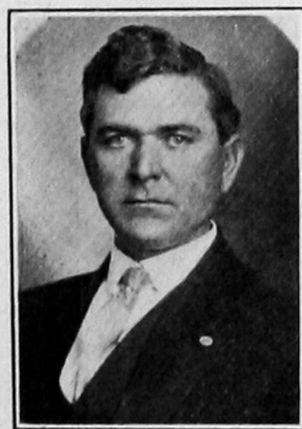
Nelson S. Cowart



Elbert P. Downing



Thomas Andrew Gross



W. J. Pointer



Guy W. Bohannon



Dora Stewart

---

**ROBERT E. LEE BURKS, A. B., A. M.**

Department of Latin

**MAUDE OLIVIA OWEN, B. S.**

Department of European History

**OPHELIA OVERSTREET, B. S.**

Department of Modern Language

**MAMIE DAVIS**

Department of Domestic Science

**FRANCIS E. HIGGINS**

Department of art

**NELLIE C. BROAD**

Secretary and Registrar

**MRS. EDNA B. MADDOX**

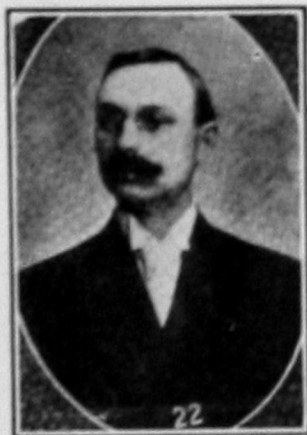
Commercial Department

**CLAUD L. SCOTT**

Department of Agriculture

---





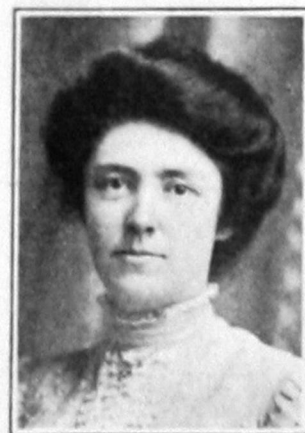
Robert E. Lee Burks



Ophelia Overstreet



Maude Olivia Owen



Mamie Davis



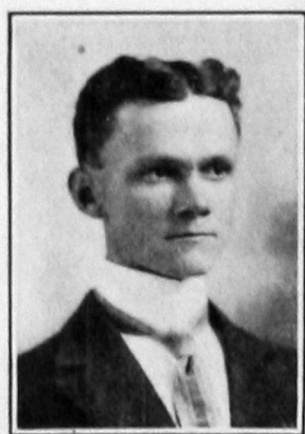
Frances E. Higgins



Mrs. Edna B. Maddox



Nellie C. Broad



Claud L. Scott

---

**HELEN M. SMITH**  
Domestic Science

**R. L. CLAYTON**  
Department of Manual Arts

**MRS. FREDRICA HALE**  
Expression

**GUY W. KIRBY, B. S.**  
Department of Mathematics

**JOHN W. BREMER**  
Director of Music

**NANCY LEE GOODMAN**  
Piano

**MOSE A. GASKILL**  
Boys Physical Director

**MRS. CYNTHIA DUNSTAN**  
Matron

---

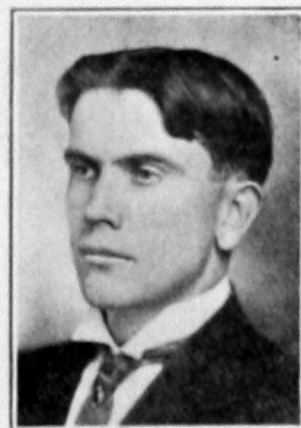




Helen M. Smith



Mrs. Fredrica Hale



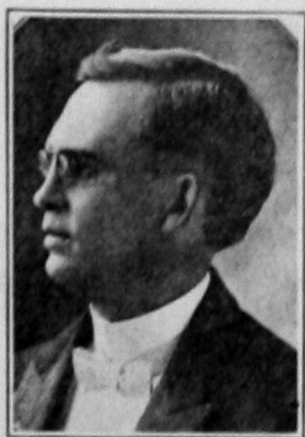
R. L. Clayton



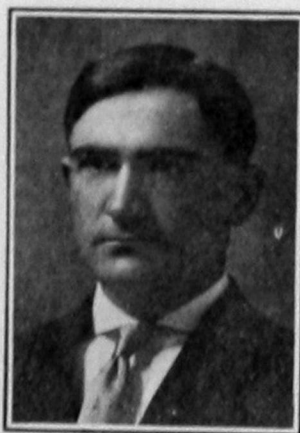
Guy W. Kirby



Nancy Lee Goodman



John W. Bremer



Moses A. Gaskell



Mrs. Cynthia Dunstan

---

**HELEN ELIZABETH NORRIS**

Piano

**JANE PORTER SLOSS**

Piano

**MRS. EMMA MILLER**

Kindergarten

**JESSIE BRANSON**

Kindergarten

**WRIGHT A. GARDNER, A. B.**

Department of Biology

**LULU E. VROOMAN**

Critic Teacher

**MRS. BERTHA FAUST, A. B.**

Critic Teacher

**MINNIE M. OSTENBERG**

Critic Teacher

---





Helen Elizabeth Norris



Mrs. Emma Miller



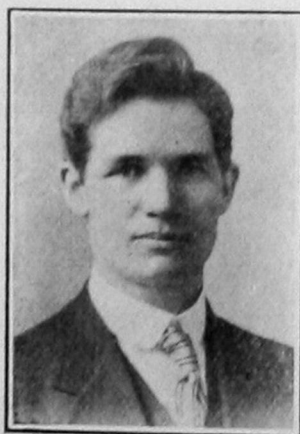
Jane Porter Sloss



Jessie Branson



Lulu E. Vrooman



Wright A. Gardner



Mrs. Bertha Faust



Minnie M. Ostenberg





## **Senior Officers**

E. M. FINDLEY, President

O. E. FERGUSON, Vice-President

CLARA THOMPSON, Secretary and Treasurer

Class Advisor, PROF. N. S. COWART

Class Color: Blue and Gold

Motto: "Dig"

## **Annual Board**

H. SCHAEFER, Editor-in-Chief

W. D. PATTERSON, Business Manager

HELEN DEMING; Assistant Editor

FAY SNYDER, Assistant Editor

**ELDON MARSHALL FINDLEY**

**Major, Science.**

President class 1911, Salutatorian of class, Vice-President Science Club.

**ETTA FISHER**

**Major, Domestic Science.**

Class Valedictorian, President Domestic Science Club, President Gamma Delta Kappa Winter Term 1910.

**ALPHA OMEGA McCALL**

**Major, English.**

Gamma Delta Kappa, Secretary Freshman Class 1908, Secretary Junior Class 1910, Secretary Gamma Delta Kappa 1910, President Y. W. C. A. 1910, Secretary Y. W. C. A. 1909, Tonkawa Delegate Y. W. C. A. 1908.

**OSCAR E. FERGUSON**

**Major, History.**

Vice-President Class 1911.

**CLARA REBECCA THOMPSON**

**Major, English.**

Secretary Sophomore Class 1909, Treasurer Senior Class 1911, Treasurer Gamma Delta Kappa.





Eldon Marshall Findley



Etta Fisher



Oscar E. Ferguson



Alpha Omega McCall



Clara Rebecca Thompson

**WILLIAM D. PATTERSON**

**Major, History.**

Business Manager Oracle, Varsity  
Basket Ball 1909-10-11, Captain 1910,  
Varsity Foot Ball 1910, Coach Girls  
Basket Ball 1910-11, Tennis Represen-  
tative 1908-09-10.

**HEDWIG ELMORE SCHAEFER**

**Major, Kindergarten.**

Editor-in-Chief Oracle, President S.  
W. N. Chafing Dish Club, President  
Gamma Delta Kappa 1910, Charter  
Member Deutsche Gesellschaft, Mem-  
ber Y. W. C. A. Cabinet 1910.

**JOHN BRYAN**

**Major, Science.**

Vice-President Class 1910, Varsity  
Foot Ball 1910, Captain 1911, Varsity  
Basket Ball 1909-10, Captain 1911,  
Varsity Base Ball 1908-09-10-11.

**FAY SNIDER**

**Major, English.**

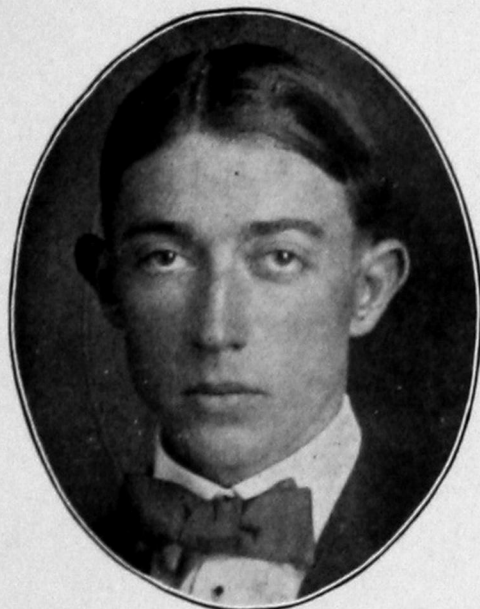
Assistant Editor Oracle, Track Team  
1910-11, Orchestra, Science Club,  
Tennis.

**LUCILE EMILY DAILY**

**Major, Science.**

Secretary Gamma Delta Kappa 1910,  
Member Domestic Science Club, Mem-  
ber of Orchestra, Member Y. W. C. A.  
Cabinet 1910.





William D. Patterson



Hedwig Elmore Schaefer



John Bryan



Fay Snider



Lucile Emily Daily

**LUTHER KITCHENS**

**Major, Science.**

President Senate 1910, Member Y.  
M. C. A., Domestic Science Club, Tri-  
angular Debate Team 1910.

**VIDA LEEPER FINDLEY**

**Major, Primary Work.**

**MARY HELEN DEMING**

**Major, Art.**

Assistant Editor Oracle, Member  
Y. W. C. A. Cabinet, Delegate to Y.  
W. C. A. Convention Tonkawa 1908.

**IVAN SNIDER**

**Major, History.**

Senate Society, Member Men's Glee  
Club, Orchestra, Member Science Club,  
St. Cecalias Club, Secretary Senate  
1910, Tennis, Track.

**MAUD MYERS**

**Major, English.**

President Y. W. C. A. 1908-09, Vice-  
President Gamma Delta Kappa 1910,  
Y. W. C. A. Delegate to Wichita 1908.





Luther Kitchens



Ivan Snider



Mary Helen Deming



Vida Leeper Findley



Maud Myers

**ERA ESTHER WELLS**

**Major, Music.**

Secretary St. Cecilians Club, Member S. W. N. Chafing Dish Club, Member Girls Glee Club, Member Y. W. C. A. Cabinet.

**GRACE A. NORRIS**

**Major, Music.**

Vice-President St. Cecilians Club, President Girls Glee Club, Member S. W. N. Chafing Dish Club, Member Y. W. C. A. Cabinet, Delegate Y. W. C. A. Convention at Winfield 1909-10.

**GERTRUDE CLARA SCHAEFER**

**Major, Art.**

President Class of Special Graduates  
Secretary and Treasurer Athletic Association Fall 1910, Artist for Oracle, Member S. W. N. Chafing Dish Club, Member St. Cecilians Club, Gamma Delta Kappa, Charter Member Deutsche Gesellschaft.

**LYNDA SHAW**

**Major, Domestic Science.**

Secretary Domestic Science Club 1910-11, President S. W. N. Chafing Dish Club 1910.





Era Esther Wells



Gertrude Clara Schaefer



Grace A. Norris



Lynda Shaw

**REBECCA COLLINGS**  
**Major, Stenography.**

Vice-President Specials.

**ESTHER CANNON**  
**Major, Stenography.**

**JUANITA RUTH JAMES**  
**Major, Expression.**

Vice-President Gamma Delta Kappa,  
Member Glee Club, Music Club, Y. W.  
C. A. Cabinet, Y. W. C. A. Delegate  
to Wichita Convention.





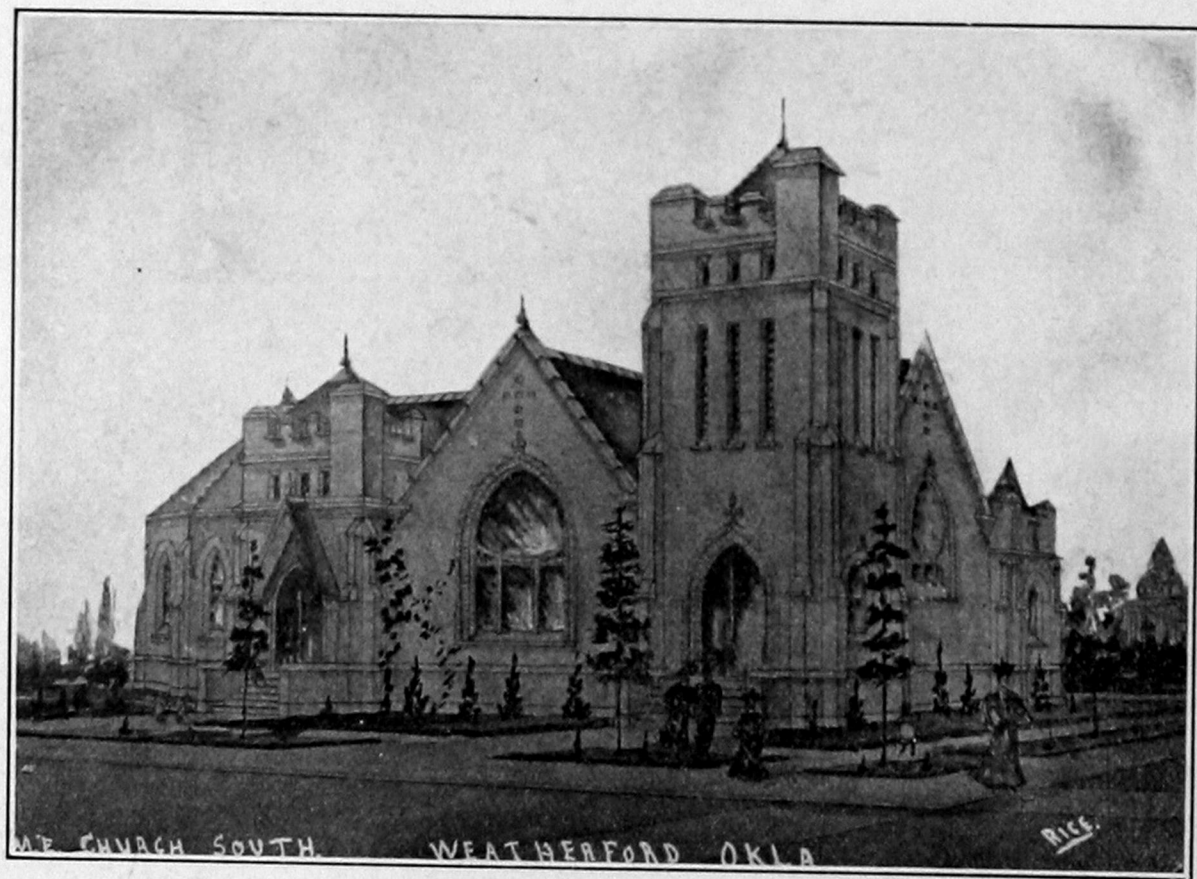
Juanita Ruth James



Rebecca Collings



Esther Cannon



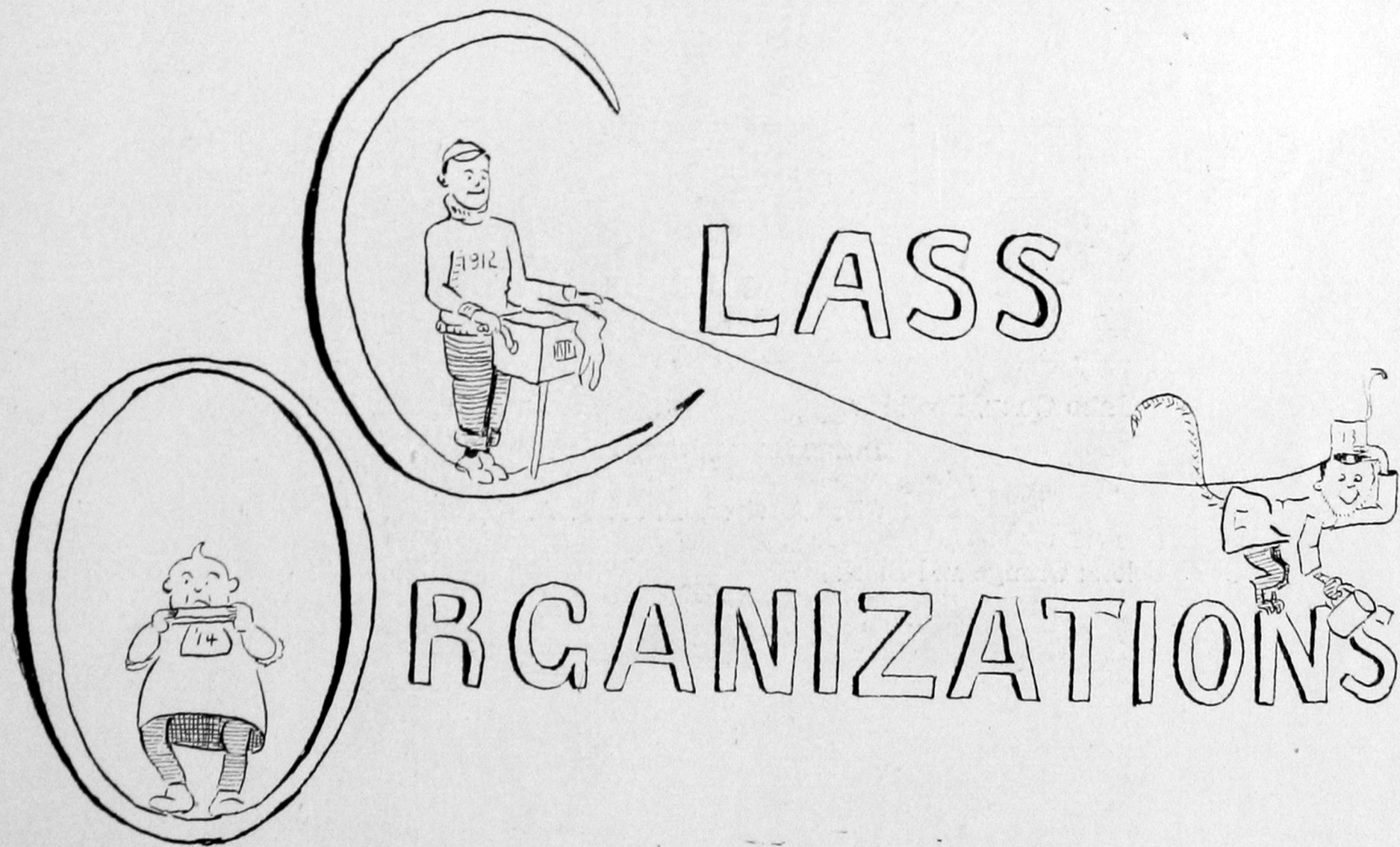






Administration Building





## **Junior Class 1912**

### **Officers**

FRED GORE, President

PEARLE STEELE, Sec'y-Treas.

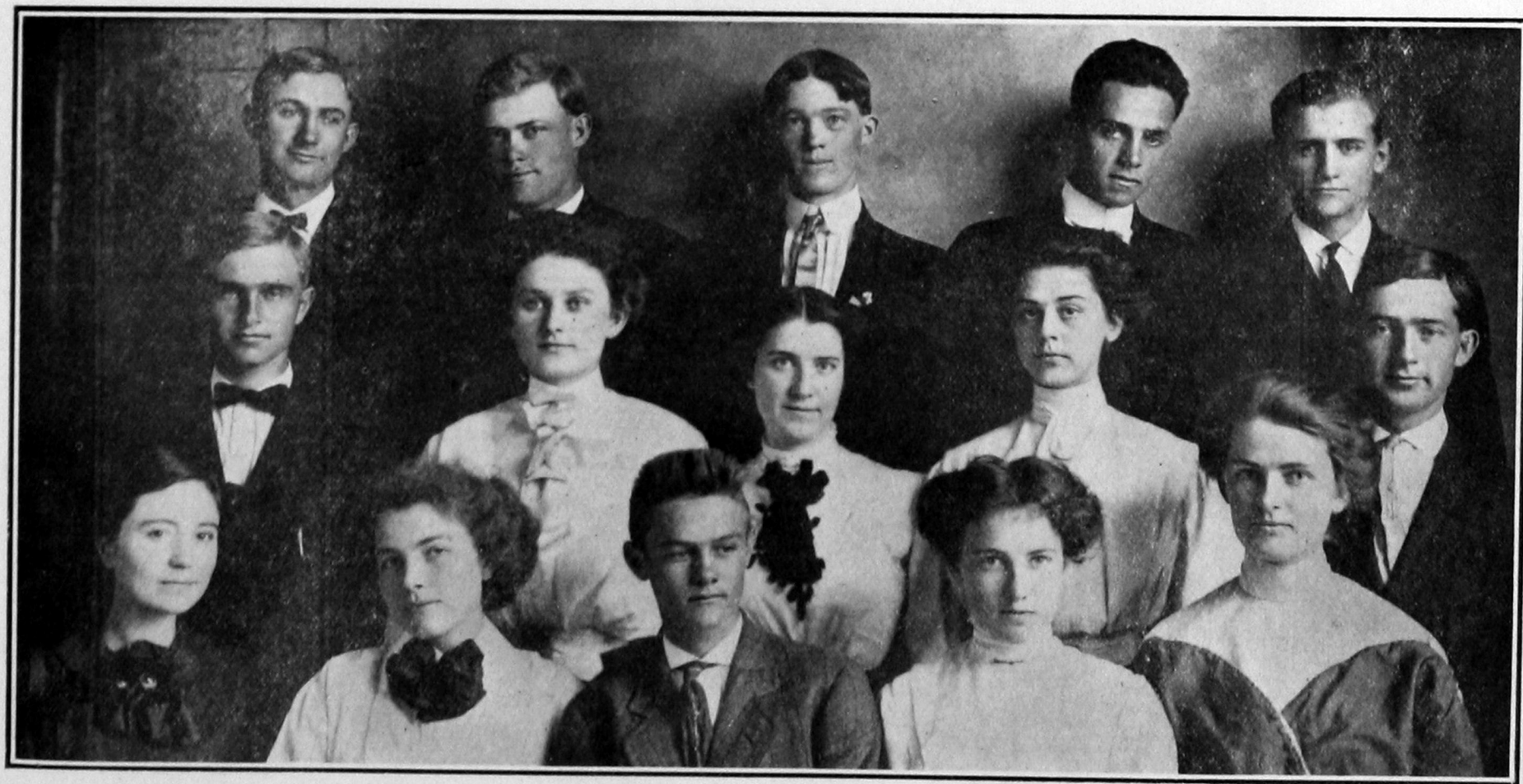
JAMES BRYAN, Sargeant-at-Arms

Class Advisor, PROF. T. A. GROSS

Class Colors: Orange and Black

Motto: "Do What We Do"





# Sophomore Class 1913

## Officers

RICHARD CLOYD, President

HESTER WILSON, Secretary

NELLIE JARVIS, Treasurer

Class Advisor, PROF. E. P. DOWNING

Class Colors: Cream and Brown

Motto: "Facimus"

Flower: Sunflower





# **Freshman Class 1914**

## **Officers**

BERT MEACHAM, President

WAYNE CHRISTIAN, Vice-President

MABEL REICHMANN, Secretary and Treasurer

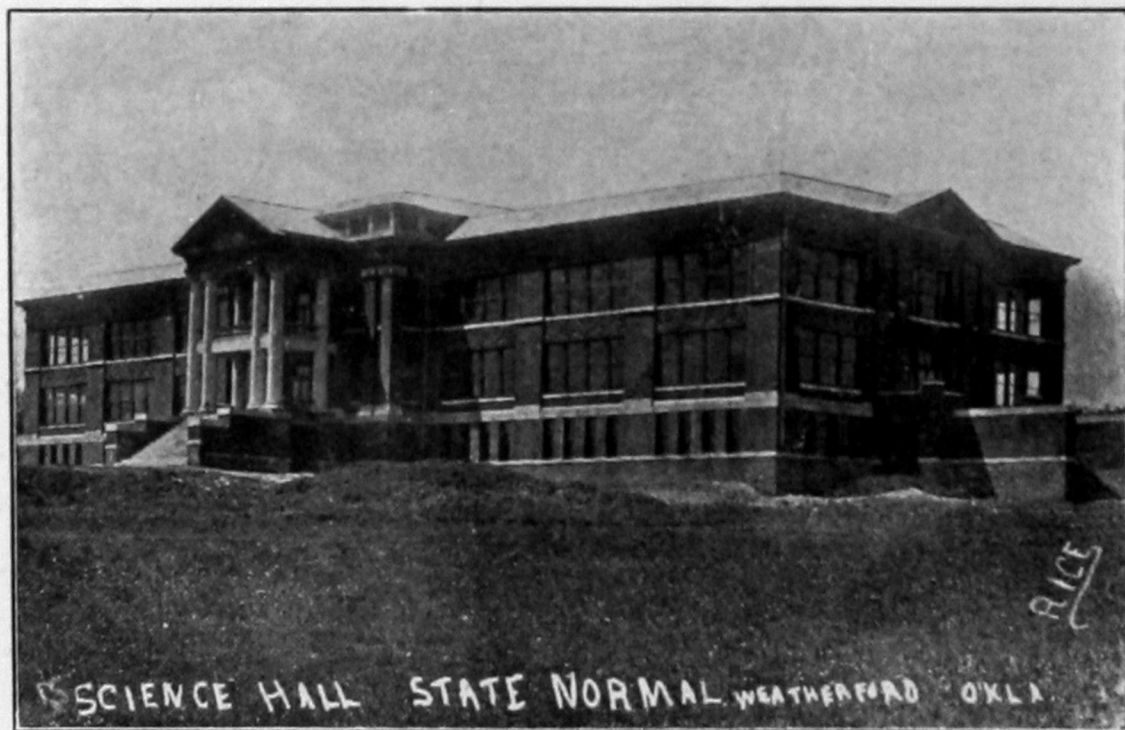
Class Advisor, PROF. R. L. CLAYTON

Class Colors: Green and Gold

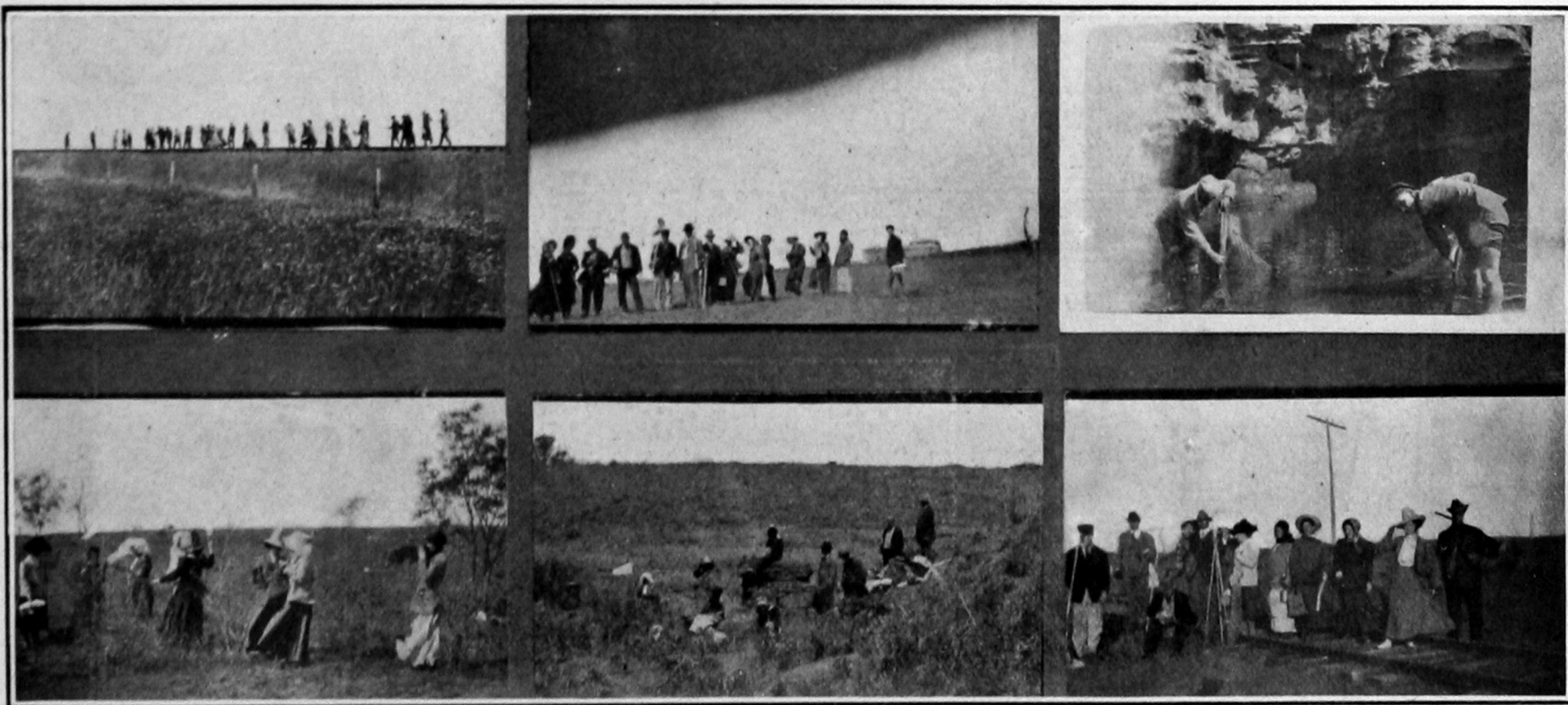
Motto: "El Trabajoes el Precio de la Fortune"











# Commencement

## Class Day Exercises

Wednesday, June Seventh

### Program

From 7:45 to 8:15 Concert by Normal Orchestra

Invocation . . . . . Rev. F. E. Gordon

Salutatory . . . . . Eldon M. Findley

Piano Solo—Scherzo, Op. 31 . . . . . Chopin  
Miss Era Wells

Class History . . . . . Clara R. Thompson

Prophecy . . . . . Alpha Omega McCall

Piano Solo—Rondo Capriccioso . . . . . Mendelssohn  
Miss Grace Norris

Valedictory . . . . . Etta Fisher

Benediction . . . . . J. C. Eubank





# DEBATE *and* ORATORY

# Senate Debating Society

## Officers

WILL CANAVAN, President

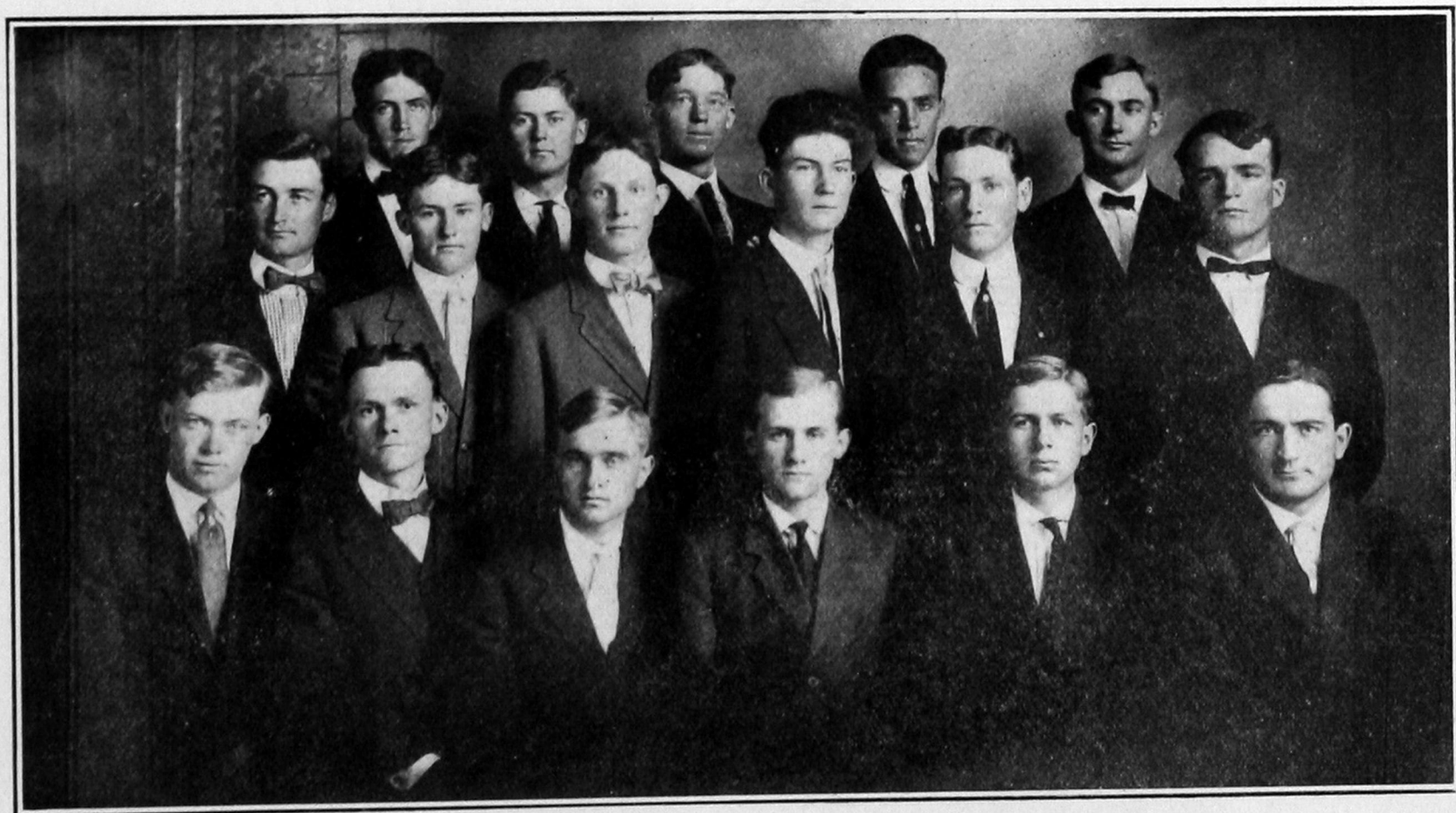
ARTHUR BURKS, Vice-President

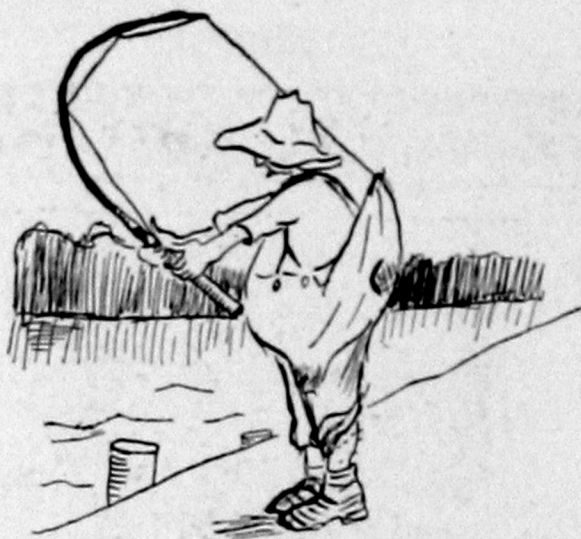
DICK CLOYD, Secretary

ARTHUR REMUND, Treasurer

RIVERS RANDLE, Sargeant-at-Arms







ALVA could not see the point

Resolved— "That the educational interests of Oklahoma would be better served by the early sale of all school lands and the investment of the proceeds in securities than by state ownership."

### Team of 1910

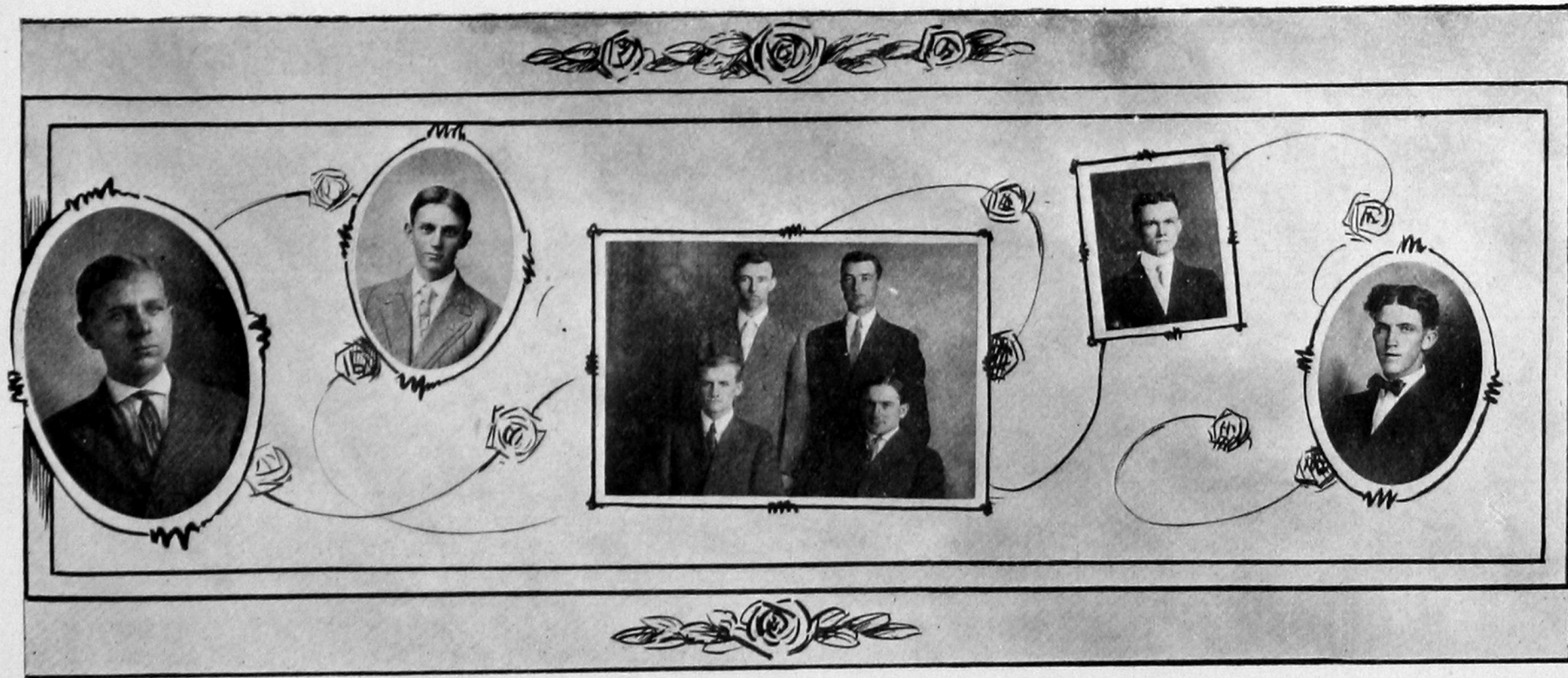
#### AFFIRMATIVE

LaRue  
Remund  
W. Canavan

#### NEGATIVE

J. Webster  
C. Otto  
R. Randle





# House of Representatives

## Officers

LEONARD FINCH, President

FLOYD GORE, Secretary

JOHN CARROL, Sargent-at-Arms

LAWRENCE MEACHAM, Attorney

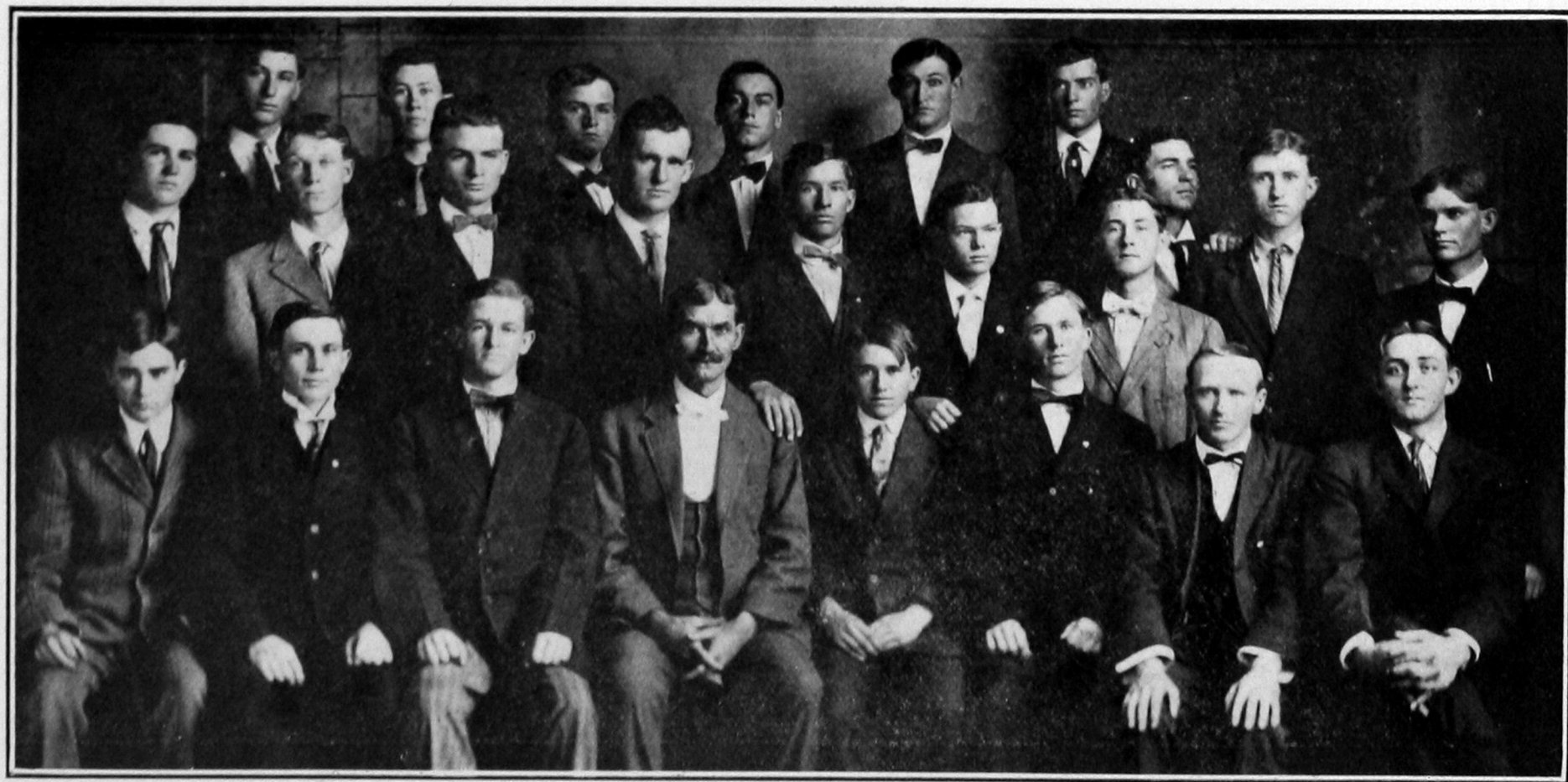
MAJOR REYNOLDS, Vice-President

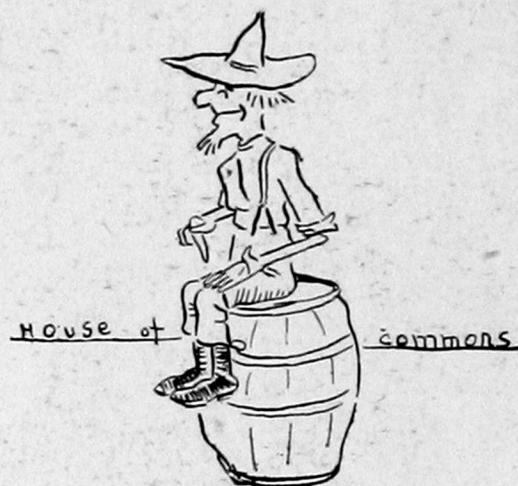
ALLEN KELLOG, Treasurer

BAILEY WHITTENBERG, Critic

J. C. DEAN, Parlimentarian







## House of Commons

### Officers

A. M. LOWRY, President

ALBERT COFFEE, Vice-President

WM. RAYFIELD, Secretary

THEODORE THACKER, Treasurer

PROF. CLAYTON, Critic

ERNEST REID, Sargeant-at-Arms





# **Gamma Delta Kappa**

## **Officers**

**MABEL REICHMANN, President**

**JUANITA JAMES, Vice-President**

**JOY OTTO, Secretary**

**AGNES PARTRIDGE, Treasurer**

**MISS OWEN, Matron**

**EUGENIA BAIRD, Sargeant-at-Arms**

**PROF. DOWNING, Parlimentarian**







## Sigma Lambda Sigma

### Officers

HELEN CLAYPOOL, President

GERTIE WEBB, Vice-President

RUTH CLAYPOOL, Secretary

WANDA WHITSON, Treasurer

PROF. BREWER, Parliamentarian





# Oratorical Association

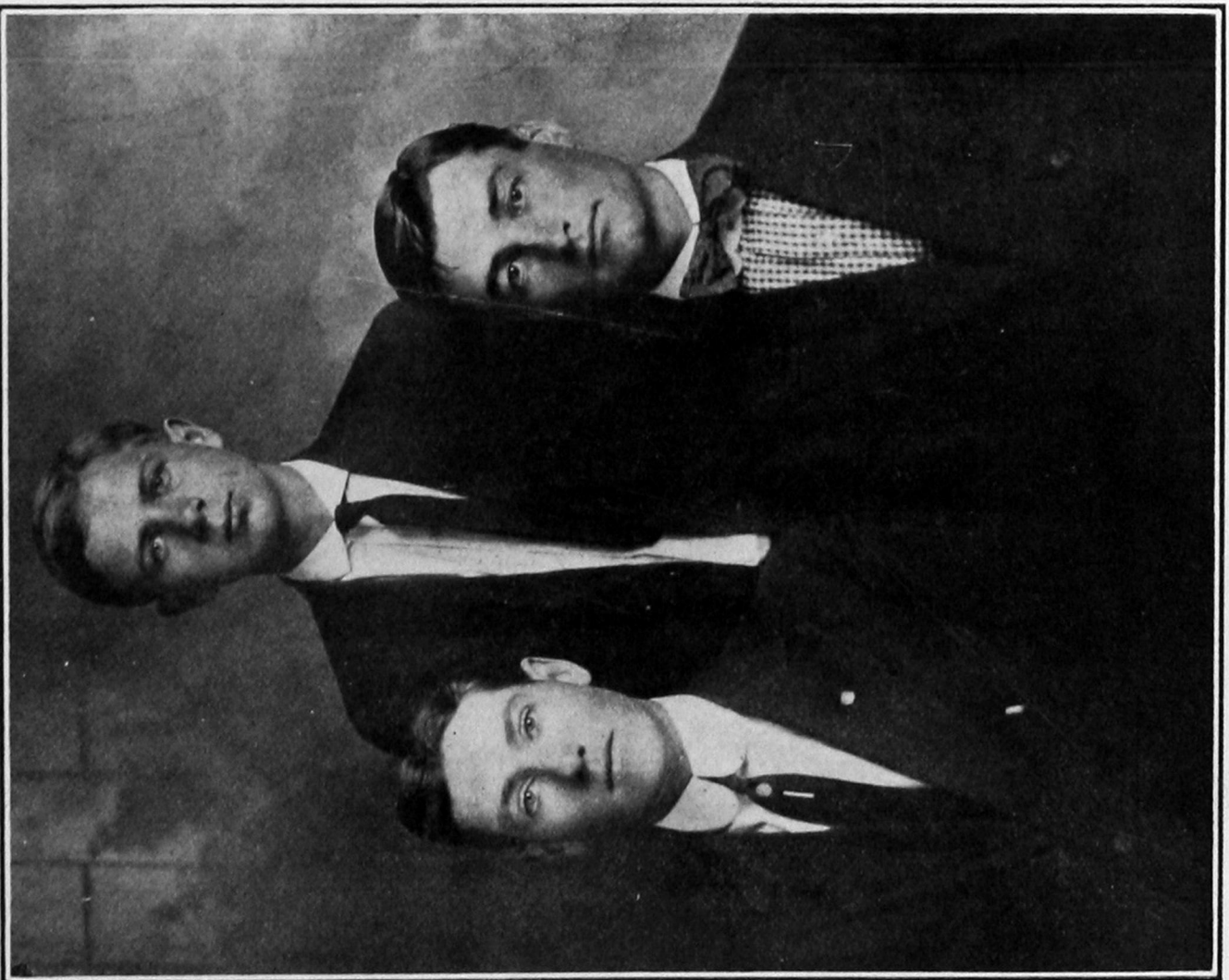
## Officers

JOHN WEBSTER, President

WILL CANAVAN, Secretary

RICHARD CLOYD, Treasurer



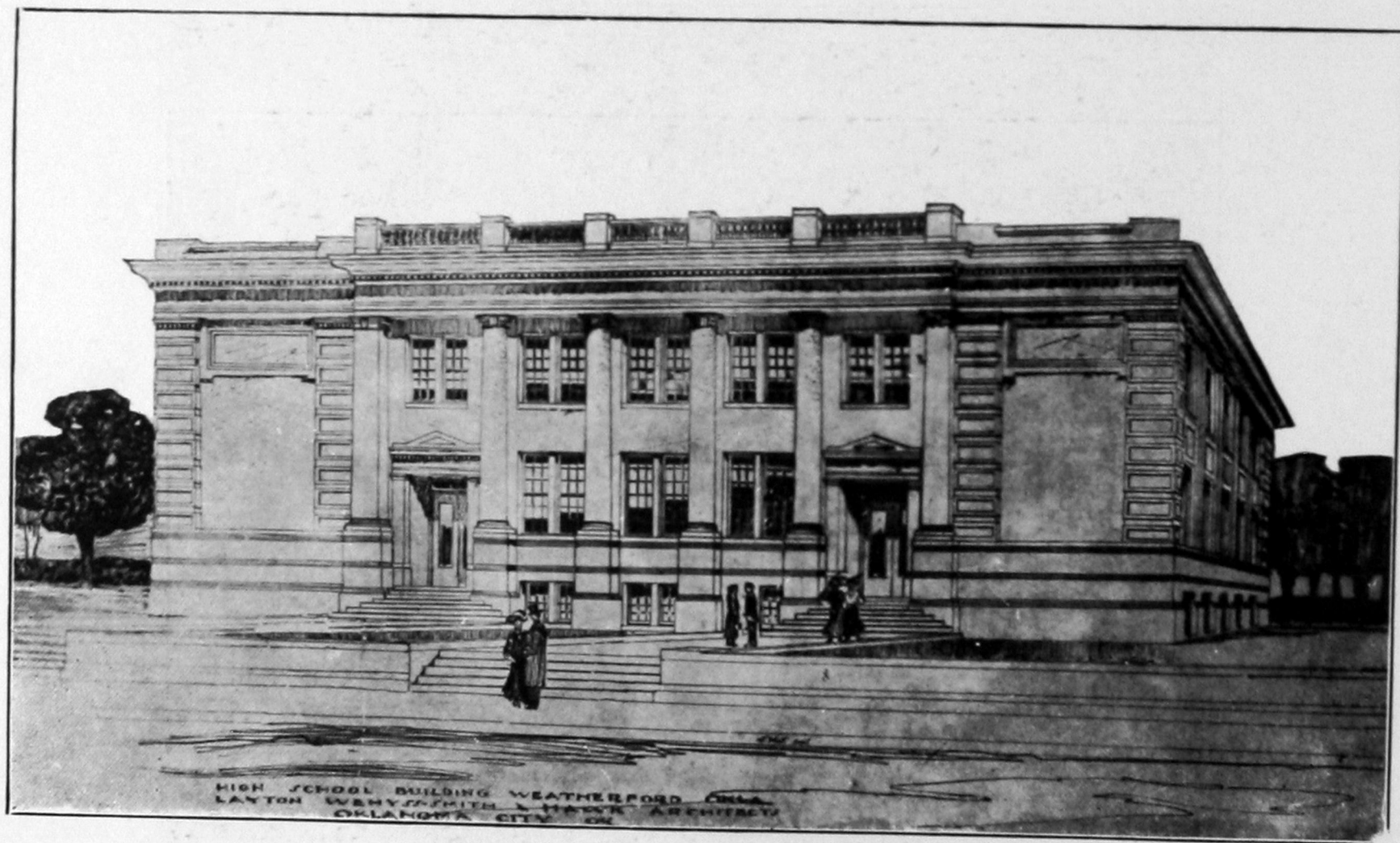


## Program

Orchestra (A) March "The Thoroughbred"	Herne
(C) "Humoresque," "A Game of Tag"	Ball
Perseverance, the Stepping Stone to Success	Helen Claypool
Character Building	Emma Jay Lester
Piano Duet, Military March	Schubert
Esther Reed and Hester Wilson	
Problems of the Age	Mabel Reichmann
The Rising Triumph of the South	Jesse Jackson
Piano, Valse Caprice	Newland
Carrie Marshall Mayer	
Delivery of Medals	



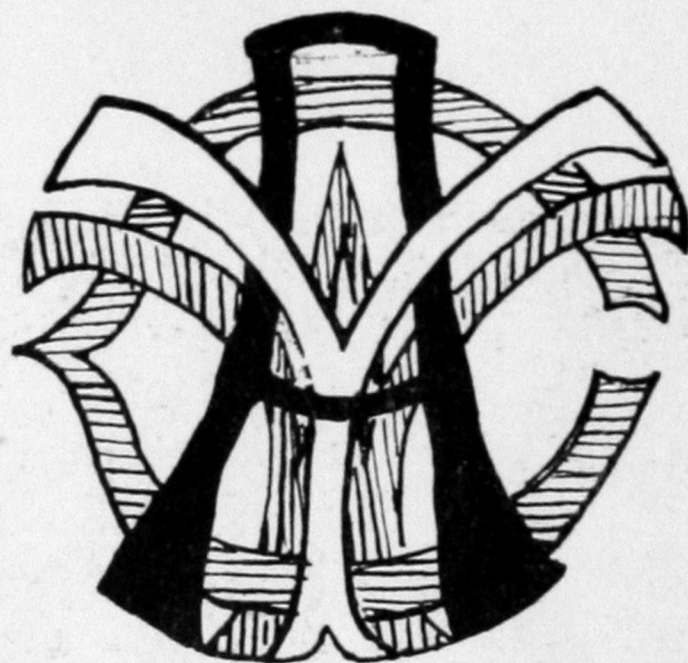




HIGH SCHOOL BUILDING WEATHERFORD OKLA  
LAYTON WENYUSZMITH & HAYEK ARCHITECTS  
OKLAHOMA CITY OK







## Young Womens Christian Association

### Cabinet

EUGENIA BAIRD, President

ANNA WANSLEY, Secretary

BEULAH HARROUF, Corresponding Secretary

MABEL REICHMANN, Chairman Social Committee

LAURA MAPLES, Vice-president

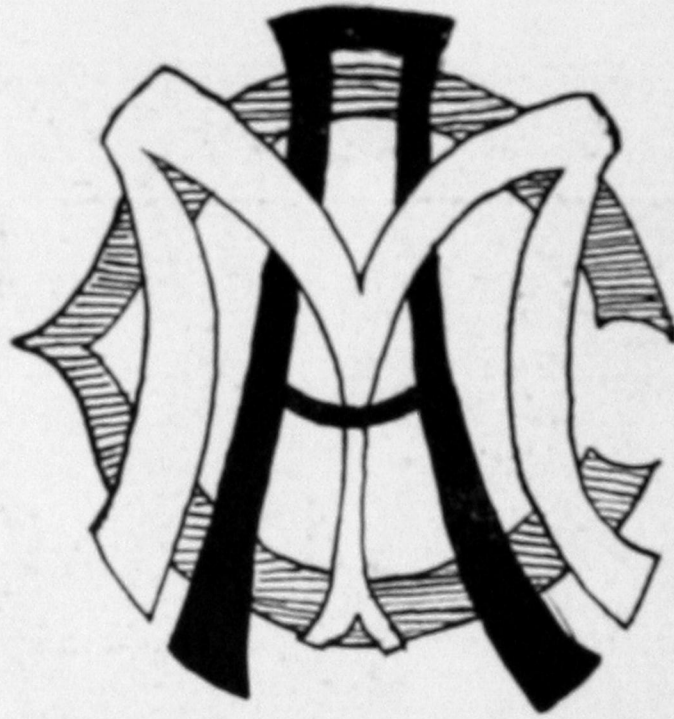
STARR OTTO, Treasurer

ESTHER REED, Chairman Devotional Committee

MRS. W. A. GARDNER, Advisor







## Young Mens Christian Association

### Cabinet

ALLEN KILLOUGH, President

FRED GORE, Vice-President

FLOY GORE, Secretary

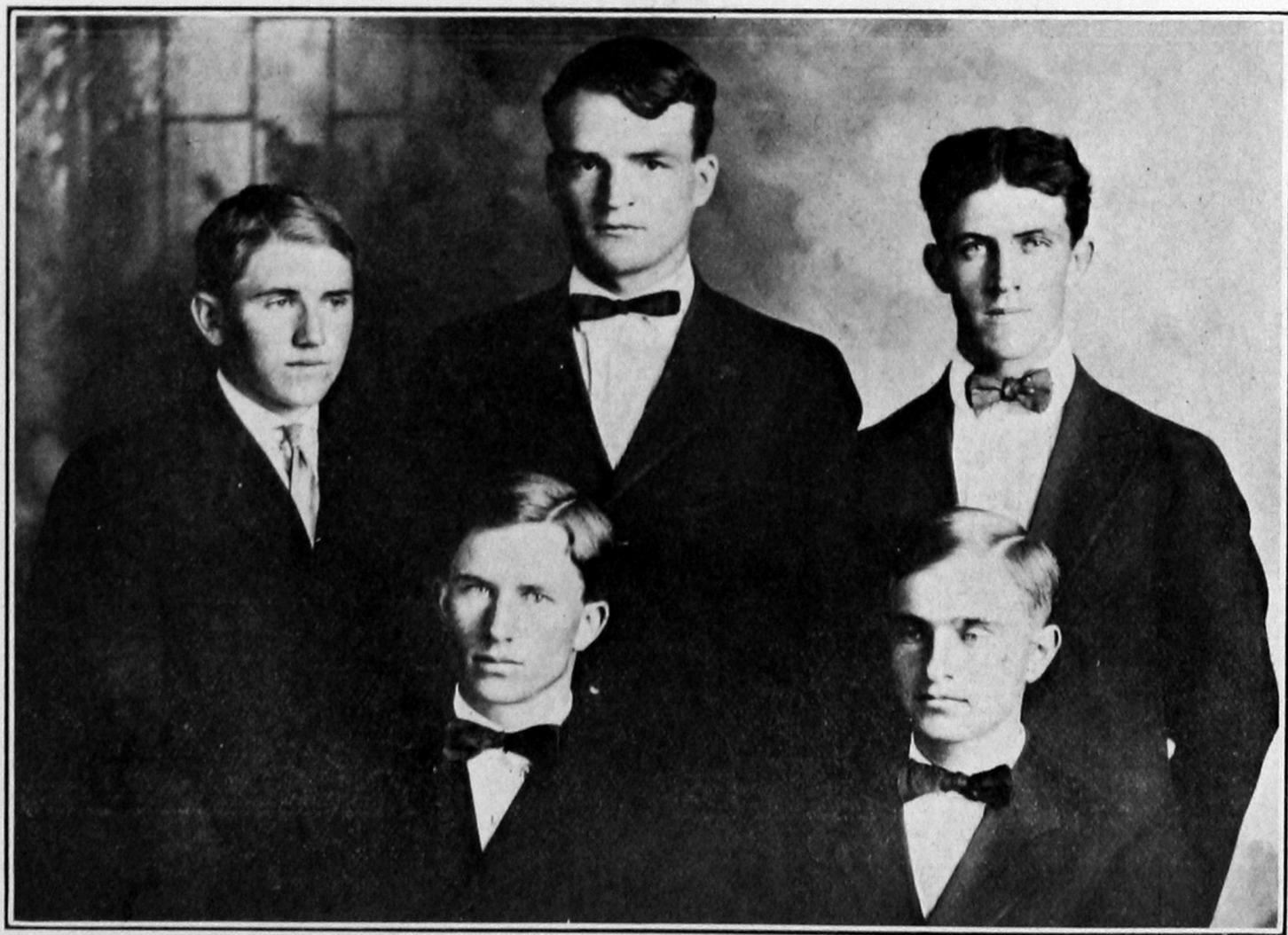
CLIFF OTTO, Treasurer

RIVERS RANDLE, Chairman Bible Study Committee

FRED LARUE, Chairman Social Committee

EGBERT MEACHAM, Chairman Reception Committee





# **Domestic Science Club**

## **Officers**

ETTA FISHER, President

LYNDA SHAW, Secretary

MISS DAVIS, Treasurer





## Orchestra

Director, J. W. BREMER

First Violin—D. G. Guthrie  
—Howard Reed  
—Lucile Dailey

Second Violin—Joe Lackey  
—Lucile Snyder  
—Alice Reed  
—C. L. Nikkel

Cornets—Ivan Snyder  
—Ewing Lawter

Clarinet—Fay Snider

Horn—John Lackey

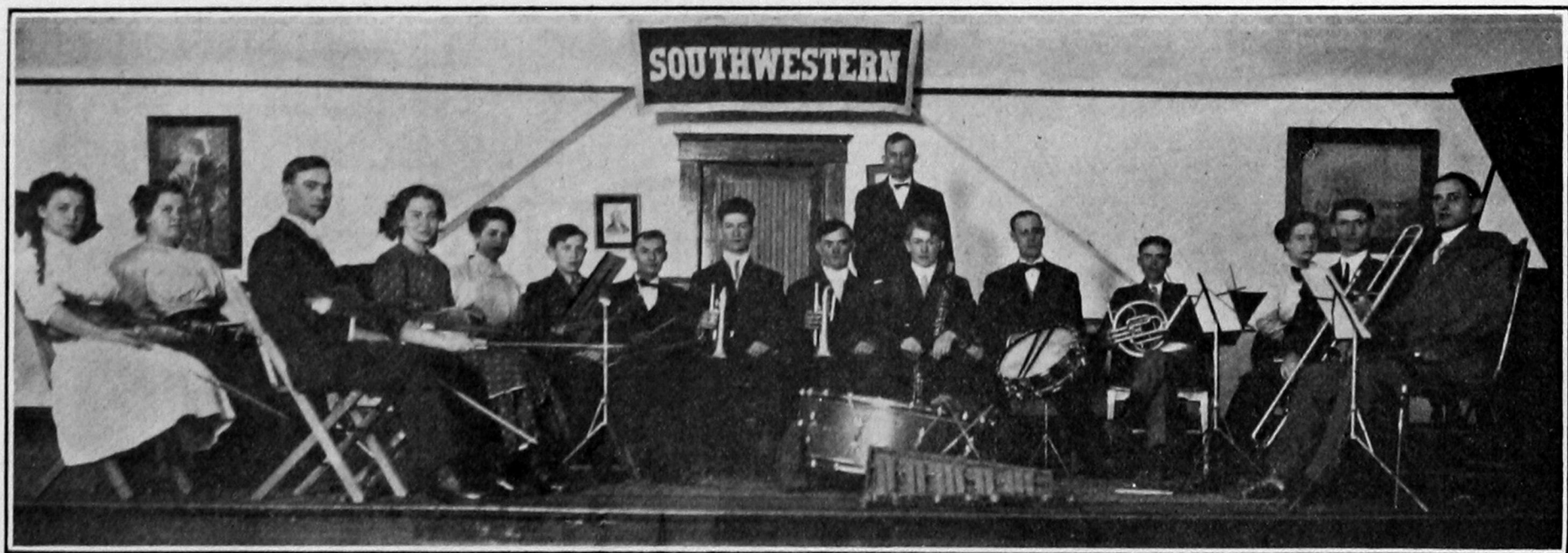
Trombone—Nova Alkire

Flute—Paul Shaub

Drum—Harold Trout

Piano—Carrie Marshall Mayer







## Boys Glee Club

JOHN W. BREMER, Director

### TENORS

C. L. Nikkel  
James E. Penny  
Frank Cartwright  
Wayne Christian  
Richard Cloyd  
Aubert Wilson  
John Lackey  
Timothy Schies  
Clinton Davis  
Robert Trent

### BASSES

Allen Killough  
Frank Drake  
Ivan Snider  
Rivers Randle  
Bert Meacham  
Frank Thacker  
John Bollenbach  
Albert Bollenbach







## Girls Glee Club

Director, J. W. BREMER

### SOPRANOS

Carrie Marshall Mayer

Johnie James

Lucile Snider

Lynne Lee Loe

Ora Sheets

Leona Hadley

Esther Reed

Perry Lou Stark

Tillie Sherman

### ALTOS

Georgia Cloyd

Nellie Goodner

Mrs. Bremer

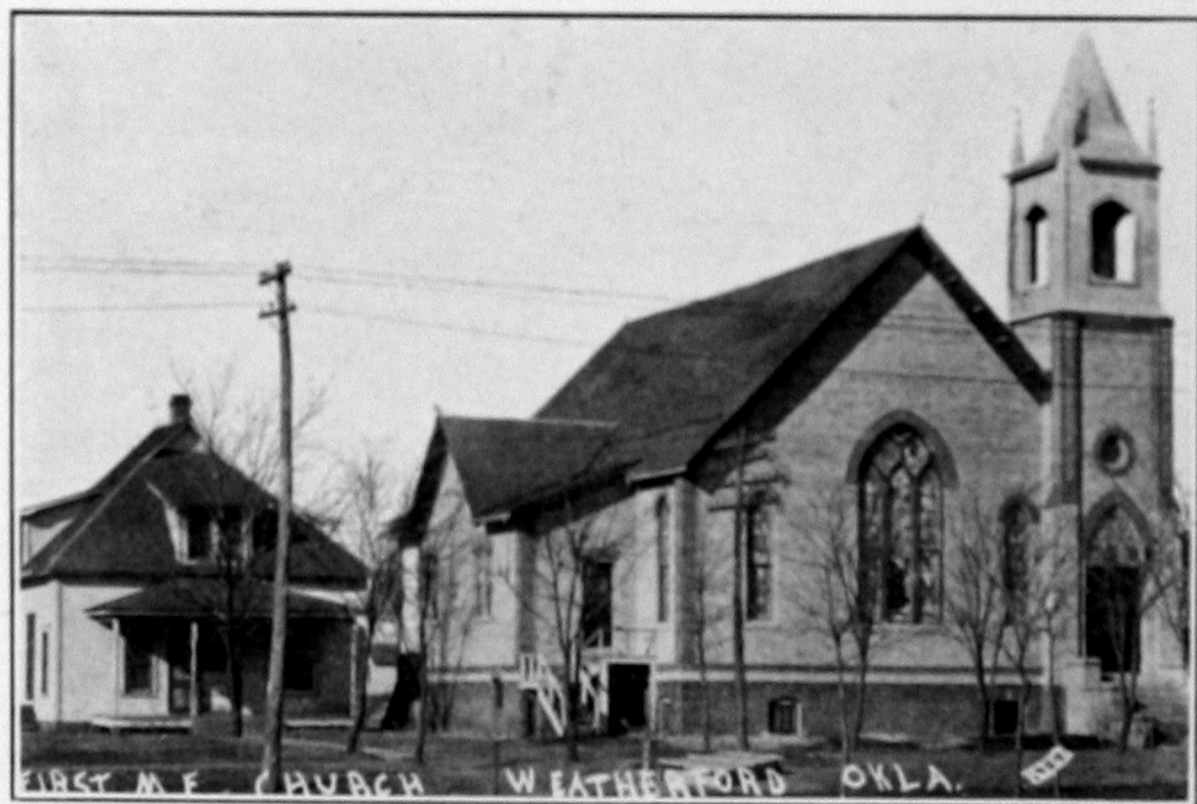
Miller Coker

Grace Norris

Era Wells







FIRST M. E. CHURCH WEATHERFORD OKLA.





ATHLETICS

## **S. M. N. Foot Ball Team**

Coach, GASKELL

Captains, BRYAN AND HOCKER

Guards

Jordan  
L. Meacham

Centers

Warren  
Shirey

Tackles

Vincent  
B. Meacham

Ends

Baker  
Christian  
Borgmann

Right Half Back

LaRue  
Quillian

Full Back

Wallace

Quarter Back

Bryan

Left Half Back

Hocker





## Girls Basket Ball Team

Coach, PATTERSON

Captains, GERTRUDE SCHAEFER AND NELLE CLARK

Matron, MRS. DUNSTAN

Forwards

G. Schaefer  
B. Cloud  
B. Roland

Center

N. Clark  
R. Claypool

Guards

P. Steele  
M. Morrison





## S. M. N. Baseball Team

Coach, GASKELL

Captain R. KERR

Catchers, L. Wallace  
R. Rhodes

Pitchers, R. Allen  
R. Kerr

First Base, V. Love

Left Field, A. Burks

Second Base, R. Randle

Center Field, Kerr

Third Base, J. Bryan

Jim Bryan

Short Stop, J. Rogers

Right Field, Rhodes

Wallace



