



2-3-2016

Volume 107 Issue 14

Southwestern Oklahoma State University

Follow this and additional works at: https://dc.swosu.edu/the_southwestern

Recommended Citation

Southwestern Oklahoma State University, "Volume 107 Issue 14" (2016). *The Southwestern*. 12.
https://dc.swosu.edu/the_southwestern/12

This Book is brought to you for free and open access by the Newspapers at SWOSU Digital Commons. It has been accepted for inclusion in The Southwestern by an authorized administrator of SWOSU Digital Commons. An ADA compliant document is available upon request. For more information, please contact phillip.fitzsimmons@swosu.edu.



The Southwestern 707501
100 Campus Drive
Weatherford, OK 73096
RETURN SERVICE REQUESTED

Nonprofit Organization
U.S. POSTAGE PAID
Weatherford, OK 73096
Permit No. 57

The Southwestern

Southwestern Oklahoma State University's Student Publication

Volume 107 Issue 14 • February 3, 2016

Review



DOWNTOWN DINER
--page 4

Men's Basketball



GAME THURSDAY
--page 5

Women's Basketball



BUZZER BEATER!
--page 5

Top events coming up at SWOSU

- **SWOSU basketball** — Thursday, Feb. 4, against Arkansas-Monticello in the Pioneer Cellular Event Center. Women's game starts at 5:30, men's game starts at 7:30.
- **Second City** — Second City comedy troupe comes to SWOSU as part of the Panorama series. Monday, Feb. 8, at 7:30 p.m. in the Fine Arts Center.

WEEKLY WEATHER

SOURCE: WEATHER.COM		
WED	THUR	FRI
61/35	45/26	42/26
SAT	SUN	MON
42/28	46/30	46/29

SWOSU Snapshots

Hoop action is in full swing at the Pioneer Cellular Event Center. The men's and women's basketball teams are in the heart of the spring schedule and will play again at home on Thursday against Arkansas-Monticello. (Photos by Rilee Roberson)

Student numbers jump up again

By Jennifer Steiner
Staff Reporter

Southwestern's enrollment jumped again this spring, continuing a two-year upward trend in student numbers.

In comparison to spring 2015, SWOSU had an increase of 5.5 percent toward enrollment headcount. The number of students in 2016 is 4,828, compared to 4,614 in 2015. The Weatherford/Sayre campuses also had a 4.0 percent increase toward credit hours. There are 4,118 full-time equivalent students (FTE credit hour count), compared to 3,957 FTE in spring 2015.

Registrar Shamus Moore said the the increase in enrollment helps offset budget cuts due to Oklahoma's budget shortfall.

There are several different factors that play into the increase or decrease in enrollment headcounts. According to Moore, some of those factors have to do with the economy, as well as the price of oil. Another factor is when there are more jobs offered, enrollment numbers are lower. However, when the economy suffers due to a recent decrease in the price of oil, SWOSU will see higher enrollment numbers.

Shamus said that Southwestern had one of its largest enrollment years around 2006 when enrollment was at 4,939 students for the spring semester.

Enrollment for summer and fall classes begins on Feb. 8.

Here to help
Second City offers advice
in time for Valentine's Day

By MaKenli Ladd
Staff Reporter

Southwestern is celebrating its 25th year of panorama, and to celebrate they are bringing back some of the favorite acts throughout the years.

Two events are right around the corner. The Second City comedic troupe will be coming Feb. 8 and the Peking Acrobats will perform on March 1. Both of these events will begin at 7:30 p.m. in the Fine Arts Center.

The Second City is a comedic troupe out of Chicago and is where many famous comedians such as Steve Carell, Chris Farley and Tina Fey got their start as comedians. The Second City will put on a special Valentine's Day themed skit about romance and the crazy things done for love.

"The students that attended (Second City) last year when they were here really enjoyed it. It is relatable to everyone and hilarious" said Director of Public Information Brian Adler, who serves on the board for Panorama.

The next Panorama event is a daring performance by the Peking Acrobats. This acrobatic team will perform stunts and showcase their amazing athletic ability



Duke's Diner gets high rating from Health Department

By Maggie Tran
News Editor

The Student Union cafeteria recently received a high rating from the Health Department.

Twice a year, agencies from the Health Department come to the SWOSU cafeteria to run tests. They check the cleanliness of the area and make sure that the food is prepared and cooked properly in accordance with the requirements of the hygiene and health codes.

"I am proud to say we are having good reports with no issues and compliments from the Health Department," said Dirk Bouma, manager of the cafeteria.

The food served at Duke's Diner is based on a four-week menu cycle, which is approved by the director of the Student Union. Each menu is cal-

culated to balance the nutrients. Most of the main dishes are homemade, and the vegetables and fresh fruits change every day.

"We always strive to provide students healthy meals with fresh and nutritious food," Bouma said.

In the near future, the cafeteria will offer a website with the online menu updated daily. Bouma said he also wants to focus more on healthy items and have a menu that could count the number of calories when students pick the food.

Every day the cafeteria serves around 500 students, and this number has increased in recent years.

They also have four special dinners each year for big holidays.

The cafeteria will have a special Valentine's Day Banquet on Thursday, Feb. 5, from 4:30-6:30pm. This event is a part of the Holiday Banquet Series of Duke's Diner. Students who have meal plans can use their ID Card, or diners can pay \$10.

"We try to make everybody happy," said Diana Lawrence, assistant manager of the cafeteria. "We always try our best to bring students good quality and nutritious meals. This annual banquet is a special event that brings great experiences not only for students but also for all employees of Duke's Diner."

DUKE'S DINER
VALENTINES BANQUET
THURSDAY, FEB. 5
4:30-6:30 P.M.

NEWS

SHINE Scholarship Fund seeks to help students

Amidst a tightening state budget and difficult economic circumstances, alumni and friends of Southwestern Oklahoma State University now have an immediate opportunity to help SWOSU students continue investing in their education.

The SWOSU Foundation has established the SHINE Scholarship Fund to provide immediate scholarship relief and assistance to SWOSU students. Garrett King, executive director of the SWOSU Foundation, said 100% of gifts to the SHINE Fund will go to increase the giving capacity of 205 existing scholarship funds and to establish new scholarship funds where needed.

“For nearly four decades the SWOSU Foundation has joined the generosity of Southwestern’s friends and alumni with the best aspirations of our students,” King said. “The SHINE

Scholarships Fund will immediately direct all gifts to provide much-needed scholarship support and relief to SWOSU students. It is our sincere hope that this will help struggling families at this time of financial strain.”

King said gifts of any size are greatly appreciated and noted. To contribute to the SWOSU Foundation SHINE Scholarship Fund please visit www.GivetoSWOSU.com or call the SWOSU Foundation at 580-774-3267.

The SWOSU Foundation was established in 1977 to promote philanthropy and distribute funds to support the activities and programs of SWOSU. Located on the Weatherford campus in the historic Burton House, the Foundation currently stewards over \$20 million in assets for the benefit of SWOSU. For more information please visit www.SWOSUFoundation.com.



Officers of the Student Government Association for the Spring 2016 semester.

Student Government Association starts spring 2016 meetings

By Caylie Patton
Staff Reporter

The Student Government Association has begun their Spring 2016 session. The SGA is the governing body for the SWOSU student body and meets every Thursday at 6 p.m. in Stafford 104. Elections are held every fall but seats are often refilled in the spring due to changing schedules.

This semester, the SGA will pass legislation to be used while speaking with state legislators during Higher Education Day.

The event occurs every year at the capitol and will be held on Feb. 16 this year. Members of the Student Government, along with SWOSU President Randy Beutler, will meet with state governing officials to discuss budget cuts to higher

education, as well as other campus issues.

“This is my last semester at SWOSU so I am really excited for the spring semester. I think we have some really exciting legislation that will be coming to the floor and some great events for students, faculty, and the city of Weatherford,” said Student Body President Austin Cantrell.

SGA is also gearing up for a few spring student activities such as Kid’s Night, Relay for Life, and SWOSU Palooza. Kid’s Night will be held April 1 from 5 to 11 p.m. and proceeds will go towards Relay for Life, which will be in the Wellness Center on April 15. SWOSUPalooza is SWOSU’s annual concert that will be held Tuesday April 19 with the time and headliner to be released at a later date. It is a \$5 suggested donation to Bulldog Angels to get into the concert.

Second from page 1

with gymnastic and balancing skills.

Tickets for both events can be purchased online at stubwire.com or in the Public Relations and Marketing office in 205 of the Administration building.

Tickets for The Second City Performance are on sale and are \$5 for student, faculty/staff and emeriti; \$10 for

the general public; and \$20 for tickets purchased at the door. Tickets for the Peking Acrobats can be purchased starting Feb. 1. Advance tickets are \$10 for SWOSU students, faculty/staff and emeriti; \$15 for the general public; \$20 for premium seats; and \$25 for all tickets purchased at the door.

LinkedIn can be useful for students

By Amber Bachiochi
Staff Reporter

As the list of social networking sites continues to grow, there is one in particular that has potential to serve college students better than any other. LinkedIn is a unique platform that allows users to network with those in their desired career fields and connect to new opportunities. One unique characteristic of LinkedIn is that it is in part a working resume.

SWOSU’s Career Services Coordinator Savannah Schones believes that networking is an underutilized aspect of job searching and professional development, and that LinkedIn can be a very beneficial tool for this.

“LinkedIn is a fantastic social networking site for students wishing to make some connections with business leaders in varying industries,” she said. “Students who have a professional profile and are actively trying to engage in professional networking will see the reward ten-fold when it comes to internship and job placement.”

A profile checklist for college students can be found

on LinkedIn’s website. Besides filling out the typical education, organizational involvement, and past work experience fields, LinkedIn also encourages users to be clear about what is important to them. For example, the “headline” section reads, “Tell people what you’re excited about now and the cool things you want to do in the future” while the “summary” section asks users to, “Describe what motivates you, what you’re skilled at, and what’s next.”

On this same note, Schones implies that finding the right fit for an internship or employment opportunity takes more than simply knowing certain people. She concluded that professionalism is still a key feature on and offline when networking.

“You need a strong resume, good interpersonal skills, professional dress, and what many people forget is that you need to do your research. Doing your research and walking into an interview or networking opportunity with company knowledge will make a huge amount of difference.”



The Southwestern Spring 2016

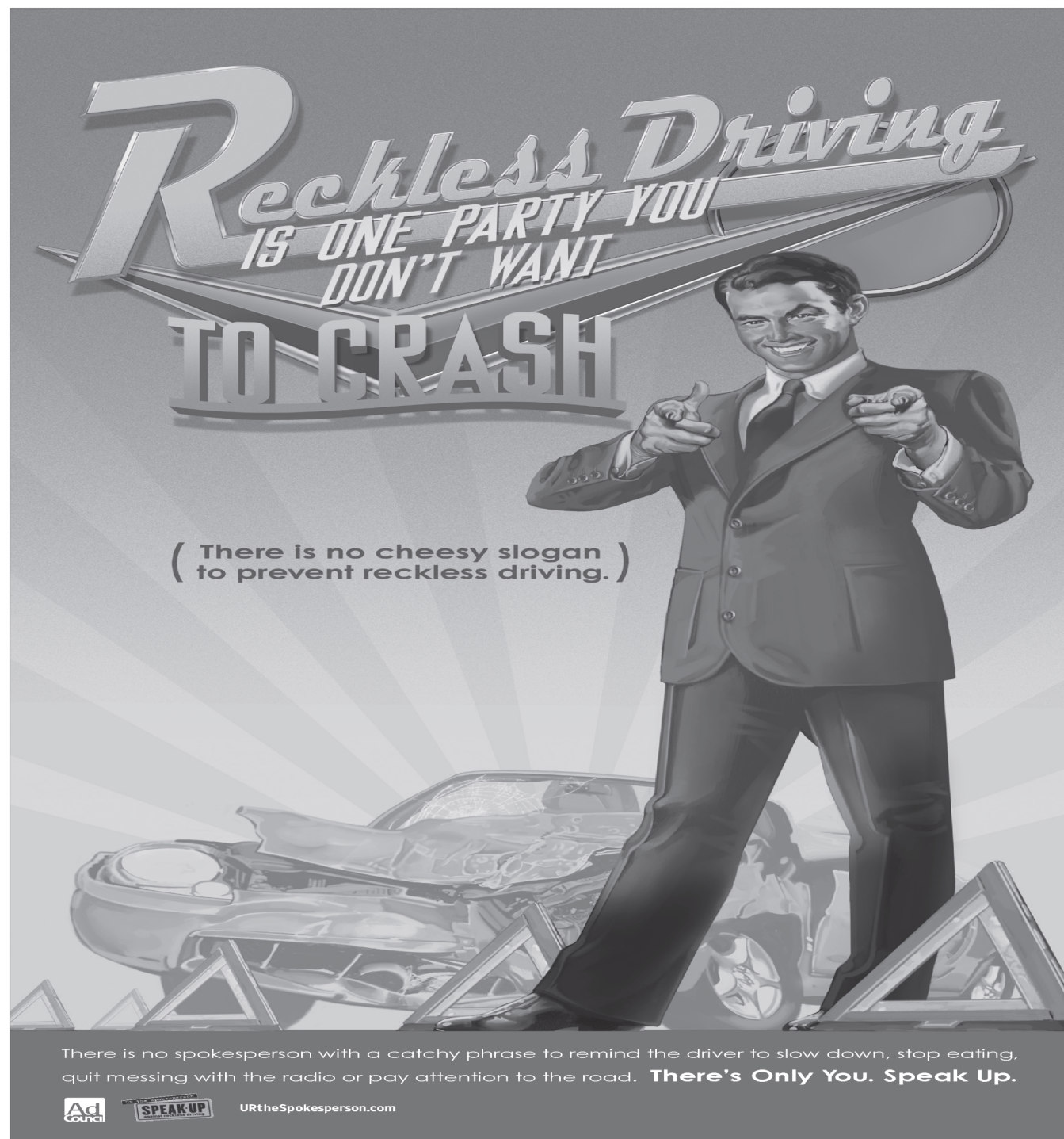
News Editor.....Maggie Tran
Online Editor Raven White
Features Editor..... Hannah Flaherty
Publications ManagerLaura Howe
Advertising Manager..... Kierra Prewitt
Photographers..... Riley Roberson,
..... Maggie Tran, Nakota Taylor
Staff Reporters.....Amber Bachiochi, Bayli Blanchard
Elizabeth Fuller, Kelsie Gerlach, Brooke Harden,
Bailey Hood, Maxwell Jirak, Conner Kent,
Makenli Ladd, Katie Lafferty, Ayo Ojo, Caylie Patton,
Jennifer Steiner, Michelle Taylor, Andikan Usanga

Editing Staff.....Amber Bachiochi, Baylie Blanchard
Tariq Carey, Hunter Green, Bailey Hood,
Maxwell Jirak, Bailey Kephart, Katie Lafferty,
Delmi Menendez, Ayo Ojo, Saul Pina, Bradley Rowson,
Jennifer Steiner, Jessica Tortorelli, Amber Trogdon

THE SOUTHWESTERN is the student newspaper of Southwestern Oklahoma State University. It is published every Wednesday during the fall and spring semesters, except during holidays and finals week. Students in the editing class serve as section editors, and students in the news gathering and reporting class serve as writers. The editorial board meets every Wednesday at 2:00 p.m. in the journalism lab, Campbell 211.

THE SOUTHWESTERN encourages comments from the student body, faculty, and administration in the form of letters to the editor. All letters must include a name for consideration; however, the name may be withheld upon request. The opinions expressed within signed editorials are the opinions of the writers; the opinions expressed in unsigned, boxed editorials are the opinion of the staff. Neither is necessarily the opinion of the university administration, staff or faculty.

The Southwestern
Southwestern Oklahoma State University
100 Campus Drive
Weatherford, OK 73096
(580) 774-3065
thesouthwestern@swosu.edu



NEWS

Nominations sought for pharmacy awards

The Southwestern Oklahoma State University Pharmacy Alumni Association in Weatherford is accepting nominations by March 10 for various awards.

The awards include Humanitarian Award, Professional Achievement Award and Young Professional Achievement Award.

The Humanitarian Award recognizes a SWOSU pharmacy graduate who has significantly affected lives in a humanitarian way through service to their communities beyond the call of duty. This award also recognizes the individual's dedication to the pharmacy profession and extraordinary humanitarian service to society.

The Professional Achievement Award recognizes out-

standing professional achievement. The award recognizes individuals who have attained prominence in his or her field and also distinguishes the alumni who personify the SWOSU College of Pharmacy's tradition of excellence.

The Young Professional Achievement Award recognizes the outstanding professional achievement in the profession of pharmacy of an individual who has graduated from the SWOSU College of Pharmacy in the last 10 years.

Patti Harper, alumni and development director at SWOSU, said the nomination forms can be found online at: <http://www.southwesternpharmacy.com/nomination-form.htm>

Three students win MLK awards

Three students won cash prizes in a recent essay contest honoring Dr. Martin Luther King, Jr., at Southwestern Oklahoma State University in Weatherford.

Winners included: Ashley Powers, SWOSU, first place and \$100, essay titled "A Dream of Dreams"; Hannah Detweiler, Weatherford High School, second place and \$50, "Martin Luther King Jr. Essay Contest"; and Tosha Williams, SWOSU, third place and \$25, "The Insatiable Dream."

The Collegiate Activities Board (CAB) sponsored the

contest.

"It was a hard process choosing the winners" said coordinator Morgandy Benson. "Everyone did a great job, and we were really proud to see how students in the Weatherford area appreciate Dr. King and his dream."

Participating students were asked to write their essay to answer the given prompt: In what ways has Dr. King's dream of a non-judgmental society been reached? Where do we need to improve on his dream of a better society and what have we fallen short on?

International Students Association provide free Walmart trips

By Andikan Usanga
Staff Reporter

Students who do not have access to transportation can breathe a sigh of relief as the Collegiate Activities Board and the SWOSU International Students Association will continue to provide bi-weekly Walmart trips.

These trips were a regular occurrence during the fall 2015 semester and it was highly successful.

It would take place every first and third Sunday of the month from 2 to 4 p.m. in front of the Bulldog statue by the Student Union building. This would ease the stress of looking for a friend to take one to Walmart for shopping.



Writing center open for spring semester

By Elizabeth Fuller
Staff Reporter

The writing center has officially opened for the spring semester. They will be open from January 25-April 29, excluding spring break. They will be open Sunday through Friday. These times include the following:

Sunday: 4:30-8:30pm
Monday: 9am-7pm

Tuesday 10am-12pm, 1-6pm,
Wednesday 9am-7pm,
Thursday 8am-6pm, and Friday 9am-1pm.

These hours are subject to change. Consultations can be done online, over the phone, or face-to-face. For more information about the writing center, please visit their website. <http://www.swosu.edu/academics/writing-center/online-consult.aspx>

Crossword (courtesy of mirroreyes.com)

ACROSS
1. Type of beer
6. Indian music
10. Tins
14. Drink garnish
15. Twin sister of Ares
16. Biblical garden
17. Aromatic seeds
18. Canvas
19. Exploded star
20. Unappeasable
22. Journey
23. 53 in Roman numerals
24. Chipper
26. Not highs
30. Ribonucleic acid
31. 2,000 pounds
32. Death notice
33. 1/100th of a dollar
35. Follow as a result
39. Fashionable
41. Least difficult
43. Leaky
44. Found on most beaches
46. District
47. Historic period
49. What we sleep on
50. "___ we forget"
51. The first event in a series
54. Ends a prayer
56. Street
57. Permissiveness
63. As well
64. Press
65. Metaphor or hyperbole
66. Place
67. Dispatched
68. Ballet skirts
69. Mats of grass
70. Foot digits
71. It makes dough rise

DOWN
1. Hubs
2. Astringent
3. Hobbling gait
4. Wicked
5. Kidney-related
6. Advanced fees
7. High-spirited horse
8. Lass
9. View
10. 100th anniversary
11. Love intensely
12. Not a single time
13. Serpentine
21. Approximately
25. Garden tools
26. Cuts off
27. Double-reed woodwind
28. Sponge
29. Prodigious
34. Run-down apartment houses
36. Arid
37. Applications
38. French for "State"
40. Stringed instrument
42. Viper
45. Type of shellfish
48. A creative person
51. Not written exams
52. Infantile paralysis
53. Alleviated
55. Dapper
58. Chocolate cookie
59. Not false
60. Greek letter
61. Creative work
62. Where a bird lives

Upcoming Events

Wednesday, February 03, 2016	
All Day	Room and board late fees applied
8:00 AM - 9:00 AM	COP IPPE Meeting
10:00 AM - 3:00 PM	Graduate Record Senior
Portraits	
3:00 PM - 4:00 PM	National Football Signing
Day Press Conference	
6:00 PM - 8:00 PM	Physics Tutoring
Thursday, February 04, 2016	
5:30 PM - 7:30 PM	Women's Basketball vs. University of AR-Monticello
7:30 PM - 9:30 PM	Men's Basketball vs. University of AR-Monticello
8:00 PM - 9:00 PM	SISA Club Meetings
Friday, February 05, 2016	
All Day	Washita Valley Basketball Conference
Tournament	
10:00 AM	Softball @ Southeastern Regional
Invitational	
3:30 PM	Baseball @ West Texas A&M Tournament
5:00 PM	Administrative Drop
Saturday, February 06, 2016	
7:00 AM - 3:00 PM	ACT National Test
8:00 AM - 12:00 PM	Washita Valley Basketball
Conference Tournament	
12:00 PM - 2:00 PM	Women's Basketball vs. Southern Arkansas University
12:30 PM	Baseball @ West Texas A&M Tournament
12:30 PM	Softball @ Southeastern Regional
Invitational	
2:00 PM - 4:00 PM	Men's Basketball vs. Southern Arkansas University
Sunday, February 07, 2016	
10:00 AM	Softball @ Southeastern Regional
Invitational	
2:00 PM - 4:00 PM	Free Trip to Wal-Mart Available
3:30 PM	Baseball @ West Texas A&M Tournament
5:00 PM - 11:00 PM	Phi Delta Theta Weekly Meeting
6:30 PM - 11:00 PM	Sigma Sigma Chi Meeting
8:00 PM - 11:30 PM	Eta Iota Sigma Meeting
Monday, February 08, 2016	
All Day	Enrollment for Summer 2016 and Fall 2016 begins for Juniors, Seniors and Graduate students.
6:00 PM - 8:00 PM	Physics Tutoring
7:30 PM - 9:30 PM	Panorama Event - The Second City
8:00 PM - 11:00 PM	Zeta Phi Meeting
Tuesday, February 09, 2016	
10:00 AM - 5:00 PM	Grace House Open All Day
Tuesday	
11:30 AM - 1:00 PM	FREE Tuesday Lunch
1:00 PM	Baseball @ University of Central OK
5:30 PM - 7:00 PM	Free Dinner at Grace House
8:00 PM - 10:30 PM	Residence Life Spring Movie
Series: Mockingjay Part 2	
Wednesday, February 10, 2016	
9:30 AM - 10:30 AM	SSC Council
6:00 PM - 8:00 PM	Physics Tutoring
Thursday, February 11, 2016	
12:00 PM - 2:00 PM	Sorosis
4:30 PM - 6:30 PM	Duke's Diner Annual Valentine's Day Banquet
5:00 PM	Softball @ Texas A&M-Kingsville
Tournament	
5:30 PM	Women's Basketball at East Central OK
7:00 PM - 8:00 PM	46th Annual SWOSU Jazz Festival Free Concert
7:30 PM - 11:30 PM	#TBT Movie Night
7:30 PM	Men's Basketball at East Central OK

Cuts

Color

Facials

Waxing

Hair Extensions

Eyelash Extensions

Walk-ins Welcome!

1119 E. Davis

580-772-1935

(Rodan Fields consultant)

FEATURES

Movie Review

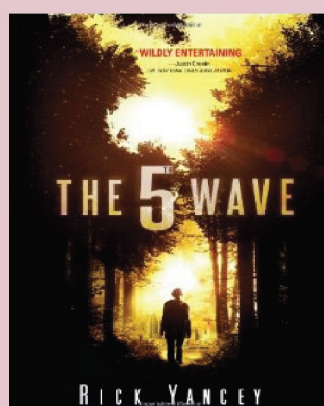
The Fifth Wave

By Bailey Hood
Staff Reporter

The Fifth Wave, based on a book written by Rick Yancey, is about a teenager named Cassie Sullivan who is trying to survive in a post apocalyptic world when out of the blue her brother gets taken by the “good guys.”

These so-called good guys turn out to be aliens that start training children for their military forces against the humans. Cassie then has to learn how to fight for herself to save her brother.

This is a great adventure movie that anyone could get into. It has both action and romance and is a great Friday night film.



Restaurant Review

The Downtown Diner

By Conner Kent
Staff Reporter

When the time comes for me to choose a restaurant in Weatherford, it is always a no brainer: The Downtown Diner. The Diner is a fun place to eat great food, experience the small town atmosphere, and receive excellent service.

The Diner offers an exceptional variety of home-style cooking with popular items such as the Kitty’s Chicken Basket with your choice of regular or jalapeno chicken.

The homemade desserts have many people coming back after they try the delicious cinnamon rolls, ice box pies, and daily special desserts.

The best part for college students is that they offer excellent prices.

Many people, including myself, choose the Diner

simply for its small town atmosphere. The waiters are always friendly and strive to provide good customer service.

Another special quality is that each table or booth has a set of cards to play a favorite card game with friends or family while waiting on the meal.

Every time I have eaten at the Diner, the service has been excellent.

They always make sure to keep drinks refilled and bring the food out as quickly as they can.

Occasionally, the wait time for my food has been a little slow; however, it was simply because they were extra busy on that specific evening.

The hours for the Downtown Diner are Tue.-Wed. 6:00 A.M. to 2:00 P.M., Thu.-Fri. 6:00 A.M. to 8:00 P.M., Sat. 6:00 A.M. to 2:00 P.M., and closed Sun. -Mon. It is located on W Main Str. near the intersection of W Main Str. and N Broadway.

Oscar picks raise debate

By Katie Lafferty
Staff Reporter

The Oscars are right around the corner, and the hashtag #OscarsSoWhite has spread throughout social media, becoming a trademark for the 88th annual Academy Awards.

Many are upset because this is the second year in a row that no person of color was nominated for the four top categories. As a result, boycott has formed. Jada Pinkett Smith and Spike Lee announced that they will join in the boycott on Martin Luther King Jr.’s birthday. Among them are Snoop Dogg, Will Smith, and Michael Moore.

As soon as the nominees were announced, host Chris Rock got together with his team to write a whole new show. Chris has been private with his opinion about the boycott. He did say that the Oscars are primarily white while you expect the NBA players to be black. No one knows if he is going to mention the boycott at the show but the Academy of Motion Pictures and Art Sciences have already announced some changes to look forward to in the future.

The group has promised to double the membership of women and other minorities by 2020. They are also widening the net to be accepted by relaxing the qualifications. These changes include that you only have had to work in the industry in the last 10 years or be nominated in the last 10 years to vote.

Even though there is a lack of diversity for the top award categories this year, there are still great nominees.

The nominees for Actor in a Leading Role include Bryan Cranston in *Trumbo*, Matt Damon in *The Martian*, Leonardo DiCaprio in *The Revenant*, and Michael Fassbender in *Steve Jobs*. Actress in a Leading Role nominees include Cate Blanchett in *Carol*, Brie Larson in *Room*, Jennifer Lawrence in *Joy*, Charlotte Rampling in *45 Years*, and Saoirse Ronan in *Brooklyn*.

Daisy Oropeza, a SWOSU sophomore is excited to see the Oscars. She said she watches them every year with her friends and family. When asked who she wanted to win she said Leonardo DiCaprio because he has never won an Oscar.

Other award categories include Actor/Actress in a supporting role, Animated Feature Film, Cinematography, Costume Design, and Directing. The Oscars are live on ABC on Sunday, Feb 28 at 6 p.m.

The Oscars
are live on ABC
Sunday, Feb
28 at 6 p.m.

Best music application for college students

By Brooke Harden
Staff Reporter

College students need something to get them through homework, tests, and papers. Most students listen to music while getting things done. There are plenty of music apps and sites that can help get students through the stressors of school.

Pandora is a free music website that allows people to listen to music by creating “stations” of their choice.

These stations will play music related to any artist, song, or simply play music within a specific genre.

People are also allowed a number of skips to pass by music they do not like. People with Pandora accounts are allowed to have up to 100 stations of choice music with commercials between every few songs.

All that is needed to get a Pandora account is to go to their website and sign up.

Pandora also has a mobile app that allows listening to music anywhere. If upgraded to Pandora One, there are no more commercials and more skips to pass by the music that a person doesn’t like.

Spotify is another very popular free music website. It must be downloaded on to a computer or cell phone. Similar to Pandora, people can make stations to listen to. Spotify has suggested music stations by what a person is doing, whether it’s studying or working out.

What makes Spotify different from Pandora is that people can search individual songs or albums, but only on the computer.

If upgraded to Spotify Premium people can do the same thing on the mobile app with no commercials and unlimited skips.

When asked which music site she likes the most, student, Dallis Toth said, “I like Pandora better because of the different stations, Spotify is too slow and sometimes wouldn’t work at all.”



Ratcliffe's Textbooks

Serving Oklahoma Since 1925

CLOTHING

BALL CAPS

COPIES

STUDENT SUPPLIES

724 N. Custer Street • www.ratcliffestextbooks.com
open Monday - Friday 8:00-5:30 and Saturday 10:00-2:00

**SWOSU READ
Education Service Fraternity
Fundraiser Spring 2016
ORDER FORM**

Please Print

Name: _____
Phone: _____
Email: _____
School: _____

Standard Tee Shirt	Boys/Mens Tank Tops	Premium Tees	V-Neck	Tie Dye	Premium Long Sleeve	Girls/Womens Tank Tops	Sweatshirts	Hoodies
\$12	\$16	\$17	\$18	\$18	\$20	\$20	\$21	\$26

Order Online: <http://www.swosu.edu/academics/education/fundraiser.aspx>

See garment listing below for more information on garment blend.



Sizes and Quantity

All garments available in either navy or a blue shade. If a navy garment is desired, place the number of garments needed under the "N" column. If a blue garment is desired, place the quantity under the "B" (Blue) column. Specific shade information can be found under the "Color Options" column. Design features building strong with the building logo as the c. on the state of Oklahoma with Southwestern Oklahoma State University across the top.

Garment Style:	Color Options:	YM		YL		YXL		S		M		L		XL		*2XL		*3XL		*4XL	
		N	B	N	B	N	B	N	B	N	B	N	B	N	B	N	B	N	B	N	B
Standard Tee	Adult - Navy/Antique Sapphire Youth - Navy/Sapphire																				
Boys/Mens Tank	Adult - Navy/Sapphire Youth - Navy/Royal																				
Premium Tee	Adult - Navy/Hlt/Deep Teal Youth - Navy/Heather Royal																				
V-Neck	Adult - Navy/Marble/Deep Teal Youth - Navy																				
Tie Dye	Adult/Youth - 1 option Light blue and blue mix																				
Premium Long Sleeve	Adult - Navy/Hlt/Royal Heather Youth - Navy/Royal																				
Girls/Womens Tank	Adult - Midnight/Royal Marble Youth - Navy/Sapphire																				
Sweatshirts	Adult - Navy/Antique Sapphire Youth - Navy/Royal																				
**Hoodies	Adult - Navy/Antique Sapphire Youth - Navy/Royal																				

*add \$2 to sizes 2XL and above

**add \$4 to sizes 2XL and above for Hoodies

ORDER DEADLINES:

1/22 to be picked up 2/5;
2/12 to be picked up 2/26;
3/4 to be picked up 3/25;
4/1 to be picked up 4/15;
4/22 to be picked up 5/6;

Order Online: <http://www.swosu.edu/academics/education/fundraiser.aspx>

CONTACT: Bruce Belanger AT bruce.belanger@swosu.edu or 580-774-3146 FOR MORE INFORMATION

TOTAL \$ _____

Make checks out to: **SWOSU READ**
100 Campus Drive, Weatherford OK, 73096
Place and pick up orders in:
Hilber Education Center (HSC) 110

Add \$5 for shipping orders and include mailing address.

SPORTS

Daily Fantasy Sports becomes popular among students

By Max Jirak
Staff Reporter

Daily Fantasy Sports have swept the nation with the potential to win money. Fantasy sports have become popular all over the world, especially in the United States.

DFS only last for a day, so a person does not have to keep his or her lineup ever again. The idea is to play fantasy sports every day to make money, but no one would want to play if they had to be stuck with the same players with the possibilities of someone getting hurt. The world of DFS was then born after a few legal battles.

Many students on campus play DFS from research. SWOSU has wifi for the whole school called SWOSU air and since DFS became popular the school as banned the ability to access any DFS sites such as Draftkings.



For some people, fantasy football is a way of life. Photo courtesy lenderperformance.com

The school most likely has denied this access because some believe the practice of DFS is gambling and that it should be illegal.

Tyler Hampton, who attends SWOSU, has been playing DFS the past 2 years. “I love gambling, and I love sports,” said Tyler when asked about why he started playing DFS. Tyler started playing football on DFS and

eventually started playing basketball and golf DFS. People have the option to play free leagues and quarter leagues.

DFS has had many legal battles the past year in states such as Nevada, Texas, and New York City. New York took the matter to court, but was granted a stay for now making it legal to play and accept entries to play.

Wide receiver Jones name Honorable Mention All-American

SWOSU junior wide receiver/return specialist D.J. Jones has been named an Honorable Mention All-American by D2Football.com, earning the recognition as an All-Purpose player, which takes into account his efforts on both offense and special teams.

D2Football.com becomes the third outlet to recognize Jones following his standout season. He was previously named a Second Team selection to The Associated Press Little All-America Team as an all-purpose player along with earning First Team All-American honors as a kick return specialist from the Division II Conference Commissioners Association (D2CCA).

Jones set a new single-season record for punt return touchdowns at SWOSU, leading the Great American Conference and ranking second nationally after returning punts for scores in back-to-back weeks during midseason against Southern Nazarene

and Oklahoma Baptist.

In his first season with the Bulldogs, Jones returned 14 punts for 275 yards and two touchdowns while also taking back 22 kickoff attempts for 533 yards.

His punt return yardage is the second-best total in SWOSU history and he ranked second in all of NCAA Division II for return average before he fell out of the national rankings due to lack of attempts. Jones was also the Bulldogs top receiving threat this season, catching 54 passes for 903 yards and seven touchdowns and he set a new single-season school and conference record with 1802 yards all-purpose yards this season.

D2Football.com is considered “The Center of the D2 World” and the All-America Team was selected by the staff of D2Football.com with input from coaches, scouts, media members and sports information directors from around the country.



Kylie Franz attacks NWOSU’s defense in home action earlier this season. Franz and the Lady Bulldogs upset Harding with a last-second shot on Saturday. (Photo by Nakota Taylor)

Lady Bulldogs stun Harding at the buzzer for first win in Searcy

SEARCY, Ark. – The Lady Bulldogs lost their starting point guard to injury, battled foul trouble, lost a 17-point lead and overcame a four-point deficit in the final two minutes to earn their first-ever victory at Rhodes-Reaves Field House on Saturday afternoon, defeating Harding 79-77 on a lay in by Janae Coffee at the buzzer.

SWOSU came out of the gates strong, building a lead of 20-5 in the early going in a stretch that saw point guard Jade Jones hit her first two field goal attempts before leaving the game with an injury. Hailey Tucker was the main offensive threat as the Lady Bulldogs extended their lead to 17 at 27-10 late in the first quarter. Harding closed the first quarter on an 11-3 run and scored the final 10 points of the second quarter as the Lady Bulldogs led by just one, 40-39, at halftime despite 18 first-half points from Tucker.

Harding hit a three-pointer on their opening possession of the second half and they would not relinquish the lead until the final seconds. The Lady Bisons led by as many as seven during the third quarter, but they were unable to pull away from SWOSU, who battled back and stayed close.

Kylie Franz hit four three’s during the fourth quarter, keeping the Lady Bulldogs close during a stretch that saw both teams trade three-point field goals on four straight possessions. SWOSU trailed 76-72 with 1:57 to play, but Franz’s final three got her squad within one with less than a minute remaining. Following a Harding turnover, Tucker gave SWOSU

the lead with 23 seconds to play, but the Lady Bisons got to the teammate and tied the game at 77-77 with 6.9 seconds to play.

Hayden Priddy, who played a career-high 37 minutes in Jones’ absence, brought the ball up and swung it around until Morgan Vogt found herself on the right wing with little time remaining. Vogt drove baseline, forcing help from a Harding defender and allowing her to find Coffee underneath all alone to lay in the final basket as time expired, bringing the entire SWOSU team off the bench for a celebration underneath the goal.

“What a big win for my team, I couldn’t me more proud of them for fighting for their teammates,” SWOSU Head Coach Kelsi Musick said. “This is a really close team, they never got down and continued to fight even when things weren’t going our way, but we found a way to get this win for Jade today.”

Hailey Tucker tied her career-high, finishing with 24 points on 9-of-25 shooting from the field and 3-of-15 from long range. Morgan Vogt scored 16 points in 38 minutes while Kylie Franz had 15 points in 36 minutes and Janae Coffee’s final basket put her into double figures with 10 points on 5-for-6 field goal attempts.

SWOSU improves to 12-7 on the year and 8-5 in league play with the win, which moves them to within one game of Harding for second place in the league standings. The Lady Bulldogs are back at home next weekend, facing Arkansas-Monticello on Thursday evening at the Pioneer Cellular Event Center.



Nick Shoemaker battles two NWOSU for a rebound earlier this year. The Bulldogs face Arkansas-Monticello this Thursday at home. (Photo by Nakota Taylor)

Bulldogs drop second straight road contest

home game Thursday

Rhoads-Reaves Fieldhouse has always been a tough place for the SWOSU Bulldog Basketball team to play and Saturday was no exception as Harding shot 48% from the field and hit 15 three-pointers to hand the Bulldogs a 84-59 defeat.

Harding blitzed SWOSU from the outset with a 15-2 run to open the game and their lead expanded to 32-10 with 7:31 to play in the opening half before the Bulldogs got a few shots to fall.

SWOSU shot 33% from the field in the opening half, but Harding hit 9-of-17 three-pointers and took a 45-32 lead to the intermission.

SWOSU scored the first four points of the second half to get the lead down to nine at 49-36, but Harding responded with an 8-0 run and never looked back, leading by as many as 25 in the final minute for the final count of 84-59.

Martell Collins scored a team-high

17 points for the Bulldogs, snapping his five-game streak of scoring better than 20 points.

Markeise Champion added 15 points for SWOSU, but no other player had more than six points.

Ayo Ojo scored six points and grabbed a team-leading 10 rebounds in the defeat.

“Harding is always a difficult place to play because they are a very talented team,” SWOSU Head Coach Bob Battisti said. “The difference today was they made shots at a higher rate than we did and they took it to us from the very beginning. We can’t get discouraged, now we have to get ready back at home on Thursday night.”

SWOSU (11-8, 7-6 GAC) is back in action at the Pioneer Cellular Event Center on Thursday night, facing Arkansas-Monticello with tipoff slated for 7:30 pm.

BACK PAGE

Sudoku

	4							
		7	5		1	6		2
		2		8		5		
1		4		7	6	3	9	
3	6						7	4
	7	8	4	9		1		6
		5		2		7		
4		6	7		5	8		
							1	

© 2013 KrazyDad.com

Res Life

Super Bowl 50 Party

Neff Hall’s RAs are hosting a watch party for Super Bowl 50 Sunday February 6th starting at 7pm. Super Bowl 50 has two great matchups this year. One Peyton Manning, a meticulous seasoned veteran of the game against Cam Newton, a young and energetic possible league MVP. Two, the exciting defense of the Denver Broncos against the high octane offense of the Carolina Panthers will be fun to watch! So come by Neff Hall for free food, good people, and a chance to win prizes. See you Sunday!!

PICS OF RES LIFE



Answers

5	4	1	6	3	2	9	8	7
9	8	7	5	4	1	6	3	2
6	3	2	9	8	7	5	4	1
1	5	4	2	7	6	3	9	8
3	6	9	1	5	8	2	7	4
2	7	8	4	9	3	1	5	6
8	1	5	3	2	4	7	6	9
4	9	6	7	1	5	8	2	3
7	2	3	8	6	9	4	1	5

T	S	V	E	Y		S	E	O	T		S	D	O	S
S	U	I	N	T		I	N	S			U	E	I	T
E	P	O	R	T		N	O	R			O	S	T	V
N	O	I	A	T		E	L	O			R	O	A	D
					N	E	M			R	E	N	E	O
T	S	E	T		B	E	D			A	E	R		
A	R	E	V		D		S	A	N	D		E	E	P
T	S	E	I		S	E	A	V		R	L	A	R	
E	N	S	E		N	E	T	C	E	N	T	I	O	B
			N	O		T	O	N		A	R	N	A	
Y	E	R	E		C	H				L	I			
K	R	E			E	L	C	A	B		L	A	M	P
A	V	O	N		T	A	R	P			N	I	N	C
N	E	D	E		S	E	R	I		S	E	L	I	V
C	A	N	S		R	A	G	A		R	A	G	E	R

resident spotlight Paige Ketch



Hometown: Mustang, OK

Classification: Junior

Major: Elementary Education

Resident Hall: Stewart Hall

Why did you choose SWOSU?

I chose to attend SWOSU because of the small class sizes. This has really been prominent this semester with my largest class having around 20 students.

What are your hobbies?

A few of my hobbies include playing volleyball, being active, baking and knitting.

What do you want to do when graduate?

Once I graduate from Southwestern, I hope to find a teaching job in Texas. Right now I am thinking I'd like to teach third grade and coach volleyball.

What's your favorite SWOSU moment?

Supporting the football team at the Texarkana Live United Bowl Game. Go Dawgs!

resident spotlight Jacobi Wilson



Hometown: Newcastle, OK

Classification: Freshman

Major: Health Science

Resident Hall: Oklahoma Hall

Why did you choose SWOSU?

Haley Zellner convinced me to come and be her roommate.

What are your hobbies?

I am in Sigma Sigma Chi and love to hang out with my friends.

What do you want to do when you graduate?

I want to become a nutritionist.

What's your favorite SWOSU moment?

My favorite SWOSU moment is when i became a member of Sigma Sigma Chi.

ResLIFE Happenings

What	When	Where
ResLife Spring Movie Series: Mockingjay Part 2	Feb 9 th	Fine Arts Center
Oklahoma Hall		
Sex Talks And Blow Pops	Feb 11 th	OK Hall Lobby
Stewart Hall		
Foosball Tournament	Feb 9 th	Stewart Hall Lobby
Black Kettle Hall		
Rocket League Tournament	Feb 11 th	Black Kettle Lobby
Roll a Natural 20...16	Feb 16 th	Black Kettle Lobby
Neff Hall		
Super Bowl Watch Party	Feb 7 th	Neff Hall Lobby
Mortal Kombat X Tourney	Feb 10 th	Neff Hall Lobby
"B" Movie Night	Feb 16 th	Neff Hall Lobby
FIFA 16 Tourney	Feb 17 th	Neff Hall Lobby
Balls of Fury	Feb 18 th	Neff Hall Lobby