



Echoes from the Hill

Southwestern Oklahoma State University Office of Institutional Advancement and Alumni

Follow this and additional works at: <https://dc.swosu.edu/echoes>

Recommended Citation

Southwestern Oklahoma State University Office of Institutional Advancement and Alumni (2003) "Echoes from the Hill," *Echoes from the Hill*: Vol. 84 : Iss. 2 , Article 2.

Available at: <https://dc.swosu.edu/echoes/vol84/iss2/2>

This Article is brought to you for free and open access by the Magazines at SWOSU Digital Commons. It has been accepted for inclusion in Echoes from the Hill by an authorized administrator of SWOSU Digital Commons. For more information, please contact phillip.fitzsimmons@swosu.edu.

Echoes from the Hill

Southwestern Oklahoma State University's Alumni Magazine

Winter 2003

Volume 84, No. 2

SWOSU

TM

Southwestern Oklahoma State University

In This
Issue...

page 4

Centennial plaza honors alumni

page 2

page 11

page 17



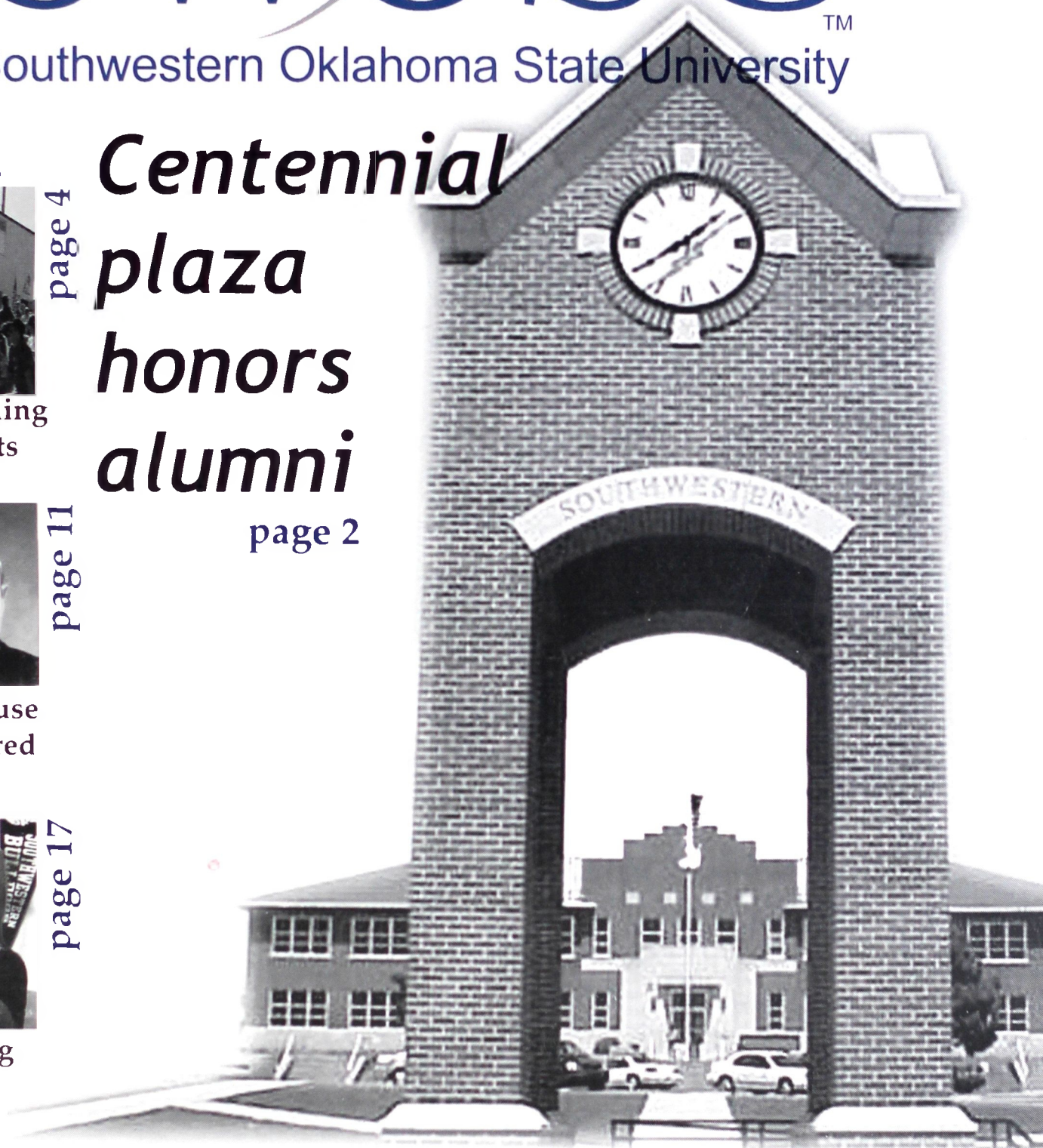
Homecoming
2002 events



Mark Mouse
remembered



Marketing
SWOSU



Echoes

Alumni News

Centennial Plaza dedication **2**

Distinguished Alumni 6

Mark Mouse remembered 11

Campus News

Wellness center proposed 15

Current events

Regent Renfro spotlight 22Unclaimed diplomas 26

Athletic Hall of Fame 30

Editor Kari Jones
Alumni Director. Jim Waites
Public Information Director. Brian Adler
Publication Design Joel Kendall
Copy Editor Keith Long
Contributing Writers Joel Kendall, Shane Brashears, Jill Weber,
Megan Walz, Jon Owens, Shelby Higdon, Traci Hoffman,
Tabatha Kathol, Adrienne Weaver, Erika McDaniel,
April Larsen, Jennifer Bradford, Kendra Kidd, Stephen Glover
Contributing Photographers Nina Kelso and Greg Rogers

Echoes from the Hill is published semiannually by the Southwestern Oklahoma State University Office of Institutional Advancement and Alumni. This publication, printed by the University Press, is issued by Southwestern Oklahoma State University as authorized by Dr. John Hays, President. A total of 2,700 copies have been prepared for distribution at a cost to the taxpayers of the State of Oklahoma of \$4,725.00. Third class postage is paid at Weatherford, OK., 73096 under permit 57. Change of address notices and other correspondence should be sent to Office of Institutional Advancement and Alumni, Southwestern Oklahoma State University, 100 Campus Dr., Weatherford, OK, 73096.

Like clockwork



PHOTO BY GREG ROGERS

For several decades, a wide road separated the Student Union and the Al Harris Library.



PHOTO BY GREG ROGERS

That road was dug up in May to make way for the Centennial Plaza, which included a 30-foot high clock.

PHOTO BY AMBER ESADA



Through the hot summer, crews directed by former physical plant director Jim Loomis constructed the plaza and clock.



PHOTO BY NINA KELSO

The clock was finished by the start of the fall semester, and the plaza was dedicated during Homecoming on Oct. 5.



Dr. John Hays (right) is assisted by Richard Hasley, Johnny Beech and Harold Wright in cutting the ribbon to the Centennial Plaza.

Alumni make time for clock dedication

BY SHANE BRASHEARS
CONTRIBUTING WRITER

At noon on Oct. 5, Southwestern dedicated the Centennial Clock Tower.

Linda Kay Jones, Alumni Centennial Plaza Committee Chair, hosted the dedication.

"The tower was built for Southwestern and everyone should enjoy it," said Jim Waites, assistant to the president for institutional advancement.

The tower was built from private funds, including money generated by selling bricks

put in the plaza. Construction began in May and ended early fall.

The dedication followed a Saturday brunch.

The Southwestern marching band, cheerleaders and pom squad entertained at the dedication.

During the dedication, everyone who helped build the tower was honored.

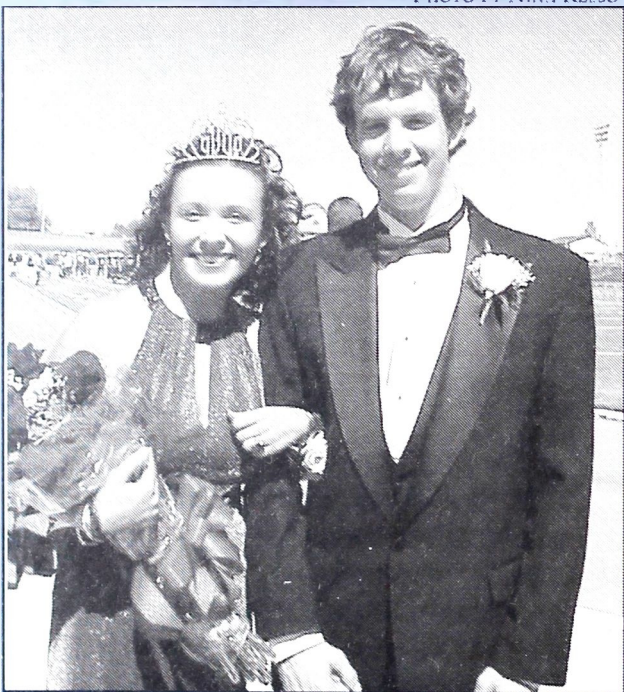


Linda Kay Jones makes comments during the dedication while Janie Edney of the Oklahoma Centennial Commission looks on.



These Southwestern Oklahoma State University alumni won blankets at the Alumni Brunch held in conjunction with homecoming activities. Jack Bonny won a blanket for having the most children (two) who graduated from SWOSU. Evelyn Carter McKasson was the oldest alum in attendance. Not pictured is Dr. Garry McKee, who won a blanket for traveling the longest distance (1,300 miles) to attend homecoming activities. The blankets are given by the SWOSU Alumni Association.

PHOTO BY NINA KELSO



Misty Williams of Eakly and Derek Jamison of Oklahoma City were honored as Homecoming queen and king. Williams was sponsored by Pi Kappa Delta while Jamison was sponsored by the SWOSU Nursing Association. The winners were announced prior to Southwestern's 24-21 football victory over the University of Central OK.



The Homecoming parade featured all kinds of vehicles, from convertibles carrying dignitaries to golf carts with balloons.



Music was also varied at the parade, from high school and Southwestern's bands to this one-man band.



In the annual bed race, Neff Hall (left) got out to a quick start. However, Stewart Hall (right) came from behind to take the trophy.

Homecoming 2002

PHOTO BY NINA KEISO



A crowd of nearly 7,000 watched Southwestern defeat rival Central Oklahoma 24-21. The game was won on the last play of the game when SWOSU's Scott Poole kicked a 40-yard field goal.

PHOTO BY NINA KEISO



Southwestern cheerleaders fired up those in attendance for the Centennial plaza dedication before the football game.

PHOTO BY NINA KEISO



The pom squad and twirlers also participated in cheers at the dedication.

PHOTO BY NINA KEISO



The Southwestern marching band performs during halftime.

PHOTO BY NINA KEISO



Chasity Dixon shows off clothes from The Kloset during the style show on Friday.

Health official, educator inducted into Distinguished Alumni Hall of Fame

BY PUBLIC INFORMATION STAFF

Southwestern Oklahoma State University graduates Dr. Garry L. McKee of Washington, D.C., and Alvin H. Alcorn of Edmond were inducted into the Southwestern Oklahoma State University Distinguished Alumni Hall of Fame during 2002 homecoming activities Oct. 4-5 on the Weatherford campus.

DR. GARRY L. MCKEE was recently appointed Administrator of the Food Safety and Inspection Service by U.S. Agriculture Secretary Ann M. Veneman. The FSIS, a public health regulatory agency of the U.S. Department of Agriculture, protects consumers by ensuring that meat, poultry and egg products are safe, wholesome and accurately labeled.

Dr. McKee served six months as Administrator of Wyoming's Public Health Laboratory followed by three plus years as Director of the Wyoming Department of Health. Prior to that, McKee was Chief of the Oklahoma State Department of Health's Public Health Laboratory for 18 years and Director of Sanitary Bacteriology for two years.

He also serves as a member of the National Public Health Anti-Terrorism Preparedness Task Force with the Association of State and Territorial Health Officials.

McKee, a native of Southard and 1965 graduate of Enid High School, has been involved in many organizations and professional societies. He has three sons and two grandsons. He has an identical twin brother, Dr. Larry McKee, who is on the faculty at SWOSU.

ALVIN H. ALCORN is a native Oklahoman who excelled as an educator and community leader in Edmond. Starting from a modest childhood in Geary, he progressed through the Geary Public Schools to Southwestern where he earned a Bachelor of Science degree in education in 1942. After serving in the U.S. Navy during World War II, Alcorn earned a master's in school administration from Oklahoma State University.

Alcorn had a wide variety of educational experiences, ranging from the public schools in Greenfield and Buffalo to the Oklahoma State Department of Education. The highlight of his career was serving as vice president for administration/ executive vice president at the University of Central Oklahoma. He was instrumental in increasing the size of UCO's campus from 40 acres to 210.

Alcorn was appointed to the Rose State College Board of Regents in 1987 and was reappointed to the board in 1994.

He has long been a major voice for the role of higher education in improving the quality of life for all Oklahomans. He advocated the blending of higher education and economic development as the two keys to the future.

Alcorn has been a big supporter of his hometown, Edmond, and served as president of the Edmond Chamber of Commerce in 1972. He was selected as Edmond Citizen of the Year in 1976 and was selected for the Edmond Hall of Fame in 1983. Alcorn was instrumental in the development of the Edmond Industrial Trust and has been involved in many organizations in the Edmond area.

Alcorn and his wife of 62 years, Naomi, have two daughters and four grandchildren.



Garry McKee (second from left) of Washington, D.C., and Alvin Alcorn of Edmond were inducted into the SWOSU Distinguished Alumni Hall of Fame during homecoming activities held October 5 in Weatherford. With the pair are SWOSU President John Hays (left) and Jim Waites, assistant to the president for institutional advancement at SWOSU.

Southard native finds home in D.C.

By JILL WEBER
CONTRIBUTING WRITER

Dr. Garry McKee, a native of Southard and recent inductee into Southwestern's Distinguished Alumni Hall of Fame, earned his bachelor's in biology from Southwestern in 1969.

McKee decided to attend pharmacy school at Southwestern. After two years, he became interested in biology. He changed his major, went into medical technology and focused on microbiology.

"I was intrigued with the biological systems," McKee said. "(I could only use the microbiology degree) by going into graduate work or lab work, which is what I did."

McKee received his masters in public health and environmental science and a doctorate in microbiology from the University of Oklahoma.

"I remember the quality of the teaching and the education at Southwestern," said McKee. "My biology professor, Dr. Wolgamott, was very instrumental and helped me a lot on my way to

graduate school."

McKee is excited about being inducted into the Distinguished Alumni Hall of Fame.

"I am very flattered," said Dr. McKee. "It is a very prestigious award. I always tell people what a good basic education I received from Southwestern. It is one of the best schools around. I hope that I have made Southwestern proud."

Dr. McKee was recently appointed Administrator of the Food Safety and Inspection Service by U.S. Agriculture Secretary Ann M. Veneman. The FSIS, a public health regulatory agency of the U.S. Department of Agriculture, protects consumers by ensuring that meat, poultry and egg products are safe, wholesome and accurately labeled.

"It is an intriguing and interesting job," said McKee. "A person needs to be able to take a certain amount of risk to take the next step in his or her career."

McKee's twin brother, Larry, is now a professor at Southwestern.

Plaza bricks are still on sale

By MEGAN WALZ
CONTRIBUTING WRITER

Alumni, students, faculty and staff can still be a part of Centennial history.

Centennial Plaza bricks are still available. They can be engraved for students, family members, graduates and even pets.

Jim Waites, assistant to the president for institutional advancement, said that



bricks will continue to be added even though it is finished.

The bricks come in three different sizes; small, 4-inch x 8-inch for \$65 (with a rate of \$40 for students); large, 8-inch x 8-inch for \$125; and logo brick, 12-inch x 12-inch for \$550.

These bricks are on sale throughout the year. To purchase a brick, call the Alumni Office at (580) 774-3267.

Homecoming golf scramble winners announced

Aaron Kauk, Nathan Schreck, Cory Winters and Mike Bond comprised the winning team at the SWOSU "Big Dawg" Golf Scramble held Oct. 4 during homecoming activities in Weatherford. Closest to the hole competitions were won by George Atkins, hole #3; Les Levy,

#5; Kelvin Casebeer, #8; Skip Klingman, #10; and Bruce Magill, #17. Mike Bond had the longest drive on hole #11. Jim Waites, director of the SWOSU Alumni Association, said the scramble is a fun event held each year on the Friday of homecoming weekend.

Southwestern Let Southwestern meet your hiring needs

- ❖ Numerous Recruiting Methods
- ❖ 3 Career Fairs
- ❖ Resume Referral Service
- ❖ Convenient On-Campus Recruitment Programs
- ❖ Networking with Student Organizations
- ❖ Job Posting Service
- ❖ Interaction with Faculty
- ❖ Employer Literature Center
- ❖ World Wide Web Links

For more information, contact:

Tamra Misak, Assistant Director, Placement Services

100 Campus Drive Weatherford, Oklahoma 73096 (580) 774-3233 misakt@swosu.edu

www.swosu.edu/admin/placement

Wright takes over alumni presidency

By PUBLIC INFORMATION STAFF

G. Harold Wright, Jr., of Weatherford is the new president of the Southwestern Oklahoma State University Alumni Association.

Wright will serve a two-year term as president of the association, which sponsors and supports many activities at SWOSU.

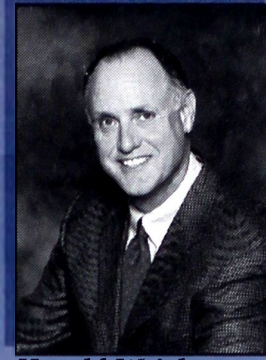
Wright is a 1971 graduate of Southwestern and chief executive officer of Wright Wradio. His interest in radio broadcasting began while working at university and community radio stations while in college.

He worked in programming and sales at KWEY Radio in Weatherford. He was sales manager at WMBR Radio in Jacksonville, Fla., before moving back to

Oklahoma in 1975 to become part owner and general manager of KRPT Radio in Anadarko.

Wright fulfilled a dream when he purchased his hometown radio station and moved back to Weatherford in 1991. He manages Wright Wradio and operates four stations in western Oklahoma. He is also active in community affairs.

He is a past president of the Oklahoma Association of Broadcasters, Anadarko Chamber of Commerce, Weatherford Chamber of Commerce, Anadarko and Weatherford Rotary Clubs, and Weatherford YMCA. He served as mayor of Anadarko from 1985-87.



Harold Wright

Alumni busy with ongoing activities

Clock tower and membership drive headline activities

By JILL WEBER

CONTRIBUTING WRITER

The alumni department has wrapped up the Centennial clock project and has moved into the annual membership drive, according to Alumni Director Jim Waites.

The annual alumni membership fee is \$30 and gives the purchaser many opportunities one can't obtain without the membership, Waites said. The first year after graduation, membership is complimentary. A lifetime couple membership is \$500. A single lifetime membership is \$400.

The alumni department consists of Waites, administrative assistant Sandy Miller and graphics and publications coordinator Kari Jones.

In December, the Alumni department will schedule the entire next year and all the activities that will take place.

The biggest event for the office is Homecoming. "Since we turned Homecoming into a two-day

celebration," said Waites, "we have had a lot more participation in the activities. There's not as much pressure to get everything done in one day."

A brunch is held to recognize alumni who have been out of college for 50 years. This past Homecoming, 17 alumni were recognized.

This was also the first year a tailgate party was organized.

"It turned out kind of slow this year," said Waites, "but we're going to work on it for next year."

Distinguished Alumni have been recognized at a ceremony during Homecoming, but Southwestern will begin recognizing the honorees during graduation in the future.

"Graduation is a better time to recognize our Distinguished Alumni," Waites said, "and the crowd is a lot bigger, too."



PHOTO BY PUBLIC INFO STAFF

Paul Meyer (second from left) of Meyer Architects recently presented a \$4,000 check to Southwestern Oklahoma State University President John Hays for a beautification project on the Weatherford campus. The money will be used to purchase trees for the Centennial Plaza area. Also pictured are (left) Gary Armbruster of Meyer Architects and (right) Jim Waites, assistant to the president for institutional advancement at SWOSU.

Donated trees to replace diseased elms

By JON OWENS
CONTRIBUTING WRITER

A donation from Meyer Architects will help beautify the Centennial plaza and also fill the void left by many dead and diseased elm trees.

Some trees around the clock tower will be cut down, said SWOSU vice president Tom Fagan.

"In order to ensure even growth among new trees, we will need to get rid of the trees in the area," Fagan said.

Many trees on campus were damaged during last February's ice storm. The ice storm also exposed the trees to the elm beetle damage.

"If your skin is cut open you are more susceptible to disease. The ice storm opened up trees and made them easy targets for disease," said Dr. Bill Seibert, biology professor.

The deck tree on the East side of the Student Union will be spared.

"Since the deck is built around it we will try to continue to doctor it," Fagan said. "We believe it still has a few more years in it."

Trees that will be planted include oaks and lace bark elms. The lace bark elm is not expected to be plagued by the same problems of the American elm.

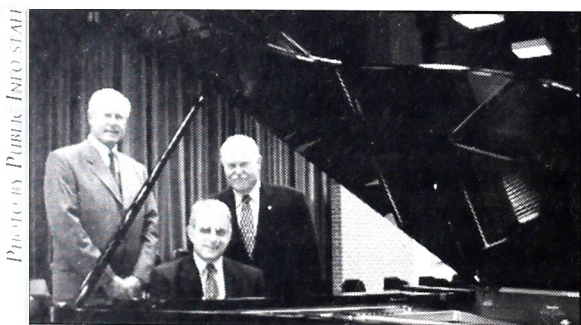


PHOTO BY PUBLIC INFO STAFF
At a piano are assistant to the president for institutional advancement Jim Waites, music department chairman Terry Segress and president John Hays.

Anonymous alums donate pianos

By PUBLIC INFORMATION STAFF

The music department has received four new pianos through a donation from two alumni who wish to remain anonymous. The donation was matched by the SWOSU Foundation.

The alumni donated money for the purchase of two Kawai Model K-50 studio upright pianos and two Kawai Model RX-2 grand pianos. They replace pianos that were more than 50 years old.

University saddened by death of Mark Mouse

Southwestern has lost beloved alumnus and former director of placement. Mark Mouse succumbed to leukemia on Nov. 16, 2002. He was 71.

Mouse served as director of placement and high school/college relations from 1967 to 1992. He was well-known and well-liked by principals and school counselors across the state. He was also respected for his ability to place students in the right jobs. At his funeral at Weatherford's First Baptist Church, the church was filled with current and former college and school officials.



Mark Mouse

Mouse was born to Harry and Pearl (Meacham) Mouse on Jan. 9, 1931, near Foss. He was raised north of Foss and attended Prairie View and Pie Flat schools. He graduated from Canute High School in 1948.

He attended Southwestern, where he obtained his degree in English and biology in 1952.

Immediately after graduation, Mouse entered the military and served in the Korean War.

Mouse started teaching at Custer City School in 1954 and was promoted to principal two years later.

On Aug. 5, 1957, he married Sheila Frans.

In 1958, Mouse received a master's degree from the University of Oklahoma. In 1963, Mouse became the junior high/high school principal at Weatherford.

Four years later, he accepted the

position of director of placement and high school/university relations.

Mouse's most enjoyable moments were spent with his family. He loved entertaining friends in his home.

Mouse is survived by his wife, Sheila Mouse, of Weatherford; a daughter, Melani Mouse of Oklahoma City; a son, Monte Mouse and his wife-to-be, Vickie Widener, and her two daughters, Taylor and Paige Widener, of Weatherford; a sister, Genive Word, of Elk City; two brothers, Leslie Mouse and his wife, Sandra, of Elk City, and Mick Mouse of Oklahoma City. He was preceded in death by his parents, Harry and Pearl Mouse, and two brothers, Gene and Lester.

Memorials may be made to the SWOSU Foundation or the Leukemia Society, Oklahoma Chapter, 3613 N.W. 56th St., #230, Oklahoma City, OK 73112.

Sayre professor's death shocks campus

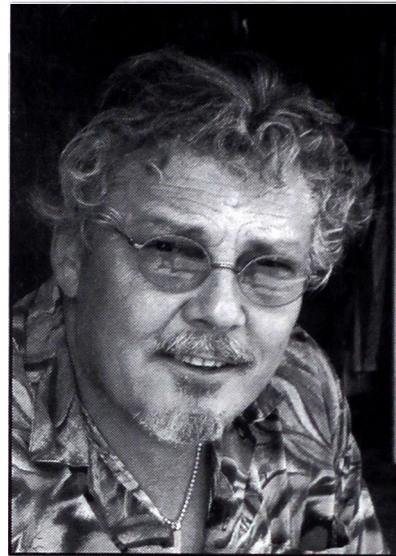
The Sayre campus was stunned by the sudden death of assistant professor C. Michael McKinney.

McKinney was found dead in his Leedey home in early December. He had apparently suffered a heart attack. McKinney's health had been faltering and he was diagnosed with pneumonia the previous month.

McKinney taught English, literature and journalism courses at Sayre. He and his courses were well-liked by students.

McKinney also served as copy editor and webmaster for *Westview*, Southwestern's literary journal. He was an accomplished photographer, and many of his pictures graced the cover and pages of the publication.

His knowledge of the subject matter and innovative teaching techniques made his classes enjoyable. He often integrated new technology. In fact, he was the first to offer web-based courses



C. Michael McKinney

at Southwestern.

His involvement at Sayre went outside the classroom. He was the Sayre representative for Southwestern's Faculty Senate. He founded and was the

sponsor for Sayre's chapter of Phi Theta Kappa, a scholarly fraternity of students in community and junior colleges.

The Sayre campus held a memorial for McKinney seven days after his death. McKinney was full of knowledge, life and excitement for his job. He will be missed.

We Remember

<u>Name</u>	<u>City State</u>	<u>Grad Year</u>	<u>Name</u>	<u>City State</u>	<u>Grad Year</u>
William B. Austin, Jr.	Altus		Lee Allen Jordan	Seiling	1982
Zuma Austin	Amarillo TX	1951	Clyde Darrel Kitchens	Weatherford	1969
Edna Criswell	Altus		Glenn Scott Lamb	Sayre	1986
Eula Jo Drury	Altus	1969	Darrel Mac Lucas	Weatherford	1970
Peggy Sue Endersby	Woodward	1996	W.T. Malone	Duncan	1950
Ruth Ann Friesen	Weatherford	Attended	Donny Paul Meason	Anadarko	1994
Taylor Lee Gillespie	Jacksonville Beach FL		Mark Mouse	Weatherford	1952
Carl Eldon Henry	Weatherford	1967	Joe Ross	Thomas	
Cherie Jeanette Holbrook	Weatherford	1979 & 80	Foy Stout	Sulphur	1934
Shannon Bower Iwanaga	Woodward	1996 & 98	Helen Greene Taylor	Thomas	1941

SWOSU ALUMNI NOTES

JILL KIEWER received a masters of health science degree in December from the Oklahoma College of Medicine. Jill is a 1995 graduate of Canton High School and received a bachelor of science degree in biology from SWOSU, cum laude, in 2000. After passing her national certification board examination, Jill has accepted a position in dermatology with Dr. Matthew Barrows in Allen, Texas, as a certified physician's assistant.

J. I. JOHNSON (1979-BA AND 1988-MBA) began work at Southern Methodist University on Aug. 1 as the Director of Financial Accounting for the

university. Johnson has spent the majority of his 20+ year career working as an audit manager for Big Five public accounting firms, and as a financial officer of higher education and not-for-profit organizations. In his new position, Johnson is responsible for the financial accounting and reporting for the university as well as coordinating SMU's various auditing engagements with the independent auditing firm.

DR. THOMAS SCHNEIDER, D.O. Fellow of American College of Osteopathic Internists of Tahlequah, was honored in October at the

2002 Fellows Convocation in Scottsdale, Ariz., by the American College of Osteopathic Internists for excellence in the practice of Internal Medicine. To qualify for the degree of Fellow, a physician must demonstrate continuing professional accomplishments, scholarship and professional activities, such as teaching, research and community service. Dr. Schneider is a graduate of Thomas High School, SWOSU and the Oklahoma College of Osteopathic Medicine in Tulsa. He lives in Tahlequah with his wife, Dr. Donna, and their three children. He has an internal medicine practice at W.W. Hastings Hospital.

SWOSU wants to know about you

Echoes from the Hill is making it easier for you to give updates on your career and family. You have three ways to keep us in touch.

1) Complete and mail the form on the last page of this magazine.

2) E-mail you information to jonesk@swosu.edu.

3) Send in a newspaper clipping that details an accomplishment.

By letting us know about your life, we can tell others through this magazine.

Moving?

If you have just moved or are planning to move, please let the Alumni Association know your new address.

Just call us at (580) 774-3267 drop us a note at the:

SWOSU Alumni Office
100 Campus Drive



What's Happening at SWOSU?



Check it out on the Web!

All alumni and friends are encouraged to visit the SWOSU web site for both the Weatherford and Sayre campuses.

The address is:

www.swosu.edu

The site has been up and running for nearly five years. Many aspects of Southwestern are featured, so be sure to take a look at what's happening on the "hill"!

CAMPUS IMPROVEMENTS

Adventure programs added across state

BY PUBLIC INFORMATION STAFF

Southwestern recently signed contracts with the Oklahoma Office of Juvenile Affairs to manage adventure programs at Enid, Lawton and Lake Tenkiller.

The three sites will be similar to the current SWOSU Adventure Programs at Foss Lake and Ghost Mound, according to Dr. Ken Rose, interim dean of the SWOSU School of Arts and Sciences.

The sites provide treatment, programming and education for adjudicated youths ages 13 to 17 years of age with active supervision on a 24-hour basis.

Rose said SWOSU provides a service to the State of Oklahoma, and SWOSU students and faculty benefit with opportunities in student employment, student practicums, faculty research and cutting-edge treatment methodologies in such areas as wilderness programming, social work, psychology and education."

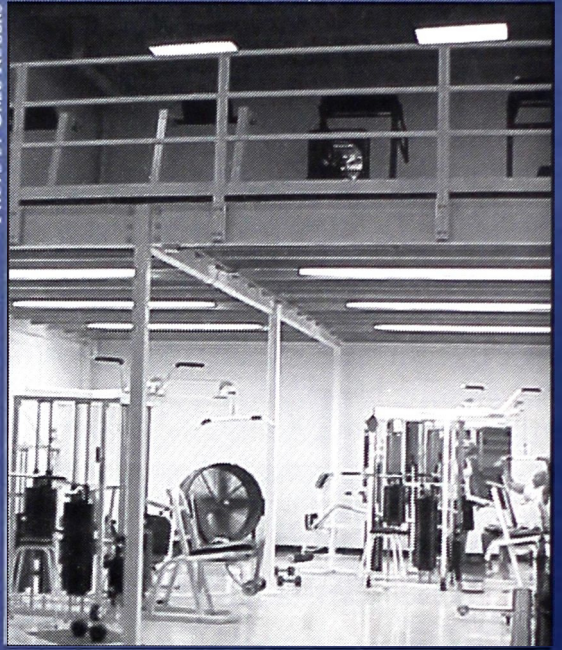
"Southwestern welcomes the opportunity to partner with another state agency for the benefit of Oklahoma citizens," SWOSU President John Hays said. "The partnership with OJA has been effective and provides opportunities for both agencies to better serve its constituents."

SWOSU and OJA officials have been working the last month to facilitate the transfer of these programs to the university. Hays and OJA Director Richard DeLaughter signed the final contracts on November 4.

SWOSU has worked with OJA at the Foss Lake Adventure Program since 1995 and the Ghost Mound program since 1999. The Foss Lake program is located between Clinton and Elk City, while the Ghost Mound program is south of Hydro.

"The Office of Juvenile Affairs is dedicated to developing unique partnerships insuring quality services are provided to Oklahoma's troubled youth," DeLaughter said. "This relationship with Southwestern Oklahoma State University is a testament to a state agency and a higher education institution's ability to think outside the box and make great things happen for Oklahoma."

PHOTO BY GREG ROGERS



The cardio workout room in the HPER building now utilizes higher space for more intense workouts.

Workout room added to gym

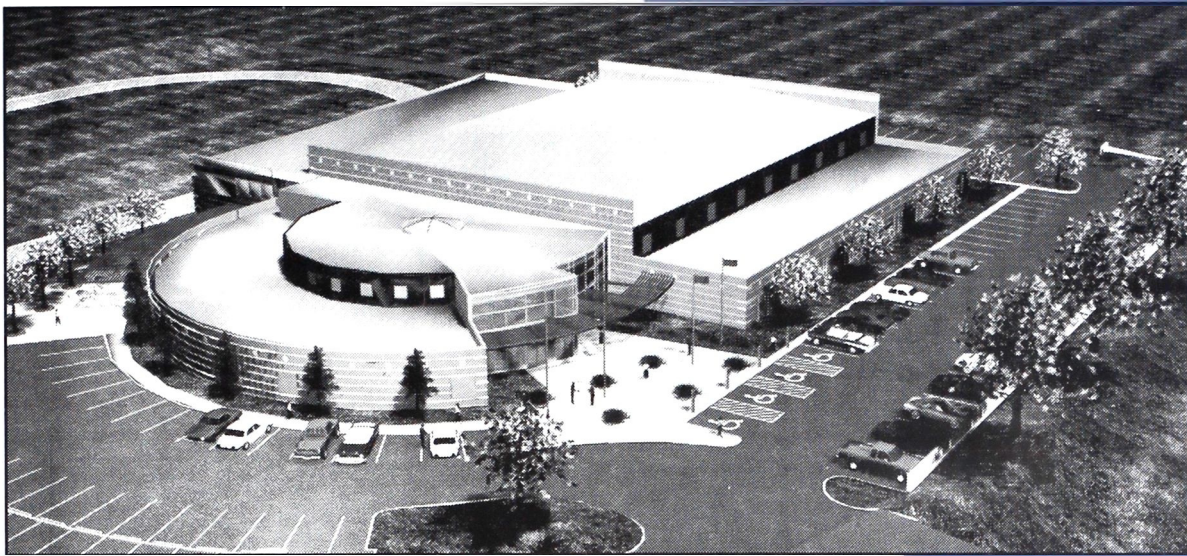
BY TRACI HOFFMAN
CONTRIBUTING WRITER

The Rankin Williams Fieldhouse received improvements to the cardio workout room.

A second floor has been added so the room can accommodate the equipment, as well as students, faculty and the general public that use it.

"It was getting kind of tight in there," said Nelson Perkins, intramural director. "It's bad when people working on the treadmill bump people on the weight machine."

Located on the new floor are four electric treadmills, two steppers and an elliptical runner. Remaining on the bottom floor are two weight machines. Also remaining on the lower level are the dumbbells.



Shown is an architect's drawing of the proposed Wellness Center.

Wellness Center tops improvement plans

BY JON OWENS
CONTRIBUTING WRITER

On Aug. 28, 2002, a grant proposal went to a private foundation to help build a \$9 million wellness center at Southwestern. If approved, construction of the center will start next fall at the site of the current baseball field.

The facility will include three basketball courts, wellness classrooms, wall climbing, two racquetball courts, a fitness center and work out rooms.

"Neither the athletes or the intramural sports have the space they need. Having two separate facilities will free up space," said Tom Fagan, vice-president of administration.

Additional features include office space for intramural staff, a nurse's office and an indoor track.

The center is designed with two floors totaling 72,000 square feet.

Other projects going on around campus for the year include a new roof on the Old Science building and the renovation of the second floor of the CCP building.

"Wireless internet was installed in Rogers, Jefferson and Oklahoma Halls this summer," Fagan said. "We are looking to build apartment housing in the future."

With the crisis over budget cutbacks, some people may question if Southwestern is able to afford such a facility.

"By law, certain funds have to go to certain budgets. Southwestern has an aggressive capitol improvement plan. It will be hard to raise the funds, but it will be beneficial to the school," Fagan said.

Softball team gets home on the range

BY TABATHA KATHOL
CONTRIBUTING WRITER

Construction will finish by spring on the athletic complex that will be home to the Lady Bulldog's softball team. The complex will be a half-mile north of the university on Caddo Street.

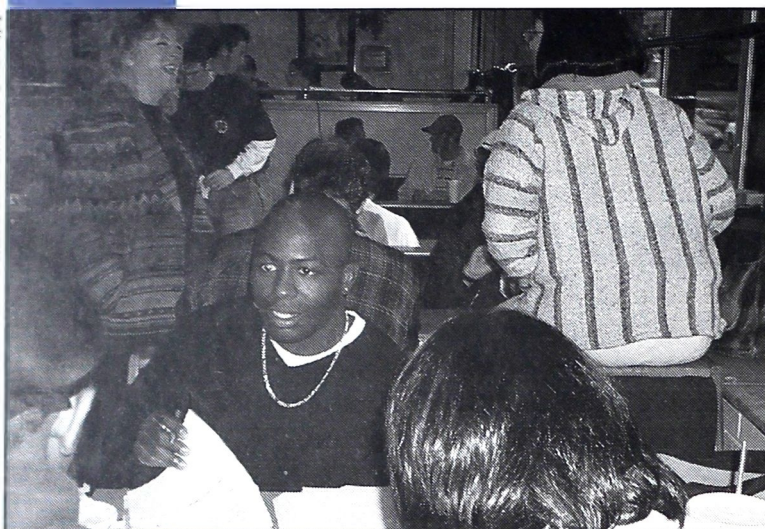
In the past, the team played at Rader Park.

Not only will there be a softball field, but "there will be a baseball and wellness center in the plans within the next year or two," said Brian Adler, director of public information.

PHOTO BY GREG ROGERS



A farm field north of the university will soon be an athletic complex.



The effects of increased enrollment are evident when cold weather forces students into the Student Union. The Grill overflows with students getting a quick bite to eat.

Residence halls get crowded

By ADRIENNE WEAVER
CONTRIBUTING WRITER

Southwestern's increase of freshmen this year means an increase of students living on campus. As of Aug. 26, there were 1,072 people living on campus.

Southwestern residence halls have a capacity of 1,250 people.

These numbers have not been this high since 1992, when 1,191 students lived on campus. At the time, Southwestern had six residence halls. Stewart, Oklahoma, and Rogers were female dorms, and Neff, Parker, and Jefferson were male dorms.

In the fall of 1997, only 801 students lived on campus. That was the year Parker Hall was closed.

"It would take a lot of demand for it to reopen," said Marvin Schoenecke, director of housing.

Southwestern is looking into housing alternatives, such as the construction of apartment-style housing.

Enrollment rises for third year

By APRIL LARSEN
CONTRIBUTING WRITER

A large freshman class and slow economy increased the total number of students enrolled at

both Southwestern campuses to 5,135.

The large number at both campuses is the biggest since 1994, when enrollment was 5,226. The only other time the enrollment was above 5,000 was in 1998, with 5,127 students.

total number of students

2002 - 5,135	1998 - 5,127
2001 - 4,956	1997 - 4,945
2000 - 4,915	1996 - 4,984
1999 - 4,903	1995 - 5,083

Freshman numbers jump

By ERIKA McDANIEL
CONTRIBUTING WRITER

The 945 freshmen who enrolled at Southwestern this fall is a 10 percent increase from the 857 who enrolled for 2001.

According to Todd Boyd, director of high school and college relations, the school not only expected the increase, it anticipates more increases over the next few semesters.

Boyd believes that location is the key reason so many freshmen are choosing to attend small regional schools instead of larger universities.

"I think proximity, being close to home, plays a big part," Boyd said. "After 9/11, kids aren't looking to go away to school."

Marketing **SWOSU**

University takes aggressive approach to promotion

By JENNIFER BRADFORD
CONTRIBUTING WRITER

Online polls, surveys in freshman orientation classes and higher profile ads — these are part of Southwestern's new advertising campaign. SWOSU has hired Brainworks, Inc., an advertising company based in Edmond, to develop the new campaign.

The campaign will not be very differ-

ent from the school's current plan; it will merely enhance and update it.

"I would say there will be some tweaking to some of the things we've been doing plus adding new ideas," said Brian Adler, director of public information.

The new ad campaign should be beneficial to the school. "We think it will be very good for Southwestern," Adler said. "It's kind of exciting really."

Commercial airs on television stations statewide

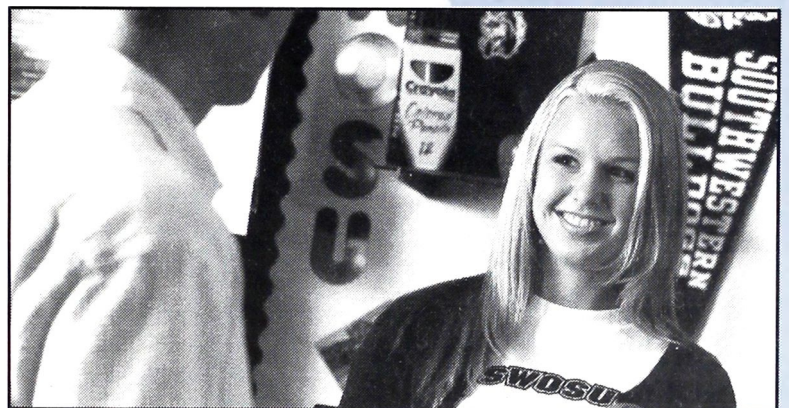
By JENNIFER BRADFORD
CONTRIBUTING WRITER

A promotional television commercial has been airing on stations across Oklahoma since October.

The 30-second spot was shot under the supervision of Brainworks, the marketing firm hired by the university. The new commercial will feature the slogan, "The Focus is You."

The commercial also features many students. "The students who participated did a great job. The filming crew was very impressed with the students and everything at Southwestern," said Brian Adler, director of public information.

The ad will air in the metro area, as



well as western Oklahoma, through next year.

The TV ad will be in conjunction with a new radio spot.

"We just want to get the SWOSU name out there," Adler said.

Student designs spirit logo

A new look for the athletic logo will add to the many changes on campus.

The marketing committee chose a design by Kyle Wright, a senior graphic design major from Weatherford.

"The bulldog itself can be divided into

five separate parts," Wright said.

Kyle's design won a vote on the Southwestern homepage where students picked the logo they liked best.



Professor finishes OKC mural of hope

By KENDRA KIDD
CONTRIBUTING WRITER

Lee Shortridge, assistant professor of art, recently completed a project of epic proportion and profound meaning, called "Allegories of Redemption."

"Allegories of Redemption" is located at 853 Robert S. Kerr Ave. in downtown Oklahoma City. The mural measures over 150 feet in length, 11 feet in height, and weighs over 15,000 pounds.

The intention of the mural was to memorialize the April 19, 1995, bombing of the Murrah Building. Sept 11, 2002 brought a new layer of meaning.

"There was a greater sense of urgency to get the mural up before the one year anniversary of the World Trade Center bombing," Shortridge said.

"The real inspiration was an image of hope for the survivors, families, and the community at large, to reach out to them and let them know that there is light in the dark."

"Allegories" depicts 27 human figures of different race, age, and gender. The figures are moving from

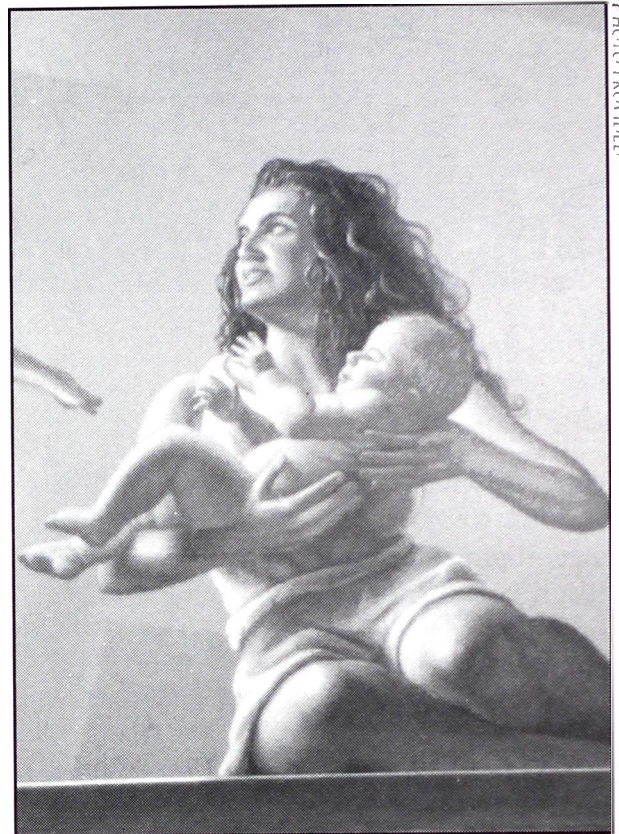


PHOTO PROVIDED

An image imitating the famous picture of a firefighter holding baby Bailey Almon is one of many moving images included on the mural art professor Lee Shortridge helped create.

darkness into light.

"The children in the center of the design is to reference the children that were lost in the Murrah tragedy and to show the family relationships that were also affected," Shortridge said.

"The mural not only shows respect for the Oklahoma City victims but also the New York victims."

Food court will offer fast food options

By ADRIENNE WEAVER
CONTRIBUTING WRITER

Would you like fries with that?

Those may be the words students will be hearing as soon as January, and you won't have to hear those words from a drive-thru. There are plans in the making for a Food Court on campus. It will be located

inside the Student Union Grill, and it will include different choices. At the time, those choices have not been made, according to Duncan Taylor, director of auxiliary services.

Students can rest easy knowing their meal tickets will be honored.

Taylor said the students will not have to pay extra for the court. "This project is included in the school budget."

Moore student named Miss Southwestern

By JON OWENS
CONTRIBUTING WRITER

Junior music education major Mindy Briggs says she lives in a dream world as Miss Southwestern, a title she won on Oct. 26.

"It was thrilling to win the pageant. I thought the entire night that if I took the crown off my head, I was going to wake up from someone else's dream."

Briggs is a graduate of Moore High School, where she was active in the music program. She also was in the All-State choir. She now explores her love for music in the collegiate atmosphere.

"My high school choral director graduated from here. I was also encouraged by the vocal professors and was offered a generous scholarship, so how could I not come to Southwestern?"

Briggs is involved in Chamber Choir, Southwestern Singers and the Choral Oklahoma Music Educators Association. She also takes dance lessons at Kendi's Studio.

Briggs believes music should not be cut out of a school's curriculum. "Music benefits students. I hope to go directly into teaching when I graduate," she said.

Briggs enjoys going to movies, concerts and recitals, as well as visiting her boyfriend in West Point, N.Y. She also goes home most weekends to attend First United Methodist Church of Moore.



PHOTO BY PUBLIC INFO STAFF

Malinda Briggs (middle) of Moore won the title of Miss Southwestern 2003 at the pageant. Briggs, who won a \$2,100 scholarship and \$1,000 cash expense award, will represent SWOSU at the 2003 Miss Oklahoma Pageant in Tulsa. Briggs also won the talent competition. Other finalists were (from left): Jylian Garrison, Weatherford, third runnerup and most ads sold award; Amy Kilhoffer, Elk City, first runnerup and winner of the swimsuit award and the peer respect/leadership award; Chelsea Dunn, Enid, second runnerup; and Brooklynn Miller, Leedey, fourth runnerup.



PHOTO BY NINA KELSO

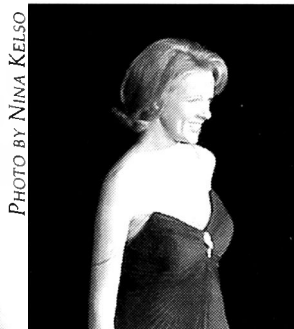


PHOTO BY NINA KELSO

Alison Mainers, Miss Southwestern 2002, handed over her crown in the pageant. Mainers represented Southwestern well, placing as first runner-up in the Miss Oklahoma pageant.



PHOTO BY NINA KELSO

Melinda Briggs performs her solo for the talent competition.

Southwestern faculty receive grants

Two grants exceed \$300,000

By PUBLIC INFORMATION STAFF

Southwestern Oklahoma State University has received approval of grants, contracts and cooperative agreements totaling over \$1.1 million.

Anita Blankenship, director of sponsored programs at SWOSU, said the awards have been received from various sources.

The largest awards are \$300,000 plus projects from the Veterans Administration and the U.S. Department of Education. The VA contract of \$386,232 supports contemporary pharmacy services while providing educational and research opportunities for pharmacy students in the pharmaceutical care clinic area. Principal investigators of the contract are **Dr. David Bergman and Dr. Dennis Thompson**.

A \$360,358 grant from the U.S. Department of Education will support the Upward Bound program at SWOSU. The program is designed to encourage first generation, economically disadvantaged high school students to meet the academic and social challenges of higher education. Principal investigator is **LouAnn Largent**.

Other large amount awards include:

.....\$107,482 cooperative agreement with the Oklahoma Commission for Teacher Preparation to support professional development training of K-8 teachers in hands-on, inquiry-based science curriculum modules and help teachers provide students with the highest quality of science instruction available. Principal investigator is **Dr. Robbie McCarty**.

.....\$100,000 grant from the Oklahoma State Regents for Higher Education to

support a three-year study designed to research the biomass resources in the area and the feasibility of bringing a biomass industry to western Oklahoma. The principal investigator of the grant is **Dr. Marvin Hankins**.

.....\$35,000 grant from the U.S. Department of Agriculture to support the cost for participants of the residential program for youth housed as part of the university's Foss Lake and Ghost Mound Adventure Programs. The principal investigator of the grant is **Debbi McFarlin**.

.....\$34,000 grant from the U.S. Department of Commerce and \$10,000 grant from Western Technology Center to support a manufacturing extension agent who works with existing small to medium sized manufacturers to improve the manufacturers' ability to compete in the international market place. The principal investigator of the grants is **Dr. Marvin Hankins**.

.....\$27,027 grant from the Harris Foundation to support a summer science camp to encourage underrepresented groups to pursue careers in the engineering, mathematics, science and technology fields. The principal investigator of the grant is **Dr. Blake Sonobe**.

.....\$24,284 cooperative agreement from the National Science Foundation to support efforts to recruit minority students to pursue degrees in the science, mathematics, engineering and technology fields. The principal investigators are **Dr. Vilas Prabhu and Dr. Brian Campbell**.

.....\$6,058 grant from Powerade-Coca Cola North America Group to support the enhancement of the Health, Physical Education and Recreation Department programs through the donation of miscellaneous supplies. The principal investigator of the grant is **Ron Walker**.

Provost hooks big one at Crowder

By PUBLIC INFORMATION STAFF

Southwestern Provost Bet Becker recently took advantage of the good fishing at Crowder Lake.

Crowder Lake, located just south of Weatherford, is known as one of the best bass fishing lakes in Oklahoma and is designated as a trophy bass lake by the Oklahoma Department of Wildlife Conservation.

Becker caught a 4.75 pound black bass.

Crowder Lake is operated by the university and is open to the public. Gates open each morning at 6 a.m.



Provost Bet Becker shows off her 4.75 pound black bass.

Klaassen elected

By PUBLIC INFORMATION
STAFF

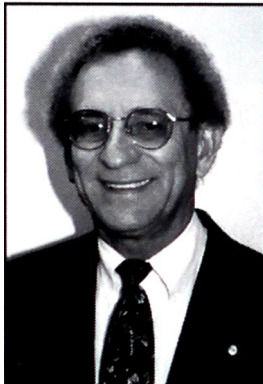
Bob Klaassen, registrar at Southwestern Oklahoma State University, was recently elected treasurer of the 13-state Western Association of Veteran Education Specialists (WAVES).

Klaassen also recently represented SWOSU at the Phi Delta Kappa district conference in Tulsa.

The purpose of the WAVES organization is to serve the needs of veterans receiving educational benefits through the Veterans Administration regional processing center in Muskogee.

Klaassen has been involved in WAVES since its inception seven years ago.

Around 140 people attended the PDK conference in late October. PDK is a professional association for men and women in education.



Bob Klaassen

Wireless network expands

By JENNIFER BRADFORD
CONTRIBUTING WRITER

A wireless network for internet access has been installed in various buildings across campus.

This new network allows students to access the web without using the dial-up connections. Students with laptops which house the proper requirements can now get online in Rogers, Jefferson, and Oklahoma residence halls, as well as the Stafford building and Al Harris Library.

"It's like a radio transmitter, only with the Internet. As long as people have the proper requirements, they have access," said Mark Engleman, information technology services director.

Students who do not have a compatible computer will soon be able to check out one of five equipped laptops from the Al Harris Library.

The laptops cannot leave the library and are available on a first come, first serve basis with a loan period of two hours.

Regents chair Renfro ready to lead higher education through lean times

By JOEL KENDALL
CONTRIBUTING WRITER

"We're up to it."

That's Carl Renfro's optimistic approach to funding higher education in Oklahoma's struggling economy.

Renfro, of Ponca City, was named chairman of the Oklahoma State Regents for Higher Education for 2002-2003.

His main task will be to deal with more shortfalls in state funding for higher education. While optimistic, he's also realistic.

"It is up to all of us to tighten our belts," Renfro said. "It is a tremendous challenge. The challenge is to provide quality education on a reduced budget."

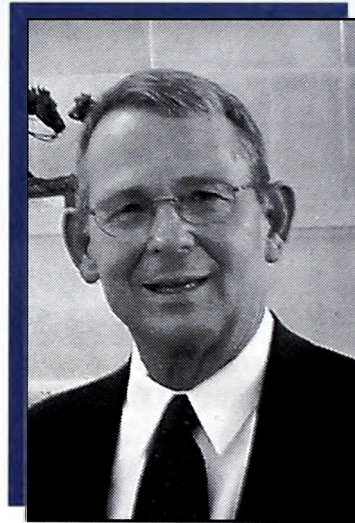
Renfro says one misconception is that this shortfall is a continuing trend. The amount allocated to higher education has been steadily increasing since Renfro gained a seat on the State Regents in 1995.

"Higher education has received significant increases in funding in the past seven or eight years," he said. "It's just that the funding was so far behind. We have to continue to convince the legislature how important education is to the state."

Renfro says higher education needs to trim any excess to make it through the tough times.

"Hopefully, the economy will improve in the next two years. But it's going to be tough for a few years," he said.

Renfro said the system will get



Carl R. Renfro

sound leadership with its new chancellor, Paul Risser. Renfro, in one of his first tasks as Regents chairman, led a national search to replace Hans Brisch, who is retiring. The regents chose Risser, cur-

rently the president of Oregon State, and offered him a four-year contract on Nov. 11.

"At the time he was president of Oregon State, Oregon was undergoing massive budget cuts similar to ours. In spite of that, he proved to be quite successful," Renfro said. "It will be like we never missed a step."

Risser is originally from Blackwell and taught at the University of Oklahoma for 14 years. Renfro said Risser has many qualities needed for this situation.

"We sought input from the legislature, presidents of universities, common education, vocational education – basically from every single stakeholder to determine what they would like to see in a chancellor," he said. "Chancellor Risser without a question stood out among all those candidates."

Renfro is chairman of the board and chief executive officer for Pioneer Bank and Trust in Ponca City and is director of

the Bank of Nichols Hills in Oklahoma City. He received his bachelor's in finance from the University of Missouri at Kansas City.

His many civic leadership activities include Kiwanis Club, Chamber of Commerce Industrial Foundation, Marland Estate Foundation and St.

Joseph Medical Foundation.

He is also involved with educational pursuits, from founding the Ponca City School Foundation to creating the Friends of Education to working closely with Northern Oklahoma College in Tonkawa.

"I've always had a

real interest in education in general," Renfro said. "I realize that's the engine that drives the economy and a successful business enterprise."

With the chancellor search over, Renfro can focus on the budget and other tasks of the regents. He has non-budget goals to seek, including improving the number of college degree holders in the state.

The first step to that goal is to get students in college and keep them there through retention.

"We're losing so many students in that first year. We need to make sure we properly mentor incoming freshman with other students and faculty," he said. "At all of our schools, enrollments are at historical highs. We've just got to

keep the new students."

Once the students get degrees, they need to find jobs in Oklahoma, said Renfro, who is a backer of Brain Gain 2010, an initiative to make the state attractive to graduates.

"It's up to us in our legislature and new government to make sure this is a business-friendly state. We need major reform on workers' compensation. We need tax incentives to attract the right type of businesses," he said. "If we're graduating students with the right degrees, that will provide a steady stream of employees."

Renfro is a supporter of innovative ways to provide education for people all over the state. An example he points to is a community/business partnership in Ponca City. Conoco provides vacant rooms for classrooms, and OneNet transmits courses for people seeking associate, undergraduate and graduate courses without having to travel.

"It is a super joint effort," Renfro says of the test site, which is in its third year.

Another way to reach students is through distance education.

"Certainly the wave of the future is to train our professors, staff and administrators to be able to teach and offer courses via interactive television or the internet."

But right now, Renfro will tackle the higher education budget woes. He is committed to finding ways to save money without hurting institutions' missions.

"We cannot take away from offering proper and quality education."

Hays: Southwestern dealing with more cuts

By JILL WEBER
CONTRIBUTING WRITER

Budgets for all state agencies are being reduced since revenue projected for the state has fallen short. That is causing Southwestern to make some middle-of-the-year adjustments, according to President Dr. John Hays.

At a recent Board of Regents meeting, Hays presented Southwestern's plan to adjust for the shortfall. Other universities will actually require unpaid furloughs for some or all employees at the end of the semester.

The average budget cut for the state was around 4 percent. For Southwestern, this meant a budget cut of about \$925,000.

Fortunately, according to Hays, the university will not have to suffer the total reduction since enrollment is up, which brought about an increase in tuition revenue.

"The budget reduction does hurt," Hays said. "Now we have to serve the students with fewer services."

"We have to be prepared for the worst, but hope for the best," Hays said.

Dawg Dates 2003

**J
a
n**

9 Classwork begins

Feb

6-7 SWOSU Jazz Festival
15 Athletic Hall of Fame banquet,
Student Union, noon
18 *Dr. Peter Phillips, "What the Press
Forgets to Tell You" - Fine Arts
Center - 7:30 p.m.

**M
a
r**

14-24 Spring Break
26-29 Theatre production, "Colours: A Musical
Allegory," Old Science Auditorium, 7:30
nightly

April

10-12 SWOSU Rodeo
13 *The Saint Louis Brass Quintet
Sunday concert -- Fine Arts Center
-- 7:30 p.m.

**M
a
y**

10 Convocation, Milam Stadium, 10 a.m.

* Panorama Event

Upcoming events
Parent's Day, Sept. 13, 2003
Homecoming, Oct. 24-25, 2003

Sayre campus extends SWOSU influence

By JILL WEBER
CONTRIBUTING WRITER

Sixty miles west of Weatherford, campus life exists for Southwestern students.

"By extending the campus to Sayre, we can offer education opportunities through SWOSU to citizens of western Oklahoma," said Dr. Jim James, dean of the Sayre campus.

SWOSU-Sayre has about 500 students right now, said James. "About 72 percent of students who enroll are female. This has climbed from 67 percent in 1991."

Close to 63 percent of students enrolled at Sayre are from Beckham County,

and the largest age group is 18-20 years old.

"We are working on aerobics and other activities for citizens in the community right now that will be held on campus," James said.

Southwestern at Sayre was founded as Sayre Junior College in 1938 under legislative authorization which permitted public high schools to add a 13th and 14th year of study to their curricula.

America's entry into World War II decimated the ranks of both faculty and students. Consequently, the college closed during the war years, but reopened in 1946. In July 1987, by act of the Oklahoma legislature, Sayre Junior College was merged with Southwestern.

Lindley heats up

It was one hot summer in 2002 for senior recreation leadership major **Travis Lindley**, who was in Colorado fighting fires.

Lindley has been a certified firefighter for four years. He put his training to the test as he battled over 70,000 acres of out-of-control, blazing forest.

Lindley, part of an Anadarko emergency contract crew, got the call from the federal government to help out, and on May 18 the engine crew left their homes in Oklahoma hoping to save some in Colorado. They were sent to Missionary Ridge, the second largest Colorado fire of the summer.

"It was a gratifying experience," he said. "I had fought fires and made saves before. This time, though, it felt like I had made someone feel better. I had actually done something, not just make some materialistic save."

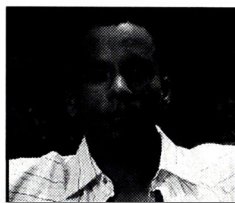
Bullrider called a "hunk"

In November, Southwestern student and professional bullrider **Lee Akins** was chosen as Oklahoma's representative for "Hottest Hunk in the US" by *Cosmo* magazine.

"They said I was unique, intelligent, good-looking and I had a lot going for me," Akins said. "On top of that, I'm a cowboy."

Akins, 28, served on Southwestern's rodeo team. His bullriding has taken him to the last Olympics and the Professional Bull Riders Tour. Akins finished school in December with a degree in biology.

"When they called to tell me that I was picked, I thought they were kidding at first. They asked me if I was excited and I said, 'Cosmo?'"



Lee Akins

Two social fraternities start up

In Spring 1998, the last social fraternity house shut down at Southwestern. But this fall, two fraternities are seeking to become established.

The **Kappa Sigma Fraternity** is looking for 50 men to be charter members. **Kappa Sigma** is one of the largest and strongest fraternities in North America.

Drew Price and Matt Pierce are the co-founders of the new social fraternity, **Chi Theta**. **Chi Theta's** focus is to "have fun and meet new people."

Kudos to...

Student officers of Southwestern's Society of Manufacturing Engineers Student Chapter placed high in the Society's Region 11 Chapter Officers Conference in Austin, Texas, Nov. 1 - 3. The SME students won the Outstanding Student Chapter Award. The students also won top honors in the Student Display Award and the Oral Presentation Award. Seven students from Southwestern's program were recognized with over \$3,000 dollars in scholarships, including Ryan Bell, who won the Charles A. Templeton Scholarship.

SWOSU's speech and debate team garnered several trophies at its season-opening tournament, held October 12-13 in Winfield, Kansas. Southwestern took home the fifth-place sweepstakes award in a tournament with teams from Kansas, Missouri, Oklahoma and Michigan. Shane Farmer won the championship in persuasive speaking with his speech on invasive alien species. Misty Williams took first place in dramatic interpretation and finished third in prose. Jessica Oxford's speech on prison education placed fifth.

Joanne Gonzalez, a senior biology/chemistry major at Southwestern, attended the "Reaching Beyond" 2002 Student Research Conference, sponsored by The New Mexico Alliance for Minority Participation and Raytheon Missile Systems Company. She received an award for the research that she has been doing.

Steve Bond of Merritt attended a 2002 Agriculture Future of America Leaders Conference in Kansas City, Mo. The Kerr Foundation, Inc. and AFA partnered to provide rural youth professional and career development experiences at the conference. Eleven college students representing rural communities throughout Oklahoma participated in the conference.

Unclaimed diplomas need to be picked up

Each year, more and more unclaimed diplomas stack up in the registrar's office. Please look through this list. If you are on it, or you know someone on it, please call Joyce Tegtmeyer in the registrar's office at (580) 774-3086

YEAR	NAME	DEGREE	YEAR	NAME	DEGREE
1966	Lousch, Richard Wayne	Master of Teaching	1978	Dennis, Marie O. Matthews Rutherford, Jimmy Allen Whitley, Sandra Louise	BS in Ed Master of Ed Master of Ed
1969	Holman, Shirley Aaron Caldwell	BA in Ed	1979	Brown, Clark Travis Jones, Janice S. Graves Travis, Ginger J. Kane Verhines, Steve E.	BS in Pharmacy Master of Ed Master of Ed BS in Ed
1971	Beavers, Pamela Beth Compston, Monte L. Copple, Oral Michael Harder, Nolita Jo Igo, Charles Roger Maloy, Loretta Ann Horrell	BS BA in Ed BS in Pharmacy BS in Ed BA in Ed BS in Ed	1980	Hansen, Florence C. Haskell Stephens, Michael Alan Taylor, Virgil Everett Woolbright, Dianna Beth Stout	Master of Ed BS Master of Ed BS in Ed
1972	Fleming, Richard Milam Lyon, John Clark	BS in Ed BA	1981	Balentine, Janie L. Stacy Tran, Hong Bich	Master of Ed BS in Pharmacy
1973	Hodges, Dale L. Johnson, Gerald James Monroe, John Alton Sanders, Perry Ray Taylor, Tommy Thurman White, Melba S.	Master of Ed BS BA BS Master of Ed Master of Ed	1983	Adams, Tom P.	BS
1974	Crow, Kenneth Wayne Fitch, Donna Sue Hunter, Margaret Ann Holsapple Marcy, Catherine Kay Martin, Jr., Lucian H. Monts, Isaac Lewis Rhoads, Elizabeth Kay Wallace Tande, Gary Otto Williams, Frances Ellen	BS BS in Ed Master of Ed BS in Ed BS in Pharmacy Master of Ed BS in Ed BME Master of Ed	1984	Charles, Frances N. Fincher, LaRonda	BS BS
1975	Blake, Ross D. Carter, Teresa Annelle Barnard Williams, Ronald I. Winfield, Marilyn Kay Pilkington Wittrock, Joseph F.	BS in Ed BS BS in Ed BS BS	1985	Stearman, Michael S. Wilhelm, Terry Lynn	BS in Ed Master of Ed
1976	Coleman, Homer W. Douglas, Gwendolyn K. Mustain Johnson, Joyce C. Ogletree Rhea, Barbara Louise Bowers	BS BS in Ed Master of Ed BA	1987	Pittman, Roger Alan	BA
1977	Barrow, Mark Kevin Hall, Charles Wayne Johannesmeyer, Patricia Weitz, Gail Robertson Williams, Kenneth Wade	BS Master of Ed Master of Ed BA in Ed BS	1988	Crockett, Joe David Reynolds, Christy Diane	BS BS in Ed
			1990	Hill, Cary Christian Hines, Billy Lloyd	BS Master of Ed
			1991	Bolf, Jeffrey Lynn	BS
			1992	Baccus, Rodney L. Morrison, Carrie Michelle Musick, Carla Jane Reynolds, Christopher Brian Toppah, Kathleen L. Bearbow	BS in Nursing BS BS in Ed BS BS in Med Records
			1993	Elliott, Naomi Nmano Kourt, Kevin Brent McGee, Kevin Dale	BS in Pharmacy BS in Pharmacy BS in Eng Tech
			1994	Millican, Meridith Michelle Poindexter, Russell Brent Washington, Alrick Ramon	BA BA in Ed BS

More Diplomas

YEAR	NAME	DEGREE
1995	Barney, Robert K.	BA
	Cabiness, Rodney Dale	BS
	Carpenter, Brenda	Master of Ed
	Collins, Lillian Ray	BS in Ed
	Grigg, Janet Gail	Master of Ed
	Halverson, Tana	BA
	Hanks, Michael Paul	BA
	Hartman, George	BS
	Hartman, John H.	BS
	Hightower, Brian Lee	BS in Ed
	Krohmer, Michael Ray	Bach of Gen Tech
	Martinez, Jose' A.	BS
	Mathews, James Marian	BS
	Miller, Craig Gale	Bach of Rec
1996	Becker, Brandy Sue	BS
	Boyer, Tammy Kim	BS
	Brown, Michael L.	BS
	Clothier, Paula Sue	BS
	Crawford, Anita Sue Tyson	BS
	Dunham, Stephanie Runia	BS
	Erwin, Kimberly	Master of Ed
	Hightower, Brian Lee	BS
	Jenks, Amy Jo	BS
	Lewallen, Heather Anne	BS in Ed
	Lewis, Robert Howard	BS
	Morris, Marc R.	BS in Ed
	Nichols, Nicole Lea	BS in Ed
	Smith, Valori Ann	BS
	Wood, William Keith	BS in Ed
1997	Bauldrige, Lori Parham	BS in Ed
	Cole, Robert Garth	BS
	Garrett, Stephanie DeAnn	BS
	Nguyen, Jimmy Ngoc	BS in Pharmacy
	Oren, Dodie Jane	BS
	Pearson, Robert Anthony	Master of Ed
	Richards, Garfield C.	BS
	Touchstone, Tony Duane	BS
1998	Alexander, Jerome Albert	BBA
	Blackwell, Crystal G.	BS in Ed
	Bryant, Christopher Lynn	BS
	Gattenby, Kenneth Charles	BS in Pharmacy
	Rogers, Crystal M.	BS in Pharmacy
1999	Stewart, David Wayne	BS
	Alexander, Kristen Rae	BS
	Atchley, Erin Elizabeth	BS in Educ
	Bain, Michael Brent	Master of Ed
	Graham, Sunny Adrienne	BS
	Hicks, James Eugene	BS
	Horton, Brenna Kay	Bach of Bus Adm
	Murray, Cindy G. Lanier	BS in Social Work
	Nguyen, Hieu Huu	BS
	Penner, Tisha Anel	BS in Educ
	Reyes, Esther Diane Tejeda	Master of Ed
	Stearns, Roberta Ann	BS in Nursing
	Walker, Demond Leo	BS

YEAR	NAME	DEGREE
2000	Bay, Donald Wayne	BS
	Ferrell, Toby Marshall	BS in Educ
	Fields, Melanie Jean Wallace	BS in Pharmacy
	Higgins, Kelli Jan White	BS in Educ
	Hissam, Lynda Beth Jackson	Bach of Bus Adm
	Hubbard, Jeffrey Brian	BS
	Penland, Kelly Marie Lang	BS in Nursing
2001	Bare, Ginger Lynn	BS in Educ
	Bartlett, Kourlette Michele	BS
	Bell, Candy Denise	Bach of Music
	Glover, Sheveron Lyle	BBA
	Gonzalez, Martin A.	BS
	Houser, Joshua D.	BBA
	Jenkins, Lloyd James	BS
	Roberts, Gunnar Ray	BBA
	Vargas, Alejandro	BA
	West, April Dawn	BBA
2002	Whitley, Tara Lea Eckert	BBA
	Borror, Holly Lynn	BA
	Gitonga, Ephraim Githinji	BS
	Hall, Amy Dawn Parrish	Master of Educ
	Hall, Rebecca Michelle	BBA
	McNatt, Rhonda Ann	BS in Nursing
	Merrifield, Eric Scott	BS
	Parker, Jeffery	BBA
	Penner, Kyler Ann	BA
	Prifti, Elvis	BBA
	Reynolds, Timothy Bryan	BS
	Roof, Reagan L.	BA in Education
	Shakeel, Syed Farhan	BA
	Stansberry, Brian Justin	BS in Education
	Townsend, Matthew Russell	BS
	Wollison, Della N	BS

Football team wraps up successful 2002 season

By STEPHEN GLOVER
CONTRIBUTING WRITER

The Bulldogs used four turnovers to jump ahead and post a 25-14 win against Eastern New Mexico in the final game of the season at Milam Stadium.

The victory raised Southwestern's final season record to 7-4 (4-2 in conference).

This year was the best season for the Bulldogs since they became a member of NCAA Division II football and they enjoyed their best overall season since 1996.

What's the greatest sports team ever at Southwestern?

Southwestern's sports legacy runs deep. It still boasts the most national championships of any regional university in Oklahoma. But what one team signifies the Bulldog greatness? What team was better than every other team? Instead of us deciding, we want you, the alumnus, the one who went to the games or even played in the games, to tell us who the greatest team was. You can clip this ballot out and send it to Echoes to make your voice heard.

- 1. The 1996 NAIA champion football team.
- 2. The 1982 NAIA champion women's basketball team
- 3. The 1983 NAIA champion women's basketball team.
- 4. The 1985 NAIA champion women's basketball team.
- 5. The 1987 NAIA champion women's basketball team.
- 6. The 1990 NAIA champion women's basketball team.
- 7. The 1985 National champion men's rodeo team.
- 8. The 1992 National champion men's rodeo team.
- 9. The 1993 National champion men's rodeo team.
- 10. The 1999 National championship men's rodeo team.
- 11. The 1988 National champion women's rodeo team.
- 12. The 1994 National champion women's rodeo team.
- 13. Other
(FILL IN
THE SPACE)

Send this ballot to Foundation Office, SWOSU, 100 Campus Drive, Weatherford, OK 73096. The results will be announced in the next edition of Echoes.

Dispatches

The women's rodeo team earned first place honors at Northwestern State's rodeo in November. Southwestern scored 175 points, which was 70 points ahead of second place Northwestern. The women are now first in the Central Plains Region.

The Southwestern men's rodeo team notched a first place win November at Northwestern. The team earned 223.3 points and second place Panhandle State earned 160 points. Through the fall season Southwestern sits atop the region in team points.

The men's soccer team made history when it posted its first Lone Star Conference win ever with a 2-0 win over Northeastern State. The men, under first-year coach Joe Bradley, ended with a 7-9-2 record.

The women's soccer team won more games than its first four seasons combined. The women finished with a 6-11-2 record under coach Joe Bradley, who finished his second year with the women's program..

The men's golf team fired rounds of 294-290 (584) one shot behind West Texas A&M to finish second in the Panhandle State Fall Invitational. Jimmy Thind won medalist honors with rounds of 71-71. Justin Twyman tied for fifth with 74-71.

The Lady Bulldogs finished second in the last tournament of the fall season. The Lady Bulldogs had rounds of 354-341 (695). In the individual race Rebecca Musser and Lyndsay Roberts tied for third with a 165 total.

Thirteen athletes were honored by the Lone Star Conference for academic excellence. Seven members of the soccer team were honored. Katarina Herdova was named to the All-Academic Women's Soccer team. Six others earned a spot on the Commissioner's Honor Roll: Amanda Crabtree, Ivey Rothman, Lia McKinley, Stacy Lee, Tori Skocdopole and Karissa Whalen. Members of the men's soccer team selected to the All-Academic Team: Patrick Byers, Shamus Moore, and Robby Miller. Sophomore center Josh Werth was named to the All-Academic Football Team. The Cross Country team had Jessica Thompson selected to the All-Academic team and Amy Kilhoffer selected to the Commissioner's Honor Roll.

Bond returns to Southwestern as SID

By JILL WEBER
CONTRIBUTING WRITER

After graduating from Broken Bow in 1996, Mike Bond attended Southwestern, where he graduated with a marketing degree in May 2000. Now he is the Sports Information Director, and will be working on his Masters of Education next Spring.

"I was an assistant for a year when I was in college," said Bond.

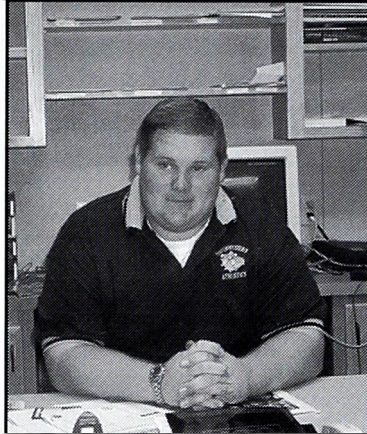
Bond's job consists of overseeing media relations, promoting and marketing Southwestern, compiling statistics for all home events, and media guide production for 10 intercollegiate sports and the men's and women's rodeo teams. Bond is also a member of the College Sports Information Director Association.

"The best thing I like about my job," Bond said, "is being on the inside of the athletic department. The funnest part is being around the athletes all day."

Bond's father and mother both graduated from Southwestern. His father is a pharmacist and his mother is a 1st grade teacher. His sister, Sara, is currently

attending Southwestern and is a member of the golf team.

PHOTO BY DONNITA STEWART



Mike Bond at work

Bond and his wife, Amy, were married last year. She will complete her Business degree from Southwestern this May.

In his spare time, Bond enjoys

playing golf, hunting, fishing, and participating in all sports.

Bond also likes cooking and his favorite thing to make is grilled chicken and pasta. He is a St. Louis Cardinals fan.

"I like what I do," said Bond. "I'd like to keep this job a while and maybe work my way up. Who knows; hopefully maybe one day I can be the Athletic Director."

Teams are gearing up for winter basketball

By SHELBY HIGDON
CONTRIBUTING WRITER

With six All-State recruits and star junior college players to join the veterans, women's basketball coach Shelly Pond says she is "pretty excited," about this year.

Pond spoke of her team very highly and feels it will be "better than the last two years offensively and defensively."

"I look for big things in everyone, and experience will help each person," Pond said.

Men's coach George Hauser has a lot of fresh faces this year and is not quite sure what to expect. He also has some injuries and hopes to have them prepared before the first of the

season.

Hauser says the team is "of unknown quality right now," and believes the recruits will definitely contribute once they learn some things.

The team will feed off of the experienced returning players. Hauser believes the "experienced people have to come in and help immediately."

Some key returnee's this year are DeVon Rice, Arturo Jones, Jarrod Mueggenborg and Semaj Johnson. Also new players like Hassan Trotter and Irving Roland will be big influences.

The teams will have a full slate of games for January through March, including plenty of Saturday afternoon matchups.

Three to be inducted into Athletic Hall of Fame

Southwestern graduates Doyle Bergner, Keith Wiginton, and Dr. Don Mitchell will be inducted into the Southwestern Athletic Hall of Fame during halftime activities of the Southwestern-Central Oklahoma men's basketball game Feb. 15.

The three men will be honored with a reception on Feb. 14 at 7 p.m. At noon on Feb. 15 there will be a luncheon. Tickets for the luncheon can be reserved through the Athletics Office at (580) 774-3068. Tickets are \$10.



Doyle Bergner

Doyle Bergner

Doyle Bergner graduated from Weatherford High School in 1944. After graduation he served his country in World War II. After the war, he came to Southwestern and became a three-year letterman for the Southwestern baseball team. The Bulldogs were conference champions his three years, 1949-51. Bergner received a degree in education from Southwestern in 1951 and began his teaching career at Independence. After a stop in Custer City, Bergner moved back in 1959 to Weatherford and taught and coached until his retirement in 1982.

Bergner's overall baseball record stands at 510-236. He led his team to one state championship. Bergner was named the District One coach of the Year in 1971, 1972, and 1973.

Bergner served as the head basketball coach for 17 years at Independence, Custer City and Weatherford. His overall record included 290 wins and 130 losses. His teams won four district championships and one regional championship and four county championships.

Keith Wiginton

Keith Wiginton was born Dec. 30, 1935, in Altus. He graduated from Friendship High School in 1954. Wiginton was the co-captain of the baseball team his junior year when the team finished third in the nation. In his senior year, the team finished second in the nation. Wiginton was also the captain of the basketball team his senior year. The Bulldogs finished co-champions of the Oklahoma Conference. Wiginton earned a B.S. in Math from Southwestern in 1958.

After graduating from Southwestern, he attended Southwestern Baptist Theological Seminary and earned a Masters of Divinity. Wiginton served as pastor of several Baptist churches. In 1971 he became pastor at First Baptist Church of Altus. He remained at First Baptist Church of Altus for 30 years before retiring in 2001.

Wiginton is married to the former Linda Graybill. They have three daughters Dana, Deana, Stacy and one son-Keith Edwin II.

Don Mitchell

Dr. Don Mitchell is the former Southwestern Oklahoma State University rodeo coach. Mitchell led rodeo teams to six national team titles and 30 Central Plains regional titles. Two squad members-Eric Mouton and Mark Gomes-won World Titles at the National Finals Rodeo and four former athletes won medals in the 2002 Olympics.

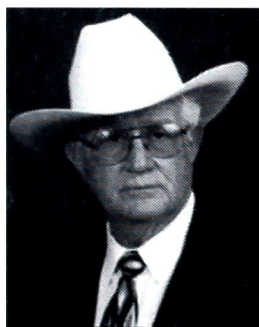
Mitchell became coach of the rodeo teams in 1967 and held that position until his retirement in 2000. He became chairman of the Technology Department in 1980 and served in that capacity until 2000.

Mitchell was born on July 16, 1939, west of Mountain View. He graduated from Mountain View High School in 1957. In 1961 he graduated from Southwestern with a B.S. in education. In 1966 he received his Master's Degree in education. Mitchell earned his doctorate in education administration from Oklahoma State University in 1971.

Mitchell and his wife Thedis have three children. Jack resides in Chickasha, Damon lives in Anadarko and Sonya Messer lives in Minco. Mitchell is currently a full-time rancher.



Keith Wiginton



Dr. Don Mitchell

Go ahead...

Brag

about yourself

Why not? You deserve the recognition. So tell us, and we'll tell everybody.

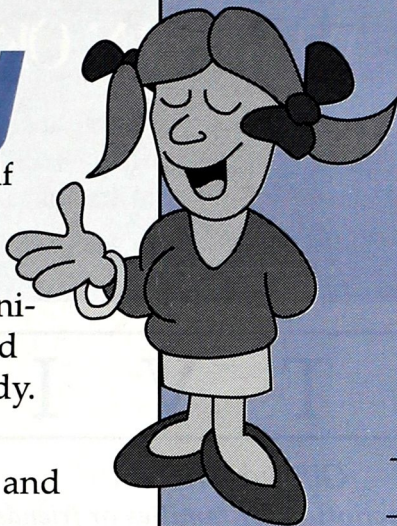
Send information and photos to:

Echoes from the Hill

SWOSU

100 Campus Drive

Weatherford, OK 73096



Name _____

Social Security No. _____

Year of Grad. _____

Address _____

City _____ State _____ Zip _____

Your latest news _____

Join the Alumni Association

SWOSU Alumni Dues

Yearly: \$30

(Jan. 1, 2003-Dec. 31, 2003)

Lifetime single: \$400

Lifetime couple: \$500

Payment options:

Personal or Business check

(payable to *SWOSU Alumni*)

Mastercard or VISA

card # _____

Exp. date _____

Cardholder's signature: _____

Name _____ Social Security No. _____

Address _____

City _____ State _____ Zip _____

Phone _____ Fax _____ e-mail _____

Degree(s) (BS, BA, MS, etc.) _____

Major _____ Graduation year(s) _____

Please send to: SWOSU Alumni Association, SWOSU, 100 Campus Drive, Weatherford, OK 73096

(580) 774-3267 fax: (580) 774-7055

e-mail: jonesk@swosu.edu

www.swosu.edu

Know someone who deserves a nice gift?

WESTVIEW: A JOURNAL OF WESTERN OKLAHOMA

*For just \$10, you get four
issues of the literary journal
to get a subscription, fill
out the form below.*

Don't miss the great work from such authors as Walt McDonald (Vietnam fighter pilot), Robert Cooperman (author of *The Badman and the Lady*) and W.P. Kinsella (of *Field of Dreams* fame).

Don't miss an issue!

W E S T V I E W

MAIL THIS SUBSCRIPTION FORM
ALONG WITH A CHECK
OR MONEY ORDER PAYABLE TO:
WESTVIEW
100 CAMPUS DRIVE
WEATHERFORD, OKLAHOMA 73096

SUBSCRIPTION FORM (PUBLISHED SEMIANNUALLY)

NAME _____

ADDRESS _____

CITY _____ STATE _____ ZIP _____

(CHECK ONE) ☐ \$4/ISSUE

☐ \$10/4 ISSUES



\$20/OUT OF COUNTRY

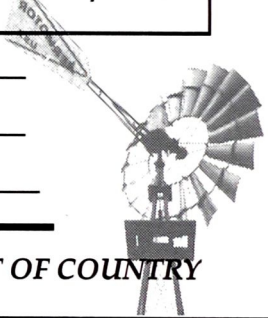
Gift subscription:

*To buy a subscription for families or friends, put the
gift recipient's address in this box. Fill out your address
on the subscription form.*

Name _____

Address _____

City _____ State _____ Zip _____



NABORS SHOE CENTER

Open Monday through Saturday 9 a.m. to 6 p.m.

*Nabor's Shoe
Center supports
Southwestern*

Go Bulldogs!

117 West Main • Weatherford • 772-6224

Wright Wradio



*Listen to our
great stations
Coyote 97.3
Hot Mix 95.5
Oldies 99.3
AM 1590*

*is a proud
supporter of
SWOSH and
all its pursuits*

Want to advertise in Echoes? Call 580-774-3267

SWOSU Alumni Association E1916
100 Campus Drive
Weatherford, OK 73096-3098

Nonprofit Organization
U.S. Postage
PAID
Weatherford, OK 73096
Permit No. 57