



Southwestern Oklahoma State University
SWOSU Digital Commons

SWOSU Yearbooks

Campus Publications & Productions

1929

The Oracle 1929

Southwestern Oklahoma State University

Follow this and additional works at: <https://dc.swosu.edu/yearbooks>

Recommended Citation

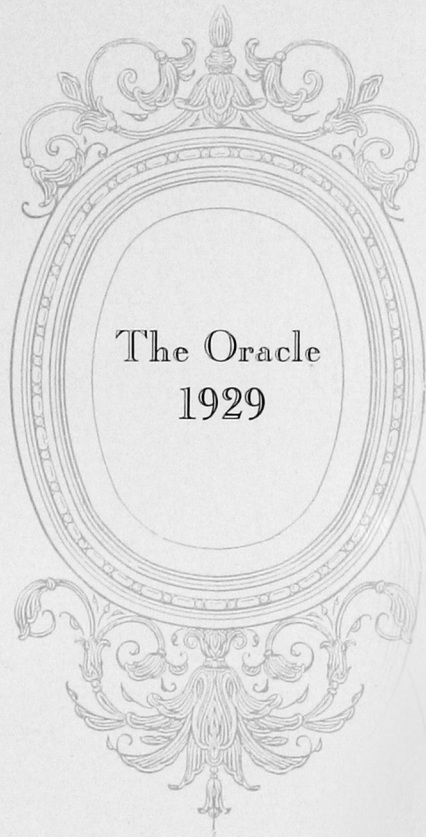
Southwestern Oklahoma State University, "The Oracle 1929" (1929). *SWOSU Yearbooks*.
<https://dc.swosu.edu/yearbooks/26>

This Book is brought to you for free and open access by the Campus Publications & Productions at SWOSU Digital Commons. It has been accepted for inclusion in SWOSU Yearbooks by an authorized administrator of SWOSU Digital Commons. An ADA compliant document is available upon request. For more information, please contact phillip.fitzsimmons@swosu.edu.





This page intentionally left blank.



The Oracle
1929

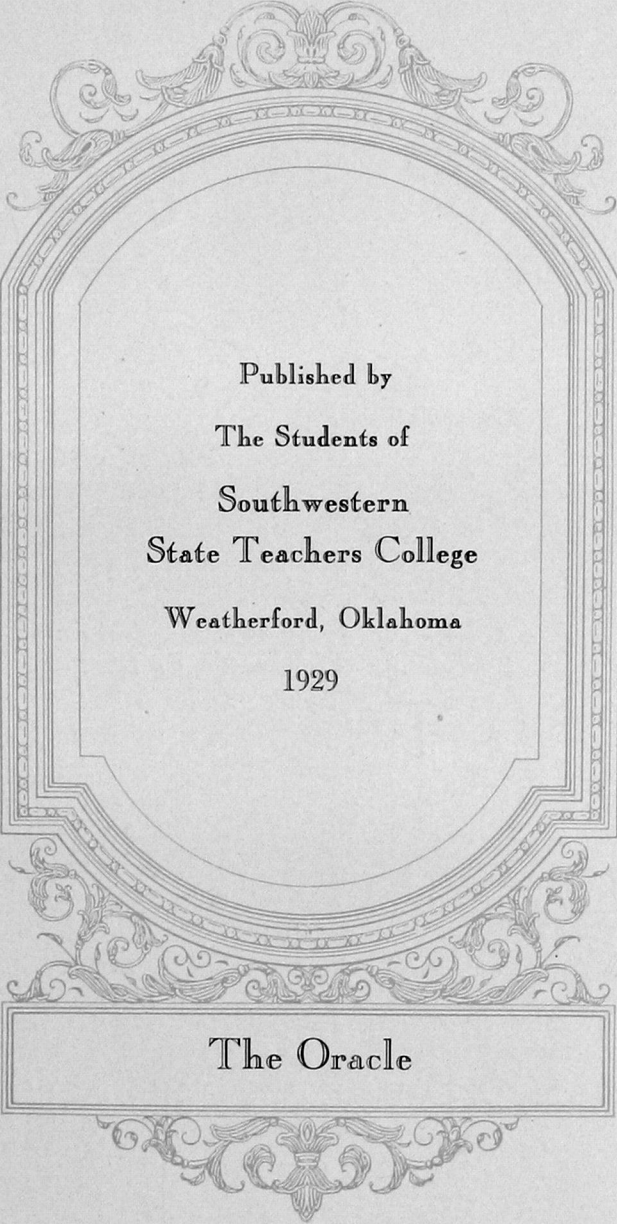
Copyright
1929

CLYDE SHANNON
The Editor

LEE RATCLIFFE
The Manager

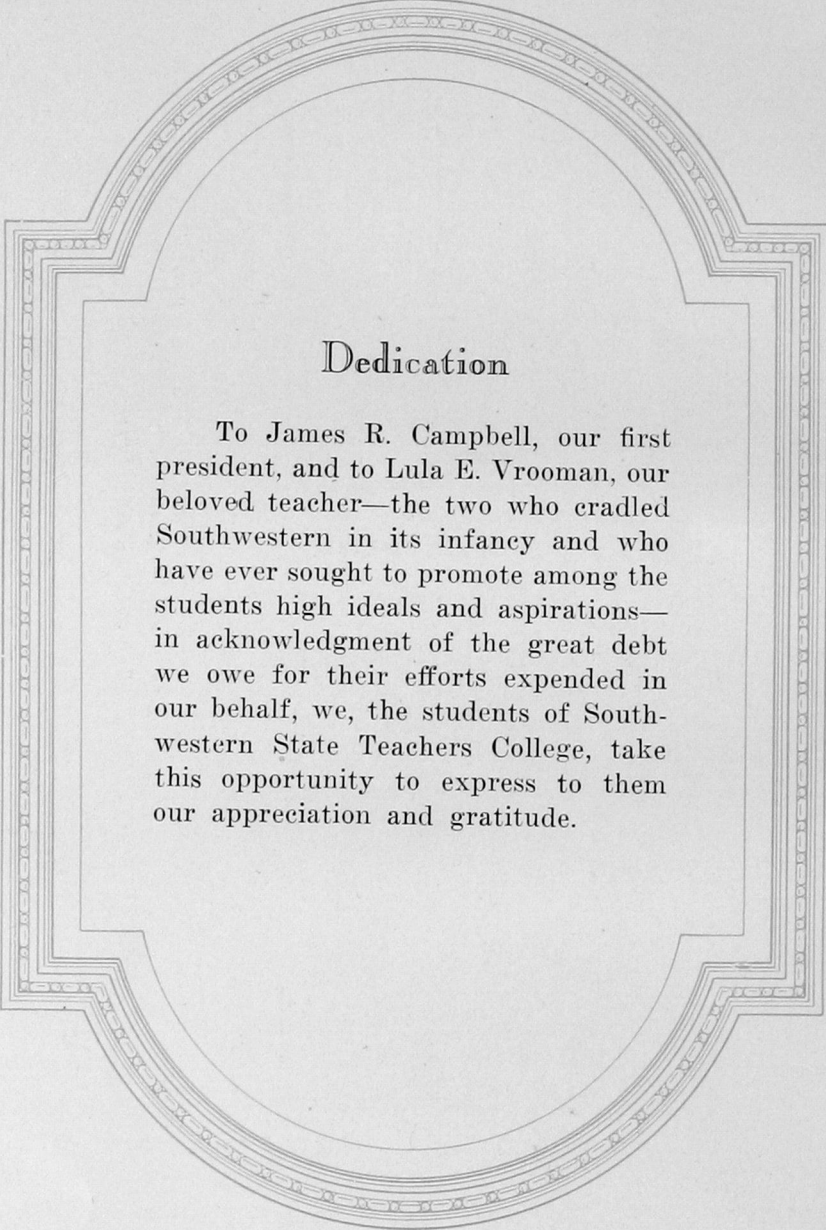
Printed by
The Co-Operative Publishing Company
Guthrie

Engraved by
Southwestern Engraving Company
Tulsa



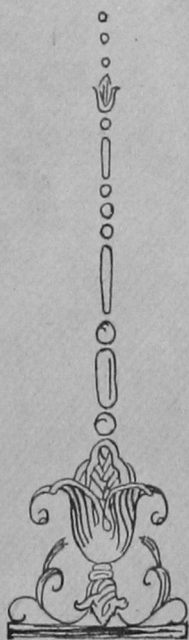
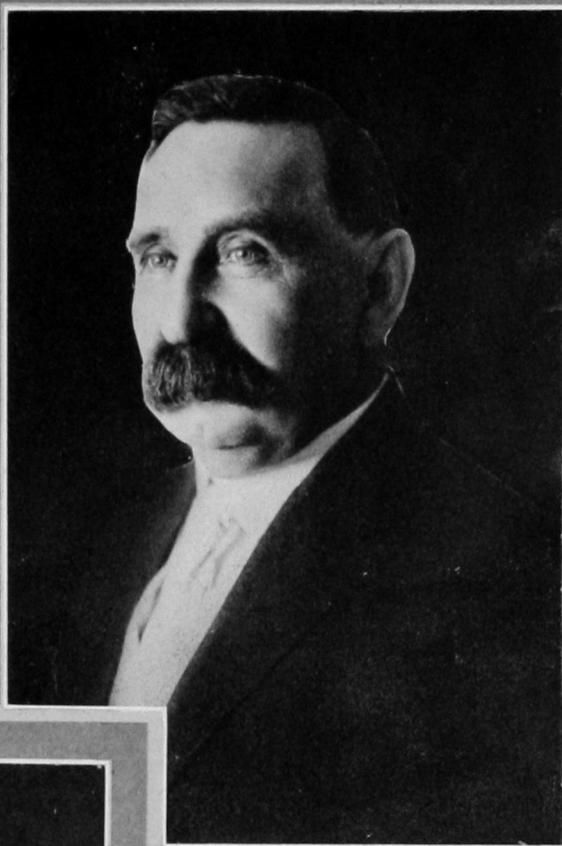
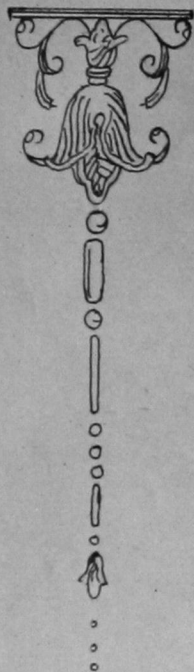
Published by
The Students of
Southwestern
State Teachers College
Weatherford, Oklahoma
1929

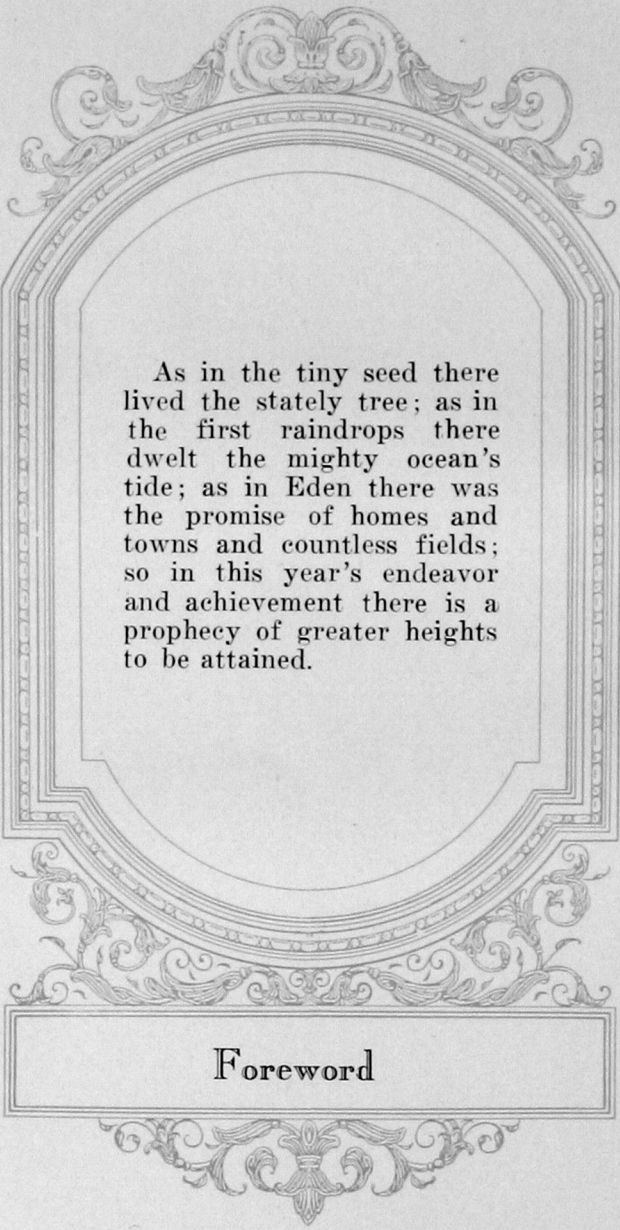
The Oracle



Dedication

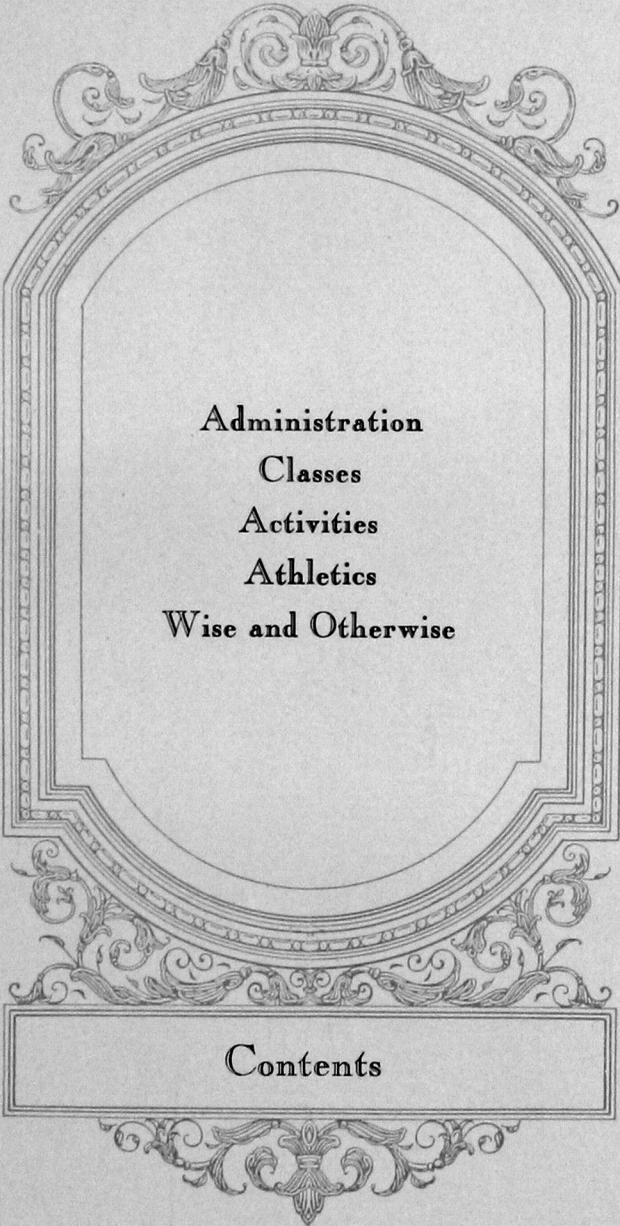
To James R. Campbell, our first president, and to Lula E. Vrooman, our beloved teacher—the two who cradled Southwestern in its infancy and who have ever sought to promote among the students high ideals and aspirations—in acknowledgment of the great debt we owe for their efforts expended in our behalf, we, the students of Southwestern State Teachers College, take this opportunity to express to them our appreciation and gratitude.





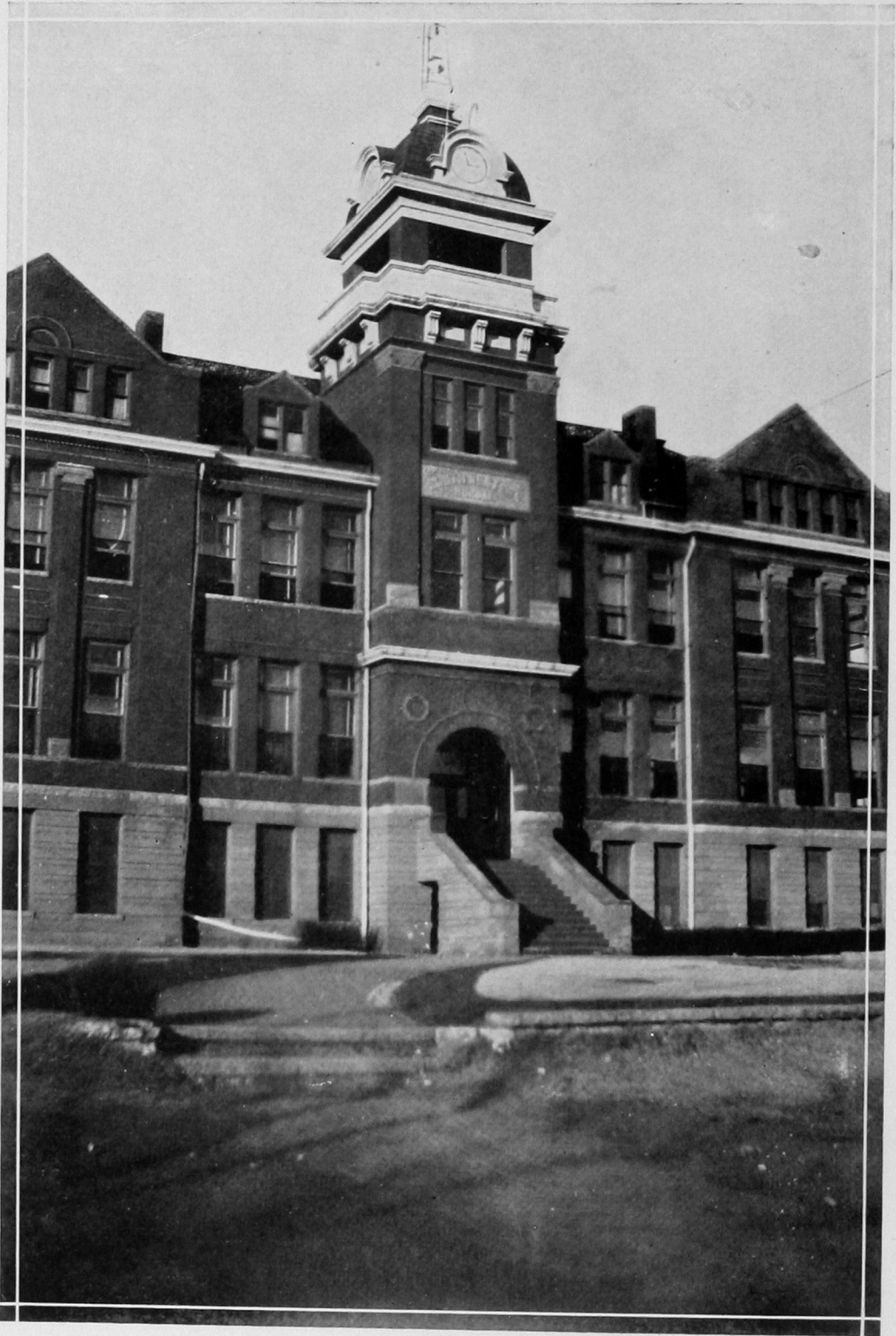
As in the tiny seed there
lived the stately tree; as in
the first raindrops there
dwelt the mighty ocean's
tide; as in Eden there was
the promise of homes and
towns and countless fields;
so in this year's endeavor
and achievement there is a
prophecy of greater heights
to be attained.

Foreword



Administration
Classes
Activities
Athletics
Wise and Otherwise

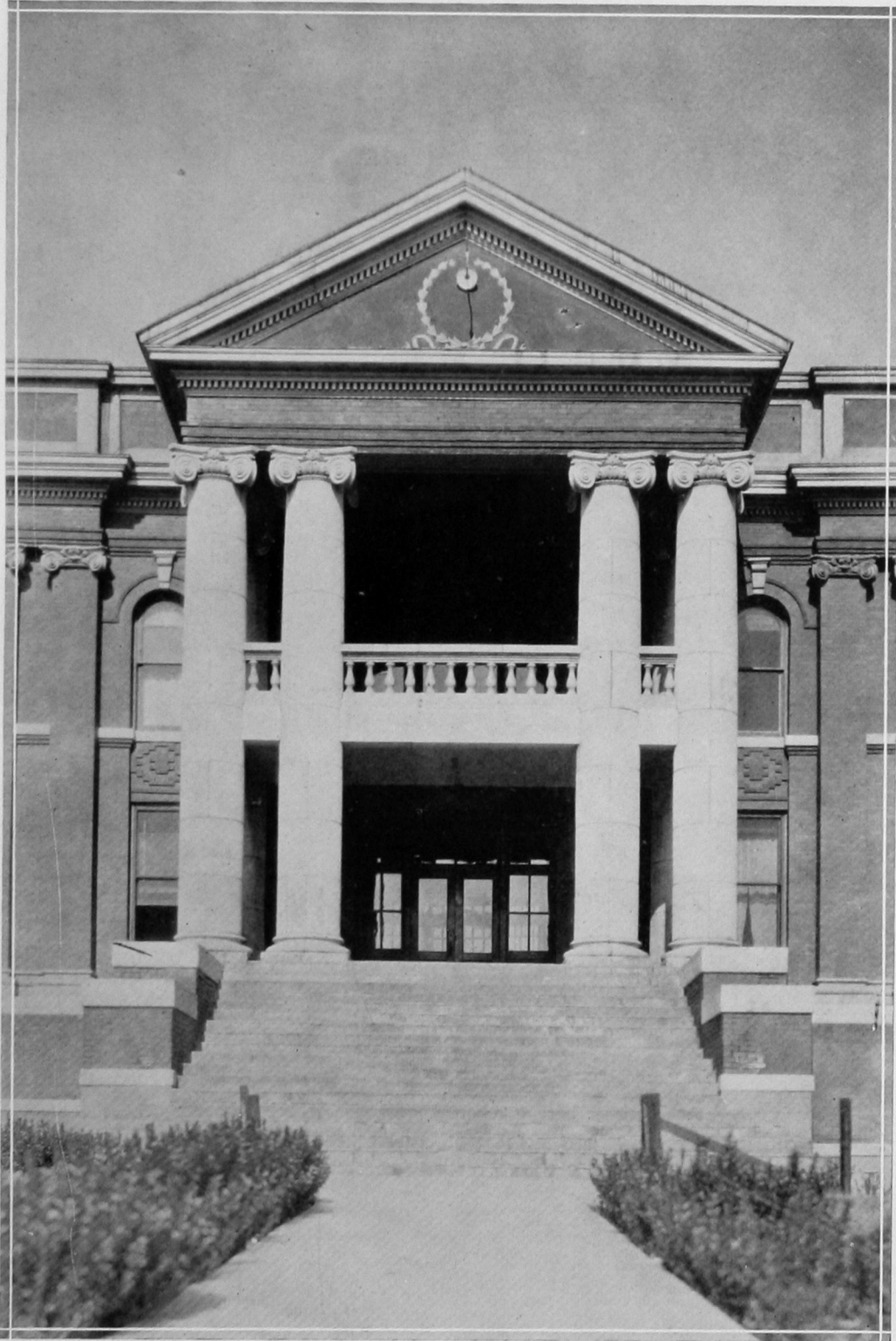
Contents



eight

ADMINISTRATION





SCIENCE HALL

nine





PRESIDENT'S HOME



THE TOWER



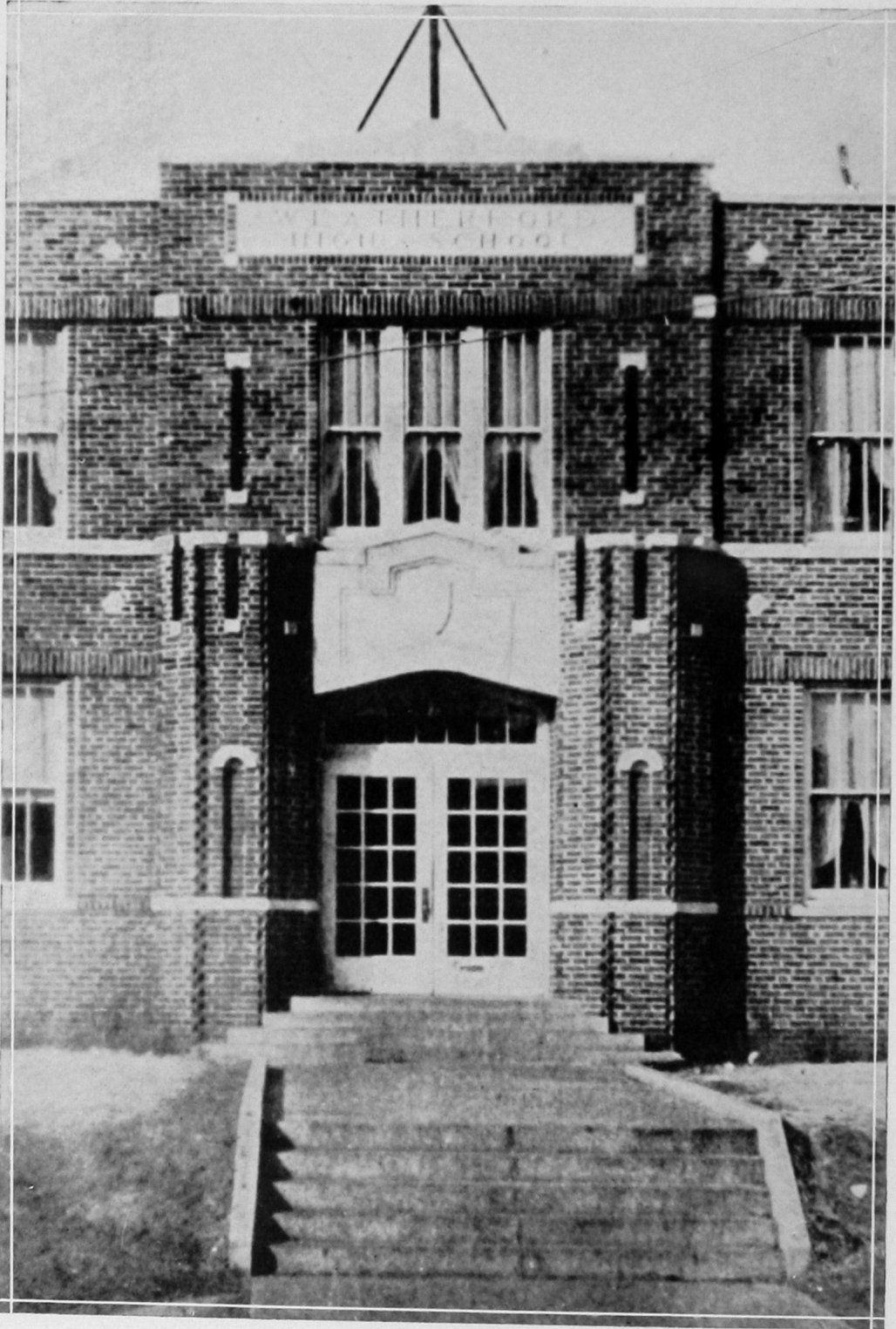
twelve

LIBRARY





GYMNASIUM

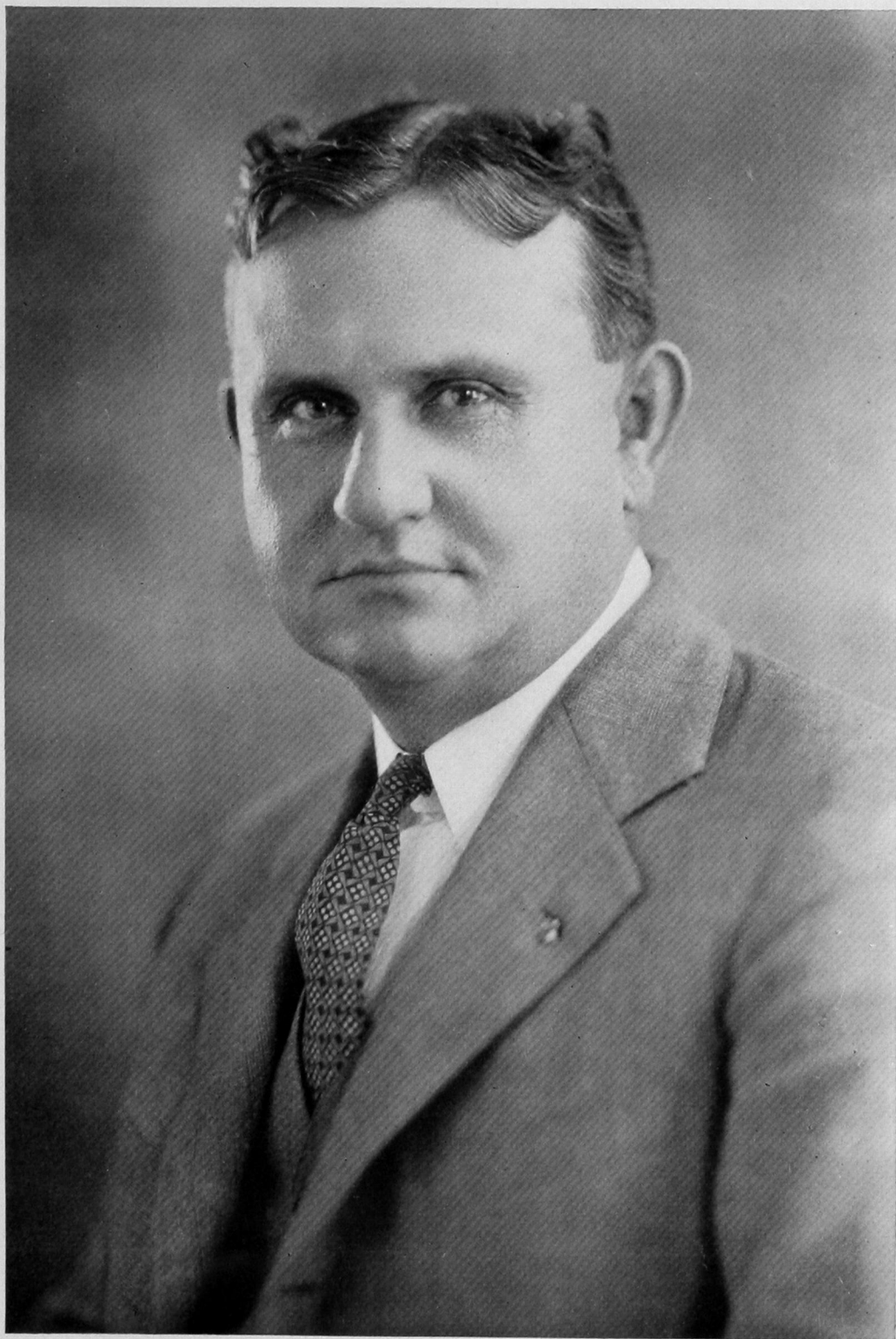


TRAINING SCHOOL



Administration

This page intentionally left blank.



JOHN VAUGHAN
Superintendent





ERNEST EDWARD BROWN
President

sixteen



President's Message

No finer contribution is made to the life of Southwestern State Teachers College than that which is made by those who labor prodigiously that the record may be preserved. The Oracle preserves the record, a record that grows more and more important as the years go by.

No doubt the members of the 1929 Oracle Staff have asked themselves many times, "Is it worth the effort? Is it worth the money?" You may be very sure it is. From the time of the prehistoric man, who drew with marvelous skill his pictured story in the dark recesses of some hidden cavern, down to the present keeper of the record, there has been found no more important service than that which is rendered by these same record keepers. If each generation is to lift itself on the shoulders of those who have gone before, the achievements of each must be carefully preserved.

Perhaps we should adopt a humbler style in commenting on the importance of the present record, but the principle involved is exactly the same. All of us who have been a part of the life of Southwestern as students or instructors for the school year of 1928-1929 are forever in the debt of the staff that has made this book possible.

E. E. BROWN, President.



We see dimly in the Present what is small and what is great,
Slow of faith how weak an arm may turn the iron helm of fate,
But the soul is still oracular; amid the market's din,
List the ominous stern whisper from the Delphic cave within,
"They enslave their children's children who make compromise
with sin."

For humanity sweeps onward: where today the martyr stands,
On the morrow crouches Judas with the silver in his hands;
Far in front the cross stands ready and the crackling fagots
burn,
While the hooting mob of yesterday in silent awe return
To glean up the scattered ashes into History's golden urn.

New occasions teach new duties; Time makes ancient good
uncouth;
They must upward still, and onward, who would keep abreast
of Truth;
Lo, before us gleam her campfires! we ourselves must Pilgrims
be,
Launch our Mayflower, and steer boldly through the desperate
winter sea,
Nor attempt the Future's portal with the Past's blood-rusted
key.

—James Russel Lowell—



J. A. McLAUCHLIN, Ph. D. in
Education, M. A., Litt. D.
*Head of Department of Edu-
cation*



CLARENCE M. McCORMICK,
M. A.
*Head of Department of
Mathematics*

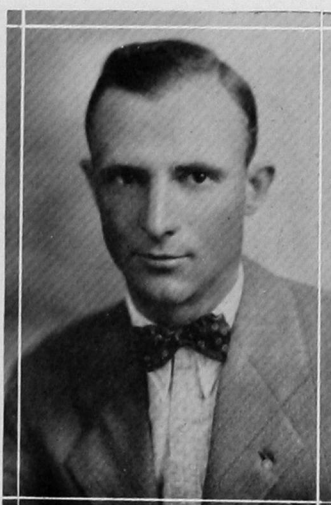


GRACE E. JENCKE, M. A.
*Head of Department of Eng-
lish*

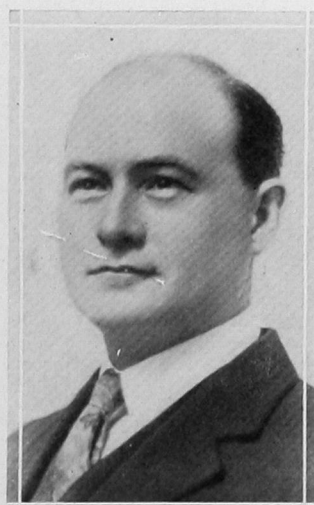
RIVERS M. RANDLE, M. S.
Director of Training School



GLADSTONE B. MOTHERSEAD,
M. S.
*Head of Department of Phy-
sical Science, Dean of Men*



J. C. M. KRUMTUM, M. A.
*Head of Department of For-
eign Languages*





DORA A. STEWART, M. A.
*Head of Department of Social
Science*



MYRTLE S. UMPHRESS, M. A.
*Head of Department of Home
Economics*



AUDUBON H. NEFF, M. A.
*Head of Department Bio-
logical Science*

J. R. PRATT, M. A.
Associate in Mathematics



REVEN DE JARNETTE, B. M.
Head of Department of Voice



MYRLE E. KELLY, B. S.
*Head of Department of Art
and Penmanship*





JENNETT S. CROSBY, M. A.
Associate in Education



MAGNOLIA M. GEE, M. A.
Associate in Education

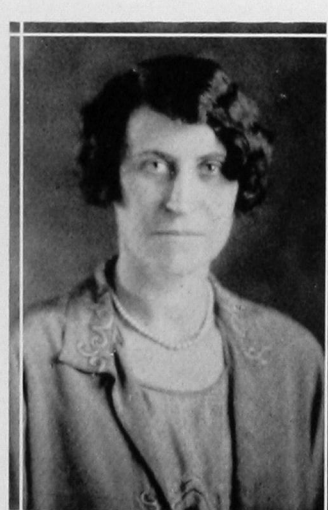
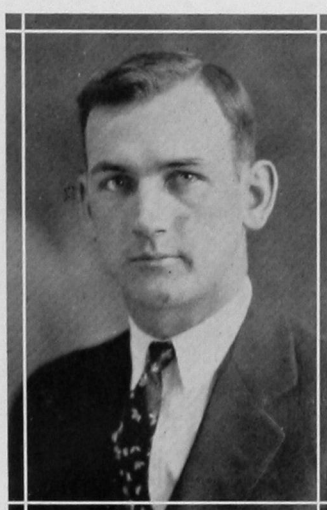


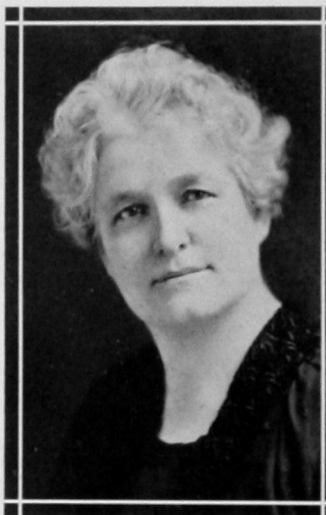
GEORGE M. CRISP, M. A.
Associate in Social Science

J. RANKIN WILLIAMS, A. B.
Director of Physical Education

JOE B. MILAM, A. B.
Coach of Football and Wrestling

BESSIE YEOMAN, M. A.
(Equivalent)
Instructor of Hygiene and Health Education, Dean of Women

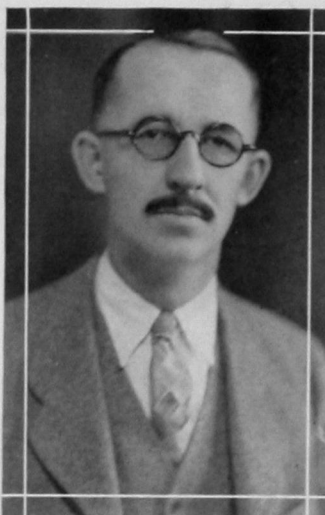




LULA E. VROOMAN, A. B.
Assistant in Education



MAISIE ARNETT SHIREY, A. B.
Director of Rural Training



K. B. CORNELL, A. B.
Head of Commercial Department

GEORGE F. HOOKER, B. M.
Head of Department of Piano

MRS. J. B. MILAM, B. M.
Instructor of Violin

MERNA A. CRABTREE, B. O.
Instructor in Public Speaking, Assistant in English





J. STEWART DOBYNS, B. S.
Registrar and Financial Secretary



EULA C. FROMAN,
Librarian

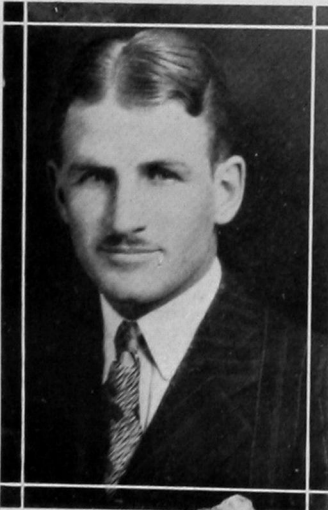


FRANK D. EATON, B. S.
Secretary to President

ERVIN E. KAISER,
*Acting Head of Department
of Industrial Arts*

MRS. K. E. DRISKEL, B. S.
*Assistant in Commercial and
English Departments*

AGNES E. BAST, B. S.
Assistant to Registrar





MATTIE DRISKILL, A. B.
*Supervisor of Junior High
Grades*



FRANK VAN ALSTINE
*Principal of Junior High
School*



GLADYS E. MOSBURG, A. B.
*Supervisor of English in Jun-
ior High School*

ELSIE MCCLURE, A. B.
*Supervisor of Teacher Train-
ing in Fifth and Sixth Grades*

VERA SPEED
*Instructor in Junior High
School*

MRS. CHARLES ADDISON, A. B.
*Supervisor of Teacher Train-
ing in Third and Fourth
Grades*





MARY FORBES, A. B.
Assistant Supervisor of Teacher Training in Third and Fourth Grades



MRS. ARTHUR A. KELLY
Assistant Supervisor of Teacher Training in First and Second Grades

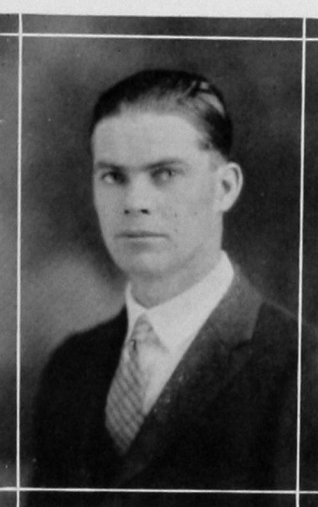


CLARA THOMPSON, A. B.
Supervisor of Teacher Training in First and Second Grades

MAXINE BURT
Director of Physical Education for Women



GUY HAGIN, B. S.
Assistant in Biological Science



CATHERINE PERRING
Assistant in Home Economics





MISS ELSIE SHOEMAKER

Associate in Department of English

Miss Elsie Shoemaker, Associate in English and Instructor in Journalism, is at the University of Missouri doing work on a Doctor's degree.



WILLIAM E. PHILLIPS

Head of Department of Industrial Arts

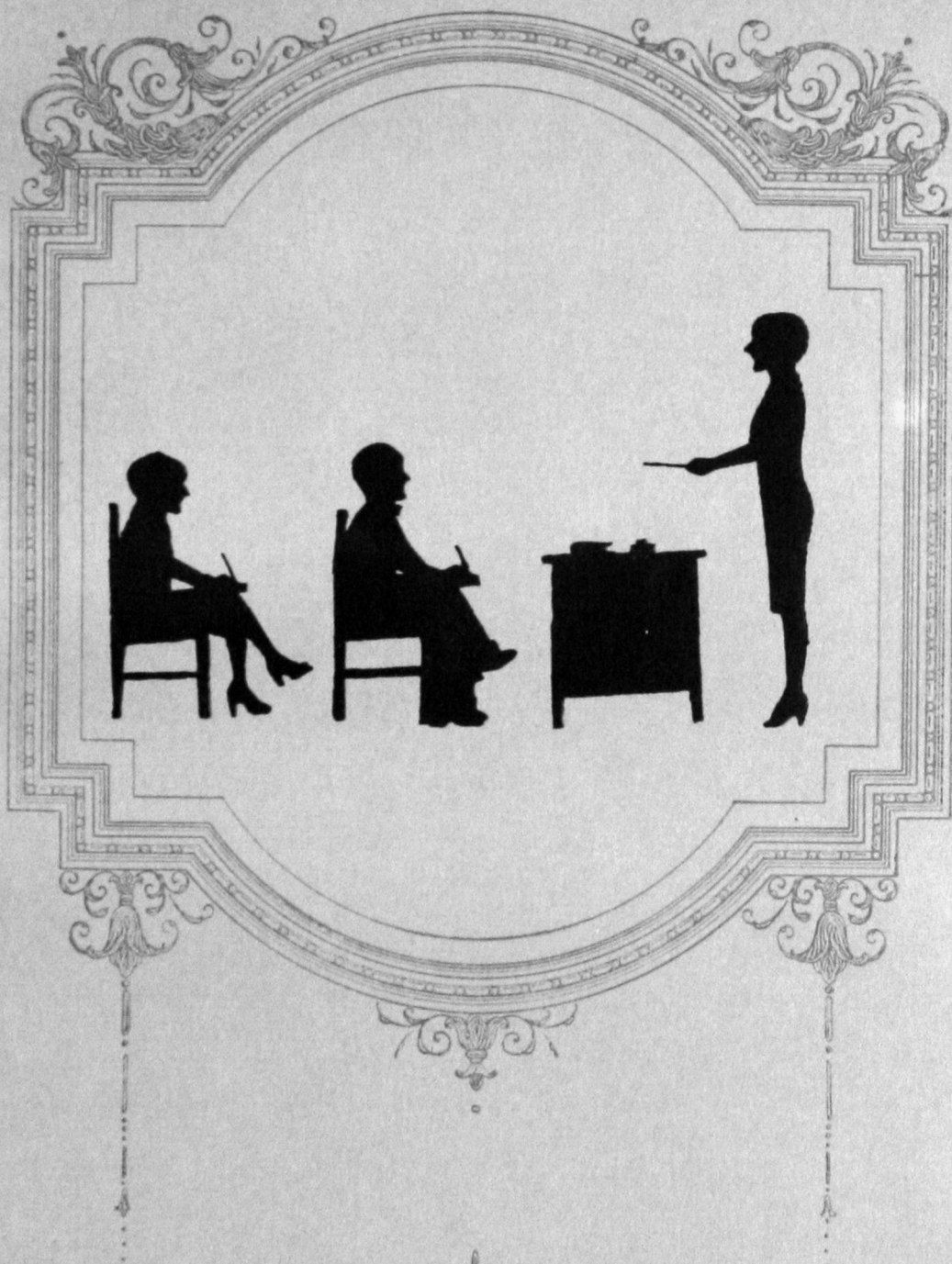
After spending the first half of the year at Pittsburg College, Kansas, Mr. Phillips is at Peabody College working on a Master's degree.



LEE R. WEST

Assistant in the Department of Mathematics

Since the summer of 1928, Mr. West has been working on a Master of Science degree at Peabody College, Nashville, Tennessee.



Classes

This page intentionally left blank.



Seniors

Alma Mater

Standing firmly on the hill-top,
Clearly outlined 'neath the blue,
Emblem of the best and noblest,
Alma Mater true.

REFRAIN:

Hail, all hail to thee, Southwestern,
Alma Mater true!
We will ever sing our praises
To the White and Blue!

Foster Mother, friend so loyal,
Honor, love and faith we bring,
With thy spirit ever near us,
This our song shall ring:

Senior Class Officers



IGO

PERRING

BROWN

OTTO G. IGO, A. B.
President; Basketball

Arapaho

GUY L. BROWN, B. S.
Vice President; Senate; B. S. U.

Thomas

CATHERINE PERRING, B. S. *Cloud Chief*
Secretary-Treasurer; President Hammacian (first semester);
Forensia; Bull Pups; Student Assistant in Home Economics



W. EDWIN ASKINS, B. S. *Granite*
President Senate (Second Semester)

MARIE AMES, B. S. *Weatherford*
Hammacian; Y. W. C. A.



MARY V. BIEBERLE, A. B. *Weatherford*
Y. W. C. A.

LA CLIDA COTTER, B. S. *Weatherford*
Eromathian; Pi Gamma Mu; Oracle Staff



FANNY COPE, B. S. *Weatherford*
Hammacian; Y. W. C. A.; B. S. U.

EFFIE DUNN, B. S. *Jenks*
Eromathian; W. A. A.; Y. W. C. A.; B. S. U.



ALTON ELLIS, B. S. *Sentinel*
President Senate (First Semester) Q. P. Club; Y. M. C. A.; Cross Country Team; Shakespearian Play; Vice president Student Assembly

ELIZABETH FAST, B. S. *Weatherford*
Hammacian; P. B. C.; Y. W. C. A.



MARC H. FORD, B. S. *Elk City*

LOYS HAWS, B. S. *Cordell*
Hammacian

WILLIAM B. HURST, A. B. *Mangum*

ELSIE JONES, B. S. *Arapaho*
Hammacian

FRANCIS MARIE MAIN, A. B. *Hinton*
P. B. C.

RUTH ANN MORGAN, A. B. *Hinton*
W. A. A.; P. B. C.; Y. W. C. A.

MADGE McCAULEY, B. S. *Chickasha*
President P. B. C.; Eromathian

VIOLA RAMMING, A. B. *Hinton*
Y. W. C. A.

CHARLES L. NELSON, B. S. *Granite*

MRS. CHARLES L. NELSON, A. B. *Granite*
Eromathian

LEE RATCLIFFE, A. B. *Weatherford*
President Student Assembly; Senate; Business Manager Oracle

LEONE RATCLIFFE, A. B. *Weatherford*
W. A. A.; Glee Club; P. B. C.; Oracle Staff



thirty-one



HOWARD W. QUATTLEBAUM, B. S. *Leedy*
Senate; B. S. U.; Y. M. C. A.; Tennis

WINNIFRED LAVERNE ROBINS, B. S. *Weatherford*
Pi Gamma Mu; President Eromathian (first semester)

JOE D. REYNOLDS, B. S. *Friona, Texas*
Football-Co-Captain Elect; Track

GLADYS SMITH, B. S. *Reed*
Oracle Staff (Senior Representative);
Eromathian; Y. W. C. A.; B. S. U.

ANNA SNODDY, A. B. *Elk City*
Eromathian; Y. W. C. A.

DESSIE STALNAKER, A. B. *Gueda Springs, Kansas*

BERT A. WILLIAMS, A. B. *Granite*
Senate; P. B. C.

MRS. BERT A. WILLIAMS, A. B. *Granite*
P. B. C.

ERNEST COPELIN, B. S. *Granite*
Senate; Q. P. Club; B. S. U.; P. B. C.

MARY L. WILSON, B. S. *Carpenter*
P. B. C.; Y. W. C. A.; Hammacian

MILTON L. BAST, B. S. *Weatherford*

FLORENCE ALBIN, B. S. *Foss*
Forensia; Tri J; Bull Pups

OVIS COOKE, A. B. *Arapaho*

FAYE CORNWELL, A. B. *Custer City*
B. S. U.

FLORENCE CUNNINGHAM, B. S. *Watonga*
Bull Pups; Tri J; Forensia; Most Popular Girl

ELGIN C. HARDIN, A. B. *Weatherford*
Eromathian; W. A. A.

ANNA HOERMAN, B. S. *Weatherford*

CAROL D. FARMER, B. S. *Weatherford*

EDWARD STEVENS, B. S. *Cement*
Senate; Y. M. C. A.

MRS. J. P. CLARK, B. S. *Granite*
Hammacian



thirty-three



D. E. SPENCER, B. S. *Mt. View*

DONA MARSHALL, A. B. *Weatherford*
Forensia; Bull Pups

WILLIAM J. PEEVER, B. S. *Roosevelt*

BERTHA CASADA, A. B. *Mangum*

C. C. WYATT, B. S. *Reed*

CLARA ELLEN FISHER, B. S. *Weatherford*

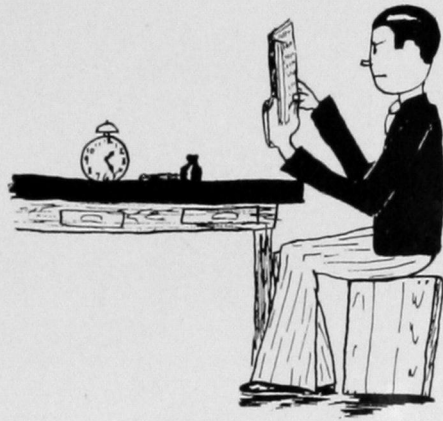
CARROLL E. WRIGHT, B. S. *Weatherford*
S Club; Football

MRS. HARRY HAYES, B. S. *Altus*

JAMES H. DOUGHTY, B. S. *Weatherford*

LOIS LAWRENCE *Weatherford*

thirty-four



Juniors

Southwestern Pep Song

Just give 'way your flags and horns and all,
Southwest College is coming with the ball,
Southwest College sons are ever true,
Makes it awfully hard on Y-O-U.

Refrain:

Football, basket-ball, oratory too,
Run, write, talk, fight; win in all we do.
Southwest College is coming after you,
Rah! Rah! Rah! for White and Blue.

Bull-dogs sweep down upon the enemy,
Caging goals for our great victory,
Scoring for their Alma Mater true,
Bringing honor to old White and Blue.

Crunch! Crunch! Crunch! Crunch! Take a seat in
back
Southwest College is coming down the track,
Big blue "S" comes first in running too,
Second's all that's left for Y-O-U.

Junior Class Officers



ANDERSON

FOWLER

PARR

ROY ANDERSON *Durham*
President; "S" Club; Senate; Y. M. C. A.; Yell Leader;
Wrestling; Cross Country; Track

CLINTON PARR *Lawton*
Vice-President; Student Assembly President; Senate; B.
S. U.; Y. M. C. A.; Oracle Staff

JAMES FOWLER *Clinton*
Secretary-Treasurer; Senate; Y. M. C. A. (Secretary)



thirty-eight

VIRGINIA McCAULEY *Chickasha*

P. B. C.; Gobblers

ADOLPH BOLLENBACH *Weatherford*

Shakespearian Play; Band

REBA MAE VICKERS *Weatherford*

Hammajian

CLYDE SHANNON *Thomas*

Editor-in-Chief Oracle; Editor of the South-western; Q. P. Club, (President); Senate; Band; Pi Gamma Mu

FLORENCE ROESLER *Weatherford*

Eromathian, (President); W. A. A. (Secretary); Glee Club; Y. W. C. A.

MARVIN EASLEY *Snyder*

RUTH DAY *Blake*

P. B. C.

D. DOWDY *Duke*

Football; "S" Club

MRS. CHARLES BRYAN *Mt. Park*

W. A. A.

MAURICE NORMAN *Weatherford*

"S" Club; Wrestling Captain

SUSIE WELCH *Weatherford*

Hammajian; W. A. A.

HURSHAL RISINGER *Cordell*

Senate; Y. M. C. A.; Q. P. Club

JAMES C. ALVIS

Thomas

Football; Wrestling; Track

ISABELLE DRAY

Weatherford

Forensia, (President); Tri J, (Secretary);
Bull Pups, (President)

PAUL H. REMPEL

Corn

Senate; Y. M. C. A. (President); B. S. U.

MARGUERITE HANGER

Frederick

Hammacian

JAMES FOWLER

Clinton

Senate; Y. M. C. A. (Secretary)

ALTA GLASGOW

Elk City

RICHARD VAN DUYNE

Weatherford

Senate; Y. M. C. A.

CLINTON PARR

Lawton

President Student Assembly; Senate; B.
S. U.; Y. M. C. A.; Oracle Staff

GLADYS G. JARVIS

Cache

Glee Club; Hammacian; Forensia; W. A.
A. (President)

HOWARD MUSSELMAN

Weatherford

Y. M. C. A.; Senate; B. S. U.

CLARIS CLARK

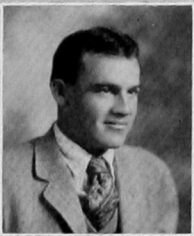
Weatherford

Hammacian; W. A. A.

EARL "Lefty" HOLT

Cloud Chief

"S" Club; Basketball; Second All State
Forward; Track; Cross Country





NEIL ADKINS
Football Captain

Hydro

BERNICE HARDIN
W. A. A.; Rural Education Club

Weatherford

WILLIE CATHERINE HARRIS
Y. W. C. A.; P. B. C.

Thomas

WILLIAM TOWER

Taloga

ROY ANDERSON
"S" Club; Senate; Y. M. C. A.; Lell Leader;
Wrestling; Cross Country; Track

Durham

LETA DILLON

Dill



Sophomores

Sophomore Class Officers



JANZEN

GUESS

SLOOP

RUDIE JANZEN

President; Triangular Debate; Y. M. C. A.; Senate; Q. P. Club; Oratory; Rural Education Club; Band; Orchestra

Weatherford

JAMES R. SLOOP

Vice-President; Glee Club

Weatherford

HELEN WAYNE GUESS

Secretary-Treasurer; Forensia; Y. W. C. A.; Glee Club; Bull Pups

Weatherford

LUCILE MEACHAM

Clinton

MILTON L. KEEN

Weatherford

Q. P. Club; Oratory

IRMA BAKER

Lookeba

May Queen; Y. W. C. A. President; Q. P. Club

GLADYS FLETCHER

Clinton

Hammacian; W. A. A.

ROSE MARIE McDANIEL

Mangum

W. A. A.

CLAIRE DAVIS

Dedsonville, Texas

Hammacian

KATHRYN YOUNG

Mt. View

Rural Education Club; W. A. A.

FRANCES ROESLER

Weatherford

Hammacian

REVA MITCHELL

Frederick

Bull Pups; Y. W. C. A.

AGNES CUNNINGHAM

Watonga

Glee Club; Eromathian; Quartette; Trio; Forensia

NELL JENNINGS

Foss

Hammacian

ELIZABETH DOBYNS

Weatherford

Bull Pups; Q. P. Club

FREDA LEHMANN

Geary

W. A. A.; P. B. C.; Y. W. C. A.; Rural Education Club

EFFIE CALLEN

Cooperton

Q. P. Club; Y. W. C. A.





forty-four

D'LILA CANNON

Rocky

Y. W. C. A.; W. A. A.; Q. P. Club

LUCILLE POST

Brinkman

Bull Pups; Q. P. Club

CLEO MASONER

Brinkman

Q. P. Club; Bull Pups

CECIL FOLKS

Carter

Q. P. Club; Cross Country; Rural Education Club

GERTRUDE McCULLOCH

Weatherford

Y. W. C. A.

ALTA STILES

Lone Wolf

BESSIE H. FRANCIS

Wilsonville, Nebr.

RUTH CRALL

Weatherford

Y. W. C. A.; Glee Club

GLADYS ROGERS

Brinkman

Q. P. Club; Bull Pups

JAMES A. HOBBS

Hinton

Q. P. Club

PAULINE WALLER

Carter

Bull Pups; P. B. C.

MARIE KELLEY

Eakley

Y. W. C. A.; Hammacian

VERNA AARON

Clinton

VIRGINIA DOBYNS

Weatherford

Bull Pups; Q. P. Club

OPAL LEWIS

Hinton

ESTHER SCHILBERG

Bessie

Glee Club; Y. W. C. A.; B. S. U.

WILLIAM T. STEWART

Weatherford

Football; Basketball; Track; Q. P. Club;
Band; Debate

EDITH RECKER

Eakley

ESTHER BRADSHAW

Weatherford

W. A. A.

MARY HARRISON

Gotebo

Eromathian

JOHN C. DICKSON

Weatherford

SUSIE GROVES

Weatherford

Glee Club; Y. W. C. A.

ORLO ROBERDS

Vici

Cross Country; Track; S Club

VIRGINIA RIFFE

Carnegie

RUTH MITCHELL

Clinton

Tri J Forensia; Bull Pups

ERNEST HENDERSON

Frederick

Senate; Y. M. C. A.; Q. P. Club

IDUS "Pide" ADAMS

Hobart

Sophomore Yell Leader

OLGA PORTER

Carter



forty-five



PAUL W. GENUNG *Lookeba*

Senate; Rural Education Club

EMMA JANE TAYLOR *Weatherford*

Bull Pups; W. A. A.

ETHEL COX *Eakley*

Y. W. C. A.; Gobblers

EVA MARCUM *Hydro*

P. B. C.; Y. W. C. A.

LAWRENCE SCHREINER *Weatherford*

CORINNE MEACHAM *Clinton*

Tri J; Bull Pups

CHARLES F. MITCHELL *Martha*

Senate; Y. M. C. A.

MRS. MAURICE NORMAN *Weatherford*

BERTHA BARTON *Jester*

ROBERTA DUNN *Jenks*

Eromathian; W. A. A. Secretary
First Semester

NINA ROBERTS *Faye*

W. A. A.

MRS. JAMES C. ALVIS *Bridgeport*

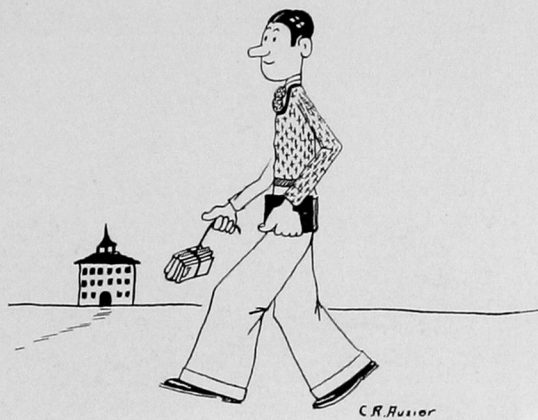
HULDA HORST *Weatherford*

Glee Club; W. A. A.; Y. W. C. A.; P.
B. C.

SELMA DEAN WELLMAN *Thomas*

Q. P. Club; B. S. U.





Freshmen

Freshman Class Officers



KENDALL

HATCHETT

McDANIELS

FRED KENDALL *Weatherford*
President; Glee Club; Double Quartette; Q. P. Club

HAROLD McDANIELS *Brinkman*
Vice-President; Q. P. Club; Rural Education Club

THELMA HATCHETT *Foss*
Secretary-Treasurer; Forensia; Bull Pups; Freshmen Queen;
Kodak Editor on Oracle Staff

ELBERT LEE PATTON

Martha

GLADYS ROSS

Apache

Y. W. C. A.; Hammacian

DOROTHY CARR

Sayre

B. S. U.

MAURINE POST

Brinkman

Q. P. Club; Bull Pups

THELMA FAYE FENDER

Elk City

LOUIS WILSON

Frederick

ISABELLE LOMENICK

Cooperton

Y. W. C. A.; W. A. A.

OPAL SMITH

Delhi

B. S. U.; Gobblers

HUGH HALEY

Cooperton

HALLIE BAKER

Geary

Rural Education Club

EDD HALEY

Cooperton

All State Cross Country

BERNICE CARPENTER

Reed

WILBUR C. JONES

Leedy

VELMA MILLER

Putnam

Q. P. Club; Bull Pups; Hammacian; Y.
W. C. A.; Rural Education Club



forty-nine



VAE EDWARDS *Apache*

JOY McCORKLE *Clinton*
Y. W. C. A.; Orchestra

RUBY MILLER *Cooperton*
Hammajian; Y. W. C. A.

JIMMIE RENISON *Custer City*

MINNIE RYLANT *Elk City*

MARGIE HARMS *Corn*
Forensia

MARY JARVIS *Cache*
Glee Club; W. A. A.

GEORGE KEITH *Thomas*

ANNA MAE HANEY *Tipton*
Freshmen Representative Oracle Staff; President W. A. A.; Q. P. Club

ELSIE RAASCH *Bessie*
Y. W. C. A.; Glee Club

CLARENCE AUXIER *Weatherford*
Art Editor Oracle; P. B. C.

INA CARTER *Thomas*
B. S. U.; Glee Club; Trio

FERNE RUTH KINCY *Ft. Cobb*

CLIFFORD SABIN *Waukomis*
Rural Education Club

GEORGE EWALD HEINRICH *Weatherford*
Q. P. Club; Glee Club

RUBY ALEXANDER *Clinton*

FARREL CROSSMAN *Gould*

BERTHA BROOKS *Weatherford*

ILA FREEMAN *Reed*

RUTH FREEMAN *Reed*

CALLIE FLICK *Hammon*

AUDREY CRABB *Foss*
B. S. U.

VIVIAN PAYNE *McQueen*
Y. W. C. A.

FREDA DICK *Bessie*
Y. W. C. A.

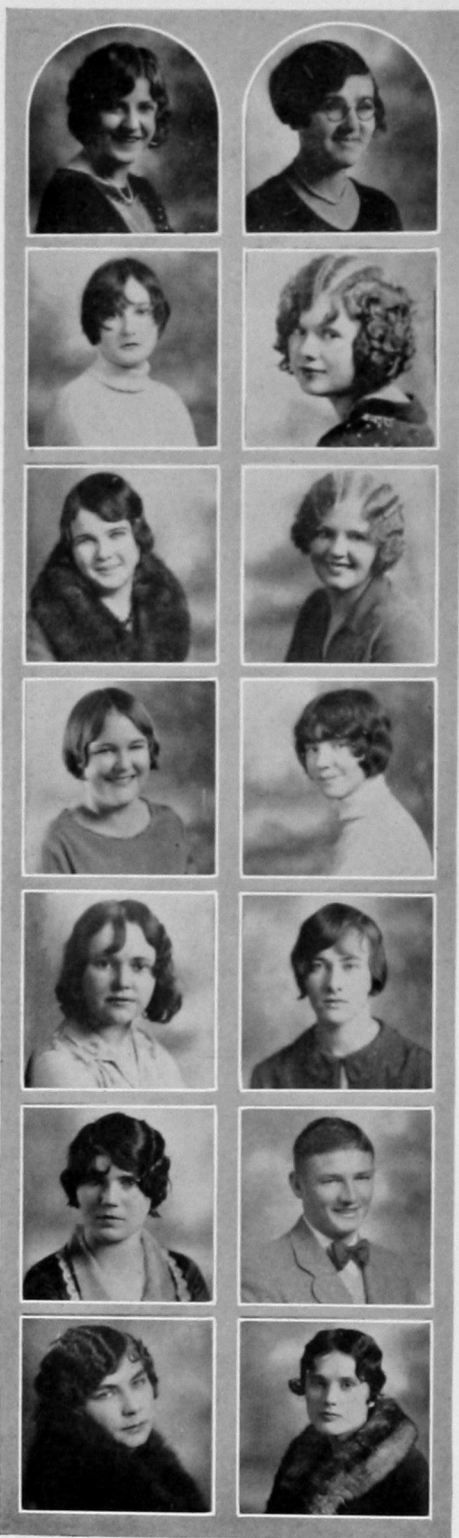
IRENE STINE *Putnam*
Bull Pups; Q. P. Club

LEILA TAYLOR *Tipton*
Q. P. Club; W. A. A.

ADINE HATCHETT *Foss*
Rural Education Club

J. E. HEINRICHS *Colony*
B. S. U.; Y. M. C. A.; Senate; Glee Club;
Rural Education Club; P. B. C.





GLADYS LARKIN

Weatherford

Q. P. Club; W. A. A.

JEWEL A. MILLINGTON

Berlin

LOREE ROSE

Granite

LILLIE MODENIA JACKSON

Alber:

VYOLA WILLIAMS

Port

W. A. A.; Rural Education Club

VELMA LOFLIN

Anadarko

OPAL GLIDEWELL

Hydro

Rural Education Club; Hammacian

BESS BEX

Mangum

DESSIE ALLEN

Granite

MARY A. VOSBURGH

Weatherford

Eromathian; Glee Club

DOROTHY TEMPLER

Duke

C. L. BARNETT

Mangum

Football

LAVERNE VOGELSANG

Fargo, N. Dak.

JESSIE MOORE

Moorewood

Y. W. C. A.; B. S. U.

MARTHA ALLRED *Roosevelt*

Y. W. C. A.; W. A. A.

BARBARA PERRING *Cordell*

Q. P. Club; Bull Pups

CLARA BOYD *Weatherford*

Glee Club; Tri J; Bull Pups

JOSEPHINE SUGDEN *Weatherford*

Bull Pups; Tri J; Rural
Education Club

LORA ADKINS *Putnam*

Rural Education Club; Y. W. C. A.

FLORA ADKINS *Putnam*

Rural Education Club; Y. W. C. A.

RUTH M. HERRON *Elk City*

RUBY I. HERRON *Elk City*

MAUDE CURRY *Clinton*

LELA LORIS TALIAFERRO *Canute*

MARION CUNNINGHAM *Watonga*

Bull Pups; Tri J

FREDA YOUNGSTEDT *Mt. View*

MERLE WALKER *Durham*

RENA DOSHER *Tipton*





GLEN STAMBAUGH *Thomas*
Basketball

ZELLA MEEK *Ft. Cobb*

BIRDIE BRUTON *Lone Wolf*

Wm. DEAN HOOK *Independence*

FRED KAISER *Waseca, Minn.*
Rural Education Club

LEONE JANICE SCOVIL *Weatherford*

ALEDO RENDER *Roosevelt*
B. S. U.

EPHRIAM DICKSON *Clinton*
Basketball; Band

ROY WILLIAMS *Cooperton*

RUBY SMITH *Elk City*

ANNA MAUDE STREET *Sentinel*
Tri J; Bull Pups; Glee Club

LILY E. HOERMAN *Weatherford*

LILA EDITH HILL *Liberal, Kansas*

CLEO CURNUTT *Gould*

MARY BETH MILLER

Willow

TILLMAN REEVES

Sayre

Y. M. C. A.

MARION COLGROVE

Arapaho

Glee Club; Orchestra; Tri J

CLIFFORD MILLIGAN

Hinton

Glee Club; Q. P. Club

JUANITA BUCHANAN

Thomas

Glee Club

RUTH ROYCE

Elk City

Bull Pups; Tri J; P. B. C.; Y. W. C. A.

CLARA DYKES

Grandfield

Y. W. C. A.

ROY CARTWRIGHT

Hydro

Rural Education Club; Football; Basketball

MODEILLE LANCASTER

Clinton

W. A. A.

BERNICE COUCH

Cloud Chief

GLADYS ROBERTS

Sweetwater

MARGINE DeBORD

Durham

NONA "Spike" ROMAN

Hydro

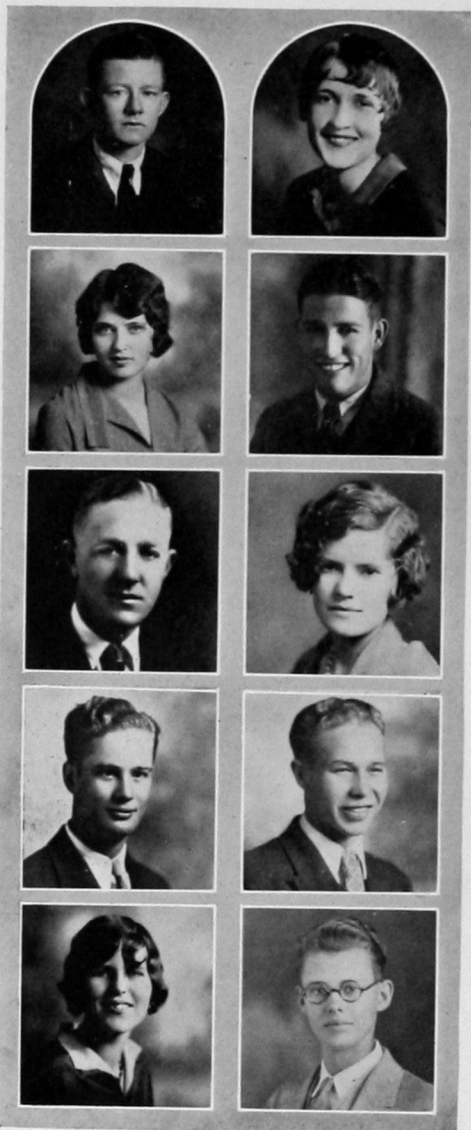
Football; Baseball

MARGIE MAYE HAWS

Foss

Basketball





EARL O. COX

Eakley

FRANCES AVRITT

Weatherford

Bull Pups; Y. W. C. A.; Glee Club

THELMA HATCHETT

Foss

Class Secretary; Forensia; Bull Pups;
Freshmen Queen; Kodak Editor on Oracle
Staff

GRADY E. JACKSON

Altus

Basketball; Football

PAUL KENNER

Cloud Chief

Basketball

RUTH SANDERS

Elk City

Q. P. Club; Band

HAROLD A. McDANIELS

Brinkman

Vice-President Freshmen Class; Q. P. Club

FRED KENDALL

Weatherford

Glee Club; Double Quartette; Class Presi-
dent; Q. P. Club

BESSIE WERTS

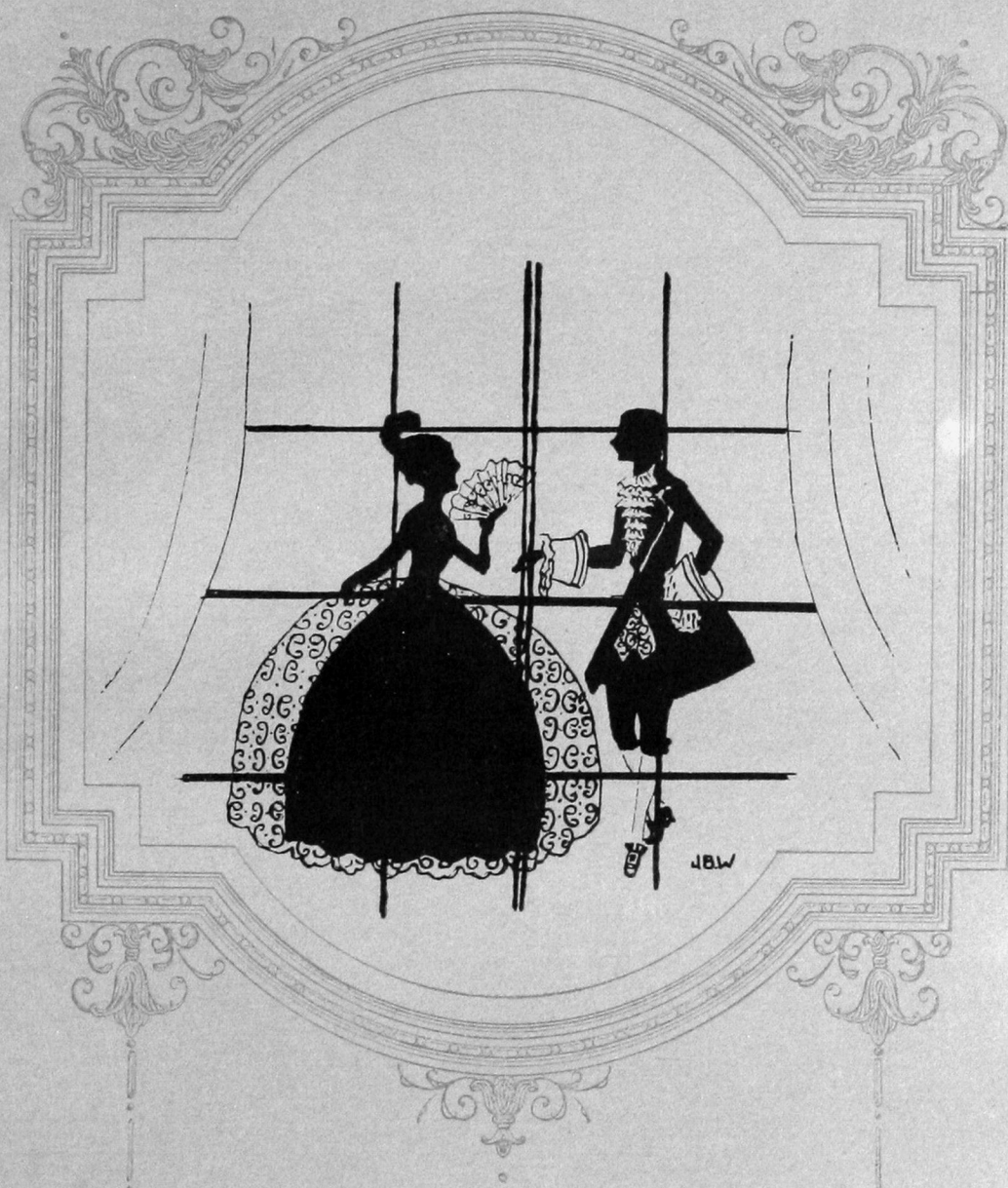
Carnegie

W. A. A.

MASON HOWE

Weatherford

Debate; Band; Orchestra



Activities

This page intentionally left blank.



Organizations

Be Strong

Be strong!

We are not here to play, to dream, to drift;
We have hard work to do, and loads to lift;
Shun not the struggle—face it; 'tis God's gift.

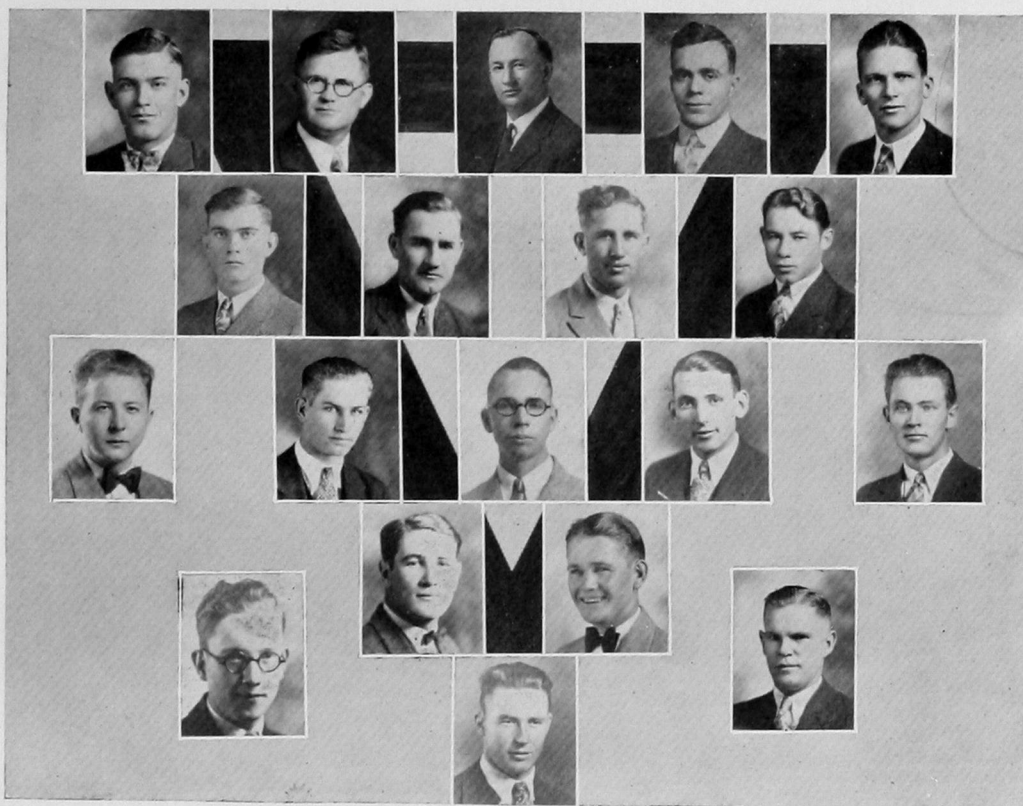
Be strong!

Say not, "The days are evil. Who's to blame?"
And fold the hands and acquiesce—oh shame!
Stand up, speak out, and bravely, in God's name.

Be strong!

It matters not how deep intrenched the wrong,
How hard the battle goes, the day how long;
Faint not—fight on! Tomorrow comes the song.
—Maltbie Davenport Babcock—

Y. M. C. A.



OFFICERS

First Semester

PAUL H. REMPEL
CLINTON PARR
JAMES FOWLER
CHARLES MITCHELL

President
Vice-President
Secretary-Treasurer
Chaplain

Second Semester

JAMES FOWLER
ERNEST HENDERSON
J. E. HEINRICHS
CLINTON PARR

MEMBERS

Roy Anderson
Ernest Copelin
Wiley Copelin
Alton Ellis
James Fowler
Jacob E. Heinrichs
Ernest Henderson
Rudy Janzen
Charles Mitchell
Howard Musselman
Vernon Musselman

Clinton Parr
Paul H. Rempel
Theodore Peckham
Tillman Reeves
Clyde E. Shannon
Edward Stevens
Richard VanDuyne
Bert Williams
Bart Woods
Mart Woods

J. R. PRATT

SPONSORS
GEO. M. CRISP

C. M. McCORMICK

fifty-nine





sixty

Y. W. C. A.

OFFICERS

First Semester

IRMA BAKER
RUTH CRALL
JULIA BEACH
REVA MITCHELL
ESTHER SCHILBERG
SUSIE GROVES

President
Vice-President
Secretary
Treasurer
Chorister
Pianist

Second Semester

IRMA BAKER
ELSIE RAASCH
VELMA MILLER

ESTHER SCHILBERG
SUSIE GROVES

MEMBERS

ESTHER FOURIER
LILLIE MAE MATTHEWS
GLADYS ROSS
MARIE KELLEY
ETHEL COX
LORA ADKINS
FLORA ADKINS
VIVIAN PAYNE
GERTRUDE McCULLOCH
JULIA STOVER
PEARL FITE
PAULINE LASSETER
ALBERT BEST
RUTH ROYSE
ZELLA MEEK
REBA MAE VICKERS
EFFIE DUNN
EFFIE CALLAN

EDNA SANDERS
VERA SANDERS
GRACE SINCLAIR
RUBY MILLER
VERA WRIGHT
RUTH DAY
ALMA MILLER
RUTH ANN MORGAN
VIOLA RAMMING
GRACE BIRDWELL
ETHEL BEALL
HAZEL BARRETT
DOROTHY CARLISLE
FRIEDA LEHMAN
HARRIETTE HAMILTON
HULDA HORST
FREIDA DICK

KATHERINE KENNEY
GLADYS SMITH
OPAL DAVIS
GLADYS WIDNEY
JOY McCORCKLE
MYRTLE SPAIN
MARIE GRAMLICK
MAYME DUMAS
D'LILA CANNON
EUNICE KAISER
MARY HAWSER
CLARA DYKES
BESSIE CLARK
JESSIE MOORE
IRENE COLBAUGH
LORENE CUNNINGHAM
EVA MARCUM
FLORENCE ROESLER

The year 1928-29 has proved a successful one for the Y. W. C. A. Among the various activities were: Observance of World's Week of Prayer, Christmas Pageant and the sale of Japanese art goods. Jointly the Y. M. C. A. and Y. W. C. A. sponsored the Student Mixer, the Student Directory, the awarding of a silver loving cup to the organization giving the best assembly program and the Thanksgiving donation.





sixty-two

Forensia Society

OFFICERS FIRST SEMESTER

ISABELLE DRAY
DONA MARSHALL
MINNIE LEE MELTON
HELEN WAYNE GUESS

President
Vice-President
Secretary
Sergeant-at-Arms

OFFICERS SECOND SEMESTER

MINNIE LEE MELTON
AGNES CUNNINGHAM
FLORENCE CUNNINGHAM
FLORENCE ALBIN

President
Vice-President
Secretary
Sergeant-at-Arms

Miss Myrtle Umphress, Sponsor

ACTIVE MEMBERS

Florence Albin
Agnes Cunningham
Florence Cunningham
Isabella Dray
Elizabeth Dobyns
Mary Forbes
Helen Wayne Guess
Marjorie Harms

Thelma Hatchett
Barbara Hudgins
Gladys Jarvis
Dona Marshall
Minnie Lee Melton
Catherine Perring
Pauline Waller
Freda Youngstedt



sixty-four

Senate

OFFICERS

First Term of Second Semester

EDWIN ASKINS
ERNEST COPELIN
BERT WILLIAMS
VERNON MUSSELMAN
GUY BROWN
J. R. PRATT
G. M. CRISP

President
Vice-President
Recording Secretary
Treasurer
Parliamentarian
Critic
Assistant Critic

The Senate, while primarily a debating society offering practice in parliamentary procedure, does not lose sight of the social side of school life. It stands behind the school in every undertaking, whether athletic or literary. As one of the oldest organizations in the school, the Senate has held a leading place throughout its history. As a body, the members sincerely hope that their efforts may be of use to the future organization and thereby help to make Southwestern an even better school than it is today.

MEMBERS

Guy Brown
Alton Ellis
Edwin Askins
Ernest Copelin
Roy Anderson
James Fowler
Charles Mitchell
Vernon Musselman
Howard Musselman
Clinton Parr
Paul Remple
Ernest Henderson

Edward Stevens
Richard Van Duyne
Bert Williams
Paul Genung
Jacob Heinrichs
Cecil Folks
Clarence Auxier
Charlie Howe
Melvin Davis
Howard Quattlebaum
T. E. Lennon
Clyde Shannon
Wiley Copelin



sixty-six

Hammacian Club

OFFICERS

First Semester

CATHERINE PERRING

GLADYS FLETCHER

ELSIE JONES

ELIZABETH FAST

*President**Vice-President**Secretary**Treasurer*

Second Semester

LOYS HAWS

FANNY COPE

VELMA MILLER

CATHERINE PERRING

MISS MYRTLE UMPHRESS, Sponsor.

HONORARY MEMBERS

MRS. E. E. BROWN

MISS KATE BOLLENBBACH

MISS GRACE JENCKE

MRS. JENNETT S. CROSBY

ACTIVE MEMBERS

Marie Ames

Claris Clark

Fanny Cope

Cleo Curnutt

Claire Davis

Elizabeth Fast

Gladys Fletcher

Opal Glidewell

Loys Haws

Gladys Jarvis

Nell Jennings

Elsie Jones

Marie Kelley

Ruby Miller

Velma Miller

Reva Mitchell

Catherine Perring

Frances Roesler

Gladys Ross

Reba Mae Vickers

Susie Welch

Mary Wilson

The Hammacian Club, the youngest on the campus, is a member of the American and Oklahoma State Home Economics Associations.

The assembly program, given by this organization, had as its theme "Social Usages". Several pleasant teas have been enjoyed in the new club room, which is now being furnished. The club hopes to grow as much next year as it has during the present school year.





sixty-eight

Palette and Brush Club

OFFICERS

First Semester

MADGE McCAULEY
RUTH ANN MORGAN
RUTH DAY
MAYME DUMAS

President
Vice-President
Secretary-Treasurer
Sergeant-at-Arms

Second Semester

MADGE McCAULEY
RUTH ANN MORGAN
MARY WILSON
MAYME DUMAS

MISS MYRLE KELLY, Sponsor

MEMBERS

Clarence Auxier
Frances Brothers
D'Lila Cannon
Dorothy Carlisle
Buena Cooper
Ernest Copelin
Faye Coulson
Ruth Day
Mayme Dumas
Mrs. Ruth Ealey
Elizabeth Fast
Mrs. Jewel Hurst
Jake Heinrichs
Mrs. Myrtle Hann
Nell Jennings
Freida Lehman
Chlora Markham

Alma Miller
Eva Marcum
Madge McCauley
Virginia McCauley
Dora McMann
Ruth Ann Morgan
Leone Ratcliffe
Virginia Riffe
Ruth Royse
Dona Sims
Inez Snyder
Reba Mae Vickers
John Waldrip
Pauline Waller
Bert Williams
Mrs. Bert Williams
Mary Wilson

The Palette and Brush Club was organized in 1919, and became a member of the National Federation of Women's Clubs in 1924.

The great aim of the club is: "To promote the appreciation of art and love of nature, and to encourage the advancement of all phases of art."

Meetings are held weekly. The programs in which art is the general theme, are made both interesting and instructive.

Any private art student of good character is eligible for membership.





seventy

Q. P. Dramatic Club

OFFICERS

First Semester
 CLYDE SHANNON
 CLEO MASONER
 MILTON KEEN
 ERNEST COPELIN

President
Vice-President
Secretary-Treasurer
Sergeant-at-Arms

Second Semester
 ERNEST COPELIN
 VELMA GARNETT
 VIRGINIA DOBYNS
 CLYDE SHANNON

MERNA CRABTREE, Sponsor

MEMBERS

Irma Baker
 Effie Callen
 D'Lila Cannon
 Patti Carter
 Ernest Copelin
 Elizabeth Dobyns
 Virginia Dobyns
 Alton Ellis
 Willie Emerson
 Pearl Fite
 Cecil Folks
 Velma Garnett
 Anna May Haney
 Ewald Heinrich
 James Hobbs

Rudie Janzen
 Milton Keen
 Gladys Larkins
 Cleo Masoner
 Velma Miller
 Barbara Perring
 Catherine Perring
 Lucile Post
 Maurine Post
 Hurshal Risinger
 Gladys Rogers
 Clyde Shannon
 Irene Stine
 William Stewart
 Leila Taylor

The purpose of the Q. P. Dramatic Club is to develop talent and promote appreciation in dramatic art in Southwestern State Teachers' College.

Full of energy and enthusiasm, the members of the Q. P. Dramatic club started the school year. Though only a few old members returned, there were enough to give the fall pledges some original thought concerning novel forms of initiation.

"You Know! I Know! Shake!", a one act farce comedy presented in assembly, proved very popular. It was reproduced before the Kiwanis and Rotary Clubs of Weatherford and neighboring towns and before the Legionaires at the district meet.



Tri-J Club

FINE ARTS CLUB

OFFICERS

EDNA EARL WRIGHT
RUTH MITCHELL
ISABELLE DRAY
MRS. J. B. MILAM

President
Vice-President
Secretary-Treasurer
Sponsor

ACTIVE MEMBERS

Marion Colegrove
Corinne Meacham
Ruth Mitchell
Minnie Lee Melton
Ruth Royse
Anna Maude Street
Josephine Sugden
Valeska Thomas
Clara Boyd

Ethel Hayes
Marion Cunningham
Florence Cunningham
Florence Albin
Alleda Miller
Isabelle Dray
Oma Bishop
Marjorie Galloway
Edna Earl Wright

HONORARY MEMBERS

Maxine Burt
Mrs. E. E. Brown

Mrs. E. K. Driskel
Mrs. Rankin Williams

PATRONESSES

Mrs. J. Matt Gordon

Mrs. W. G. Carty

Mrs. Ely Cole

The rush week cruise on the Good Ship Tri-J was begun Tuesday, November 20, when the crew was entertained with a colonial bridge by Ditmore and Bishop. Wednesday evening, a seven o'clock dinner was served at the home of Mrs. E. E. Brown. At nine o'clock Friday night, all hands were on deck at the Legion Hall, with helpmates Carty, Cole, and Gordon. On the following Saturday at eight o'clock was the pirate party with cruisers Tubb, Sponhaltz and Eaton officiating. At eleven o'clock Sunday the crew attended religious services at the Federated Church.





seventy-four

Baptist Students' Union

OFFICERS

First Semester

VERNON MUSSELMAN

INA CARTER

ETHEL PARKER

ALEDO RENDER

HARRIETT HAMILTON

INA CARTER

MADGE McCAULEY

HOWARD MUSSELMAN

President

First Vice-President

Second Vice-President

Recording Secretary

Corresponding Secretary

Chorister

Pianist

Usher

Second Semester

VERNON MUSSELMAN

INA CARTER

ETHEL PARKER

ALEDO RENDER

HARRIETT HAMILTON

JACOB HEINRICH

MADGE McCAULEY

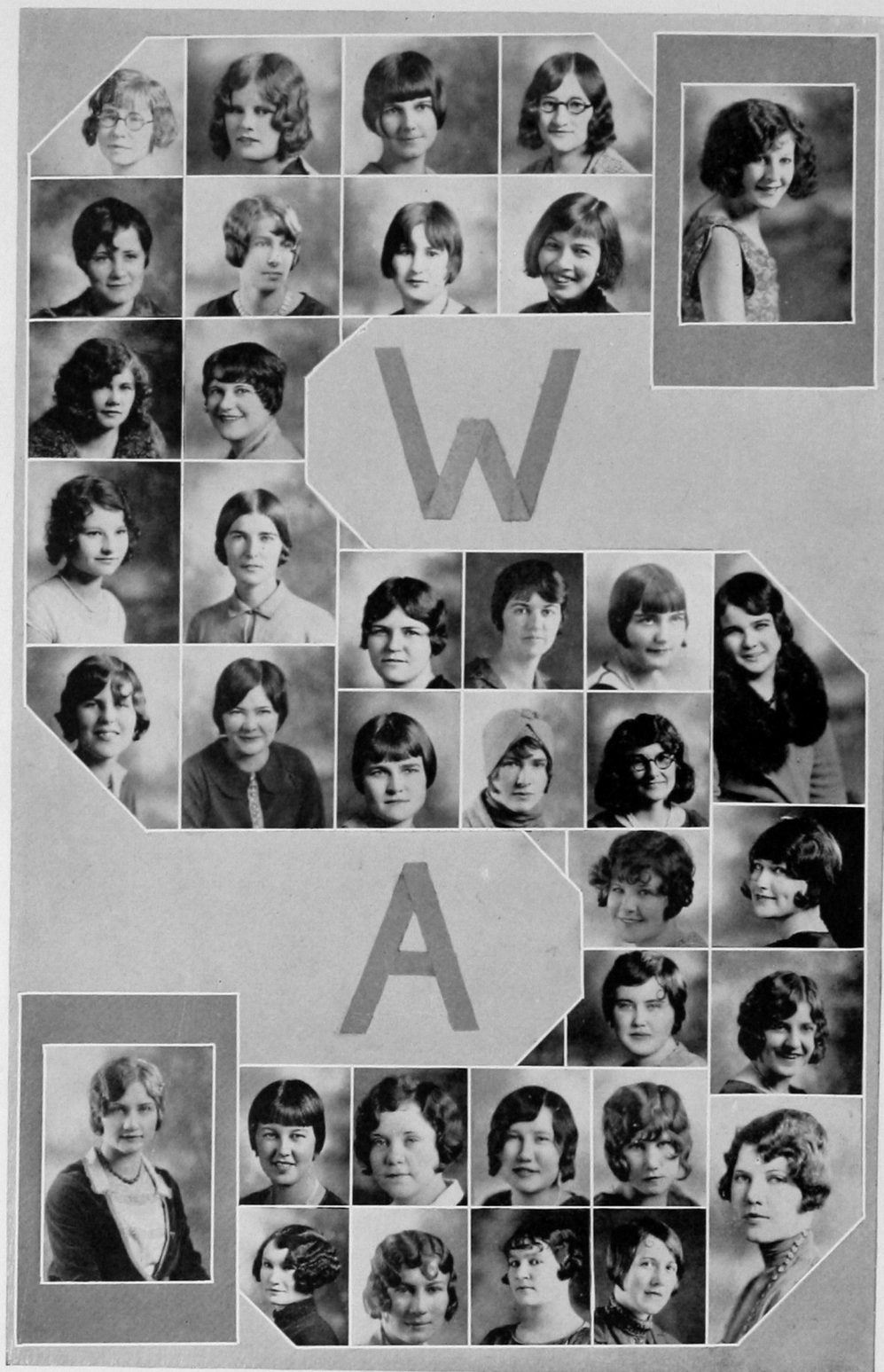
HOWARD MUSSELMAN

MISS DORA STEWART, *Sponsor*

On November 3, 1925, a number of students of Miss Dora Stewart's Bible Class met at her home and organized a Baptist Student's Union. The membership of this Christian organization consists of college students of all denominations.

Our *Great Aim* is to tie the college student to the local church, keep his faith firm, his heart warm, and his affections centered upon Kingdom interests while in college, and to have him return to the local church, after graduation, loyal, faithful, true, and efficient in the program of his church, his denomination and Kingdom forces.

We dedicate these pages to Miss Stewart, our loyal helper, and sponsor, whose home was open to use for weekly meetings and socials.



seventy-six

Women's Athletic Association

OFFICERS

First Semester

ANNA MAY HANEY
GLADYS JARVIS
ROBERTA DUNN

President
Vice-President
Secretary-Treasurer

Second Semester

ANNA MAY HANEY
MARY JARVIS
FLORENCE ROESLER

MEMBERS

Martha Allred
Clara Bryan
Ester Bradshaw
D'Lila Cannon
Claris Clark
Bessie Clark
Effie Dunn
Roberta Dunn
Gladys Fletcher
Ethel Hayes
Anna May Haney
Elgin Hardin
Bernice Hardin
Hulda Horst
Mary Jarvis
Gladys Jarvis
Gladys Larkin

Modelle Lancaster
Isabelle Lomenick
Freida Lehman
Ruth Ann Morgan
Alma Miller
Rose Marie McDaniel
Leone Ratcliffe
Florence Roesler
Nina Roberts
Altha Taylor
Leila Taylor
Emma Jane Taylor
Lola Welch
Susie Welch
Bessie Werts
Vyola Williams
Kathryn Young

The purpose of the Women's Athletic Association is to promote higher physical efficiency among the girls of the college. It is a student organization consisting of girls who are interested in athletics. Any girl in the college is eligible for membership if she is of good moral standing. The only requirement of the club is that the girl must earn one hundred points in some sport before she is considered a pledge. A pin is awarded to the girl who has succeeded in earning four hundred points. To obtain a lettered sweater one thousand points are required, and for a blanket, two thousand points. Points are earned in sports such as hiking, volley ball, basketball, tennis, hockey, baseball, horseback riding, and swimming.



Eromathian Club



Motto—"Que non proficit deficit"

Colors—Purple and White

Flower—White Carnation

OFFICERS

First Semester
WINNIFRED ROBINS
FLORENCE ROESLER
LACLIDA COTTER

President
Vice-President
Secretary-Treasurer

Second Semester
FLORENCE ROESLER
GLADYS SMITH
AGNES CUNNINGHAM

MISS GLADYS MOSBURG, *Sponsor*

MEMBERS

LaClida Cotter
Agnes Cunningham
Effie Lunn
Roberta Dunn
Elgin Hardin
Madge McCauley

Gladys E. Mosburg
Katherine Peckham
Winnifred Robins
Florence Roesler
Gladys Smith
Mary Vosburgh

ASSOCIATE MEMBERS

Mary Harrison
Anna Snoddy

Mrs. J. C. M. Krumtum
Bessie Yeoman

The purpose of the Eromathian Society is to promote friendship and scholarship among the college girls.

seventy-eight

Bull Pup Pep Club



OFFICERS

ISABELLE DRAY
FRANCINA RUHL
EDNA EARL WRIGHT
MAXINE BURT

President
Secretary
Yell Leader
Sponsor

ACTIVE MEMBERS

Frances Avritt
Florence Albin
Maxine Burt
Clara Boyd
Sadie Bates
Marion Cunningham
Florence Cunningham
Isabelle Dray
Virginia Dobyns
Elizabeth Dobyns
Helen Wayne Guess
Dora Gardiner

Thelma Hatchett
Elizabeth Hewlett
Ethel Hayes
Doris Keown
Minnie Lee Melton
Ruth Mitchell
Corrinne Meacham
Cleo Masoner
Dona Marshall
Oma McInturff
Velma Miller
Maurine Post
Lucile Post

Barbara Perring
Ruth Royse
Elinor Renz
Gladys Rogers
Francina Ruhl
Irene Stine
Anna Maude Street
Josephine Sugden
Emma Jane Taylor
Valeska Thomas
Pauline Waller
Edna Earl Wright

College Band



OFFICERS

BART WOODS
GLEN WOODS
MARY FORBES
GEORGE M. CRISP

President
Vice-President
Secretary-Treasurer
Director

MEMBERS

Cornet

Clyde Shannon
Samuel Nobles
Ephraim Dickson
Eugene Medley
Mason Howe
Paul Kelly
Frederick Hancock
Bartlett Ward

Baritone

L. L. Shaw

Clarinet

Harry Baublits
Milo Crossman

Trombone

Waldo Bader
Bart Woods
Everett Grounds
Argyle McLauchlin

French Horn

Mary Forbes
Ruth Sanders

Alto Saxophone

Willard Smith
Glen Woods
William Stewart

Tuba

C. L. Nikkel
Kermit Evans

Drums

Adolph Bollenbach
Harry Gardiner

College Orchestra



MEMBERS

FIRST VIOLINS

Jessie Mae Bobo
Joy McCorkle
Carolyn Randle
Maurine Chance

SECOND VIOLINS

Anna Hoerman
Leona Cotter
Margaret Howe
Charles Krumtum

FIRST CORNETS

Clyde Shannon
Theodore Peckham
Bartlett Ward

SECOND CORNETS

Frederick Hancock
Mason Howe
Paul Kelly

CLARINETS

Harry Baublits

SAXOPHONES

Bill Stewart
Glenn Woods

TROMBONES

Bart Woods
Argyle McLauchlin
Rudie Janzen

DRUMS

D'Lila Cannon

PIANO

Marion Colegrove
Lois Lawrence

CONDUCTOR

Mrs. Joe Milam

What would we do without it? It furnishes the entertainment before, during, and after our college programs. The College Orchestra is one of the many organizations on the campus which adds its bit toward entertaining the public, as well as giving all students the opportunity to do ensemble work preparatory to conducting similar organizations in the community in which they expect to teach.

eighty-one

Women's Glee Club



FIRST ROW: Anna Maude Street, Selma Wellman, Clara Boyd, Reven DeJarnette, Director, Helen Wayne Guess, Esther Schilberg, Hulda Horst

SECOND ROW: Mary Jarvis, Marian Cunningham, Juanita Buchanan, Marian Colegrove, Frances Avritt, Harriette Hamilton

THIRD ROW: Margaret Emanuel, Leone Ratcliffe, Gladys Larkin, Gladys Jarvis, Ina Marie Carter, Susan Groves

FOURTH ROW: Arlene Davis, Mary Vosburgh, Elsie Raasch, Agnes Cunningham, Florence Roesler, Ruth Crall

The Women's Glee Club is the oldest active women's club on the campus. This is an organization which truly functions. Regular rehearsals are held throughout the year with occasional public performances. The club aims at perfection in choral singing and appears only when well prepared. Membership is gained through examination, therefore the club represents but a fraction of the number who try out each year. Within the club there are formed smaller units, such as quartets and trios. The club this year is also represented by several excellent soloists.

Triangular Debate



Question: Resolved that a substitute should be adopted for trial by jury.

AFFIRMATIVE

Milton Keen
E. Mason Howe

NEGATIVE

Hurshal Risinger
Rudy Janzen

NEGATIVE

Gertrude McCulloch
William Stewart

Affirmative team debated Northwestern Negative at Alva, April 26.

Negative team debated Central affirmative at Edmond, April 26.

Our non-conference debates were held with McMurry College, Abilene, Texas, March 1; with Southwestern College of Winfield, Kansas, March 20, and with Oklahoma College for Women at Chickasha, Oklahoma, March 23.

The Southwestern

VOLUME 20

WEATHERFORD, OKLAHOMA, JANUARY 28, 1929

No. 15

ENROLLMENT AT SOUTHWESTERN SHOWS INCREASE

Seventy-Nine New Students Have Entered Since New Term Began

DEPARTMENTS CROWDED

Only Students of College Rank Are Wanted in Official Record

The first term of the second year classes began Monday, January 21, at the college. The departments were crowded and the students were very happy. The only students of college rank are wanted in the official record.

The first term of the second year classes began Monday, January 21, at the college. The departments were crowded and the students were very happy. The only students of college rank are wanted in the official record.

The first term of the second year classes began Monday, January 21, at the college. The departments were crowded and the students were very happy. The only students of college rank are wanted in the official record.

The first term of the second year classes began Monday, January 21, at the college. The departments were crowded and the students were very happy. The only students of college rank are wanted in the official record.

The first term of the second year classes began Monday, January 21, at the college. The departments were crowded and the students were very happy. The only students of college rank are wanted in the official record.

The first term of the second year classes began Monday, January 21, at the college. The departments were crowded and the students were very happy. The only students of college rank are wanted in the official record.

The first term of the second year classes began Monday, January 21, at the college. The departments were crowded and the students were very happy. The only students of college rank are wanted in the official record.

Students Art Class

There is to be a student art show in the art department. The students are very happy and the show is very successful.

Next Year's Lyceum Course is Set

The lyceum course for next year is set. The students are very happy and the course is very successful.

Overrated Progress in Plays, Musical Numbers, Lectures

At a meeting of the combined students and faculty, the progress in plays, musical numbers, and lectures was discussed. The students are very happy and the progress is very successful.

At a meeting of the combined students and faculty, the progress in plays, musical numbers, and lectures was discussed. The students are very happy and the progress is very successful.

At a meeting of the combined students and faculty, the progress in plays, musical numbers, and lectures was discussed. The students are very happy and the progress is very successful.

At a meeting of the combined students and faculty, the progress in plays, musical numbers, and lectures was discussed. The students are very happy and the progress is very successful.

At a meeting of the combined students and faculty, the progress in plays, musical numbers, and lectures was discussed. The students are very happy and the progress is very successful.

At a meeting of the combined students and faculty, the progress in plays, musical numbers, and lectures was discussed. The students are very happy and the progress is very successful.

Variation of Popular Campaign Song in Vogue at Southwestern



WEATHERFORD IS PRESENTED WITH NEW WHITE WAY

Southwestern Light and Power College Class Will Donate \$1,000 on the Improvement

MAIN NOW WEATHERFORD

The main now weatherford is presented with a new white way. The students are very happy and the improvement is very successful.

The main now weatherford is presented with a new white way. The students are very happy and the improvement is very successful.

The main now weatherford is presented with a new white way. The students are very happy and the improvement is very successful.

The main now weatherford is presented with a new white way. The students are very happy and the improvement is very successful.

The main now weatherford is presented with a new white way. The students are very happy and the improvement is very successful.

The main now weatherford is presented with a new white way. The students are very happy and the improvement is very successful.

Students Art Class

There is to be a student art show in the art department. The students are very happy and the show is very successful.

Next Year's Lyceum Course is Set

The lyceum course for next year is set. The students are very happy and the course is very successful.

Overrated Progress in Plays, Musical Numbers, Lectures

At a meeting of the combined students and faculty, the progress in plays, musical numbers, and lectures was discussed. The students are very happy and the progress is very successful.

At a meeting of the combined students and faculty, the progress in plays, musical numbers, and lectures was discussed. The students are very happy and the progress is very successful.

At a meeting of the combined students and faculty, the progress in plays, musical numbers, and lectures was discussed. The students are very happy and the progress is very successful.

At a meeting of the combined students and faculty, the progress in plays, musical numbers, and lectures was discussed. The students are very happy and the progress is very successful.

At a meeting of the combined students and faculty, the progress in plays, musical numbers, and lectures was discussed. The students are very happy and the progress is very successful.

At a meeting of the combined students and faculty, the progress in plays, musical numbers, and lectures was discussed. The students are very happy and the progress is very successful.

At a meeting of the combined students and faculty, the progress in plays, musical numbers, and lectures was discussed. The students are very happy and the progress is very successful.

CLASSES CHOOSE CANDIDATES FOR POPULARITY RACE

Students, Cunningham, Cooper, Dray, Represented Seniors And Juniors

POLL OPEN THURSDAY

"Rough" and "Frustrated" Subject Harris, Dumas, Randall And Ayres

The voting for the popularity race is open. The students are very happy and the race is very successful.

The voting for the popularity race is open. The students are very happy and the race is very successful.

The voting for the popularity race is open. The students are very happy and the race is very successful.

The voting for the popularity race is open. The students are very happy and the race is very successful.

The voting for the popularity race is open. The students are very happy and the race is very successful.

The voting for the popularity race is open. The students are very happy and the race is very successful.

The voting for the popularity race is open. The students are very happy and the race is very successful.

The voting for the popularity race is open. The students are very happy and the race is very successful.

HIGH SCHOOL PRESENT OPERETTA

Over 100 Dances and Songs By the Chorus From the First Entertainment

The high school is presenting an operetta. The students are very happy and the performance is very successful.

The high school is presenting an operetta. The students are very happy and the performance is very successful.

The high school is presenting an operetta. The students are very happy and the performance is very successful.

The high school is presenting an operetta. The students are very happy and the performance is very successful.

The high school is presenting an operetta. The students are very happy and the performance is very successful.

The high school is presenting an operetta. The students are very happy and the performance is very successful.

The high school is presenting an operetta. The students are very happy and the performance is very successful.

The high school is presenting an operetta. The students are very happy and the performance is very successful.

HIGH SCHOOL PRESENT OPERETTA

Over 100 Dances and Songs By the Chorus From the First Entertainment

The high school is presenting an operetta. The students are very happy and the performance is very successful.

The high school is presenting an operetta. The students are very happy and the performance is very successful.

The high school is presenting an operetta. The students are very happy and the performance is very successful.

The high school is presenting an operetta. The students are very happy and the performance is very successful.

The high school is presenting an operetta. The students are very happy and the performance is very successful.

The high school is presenting an operetta. The students are very happy and the performance is very successful.

The high school is presenting an operetta. The students are very happy and the performance is very successful.

The high school is presenting an operetta. The students are very happy and the performance is very successful.

Foods Department Sees Demonstration

The foods department is seeing a demonstration. The students are very happy and the demonstration is very successful.

The foods department is seeing a demonstration. The students are very happy and the demonstration is very successful.

The foods department is seeing a demonstration. The students are very happy and the demonstration is very successful.

The foods department is seeing a demonstration. The students are very happy and the demonstration is very successful.

Reading Co With Gra

The reading co is with gra. The students are very happy and the reading is very successful.

The reading co is with gra. The students are very happy and the reading is very successful.

The reading co is with gra. The students are very happy and the reading is very successful.

Reading Co With Gra

The reading co is with gra. The students are very happy and the reading is very successful.

The reading co is with gra. The students are very happy and the reading is very successful.

The reading co is with gra. The students are very happy and the reading is very successful.

The Southwestern Staff Members

FIRST SEMESTER

First Term

CLYDE SHANNON
MRS. ALMA KRUMTUM
MISS ELSIE SHOEMAKER

Editor

Assistant Editor

Instructor

Second Term

MINNIE LEE MELTON
ISABELLE DRAY
MISS ELSIE SHOEMAKER

SECOND SEMESTER

First Term

ISABELLE DRAY
WINNIFRED ROBINS
MISS GRACE JENCKE

Editor

Assistant Editor

Instructor

Second Term

CLYDE SHANNON
WINNIFRED ROBINS
MISS GRACE JENCKE

REPORTERS

Marie Ames
Irma Baker
Roscoe Belcher
Ovis Cooke
Isabelle Dray
Effie Dunn
Mark Ford
Donald Groves
Elgin Hardin
Mrs. Eunice Kizer
Milton Keen

Mrs. Alma Krumtum
Charles Love
Minnie Lee Melton
Ruth Mitchell
Winnifred Robins
Florence Roesler
Clyde Shannon
Edward Stevens
David Spencer
Pauline Waller
Susie Welch

Mrs. Minerva Williams

OUR CREED

We believe in Southwestern, the school, the district, the paper.

We believe in loyalty to all the laws and traditions of the college.

We believe in making the paper a voice of the student body and school as a whole.

We believe in fair play to everyone, and in stating only facts, and those clearly, accurately, and in a straightforward manner.

We believe our paper should serve as a balance wheel to unite all forces in the college into one steady movement for the continual betterment of Southwestern.

Oracle Staff



CLYDE E. SHANNON
Editor-in-Chief

CATHERINE PERRING
Assistant Editor

LEE RATCLIFFE
Business Manager

GUY L. BROWN
Assistant Bus. Manager

SPONSORS

Magnolia Gee

Grace Jencke

Myrtle Umphress

ASSOCIATE EDITORS

Top Row

Gladys Smith *Senior*
Clinton Parr *Junior*
Orlo Roberds *Sophomore*
Anna May Haney *Freshman*
Hurshal Risinger *Calendar*

Bottom Row

Otto G. Igo *Athletic*
La Clida Cotter *Organization*
Clarence Auxier *Art*
John Waldrip *Assistant Art*
Thelma Hatchett *Feature*





Favorites



FLORENCE CUNNINGHAM
MOST POPULAR





IRMA BAKER
MAY QUEEN



WILLIAM T. STEWART
ROBIN HOOD



SADIE BATES
Football Queen



THELMA HATCHETT
FRESHMAN QUEEN

On Beauty

*God scatters beauty as He scatters flowers
O'er the wide earth, and tells us all are ours,
A hundred lights in every temple burn,
At each shrine I bend my knee in turn.*

Walter Savage Landor.



Features

Popular Candidates

Isabelle Dray

Mamie Dumas

Frances Avritt



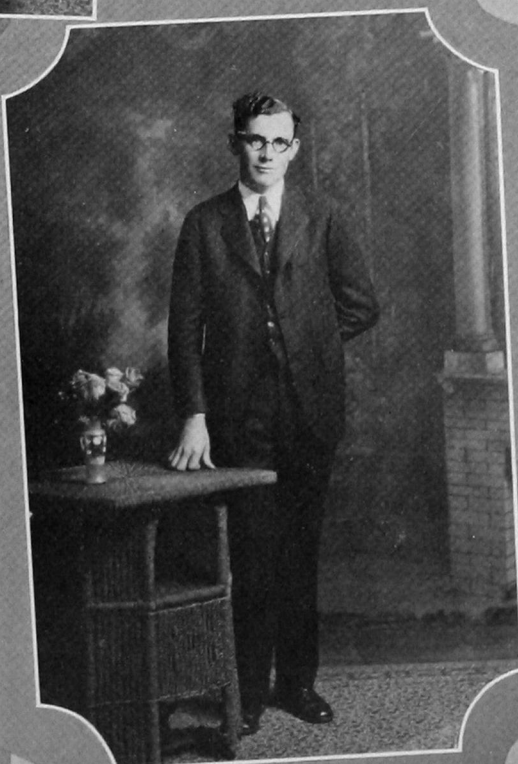
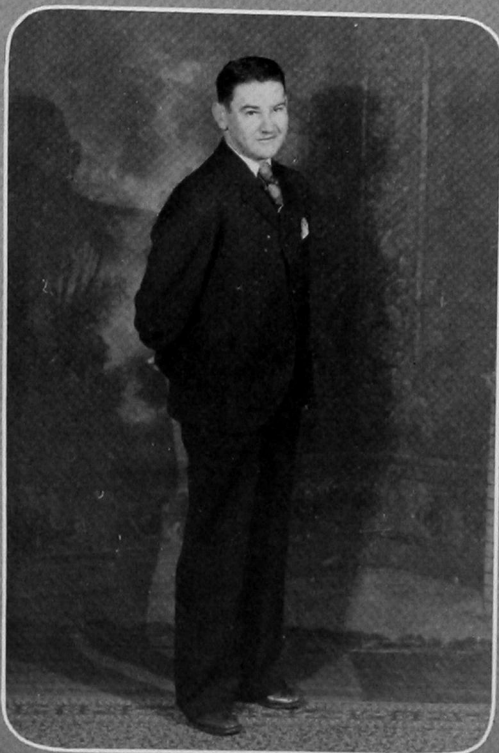
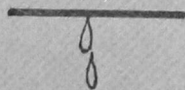


Popular Candidates

Albert "Kid" Harris

Bryan "Pete" Cooper

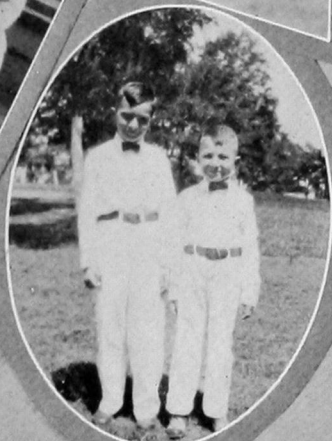
Edwin "Happy" Askins



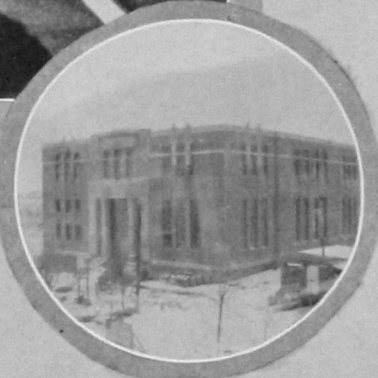
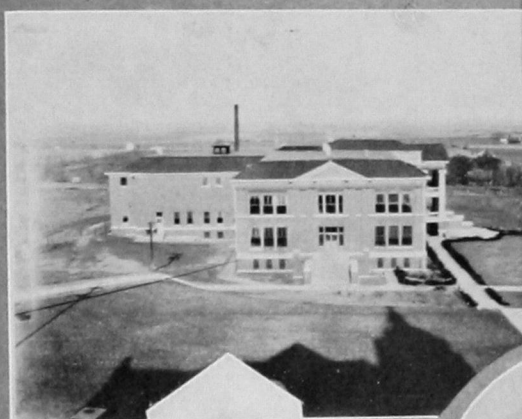
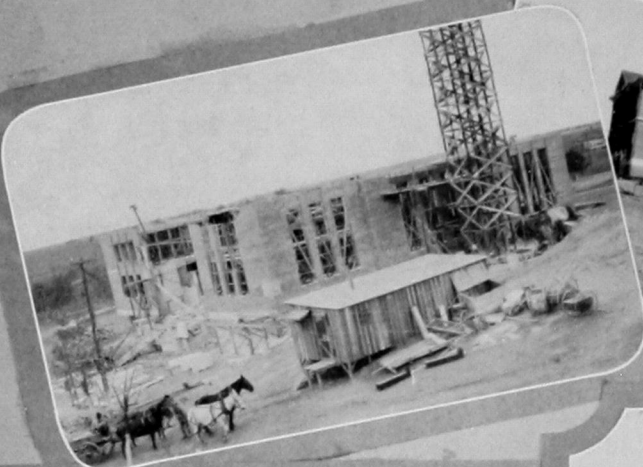


Faculty

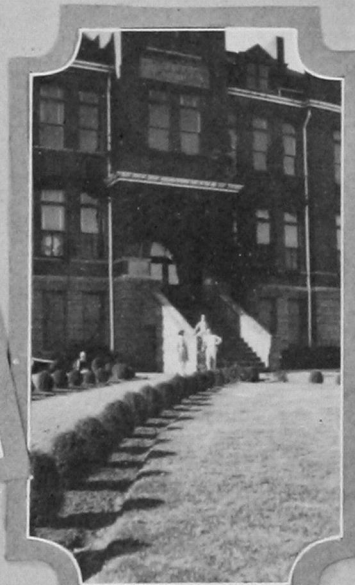
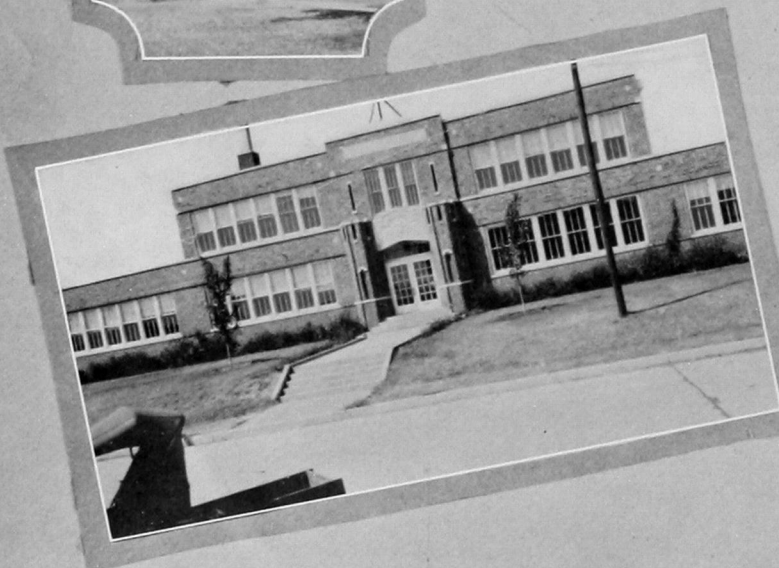




Faculty-ettes
—
C



Campus





Faces





Gentle-men





Pals





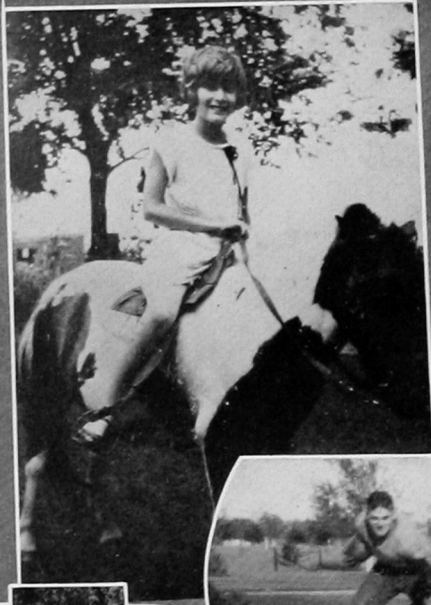
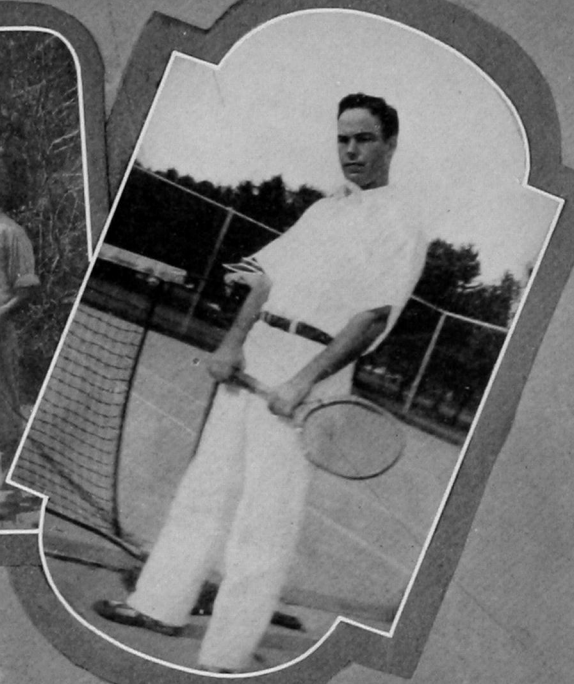
"In the Summer"





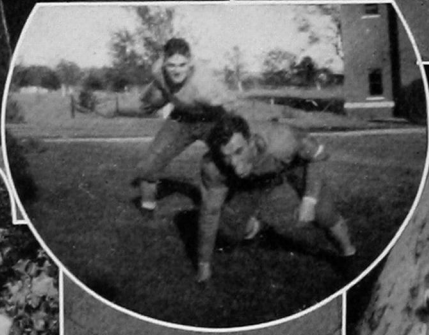
While out of
School

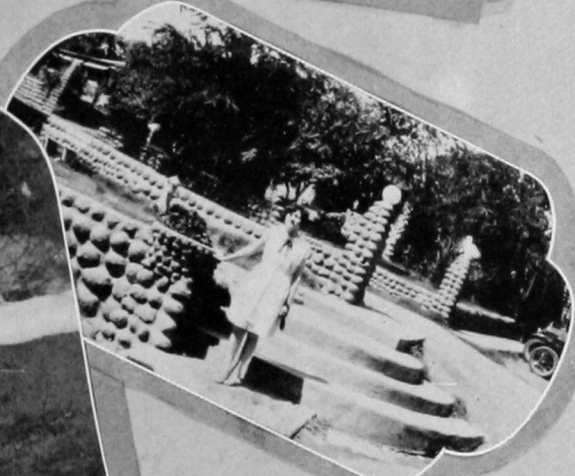




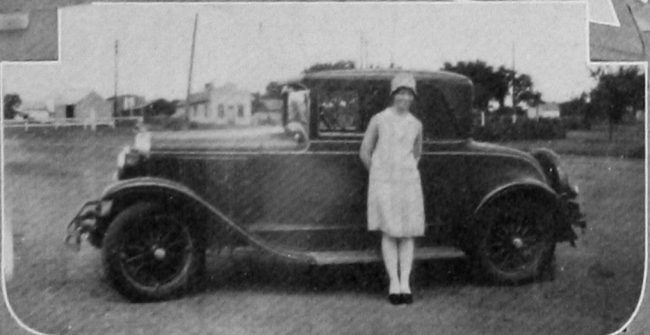
Summer Sports

7



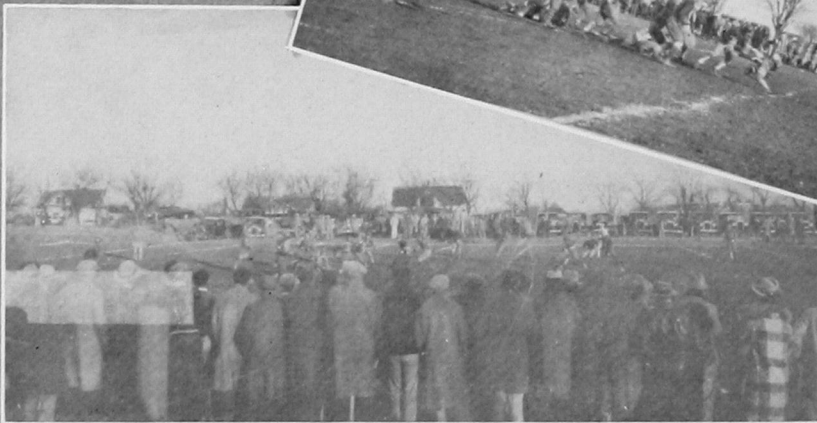


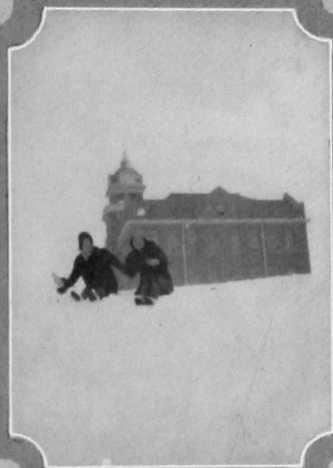
Recreations





"They went in
Groups"
5





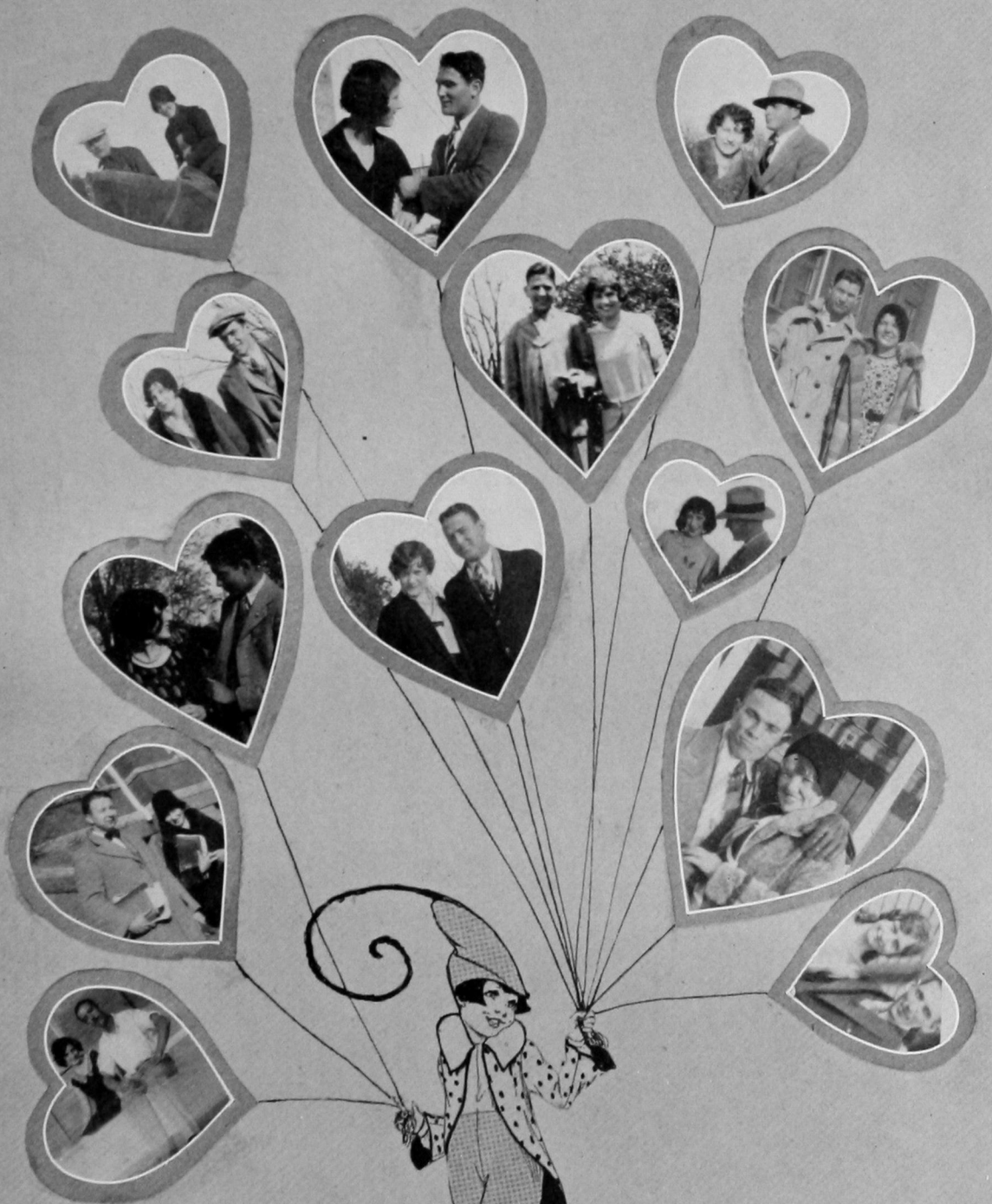
4 Below





Smiles





Sweet

Hearts





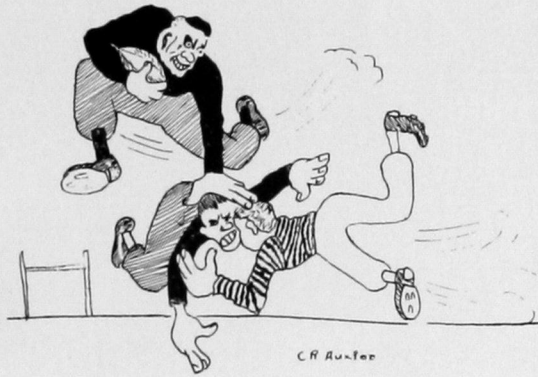
The Spirit



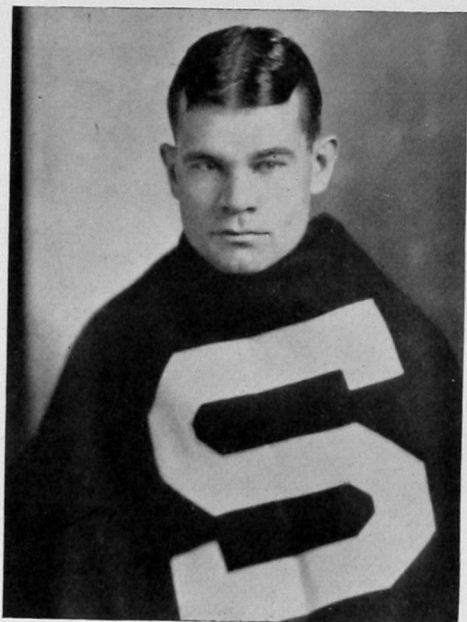


Athletics

This page intentionally left blank.



Football



CAPTAIN

Neil Adkins, Hydro, End

Neil was a fine leader and always kept the team fighting in victory or defeat. The opposition earned all of the yards they gained around his end. His coach said of him, "I wouldn't want a better captain. I never have to worry about his grades."

BULLDOG ELEVEN

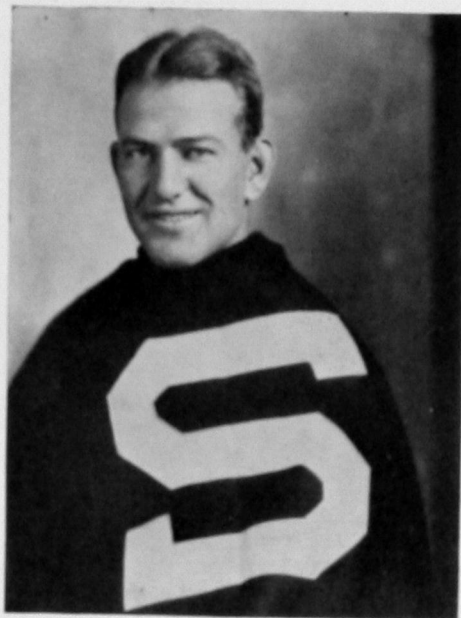


one hundred fourteen

CAPTAIN-ELECT

Donald Groves, Watonga

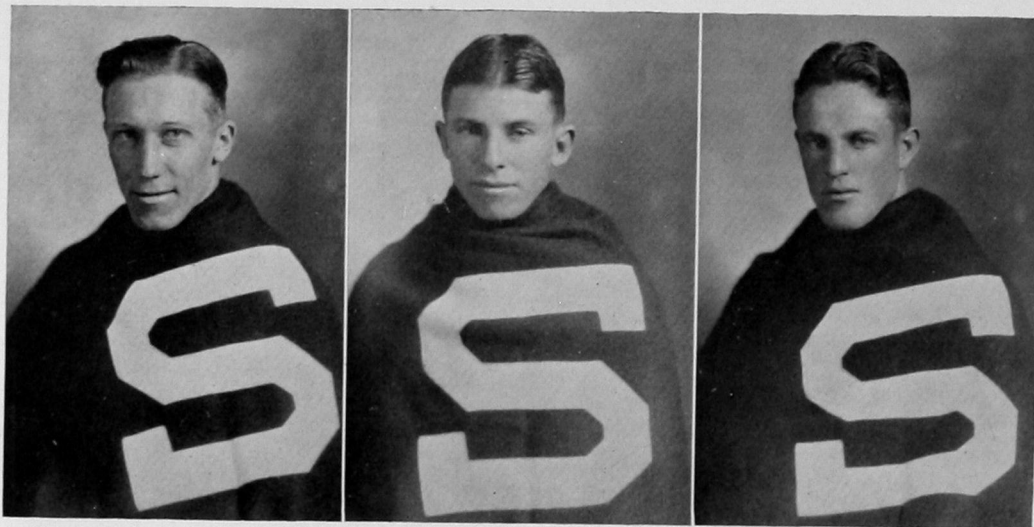
"Three Down Don," was a peer of strength on defense and offense alike. He has the fighting spirit of a genuine Bulldog and will be hard to beat as a leader. He is one of the smartest football men ever to wear the White and Blue.



BULLDOG SQUAD



one hundred fifteen



JOE D. REYNOLDS, Weatherford. "Monkey Joe" is one of the best ends in the conference and plays equally well in the backfield. He is a good trainer and a smart ball player. When Joe tackles them, they know they are hit.

D. DOWDY, Duke, Halfback, is very fast and elusive. Although D. is the smallest man on the squad, he has the distinction of gaining more yards than any other man on the team.

TED LINVILLE, Sayre, Halfback. Lindy is fast and a good ground gainer. He runs interference well and catches passes well. After he carries the ball, they measure the distance gained in rods instead of yards.



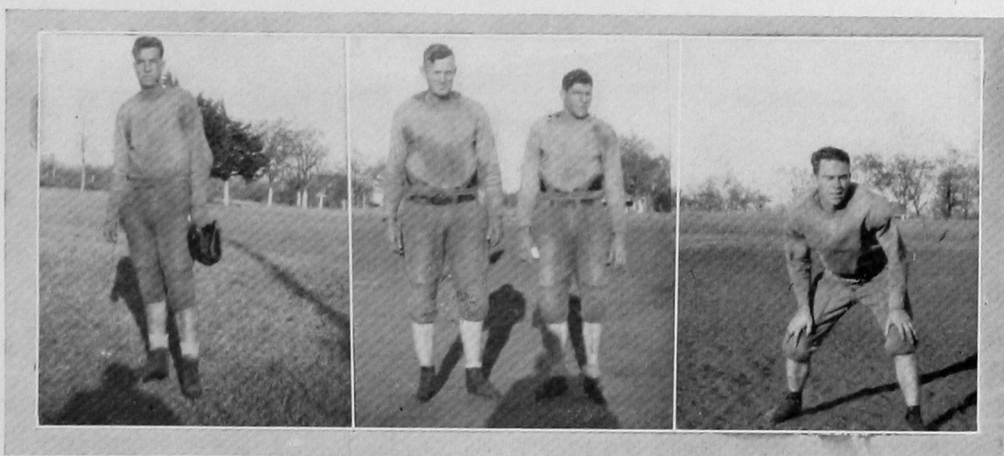
one hundred sixteen



WALTER HEARD, Weatherford, Guard. "Wads" is a hard fighter and a good trainer. He puts his heart in the game and does equally well on offense and defense. He has three more years.

"PUSS" BRYAN, Cordell, Tackle, made a great comeback this year after being out of school three years. He was the giant of the line and filled his position expertly.

CARROL WRIGHT, Cordell, Quarterback. Frog was fast and a good field general. He likes the game and will make someone a good coach. He was lost by graduation.



one hundred seventeen



BRYON COOPER, "The Capital City", Fullback. Pete is a good line plunger and passer. The Bulldogs won every game in which Pete started as fullback. CLYDE TAYLOR, Weatherford, Guard, was in there battling all the time. He used his head well and was a tower of strength on defense. He has two more years.

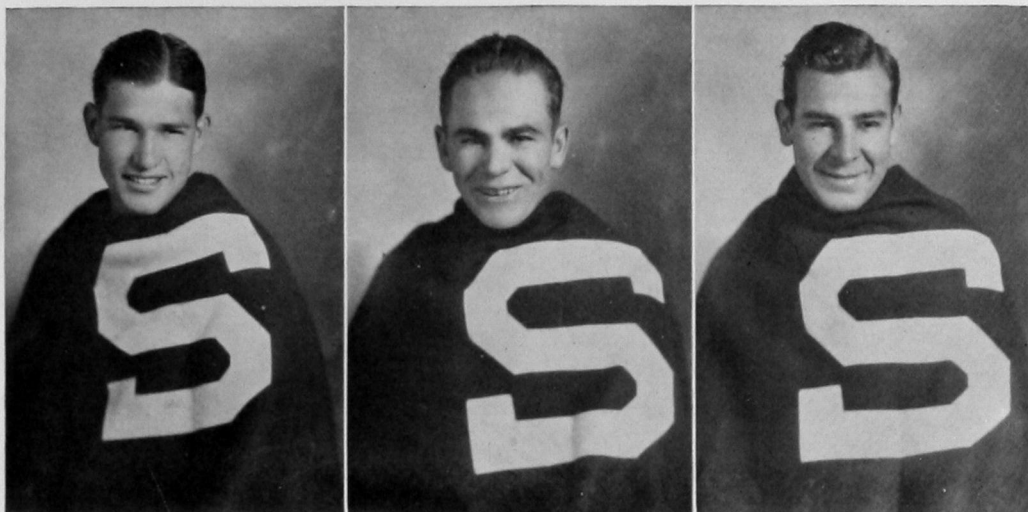
JOE CURB, Hollis, Fullback. "Big Joe" is a good ground gainer and would rather run over a man than go around.

ROSCOE BELCHER, Chickasha, Fullback. Bo was the best interference man on the team. He was lost by graduation.

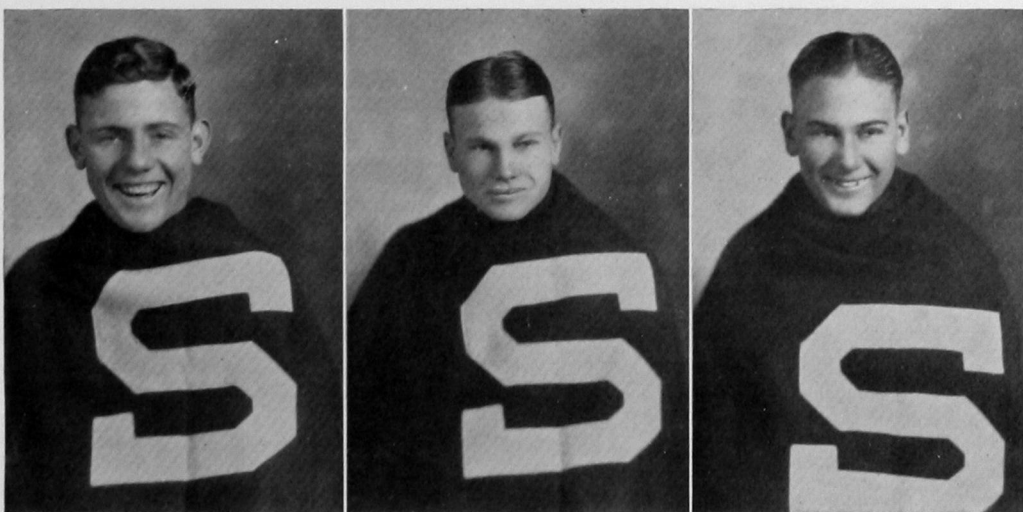
HERSCHAL MOORE, Weatherford, Halfback. Pete is fast and a good passer. He punts well and is a good ground gainer. He has two more years.

BILL STEWART, Weatherford, Quarterback. He is a good passer and field general. Although only eligible for the last two games, he made his letter and gave a good account of himself. He has two more years.

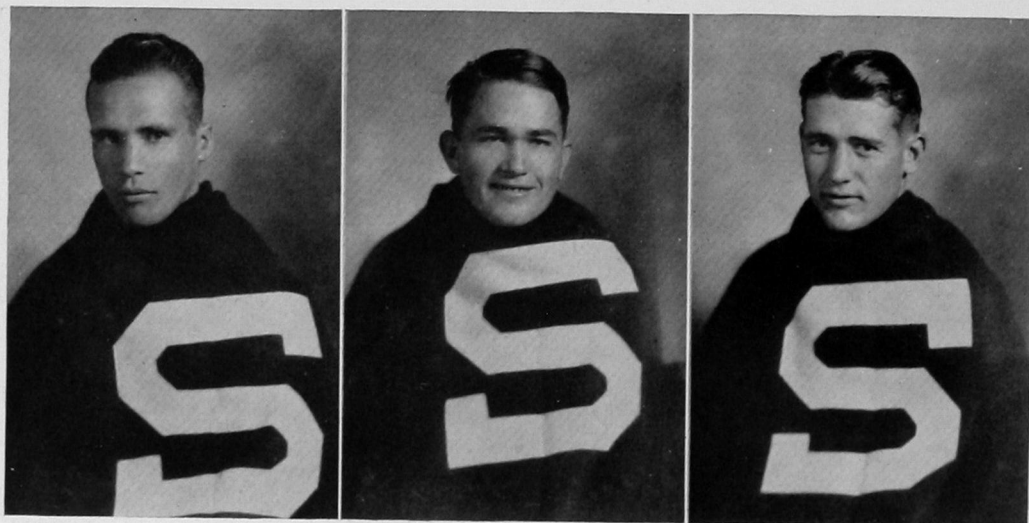




GRADY JACKSON, Altus, Center. Although Jack did not letter this year, great things are expected of him in the future. He has three more years.
 TOMMY LAUDERDALE, Sayre, End. As a defensive end, he ranks with the best. With a little more experience he will be hard to beat.
 SUMMER KOKER will be remembered by his good defensive play at tackle during the O. B. U. game, Thanksgiving day. Koker is from Mt. View.
 RED KIZZAR, Victory, Tackle. This was Red's first year to go out for football. He is big, fast and a hard fighter. He has three more years.
 RED CARTWRIGHT, Hydro, End. Red is small and fast. As a pass catcher he can't be beat. He saved the day against Northwestern.
 LAWRENCE LUNDY, Weatherford, Guard. He has plenty of fight and should make a good man next year. He is a freshman.



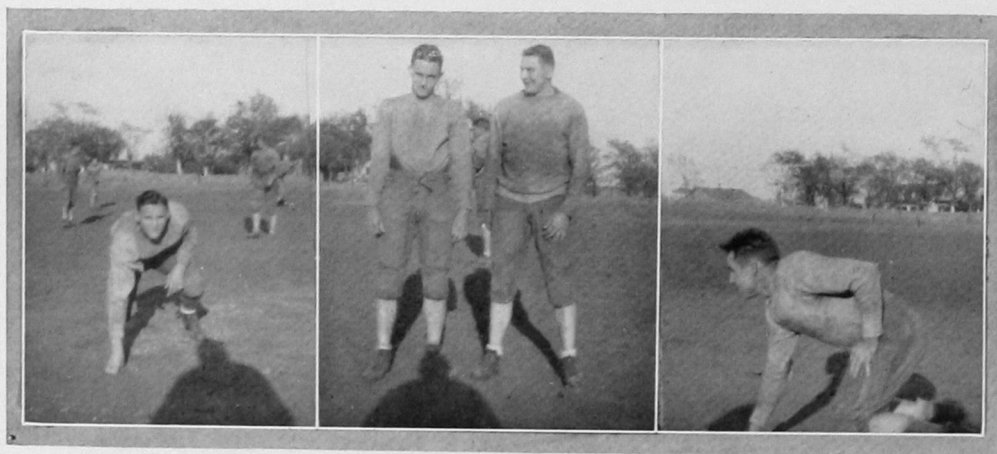
one hundred nineteen



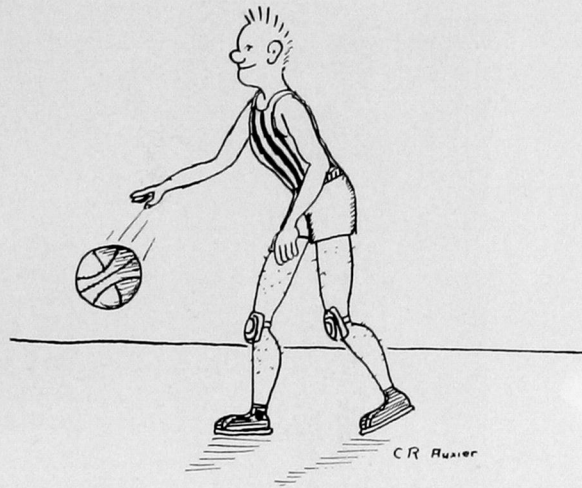
RILEY BURNS, Mountain View, Guard. "Cow" is a good steady boy and with a little more determination would make a fine lineman.

NONA ROMAN, Hydro, Guard. Spike is big, a good trainer, and will make good with a little more experience.

RED COTTER, Weatherford, Fullback. Red is a good ground gainer and a fair passer. He has three more years.



one hundred twenty



Basketball



COACH

J. Rankin Williams

Coach Williams heads the department and is successful in developing winning teams. In five years his teams have held two state championships. His ideals are for clean sportsmanship and hard playing. The Rankinmen are successful coaches throughout the Southwest.

ALBERT HARRIS, Guard, Porter, played a good all around game. He has two more years.

BYRON COOPER, Co-Captain elect, Arapaho. "Pete" is a floor guard of outstanding ability. In the Phillips game he proved to be the "Ace in the Hole". He was mentioned for an all-state position.

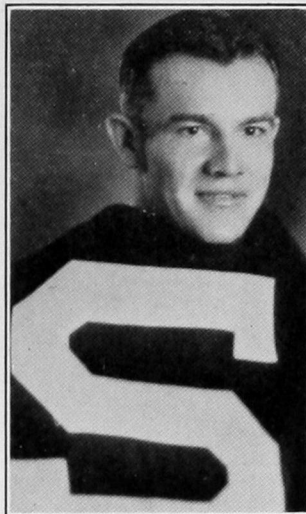
GRADY JACKSON, Guard, Altus. Jack was good at getting the tip at center, and crowning them under the basket. This was his first year.



one hundred twenty-two

CAPTAIN

Earl "Lefty" Holt, Forward, Cloud-
chief. Lefty was a good captain. He
led his men in fight and training.
With these qualities coupled with an
average of 14 points per game he was
awarded the position of captain on the
all state second team. Everybody ad-
mired "Lefty" for his consistent train-
ing and because he did not go around
tooting his own horn. He has one more
year.

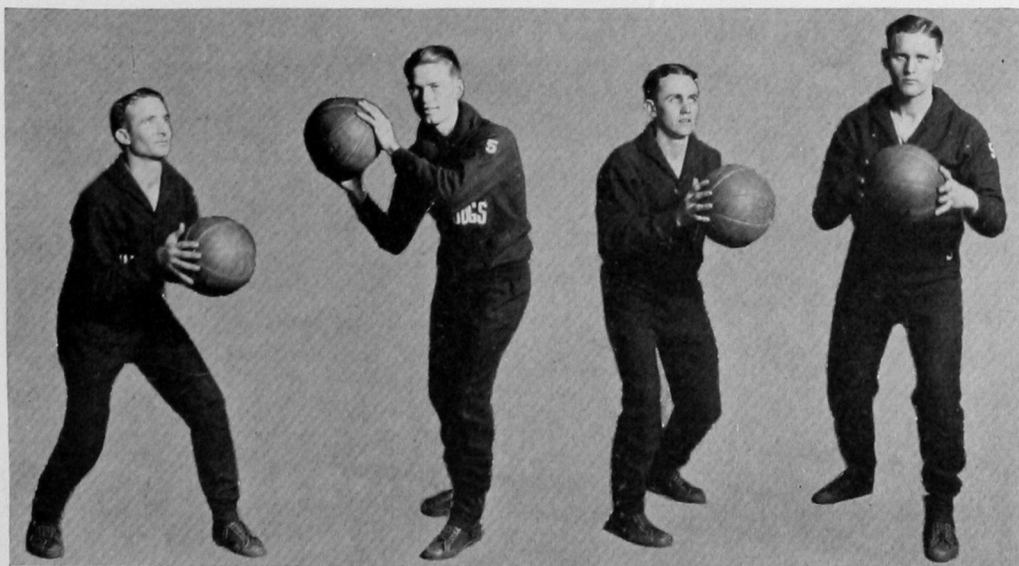


JOHN GOWDY, Co-Captain Elect, Canute. He is the hardest man to stick that
the Bulldogs ever had. He should make a good leader as he has been a good
trainer and a smart player.

OTTO IGO, Forward, Arapaho. "Ott" is capable of playing every position
with equal skill. He is the only one to graduate this year.

HORACE WATSON, Forward, Victory. He is a shifty, versatile floor man of
outstanding ability. He has two more years.

JOE CURB, Forward, Hollis. Big Joe is a hard hustler and should do great
things in the future. He has three more years.



one hundred twenty-three

Season's Results

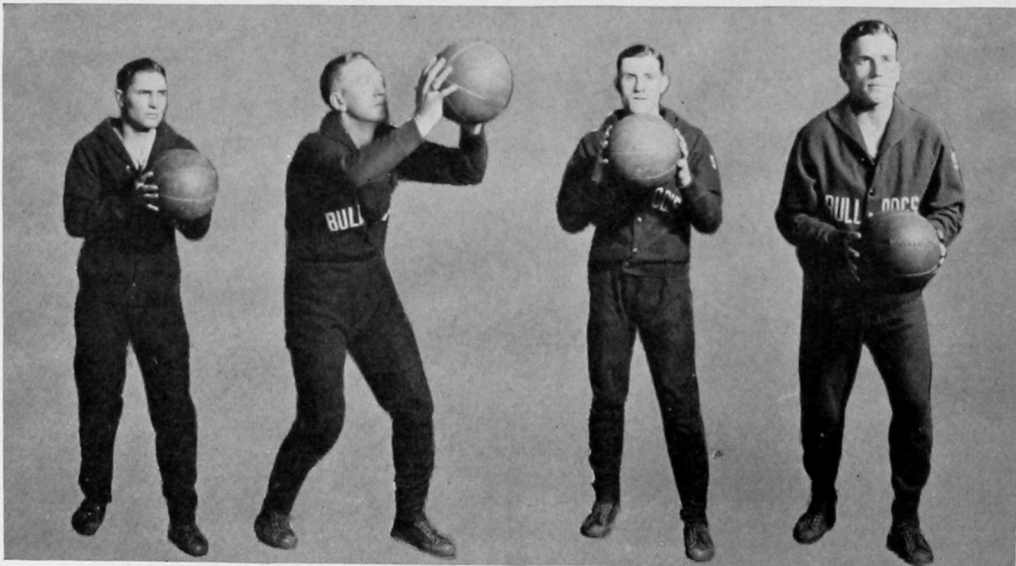
Conference				Non-Conference			
Tulsa	11	27	Southwestern	24	19	Baylor	
Tulsa	27	67	Southwestern	45	46	Baylor	
East Central	28	25	Southwestern	55	17	Howard Payne	
Phillips	45	33	Southwestern	48	17	Howard Payne	
Northwestern	37	35	Southwestern	30	40	Texas University	
Northeastern	28	65	Southwestern	30	15	Abilene Christians	
East Central	50	36	Southwestern	19	24	Daniel Baker	
Oklahoma City	34	37	Southwestern	31	26	Daniel Baker	
Northwestern	33	32	Southwestern	26	28	West Texas	
Central	19	30	Southwestern	26	32	West Texas	
Oklahoma City	36	38	Southwestern				
Central	26	48	Southwestern				
Phillips	30	42	Southwestern				

EPHRAIM DIXON, Forward, Clinton. "Sunmaid" handles the ball well, but was handicapped last season by illness.

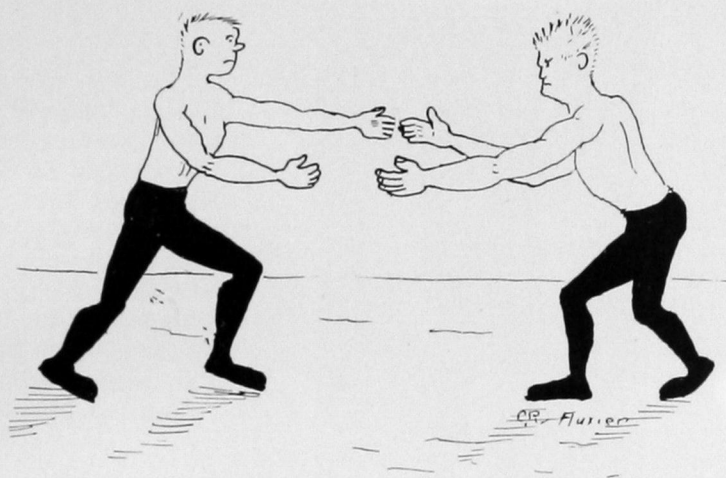
REVERE KENNER, Forward, Cloud Chief. He was a hard fighter and was most valuable in getting the tip off.

ELBERT PATTON, Center, Martha. "Pollock", with a little more experience will be hard to stop.

WILLIAM STEWART, Forward, Weatherford. Bill is a good worker and has two more years before him.



one hundred twenty-four



Wrestling



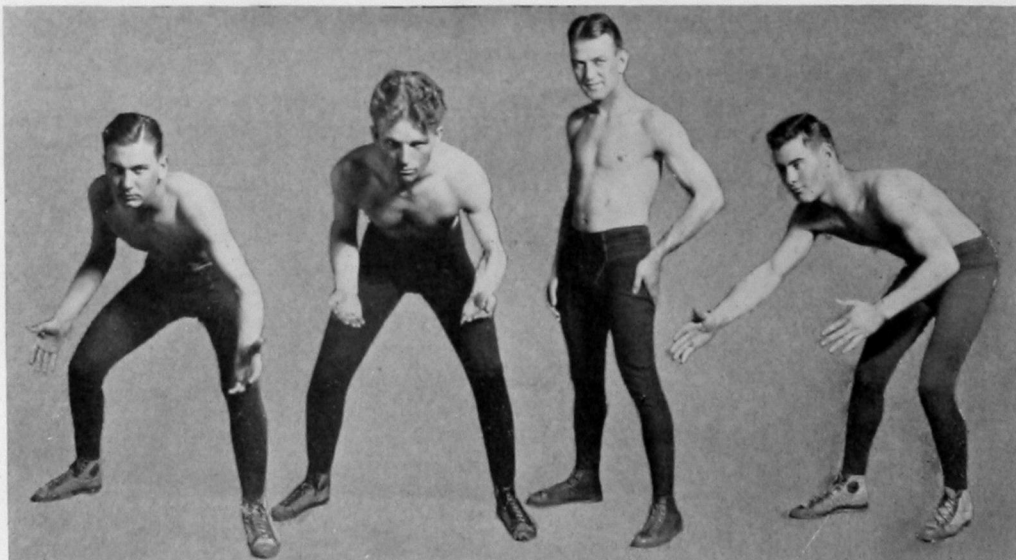
JOE B. MILAM, coach, football, wrestling. For several years Mr. Milam has been coach of football and wrestling. His teams have always ranked high in the conference. In 1926 the Milam men were state champions in football. In wrestling his grapplers are very seldom excelled. There are always two or three who place as all state men. One year there were five. This is a tribute to his ability as a coach.

LAWRENCE LUNDY, 145 pounds, Weatherford. He is a hard worker and trainer. He won third place in the heavyweight division.

JOHN CUNNINGHAM, 135 pounds, Watonga. He broke his shoulder in the tournament and as a result lost the state championship in his weight. He has three more years.

DONALD GROVES, Watonga. Don was one of the cleverest wrestlers on the squad. With a little more training he could have been all state grappler.

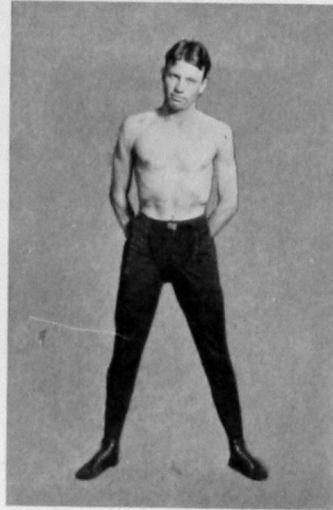
LINWOOD ESTES, 155 pounds, Elk City. He was an aggressive wrestler and fighter. He lost his match in the tournament by only a slight advantage.



one hundred twenty-six

CAPTAIN

MAURICE NORMAN, 125 pounds, Weatherford. Maurice won his second state championship this year. While attending high school he gained considerable experience in the art of wrestling. He is fast, aggressive, and a hard worker. No better man could be wanted to fill the captaincy. He has one more year in college.

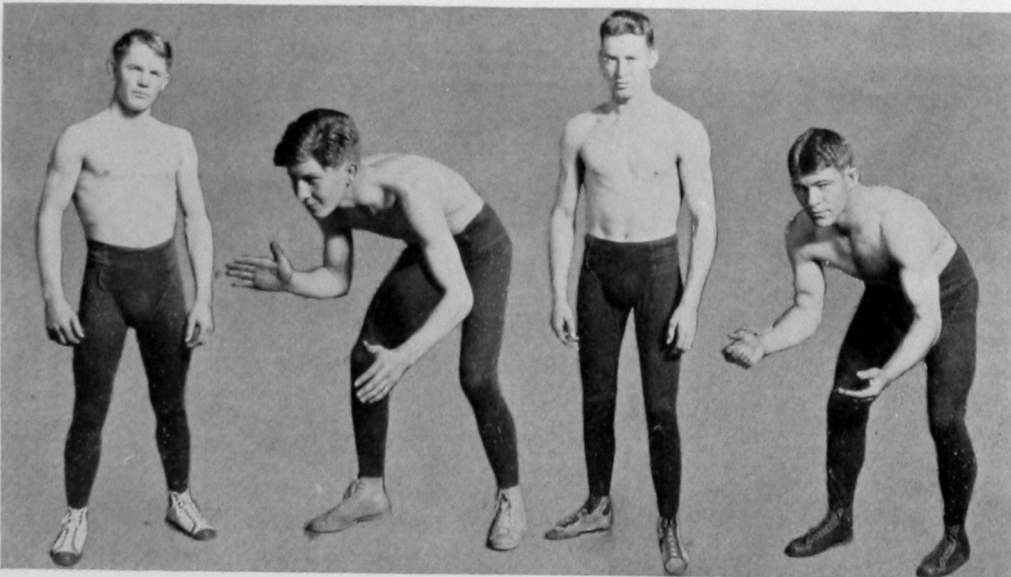


ED HALEY, 135 pounds, Cooperton. Ed is a coming youngster who ought to show some real stuff next year.

MACY DOUGLAS, 115 pounds, Geary. "Doug" won his first letter and with it his first collegiate championship. He is not very big, but big enough to take care of the lightweights. This was his first year.

ROY ANDERSON, 145 pounds, Durham. "Red" won his third consecutive state championship this year. When he tackles them they stay tackled. He has one more year.

EUCLID DOWDY, 175 pounds, Duke. With a little more experience "Pat" should make a fine grappler.



one hundred twenty-seven

Collegiate Wrestling Tournament

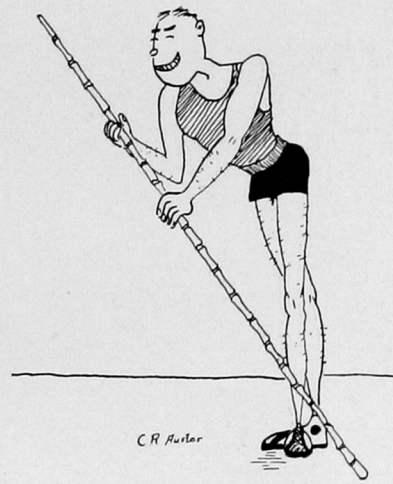
In the first Oklahoma Collegiate conference wrestling meet ever held in Weatherford, Joe Milam's Bulldog grapplers were nosed out by Central by two points. The meet was held here March 14 and 15.

Injuries cheated the Bulldogs out of the championship distinction—"Red" Anderson went into the meet with two ribs that were broken less than a week before and another that had not healed. He displayed the true Bulldog spirit and came through for his third straight state championship. Groves and Cunningham received badly wrenched shoulders in their final matches and went down fighting. These two Southwestern boys while suffering from these painful injuries gave all they had while in the consolation bouts in a vain effort to add enough points to their team to win the championship. Little Macy Douglas from Geary was far superior to any 115 pounder in the state. The midget Bulldog freshman covered himself with laurels that few freshmen ever obtain. Norman of Southwestern easily defeated Johnson of Central to win his second championship.

Watkins of Central was truly a great wrestler and deserves the honor of being state champion in the 155 pound class.

Morgan of the Goldbugs was 165 pound champion and Holt of Central was the best 175 pounder.

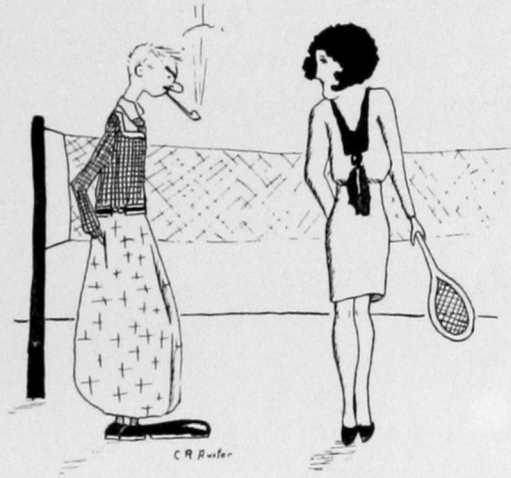
Ashley of Ada won the championship in the heavyweight. Lundy, Bulldog 145 pounder, sprang a surprise by winning third in this weight.



Track

Cross Country





Women's Athletics

W. A. A.



ROBERTA DUNN

Roberta won her first lettered sweater this year. She likes all kinds of sports, but tennis is her favorite.

LEONE RATCLIFFE

Leone could be truthfully called Southwestern's best girl athlete. She has won two sweaters and a blanket. Basketball is Leone's favorite game.

GLADYS JARVIS

Gladys is another excellent athlete. She certainly excels as a basketball player. Gladys's favorite sports are hockey and basketball.

ANNA MAY HANEY

Anna May has proved her athletic ability by making the team in every sport she entered this year, and she entered them all. Anna May is now serving as president of the W. A. A. girls.

Girls Basketball Team



Top Row: (left to right) Marjorie Haws, Leila Taylor, Oma McInturff, Anna May Haney, Fannie McQuaide.

Bottom Row: (left to right) Marthella Killough, Effie Dunn, Mary Jarvis, Leona Mitchell.

MEMBERS OF THE TEAM

FORWARDS

Marjorie Haws
Effie Dunn, Captain
Ruth Freeman
Ila Freeman

CENTERS

Leila Taylor
Fannie McQuaide

GUARDS

Anna May Haney
Oma McInturff
Mary Jarvis

SECOND CENTERS

Marthella Killough
Leona Mitchell

COACH, Rankin Williams

High School Tournament Winners



Tournament Winners



Wise and Otherwise

Calendar 1928-1929

SEPTEMBER

- MONDAY, 17—First bell rings. Ever'thing "green" as usual.
- TUESDAY, 18—We are now having a mental uproar.
- WEDNESDAY, 19—Lots of "Chapel" tickets sold.
- THURSDAY, 20—A freshman boy found his class today.
- FRIDAY, 21—New students rush for train—you know the rest.
- SATURDAY, 22—The sun is brightly beaming down upon our Alma Mater.
- SUNDAY, 23—Day of rest.
- MONDAY, 24—Clubs are busy organizing.
- TUESDAY, 25—First "Southwestern" off press.
- WEDNESDAY, 26—All ministers of the town appear at Chapel.
- THURSDAY, 27—First football game of season. Bulldogs defeat Cameron Aggies—19-0.
- FRIDAY, 28—"Toot! Toot!" home to MA!
- SATURDAY, 29—Bulldogs defeat West Texas Teachers at Canyon.
- SUNDAY, 30—Let's go to church.

OCTOBER

- MONDAY, 1—Our new library is making a good showing.
 TUESDAY, 2—Student Mixer to-nite. Everybody KUM!
 WEDNESDAY, 3—Main street was scene of spanking battle—Freshmen are very stubborn.
 THURSDAY, 4—"Ditto".
 FRIDAY, 5—Rubbing alcohol seems to be very popular among freshmen.
 SATURDAY, 6—Eleven o'clock date rules are being broken.
- SUNDAY, 7—Church today.
 MONDAY, 8—First lyceum of season to-nite—Lauferty-Wolfe.
 TUESDAY, 9—Hot today—94 degrees "F".
 WEDNESDAY, 10—Spirit of Southwestern brought into Assembly by "Senators".
 THURSDAY, 11—Bulldogs to Ada—FIGHT! team FIGHT!
 FRIDAY, 12—Members of faculty to Oklahoma City—to help revise curriculum.
 SATURDAY, 13—B. S. U. Conference at Norman.
- SUNDAY, 14—Everyone should be at church.
 MONDAY, 15—"Fine Arts" Concert to-nite directed by Miss Kelly.
 TUESDAY, 16—Southwestern is giving luncheon for Federation of Clubs.
 WEDNESDAY, 17—Lee Ratcliffe is chosen president of the student assembly.
 THURSDAY, 18—Dr. William C. Bagley is on the Campus today.
 FRIDAY, 19—Make up period for class cuts at sixth hour.
 SATURDAY, 20—End of National Picture Week.
- SUNDAY, 21—Church time again.
 MONDAY, 22—Miss Gee returned to school after illness.
 TUESDAY, 23—Sadie Bates elected football queen.
 WEDNESDAY, 24—Mrs. J. R. Dale of State Library Commission speaks at assembly.
 THURSDAY, 25—Southwestern band is making great progress.
 FRIDAY, 26—District Meet is coming soon.
 SATURDAY, 27—O. C. U. vs. Bulldogs—7-7. Our favor.
- SUNDAY, 28—Preaching at eleven.
 MONDAY, 29—Royal Hungarian Orchestra to-nite in lyceum.
 TUESDAY, 30—Student Directory ready for distribution.
 WEDNESDAY, 31—Special issue of "Southwestern".

NOVEMBER

THURSDAY, 1—Miss Crabtree selects "Merchant of Venice" for Q. P. play.

SUNDAY, 11—Recuperating from final exams. Sorry for cribbing; never will again.

MONDAY, 12—Thirty more victims of Education Bug arrive.

TUESDAY, 13—Gas! Gas! Weatherford has gas, through pipes of course.

WEDNESDAY, 14—Juniors adopt a new "class papa". J. R. Pratt has decided to father the brood.

THURSDAY, 15—Hammajian club went radioing with pledges entertaining.

FRIDAY, 16—Rain!!! Rain!!! And Oracle Staff must meet to-nite.

SUNDAY, 18—Catherine is slightly damaged in a car accident.

MONDAY, 19—Forensia have a party to-nite.

TUESDAY, 20—Q. P.'s are planning for a regular meeting tonight.

WEDNESDAY, 21—Grand Gobblers will strut to a meeting tonight.

THURSDAY, 22—The male sex is becoming greater in number around S. W. T. C.

FRIDAY, 23—Bulldogs and Rangers tangle this P. M.—Yea! Team!

SATURDAY, 24—W. A. A. is strongly supporting "Oracle".

WEDNESDAY, 28—Homeward bound for Turkey Day.

THURSDAY, 29—Oh, boy! Turkey and then more turkey.

FRIDAY, 30—Oracle staff, sponsored by Miss Gee, is hard at work despite vacation.

DECEMBER

MONDAY, 3—Southwestern will have a girl's "dorm"! Funds have been approved.

TUESDAY, 4—See—Penitent Pirates Operetta.

WEDNESDAY, 5—Students decide Clinton Parr will make a good assembly boss, thus they have elected him president of student assembly.

THURSDAY, 6—"Bo" Beleher is now proprietor of the Green Frog and guarantees to serve "hot dogs" hot.

FRIDAY, 7—Football boys back in school, happy after the banquet served by the Hammacian Club last night.

MONDAY, 10—"The Sale is On"! Buy Japanese articles from the Y. W. C. A. girls.

TUESDAY, 11—State Senators and Representatives are given luncheon by Southwestern.

WEDNESDAY, 12—Walter Harrison, manager of Oklahoma Publishing Company, talks to students in assembly.

THURSDAY, 13—Hammacian, Q. P. and Y. W. C. A. finish panels.

FRIDAY, 14—President Brown and G. B. Mothersead are on duty after "flu".

SATURDAY, 15—Cagemen display skill on hard wood floor practice.

SUNDAY, 16—Music Vespers reveal the Christmas story.

MONDAY, 17—Old Bulldog standbys return. Shockley and Simmons are back from Rhode Island.

TUESDAY, 18—"Cold Wave".

WEDNESDAY, 19—Still cold.

THURSDAY, 20—Miss Stewart, entertains the Probieren Club with a party to-night.

FRIDAY, 21—Rollin Pease, former instructor in Southwestern, gives recital to-night. Let's go.

SATURDAY, 22—Christmas shopping the order of the day.

SUNDAY, 23—Story of the "Shepherds' Watch" is told far and wide.

MONDAY, 24—Santa! Santa!! Claws! Clause?! Claus!

TUESDAY, 25—All is well out to "Old Aunt Mary's!"

WEDNESDAY, 26—"Call the doctor, PLEASE!"

THURSDAY, 27—"Gee, I feel tough!"

FRIDAY, 28—Spring day in winter.

MONDAY, 31—Still vacating.

JANUARY

TUESDAY, 1—Father Time strikes off another mile stone.
 WEDNESDAY, 2—President Brown lectures to the student body.
 THURSDAY, 3—Parr and Ratcliffe delegated to Student President Assembly
 at Columbia, Missouri.
 FRIDAY, 4—"Flu" is raging—bring on the "Vicks".

MONDAY, 7—"Frog" Wright got married today. So did Edna Earl Hutson.
 TUESDAY, 8—Report from Bulldog basketeers—first defeat out of seven
 games—Daniel Baker, 24-29.
 WEDNESDAY, 9—Palette and Brush entertained in chapel. Football sweaters
 are awarded.
 THURSDAY, 10—Southwesterners are enjoying a bit of old "Sol".
 FRIDAY, 11—Bulldogs will play Canyon to-nite—at Canyon.
 SATURDAY, 12—Oracle sends another order to the engravers.

SUNDAY, 13—Sunday school and church.
 MONDAY, 14—Bulldogs are in school again after Texas trip.
 TUESDAY, 15—Poor "Lefty" has the "flu".
 WEDNESDAY, 16—Seniors manifest originality in "Drama".
 THURSDAY, 17—Oh! Gee! Must prepare for exams.
 FRIDAY, 18—Grapplers are off to Norman.

MONDAY, 21—New term begins today and Freshmen will have another
 chance at Grammar 2. Phillipino Collegians entertain to-nite.
 TUESDAY, 22—Miss Shoemaker leaves for Columbia, Missouri, to work on
 her doctor's degree.
 WEDNESDAY, 23—Senators entertain in Assembly.
 THURSDAY, 24—"Cold wave".
 SATURDAY, 25—Work! Work!

MONDAY, 27—Arriere Pensee."
 TUESDAY, 28—"Ditto".
 WEDNESDAY, 29—Popularity contest begins.
 THURSDAY, 31—Bulldogs and Goldbugs grapple tonight.

FEBRUARY

FRIDAY, 1—Debate tryout this afternoon.

MONDAY, 4—Bulldogs and “pups” go to Enid.

TUESDAY, 5—The snowflakes flutter low.

WEDNESDAY, 6—“Correct” and “Incorrect” by Hammacian Club.

THURSDAY, 7—School dismissed for teachers’ meet.

MONDAY, 11—Bulldogs go to Ada.

TUESDAY, 12—Frances Avritt has been very busy to-day collecting “Snap shots” for the Oracle.

WEDNESDAY, 13—You should have seen Bill, Clyde, Virginia, and Velma perform in “You Know, I Know, Shake!”

THURSDAY, 14—Bulldogs meet Rangers to-nite at Alva.

FRIDAY, 15—Miss Gee is trying to assemble a bouquet here in February.

MONDAY, 18—Mrs. Fred Hancock lectures on China.

TUESDAY, 19—Wrestling tournament is now over.

WEDNESDAY, 20—W. A. A. girls entertain in assembly.

THURSDAY, 21—Basketball tournament begins today.

FRIDAY, 22—Bulldog grapplers vs. Broncos—here—to-nite.

MONDAY, 25—Reverend Bruce Corbin gives illustrated lecture on India.

TUESDAY, 26—Eromathian party at Winnie’s house to-nite.

WEDNESDAY, 27—“You Know? I Know. Shake” to Watonga to-nite.

THURSDAY, 28—Bulldogs, 35—Goldbugs, 33—last night.



MARCH

FRIDAY, 1—In with a gentle breeze.

MONDAY, 4—Southwestern seems to be prospering by leaps and bounds under Hoover's administration.

TUESDAY, 5—We are getting a "dirty" deal from the Northwest.

WEDNESDAY, 6—A real "Freshie" program at assembly.

THURSDAY, 7—Did we beat the "Haymakers" last night? Yea! Yea!

FRIDAY, 8—Grapplers to Edmond.

MONDAY, 11—Haskell Pruitt is here.

TUESDAY, 12—First spring shower.

WEDNESDAY, 13—Dona Forensia and Earl Southwestern—for better or for worse.

THURSDAY, 14—Gowdy-Cooper 1930 Captains.

FRIDAY, 15—Holt selected as second captain of conference teams.

MONDAY, 18—Miss Kelly has art exhibit.

TUESDAY, 19—"Merchant of Venice".

WEDNESDAY, 20—Southwestern debaters win over Southwestern College, Winfield, Kansas.

THURSDAY, 21—Oracle work is most finished.

FRIDAY, 22—"Exams!", "Exams!"

MONDAY, 26—"Begin again"—last term opens.

TUESDAY, 27—Class work is now resumed.

WEDNESDAY, 28—B. S. U. entertains today.

THURSDAY, 29—Bulldog track team on tour through Texas.

FRIDAY, 30—Band to Arapaho.

APRIL

MONDAY, 1—"April Fool!"

TUESDAY, 2—Report has come that Miss Crabtree will not be back to Southwestern.

WEDNESDAY, 3—Let's go to assembly, Tri-J's will entertain.

THURSDAY, 4—Band contemplates a tour.

FRIDAY, 5—Mrs. Froman hopes to have the new library soon.

SATURDAY, 6—We play tennis and go horseback riding.

SUNDAY, 7—Every one goes to church.

MONDAY, 8—Senior party given by Neff and Stewart.

TUESDAY, 9—Y. W. C. A. meet.

WEDNESDAY, 10—"Wise Fools" entertain.

THURSDAY, 11—Hammacians have Ellen H. Richards program.

FRIDAY, 12—"Mamma, come get your boy."

SATURDAY, 13—Review all day and preview all night.

SUNDAY, 14—Too much Scotch!

MONDAY, 15—Reverend Corbin talks on India.

TUESDAY, 16—Q. P. lay out paint and togs to play at Thomas.

WEDNESDAY, 17—S club assembly.

THURSDAY, 18—Forensia banquet tonight.

FRIDAY, 19—S. W. I. M.! SWIM!

SATURDAY, 20—S. W. I. M. continued.

SUNDAY, 21—"Got change for a dime?" "Sure, hope you enjoy the sermon."

MONDAY, 22—Senators of the affirmative prove love is fickle.

TUESDAY, 23—Astronomers work in their laboratory.

WEDNESDAY, 24—Juniors stage assembly program.

THURSDAY, 25—Milton Keen represents Southwestern in oratorical contest at Oklahoma City.

FRIDAY, 26—Crisp men debate tonight.

SATURDAY, 27—P. B. C. enjoy week-end sketching in the Wichita mountains.

SUNDAY, 28—Go in. The tickets are on me.

MONDAY, 29—Get out your bathing suit.

TUESDAY, 30—Robin Hood proposes.



MAY

WEDNESDAY, 1—Queen Irma rules supreme.
 THURSDAY, 2—We saw the Oklahoma artists' exhibit.
 FRIDAY, 3—Q. P. reader goes to Ada.
 SATURDAY, 4—Two horses, pound of wieners, box of marsh-mallows, pero caliente!

SUNDAY, 5—Heard the preacher sing about "Holy Cross-eyed Bear."
 MONDAY, 6—Copelin studies a crustacean.
 TUESDAY, 7—Track team pants in its last lap.
 WEDNESDAY, 8—Mr. DeJarnette sings in chaapel.
 THURSDAY, 9—New moon. Plenty of shine.
 FRIDAY, 10—Fish.
 SATURDAY, 11—Baseball men are playing well.

SUNDAY, 12—Precipitation below normal and temperature above.
 MONDAY, 13—Annual art exhibit opens.
 TUESDAY, 14—Copyfication classes hear from mid-terms.
 WEDNESDAY, 15—Last assembly program.
 THURSDAY, 16—Band root and toot, others cram.
 FRIDAY, 17—We didn't have a big dance in the gym.
 SATURDAY, 18—It won't be long now.

SUNDAY, 19—Baccalaureate Exercises for 1929.
 MONDAY, 20—Privileged seniors wear their caps and gowns.
 TUESDAY, 21—Moonlight and Roses. Ain't love grand?
 WEDNESDAY, 22—Commencement Exercises.
 THURSDAY, 23—Oh, you finals.
 FRIDAY, 24—Seniors burn their notebooks.



SERVICE
SAVINGS
SATISFACTION

We insist that every package
wrapped here must contain all three.

Copyright 1929 Hart Schaffner & Marx

HART SCHAFFNER & MARX CLOTHES
DOBBS HATS
CAMPUS CAPS
MANHATTON SHIRTS
MUNSINGWEAR
BOSTONIAN SHOES

CECELE DANCE FROCKS
PATRICIA MILLINERY
BELDING'S SILKS
MUNSING & EIFFEL HOSE
MUNSINGWEAR LINGERIE
NELLY DON FROCKS

THE
PEOPLES STORE
WEATHERFORD, OKLAHOMA.

one hundred forty-five



THE Liberty National Bank

WEATHERFORD, OKLAHOMA

Capital, Surplus and Profits

\$70,000.00

George Larkin in Public Speaking: When a child, Al Smith attended a paragogical school.

—Daff. O. Dill—

THE IMPERIAL CAFE

BEST COFFEE

BEST SERVICE

BEST EATS

Day and Night Service

MRS. N. MORTON, PROP.

Weatherford

Oklahoma

HARPER & GOODRICH GROCERIES

Phone 44

Free Delivery

one hundred forty-six



**WE ARE GLAD TO BE CLASSED AS A FRIEND
TO "SOUTHWESTERN"**

BECAUSE:

1. We believe in the policies of Administration.
2. We love its traditions.
3. We cherish the memories of its former students and enjoy the association of the present ones.
4. We have confidence in those in charge.
5. We are in sympathy with the work it is doing.
6. We take pride in its achievements.

**SOUTHWESTERN OFFICE
SUPPLY COMPANY**

110 North Broadway

WEATHERFORD, OKLAHOMA

Phone 63

Dealers in Office Supplies, School Supplies and Notions

ROY EVERETT POULTRY & EGG CO.

"I BUY AS IS"

WEATHERFORD

OKLAHOMA

City Phone 294

Rural Phone 72

one hundred forty-seven



MAGNOLIA GASOLINE

INSURES MAXIMUM MILEAGE
MAGNOLINE, THE DEPENDENT LUBRICANT
A GRADE FOR EVERY CAR

City Phone 289

Rural Phone 8

PATTERSON AND WRIGHT, AGENTS

WHY WE FLUNK

(Five illustrated reasons)

1. A pollygon is a dead parrot.
 2. "Magna Carta" was a big wagon used by ancient people.
 3. "Watered stock" is cattle that have had a drink.
 4. "Who was Leonardo da Vinci?"
"Mrs. da Vinci's boy."
 5. ZZZZZ ZZZZZZ ZZZZZZ ZZZZZZ ZZZZZZZ.
-

WEATHERFORD BUILDING AND LOAN ASSOCIATION

WEATHERFORD, OKLAHOMA

AUTHORIZED CAPITAL
\$2,000,000.00

THE DAVIDSON-CASE LUMBER COMPANY

Quality First

WEATHERFORD

OKLAHOMA

one hundred forty-eight



GEIGER'S CLEANING WORKS

CLEANING

Modern

PRESSING

REPAIRING

Progressive

HAT BLOCKING

STANDARD LUMBER COMPANY

"Home Builders"

SPECIAL SERVICE TO CUSTOMERS
IN SELECTING PLANS FOR A HOME

Pure Domestic Lump, McAlester and Colorado Coal

HOMER C. BREEDING, Local Mgr.

City 150

Phone

Weatherford, Oklahoma

Rural 57

one hundred forty-nine



SAM RAMDLE

FEEDS AND PRODUCE

Phone 242

WEATHERFORD, OKLAHOMA

WHEELER GRAIN COMPANY

For Coal
Best McAlester Grades
Prompt Delivery

Phone
City Phone 270 Rural Phone 75

Prof. Pratt: What do you suppose I taught when I took practice teaching? (No answer from the class) I taught domestic science. Then what do you think they switched me to?

Class (in unison): Dressmaking.

—Al G. Bray—

We noticed in the Southwestern last week that "Julia Beach gave an interesting talk on the Y. W. C. A. building in Topeka, Kansas, where she spent one night during her vacation." We wonder what these girls will be doing next.

—Jack and Jill—

Waiter: What will you have, sir?

Policeman: Couple of yeggs.

—Ches Nut—

McADOO'S SHOE SHOP

EXPERT WORKMANSHIP

BAGS, BILLFOLDS

HANDSOME BELTS
HIGH SPIKE HEELS PUT ON

ALL WORK GUARANTEED

one hundred fifty



WEATHERFORD MOTOR COMPANY

LARGEST DEPARTMENTIZED GARAGE
AND SALES SERVICE THIS SIDE OF
OKLAHOMA CITY

COMPLETE LINE OF PARTS FOR
WHIPPETS & WILLYS KNIGHTS.

OPEN DAY & NIGHT

*ALL KINDS OF ROAD SERVICE
ANYTHING TO PLEASE THE CUSTOMER
IS WHAT WE WANT TO DO*

City Phone 123

Prop. J. M. Roush

Rural Phone 99

IF—

You want Notebook Paper, Ink
Or anything else for school you will find it at the

COLLEGE BOOK SHOP

Lee Ratcliffe, Proprietor.

WE
BUY
SELL
LIST

BOOKS

one hundred fifty-one



EATON DRUG CO.

"Staunch Guardians of Health"

CERTAIN drugs lose strength with time.

We would no more use impotent drugs in a prescription than you would read a year old newspaper, or eat a spoiled egg.

First, last, and all the time we have established a reputation as good druggists. And, believe me, we expect to live up to it.

ASK ANYBODY

FIRST STATE BANK

WEATHERFORD, OKLAHOMA

Solid as a Rock

Teachers and Students Always Welcome

F. D. LUCAS, President.
L. A. WHITE, Vice-Pres.

A. L. KOBS, Cashier.
M. DUNLOP, Ass't. Cashier.

one hundred fifty-two



WE CLEAN ANYTHING

COLLEGE CLEANERS

A Modern Plant

Call For and Deliver

Phone 140

Glenn Stambaugh: They say a college student should have eight hours of sleep every day.

George Keith: Yes, but you can't enroll in more than five classes.

—Real S. Tate—

Backward! turn backward! oh, time in thy flight!

Give us a rest again just for tonight.

Somnus, come back from that echoless shore.

Give us a rest, Somnus, give us a snore.

—Oracle Staff—

EVERTS PHARMACY

"Weatherford's Most Modern Drug Store"

ROY C. EVERTS—JEWELER

J. D. SMITH—DRUGGIST

Phone 57
Weatherford, Oklahoma

We appreciate your patronage and try to merit your continued good will by giving you Better Merchandise—Better Service and More for Your Money—every day in the Year.

C. R. ANTHONY CO.

one hundred fifty-three



THE DIXIE

Weatherford's Economy Store

WEATHERFORD

OKLAHOMA

CENTRAL SERVICE STATION

COMPLETE SERVICE FOR THE CAR
FIRESTONE TIRES & TUBES

Good Gasoline

Good Oils

When Lee Ratcliffe and Clinton Parr made their trip to the University of Missouri, they bought second class tickets, but thro' mistake got into the first class car.

When the Pullman conductor came through he stopped and asked, "Are you first class?"

"Sure," they responded, "We're all right."

—Ida Phoebe—

"In what did you enroll?"

"Pathology and astronomy."

"Night classes?"

"Yeh."

—Romeo De Sheik—

Ethel: Let's go to the library.

Irene: No, I gotta study.

—Willie de Kay—

DEAN'S

BARBER SHOP

BEAUTY PARLOR

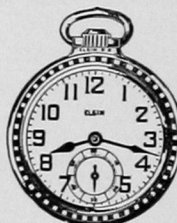
Phone 212

For that neat appearance

one hundred fifty-four

Phone

260



"Diamonds"

**JONES
JEWELRY STORE**



SANITARY MEAT MARKET

Just a Step Ahead in Quality
FRESH AND CURED MEATS

Highest Prices Paid for Cattle and Hogs

FRANK FRITZ, Proprietor

Weatherford

Oklahoma

Argyle: What are you going to whip me for?

Dr. McLauchlin: You will get your credit slip tomorrow and I have to go to Oklahoma City tonight.

—Uneeda Brain—

I opened the window and influenza.

—Iva Cold—

Seven days in "math" makes one weak.

—Al G. Bray—

FRESHMAN LOGIC

Major premise—Nothing is better than a good lesson.

Minor premise—A poor lesson is better than nothing.

Conclusion—Therefore, a poor lesson is better than a good one.

—The Phillipian—

Our Service is Service

With a Smile

MAY BARBER SHOP

FRIGIDAIRE SALES and SERVICE

FRIGIDAIRE operates quietly, automatically, without attention. It is remarkably low in price, and surprisingly economical in the use of current. It has the famous FRIGIDAIRE COLD CONTROL . . . the exclusive new Frigidaire development which Frigidaire alone gives to you. Quiet, economical and proven performance have helped to make the new FRIGIDAIRE the choice of the Majority. There is a FRIGIDAIRE for every need.

FRIGIDAIRE

(Product of General Motors)

E. E. WILSON

WEATHERFORD, OKLAHOMA

one hundred fifty-five



THE BUNGALOW THEATRE

The Show Place of Weatherford

EMERSON'S RACKET STORE

sells it for less—why pay more?

Weatherford

Oklahoma

ELEEMOSYNARY ARGUMENTATION

Spasm 1: "Whose speech shall I rebuttal?"

Spasm 2: "When a person is 18 years old, he doesn't need any more environment. He's had enough already."

The convulsion: "Where do you find the people interested in religion? You don't find them in the colleges. You don't find them in the universities. Where, then do you find them? I answer, in the cemeteries."

—Watta De Bate—

Motor Cop: Did you see the accident, sir? What was the number of the car?

Prof. Pratt: I'm afraid I've forgotten, but I remember noticing if it were multiplied by fifty, the cube root of the product would be equal to the difference of the squares of the digits reversed.

—Al G. Bray—

G. K. HARRIS & SON HARDWARE

sporting goods, cutlery, builder's hardware
house furnishings, etc.

THE WINCHESTER STORE

one hundred fifty-six



Power Car Washing

Power Car Greasing

DENNEY-WOODS CHEVROLET CO.

Incorporated

WEATHERFORD

OKLAHOMA

AFTER THE BATTLE, MOTHER

Ellis: What are the freshman colors?

Harold: Some say blue and white, others say black and blue. It all depends on how you look at us.

—Up R. Classman—

What is a fellow going to do when he gets tired of standing up and can't sit down?

—A Frosh—

Oakland-Pontiac

Sales and Service

BURKS-BRINTLE MOTOR CO.

Phone 383

123 N. Bdwy.

WEATHERFORD, OKLAHOMA

MRS. J. G. REES

HOME OF POPULAR PRICED MERCHANDISE

PHONE 346

WEATHERFORD, OKLAHOMA

one hundred fifty-seven



Dr. T. S. Smith
DENTIST

City Phone 238
Rural 47

N. E. Ruhl, M. D.

Eyes Tested—Glasses Fitted

Phone 95
Weatherford, Oklahoma

Riley Burns: Miss Gee told us to draw the diaphragm of all these sentences.
—Polly Anna—

Freshman girls: "Well, you can make fun of the freshmen all you want to, but I think they are the peppiest bunch in college."

Upper Classman: "I agree with you. The freshmen are the bread and meat of the rest of the college—and especially the meat."
—Willie Soohn de Kay—

There once was a fat senior named Peever
Who in rather late hours was a believer;
While "they" sat in the porch swing,
From a clear sky there came rain,
And Peever at once was a leaver.

For details ask Bill himself concerning his experiences after the mixer.
—Ab Breviation.—

R. N. LINVILLE
LAWYER

HOWE BUILDING

N. CUSTER

D. Clyde Gordon, D. D. S.

Weatherford, Oklahoma

City, Phone 1

Rural 1

Dr. J. W. Coulson

Chiropractor

Phones—City Res. 340-W
Off. 301

Rur. Res. 65
Off. 94

RADIONIC EQUIPMENT

Save with
Safety at
Your
REXALL
Store

CORNER PHARMACY

Drug Phone 34

We Deliver Free
And Freely

F. H.
Hudleson
Prescription
Druggist

WHEN YOU ARE HUNGARY

THINK—

THACKER BROTHERS Grocery and Market

"Home of Purity Bread"

A New Firm

WEATHERFORD INSURANCE AGENCY

WANDA WHITSON

Owned and managed by a Southwestern Graduate

INSURANCE—LOANS—REAL ESTATE

Public Stenographer and Notary Public in Office

Weatherford,
Oklahoma

City Phone 370
Rural Phone 40

one hundred fifty-nine



**LUTTRELL'S
BARBER & BEAUTY SHOP**
Where Quality Counts

111 East Main

Phone 77

HIGHWAY SERVICE STATION

Cities Service Oils

U. S. Tires

203 E. Main

O. C. Norman

Miss Yeoman (in hygiene class): Some children breathe with their mouth open. Teachers should look into this.

—L. E. Vator—

Mr. Neff's definition: "Obesity is food gone to waist."

—U. Genies—

Ben: Oh, hum! I sure hate to leave Miss Smith's class.

Her: Hate to leave Miss Smith's class! Why is that?

Ben: I'm still sleepy.

—Ches Nut—

CITIES SERVICE STATION

GASOLINE

OILS

ACCESSORIES

First Presbyterian Church

STUDENTS WELCOME

WASHITA-STATE

C. FRED HANCOCK, Minister

Hamburger Special

Short Orders and Cold Drinks

J. M. Whitworth

122 S. Bdwy.

"Let the Laundry Do It"

WEATHERFORD STEAM LAUNDRY

Here for Your Convenience

Phone 366

Voice over telephone: Who is this?

Other voice: This is the Green Frog.

—Dan D. Lion—

IN THE SOUTHWESTERN

As the Oracle Staff has not yet procured its frigidaire, it requests that no check that registers over 90 degrees in the shade be presented.

—Ye Editor—

First student: Do you know why Santa Claus wears red trousers?

Second student: Sure, to match the rest of his suit.

—I. D. Clare—

PALMER-POTTER HARDWARE COMPANY

Furniture

Floor Coverings

Sporting Goods

EVERYTHING FOR THE FARM AND HOME

Monuments
Old Reliable

CHEYENNE MARBLE WORKS

Our Motto: Quality and Workmanship

GORDON and WALDRIP, Proprietors

WEATHERFORD

OKLAHOMA

one hundred sixty-one



ORACLE

Photographs

Tell the Story

McGowen Studio

Photography in all its Branches

Weatherford, Oklahoma

Upstairs over First State Bank

Phone 89

one hundred sixty-two



ORACLE

Autographs





The Demand
for
High Quality



The Great PRINTING and STATIONERY House
of OKLAHOMA
WE OCCUPY OUR OWN FOUR-STORY BUILDING
WITH FLOOR SPACE OF 50,000 SQUARE FEET.

Workmanship, Service
or Goods is
never ending!

—We manufacture more than
half of the School Annuals in
Oklahoma!

—*Experience* qualifies us!

—Inspect our productions.

Co-Operative Publishing Co.

In The Vanguard of Progress!

School Annual Printers and Binders

GUTHRIE, OKLAHOMA

