



Southwestern Oklahoma State University
SWOSU Digital Commons

SWOSU Yearbooks

Campus Publications & Productions

1941

The Bulldog 1941

Southwestern Oklahoma State University

Follow this and additional works at: <https://dc.swosu.edu/yearbooks>

Recommended Citation

Southwestern Oklahoma State University, "The Bulldog 1941" (1941). *SWOSU Yearbooks*.
<https://dc.swosu.edu/yearbooks/30>

This Book is brought to you for free and open access by the Campus Publications & Productions at SWOSU Digital Commons. It has been accepted for inclusion in SWOSU Yearbooks by an authorized administrator of SWOSU Digital Commons. An ADA compliant document is available upon request. For more information, please contact phillip.fitzsimmons@swosu.edu.



The
BULLDOGE
1941





The 1941
BULLDOG

■
GLENN E. SHELTON
EDITOR

■
COLIN ALFORD
BUSINESS MGR.

■
LITHOGRAPHY
SEMCO COLOR PRESS
OKLAHOMA CITY, OKLA.

■
COVER
UNIVERSAL BOOKBINDERY
SAN ANTONIO, TEXAS

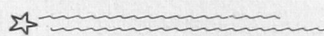
■
PHOTOGRAPHY
HOFFMAN STUDIOS
WEATHERFORD, OKLA.



1 9 4 1



TO AN ideal which permits dreams, to a flag which inspires hope, to a government which, with all its myriad imperfections, is still our own creation, to the spirit of Democracy, the American Way, we, the students of Southwestern Tech, dedicate ourselves now and forever—.



In Memoriam



INTO the day dreams of every college man, when books are on the shelf, come memories of a real friend—one whose teachings have since proved themselves true as gold, one whose counsel has proved wiser with each passing year and whose kindly, simple philosophy has become the guiding star of his every enterprise.

We of the annual staff, knowing that the day dreams of many a Southwestern alumnus have been vitalized and enriched by the presence of that teacher and scholar, Audubon H. Neff, pause here to honor him who has responded to that school bell wherein alone lies the complete wisdom.



Foreword . . .

The Southwestern Institute of Technology is a growing school. New towers of purpose as well as new houses of learning are being added to the campus every year. New theories of education, new ideas of curriculum and administration are being initiated.

Just as this is a changing school, so is this a changing and shifting world. The only things which endure are those seemingly abstract virtues which are based on the equality of every living creature and the integrity of human souls in the eyes of God. Such eternal principles form the foundation of our Democracy. It is for the perpetuation of these ideals that we selected the thread of Americanism to bind these pages.

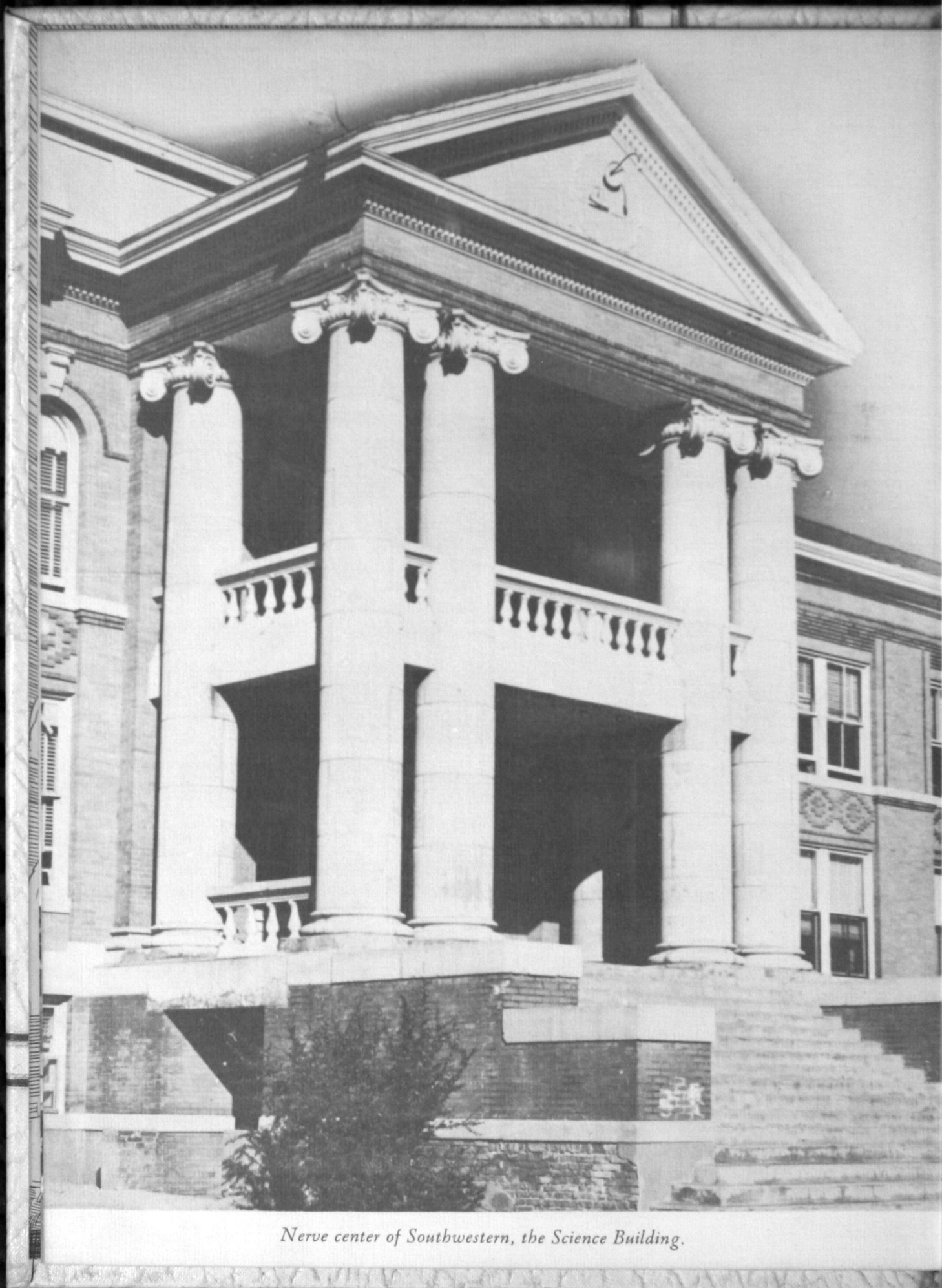
It is our hope, our earnest prayer, that in future moments of retrospect when we shall open this book, that it will be done in a peaceful world—that it will not only restore many happy memories of college life, but that it will also be a reminder that the banners of our school and of our country are still flying because they are held aloft by the indomitable spirit of a free people.

MISS
VERNELLE
CRELIA

A
N
N
U
A
L

Q
U
E
E
N





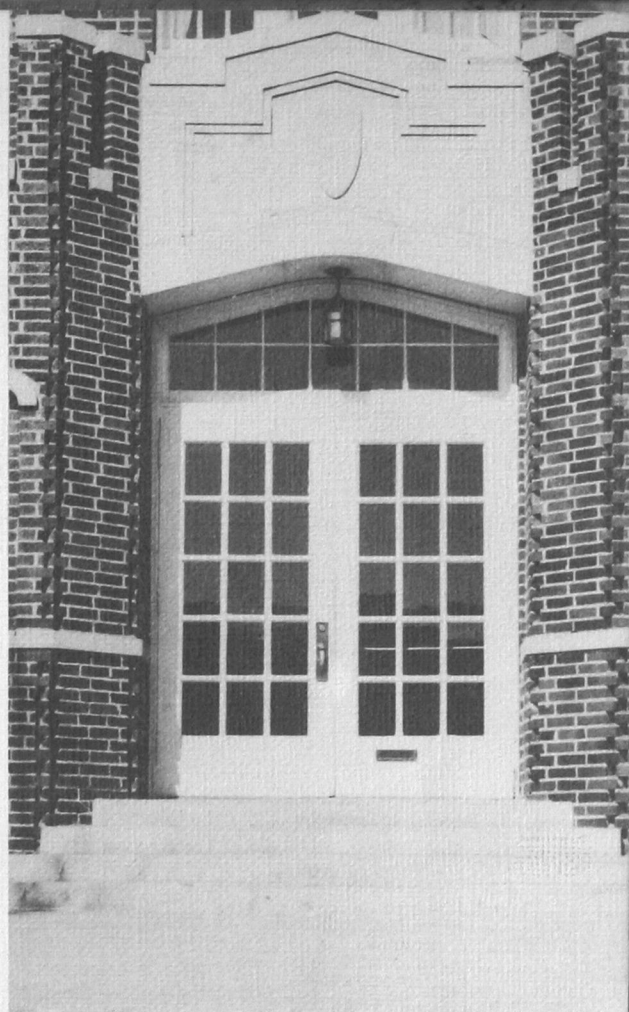
Nerve center of Southwestern, the Science Building.

YEAR after year Southwestern's education students gather at the training school to learn to do by doing. Here, in the classrooms with the lower grade children, the college student observes the methods of experienced teachers and does his practice-teaching under their close supervision.



MADE of native stone, the picturesque Vocational Building now houses many of our national defense classes. It is the newest building on the campus, having been completed only last year, and now stands in silhouette on the crest of the hilltop, an emblem of Southwestern's pledge to aid in the defense of our country.

Manicures and sawdust, trombones and airfoils.



Here we learn to teach—Training School for future profs.

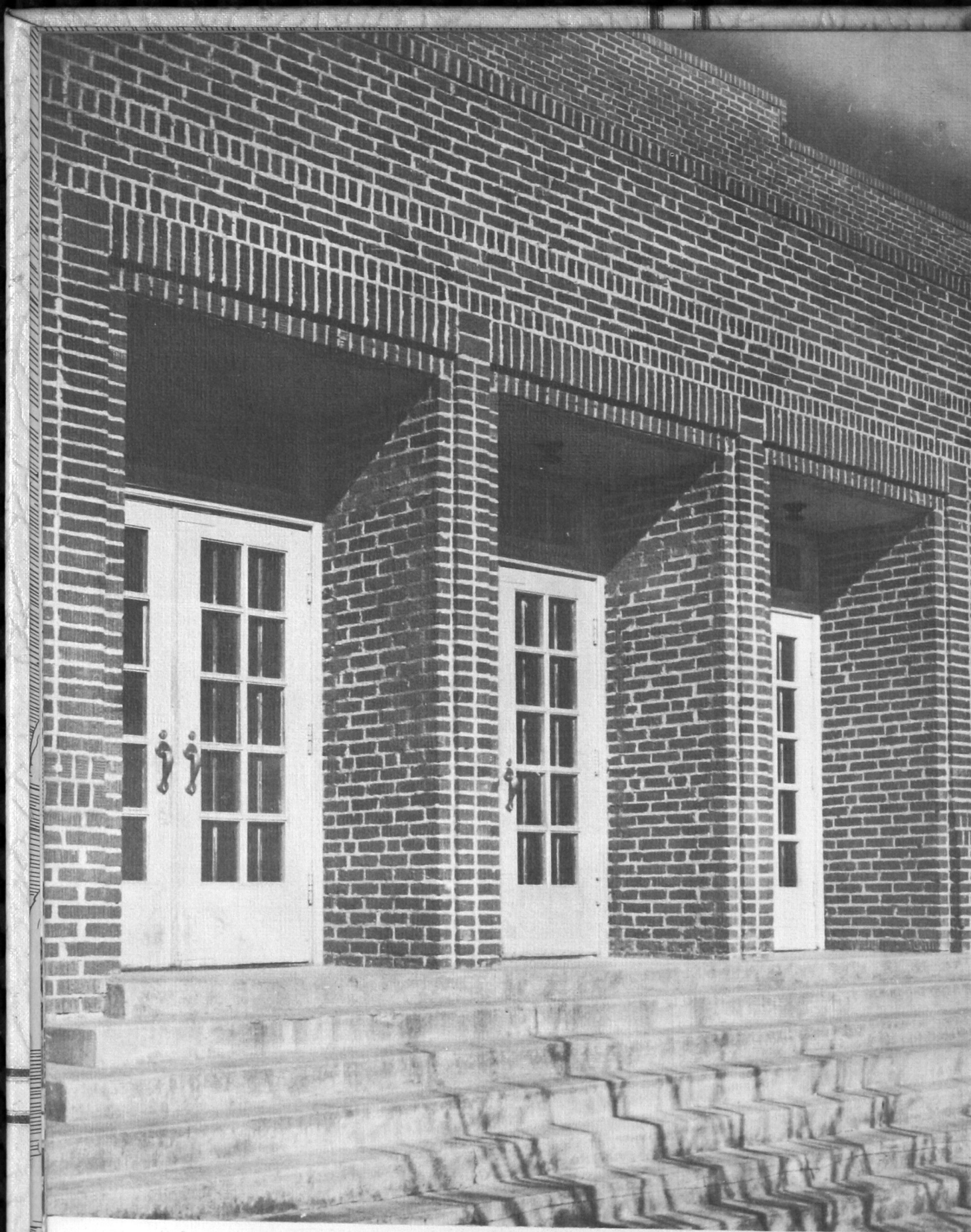




Be it ever so humble—home for two hundred eds.



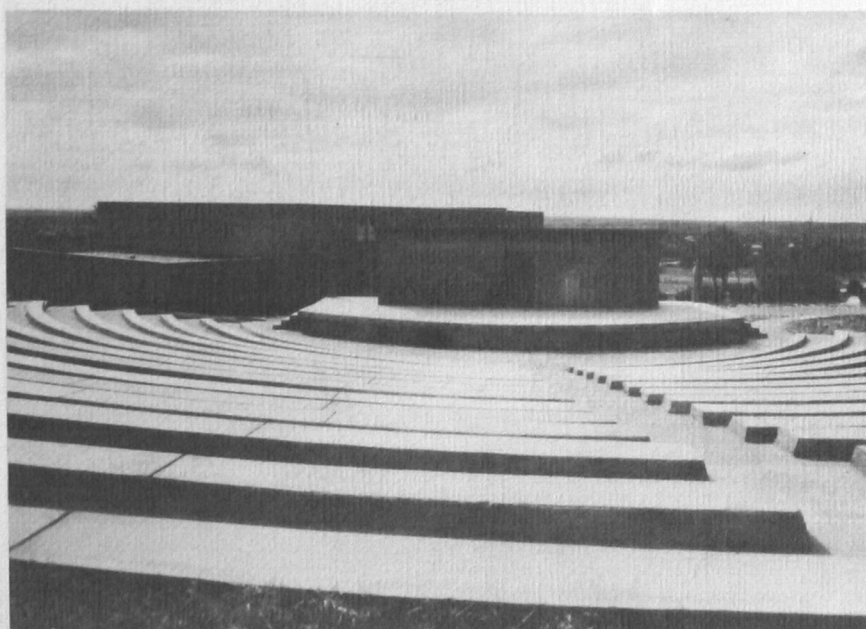
The heart of the campus, beautiful with flowers and shade trees, our girls' dormitory.



*Strong, clean bodies make alert minds—builder of muscle and sportsmanship—
—the gymnasium.*



Home of our President



Artistically designed and constructed, our Amphi-theatre affords a convenient and romantic setting for summer programs.



From Shakespeare to Shaw, Chaucer to Kipling—a bookworm's heaven.



With the realization that your year book will long be a reminder of your college days, I am happy to have it include my greetings and good wishes.

May the years of the future bring to each graduate and to each possessor of this book not only happy memories, but a harvest rich in satisfaction and profit for each hour of work and each sound thought and habit acquired at Southwestern Tech.

Leon Phillips

Governor of Oklahoma.

BOARD OF REGENTS

for

OKLAHOMA COLLEGES



FORREST McKENZIE



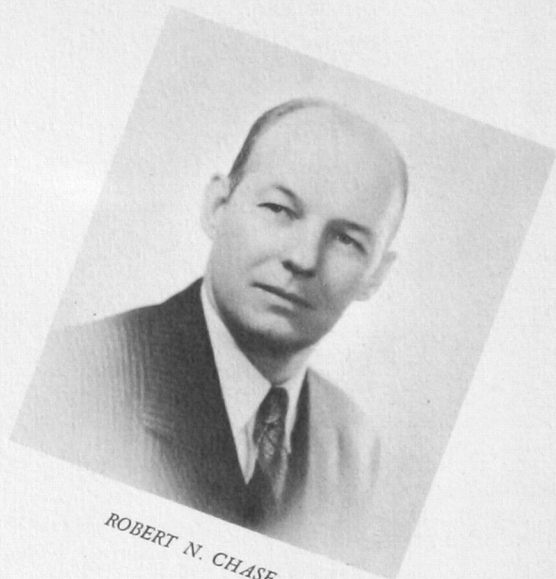
T. T. EASON



FRED HOLMAN
Chairman



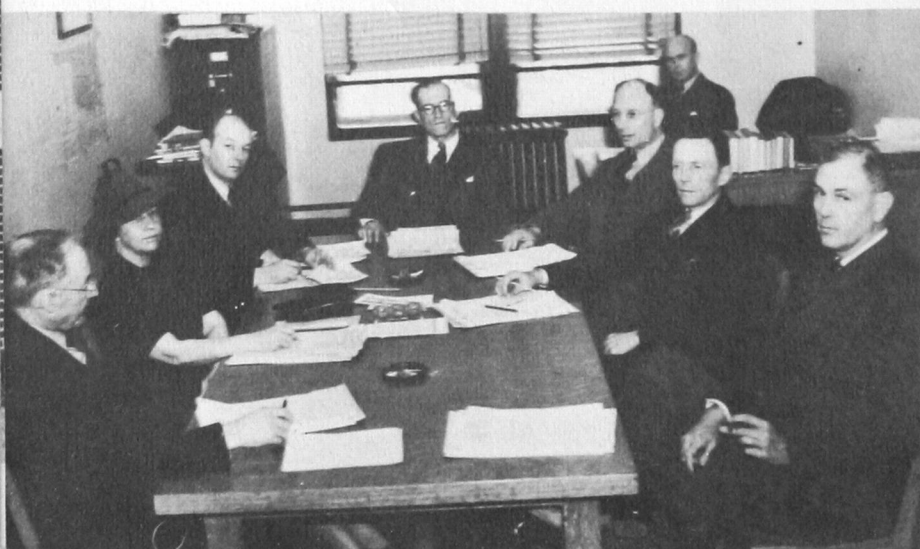
C. E. CROOKS



ROBERT N. CHASE



JEWEL ROBBINS



G. S. SANDERS

The MESSAGE of Our President

A Loyal American



ONE OF THE darkest midnights that the world has even known has drawn its curtain across the face of the earth. Empires are crumbling beneath the battering and the shock of bitterness and death. Foundations of homes are being exploded by military might. Old men in the evening time of life, young men in the bloom of manhood, and even babes held in their mothers' arms are being destroyed by the lash of warfare. The life of civilization is like that of a little child tottering down a bleak and hate-infested pathway. Everywhere there is darkness, fear, and uncertainty; everywhere there is treachery at work.

BUT HOPE finds a way in America the Great, America the Beautiful, and America the Blessed Land of Our Forefathers which is fortifying against these germs of evil—these machines of death. It is being done by building the spiritual and the moral, which in turn will govern the physical power of the mightiest nation on earth. Character, seasoned with faith, will sustain us in the testing periods that try our mettle.

HENCE, at Southwestern we are trying to build not only experts in the field of mechanical skills and academic knowledge, but citizens who can walk through the fire protected by the asbestos of good living.

LIVE A GOOD LIFE, THOROUGHLY EDUCATE, AND FEAR NO EVIL.

James B. Koren

THE DEANS

Known for his friendly smile and quiet dignity, R. C. Dragoo has been dean of the college since coming here in September, 1939. Besides his heavy administrative duties he teaches algebra and physics and is always ready to offer a friendly word of advice to students and faculty.

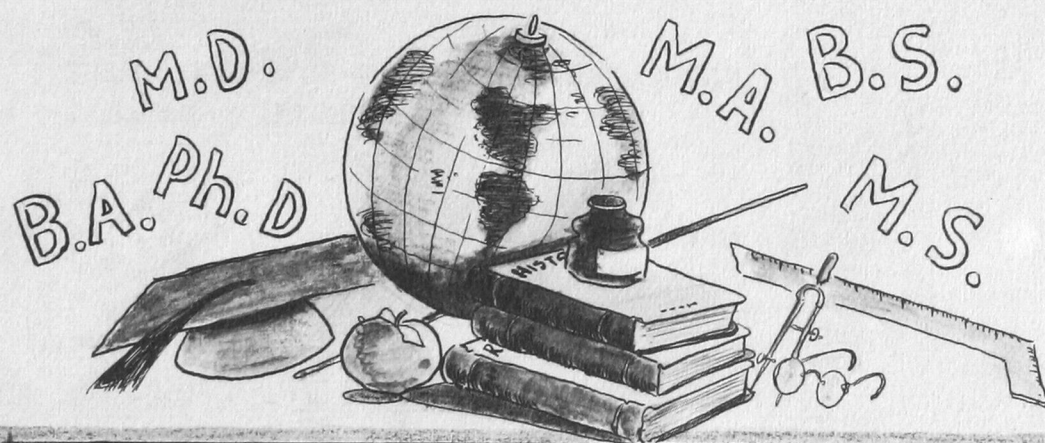


Mrs. Phoebe Addison came to Southwestern in 1925. She is very versatile, teaching hygiene, first aid, physical education and health. She has been dean of women since 1930.



Mr. G. P. Wild, dean of men, is in demand as a lecturer on international affairs. He teaches economics and is associate professor of history.





★ FACULTY ★



PHOEBE ADDISON, B. A., M. S., Dean of Women, Hygiene
MILLIE ALEXANDER, B. A., Registrar

★

RUSSELL A. BABB, B. A., M. Ed., Education
JAMES CALVIN BARNETT, B. A., M. Ed., History

★

DEWEY BEESON, B. S., M. S., Education
MARY BOYD, R. N., Health

★

CLEOPATRA CARDWELL, B. A., M. A., Education
MARJORIE CARMICHAEL, B. S., Secretary to the President

★

MRS. ELSIE McCLURE CHAPMAN, B. A., M. A., Education
ERNEST CRAIN, B. A., M. Ed., Education

★

GEORGE A. CRISWELL, A. B., Financial Secretary
JENNETT CROSBY, B. S., M. A., Education

★

WALTER H. CROUCH, A. B., Journalism
EDITH FROST DAVIS, American Conservatory,
Chicago; Music

★

RAYMOND C. DRAGOO, B. A., M. A., Dean of College,
Mathematics

DONALD EMERY, B. S., Commerce

★

CLETIS T. ESKEW, B. S., M. S., Botany; Advisor, Yearbook
CAROL D. FARMER, B. S., M. S., Commerce



MARY EDITH FORBES, B. S., Education

WILLIE FUNDERBURK, N. Y. A. Supervisor

★

MAGNOLIA GEE, B. S., M. A., Education

BOB GILCHRIST, C. A. A. Instructor

★

EDWIN S. GRANT, Character Education

A. C. GUFFY, B. L., Commerce

★

MRS. H. S. HAIR, B. S., Education

EARL HAMBURGER, B. A., Education

★

RAYMOND L. HAZLET, B. A., M. A., Education

S. B. HINK, Electrical Trades

★

MILDRED D. HOBBS, B. A., M. A., Education

DELPHINE PRATT HOBERECHT, B. A., M. A.,
Education

★

FRED W. IRION, B. S., M. Ed., Education

GRACE E. JENCKE, B. A., M. A., Ph. D., English

★

DICK JEWELL, B. S., Music

VERLE JONES, B. A., M. A., English

★

MYRLE E. KELLY, B. S., M. A., Art

L. J. KLOTZ, B. S., M. S., Ph. D., Pharmacy





J. C. M. KRUMTUM, B. A., M. A., Ed. D., Foreign Languages
CLARENCE McCORMICK, B. A., M. A., Ph. D.,
Mathematics

★

LILLIAN MILAM, B. M., B. A., Music
EDNA MULDROW, B. A., M. A., English

★

J. G. NAIMAN, B. A., M. A., Biology
W. E. PHILLIPS, Aviation and Motors

★

EVA PHIPPS, Dietician
J. R. PRATT, B. A., M. A., Mathematics

★

ALICE PROCTOR, B. A., M. A., Ph. D., Music
LELAND PROCTOR, B. M., M. M., Music

★

DANIEL RIVKIN, B. S., Pharmacy
G. D. ROBBINS, Carpentry

★

LEONA SCHNELL, B. S., M. S., Biology
CECIL SHEPPARD, Assistant to the Financial Sec'y

★

ELSIE SHOEMAKER, B. A., M. S., M. P. J., Speech and
Journalism

FANNIE SHOLARS, B. A., M. A., Education

★

J. H. SMITH, Custodian
JAKE SPANN, B. A., Football Coach and Physical
Education



DORA ANN STEWART, B. A., M. A., Ph. D., History

DORIS STANSELL, Cosmetology

★

CLARA THOMPSON, B. A., M. A., Education

MYRTLE UMPHRESS, B. S., M. S., Home Economics

★

MRS. MARION VICKERS, Hostess Neff Hall

MARION VICKERS, Assistant Football Coach

★

BERT WEISSER, Defense

ELOISE WHEELER, B. A., B. L. S., Librarian

★

MRS. L. B. WHEELER, B. S., Hostess of Stewart Hall

GEORGE P. WILD, B. S., M. A., Dean of Men, History

★

RANKIN WILLIAMS, B. A., Physical Education

CLARENCE C. WYATT, B. S., M. A., Education



THE BULLDOG STAFF

IT was long hours of labor but it was worth it! Members of the "Bulldog" staff are proud of their book, thankful for the fine cooperation of the faculty and student body, and glad to get a little sleep!



Glenn Shelton, Editor-in-Chief.



Bill Rogers, Sports Editor



Even after working into the wee hours, Nellie Rose McCool, Makeup Editor, can still smile.



Colin Alford, Business Manager



"Take a letter, Miss Holden"—Correspondent extraordinary, Dorothy Holden, Secretary.



FOLLOWING in the glory-filled wake of last year's publication, the first since 1932, this year's Bulldog staff found it had a very high standard to maintain. So setting to work early in September, the group began assembling material with its eye ever on that lofty precedent and with an earnest desire to make a substantial improvement so that every year our annual might be a better edition than that of the previous year.

So mixing equal quantities of imagination, artistry and midnight oil, the mixture before you resulted.

We only hope it meets with your full approval and that it lives up to the fine standard of its predecessor and furnishes a guiding star for next year's staff.



Doris Hays, Art Editor

THE SOUTHWESTERN

FIRST thought on a Wednesday morning—The Southwestern! A publication well balanced in features, art, news stories and editorials, our newspaper was last year selected as the state's outstanding senior college weekly. Careful planning, imagination and journalistic skill go into its makeup; enthusiasm characterizes its reception!

The Southwestern upholds the traditions and ideals of the school. It maintains the welfare and integrity of the student body and its every activity is based on the foundation of service.



Bill Dougherty, Advertising



*Rubydell Randolph, Harlan Parky and
Tommie McCarrick, Circulation*



Jim Burnham, Engraver



Charles Blanton, Engraver



Eloise Morris, Society

"Whit"

Lloyd Whitfield, editor of The Southwestern, combines a rare talent for management and writing with a broad sense of humor and a keen sense of news values.

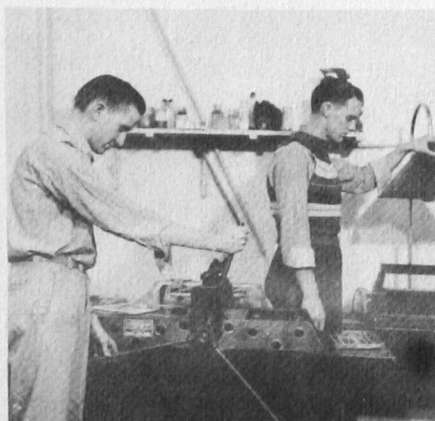
A writer of forceful, dignified editorials, clear, concise news stories and breezy features, "Whit" is well qualified for his responsible position.



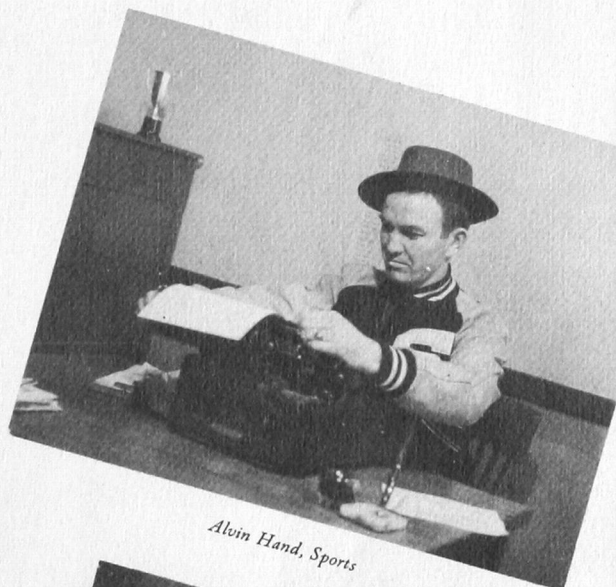
Lloyd Whitfield, Editor



Joy Shockley interviews a student



Newton Reavis and Floyd Birden, Engraving



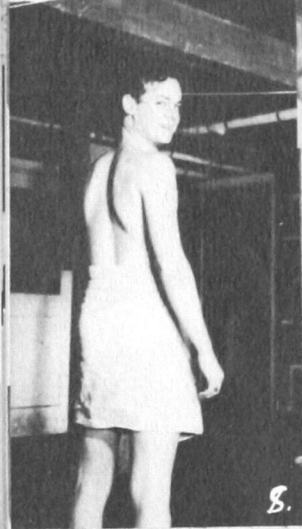
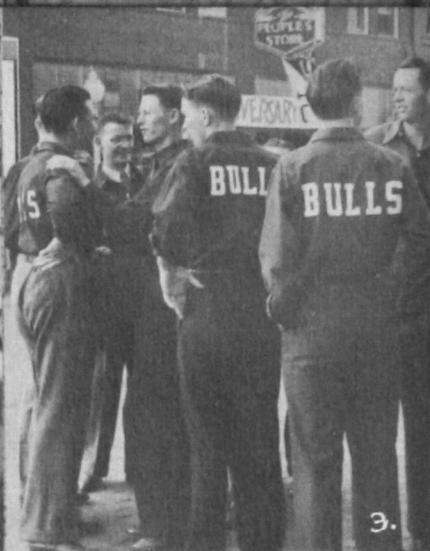
Alvin Hand, Sports



Glenn Shelton, Cartoonist

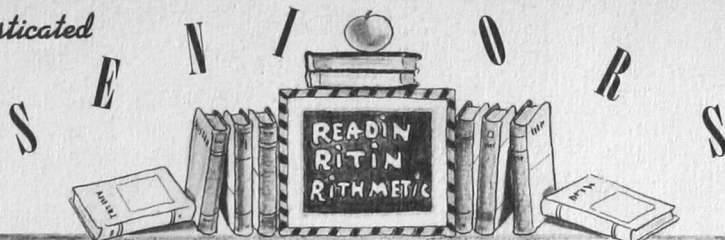


Olene Lee and Jessie Todd, Features



- No. 1 Why, Norma Lee!
- No. 2 Now, Yell!
- No. 3 A lot of bull.
- No. 4 Beauty in the snow.
- No. 5 Concentrate, Rosie!
- No. 6 Why, hello, Charles!
- No. 7 Mr. Pratt, is THAT anything to brag about?
- No. 8 After the shower.
- No. 9 Katy and Hubert.
- No. 10 Play, Don!
- No. 11 A tense moment.

Sophisticated



OFFICERS

RICHARD MOORE, President

AVIS GRIGGS, Vice-President

MARY ELLEN FLYNN, Secretary

WE ARE the Seniors, war-scarred veterans, clothed in dignity! Four years (and in some cases five or six!) have we spent wrestling the problems of government and pondering the perplexities of good grammar. We are past masters in the art of "cram," and we know all the answers when it comes to collegiate repartee! We have long since discarded the jaunty hat and screaming sweater of the typical collegian—ours the sober robes of the super-wise; ours the conservative dress of poise and sagacity!

Yes, we've been through the mill. We are firmly launched on the sea of life. We know the ropes. We are the Seniors!



MINNIE B. ADAMS—Tipton
B. S. Degree.

MARTHA FIKE ALEXANDER—Arapaho
B. S. Degree.

WARD ALEXANDER—Arapaho
B. S. Degree.



COLIN ALFORD—Tulsa
B. S. Degree, Pharmacy Club.

HELEN ALLEN—Longdale
B. S. Degree, Hammacian

EDITH AMBURN—Hollis
B. S. Degree, Hammacian.



ELIZABETH LOUISA AIMS—Hobart
B. S. Degree, International Relations,
B. S. U.

GEORGIA ANDERSON—Willow
B. A. Degree, Alpha Phi Sigma.

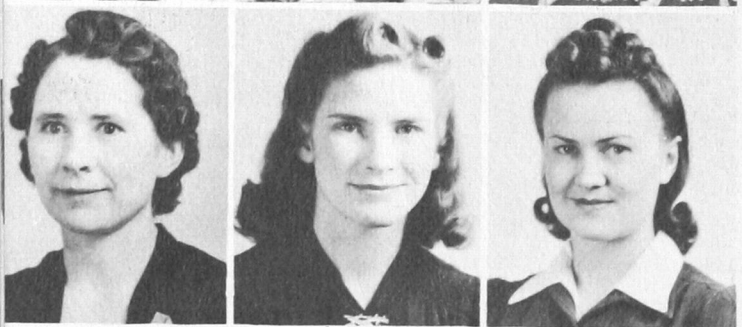
MILDRED ANDERSON—Oakwood
B. S. Degree, Alpha Phi Sigma, Pallette
and Brush.



SELLERS G. ARCHER—Geary
B. A. Degree.

ODELLE S. AUSTIN—Hollis
B. S. Degree.

BULA BACHMAN—Vici
B. S. Degree, Chorus, International Re-
lations.



ELIZABETH B. BAILEY—Leedey
B. S. Degree, Alpha Phi Sigma, Inter-
national Relations.

BARBARA BAKER—Custer City
B. S. Degree, Alpha Phi Sigma.

MARY BARBEE—Reydon
B. S. Degree.



BEULAH BARNES—Weatherford
B. A. Degree.

DAVID C. BERRY—Mountain View
B. A. Degree, Alpha Phi Sigma, Inter-
national Relations, Student Council, Bulls.

FLORENCE BLAIR—Camargo
B. S. Degree, Women's Chorus, Frolics.

NELDA ALEXANDER BOWERS—Sweetwater

B. S. Degree, Hammacian.

MAUDE MARY BOYLE—Greenfield
B. S. Degree, Palette & Brush, Kappa Delta Pi.

FRED J. BOYER—Weatherford
B. S. Degree.

★

RUTH BOZARTH—Arapaho
B. A. Degree.

GERALDINE BRANNON—Carnegie
B. S. Degree, Alpha Phi Sigma.

ANNA BREWER—Weatherford
B. S. Degree, Hammacian, Q. P.

★

JESSE BROWN—Granite
B. S. Degree, Chorus.

VERE BROWN—Colony
B. A. Degree.

BETTY JOYCE BRUCE—Weatherford
B. A. Degree, Bullpups, Forensia, Alpha Phi Sigma, Rho Kappa Mu.

★

EVANGELYN BUCKLEY—Altus
B. S. Degree.

HUBERT BULLARD—Duke
B. S. Degree, Alpha Phi Sigma, President of Bulls.

MADALINE CARPENTER—Reed
B. S. Degree, Alpha Phi Sigma, B. S. U.

★

MAXYNE CARR—Strong City
B. S. Degree, Tri-J.

VERNON CARTER—Eufaula
B. S. Degree, Bulls, Boxing and Wrestling.

MARGARET CHANCE—Bridgeport
B. S. Degree, Forensia, Alpha Phi Sigma, Rho Kappa Mu.

★

CATHERINE WEBB CLARK—Hammon
B. S. Degree, Hammacian.

LOIS PURDY COFFMAN—Weatherford
B. S. Degree, International Relations.

ESTHER WRIGHT COLCLASURE—Cordell
B. S. Degree, P. B. C.





JUNE GORRELL CONKLING—Thomas
B. S. Degree.

CLYDE CONWAY—Frederick
B. S. Degree, Bulls, International Relations.

FLORENCE RUTH COULSON—Arapaho
B. S. Degree, Alpha Phi Sigma.



ELEANOR FAY COVINGTON—Carter
B. A. Degree, Symphony, Forensia, Delta Sigma Epsilon, Wesley Players.

HAZEL COX—Mountain View
B. A. Degree, Bullpups, Wesley Players, Palette & Brush, Q. P.

VERNELLE CRELIA—Eldorado
B. S. Degree, Bullpups, Tri-J, Alpha Phi Sigma.



MATTIE CRUM—Mangum
B. A. Degree, Alpha Phi Sigma.

VIVIEN CULVER—Homestead
B. A. Degree, W. A. A., A Cappella Chorus.

LAURA MAY CUNNINGHAM—Weatherford
B. S. Degree, Forensia, Bullpups, Alpha Phi Sigma, Writers Guild.



VIRDA DAVIS—Butler
B. A. Degree.

LEONA DELK—Sentinel
B. S. Degree, Bullpups, Hammacian, Palette & Brush.

LEOTA DELK—Sentinel
B. S. Degree, Bullpups, Aviation.



MARTHA DEMING—Weatherford
B. S. Degree, W. A. A.

ELVA DICKEY—Arapaho
B. A. Degree, Palette & Brush, B. S. U., Y. M.-Y. W.

FAYE DOYEL—Rush Springs
B. S. Degree, Forensia, Alpha Phi Sigma, Student Council, Sec. Jr. Class.



A. C. DRISKILL—Elmer
B. A. Degree, Y. M. C. A., Senate.

RITA EMERY—Cordell
B. S. Degree.

PETE ENGEL—Corn
B. S. Degree, Bulls, "S" Club.

G. Y. FAILS—East View
B. S. Degree, Alpha Phi Sigma, Bulls,
International Relations.

LOY J. FERGUSON—Weatherford
B. A. Degree, International Relations.

TOMMY LOYS FEWELL—Duke
B. A. Degree, Y. W. C. A., Alpha Phi
Sigma, Wesley Players.

★

PAULINE FLEMING—Custer City
B. S. Degree, Kitawasa, Bullpups, Pal-
lette & Brush.

MARY CHARLES FLETCHER—Mountain
View
B. A. Degree, Hammacian.

MARY ELLEN FLYNN—Mangum
B. A. Degree, Y. M.-Y. W., Wesley Foun-
dation.

★

LYDIA FOOTE—Corn
B. S. & B. A. Degree, Alpha Phi Sigma.

BLANCHE FOWLER—Sweetwater
B. S. Degree, Q. P.

CRYSTAL FOWLER—Sweetwater
B. A. Degree, Alpha Phi Sigma.

★

RALPH L. FRIESEN—Thomas
B. S. Degree, Senate.

J. M. GAMBLE—Corn
B. S. Degree.

BUEL GARVIN—Hollis
B. S. Degree.

★

GALEN GATES—Weatherford
B. S. Degree

LENA GINGRICH—Lone Wolf
B. S. Degree, Pres. Palette & Brush
Club, Sec. Q. P., Dramatics, Alpha Phi
Sigma, Alpha Psi Omega.

ORLA GOFF—Granite
B. S. Degree, Bulls, Student Council,
Senate, Alpha Phi Sigma.

★

THEDA GREGG—Beaver
B. S. Degree, Forensia.

AVIS E. GRIGGS—Elk City
B. S. Degree, Alpha Phi Sigma, Kitawa-
sa, B. S. U.

LORENE FRANCES GROENEWOLD—
Loyal
B. S. Degree, Wesley Players.





JOHN GRUBBS—Brinkman
B. S. Degree.

ELMO GUTHRIE—Headrick
B. A. Degree.

MERYLE GUTHRIE—Sayre
B. S. Degree, W. A. A.



MARGARET GWINN—Weatherford
B. A. Degree, Alpha Phi Sigma, Writers'
Guild.

FRANS H. HAMMONS—Thomas
B. A. Degree, Senate.

OLGA HANNI—Weatherford
B. S. Degree, Kitawasa, Wesley Players,
Q. P.



JOHN HASKEEW—Hollis
B. S. Degree.

HELEN DAVIS HATCHETT—Castle
B. A. Degree.

J. C. HATCHETT—Castle
B. S. Degree.



LOIS FAYE HAYS—Weatherford
B. S. Degree, Kitawasa, Bullpups, Wesley
Players.

MARY LILLIAN HEFNER—Mangum
B. S. Degree, Alpha Phi Sigma, Bullpups,
B. S. U.

VIVIAN MARIE HEFNER—Mangum
B. A. Degree, Alpha Phi Sigma, B. S. U.



VICTORIA HARRIS HERRING—Foss
B. S. Degree.

FRANCES HESS—Delhi
B. S. Degree, B. S. U.

MARTHA HINZ—Corn
B. A. Degree, Bullpups, Forensia, Kita-
wasa.



RUBY DELL HOBBS—Erick
B. S. Degree.

TOMMY HODGE—Colony
B. A. Degree, Debate, Y. M. C. A., Q. P.

LOUISE HOLMAN—Sayre
B. S. Degree.

MRS. EARL HOLT—Canute
B. A. Degree, Tri-J, P. B. C., Bullpups.

GRACE HOOPER—Thomas
B. S. Degree, Kitawasa, Forensia.

LOIS HOOPER—Thomas
B. S. Degree, Palette and Brush.



★

GERALDINE HOWARD—Mangum
B. A. Degree, Forensia, Alpha Phi Sigma,
Band, Orchestra, Symphonia, Student
Council, B. S. U.

EILEEN HUDDLESTON—Faxon
B. S. Degree, B. S. U.

HELEN HUNT—Clinton
B. A. Degree, Band, Orchestra, Tri-J.



★

VIRGINIA JAMES—Eakly
B. S. Degree, Swastika, Wesley Players.

W. N. JAMISON—Weatherford
B. S. Degree.

ANNA LEE JEWELL—Weatherford
B. S. Degree.



★

KATHLEEN JOHNSON—Willow
B. S. Degree, Q. P., Delta Sigma Epsilon,
Bullpups, Presidents' Club.

TRUMAN T. JOHNSON—Vici
B. S. Degree.

HASKELL JONES—Tulsa
B. S. Degree, Pharmacy, Pharmacy Club.



★

ETHEL KAYSER—Clinton
B. S. Degree, Forensia, Diversified Debs,
Alpha Phi Sigma, Band, Orchestra, String
Trio.

MABEL KING—Cordell
B. S. Degree, Bullpups, Kitawasa.

BOB KLINE—Weatherford
B. S. Degree, President of Student Coun-
cil, Bulls, Senate.



★

MRS. SYLVIA KLINE—Weatherford
B. S. Degree, Bullpups, Palette and
Brush.

GOLDIE KLUMP—Bessie
B. S. Degree, Bullpups, International
Relations, Kitawasa.

THELMA LARISON—Vici
B. S. Degree, Wesley Players, Palette and
Brush, Y. M.-Y. W.





IRENE TAYLOR LAWSON—Foss
B. A. Degree, Bullpups, Forensia, Alpha Phi Sigma.

CLIFTON E. LEACH—Ft. Cobb
B. A. Degree.

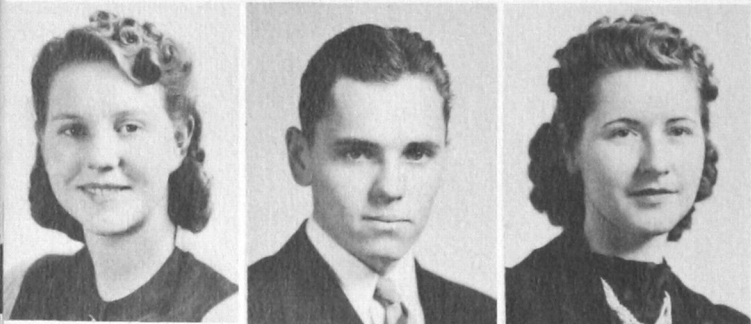
WILMA LEIGHTEN—Fort Cobb
B. S. Degree, Palette and Brush, B. S. U.,
Y. W. C. A., Alpha Phi Sigma.



ROSEMARY LEON—Tulsa
B. A. Degree, Delta Sigma Epsilon, Forensia, Bullpups, Q. P.

CHARLES C. LEWIS—Henrietta, Texas
B. A. Degree, B. S. U., Bulls, "S" Club, International Relations.

CLAUDIA LINDBLAD—Lawton
B. S. Degree, Alpha Phi Sigma, Rho Kappa Mu, International Relations, Palette and Brush.



TREVA LINDSEY—Hollis
B. S. Degree.

BOB LOVETT—Taloga
B. S. Degree, Bulls.

PAULENE LUCK—Hollis
B. S. Degree, Kitawasa, Hammacian, B. S. U.



EMMA FEWELL MADDEN—Duke
B. S. Degree, Y. W. C. A.

CORTIS MARTIN—Martha
B. S. Degree, Bulls, Presidents' Club, "S" Club.

BOBBY McDANIEL—El Reno
B. S. Degree, President W. A. A., Forensia.



ELOIS McFARLAND—Sayre
B. S. Degree, Alpha Phi Sigma.

MINNIE McKEE—Rocky
B. S. Degree, Palette and Brush.

KATHLEEN McLAUGHLIN—Hinton
B. A. Degree, Symphonia.



GENEVIEVE McRAE—Sentinel
B. S. Degree, Bullpups, Kitawasa, Wesley Foundation.

CLYDE MILLER—Moorewood
B. S. Degree, Pres. of Pharmacy Club.

OTIS DELL MISER—Lone Wolf
B. A. Degree, Senate, Student Council, Band, B. S. U., Y. M. C. A.

C. H. NELSON—Geary
B. A. Degree, Bulls, "S" Club.

ED C. NIKKEL—Hooker
B. S. Degree, Senate, Y. M.-Y. W., Bulls,
B. S. U.

MARLIN NORRIS—Mangum
B. A. Degree.

★

LILY RYAN NUCKOLS—Amarillo, Texas
B. A. Degree.

JESS T. MOORE—Erick
B. A. Degree, Pharmacy

KATHLEEN MOORE—Erick
B. A. Degree.

★

RICHARD MOORE—Weatherford
B. S. Degree.

RUBY MORRIS—Hollis
B. A. Degree, W. A. A., Wesley Players.

ORVAL MORRISON—Colony
B. A. Degree.

★

EVA MAY MOSTELLER—Taloga
B. S. Degree, Kitawasa, Rho Kappa Mu.

LORAN MYERS—Putnam
B. A. Degree.

MARY OGBURN—Gotebo
B. S. Degree, Alpha Phi Sigma, Palette
and Brush, Wesley Players, Hammacian.

★

FERNE O'NEAL—Cordell
B. S. Degree, W. A. A., Hammacian,
Forensia.

FREDA O'NEAL—Cordell
B. S. Degree, Hammacian, Forensia, Al-
pha Phi Sigma.

MRS. OLEN CARMICHAEL O'REAR—
Altus
B. S. Degree, Alpha Phi Sigma.

★

MRS. FLORENCE PAIR—Sentinel
B. S. Degree, Alpha Phi Sigma.

BETTY LOU WHEELER—Cordell
B. S. Degree, Tri-J, Forensia.

RUTH PARKER—Brinkman
B. S. Degree, Hammacian, W. A. A.





HARLAN PARKEY—Reed
B. S. Degree.

JOYCE PAXTON—Granite
B. S. Degree, Forensia, Band, Girls' Orchestra, Delta Sigma Epsilon.

JIMMY PAYNE—Enid
B. A. Degree, Student Council, Football, Basketball, Bulls.



BETHA PIERCE—Beaver
B. S. Degree.

MARY ALICE POOLE—Willow
B. S. Degree, Alpha Phi Sigma

DESSIE POTTER—Thomas
B. S. Degree, Bullpups, Palette and Brush.



MAXINE POTTER—Thomas
B. S. Degree, Palette and Brush.

IRENE POWERS—Granite
B. A. Degree, International Relations.

BERTHA RAINES—Willow
B. S. Degree.



RUBYDELL RANDOLPH—Antlers
B. S. Degree.

FREDA REAVES—Clinton
B. A. Degree.

MARY ELLEN REAVES—Cheyenne
B. A. Degree, Alpha Phi Sigma, Bullpups.



LORETTA RICHERT—Weatherford
B. S. Degree, Tri-J, Bullpups, Palette and Brush.

VERA JON RILEY—Erick
B. A. Degree, B. S. U., Bullpups.

BESS ROBERTSON—Carnegie
B. S. Degree, Palette and Brush.



TWILA LORENE ROBERTSON—Chattanooga
B. S. Degree, Palette and Brush.

MABLE JEAN RUDD—Hobart
B. S. Degree, B. S. U., P. B. C., International Relations.

DONALD RUST—Mangum
B. S. Degree, Wesley Players, Y. M. C. A.



DEVERT RYMER—Cheyenne
B. S. Degree, Alpha Phi Sigma, Bulls.

RAY SCHLICHTING—Weatherford
B. S. Degree, Alpha Phi Sigma, Senate.

BERNICE HEADY SENSINTAFFAR—Clinton
B. S. Degree.



RALPH SHAW—Vici
B. S. Degree.

GLENN E. SHELTON—Altus
B. A. Degree, Editor Annual, Bulls, Q. P., Wesley Players.

ALMA SHINN—Carnegie
B. S. Degree, Vocational Home Ec., Ham-
macian.



ETHEL NADINE SHIRLEY—Elk City
B. S. Degree.

MOSE SIMS—Erick
B. S. Degree, Wrestling, Football.

LENA NUNN SIMMONS—Erick
B. S. Degree, International Relations,
B. S. U.



SUE SIMMONS—Camargo
B. A. Degree.

BEATRICE SMITH—Reed
B. S. Degree, Alpha Phi Sigma, Palette
and Brush.

LILLIAN AUDENE SMITH—Frederick
B. S. Degree, B. S. U.



MARGARET SMITH—Thomas
B. A. Degree, Y. W. C. A., Alpha Phi
Sigma, Palette and Brush.

MABEL L. SOCKWELL—Mountain Park
B. A. Degree, B. S. U., Y. W. A., Inter-
national Relations, Debate.

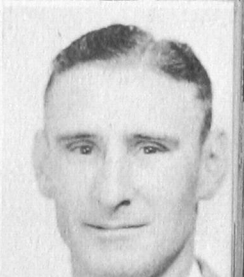
WENDELL SOCKWELL—Mountain Park
B. A. Degree, Band, Orchestra, B. S. U.



ALITA SPENCER—Albert
B. S. Degree, Y. W. C. A.

ALLORA TABOR—Hollis
B. S. Degree, Wesley Players, Alpha
Phi Sigma.

HOMER TANNER—Frederick
B. A. Degree.





BOB TEMPLETON—Weatherford
B. A. Degree.

MRS. BOB TEMPLETON—Weatherford
B. S. Degree, Music, Y. M.-Y. W., Wesley
Players, Rho Kappa Mu, Symphonia.

CHARLES M. TERRY—Weatherford
B. S. Degree, Q. P., Quartette.



BETTIE THOMAS—Sentinel
B. A. Degree, Alpha Psi Omega, Q. P.,
Bullpups, Presidents' Club.

EVELYN THOMASON—Hydro
B. S. Degree, Wesley Players, Y. W. C. A.

BEOTA TITUS—Seiling
B. S. Degree, Palette and Brush.



RUBY TRISSELL—Willow
B. S. Degree, Delta Sigma Epsilon, Bull-
pups, W. A. A.

LOLORENE VAN BUSKIRK—Avar
B. A. Degree, International Relations,
Music.

PEARL WADSWORTH—Weatherford
B. S. Degree.



WYNOLD WALKER—Sentinel
B. S. Degree, B. S. U., Palette and Brush.

CONNIE WALLACE—Blair
B. S. Degree.

THELMA PATTON WALSH—Fort Cobb
B. S. Degree, Y. W. C. A., Hammacian.



DELBERT WATSON—Mountain View
B. S. Degree.

NELLA FAYE WATSON—Mountain View
B. S. Degree.

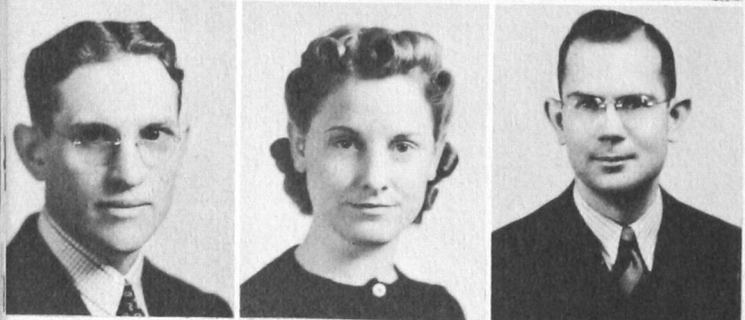
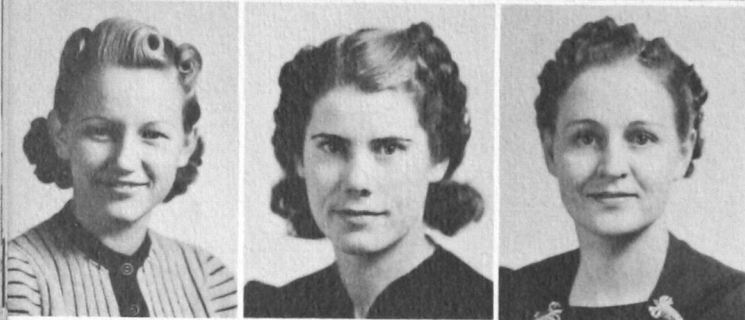
LLOYD WHITFIELD—Weatherford
B. S. Degree, Writers' Guild, Alpha Phi
Sigma.



ARTHUR J. WIEBE—Corn
B. A. Degree, Senate.

J. L. WIGINTON—Altus
B. S. Degree, "S" Club, International Re-
lations, Palette and Brush.

ORIANNA WILLIAMS—Clinton
B. S. Degree, Forensia, Hammacian, Stu-
dent Council.



JACK WITHERSPOON—Hollis
B. A. Degree.

OLETA WOOD—Foss
B. S. Degree, W. A. A., International Relations, Writers' Guild.

EDNA WOODWARD—Weatherford
B. S. Degree, Alpha Phi Sigma, Y. M.-Y. W.



BETTY WRIGHT—Butler
B. A. Degree, Alpha Phi Sigma, Writers' Guild, Q. P.

FAYE LONG WRIGHT—Cordell
B. S. Degree.

HOMER E. WRIGHT—Cordell
B. S. Degree.



VANCE COMER—Bridgeport
B. S. Degree.

GUY EWING—Hollis
B. S. Degree, Q. P., Alpha Phi Sigma.



Top left: "Oh me, another trip!"

Top right: "What, J. R. working?"

Lower left: "In the shade of the old pine tree."

Lower right: "Come now, Joe, how about it?"



Post-Graduates

JAMES AMIS—Hobart
B. S. Degree, Senate, B. S. U.

MARY LOU CLARK—Brinkman
B. S. Degree, B. S. U., Y. W. C. A., Swastika, W. A. A., Student Council.

JOHNNIE DIETRICH EATON—Weatherford
B. A. Degree, W. A. A., Palette and Brush, Bullpups.

★

JOE B. GOODRICH—Weatherford
B. S. Degree.

MABLE BURCHAM HAMBURGER—Weatherford
B. S. Degree, Alpha Phi Sigma, Q. P., Y. W. C. A., Forensia, Bullpups, Pi Gamma Mu.

HARVEY HEFFEL—Willow
B. A. Degree.

★

WILLIE EDNA MARTIN—Gould
B. S. Degree, Hammacian, B. S. U.

AUDUBON H. NEFF, JR.—Weatherford
B. S. Degree.

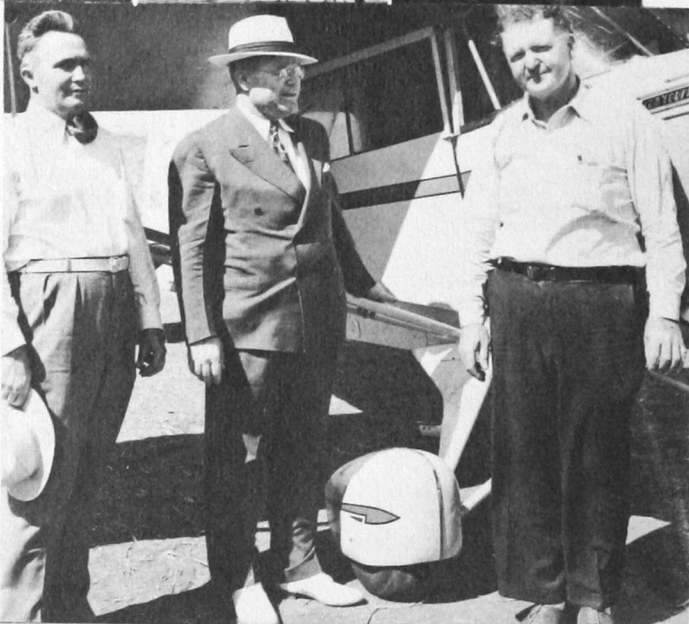
LESLIE RICE RUSSELL—Kingfisher
B. S. Degree, Q. P., Alpha Psi Omega.

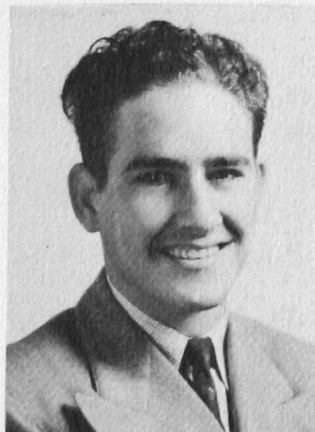
★

CHARLES N. FOLKS—Weatherford
B. S. Degree.

MRS. GLADYS JESTER—Weatherford
B. S. Degree.

MARCIA M. TURNEY—Canute
B. S. Degree, Hammacian.





OFFICERS

JACK RANDOLPH, President

JOHN HASKEW, Vice-President

FAYE DOYEL, Secretary

WE ARE the Juniors, jaunty and gay! We are fast approaching that golden period when we shall be regarded as the epitome of youth and scholarship! We feel the term "Upperclassman" applies principally to us because soon the seniors will become fogies and has-beens. We are just beginning to realize our tremendous power and importance. To us a freshman is the lowest form of animal life, and a sophomore is too insignificant to be considered.

We are the cocks of the campus—we are the Juniors!



HELEN ABEL
ILA ABSHIRE
LILLIE MAE ADAMS
ALVIN H. ALCORN



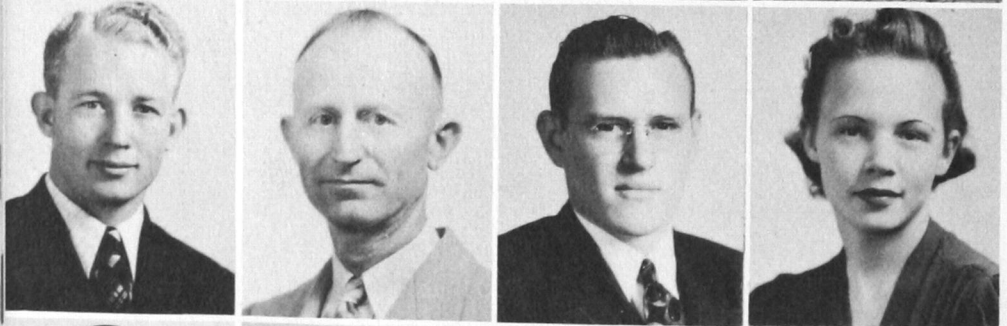
JOHNNIE ARNEY
RUTH AUSTIN
DOROTHY BERGMAN
ZORNS D. BERRY



FRANCES INEZ BIRDEN
WILL BLACKWELL
CHARLES BLANTON
MARGARET BOWERMAN



RALPH BOYCE
ANNA REE BOYD
MINNIE RUTH BRAGG
MAURINE BRASHER

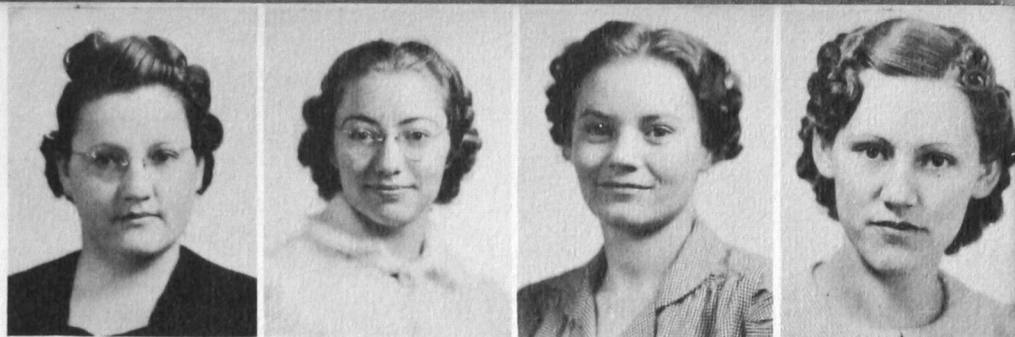


HAROLD BROWNLEE
J. L. BUCK
JIM BURNHAM
ANITA CARTER



HERBERT CHISUM
DEE CLARK
MARTIN STONE CLUCK
MAEDEL COKE

NONA COLHOUE
MAURICE COOPER
OPAL LEE COOPER
EVELYN CRAIN



★

OPAL CROUCH
MARY LOIS CUPP
CLAUDE C. CURTIS
ELVA DAVIDSON



★

MADALINE DEAN
MARGUERITE DEMING
BILL DOUGHERTY
LUCILE DOZIER



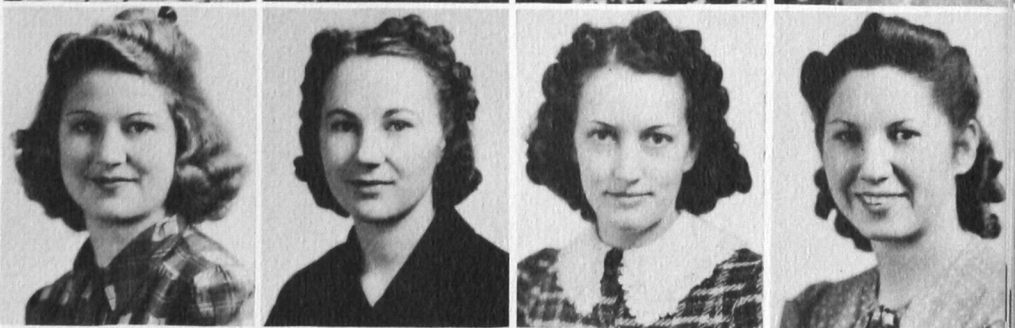
★

MARY JANE DRISKILL
EDITH ELLER
CORA DEATON ELY
RACHEL FARRIS



★

JUDY FITE
RACHEL FOLKS
JESSIE FOWLER
GERALDINE GATES



★

AURELLA GAYER
DEOLA GRAY
ROBERT GRAY
GRANVILLE GREENE





LUCILE GIBSON
TONY GOODMAN
BILLY W. GUYMON
ESTHER HALL



ALVIN HAND
ROBERT HARE
SHARON L. HARRIS
MATILDA HEINRICHS



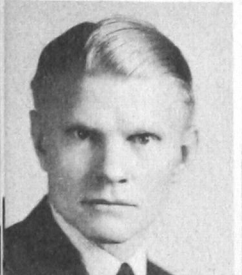
LYNN HENLEY
FREDA HINZ
PHILIP HODGES
ELEANOR HOEZMAN



CAROL FAYE HOWARD
PEGGY HUGHES
CECIL HUNTER
EDGAR IMBODEN



DORIS JENNINGS
CLETUS JOHNSON
BETTE KAISER
ELWANDA KEAS



RALPH KELTING
EILEEN KESTERSON
KATHRYN KREUL
NORMA JEAN LAMB

ERNEST LEWIS
MAXINE LIKES
ILA MAE LINVILLE
DORIS LOWRY



★

HAZEL MACKEY
MARJORIE MARINER
KENNETH MARTIN
BERTIE MEECE



★

EDNA JO MEECE
MIRIAM MINOR
MARY LEA MITCHELL
BOB MOORE



★

GAY MOORE
ELOIS MORRIS
G. W. MORRIS
MARION MORSE



★

NITA MYERS
ELVA McFARLAND
JODEAN McGUFFIN
JOE McNEELY



★

IMOGENE McPHETRIDGE
MAXINE NEWBY
LLOYD ORMAND
QUENTIN OWENS

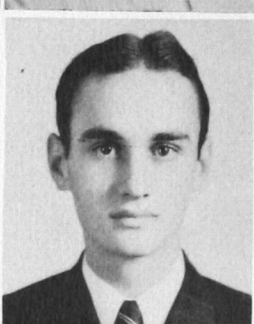




EXMA PARKER
JUANITA PARKER
LAURETTA W. PARMAN
EDITH PATTERSON



ABE PETERS
BEULAH PETTYPOOL
LaRUE POST
ZEFFA PYRON



ELMER QUIRING
MARY ALICE RANDLE
JACK RANDOLPH
PAUL RATZLAFF



IDA VAE RIFFE
JACK RILEY
LEILA RILEY
ALEX. RODRIGUEZ



F. C. RORABAW
MYRTLE DELL ROSE
GEORGIA AGEE RUSH
LOLA RUST



NORMA L. RYMER
CLAUDINE SAUNDERS
IRIS SAVAGE
FRANK SEE

ALLIE JUNE SELLS
DONICE SENTER
CECIL SHARRY
NENNIS SHINN



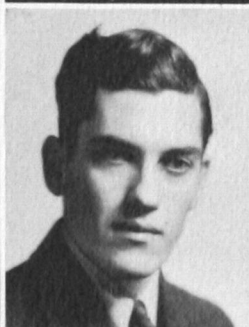
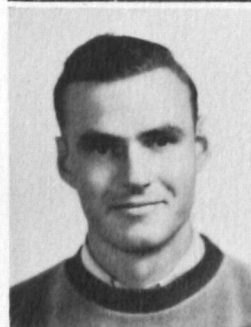
★

MILDRED SHIPP
NAOMI SHULTZ
VIVIAN SILLS
CATHERINE SIMMONS



★

DOW SIMPKINS
BYRON SMITH
EDDIE W. SMITH
HAZEL SMITH



★

LENNA JUNE SMITH
EULA SPAIN
KATHERINE STAVROS
DORIS IRENE SWANSON



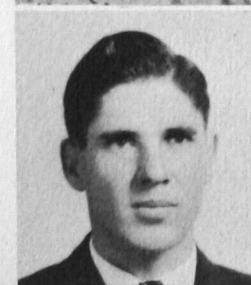
★

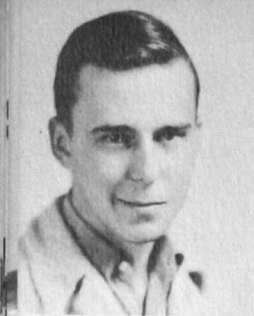
LINA TERRY
MAXINE RAY THOMPSON
TWILA THOMPSON
NOVELLA TILLERY



★

VICTOR WALLIS
LUCILLE WARD
LUVERN WIDNEY
HAROLD WILKINSON





GLENN WILCOX
J. R. WILLOWBY
CHARLES WILSON
FRED WINSTON

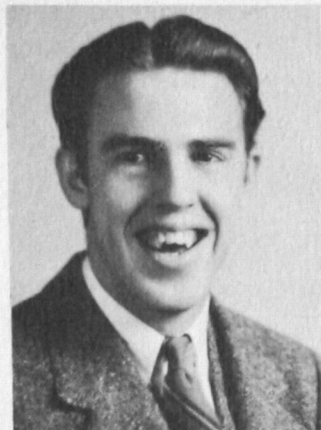


MARJORIE WHEELER
DORIS WRIGHT
RUTHIE WRIGHT
RAYMOND YEARGAN



ANNA B. ZIMMERMAN
BETTY HALLIFAX





OFFICERS

COY SIMS, President

LEROY DUVALL, Vice-President

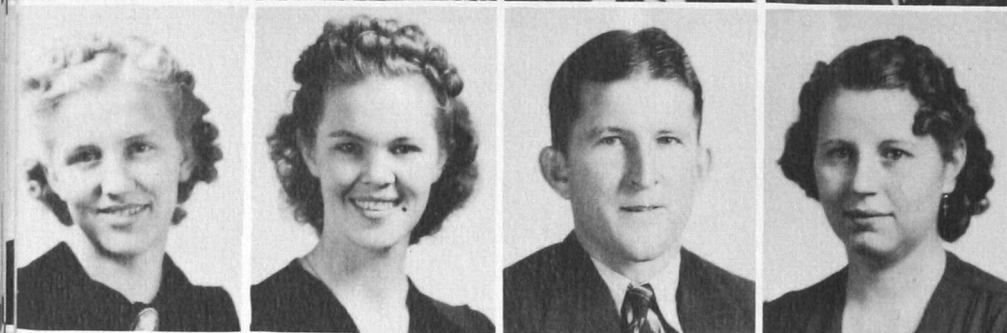
LULA MAE SELF, Secretary

WE ARE the Sophomores—but don't tell any one! True, we are happy to be done with the verdant air of the freshman—we are proud to have survived the testing period of the foolish Frosh—but then nobody envies us; as we view with misgivings the long road before us, nobody deigns a word of encouragement; in fact, no one notices us at all! To the Freshmen we are ex-freshmen—to the upperclassmen we are viewed with the same air of condescension and patronage given the Frosh.

We are just the black sheep of the campus; we are the prodigal sons and daughters with no particular use in life—we are the Sophomores!



KATHRYN ADAMS
MARY VIRGINIA ADAMS
WARREN ALLEN
WILLARD ALEXANDER



DELMA JANE ALLING
ROSIE ALLISON
ROY CURTIS ALLUMS
GLAIDA DEE ARNOLD



ORBIE ASHBY
DORIS AUSTIN
MAURINE AVANT
GLEN R. BANKS



DORTHA MAE BARKER
ELSIE BARNES
GEORGIA BARR
BILL B. BELL



FLOYD BIRDEN
JOHNNY BLANTON, JR.
BETTY JO BOAZ
EVA BOOMER



RAYFORD BOWERS
EMMA LORENA BOWMAN
KATHERINE BARDLEY
NORVA BRADLEY

ADELL BREEZE
MAXINE CALHOUN
DALE CANNON
WILBUR CEARLEY



★

DICK CHRISTY
MARGIE COOKE
MARY VIRGINIA COOPER
DORTHA MAE DICKERSON



★

BONNIE JEAN DORAN
GEORGIA L. DOUGHERTY
GRACE DOUGHERTY
RUTH DUDEK



★

MARJORIE DUERKSEN
WAYNE DYER
NUEL F. EDMONDS
JIMMIE FALCONER



★

ALENE FANCHER
ELMAN FLEENOR
LEE ELLEN FORD
A. W. FOWLER



★

JIMMY GARRETT
JOHN GIBBS
IDA CLARE GILLINGHAM
DOROTHY GROUNDS





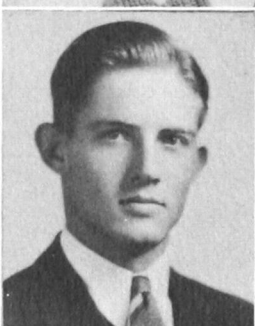
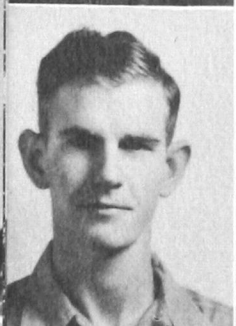
ERNEST GUNTER
BUD GUTHRIE
MRS. MARTHA GUYMON
WILLIAM E. HAMILTON



MRS. MAXINE O. HAND
ZEARL HARMON
ROSELLA HARMS
NINA HARRIS



VERNDENE HARRIS
DORIS HAYS
EDD HEIDEBRECHT
BRYCE R. HENDERSON



DON HIATT
GEORGE HILL
LYNN HINK
FREDA HINZ



HAL G. HOBERECHT
MURIEL HOLLEMAN
LUCILLE HOMSEY
HERMAN HORST



HONOR HOWARD
PAUL HUFFMAN
LEONARD HUGHES
PAT IRWIN

VELDA JANTZEN
DOROTHY JONES
MILDRED JONES
VIRGINIA L. JONES



★

MILLIE KELLY
CONRAD KENNER
ELGIN KERN
LOIS MARIE KINCHEN



★

LUCILLE KINCHEN
JACK KNOWLES
MARJORYE KRIEGER
ROSCOE LePHEW



★

ALVIN LEEDY
VIRGINIA LEONARD
IVA JO LEWIS
FERN LITTLE



★

ELEANOR LOCKSTONE
HARRIE LOEWEN
ARLENE LOGSDON
MAXINE LOGSDON



★

MAXINE MADDEN
SYBIL McCALL
T. W. McCOWN
MARY RUTH McCULLEY





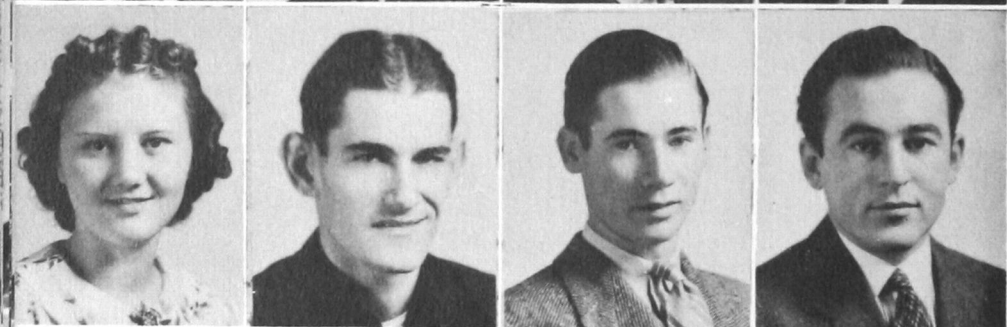
ANN McFALL
MILDRED McGUIRE
LENNIS L. McMILLAN
G. C. McWATTERS



DALE E. MELLING
WAYNE MELTON
JONE MILLIGAN
NEIL MILLINER



CECIL MILLS
SAM NEILL
FRANK NIKKEL
LOWELL ODEN



SOPHIA*ONDRACEK
DURWARD PARKER
LeROY PASSMORE
BRUCE PHIPPS



MORSE DEAN PIGG
LaVELLE POARCH
PATTIE POST
OPAL RAMEY



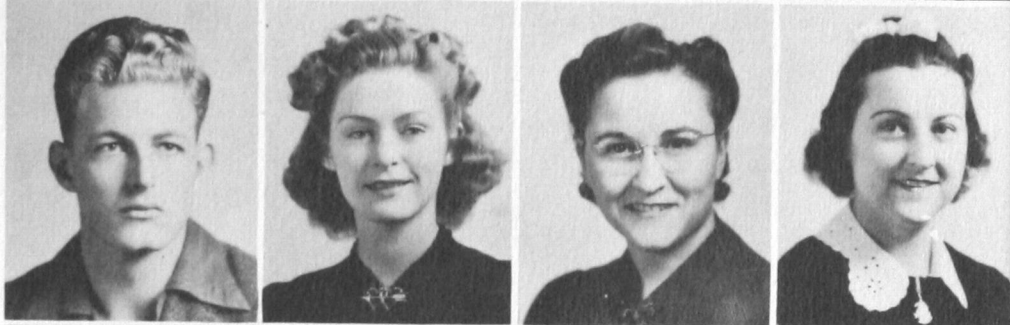
LEONARD RATZLAFF
GENE REDDEN
LEONARD REIMER
JULIUS REMPHER

WANNA ROACH
MRS. IVAN ROBERSON
IVAN ROBERSON
BILL ROGERS



★

C. A. ROSE
INA MAYE RUSK
VALLIE RUSSELL
JULIA SCHRADER



★

LULA MAE SELF
GERALD B. SERIGHT
ALIENE SHARP
HAZEL SHAW



★

VIVIAN SILLS
COY SIMS
ALICE FAY SIMMONS
MARGARET M. SLATEN



★

MARYA JO SMITH
MELBA SMITH
CLAUDE STACK
GEORGE STACK



★

PATTIE STEWARD
LORENE STEWART
DORIS STOCKWELL
ROSEMARY STRAUB





TED STREUN
MARY K. STUNKEL
DELMAR SUFFRIDGE
NONA SWEENEY



RAYMOND TABB
GLENN A THYS
EDWARD L. THREADGILL
FRANCES TRACY



IRENE TRAWICK
MARY VAN GUNDY
PAUL W. VENABLE
RAY WALDROP



MARTHA WARKENTIN
BETTY JO WEBER
FLORENCE WEBER
WAYNE WEESE



ROWENA WHISENANT
ELBERTA WHITFIELD
ROBERT WIENS
MELBA WILBURN



MARY WILCOX
JEWEL WILCOXSON
JIMMIE WILKINSON
FLOSSIE WILLIAMS

MARGARET WILLIAMS
ELIZABETH WOGMON
JAEKY WRIGHT
KEITH WRIGHT



★

LORRAINE WRIGHT
DORRIS WYLIE
OLENE LEE





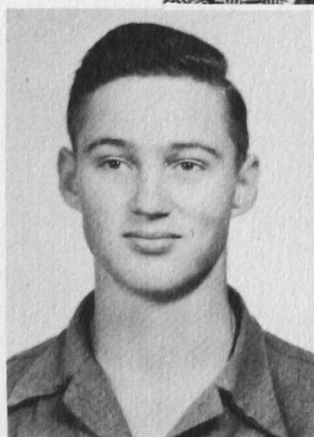
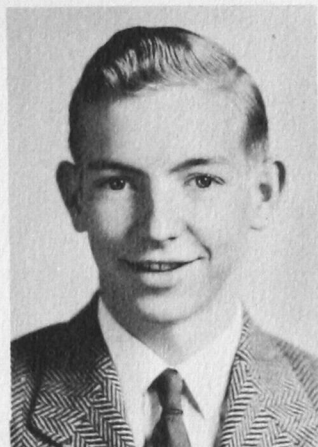
**PROBLEM: FIND OUR PRESIDENT
IN THIS PICTURE.**

Wrong! He is the handsome young lad
with the long hair and ribbon! The
others are left to right: Dale, Damos,
Darrell, Mark and Mae Boren, father
and mother, Preston, James and Lyle.



Remember our big sign last Christmas? The
girls are Sue Anna Shofstall and Rosemary Leon.





OFFICERS

ERNEST DAVENPORT, President

BILL BARNETT, Vice-President

DOROTHY HOLDEN, Secretary

WE ARE the Freshmen—campus life has just begun! The land of themes and pigskins, rallies and bon-fires is all new to us. Contrary to popular opinion, our lot is a happy one! Our mistakes are excused on the grounds that we aren't supposed to know anything anyway; our blunderings are regarded as the natural course of freshman verdure. We are new-fledged college students who are intensely proud of our new station, even if it is on the lowest level and tinged with a greenish hue. No one expects us to set the campus afire, though we come very near doing it with our flashy sweaters and flaming ties!

Our road is new and adventure fraught—out of our way, me hearties, we are the Freshmen!



DOTTIE MAE ADAMS
ERMA ADLER
CREDA A. AINSWORTH
DELBERT ANDERSON



NAOMI PARKER ALCORN
A. J. ALEXANDER
ARCH ALEXANDER
DERYLE K. ALLEN



LOETA ALLEN
RUTH MARCOM ALLSUP
MARJORIE ASHER
BERNICE ATCHLEY



ILA PEARL AYRES
VESTA BACHMAN
ROVERTA BARKER
BILL BARNETT



KATHLEEN BAXTER
HAWORTH BEATY
DARRELL D. BEAUCHAMP
GLADYS L. BEETS



RADA FERN BERRY
YSLETA BERRY
VIOLA BOATMAN
VELLON JUNE BOCK

SAMMIE JO BEAVERS
 ARMETTA IRENE BOND
 HAROLD BOYD
 BESSIE N. BOZARTH



★

RUTH BLACK
 ZUDIE BLAHA
 GLADYS M. BRADFORD
 MARJORIE BRATTIN



★

KATIE RUTH BRICE
 JESSIE MARIE BROWN
 C. D. BROWN
 RAY BROTHERS



★

DORTHY BRUCE
 HAZEL BULLARD
 F. C. BURCH
 EUNICE BURCH



★

PEGGY BURCH
 JACK BURGER
 IVA LEE BURT
 LAWRENCE BYARS



★

ROSE ANNA BLACKBURN
 RAY B. CAIRNS
 JACK CALMES
 THEL CAMPBELL





MYRTIE IRENE CARD
ETHEL CAROTHERS
PEARL CAROTHERS
PAUL CARPENTER



GAYLE CARPENTER
TOMMIE CARRICK
FAITH MARIE CARTER
JULIAN CASE



PEGGY CASWELL
G. C. CHAMBERS
BERNARD CHASSOT
HUBERT CHITTY



CHARLES CLARK
KATHRYN CLARK
LORETTA CLIFTT
ELSIE LEONA COKE

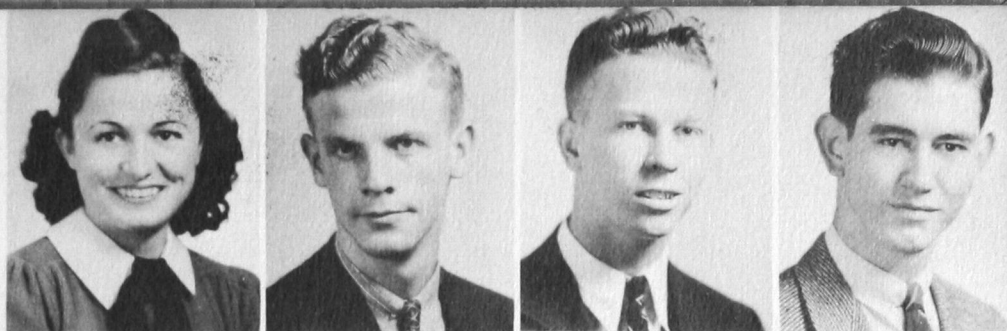


OPAL COLE
J. W. CONLEY
OCIE COTTER
BONNYE COTNEY



ILA FERN CORNING
BLANCHE COX
DELMER COX
SANDERS COX

WINIFRED COX
FRED CREECH
DOUGLAS CRONKHITE
GEORGE LEE CUTSHALL



★

JEANNE DAVENPORT
LOCKEY DORIS DAVIS
PAUL DAVIS
HARVEY DAY



★

DELPHA DAY
OPAL MAE DECK
LORAN DEMING
ALENE DeVORE



★

RAYMOND G. DeVERSE
WARREN DIBLER
ROY DILLAHUNTY
RUTH DODSON



★

RAYMOND DOUGHERTY
VIRGINIA DUFF
ROGER DUNCAN
LENORA E. DUNN



★

WAYNE DYER
DON EATON
DAN EDIGER
KENNETH EPPISON





ARCHIE A. ESPOLT
BEN EVANS
KENNETH FANNING
L. J. FERGUSON, JR.



EVERETT FLANSBURG
MARY FOLEY
ROSCOE M. FORD
HELEN FORD



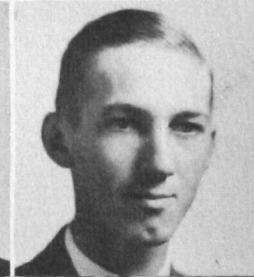
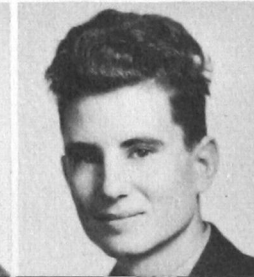
WENDELL FRANCIS
ONETA GARVIN
JUANITA GEE
LOLA MAYE GODBE



HOWLAND GOODWIN
STEVE GRAHAM
RICHARD GREENHAW
IONE GREEN



PAULINE GRIFFIN
BUDDIE GROMER
WILLIAM L. GROVES
JANE LEE HALL



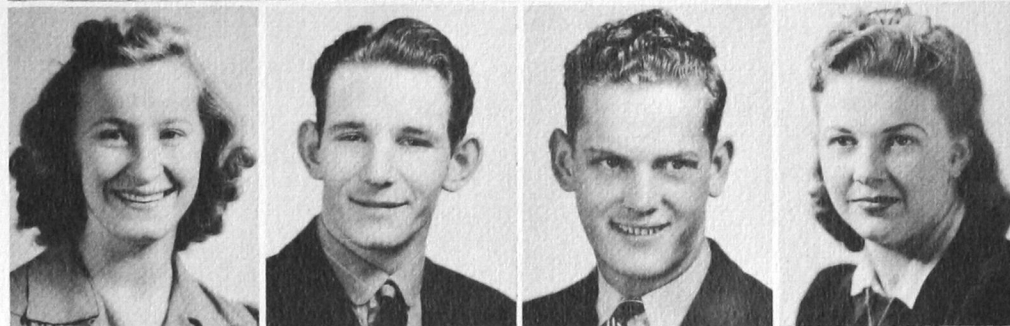
VAN HALL
ELOISE HAMBURGER
FRED HAMBURGER
LEVI HAMBURGER

BOB HARDIN
ROBERT L. HARNESS
ELLEN HARMON
E. L. HARRIS



★

JEANNETTE HARRIS
ELI HARRISON
ALLWYN HART
NORMA LEE HATHAWAY



★

ODELL HAWKINS
BONNIE MAE HAYDEN
RUTH HEATH
ALLEN HEIDEBRECHT



★

L. B. HERRING
MARJORIE HICKMAN
MARGIE HICKS
HARRY HINK



★

BENNIE FAYE HIX
IRMA HINZ
MILTON HINZ
JAMES HOGUE



★

MARGARET HOGGET
MARIE HOGG
DOROTHY HOLDEN
CURTIS HOLLINGSWORTH





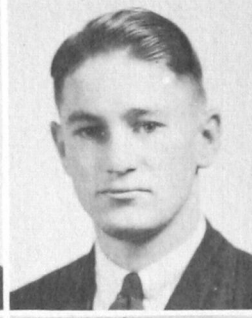
BILLIE JEAN HOWARD
EILEEN HOYT
MYRA HUNT
ROYCE HUNTER



ATHALIE ICE
GEORGE IKARD
BAXTER GLENN JARRELL
HAROLD W. JAMISON



GUS JAMZEN
MARJORIE JAQUES
ALICE EILENE JOHNSON
CLARENCE JOHNSON



DALES JOHNSON
EDWARD JOHNSON
PAUL JOHNSON
THELMA LEE JOHNSON



ALFRED E. JONES
MARY ANN JONES
ELLEN F. JORDAN
JUNE ANN JORDAN



BEATRICE KELLEY
DOROTHY KELLEY
FRANCES KENDALL
ARVILLA JANE KERR

JUANITA KNIGHTON
ILA JO KNOX
LOIS LaRUE
INEZ LEACH



★

ARCHIE LEWIS
EDMOND LEWIS
JUANITA LIKES
WESLEY LOGAN



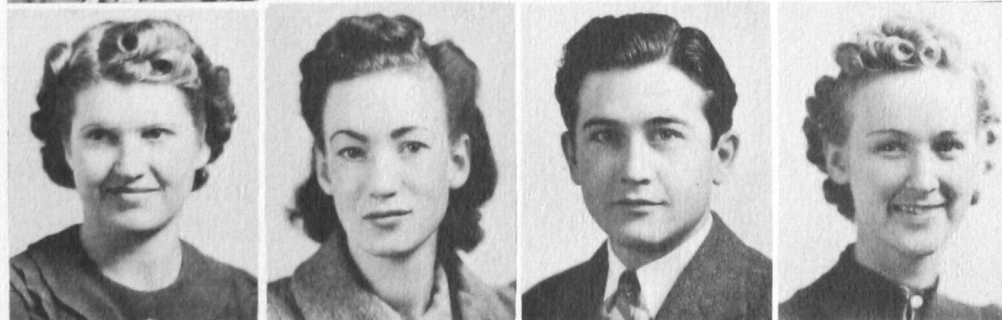
★

LOUISE LOVEJOY
WANDA LOVELACE
ELLA LUMPMOUTH
RAYMOND MACKLIN



★

IVRY MALONE
BONNIE FAITH MARTIN
S. J. MARTIN
PAULINE MASONHALL



★

STAR MASQUELIER
FRANCES MEINERT
NAOMI MIDDLETON
BELVA NEALE MILLER



★

LORA LEE MILLER
BETTY JO MILLIGAN
MARGARET MINTON
IRENE MITCHELL





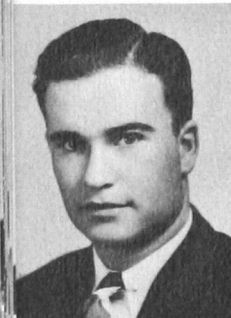
JEAN MITCHELL
CHARLES McCOLLOM
NELLIE ROSE MCCOOL
ALEEN MCDANIEL



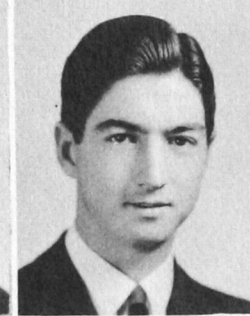
HELEN McLAUGHLIN
DOROTHEA McNAUGHT
ANNA MAE MOAD
MARY ELLEN MOHR



WANDA MONROE
EUETEVA MOORE
REX PURNELL MOYER
NEIL MURPHY



RALPH MURRAY
JUANITA MUSE
DORIS SUE NELL
GERALDINE NELL



WANDA ANN NIPPERT
MARY ESTHER NOKES
ALVIN NOWLIN
ALVIN NUSZ



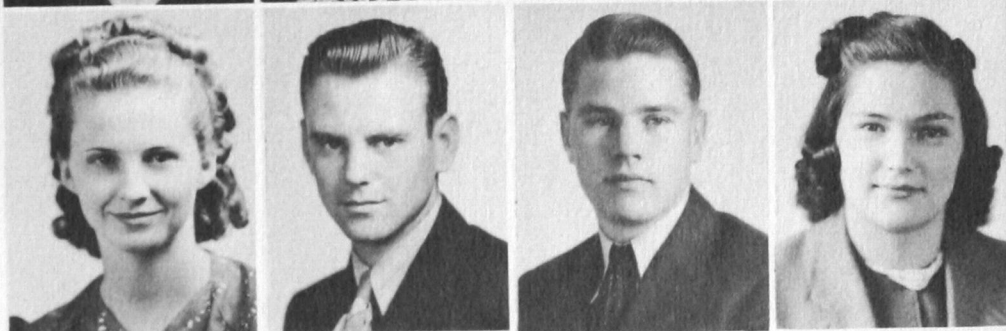
LEROY ODEN
REBA NELL ODOM
NORVA OGLESBY
MILDRED JUANITA OWEN

BERNEICE PADEN
MARGUERITE PARKER
VIRGINIA PARKER
ROBERT PARSONS



★

DORTHY WANDA PAXTON
LON PEARSON
JOHN PENNER
ELEANOR PERRY



★

ESTHER PHILLIPS
JOE PHILLIPS
OPAL PIGG
JOEL POTTER



★

JENE POWELL
JOE POWELL
LA RITA PURDY
CHOLSYE PYLE



★

IMOGENE RANEY
MARCELLA RAY
LEONARD REAMS
NEWTON REAVIS



★

JANET HARDING REDDEN
FLO RISENHOOVER
DORIS ROBERTSON
EDITH RUSSMAN





VERNA REIMER
EVA MAE REYNOLDS
ELLA BETH RIDDLE
EDNA ROBERTSON



BORDER ROGERS
MARVIN ROTAN
DOROTHY FAYE ROYAL
GALE SADLER



YALE SADLER,
HERSEL SALYER
LA FRANCE SASSEEN
DOROTHY SCALES



HELEN B. SCHMIDT
GERALDINE SCHWARTZ
EVELYN SELF
ROBERT LEE SENIOR



OLLIE SHIPP
JOY SHOCKLEY
SUE ANNA SHOFSTALL
FRED SHOOT



ALLEN SIEMENS
ERNEST M. SIMPSON
GLENN SITZMON
LOREINE SKINNER

ARTHUR E. SHOTTS
KATHRYN SIMPSON
MARY LOU SMALLEY
ALICE SMITH



★

FRANK SMITH
LORENE SMITH
PRISCILLA SMITH
CHARLENE SOLDOW



★

BONNIE SPRADLIN
JOSEPHINE SPRADLIN
TOM STANTON
PAUL C. STARKS



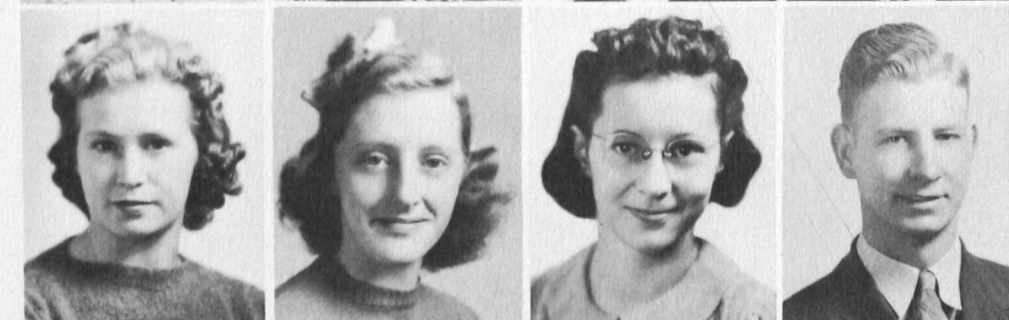
★

NAOMIE STEWART
MARGARET STIDHAM
ROBERT STOOKSBERRY
GLENN STOUT



★

AUDREY MAE STROTHER
JERRY STROUD
EVELYN SWITZER
J. R. TABOR



★

BEULAH TAYLOR
BEULAH LEE TAYLOR
LULA MAE TAYLOR
NELIA B. TEMPLETON





CLAUDE THOMAS
ELNOR THOMAS
SOLON THOMAS
OPAL THOMASON



THELMA THOMASON
WILLIAM THOMPSON
JESSIE TODD
SYLVIA VANCELEAVE



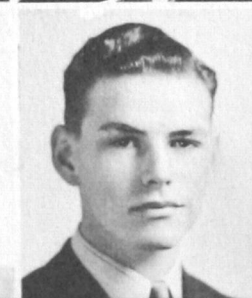
PAT VAN PELT
LEROY VINSON
HARVEY WAGONER, JR.
IRENE WALBURN



OLETA M. WALDROP
ALVIS JOHN WARE
WESTON WEEMS
MELVIN WELLS



WANDA WILHELM
GERALD WILLIAMS
KATHARINE WILLIAMS
VERNON WILLIAMS



HELEN WILSON
BYRON WOLFE
SAMMIE WOODARD
JOE WOODRUFF

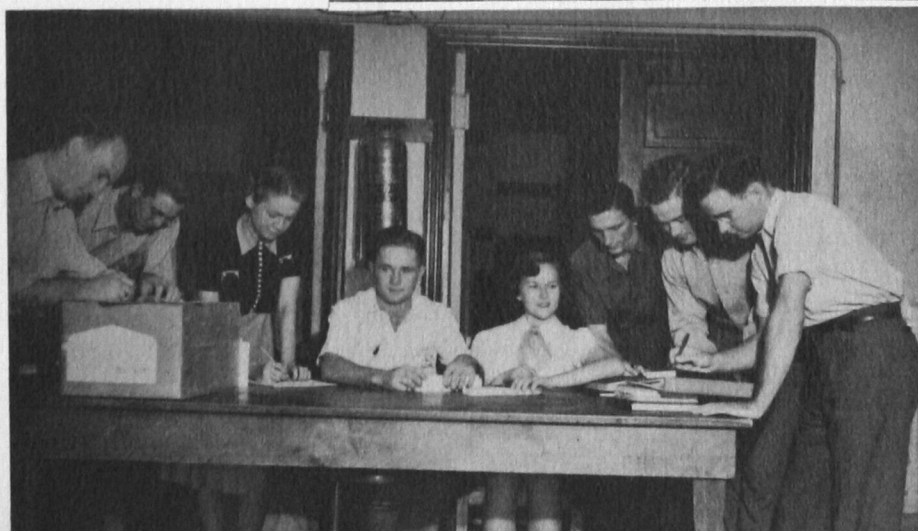
LILA LEE YOUNG
FREDA ANN YOUNGLOVE



*Victor and vanquished shake
hands after a hot election.*

*Orla Goff, first semester presi-
dent of the student council and
Dee Walburn, runner up.*

Students voting.



BEST CITIZEN 1941



Glenn E. Shelton

☆ Editor-in-chief, 1941 Bulldog ☆ Staff writer and cartoonist for The Southwestern
☆ Conquistadores ☆ Wesley Players.

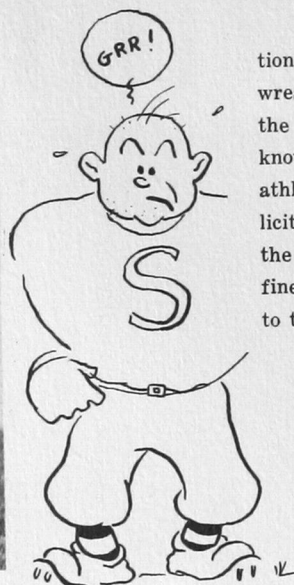
BEST CITIZEN 1941



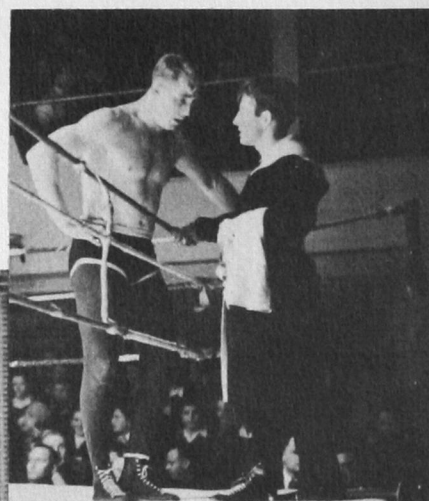
Faye Doyel

✧ Who's Who in American Universities ✧ Secretary of Forensia ✧ Alpha Phi
Sigma ✧ Secretary of Student Council.

Outstanding Boy Athlete MULSEY SIMS

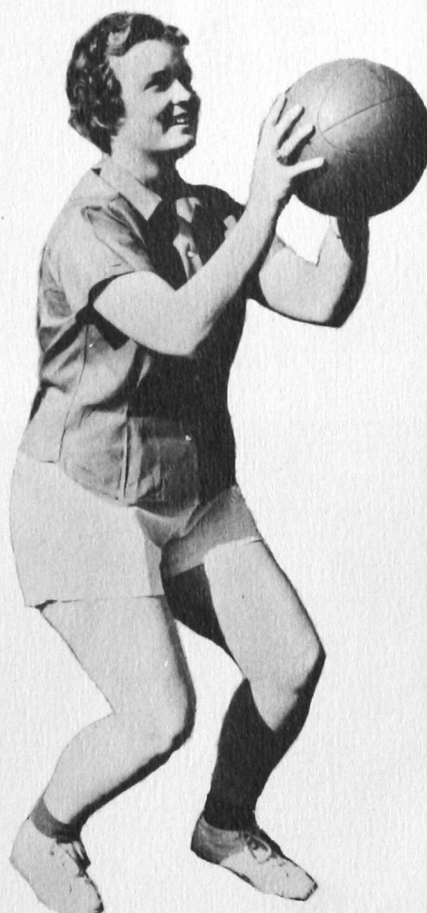
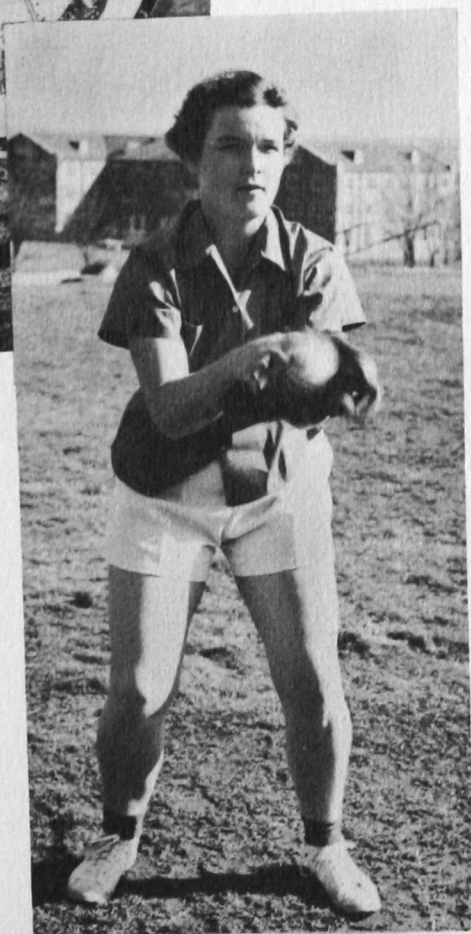
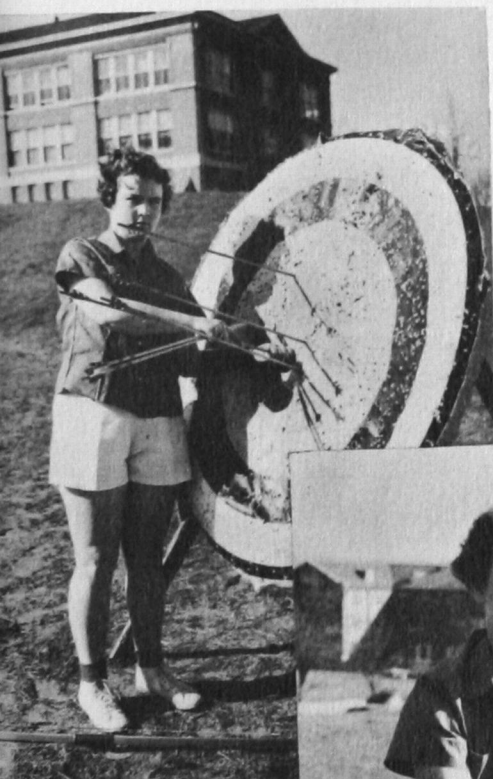


"OLD MAN MOSE" Sims, once national A. A. U. champion heavy-weight wrestler and twice all conference tackle on the Southwestern football team, is as well known for his genial good nature as for his athletic prowess. Unchanged by wide publicity and its attendant glory, "Mose" is still the same great athlete, student and all round fine fellow that he was when he first came to this school.



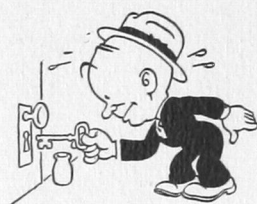
Outstanding Girl Athlete **BOBBY McDANIEL**

EQUALLY PROFICIENT with a tennis racket, baseball, basketball or bow, Bobby is truly the all-round athlete. She is always courteous to opponents, a fine example of robust health, and displays at all times a fine quality of sportsmanship and a zest for any game in which she participates.

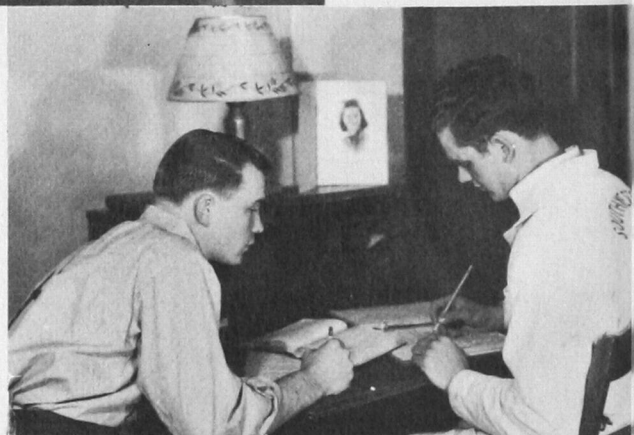


D O R M

... Neff Hall



THE BEAUTIFUL boys' dormitory, named for the late Audabon H. Neff, is situated at the extreme western side of the Tech campus. The simple, convenient rooms are equipped with typical collegiate furnishings and the large living room is spacious, well-lighted and comfortable. The familiar term, one big happy family, can well be applied to the boys of Neff Hall. It is a fraternity of friendly college students, athletes and scholars, blending academic and social life, fun and study.



The picture to the left was posed and the "Dan McGrew" atmosphere created. Top picture was made in the P. B. X., center picture in the living room, and lower picture in one of the individual rooms.

LIFE

... Stewart Hall



THE GIRLS' dormitory, one of the most beautiful buildings on the campus, was named after Dr. Dora Ann Stewart, head of the history department. The living room, similar but larger than that of the boys' dormitory, is probably the center of social life at Southwestern. It is comfortably furnished and contains a radio, a piano and many games for the students' diversion.

The college cafeteria is situated in the basement of this building. It is very modern, and good, wholesome food is served at all times.



HOMECOMING...1940

ON SATURDAY, October 26, 1940, Southwestern staged one of the most successful homecomings in the history of the school. The grand parade was colorful with floats of all descriptions. Twenty-six bands, including the Southwestern band, resplendent in new uniforms, added to the success of the occasion. The football and baseball fields were dedicated and the event was crowned with an overwhelming defeat of our arch foes of the gridiron.





★ B E A U T Y ★

MISS
LULA MAE
S E L F

S
O
U
T
H
W
E
S
T
E
R
N
S
W
E
E
T
H
E
A
R
T



MISS
IMOGENE
RANEY

F
O
O
T
B
A
L
L

Q
U
E
E
N





MISS
CAROL FAYE
HOWARD

B
A
N
D

Q
U
E
E
N



MISS
OLLIE
SHIPP

H
A
R
V
E
S
T

Q
U
E
E
N



... They Come

BEAUTIFUL



Jessie Todd



Virginia Jones



Belva Neale Miller



Dorothy Holden



Frances Tracy



Ruth Wright



At
SOUTHWESTERN



Myra Hunt



Marguerite Deming



Lora Lee Miller



Virginia Leonard



Jimmie Wilkinson



Doris Hays



MISS
EVELYN
CRAIN

S
U
M
M
E
R

T
O
U
R
S

Q
U
E
E
N



... attended by Success and Glory

Bob Hawk Returns...!

SOUTHWESTERN Institute of Technology has among its vast alumni a poignant personality of the ether waves, a character of wide renown. When Bob Hawk, reigning star of the popular "Take it or leave it" program returned to the familiar haunts of his early college days, a figure of fame and success, he fulfilled his life's most persistent dream. An easy winner in local forensic tournaments, he attained the upper rungs on the ladder of success with equal ease. They included the positions of sports announcer, dance program announcer, reader of poetry and chief quizzier on his current show.

Southwestern is proud of Bob. It is proud of its contribution to our national diversion; it is proud that one of its sons can return, a child of fame, sprinkled with the stardust of popular esteem, and present such a fine example of the many opportunities offered by our great country.



Bob Hawk

Two members of Southwestern alumni in the U. S. Army Air Corps. Bill Renfro, former national A. A. U. Champion wrestler and Albert DeFehr, last year's annual editor and best citizen.



AL



BILL



Instructor and Student

Wings . . . Over Southwestern

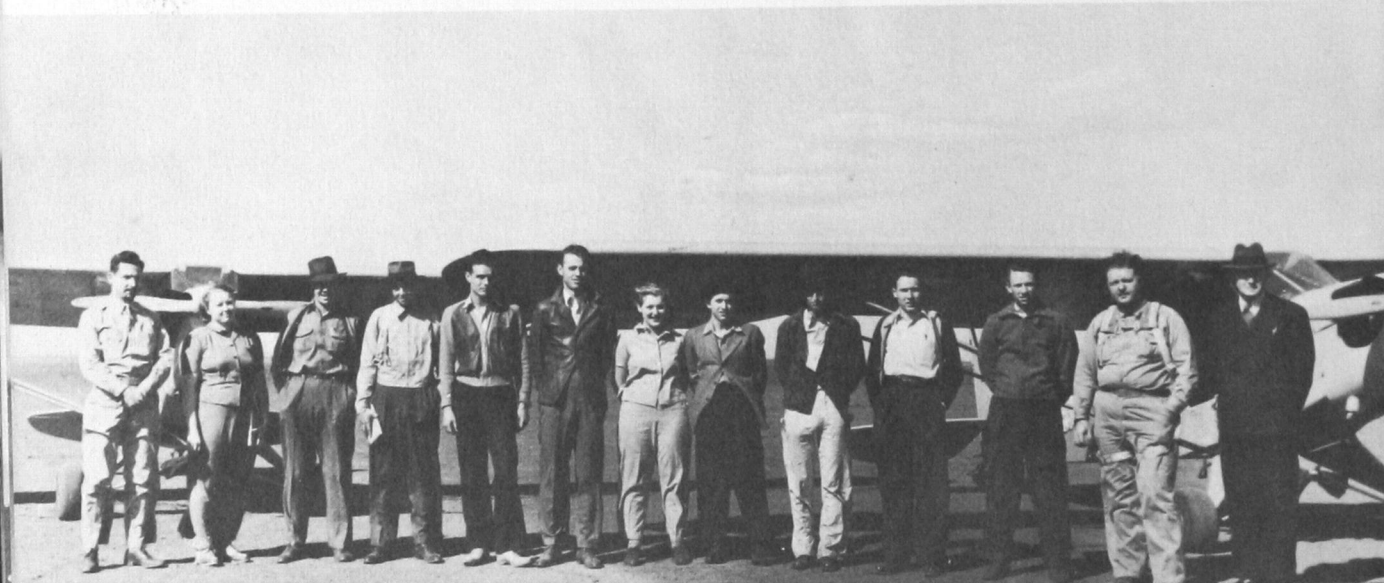
CROWNING unceasing effort on the part of our administration and friends, came the announcement that Southwestern had been awarded the government's primary Flying School Course. Since that time in early 1940 the course has been continually improved. More students have been added, new planes purchased, and better and more convenient facilities provided.

The course is divided into a ground school and a flight school. In the ground school, the student is required to spend four hours in class room work each week for one semester. This class room work includes a study of the history of aviation, the theory of flight and aircraft, civil air regulations, practical air navigation, meteorology, parachutes, aircraft power plants, aircraft instruments, and radio uses and terms.

The flight school includes three to six hours per week in the air until a minimum of 35 hours have been completed, when the student will qualify for a private pilot's license.



Dr. Boren Takes a Ride



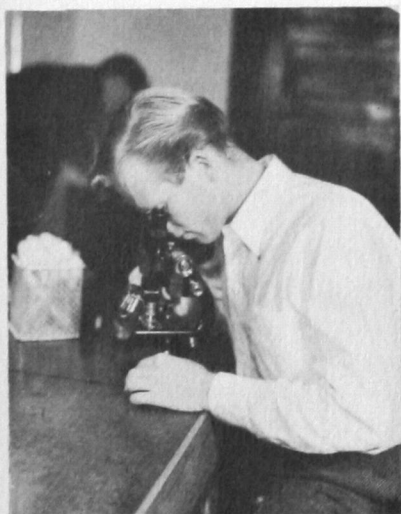
THE great mystery of life! That is the quest in which these students of biology find themselves engaged. Good citizens all—they occupy themselves in the study of life, following the American policy of furthering a constructive science for the welfare of all



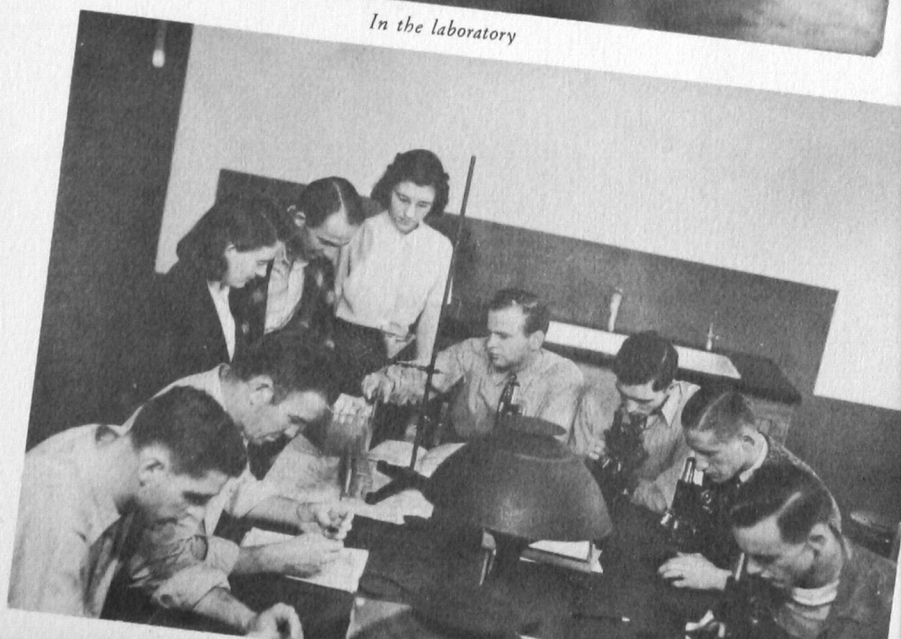
Well, Pasteur had to learn!



In the laboratory



Experiments

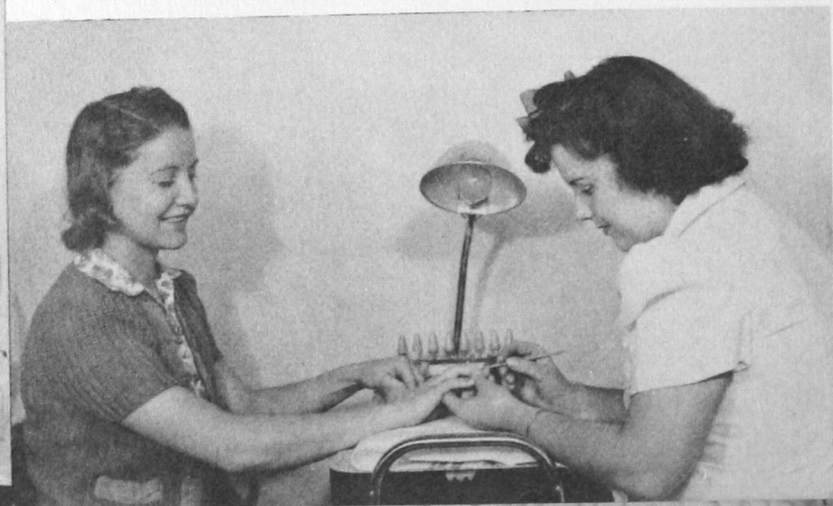
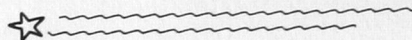


A Thing of Beauty

A JOY forever is our cosmetology department! Established last year as a new link in Southwestern's ever growing chain of practical, down-to-earth courses, this department now finds itself among the most popular in the school. Here, with the aid of the most modern equipment, the young beautician is schooled in cosmetology theory, sanitation, and the intricate science of the madame's coiffeur.

The cosmetology laboratory, housed in the picturesque new Vocational building, is a large, well lighted room, always clean and sanitary beyond reproach. The visitor is impressed with the atmosphere of activity, the well ordered routine and the immaculate, white uniformed students who ply their work with eagerness and industry.

The many students who graduate from this vocational school step out into a world eager for their services and they experience little difficulty in finding good positions.

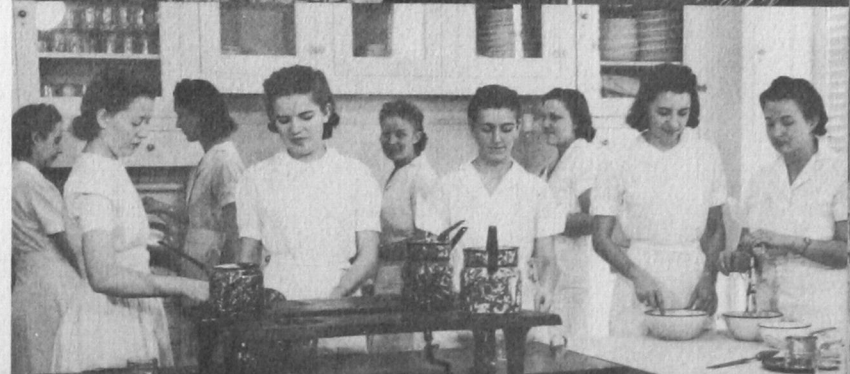




Good Americans

GOOD Americans are these students of the Home Economics department. Filling the traditional and sacred niche of American womanhood, they learn the domestic sciences: how to cook a savory, well balanced meal, the art of good costuming, how to create their own wearing apparel and many other occupations useful in building a better home.

This department, ever popular with students, is equipped with a modern kitchen combining all the most up-to-date cooking utensils. Sewing rooms and theory classrooms are ample and well stocked, altogether making this an ideal laboratory for the domestic student.





HEALTH

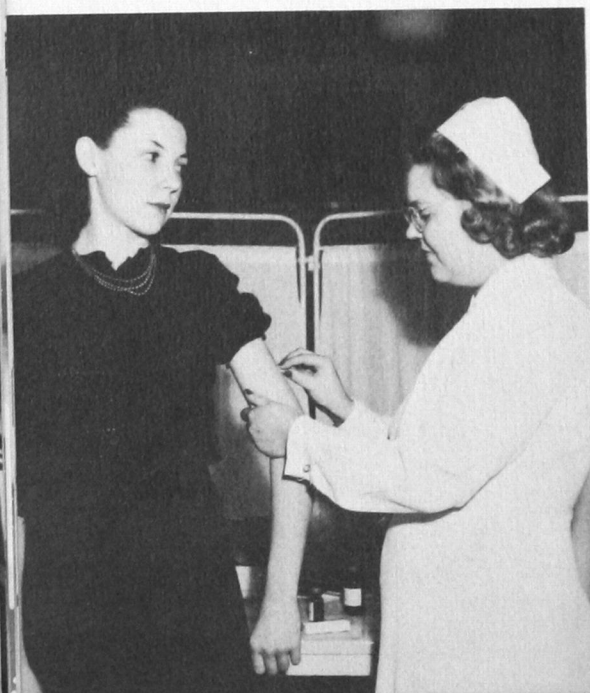


THE DEPARTMENT of Student Health at Southwestern includes an infirmary, dispensary, diagnostic laboratory, and physician suite with a personnel of physician, pharmacist, technician and registered nurse.

Students are examined and advised regarding any remediable defects found at the yearly physical examina-

tion. Remedial programs are devised wherever feasible with special classes in physical education organized to assist this program.

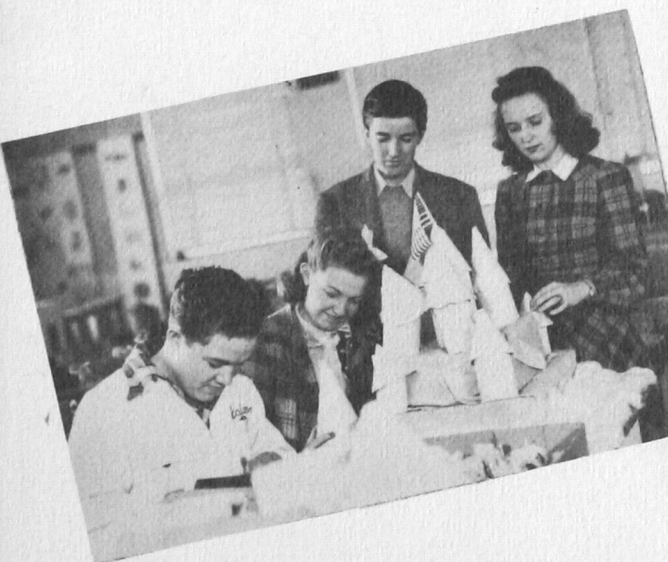
The services of the college physician are available at all times to students. He diagnoses and prescribes for students. The laboratory is thoroughly equipped for all ordinary diagnostic procedures.



Artists ... ARE BORN

THE ART DEPARTMENT of Southwestern Tech is justifiably ranked among the state's best. The spacious drawing room is equipped with modern, hardwood desks; the walls are lined with individual steel lockers and the entire room is always flooded with natural light. The adjoining room, equally large and well lighted, is used for exhibitions. The frequent visitors are delighted to find an ever changing procession of works from the nation's leading masters hanging on its walls.

A place of activity, this department at all times is busy turning out posters and general art work for the entire community.

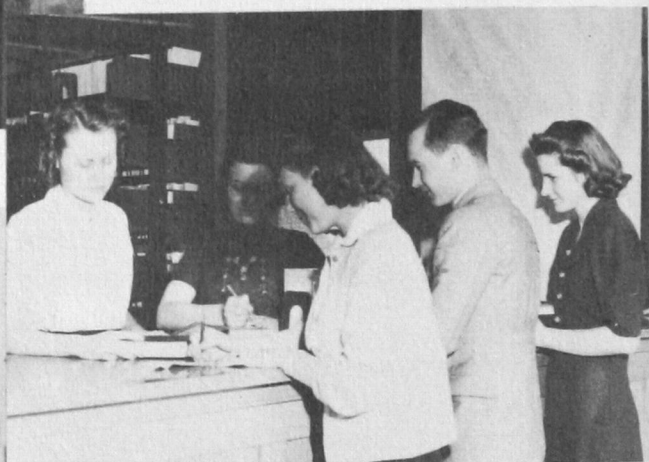


BUSINESS

SHORTHAND, bookkeeping and general business courses are learned under the capable supervision of Mr. Guffy.



Study in the Library



Checking Out Books



Learning the Ways of Business





PHARMACY

THE SCHOOL of pharmacy has attracted wide and favorable attention, having students enrolled from over the entire state and Southwest. It is among the most active departments in the school.

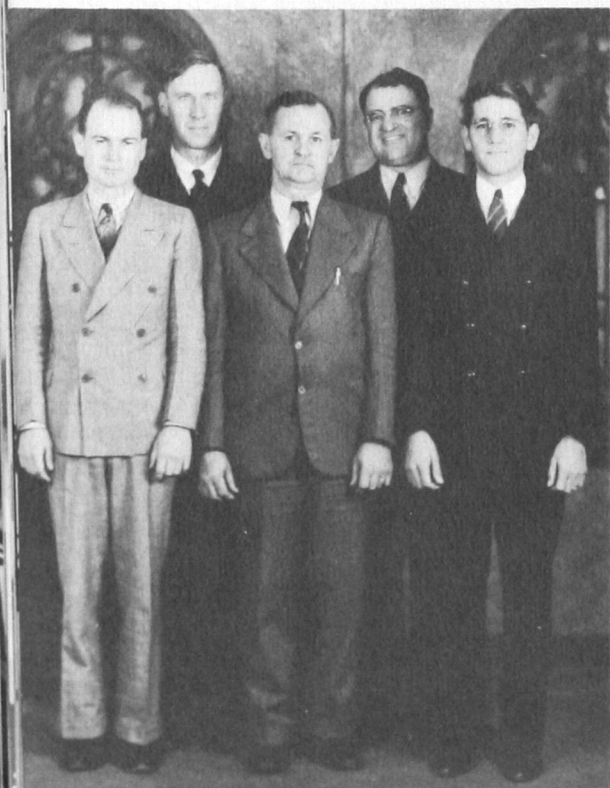
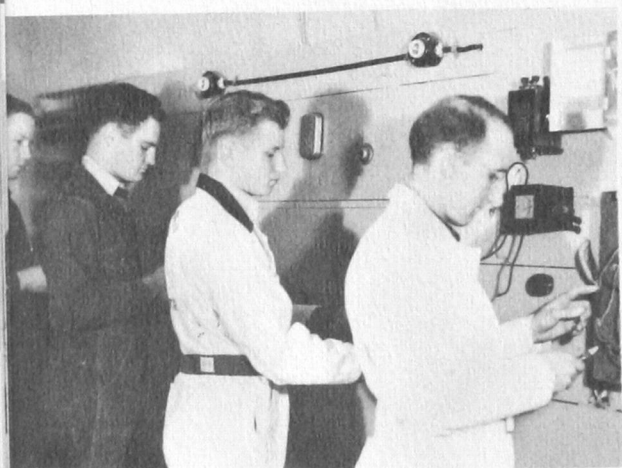
Of course there is nothing to a neophyte druggist like the compounding of drugs, and this is just what the pharmacists at Southwestern Tech spend most of their time doing, as can be seen from this page.





ELECTRICITY

UNDER the supervision of Stanley Hink, our electrical trades department is doing much fine work. Aiding in supplying national defense needs, the department is turning out competent, well-trained electricians.



★ ★ ★ ★

STUDENT MINISTERS

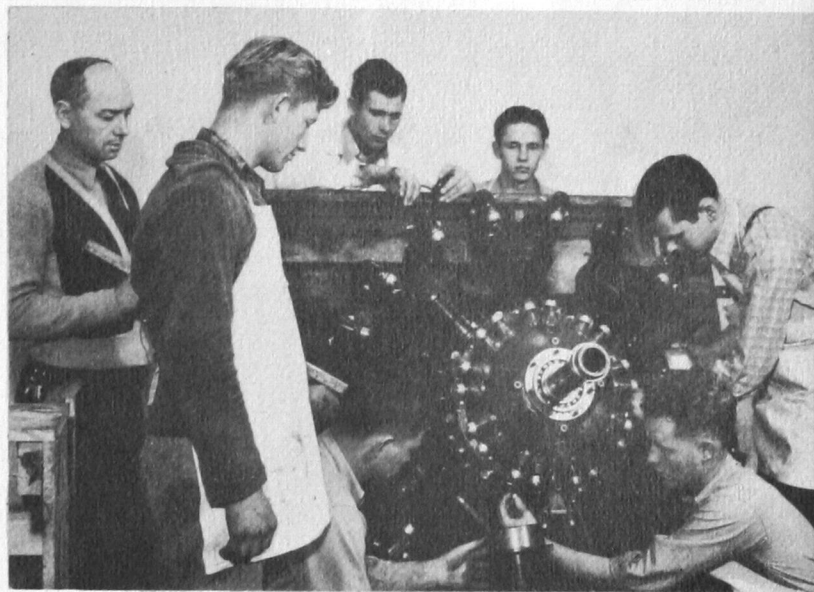
Left to Right: Vance Comer, Otto Atkins, Loy J. Ferguson, Hal Noble, Bob Templeton.

Learning to Serve

IN LINE with the nation's new defense program, strong for America and concerned for her defense, Southwestern is training a good number of her citizenry in welding, wing construction and airplane motors. From this department, serious, well trained young men are supplying the huge demand for skilled workers, earning good salaries and serving their country.



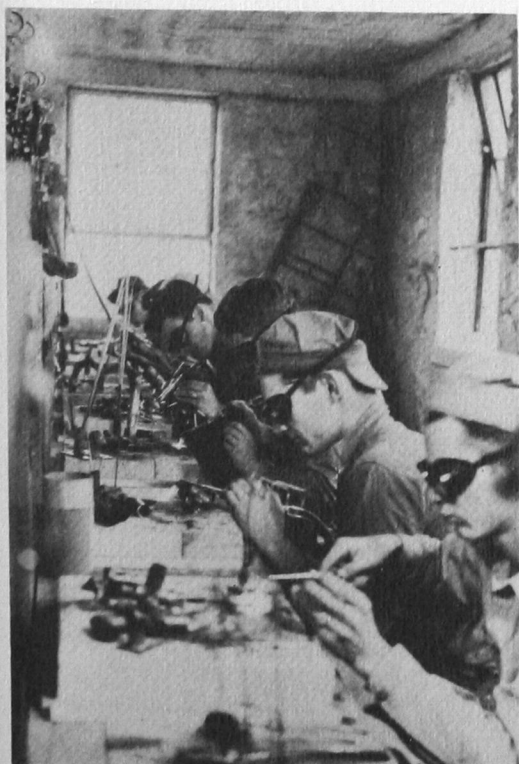
Carburetion—Heart of the Motor



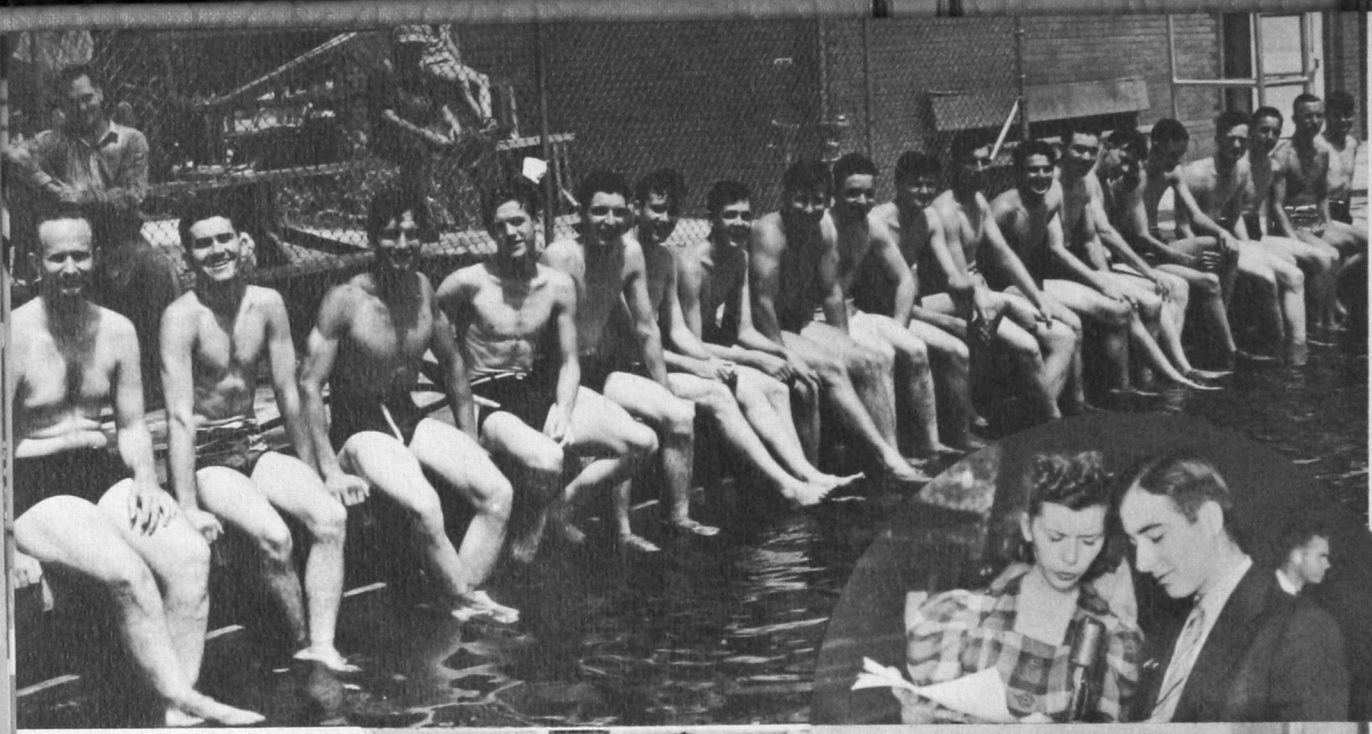
Learning What Makes It Tick



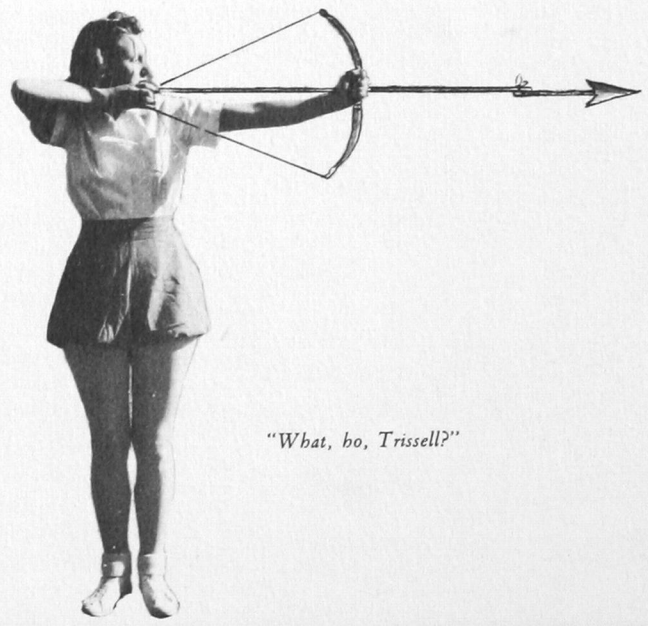
From Blueprint to Actuality



Putting Two and Two Together

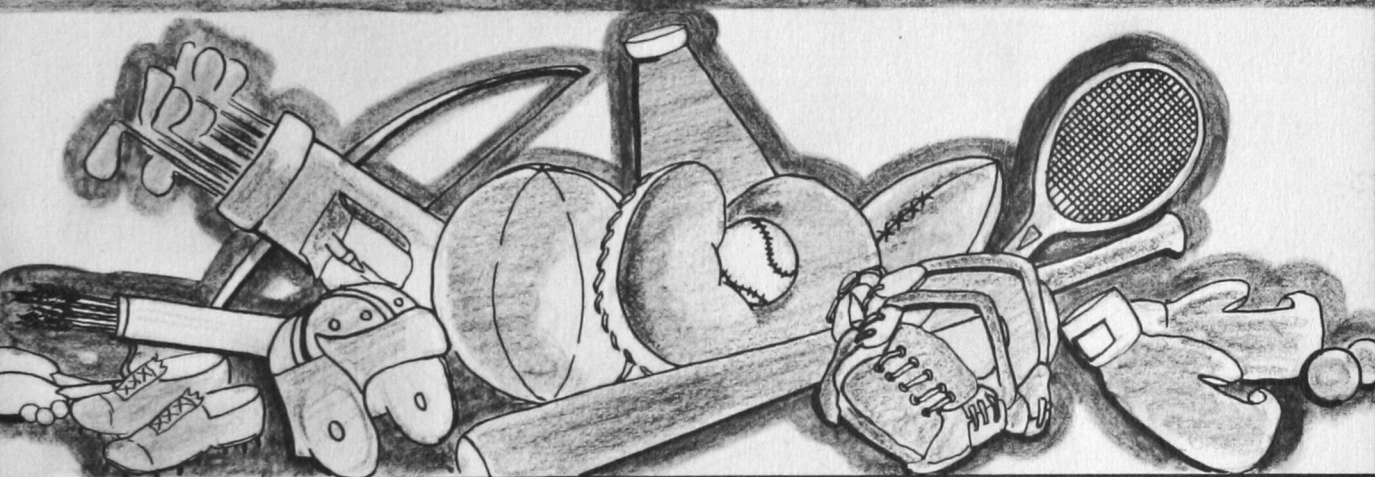


Activities are many and diversified at Southwestern Tech! A happy blend of work and play make life on this campus an enjoyable and profitable experience.

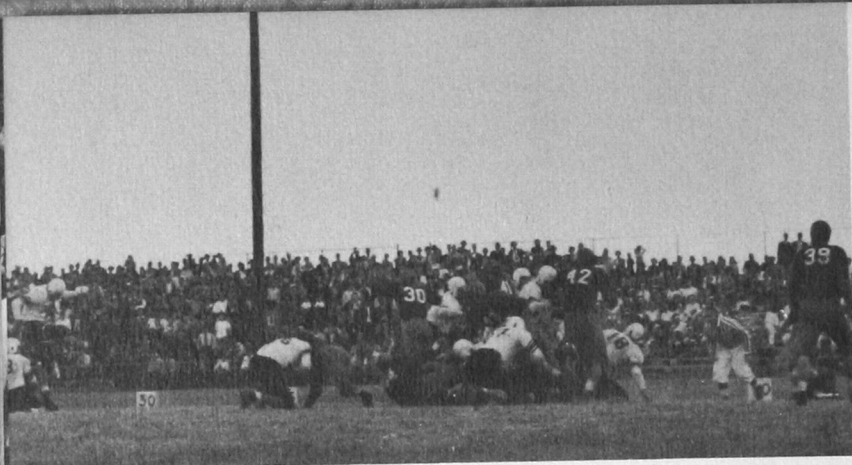


"What, ho, Trissell?"

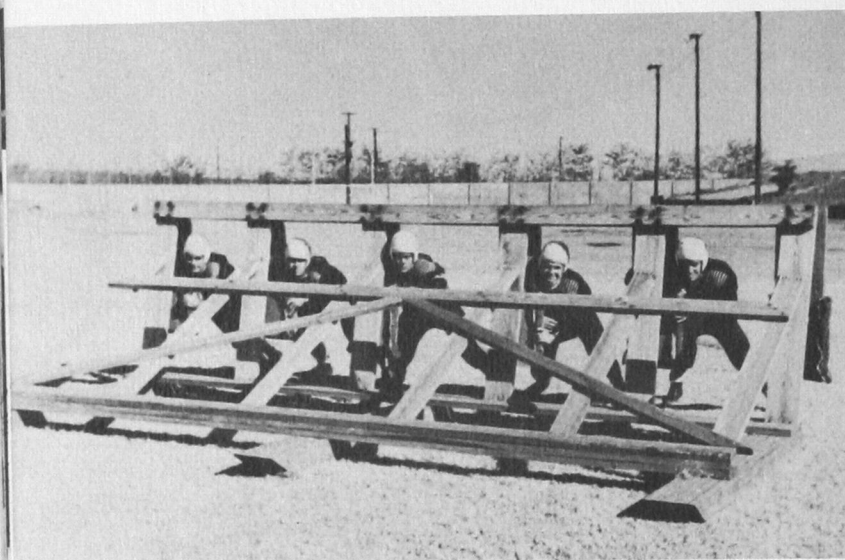




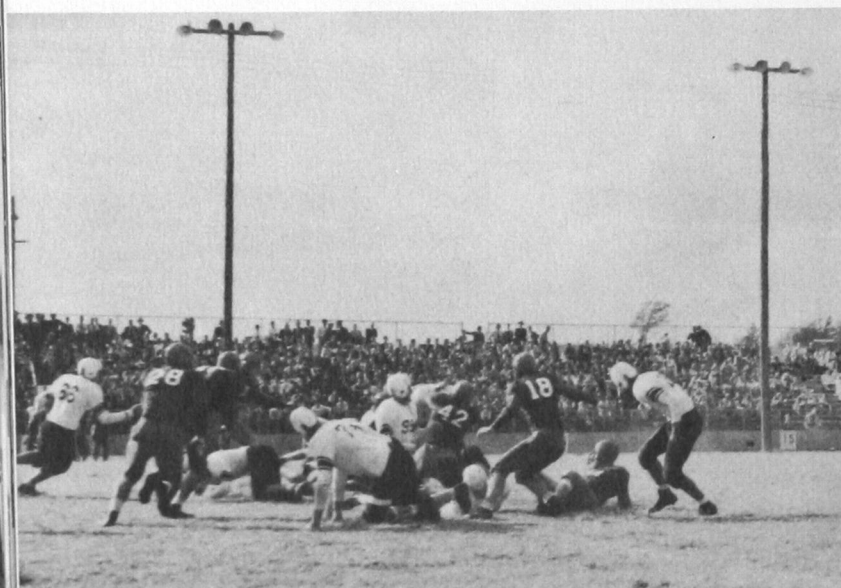
★ ATHLETICS ★



Trying for that extra point against East Central.



Five Mule Team

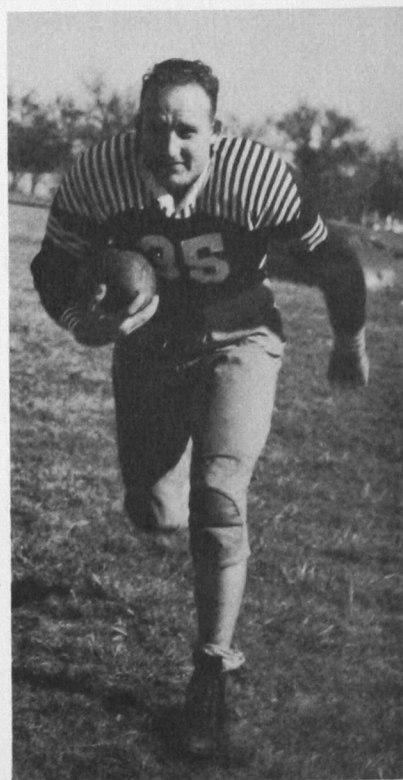


A Bulldog Plows the Line for a Gain



Jake Spann

Jake Spann is a coach who is well liked by his players. This fact and the fact that he teaches good sportsmanship and the value of team cooperation, are probably the reasons for his ever increasing success as a coach.



England, Back and End



Coach Jake Spann



Captain Mose Sims



Assistant Coach "Cotton" Vickers

1940 Bulldog Squad

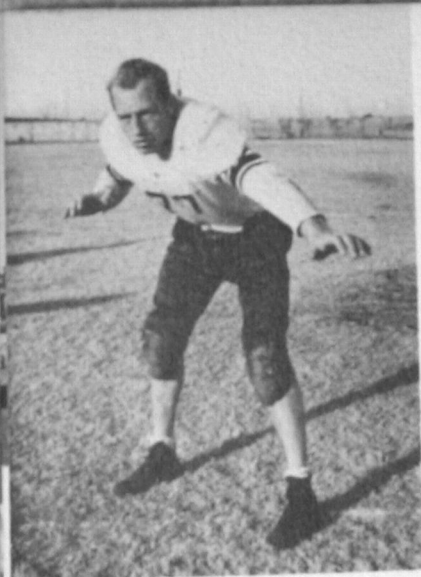
Standing: Assistant Coach Vickers, Myers, Sims, Jarrell, Rhodes, Haskew, Woodard, Coach Spann.

Second Row: Graham, Cox, Tillman, Meece, Baker, Hand, Hartman.

Front Row: Burger, Gromer, Royal, Prock, Duvall, Thompson, Springer, Berry.

Not in picture: Gunter, Waldrop, England, Cluck.





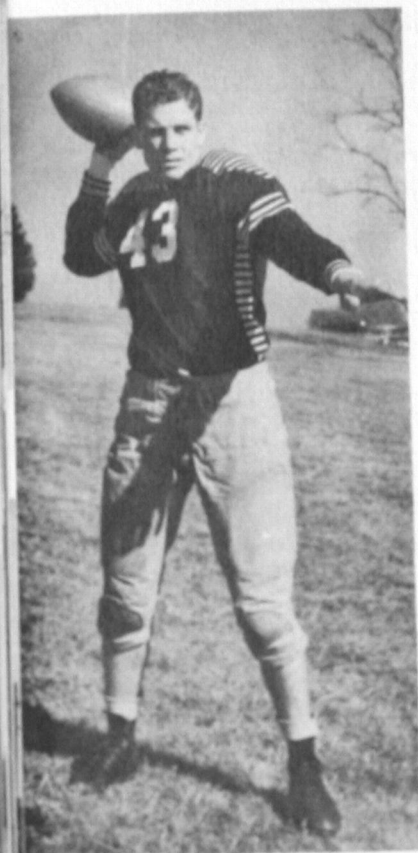
Selected for the second successive year for all state collegiate honors, popular "Mose" Sims bids "adieu" to the old Alma Mater and goes out to play the great game of life. Good luck, "Mose"!



Pete Tillman enjoys the distinction of being the only freshman in Oklahoma to be selected on the all state collegiate football aggregation. He made the second team.



For outstanding play, scrappy Leroy Duvall was this year selected for the all state second team. Much is expected of Leroy next year and, according to his backers, this smiling sophomore will come through in grand style.



Hartman, Captain 1941

Selected unanimously to captain the 1941 Bulldogs, Ralph Hartman, versatile back from Snyder, is expected next year to spark plug the team to even greater heights than the successful 1940 season.



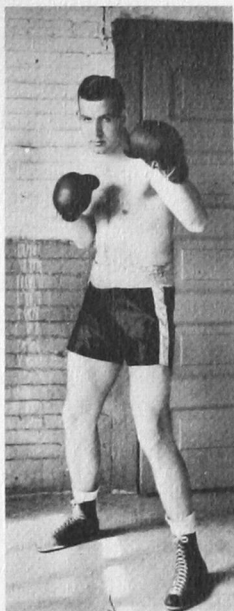
Eleven Bulldogs Ready for Battle



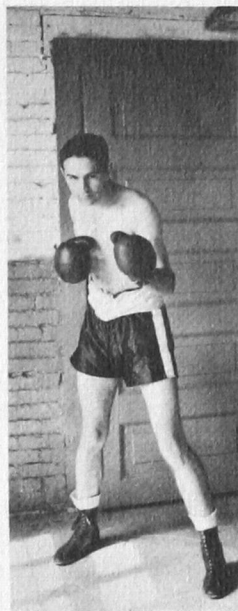
BOXING



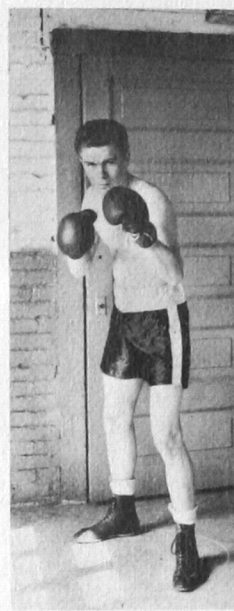
*One champion to another—
Mack Jackson and Sanders Cox.*



Baxter Jarrell



Vernon Carter



Ben Evans



Marilyn Rose Boren



Melba Wilburn



Rosemary Leon



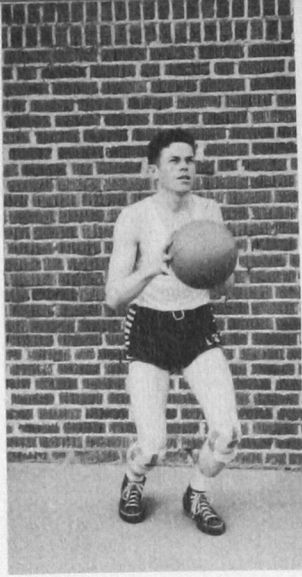
Paul Carpenter

STAR SALESMEN

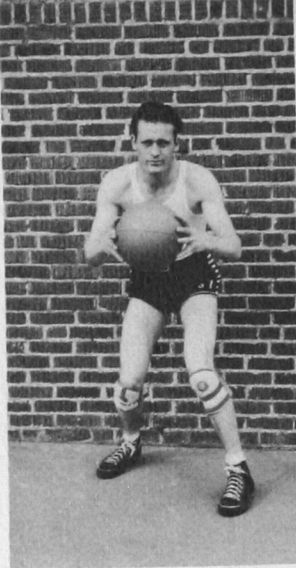
The annual staff wishes to acknowledge its indebtedness to the above students for their fine work in selling this annual. They did their jobs well.



Roy Dillabuntz



Claude Curtis



Clifford Thomason



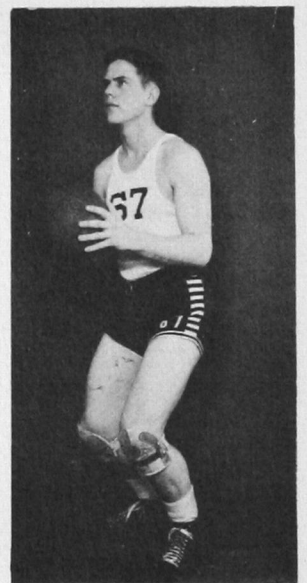
Zearl Harmon

Looking Back...!

THE SOUTHWESTERN basketball season was initiated by a green but hustling group of boys. Only two of the new cagers had ever earned a letter in college basketball, but what they lacked in experience and finesse, they more than compensated with fire and spirit.

The squad, led by rangy Captain "Trap" Rhodes and Co-Captain "Candy" Robertson, spark plugged the squad to 604 points to the oppositions 680. Though the score sheet indicates losses overshadowing the win column for the 1941 season, the boys always held the conference leaders to a very close score.

In March Coach Rankin Williams took a picked squad to Denver for the National A. A. U. Invitation Tournament, upholding a tradition of 23 years standing. Our group held the distinction of representing the institution with the longest straight record of attendance at the meet.



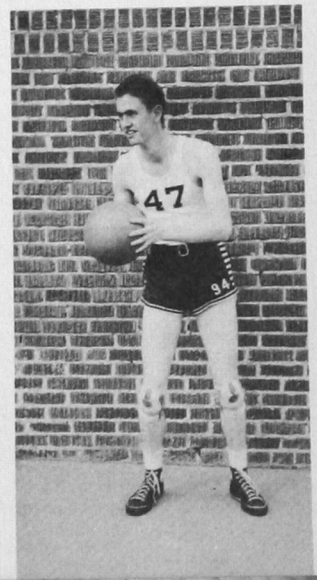
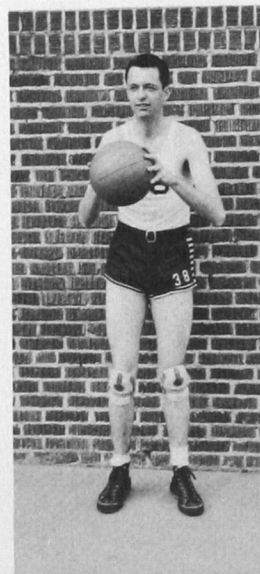
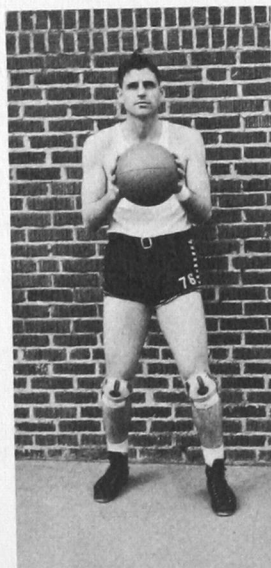
Ervin Robertson, Co-Captain

Hershel Salyer

Travis Rhodes, Captain

Curtis Hollingsworth

Kenneth Martin





Clyde Fleenor



Wesley Jones



Steve Graham

BASKETBALL

Rankin Williams, Coach

19



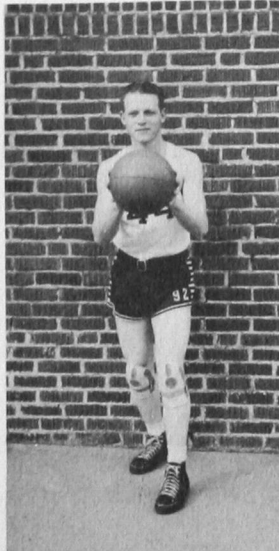
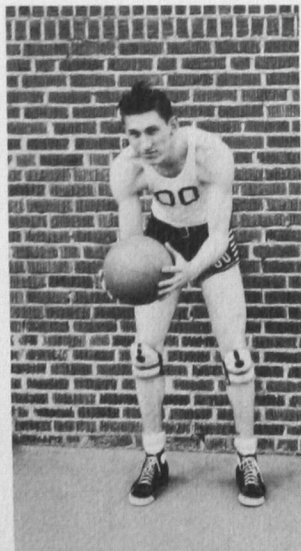
41

Harold Springer

Garland Trim

George Stack

Marion Mallory





RANDOLPH, third base



EMERY, Pitcher



HOLLINGSWORTH, pitcher



SHOTTS, pitcher



HARTMAN, shortstop

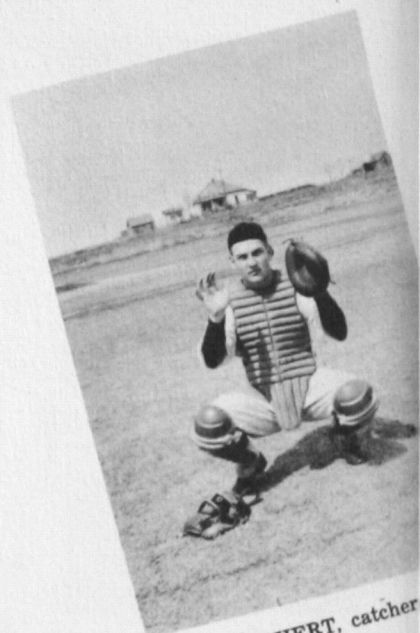
1940 RESULTS

CONFERENCE GAMES

Southwestern	12,	Central	4
Southwestern	12,	Central	2
Southwestern	22,	Phillips	5
Southwestern	6,	Phillips	2

NON-CONFERENCE GAMES

Southwestern	5,	Amarillo	2
Southwestern	5,	Amarillo	7
Southwestern	3,	Aggies	7
Southwestern	14,	Aggies	13
Southwestern	1,	Aggies	10
Southwestern	2,	Aggies	7



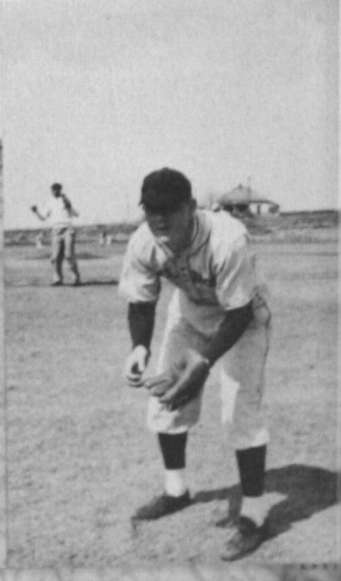
RICHERT, catcher

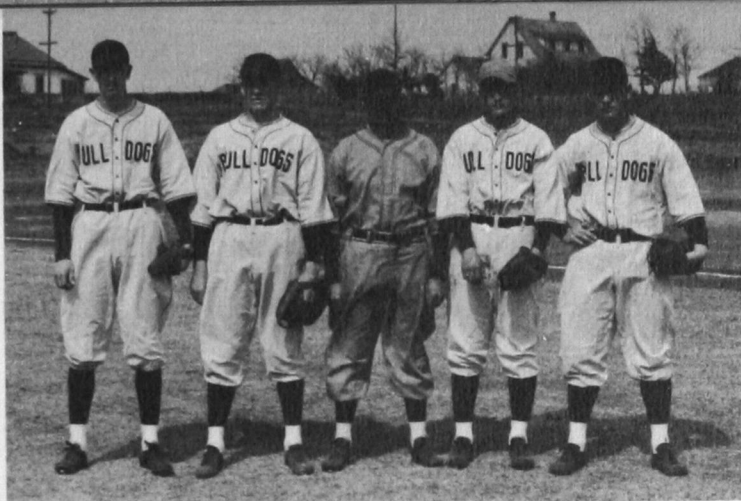
HEIDEBRECHT, first base

DUVALL, first base

DILLAHUNTY, pitcher

STACK, field





Martin, Hartman, Coach Williams, Engle, Richert.

Oklahoma State Collegiate Champs

Roster

LOWER PICTURE, STANDING: Assistant coach Vickers, Campbell, Hartman, Martin, Dillahunty, Banks, Bullington, Hollingsworth, Shotts, Heidebrecht, Coach Rankin Williams.

KNEELING: Baker, Stack, Emery, Duvall, Richert, Engle, Randolph, Salyer.



KENNETH MARTIN, second base



PETE ENGLE, center field

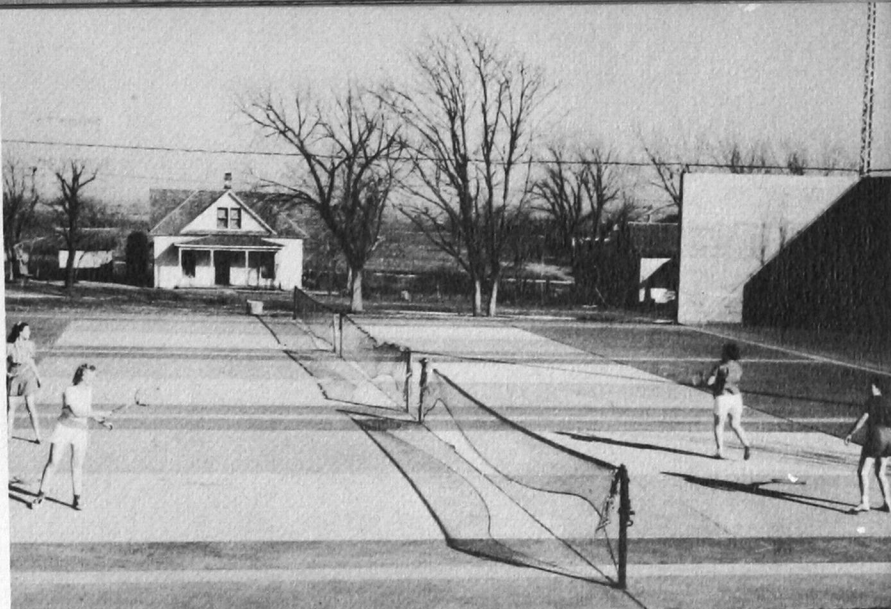


Women's Athletic Association

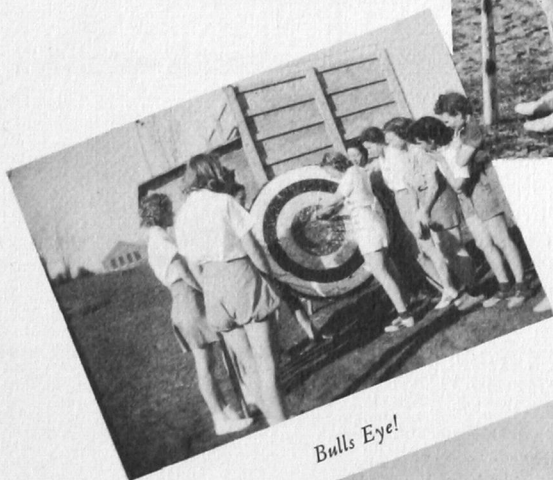
THE WOMEN'S Athletic Association was formed to promote health and sportsmanship among the women of our institution. Archery, soft ball, tennis and swimming are among the many sports in which the woman student may participate. Regular classes in the gymnasium are conducted during the winter months and outdoor classes during the spring and summer months. Intra-mural contests are also in the program for the student and fine, clean competition and friendly rivalry is engaged in with enthusiasm and spirit.



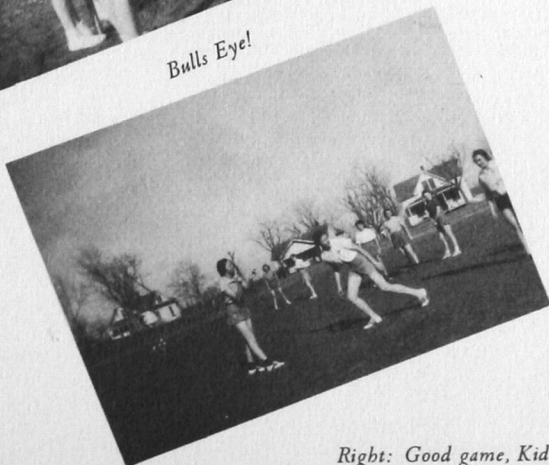
A Doubles Match



Our Archers



Bulls Eye!

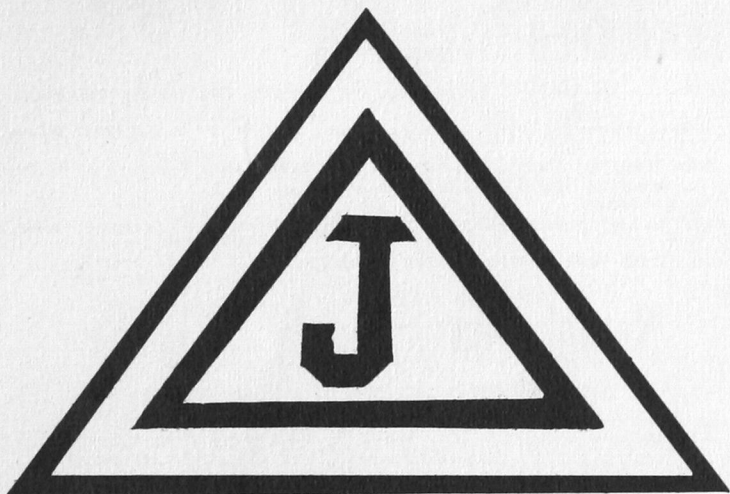


Right: Good game, Kid.





★ ORGANIZATIONS ★



TRI - J

OFFICERS

Sponsor (Top) MISS VERLE JONES
 President (Left above) MAXINE CARR
 Vice-President (Center above) ESTHER HALL
 Secretary (Right above) ELWANDA KEAS

Row One (down and across to left): Vernelle Crelia, Jeanette Harris, Helen Hunt, Wanda Monroe, Ruth Austin, Harriet Loewen, Virginia Parker, Imogene McPhetridge, Margaret Slaten, Iris Savage, Eleanor Bradshaw, Jerry Stroud, Eleanor Chaney, Kathryn Adams.

Row Two (Down and across to left): Margaret Williams, Jessie Todd, Pattie Steward, Ruth Black, Doris Austin, Frances Tracy, Betty Lou Parker, Ina Mae Rusk, Dorothy Holden, Ruth Wright, Lula Mae Self, Sue Anna Shofstall, Marjorie Wheeler, Marguerite Deming, Mary Virginia Cooper, Doris Wright.





Southwestern Symphony

Back Row: Roscoe LePew, Double Bass; Tom Stanton, 1st Trumpet; Harvey Day, 2nd Trumpet; Jake Wright, 2nd Horn; Fred Moeller, 1st Horn; Dick Williford, Tympani.

First Row (left): J. R. Willowby, 2nd Violin; Wayne Weese, 2nd Violin; Honor Howard, 2nd Violin; Mrs. Lillian Milam, 2nd Violin.

Second Row (left): Dorothy Grounds, Viola; Helen Hunt, 1st Violin; Daniel Ediger, 1st Violin; James Falconer, 1st Violin.

Third Row (left): Janet Redden, Cello; Wanna Lee Roach, 1st Violin; Archie Espolt, 1st Violin.

Center: Gerald Williams, Bassoon; Leland Procter, Conductor.

First Row (right): Robert Parsons, 3rd Trombone; Leonard Hughes, 2nd Trombone; Herbert Chisum, 1st Trombone; Billie Jean Howard, Tenor Saxophone.

Second Row (right): Mary Alice Russel, Clarinet; Keith Wright, Oboe; Marjorie Asher, Flute.

Symphonia

OFFICERS

Sponsor	LELAND PROCTER
Sponsor	MRS. EDITH DAVIS
Sponsor	MRS. LILLIAN MILAM
President	JOYCE BRUCE
Secretary-Treasurer	MARTHA WARKENTIN

First Row: Harvey Day, Tom Stanton, Marjorie Asher, Georgia Barr, Betty Milligan, Rosemary Straub, Jim Falconer, Helen Hunt.

Second Row: Leland Procter, Mrs. Edith Davis, Geraldine Howard, Jene Powell, Joyce Bruce, Martha Warkentin, Mrs. Lillian Milam, Robert Templeton, Fred Moeller.

Third Row: Jane Lee Hall, Nelia Belle Templeton, Beatrice Kelly, Bonnie Mae Hayden, Lennis McMillan, Blondell Schmidt, Eleanor Covington, Kathryn Kruel, Vesta Bachman, Elsie Barnes, Eileen Hoyt, Elizabeth Ann Rudder, Mary Virginia Cooper, Flossie Lee, Luvern Widney.

Fourth Row: Pattie Post, Mary Van Gundy, Inez Leach, Priscilla Smith, Kathryn Adams, Grace Templeton, Sharon Harris, Lorraine Wright, Wanna Roach, Honor Howard, Janet Redden, Kathleen McLaughlin.

Fifth Row: Wayne Weese, Coy Sims, Mary Ruth McCulley, Gayle Carpenter, Frank See, Herbert Chisum, Byron Wolfe, Doris Swanson, Roscoe LePew, Paul Carpenter, Helen Wilson, Keith Wright, J. R. Willowby, Gerald Williams, Paul Venable.





SOUTHWESTERN BAND

FLUTES:

Thompson, Dorothy
Post, Pattie
Asher, Marjorie
Meeks, Mary

OBOE:

Randall, Mary Alice
Wright, Keith

BASSOON:

Williams, Gerald
Conrad, Robert Dean

CLARINETTS:

Rice, Clayton
Boaz, J. Seth
Dyer, Wayne Lee
Espolt, Archie
Hink, Lynn
Mills, Cecil
Straub, Rosemary
Hunt, Helen
Wyett, Lorena
Howard, Geraldine
Case, Julian
McCracken, Walter
McNaught, Dorthea
Pease, Francis
Smith, Frank
Hamilton, Ed

ALTO SAXOPHONE:

Monroe, Wanda
Wright, Lorraine
Cooper, Maurice
Sills, Vivian

TENOR SAXOPHONE:

Howard, Billie Jean

BARITONE SAXOPHONE:

DeVerse, Raymond

CORNETS:

Moeller, Frederick
Hill, Ed
Stanton, Tom
Smith, Marya Jo
Allen, Warren
Randall, Bill
Howard, Carol Faye
Day, Harvey
Clark, Charles

TRUMPETS:

Paxton, Joyce
Weems, Weston
Carpenter, Paul

HORNS:

Hiatt, Don
Wright, Jake
Hare, Robert
Kendall, Almarie
Powell, Barbara Jene
Heatley, Katherine

TROMBONES:

Chisum, Herbert
Bell, Bill
Williams, Vernon
Hall, Jane Lee
Kaiser, Ethel
Cearley, Wilbur
Venable, Paul
Jamison, Harold
Hink, Harry
Francis, Wendell
Melling, Dale
Parsons, Robert

BARITONES:

Hughes, Leonard
Redden, Janet
Gray, Robert
Hughes, Bill
Wright, Glenn
Wagoner, Harvey

BASSES:

LePheuw, Roscoe
Wilson, Charles
Falconer, Jim
Edmonson, Franklin
Allen, Deryle
Jones, G. E.

TYMPANI:

Williford, Dick

BASS DRUM:

Roach, Wanna Lee

CYMBALS:

Barr, Georgia

SNARE DRUMS:

Boaz, Betty Jo
Hart, Allwyn
Cronkhite, John
Kern, Elgin
Dodson, Ruth

BATON TWIRLERS:

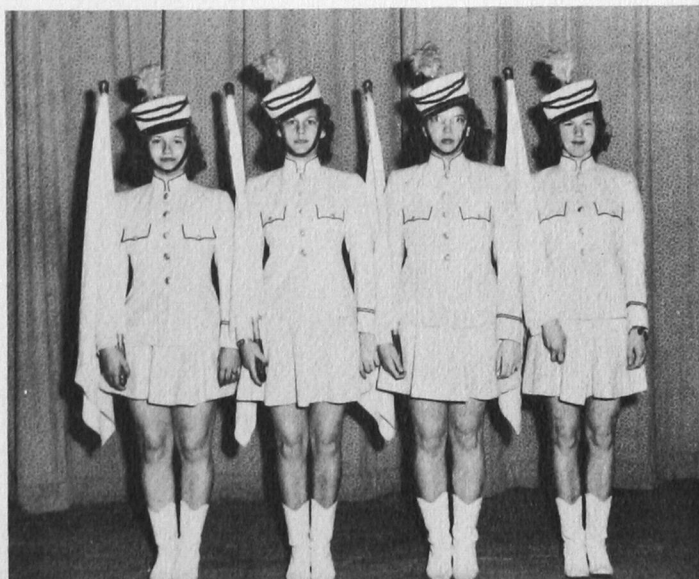
Case, Julian
LaRue, Lois

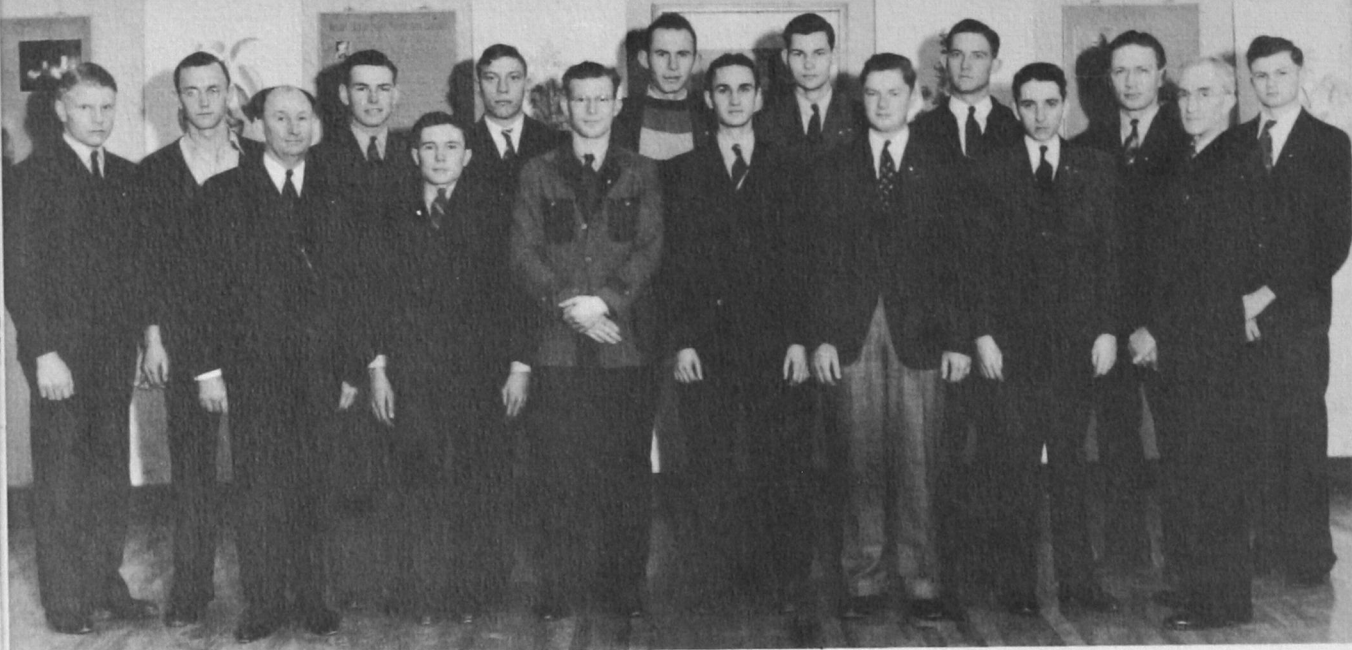
DRUM MAJOR:

Vinson, LeRoy

Swiss Flag Twirlers

ADDING beauty and color to the Southwestern Band, these skillful flag twirlers provoke wonder and admiration wherever they go. They are, left to right: Betty Milligan, Betty Jo Boaz, Mary Alice Randall, and Patty Stewart.





Senate

OFFICERS

President	ED C. NIKKEL
Vice-president	BYRON WOLFE
Secretary-treasurer	DON EATON
Parliamentarian	PROF. J. R. PRATT
Sergeant-at-arms	FRANS HAMMONS
Critic	PROF. A. C. GUFFY

Left to Right: Ralph Kelting, Leonard Ratzlaff, Prof. J. R. Pratt, Byron Wolfe, Hubert Chitty, Leonard Reimer, J. R. Willowby, Abe Peters, Paul Ratzlaff, G. W. Morris, Don Eaton, George Hill, Frans Hammons, Ed C. Nikkel, Prof. A. C. Guffy, Arthur Wiebe.

Bulls

OFFICERS

President	ED C. NIKKEL
Vice-president	J. R. WILLOWBY
Yell Leader	G. Y. FAILS
Sponsor	DON EMERY

Front Row: Cecil Shepherd, Don Emery, Pete Engle, Frank Polk, Marvin Rotan, Edgar Imboden, J. R. Willowby, A. W. Fowler, Hubert Chitty.

Back Row: Howland Goodwin, Ted Streun, Robert Wiens, Frank Nikkel, Yale Sadler, Orbie Ashby, Allen Siemens, Ed C. Nikkel, L. J. Ferguson, G. Y. Fails.





Bull Pups

OFFICERS

President	KATHERINE STAVROS
Secretary-Treasurer	MARGUERITE DEMING
Reporter	LULA MAE SELF
Yell Leaders	ROSEMARY LEON AND BELVA NEALE MILLER
Sponsor	MYRLE KELLY

Rear Row: Dorothy Kelly, Reba Nell Odom, Eileen Kesterson, Hazel Cox, Leota Delk, Mary Lillian Hefner, Leona Delk, Doris Wylie, Doris Stockwell, Lorraine Wright, Evelyn Self, Doris Jennings, Ruth Black, Marguerite Deming.

Third Row: Ila Pearl Ayres, Eva Boomer, Nina Rodriguez, Bonnie Jean Doran, Nellie McCool, Ruby Trissell, Marguerite Parker, Katherine Bradley, Nina Harris, Marie Hogg, Mary Foley.

Second Row: Lora Lee Miller, Pat Van Pelt, Virginia Leonard, Peggy Caswell, Lula Mae Self, Peggy Burch, Mildred Jones, Miss Myrle Kelly.

Front Row: Katherine Stavros, Vallie Russell, Bonnie Hayden, Joyce Bruce, Rosemary Leon, Belva Neale Miller, Iris Savage, Kathryn Adams, Bettie Thomas, Sue Anna Shofstall.

Palette and Brush Club

OFFICERS

President	BEATRICE SMITH
Vice-president	LENA GINGRICH
Second Vice-president	MYRA HUNT
Sergeant-at-arms	JEANETTE HARRIS
Secretary-Treasurer	JANE LEE HALL
Sponsor	MYRLE KELLY

Rear Row: Jerry Stroud, Thelma Larison, Juanda Pennington, Katherine Adams, Dorothy Royal, Mary Nokes, Lee Ellen Ford.

Second Row: Lennis McMillian, Iris Savage, Virginia Parker, Pauline Fleming, Ethel Carothers, Jeanette Harris, Jane Lee Hall, Reba Nell Odom, Beatrice Kelly.

Seated: Miss Myrle Kelly, Lena Gingrich, Norma Lee Hathaway, Beatrice Smith, Eloise Hamburger, Wanda Monroe.

Front Row: Deola Gray, Lina Terry, Myra Hunt, Olene Lee, Wynola Walker.





W. A. A.

OFFICERS

President _____ BOBBY McDANIEL
 Secretary-Treasurer _____ FERNE O'NEAL

Seated: Bobby McDaniel, president, Melba Wilburn, Ferne O'Neal, secretary-treasurer, Doris Wylie, Rubye Morris, Lorraine Wright.
Second Row: Katie Ruth Brice, Katherine Bradley, Elsie Barnes, Nellie Rose McCool, Marcella Ray, Ruby Trissell, Claudine Saunders, Jene Powell, Louise Lovejoy.
Third Row: Juanita Parker, Katy Baxter, Sammie Woodard, Armetta Bond, Bertie Meece, Maurice Cooper, Gladys Bradford, Oneta Garvin, Marguerite Parker, Muriel Holleman.

Kitawasa

Seated: Maurine Avant, Eva Boomer, Lennis McMillan, Laverne Harris.
Middle Row: Deola Gray, Grace Hooper, Genevieve McRae, Millie Alexander, sponsor, Virginia Leonard, Blondell Schmidt, Lockey Davis.
Back Row: Doris Austin, Avis Griggs, Viola Castleberry, Mabel King, Eva Mae Mosteller.





Q. P.

OFFICERS

President	MARGIE COOKE
Vice-president	GUY EWING
Secretary-treasurer	LENA GINGRICH
Reporter	OLENE LEE
Sergeant-at-arms	T. W. McCOWN
Keeper of Scrapbook	BETTIE THOMAS

Back Row: Mary Jane Driskill, Melba Wilburn, Maurice Cooper, Bill Dougherty, Lena Gingrich, Ernest Lewis, Betty Jo Weber.

Front Row: Bettie Thomas, Wanda Monroe, Joe Woodruff, Hazel Cox, Ernest Davenport, Iris Savage, Guy Ewing, Margie Cooke.



ELSIE SHOEMAKER
Sponsor

Alpha Psi Omega

Bettie Thomas, Guy Ewing, and Lena Gingrich.





Youth Council

OFFICERS

President	ARMETTA BOND
Vice-President	JUANITA LIKES
Secretary-Treasurer	ROVERTA BARKER
Parliamentarian	LORETTA CLIFFT
Song Leader	NORMA LEE HATHAWAY
Program Committee Chairman	BERNICE ATCHLEY
Social Committee Chairman	KATY BAXTER

Front Row: Eunice Tibbles, Loretta Clift, Lorene Simmons, Kathryn Simpson, Aleen McDaniels, Aline Jones, Muriel Holleman, Margaret Minton.

Third Row: Imogene Chambers, Gladys Beets, Katie Brice, Louise Lovejoy, Jean Mitchell, Charlene Nobles.

Second Row: Norma Lee Hathaway, Bernice Atchley, Katy Baxter, Juanita Likes, Roverta Barker, Armetta Bond.

First Row: Billye Higgins, Bonnye Cotney, Alene DeVore, Bennie Faye Hix, Naomi Stewart, Oleta Waldrop, and Elberta Whitfield.

Forensia

OFFICERS

Sponsor	MRS. DICK JEWELL
President	DORIS LOWRY
Secretary-Treasurer	FAYE DOYEL
Sergeant-at-Arms	BOBBY McDANIEL

First Row (sitting): Doris Stockwell, M. A. Randle, Nina Rodrigues, Marguerite Deming, Betty Joyce Bruce, Mrs. Jewell.

Second Row (standing): Jerry Howard, Faye Doyel, Grace Hooper, Lucille Ward, Honor Howard, Mary Van Gundy, Doris Lowry, Theda Gregg, Marjorie Wheeler, Maurice Cooper, Bobby McDaniel, Freda O'Neal, Ferne O'Neal, Joyce Paxton, Rosemary Leon, Imogene McPhetridge.





International Relations Club

OFFICERS

President	DAVID BERRY
Secretary	VERNA REIMER
Librarian	ELSIE BARNES
Sponsor	DR. DORA ANN STEWART

Seated: David Berry, Iris Savage, Verna Reimer, Elsie Barnes, Jeanne Powell, Dr. Stewart.

Standing: A. W. Fowler, Lee Ellen Ford, Pauline Fleming, Don Rust, Paul Carpenter, Juanda Pennington, Jim Burnham, Wynola Walker, G. Y. Fails.

Alpha Phi Sigma

Front Row: Annabelle Zimmerman, Mattie Crum, Geraldine Howard, Mr. Melba Alcorn, Oneta Garvin, Minnie Ruth Bragg.

Middle Row: Mary Lillian Hefner, Allora Tabor, Vivian Hefner, Ruth Dudek, June Lee Hall, Joy Shockley, Elsie Barnes.

Standing: Juanita Parker, Armetta Bond, Maxine Newby, Jessie Fowler, Lydia Foote, Sammie Woodard, Dorothy Royal, Honor Howard, J. R. Willowby, Loeta Allen, David Berry, Lucille Ward, Katherine Adams, Beatrice Smith, Avis Griggs, Verna Reimer, Faye Doyel, Georgia Anderson, Ray Schlichting, G. Y. Fails.





Delta Sigma Epsilon

OFFICERS

President	ELEANOR COVINGTON
Vice-President	KATHRYN KRUEL
Secretary	ROSEMARY LEON
Treasurer	RUBY TRISSELL
Pledge Treasurer	BELVA NEALE MILLER
Pledge Captain	BETTY JO MILLIGAN
Sergeant-at-Arms	HONOR HOWARD

Front Row: Patricia Van Pelt, Eleanor Covington, Kathryn Krue, Honor Howard, Marcella Ray.
 Back Row: Janet Harding Redden, Betty Jo Milligan, Rosemary Straub, Lorraine Wright, Pattie Post, Virginia Leonard, Peggy Caswell, Juanita Muse, Marjorie Asher, Jean Sharp, Georgia Barr, Aliene Sharp.
 Those Absent: Rosemary Leon, Ruby Trissell, Belva Neale Miller, Ruth Heath, Margie Hicks, Norma Jean Lamb, Joyce Paxton.

Hammacian Club

OFFICERS

President	LOLA RUST
Vice-President	BETTY JO WEBER
Secretary	LOIS CUPP
Treasurer	FERNE O'NEAL
Sergeant-at-Arms	DORIS STOCKWELL

Seated: Betty Jo Weber, Lola Rust, Lois Cupp, Ferne O'Neal, Doris Stockwell.
 Second Row (standing): Maxine Likes, Mrs. Willie Martin, Vellon June Bock, Dorothy Mae Barker, Freda O'Neal, Lorry Doris Davis, Ruth Dudek, Zeffa Pyron.





Student Council

FIRST SEMESTER

Seated: Gay Moore, Chairman of Courtesy and Morale Committee; Lucille Ward, Junior Representative—Member of Courtesy and Morale Committee; Bill Dougherty, Junior Representative—Member of Program Committee; Patricia Wygle, Secretary and Treasurer; Orla Goff, President; J. R. Willowby, Vice-president; Geraldine Howard, Senior Representative—Member of the Courtesy and Morale Committee; Eleanor Lockstone, Sophomore Representative—Member of the Social Committee; Joe Powell, Freshman Representative—Member of the Publicity Committee.

Standing: C. T. Eskew, Sponsor; Faye Doyel, Chairman—Program Committee; Jimmy Payne, Senior Representative—Member of the Program Committee; Jakey Wright, Sophomore Representative—Member of the Social Committee; Ernest Davenport, Freshman Representative—Member of the Publicity Committee.

SECOND SEMESTER

Standing: Alfred Jones, Publicity committee—Freshman; Paul Venable, Publicity Committee—Sophomore; Ralph Kelting, Courtesy and Morale Committee—Junior; Byron Wolfe, Social Committee—Freshman; Mose Sims, Courtesy and Morale Committee Chairman—Senior Excuse Committee; Don Rust Program Committee—Senior; Pattie Post, Program Committee—Sophomore; Mr. C. T. Eskew, Faculty Sponsor; Jim Burnham, Publicity Committee Chairman—Junior; Elgin Kern, Program Committee Chairman—Sophomore.

Seated: Iris Savage, Social Committee—Junior; Faye Doyel, Courtesy and Morale Committee, Secretary-treasurer, Excuse Committee—Senior; Bill Dougherty, President—Junior; Colin Alford, Vice-president, Chairman of Excuse Committee—Senior; Rosemary Leon, Social Committee—Senior.





Baptist Student Union

OFFICERS

President	COY SIMS
1st Vice-President	ALLIE JUNE SELLS
2nd Vice-President	LUCILLE GIBSON
Recording Secretary	LUCILLE WARD
Corresponding Secretary	HELEN WILSON
Pianist	MARY RUTH McCULLEY
Publicity Chairman	KEITH WRIGHT

First Row: Allie June Sells, Paul Carpenter, Mary Ruth McCulley, Lucille Gibson, Coy Sims, Lucille Ward, Helen Wilson, Keith Wright.

Second Row: Mildred Jones, Deola Gray, Vestal Varner, Marcella Ray, Eileen Hoyt, Elsie Barnes, Wayne Weese, Sammie Woodard, Opal Pigg, Wynola Walker, Jene Powell.

Third Row: Edith Patterson, Kathryn Clark, Gayle Carpenter, Thelma Kerbo, Victor Wallis, Jerry Howard, Ila Jo Knox, Deryle Allen, Catherine Simmons, Rose Anna Blackburn.

Fourth Row: Paul Venable, Abe Peters, Frank Nikkel, Ed Nikkel.

Y. M. ~ Y. W.

OFFICERS

Sponsor	EARL HAMBURGER
Sponsor	MRS. CHARLES ADDISON
President	G. W. MORRIS
Vice-President	DON RUST
Secretary	MARY VAN GUNDY

Bottom Row: Euteva Moore, Ruth Dudek, Wayne Melton, Mary Flynn, Glen Stout.

Second Row: Earl Hamburger, Mary Van Gundy, G. W. Morris, Donald Rust, Thelma Larison.

Top Row: Flossie Williams, Edith Eller, Dortha Mae Barker, Priscilla Smith, Vellon June Bock, Myrtle Rose, Margaret Stidham, Ray Brothers, Jewel Wilcoxon, Marjorie Krieger, Luvern Widney, Wayne Weese, Pauline Masonhall, Fred Hamburger, Nelia Belle Templeton, J. R. Willowby, Gladys Moss, Lina Terry.





Wesley Foundation Cabinet

OFFICERS

Sponsor _____ DR. McCORMICK
 President _____ DONALD RUST
 Secretary _____ THELMA LARISON

Front to Back—(left to right): Dr. McCormick, Nelia Belle Templeton, Donald Rust, Thelma Larison, Mary Van Gundy, Jane Lee Hall, J. R. Willowby, Pauline Masonhall, Glenn Shelton, Ruth Dudek, G. W. Morris, Wayne Melton, Glen Stout, Mary Flynn.

Wesley Players

OFFICERS

Sponsor _____ DR. McCORMICK
 President _____ J. R. WILLOWBY
 Vice-President _____ THELMA LARISON
 Secretary _____ MARY VAN GUNDY

Seated: Dr. McCormick, Margaret Stidham, Juanita Muse, Luvern Widney, Nelia Belle Templeton, Blondell Schmidt.

Front Row (Standing): J. R. Willowby, Mabel Hanni, Eleanor Covington, Grace Templeton, Pauline Masonhall, Wayne Melton, Mary Van Gundy, Rowena Whisenant, Jene Powell.

Back Row (Standing): Glenn Shelton, Miriam Miner, Marjorie Kreiger, Bob Templeton, Anna Mae Moad, Ray Brothers, G. W. Morris, Ione Green, Mary Nokes, Loeta Allen, Juanita Likes.





Debate

Left to Right: Evelyn Self, G. W. Morris, T. W. McCown, Donald Rust, Ernest Davenport, Verna Reimer.

Pharmacy

OFFICERS

President	LYNN HENLEY
Vice-President	RUTH WRIGHT
Secretary	BETTY MILLIGAN
Treasurer	EDDIE SMITH
Sergeant-at-Arms	BILL CONLEY

First Row: Bill Conley, Daniel Rivkin, Eddie Smith, Lynn Henley, Betty Milligan, Dick Williford, Colin Alford.

Second Row: L. B. Herring, Bob Senior, Tom Kunkler, Delma Jane Alling, Wanda Lovelace, Rosemary Straub, Bob Parsons, Kenneth Fanning, Ed Hamilton, Dick Christy.

Third Row: Fred Byrd, Conrad Kenner, Raymond Yeargan, Floyd Birden, Paul Huffman, Frank Smith, Raymond Daugherty, Robert McCroskie, Frank Fransen.





Kappa Delta Chi

OFFICERS

President	ELLEN JORDAN
Vice-President	MABEL KING
Secretary	GLAIDA DEE ARNOLD
Treasurer	JEAN MITCHELL

Back Row: Frances Kendall, Pearl Carothers, Kathleen Baxter, Alline Jones, Ethel Carothers, Muriel Holleman, Kathryn, Simpson, Wanda Nippert, Aleen McDaniel, Edith Marie Carter, Marjorie Krieger, Millie Bannister, Anna McCullough, Lula Mae Taylor, Bertha Lee Taylor.

Second Row: Naomi Stewart, Jean Mitchell, Pauline Masonhall, Glaida Arnold, Ellen Jordan, Doris Stansell, Margaret Bowerman.

Third Row: Roverta Barker, Norma Jean Lamb, Peggy Caswell, Lorieene Skinner, Ethyle Keller, Norva Ogleaby.

Sons of the Legion

OFFICERS

Captain	ELGIN KERN
Adjutant	ERNEST DAVENPORT
First Lieutenant	BILL DOUGHERTY
Second Lieutenant	JIM BURNHAM
Sergeant-at-Arms	LEROY ODEN
Historian	KEITH WRIGHT
Finance Officer	LOWELL ODEN
Chaplain	CLETIS JOHNSON

Sponsors: G. P. Wild, W. E. Phillips.

Standing: Bob Parsons, Leroy Oden, Lowell Oden, Keith Wright, Lynn Hink, Bill Rogers, Jim Burnham, Cletus Johnson.

Seated: Ernest Davenport, Bill Dougherty, Elgin Kern, Posey Wild, Harry Hink.





Mr. and Mrs. SOUTHWESTERN

Continuing a tradition of many years the Forensia club has again selected a bride and groom to symbolize the union of the club and the school. This year the honor was given to Mr. Bill Dougherty and Miss Faye Doyel, popular students of Southwestern.

Mr. Bill Dougherty and Miss Faye Doyel, Mr. and Mrs. Southwestern, 1941.

S Club Personnel

STANDING, left to right: Ervin Robertson, Don Royal, Claude Curtis, Sanders Cox, Curtis Hollingsworth, Baxter Jarrell, Mose Sims, Travis Rhodes, Roy Dillahunt, Pete Engle, Kenneth Martin, LeRoy Duvall, Alvin Hand, Abe Richert.

SEATED: John Haskew, Ralph Hartman, Coach Jake Spann, Dick Moore, Assistant coach Marion Vickers, Guy Ewing, Harold Springer.



Summer Tour 1940



Her maiden trip.



The lucky gang.



At the continental divide.



Which is Scoop?



Mucho bull in the bull ring.



Wading, and below, disembarking.



In an old mission.





Kitawasa

Summer 1940

Sponsors, Miss Millie Alexander and Mrs. Mary Forbes Carmichael

OFFICERS

President _____ MARTHA LEE JOHNSON
 Vice-president _____ LOIS FAYE HAYS
 Secretary-treasurer _____ ALICE MAE FREEMAN

Seated: Goldie Klump, Lois Faye Hays, Mary Edith Forbes, Marjorie Carmichael, Martha Lee Smith, Alice Mae Freeman, Millie Alexander.

Standing: Geraldine McPherson, Juanita Henry, Rosella Harms, Jessie Gillingham, Viola Castleberry, Avis Griggs, Paulene Luck, Genevieve McRae, Olga Hanni.

Palette and Brush Club

Summer 1940

Sponsor, Miss Myrle Kelly

OFFICERS

President _____ MONETT CORBETT
 Vice-president _____ ESTHER WRIGHT COLCLASURE
 Secretary-treasurer _____ LAURETTA WRIGHT PARMAN
 Reporter _____ HAZEL COX

Seated: Lauretta Wright Parman, Hazel Cox, Monett Corbett, Myrle Kelly, Esther Wright Colclasure, Mary Ogburn, Jane Lee Hall.

Standing: Alma Waters, Nell Ruston, Martha Word, Pearl Poole, Wilma Leighton, Ethel Schmidt, Leota Titus, Mildred Engle, Dorothy Highsmith, Anna Von Paxton, Mable Rudd, Mildred Anderson.





Summer Chorus

Directors, Mrs. Edith Davis and Mr. Dell Miser

First Row: Otis Dell Miser, practice teacher; Jane Lee Hall, Bula Bachman, Lorene Groenewold, Nell Watson, Claudia Lindblad, Luvern Widney, Mrs. Edith Frost Davis.

Second Row: Iris Turbyfill, Florence Blair, Gladys O'Neal, Margie Shannon, Ardalene Nease, Joyce Bruce.

Third Row: Eileen Huddleston, Pearl Poole, Lydia Hohmeyer, Helen Wilson, Evelyn Crain, Freda Burch, Rachel Tompkins.

Southwestern Band

Summer 1940

Dick Jewell, Director

First Row: Ersu Kiker, Dorothy Thompson, Leota Rankin, Mary Meek, Mary Alice Randle, Aubrey Walker, Harris Dutcher, Gene Midget, Alvin Wood, Lorene Wyatt, Marion Burgert, Dorothy Hager, Betty Armstrong, Alma Jean Cook, Dick Jewell.

Second Row: Zoie Irion, Darrell Hart, John Henry Barnett, Robert Hair, Goldie Bergen, Mary Gayle Penix, Bill Williams, Charlotte Kaiser, Betty Jean Gwinn, Bernice Mitchell, James H. Boren, Wana Lee Roach, Georgia Barr.

Third Row: Fred Moeller, Jack Trossel, Tom Stanton, Bill Randle, Laverne LeGate, J. C. Watson, Charles Clark, John Kennard Krumtum, Junior Bruten, Mary Jane Spratt, Betty Boaz.

Fourth Row: Don Hiatt, Almarie Kendall, Margaret Chance, Jake Wright, Allen Bergert, Bobby Ditmore, Oren Irion, Jack Spratt, Billy Merritt, Buddy Joseph, Ethel Kayser, Wendell Sockwell.

Fifth Row: Glen Wright, Clive Neal, Buddy Mitchell, J. D. Pullen, Donald Pyle, Robert Nigh, Charles Wilson, G. E. Jones.





Summer Session Annual Committee

1940

Sponsor, C. T. Eskew

Dick Reavis, make-up editor; Otis Dell Miser, chairman; Oleta Wood, secretary-treasurer.

Student Council

Summer 1940

Sponsor, C. T. Eskew

OFFICERS

President	BOB KLINE
Vice-president	MOSE SIMS
Secretary-treasurer	FAYE DOYEL

Seated: Kathryn Adams, C. T. Eskew, Mose Sims, Bob Kline, Faye Doyel.
 Second Row: Avis Griggs, Iris Savage, Patty Wygle, David Berry, Dee W. Walburn, Imogene Raney.
 Back Row: Glenn Donaldson, Bob Hardin, Garland Minton, Frank Polk, Elois Morris, Ervin Berry.





Women's Athletic Association

Summer 1940

Sponsor, Mrs. M. M. Vickers

OFFICERS

President JUANITA MAYHUGH
 Vice-president OPAL McCOLLUM
 Secretary-treasurer OLETA WOOD

Front Row: Pauline Riley, Mrs. M. M. Vickers, Opal McCollum, Juanita Mayhugh.
 Back Row: Margaret Haynie, Kathryn Rudkins, Martha Deming, Ruby Trissell, Oleta Wood.

International Relations

Summer 1940

Sponsor, Dr. Dora Ann Stewart

OFFICERS

President DEE W. WALBURN
 Secretary-treasurer JUANITA MAYHUGH

First Row: Dora Ann Stewart, Bula Bachman, Helen Davis Hatchett, Thelma Thomas, Juanita Mayhugh, Dee W. Walburn.
 Second Row: Nellie Kidd, Carol Burns, Jennie Shaw, Goldie Klump, Elizabeth Geddes, Vallie Russell, Abbie Boaldin, Alma Shinn, J. L. Buck.
 Third Row: Neva Carter, Cuma Lee Haver, Yvonne Lee Pendleton, Lois Purdy Coffman, Allie Thomas, Georgiana Barr, Madaline Carpenter, Faye Stoddard, Elizabeth Bailey, Oleta Wood, Mable Rudd, Herschel Choice, C. T. Suffridge.
 Fourth Row: Earl Van Buskirk, G. Y. Fails, Irene Powers, Burnice Suffridge, Jerry Ebert, David C. Berry.





Wesley Foundation

Summer 1940

Sponsor, Dr. Clarence McCormick

OFFICERS

President	GERALDINE McPHERSON
Vice-president	CECIL SHARRY
Secretary-treasurer	GENEVIEVE McROE

Front Row: Miriam D. Minor, Lois Faye Hays, Hazel Cox, Olga Hanni, Luvern Widney, Dr. Clarence McCormick.
Back Row: Lorene Groenewold, Evelyn Thomason, Mary Ogburn, Tommy Loys Fewell, Winifred Van Gundy, Geraldine McPherson, Inez Hughes, Elois Morris.

B. S. U.

Summer 1940

Sponsor, Dr. Dora Ann Stewart

OFFICERS

President	GLENN VENARD
First vice-president	LUCILLE GIBSON
Second vice-president	HELEN WILSON
Third vice-president	EDITH AMBURN
Secretary-treasurer	ROBERTA KOSCHESKI
Pianist	LUCILLE WARD
Chorister	MARY LOU CLARK

First Row: Lucille Ward, Carl Mabra, Wendell Sockwell, Glenn Venard, Dora Ann Stewart, Allie June Sells, Mabel Sockwell, Edith Amburn.

Second Row: Vera Jon Riley, Josie Mae Patton, Edith Beaty, Mable Rudd, Elva Dickey, Helen Wilson, Lucille Gibson, Eileen Huddleston, Iris Turbyfill.

Third Row: Leila Riley, Frances Hess, Charles Haywood, June Smith, Mrs. Lena Simmons, Maude Boyle, Wilma Leighton, Roberta Koscheski, Ethel Schmidt, Virginia Bessett, Mildred Anderson, Mary Lou Clark.





Y. M. — Y. W.

Summer 1940

Sponsors, Mrs. Charles Addison and Earl Hamburger

OFFICERS

President _____ LOIS HARRIS Secretary-treasurer _____ INEZ HUGHES

First Row: Cecil Sharry, Geraldine McPherson, Margaret Smith, Iris Turbyfill, Winifred Van Gundy.

Standing: Earl Hamburger, Mrs. Earl Hamburger, Mildred Anderson, Allie June Sells, Mary Ellen Flynn, Elva Dickey, Lois Harris, Mildred Langford, Jewel Wilcoxson, Pansy Hensley, L. Taylor, Luvern Widney, Mrs. Charles Addison.

Alpha Phi Sigma

Summer 1940

Sponsor, Miss Magnolia Gee

OFFICERS

President _____ G. Y. FAILS Treasurer _____ FAYE DOYEL
Vice-president _____ DAVID BERRY Corresponding Secretary _____ Iona Watson
Secretary _____ AVIS GRIGGS

First Row: Magnolia Gee, Gladys McCormick O'Neal, Kathryn Adams, Ethel Kayser, Mrs. Alen C. O'Rear, Jane Lee Hall, Mildred Anderson, G. Y. Fails.

Second Row: Martha Nell Darnell, Florence Pair, Arline Buntley, Eula Spain, Claudia Lindblad, Faye Doyel, Virginia Duff, Lucille Ward, Iona Watson, Dee Walburn.

Third Row: Rosella Harms, Verla Tate, Madoline Carpenter, Elizabeth Bailey, David Berry, Avis Griggs, Oneta Garvin, Ernest Terry, Edna Woodward.





"Craig's Wife"

Director, Mrs. Elsie McClure Chapman

Left to right: Marguerite Deming, T. W. McCowen, Ernest Lewis, Charles Terry, Ardalene Nease, Doleta Williams, Betty Wright, Marguerite Alvis, Rosemary Leon, Guy Ewing, Bob Moore.

Aviation Group

Summer 1940

J. C. Barnett, Director

First Row: Herschel Choice, Ralph Abercrombie, James Skiles, Bill Roush, Raymond Holsey, Junior Neff.

Back Row: Woodrow Emmerson, Harry Ewing, David Bowersock, Brent Oberer, J. C. Barnett, instructor; Duke Cooper, Woodrow Smith, Lee Winters, Arthur Evans.





Stewart Hall

Summer 1940

Sponsor, Mrs. Earl Beiland

OFFICERS

President	DOLETA WILLIAMS	Sergeant-at-arms.....	HELEN McLAUGHLIN
Vice-president.....	BETTY LOU WHEELER	Social Chairman.....	KATHLEEN JOHNSON
Secretary-treasurer	FAYE DOYEL	Pianist.....	MARGARET CHANCE
	Song Leader		GENEVA SIMS

First Row: Kathleen Johnson, Doleta Williams, Betty Lou Wheeler, Helen McLaughlin.
Back Row: Margaret Chance, Faye Doyel, Geneva Sims.

Neff Hall

Summer 1940

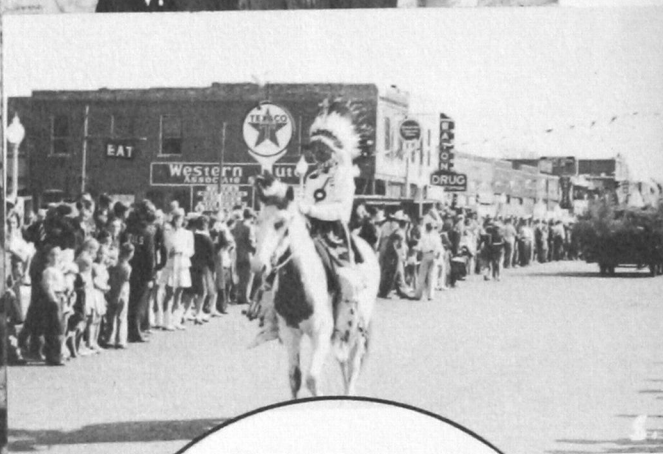
Sponsors, Mr. and Mrs. M. M. Vickers

OFFICERS

President	OTIS DELL MISER	Reporter.....	DICK REAVIS
Vice-president.....	ED BOYD	Song Leader	MOSE SIMS
Secretary-treasurer.....	G. Y. FAILS	Hostess	MRS. M. M. VICKERS
Sergeant-at-arms.....	CLAUDE WILLIAMS	Proctor	MR. M. M. VICKERS

First Row: Dick Reavis, Mrs. M. M. Vickers, Mr. M. M. Vickers, Otis Dell Miser.
Second Row: Claude Williams, Ed Boyd, Mose Sims, G. Y. Fails.





- No. 1 Good, wholesome food!
The college cafeteria.
- No. 2 Coming up the walk.
- No. 3 Resting—Summer tour.
- No. 4 Homecoming parade.
- No. 5 Just before the gridiron
battle.
- No. 6 Bonfire and fever that
doomed the Bronchos.
- No. 7 Five pretty misses.
- No. 8 Chief Hazlet.





Everything for the school but the Teacher

★ ★ ★

COLLEGE BOOK SHOP

South of Campus

WEATHERFORD, OKLAHOMA

TEACHERS!

*write for our free
catalog containing all
the latest educational
equipment, supplies and
books from primary
thru college.*



LEE RATCLIFFE

*We carry a
complete high quality
and low price stock
in our store. When
in Weatherford we invite
you to drop in and
visit with
us.*

distinctive

PRINTING

THE

Weatherford News

"A Community Newspaper"



THE BUNGALOW THEATRE

The Showplace of Weatherford



College Lunch

Corner of College and Custer Streets

"A better place to meet and eat"

Good Food

Priced Low



BISHOP'S *Apartment Hotel*

•
"A better place to live"
•

We are proud of the students that
live with us

120 E. Main

Phone 201



SOUTHWEST Imperial Dairy

•
*Pasteurized Products
Used by Particular Folks*
•

**PASTEURIZED MILK, CULTURED
BUTTERMILK, COTTAGE CHEESE
SWEET CREAM**

*Two Deliveries Daily
Phone 1601-F-1*

H. A. KAISER, Manager



EATON DRUG CO.

"A First Class Drug Store"

Phone 39



DAVIDSON & CASE LUMBER COMPANY

LUMBER

PAINTS

HARDWARE

PHONE 97



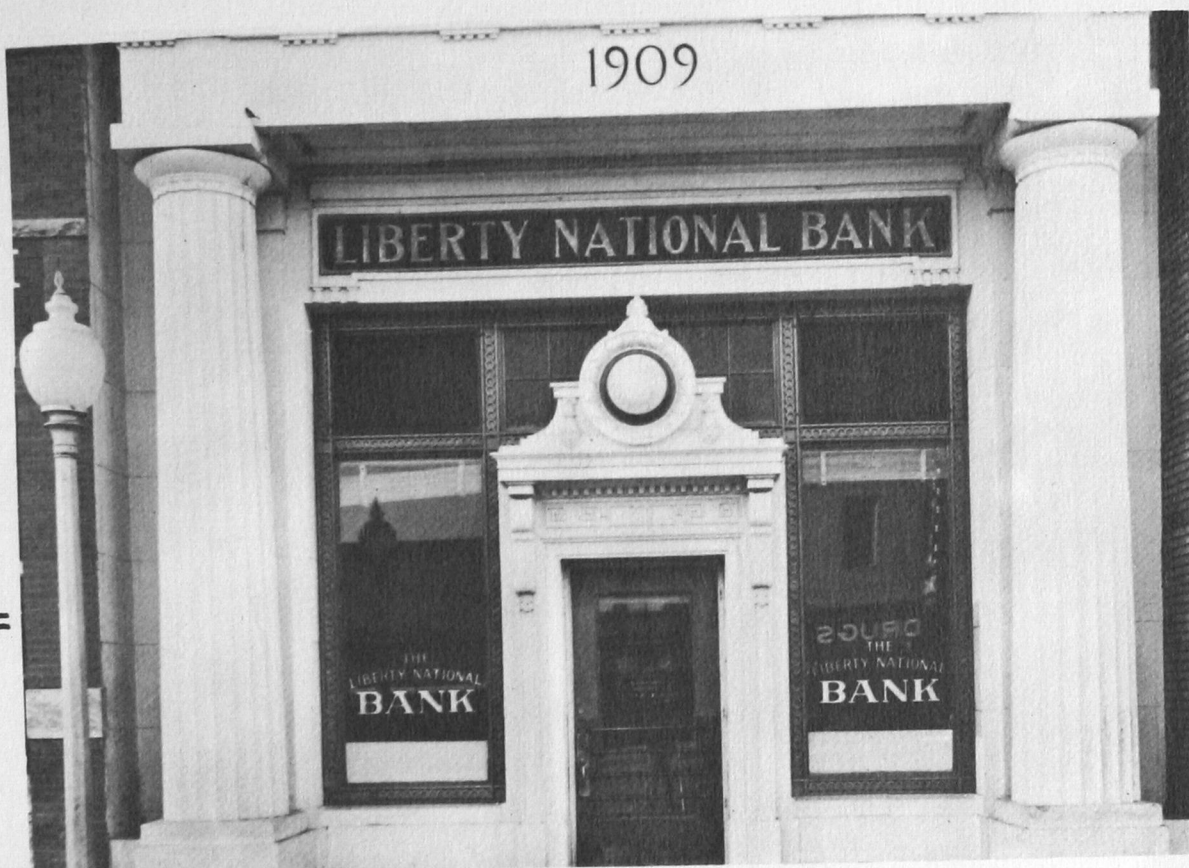
WHITE'S

"Make your house a Home"

PHONE 118

Weatherford, Okla.

HIGHEST QUALITY—LOWEST PRICES—EASY TERMS



THE LIBERTY NATIONAL BANK

Capital and Surplus \$75,000.00

•
*Serving Weatherford and community
for 37 years*
•

C. H. McBURNEY, President

L. R. DAWSON, Executive Vice Pres.

MILES NORMAN, Cashier

POSED BY

Miss Marguerite Deming

TRI-J



IN REMEMBRANCE OF MANY HAPPY HOURS;
... A MOMENT FROM YOUR COLLEGE LIFE TO
TREASURE FOREVER.

HOFFMAN PHOTOGRAPHY

Lon L. Hoffman

Mozelle Hoffman

108 N. Custer

Phone 89

WEATHERFORD



Though there are changes each year in the personnel and student body of Southwestern, the fundamental purpose and achievement of preparing the students for a better Citizenship never changes.

●

SECURITY STATE BANK

WEATHERFORD, OKLAHOMA

All deposits insured up to \$5,000.00
by the
FEDERAL DEPOSIT INSURANCE CORPORATION



YOU KNOW—
WE KNOW OUR GROCERIES

THACKER BROTHERS

Fine Foods .. Pastries .. Meats

Phones 181—281

Free Delivery

Attractive!

See and drive the New Chevrolet

H. & H. Chevrolet Co.

Sales and Service

Chevrolet
&
Oldsmobile

TRAINED SERVICE MEN

•
WRECKER SERVICE
•

City Phone 350

Rural Phone 59



STREAMLINING...



Paul Bennett, head of the Annual Department, SEMCO COLOR PRESS, points out to 1941 BULLDOG Editor, Glenn Shelton, and his assistants, some of the fine points in preparation of streamlined yearbook copy.

...the 1941 BULLDOG!

Helping prepare THE 1941 BULLDOG has been a pleasure. We got as much fun from it as any of you. For Text Books, Laboratory Manuals and School Annuals, SEMCO maintains a full-time department devoted to Fast, Superior, Economical service.

SEMCO COLOR PRESS

PRINTERS • PHOTO-LITHOGRAPHERS • PHOTO-ENGRAVERS • ADVERTISERS

414-16 N. W. THIRD ST. • PHONE 3-4488 • OKLAHOMA CITY

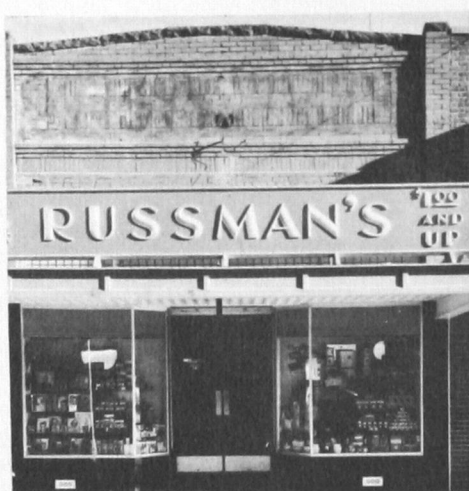


THE PEOPLES STORE

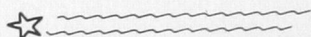
*Weatherford's
Leading Department Store*

Nationally Known
College Apparel

Russman's
5c TO \$1.00 STORE



You will find a cordial welcome in our store
at all times



*College Clothes
for
College Students*

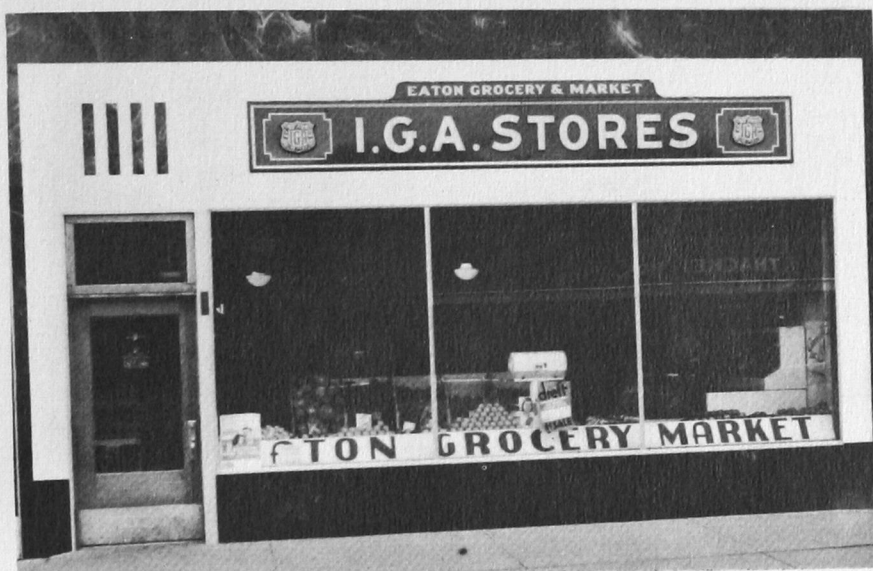
•
MAKE OUR STORE YOUR
DOWNTOWN HEADQUARTERS
•

COY BEST
Manager

ELBERT HICKS
Ass't Manager

C. R. ANTHONY

DEPT. STORE
WEATHERFORD



Little wonder that this firm counts the faculty, students and former students and alumni among its closest friends. The owners are graduates or former students. In addition to the owners, four of the full time employees are former students. Four of the part time employees are now students who are partially paying their way through college through the assistance of this firm. In the past five years, more than forty-five students have been given work through this firm.

When you help us, we help you, and together we all help others.

Eaton Grocery and Market



WEBB and ARMSTRONG **FORD DEALERS**

• • • We Trade High—New and Used Cars • • •

Expert Repair Work, All Make Cars

206 S. Broadway
Arch Webb

Phone 209
Luther (Tudor) Armstrong

McINTIRE LUMBER COMPANY

A Complete Line of "Better Building Materials"

PHONE 430



R. A. YOUNG COMPANY

5¢ to \$1.00 Store

Students
work
here.

Trade
with
them.



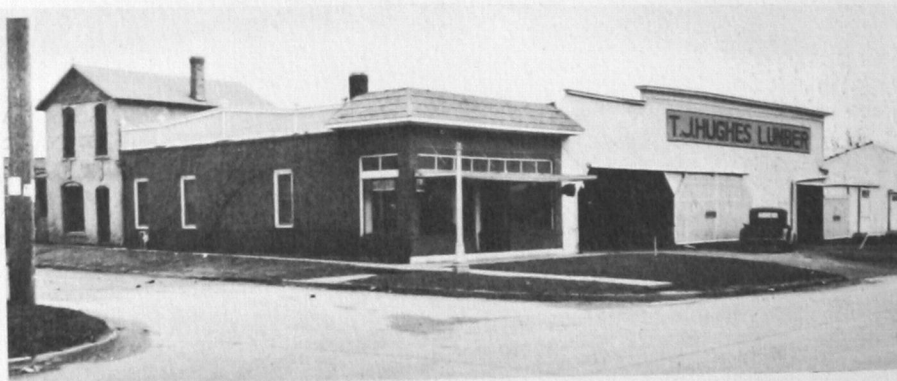
Your
business
solicited
and
appreciated.

Phone 108

Popular Prices—Students Shop here for Fine Quality

TOILET GOODS—SCHOOL SUPPLIES—CANDY
NOTIONS—LINGERIE—HOSIERY

Roy Oberman, Mgr.



T. J. HUGHES LUMBER

"QUALITY MATERIALS COST NO MORE!"

Phone 150

Weatherford, Okla.

Rural Phone 57

This page intentionally left blank.



