



---

10-29-2014

## Volume 106 Issue 8

Southwestern Oklahoma State University

Follow this and additional works at: [https://dc.swosu.edu/the\\_southwestern](https://dc.swosu.edu/the_southwestern)

---

### Recommended Citation

Southwestern Oklahoma State University, "Volume 106 Issue 8" (2014). *The Southwestern*. 48.  
[https://dc.swosu.edu/the\\_southwestern/48](https://dc.swosu.edu/the_southwestern/48)

This Book is brought to you for free and open access by the Newspapers at SWOSU Digital Commons. It has been accepted for inclusion in The Southwestern by an authorized administrator of SWOSU Digital Commons. An ADA compliant document is available upon request. For more information, please contact [phillip.fitzsimmons@swosu.edu](mailto:phillip.fitzsimmons@swosu.edu).



Southwestern Oklahoma State University's Student Publication

# The Southwestern

Volume 106 Issue 8 • October 29, 2014

## Walters sophomore wins crown



Lacey Anderson of Walters (middle) won the title of Miss SWOSU at the annual pageant held October 25 on the campus in Weatherford. Finalists were (from left): Tiffany Sauer, Weatherford, fourth runnerup; Allie Ayers, Snyder, second runnerup; Jordan Grubb, Weatherford, first runnerup; and Rachel Penry, Leedey, third runnerup.

## Anderson wins pageant title

Lacey Anderson, a Walters sophomore at Southwestern Oklahoma State University, won the crown of Miss SWOSU 2015, while Meaghan Dorn, a junior at Blair High School, won the title of Miss SWOSU's Outstanding Teen at Saturday's (October 25) pageants.

The pair won the titles on the Weatherford campus.

Anderson will represent SWOSU at next summer's Miss Oklahoma Pageant, while Dorn advances to the Miss Oklahoma's Outstanding Teen Pageant, which is held the same week at the Miss

Oklahoma Pageant in Tulsa.

Anderson, who finished first runnerup in 2013, won \$2,600 SWOSU and \$233 Children's Miracle Network scholarships; \$1,000 cash award; and over \$3,000 in gift certificates and various gifts from area businesses. She is majoring in nursing. Her platform issue is "Developing Youth Through 4-H." Anderson also won the Lifestyle/Fitness in Swim Suit and Peer Respect/Leadership awards.

Jordan Grubb of Weatherford finished as first runnerup and winner of a \$1,600 scholarship. She

also won the Talent, Most Scholarship Patrons Sold and Crowd Pleaser awards.

Allie Ayers of Snyder was second runnerup and winner of a \$1,100 scholarship. Ayers also won the Most Tickets Sold award.

Rachel Penry of Leedey finished as third runnerup and winner of a \$900 scholarship, and Tiffany Sauer of Weatherford won fourth runnerup and an \$800 scholarship.

Ten SWOSU students competed for the title. All non-finalists each

**See Pageant on page 2**



Seventh Day Slumber

## Event Center hosts concert on Nov. 6

By REBECCA DILL  
Staff Reporter

Seventh Day Slumber, a Christian rock band, will be performing in the Pioneer Cellular Event Center on Thursday, Nov. 6. The staff at the event center, along with the community, is making the concert accessible to many young people in Weatherford.

For this event, the staff at PCEC is working to promote church or organization sponsorship of the concert.

"I would love for us to be able to give a ticket to every single Weatherford student as a gift from the community churches," said Nathan Smith, the center's director.

According to Smith, many churches and businesses have already made the commitment to sponsor tickets that will be handed out to students.

Churches and organizations that sponsor are welcome to hand out their own tickets and may provide a bulletins or business cards to hand out as well. If a representative cannot be present to hand out their sponsored tickets, the staff at PCEC will take care of distributing them.

Smith is also urging community church leaders to be a part of the event by offering their services as counselors at the concert.

Each sponsored ticket costs \$10. The money goes toward band expenses, travel costs, promotion of the concert, and catering for the event.

The concert is open to everyone. The event center

**See Concert on page 2**

### Football



LOSS AT ADA  
--page 5

**Duke's Diner  
Annual  
Halloween  
Dinner  
Thursday,  
Oct. 30  
5-7 p.m.**

### WEEKLY WEATHER

SOURCE: WEATHER.COM

WED	THUR	FRI
72/49	76/48	69/46
SAT	SUN	MON
69/53	71/56	72/45

## First play offers twist on Shakespeare

Southwestern's production of A Midsummer Night's Dream will take place November 6-8.

The romantic comedy of William Shakespeare's is presented by the SWOSU Department of Art, Communication, and Theatre.

Through three interwoven plots, the audience is introduced to a series of events surrounding the marriage of Theseus, the Duke of Athens and Hippolyta. The adventures involve four young lovers, a group of rude mechanicals (who are also amateur actors), and fairies who inhabit the woods and play tricks and cast spells upon those who visit their midst.

What ensues, according to director Steve Strickler, is a lot of chaos and passion, thus proving the truth in one of the young lover's lines when he states, "The course of true love never did run

smooth."

The production is 7:30 p.m. nightly in the SWOSU Hilltop Theatre. Admission is \$5 for adults, \$3 for non-SWOSU students and free for individuals with a valid SWOSU ID. Tickets can be obtained at the box office on Mondays through Fridays from 4-7 p.m. by calling 580.774.6046.

The cast includes Kris Benton, Corianne Fairchild, Isabella Jennings and Joshua Ramos as the young lovers. The royalty are portrayed by Addy Dirks, Bethany Peyton, Chandler Seaton and Merritt Taylor. The Rude Mechanicals are Sheri Flowers, Beth A. Goodin, Chelsey Hardin, Amber Hayes, Wes Hayes and Jordan Satterlee. The Fairy Kingdom includes Carlyn Magness, Marisa Molnar, Monica Sallaway, Lindsee Scott and Nakita Young.



Members of the cast and crew for the SWOSU production of A Midsummer Night's Dream are (first row from left): Sheri Flowers, Edmond; Corianne Fairchild, Leedey; Jordan Satterlee, Oklahoma City (Putnam City); Carlyn Magness, Shattuck; Marisa Molnar, Fay; Rhiannon Jensen, Woodward; and Amber Hayes, Howe TX. Middle row from left — Monica Sallaway, Claremore; Bethany Peyton, Moore; Lindsee Scott, Guymon; Addy Dirks, Woodward; Bath A. Goodin, Ardmore (Dickson); and Wes Hayes, Howe TX. Back from left — Holly Davis, Haven KS; Nakita Young, Hobart; Amber Bachiochi, Sweetwater; Josh Ramos, Tulsa (Union); Kris Benton, Stroud; Isabella Jennings, Oklahoma City (NW Classen); Chelsey Hardin, Cordell; Merritt Taylor, Cordell; Calley Lamar, Okeene; and Faculty Debra Holmes.

## Ebola crisis reaches United States, students voice concerns

By THE SOUTHWESTERN STAFF

Southwestern students are just like the rest of the nation -- they're talking about Ebola.

The Ebola crisis has risen to the top of the national conversation due to its quick spread across the globe and deadly nature.

Ebola is a virus that results in a deadly dis-

ease. A person who has contracted the disease has the symptoms of high fever and internal bleeding. If untreated, the result is often death. Typically, symptoms appear 8 to 10 days after the exposure to the virus, but the incubation period can span from 2 to 21 days.

The Ebola outbreak is currently centralized in Africa. Specifically, Liberia and the Demo-

cratic Republic of Congo are the hardest hit countries, with 2,709 deaths in Liberia alone. Nearly 10,000 sicknesses and over 4,000 deaths have been caused by the virus.

One death in the United States has been caused by Ebola. A person who was help-

**See Ebola on page 2**



# NEWS/OPINION

## Concert from page 1

staff hopes that college students and ministries will also get involved and bring their groups to the concert.

"We're grateful for the community's support behind this. There are countless reasons to visit and stay in Weatherford, and we're glad we can add to that list by bringing another great event to the City of Weatherford," said Smith.

The frontman of the Seventh Day Slumber, Joseph Rojas has traveled through life from hurt to redemption. According to the band's official website, before Rojas found Christ, his songs were devoid of hope and offered no solutions. "All the songs I had written prior to becoming a Christian could be called A Decade of Pain," Rojas said. "Now, I still write about hurting and how I make mistakes, but I know that God has taken us from nothing and given us hope and life."

Tickets are available online at [www.pioneercellulareventcenter.com](http://www.pioneercellulareventcenter.com). They are \$12 for individuals and \$10 for groups of 15 or more. The concert begins at 7 p.m. and will also feature Nine Lashes and Days Eye.

To become a sponsor of this event, contact Nathan Smith at 580.774.3700 or [nathan.smith@swosu.edu](mailto:nathan.smith@swosu.edu).

Pioneer Cellular Event Center would like to thank the following sponsors in Weatherford for making this event possible: Big Rig Beef Jerky, Solstice Tanning Company, Holiday Inn Express, Emmanuel Baptist Church, and Pine Acres Baptist Church.

## Health Careers Day set for next Friday, Nov. 7

Registration is underway for an upcoming Health Careers Day to be held at Southwestern on Friday, November 7.

The free event is for any prospective health career student and will be held from 9 a.m. until 12 noon at the new Pioneer Cellular Event Center. Register online at: [www.swosu.edu/admissions/health-careers-day.asp](http://www.swosu.edu/admissions/health-careers-day.asp) or call 580.774.3782 or email [admissions@swosu.edu](mailto:admissions@swosu.edu).

"The SWOSU Health Careers Day is a great opportunity for high school students as well as adults to learn more about the

possibilities that exist in so many areas of the health care industry," said Todd Boyd, director of admissions/recruitment.

Table exhibits will be set up in the following areas: athletic training; biology; chemistry; health care administration; health sciences; kinesiology/exercise science; medical laboratory technician music therapy; nursing; occupational therapy assistant; pharmacy; physical therapy assistant; radiologic technology; and pre-professional areas of pre-med, pre-dental and pre-optometry.

## Ebola from page 1

ing the health crisis in Liberia came home to Dallas, TX, unknowingly infected with the disease. He died soon after, but not until two health workers who helped him also came down with the disease.

Southwestern students have not been directly affected by the disease but some have thought plenty about it.

Alyx Cheatham said she is not doing much to prepare for Ebola. "I haven't given too much thought of Ebola possibly coming to SWOSU and I'm not taking any particular precautions to avoid it," Cheatham said. "I'm hoping for the best that SWOSU and the rest of Oklahoma won't be affected."

Tori Leveridge is doing a little more, but not much. "It's a concern but I'm not freaked out. I'm not going about my life any differently," Leveridge said. "I'm treating it like the common flu or cold by washing my hands and taking precautions but I'm not freaked out."

Bailey McCann, however, is a little freaked out. She is scared about how the disease will spread too quickly for health officials to respond. "Hospitals aren't prepared," McCann said.

The Ebola crisis has led to many debates across the country rang-

ing from health official reactions to travel issues.

Some people have wondered if the United States should use this crisis as a catalyst for tightening immigration policies. "My concern is with our unprotected border where people with Ebola and other infectious diseases can enter the country without being challenged," said Scott Brown, a Senate candidate in New Hampshire.

The sole idea of Ebola has become a frightening thought. It has led to entire countries worried about how they are associated with the word. In an interview done on [www.who.int](http://www.who.int), Jeffrey Hawkins, the United States Consul General in Nigeria, said, "The last thing anyone in the world wants to hear is the two words, 'Ebola' and 'Lagos' in the same sentence." As he noted, that single juxtaposition conjured up images of an "apocalyptic urban outbreak."

Some people have criticized the United States health industry on how it handled the first domestic case of Ebola in Dallas. Some believe the Center for Disease Control should have stepped in more quickly.

"The CDC should have done its job," said Matt McKellips, a senior mass communication major.

The CDC believes that steps have been taken to minimize the danger of Ebola in the United States. One thing that may keep it from spreading quickly in the United States is that it is not highly contagious.

According to CNN Ebola is extremely infectious but not extremely contagious. It is infectious, because an infinitesimally small amount can cause illness. Laboratory experiments on nonhuman primates suggest that even a single virus may be enough to trigger a fatal infection.

According to The New York Times, the CDC has reported that the virus can survive only for a few hours on dry surfaces like doorknobs and countertops and can survive for several days in puddles or other collections of bodily fluid. Bleach solutions can kill it.

Students on campus are paying attention to how the disease can be prevented or cured. Senior biology major Yi-Ju Ting has followed the use of a drug called ZMapp. "ZMapp is a possible drug which is successfully experimented on monkeys to cure Ebola virus," Ting said. "When the virus infects the tobacco plant, it will induce protein. Scientists can use this method to deal with Ebola."

## Pageant from page 1

won \$500 SWOSU scholarships.

For winning the Miss SWOSU's Outstanding Teen title, Dorn won a \$600 scholarship to SWOSU; \$500 cash award; and over \$2,000 in gift certificates and various gifts from area businesses.

Jahven Tanner of Weatherford finished as first runnerup. She won a \$400 scholarship to SWOSU and various gifts and certificates. Melanie Mikles of Elk City finished as second runnerup and won a \$300 scholarship to SWOSU.

Abigail Billings of Woodward won the Talent Award, Most Scholarship Patrons Sold and Most Tickets Sold awards. Mikaela Nottingham of Lawton won the Crowd Pleaser Award.

All non-finalists in the teen pageant each won \$100 SWOSU scholarships.



Meaghan Dorn (middle) of Blair won the title of Miss SWOSU's Outstanding Teen at the annual pageant held October 25 on the campus in Weatherford. Other finalists were (left) Jahven Tanner, Weatherford, first runnerup; and Melanie Mikles, Elk City, second runnerup.

# Reckless Driving

IS ONE PARTY YOU DON'T WANT TO CRASH

**( There is no cheesy slogan )  
to prevent reckless driving. )**

There is no spokesperson with a catchy phrase to remind the driver to slow down, stop eating, quit messing with the radio or pay attention to the road. **There's Only You. Speak Up.**

[URTheSpokesperson.com](http://URTheSpokesperson.com)

**CJ'S SOUTHWEST TIRE**

ALWAYS MOVING FORWARD

111 S KANSAS  
WEATHERFORD OK 73096

PHONE: 580-772-3132  
24HR CELL: 580-774-5427  
TOLL FREE: 800-294-3132

## The Southwestern

Fall 2014

---

THE SOUTHWESTERN is the student newspaper of Southwestern Oklahoma State University. It is published every Wednesday during the fall and spring semesters, except during holidays and finals week. Students in the editing class serve as section editors, and students in the news gathering and reporting class serve as writers.

The editorial board meets every Wednesday at 2:00 p.m. in the journalism lab, Campbell 211.

THE SOUTHWESTERN encourages comments from the student body, faculty, and administration in the form of letters to the editor. All letters must include a name for consideration; however, the name may be withheld upon request.

The opinions expressed within signed editorials are the opinions of the writers; the opinions expressed in unsigned, boxed editorials are the opinion of the staff. Neither is necessarily the opinion of the university administration, staff or faculty.

**The Southwestern**  
Southwestern Oklahoma State University  
100 Campus Drive  
Weatherford, OK 73096

(580) 774-3065

[thesouthwestern@swosu.edu](mailto:thesouthwestern@swosu.edu)



# NEWS

## Mind Game team starts season with win

Southwestern Oklahoma State University's "Blue" Mind Games team opened the 2014-15 season with a 700-270 win over East Central University in action aired October 26 on KSBI-TV.

SWOSU, two-time defending grand champion of the academic competition involving all universities and colleges in Oklahoma, has two teams in this year's competition. The "White" team opens play this Sunday, November 2, at 5:30 p.m. against Southeastern Oklahoma State University.

Members of the SWOSU Blue team are: Ashley DeVaughan, Fort Cobb; Mandi Foutch, Seiling; Jordan Sage, Binger; and Montgomery Long, Marlow.

Members of the SWOSU White team are: Zeke Mills, Springfield (MO); John Foley, Turtle; and Maddie Moss, Holdenville.

Both squads are coached by Dr. Fred Gates, professor of history at SWOSU. The students compete for scholarship money provided by The Chickasaw Nation and Oklahoma Energy Resources Board.

## Moon festival set for Thursday at Crowder Lake

A Moon Festival featuring an Asian lion dance, campfires, s'mores, Chinese paper lanterns, Vietnamese desserts, hot milk tea, DJ LiteBrite and a Halloween costume contest is planned on Thursday, October 30, at Crowder Lake University Park, located south of Weatherford.

The public is invited and encouraged to attend the free event being sponsored by the Asian American Student Association at Southwestern Oklahoma State University.

The event starts at 6:30 p.m., according to Morgan Patton of the AASA. It is a come-and-go event. The DJ show will start at 6:30 and the Asian lion dance will begin approximately 8:30 p.m.

## Symposium to focus on Sand Creek Massacre

A free symposium to commemorate the sesquicentennial of the Sand Creek Massacre is coming Monday, November 3, on the Southwestern Oklahoma State University campus in Weatherford, and the deadline to register is October 31.

Several accomplished speakers will talk about the November 29, 1864 event that involved approximately 675 United States volunteer soldiers who attacked a village of about 700 Cheyenne and Arapaho Indians along Sand Creek in southeastern Colorado Territory.

Using small arms and howitzer fire, the troops drove the people out of their camp. While many managed to escape the initial onslaught, others, particularly noncombatants, fled into and up the bottom of the dry stream bed. Over the course of eight hours, the troops killed around 200 Cheyenne and Arapaho people composed mostly of women, children and the elderly.

The symposium will start at 9:30 a.m. in the SWOSU Conference Center, located at the corner of Davis and Seventh Streets, in Weatherford. Among the guest speakers will be:

Chief Harvey Pratt, Cheyenne and Arapaho Peace Chief and accomplished master Native American Indian artist.

Dr. Henrietta Mann, president of the Cheyenne & Arapaho Tribal College and direct descendent survivor of the Sand Creek Massacre

Jerome Greene, author and former historian for the National Park Service

Dr. Bob Blackburn, executive director of the Oklahoma Historical Society

The opening ceremony will include the Riverside Color Guard and a drum group.

Even though the event is free, an RSVP is needed by October 31 for the lunch. Call the SWOSU Public Relations & Marketing Office at 580.774.3063.

The event is being sponsored by the SWOSU Masonic Lecture Series Endowment. This fund was established by a generous grant from the Masonic Fraternity of Oklahoma.



Harvey Pratt



Henrietta Mann



Jerome Green



Dr. Bob Blackburn

## Crossword (courtesy of mirroreyes.com)

- ACROSS**
- 1. Volumes
  - 6. Use a beeper
  - 10. Dull pain
  - 14. Watchful
  - 15. Emanation
  - 16. Not "To"
  - 17. Rental agreement
  - 18. Blend
  - 19. Carry
  - 20. Competitor
  - 22. Pitcher
  - 23. Impoverished
  - 24. Barely
  - 26. Biblical garden
  - 30. Biblical boat
  - 31. A type of evergreen tree
  - 32. Roman emperor
  - 33. Remits
  - 35. Audio communications
  - 39. Tooth doctor
  - 41. Berthing
  - 43. Velocity
  - 44. Always
  - 46. A romantic meeting
  - 47. Married
  - 49. A late time of life
  - 50. Blackthorn
  - 51. Commotion
  - 54. Sleigh
  - 56. Jetty
  - 57. A cherished desire
  - 63. Way out
  - 64. Delight
  - 65. Make a counterfeit
  - 66. Near
  - 67. Not yours
  - 68. Coquetry
  - 69. Declare untrue
  - 70. Where a bird lives
  - 71. Affirmatives

1	2	3	4	5		6	7	8	9		10	11	12	13
14						15					16			
17						18					19			
20						21					22			
				23					24	25				
26	27	28	29		30				31					
32					33			34		35		36	37	38
39				40				41	42					
43						44	45				46			
			47		48		49				50			
51	52	53					54			55				
56					57	58					59	60	61	62
63					64					65				
66					67					68				
69					70					71				

- DOWN**
- 1. After-bath powder
  - 2. Margarine
  - 3. Average
  - 4. At one time (archaic)
  - 5. Precipitous
  - 6. Pastorship
  - 7. Economic independence
  - 8. Smile
  - 9. Ribald
  - 10. Subsequently
  - 11. Throng
  - 12. Inn
  - 13. Manicurist's board
  - 21. Cleansing agents
  - 25. Relating to aircraft
  - 26. Terminates
  - 27. Very intense
  - 28. Sea eagle
  - 29. Remarkable
  - 34. Stinkiest
  - 36. Found on rotary phones
  - 37. Within
  - 38. Curved molding
  - 40. Notion
  - 42. Law and \_\_\_\_
  - 45. Evening worship service
  - 48. A tropical lizard
  - 51. Flip over
  - 52. Sprite
  - 53. Rule
  - 55. Silly
  - 58. Swing around
  - 59. Lacquered metalware
  - 60. Colored part of an eye
  - 61. Monster
  - 62. Catches

## UPCOMING EVENTS

**Wednesday, October 29, 2014**

- 10:00 AM - 2:00 PM Deek Creek Conservation Area Meeting
- 11:00 AM - 1:30 PM St. Eugene College Lunch
- 12:00 PM - 1:00 PM Noonday
- 1:30 PM - 3:30 PM FLU SHOTS Offered Today
- 2:00 PM - 4:00 PM Psychology Studying Resource Center
- With Tutors
- 5:00 PM - 7:00 PM Biology Club Dinner
- 5:30 PM - 6:30 PM Community Meeting
- 7:00 PM - 8:00 PM Guest Recital: Sure Eloff, Dr. John Fisher & Gregory Rose

**Thursday, October 30, 2014**

- 12:00 PM - 1:00 PM Office Personnel Luncheon
- 1:30 PM - 3:30 PM FLU SHOTS Offered Today
- 2:00 PM - 4:30 PM Post Retirement Option Period
- 3:00 PM Soccer @ Northwestern Oklahoma State University
- 5:00 PM - 7:00 PM Duke's Diner Annual Halloween Dinner
- 6:00 PM - 7:30 PM Student Government Meeting
- 6:00 PM - 8:00 PM Tutoring for Introductory Physics
- 6:30 PM - 8:30 PM Psychology Studying Resource Center
- With Available Tutors

**Friday, October 31, 2014**

- Last Day to Drop with a Guaranteed "W" and Last Day to Add CAI Courses
- All Day BOO @ SWOSU
- 10:00 AM - 11:30 AM SSC 2014 Recognition Reception
- 11:50 AM - 1:00 PM Sayre Campus Costume Contest
- 7:00 PM - 8:00 PM Guest Artist Recital: Carlos Feller and Mary Jung

**Saturday, November 01, 2014**

- 9:00 AM - 5:00 PM Hubbard-Males Piano Competition
- 11:00 AM Volleyball @ Harding University
- 4:00 PM Football @ Southern Nazarene University
- Sunday, November 02, 2014
- 12:00 PM - 2:00 PM Soccer vs. Angelo State University
- 7:30 PM - 10:00 PM Kappa Delta Omega Meeting
- 7:30 PM - 10:00 PM Kappa Delta Omega Pledge Meeting
- 8:00 PM Zeta Phi Pledge Meeting (Multi-Day Event)

**Monday, November 03, 2014**

- All Day Sayre Campus Food Drive
- End Time 12:00 AM Zeta Phi Pledge Meeting (Multi-Day Event)
- 9:00 AM - 3:00 PM Sand Creek Symposium
- 10:00 AM - 12:00 PM Inspired Leadership Challenge Committee Meeting
- 11:30 AM - 1:15 PM FREE Lunch at the Wesley
- 6:00 PM - 8:00 PM Sigma Sigma Chi Spaghetti Supper
- 6:00 PM - 8:00 PM Tutoring for Introductory Physics
- 6:00 PM - 8:00 PM Volleyball vs. Midwestern State TX
- 6:30 PM - 8:30 PM Psychology Studying Resource Center
- With Available Tutors
- 8:00 PM - 9:30 PM BCM FORGE

**Tuesday, November 04, 2014**

- Room and Board Payments Due
- All Day Sayre Campus Food Drive
- 5:15 PM - 6:15 PM H.O.P.E Weekly Meeting
- 5:30 PM - 7:00 PM Lutheran Campus Ministry
- 6:00 PM - 7:00 PM Phi Beta Lambda (PBL) Meeting
- 6:30 PM - 8:30 PM Psychology Studying Resource Center
- With Available Tutors
- 7:00 PM Men's Basketball Exhibition Game
- 7:00 PM Women's Basketball Exhibition Game
- 8:00 PM - 9:30 PM Freshman and Upper Class-man Bible Study
- 8:00 PM - 10:00 PM The Wesley

**Wednesday, November 05, 2014**

- All Day Sayre Campus Food Drive
- 8:00 AM - 11:00 AM Teacher Candidate Mock Interviews
- 10:00 AM - 1:00 PM Flu Shots Offered Today on Sayre Campus
- 11:00 AM - 1:30 PM St. Eugene College Lunch
- 12:00 PM - 1:00 PM Noonday
- 2:00 PM - 4:00 PM Psychology Studying Resource Center
- With Tutors
- 4:30 PM - 8:00 PM Orientation Leader Meeting
- 5:00 PM - 7:00 PM Medical Professions Club
- 5:30 PM - 6:30 PM Community Meeting

**LOCATED NORTH OF DAVIS ROAD ON HIGHWAY 54 IN WEATHERFORD**

**FOLLOW US ON FACEBOOK AND TWITTER**

**NEVER A COVER CHARGE TO ENTER**  
MUST BE 21 TO ENTER!!!!

**Free Pool Daily**  
1-5 Monday-Friday

**Karaoke Night:**  
Wednesday February 26th and  
Wednesday March 12th  
9:30 P.M

**More Specials every night!**



# FEATURES

## Social media and schoolwork battle for students' attention

LAUREN ELROD  
Staff Reporter

Sarah has two homework assignments and a test due the next day. She started to work on them several hours ago, but only spent a few minutes on them. The rest of the time she has been on Twitter and Instagram checking and rechecking her time line. Sarah is an example of a typical student that has fallen victim to the distraction of social media.

There are millions of different social media websites out there, the most popular are Facebook, Twitter, and Instagram. Students are always on their phones, posting statuses, tweets, and pictures.

Are social media sites causing students to be distracted from studying resulting in receiving failing grades? An article from The Legacy Press says that students are distracted by their phones because it produces something more interesting than their school work.

"Honestly, students do not care about homework when they can have Facebook and Instagram. That is the attitude that most teenagers have toward their school work." Said Noah Sanchez, the writer of the article.

Sanchez said that phones give out distractions every minute of the day, making it hard to focus. He said the temptation of the access to friends and media hanging over head is too big of a challenge to ignore. It is better for phones be "out of site out of mind", he said.

SWOSU student Josh Ramos said that social media is distracting to students who are trying to study.

"It's not so much the social media as it is devices, tablets, cell phones and computers. They are all distracting," Ramos said.

"Social media in itself doesn't distract students, code-

pendency of social media is distracting. In the hands of a student who can resist the urge to check Facebook or Twitter, social media is not a threat," said Ramos.

According to thelivejobs.com, social media isn't all bad. It help to express creativity. Normally someone who is shy finds it easier to express interests through online sites, and students can create study groups and contact others who might be able to help them.

"Even teachers are becoming hosts of these groups to help students after hours, and that can help save grades and coursework from dropping to a failing grade," said Jaiser Abbas, writer for thelivejobs.com.

SWOSU student Wes Hayes agrees that social media is distracting to some.

"Social media can be helpful and hurtful toward a student's education," Hayes said.

According to Sanchez, not having the distraction near you helps you to focus more on the class material. If a student feels the urge to check his or her phones, try to limit it to only 15 minutes and then continue to study or do homework.

There are some ways one can avoid being distracted by social media and resulting in getting a failing grade.

OSU-OKC student, Jordan Cheek, says that she avoids being distracted by leaving her phone in a different room than she is while studying and doing homework.

"I also limit myself to 10 or 15 minutes on social media. I'll take breaks during studying or homework to give my brain a moment from thinking and relax with looking at my social media sites."

Zenhabbits.net gives 5 way for students to avoid distractions while studying or doing homework:

1. Turn off your wireless internet connection.

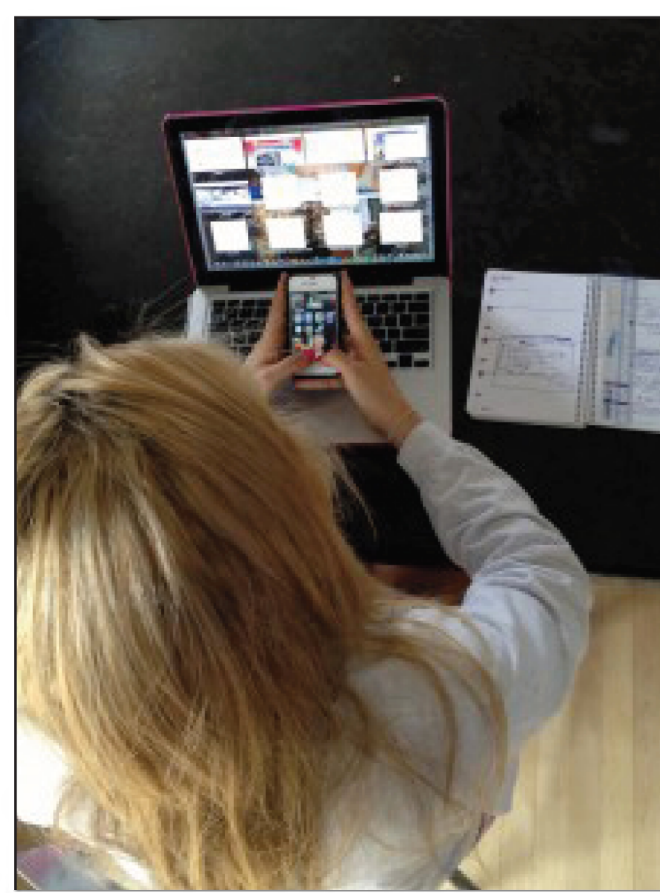


Photo courtesy Jenteal Jackson/The Forum

2. Set aside specific time for using social media or any other time of internet site.
3. Take short breaks in between studying and homework.
4. Do your work NOW rather than later.
5. Prioritize your time. You don't want to look back and realize you wasted your time on your phone or in front of a computer.

## National Wildlife Federation leader to lead Wednesday seminar

The former president and CEO of the National Wildlife Federation will speak at Southwestern Oklahoma State University on Wednesday, October 29, as part of a biology seminar series on the Weatherford campus.

Larry Schweiger will speak on "The Nature of Tomorrow: Biodiversity in a High Carbon World" at 4 p.m. in Room 212 of the Old Science Building. The

public is invited to the free presentation.

Conservation has been Schweiger's lifelong passion since spending much of his boyhood in the landscape of western Pennsylvania. Schweiger, winner of many conservation awards, experienced some of Pittsburgh's notorious air pollution episodes and witnessed the collapse of Lake Erie's fishery including the extinction of

the famed Blue Pike. As a teenager, he vowed to spend his life fighting the degradation of nature. At the age of 14, he received the Pennsylvania Game Commission's Wildlife Conservation Award for his conservation involvements.

During Schweiger's tenure with the NWF, the federation became a leading voice for warning of the many threats caused by

a rapidly warming world and urging the administration and Congress to act on carbon pollution. He worked with leaders across the United States to foster a greater understanding of the urgency of climate change.

Schweiger has served on more than 50 governing boards, commissions and advisory committees. He serves as a board member of the Climate Reality (for-

merly Alliance for Climate Protection) and The H. John Heinz III Center for Science, Economics and the Environment. He has won numerous awards for his conservation achievements.

For more information about the program at SWOSU, contact Dr. Lisa Boggs at [lisa.boggs@swosu.edu](mailto:lisa.boggs@swosu.edu) or the Department of Biological Sciences at 580.774.3292.



Larry Schweiger

That 9 dollar lunch is worth more than you think. Like 19,000 dollars more.

Pack your own lunch instead of going out. \$4 saved a day x 5 days a week x 10 years x 6% interest = \$19,592. That could be money in your pocket. Small changes today. Big bucks tomorrow. Go to [feedthepig.org](http://feedthepig.org) for free savings tips.

Ad Council ACRA

**Ratcliffe's**  
**officesolutions.com**

**Easy as 1, 2, 3**

Search and find everyday office products, including printing supplies, janitorial, and breakroom supplies

With over 27,000 items listed on our website, you are just a few clicks away from making your day easier.

**Free** Try Ratcliffe's Office Solutions and get a FREE office supply starter kit with your first order

**VOTE EARLY BY REQUESTING AN ABSENTEE BALLOT**

**LANKFORD**  
**US**  
**SENATE**

**JAMESLANKFORD.COM**

Join #TeamLankford as a College Ambassador and:

- Gain Experience
- Be Part of a Proactive Team

To Join call 405-509-1182

**STANDING STRONG FOR OKLAHOMA**




## SPORTS

## Short-handed Bulldogs almost come away with victory

WEATHERFORD, Okla. – Playing with only four available subs, SWOSU fell 2-1 to visiting Ouachita Baptist. Bryson Rial and Haley Hatcher scored two first half goals for the Lady Tigers. Cori Kelly scored the consolation for SWOSU for her fourth goal of the season.

OBU came out on the front foot in the first half, recording the first three shots of the game inside of ten minutes. Courtney Flores was called into action to make one save on a shot from Hatcher. SWOSU registered their first shot of the game courtesy of Ashlee Trotter who was making her second straight start in relief of an injured Ashlee Beitingner, but it was blocked.

Rial broke the deadlock in the 18th minute. OBU earned a free kick off a SWOSU foul in the middle of the pitch, and Alisa Trejo stepped up to take the kick. Her kick glanced off the hands of Flores who had come out to collect it, and Rial found the ball for the tap in.

SWOSU began to press for the opening goal, but were off the mark. Olivia Butler sent her first shot high over the bar in the 25th minute. Shelley Mueller followed that effort up in the 29th minute, but her shot was blocked. Her deflected shot earned a corner, which Eastman connected with, but her shot hit off the post

and out.

The Lady Tigers doubled their lead in the 42nd minute courtesy of Haley Hatcher. The Great American Conference's leading goal-scorer got herself free 20 yards out on the right side of the field. She curled her shot towards the far post and out of the reach of an outstretched Flores. OBU would carry a 2-0 lead going into the end of the half.

SWOSU took six of the first eight shots in the second half, but none found the back of the net. Kelly and Jasmine Heffley saw their back-to-back shots hit the crossbar and OBU defender respectively. Aimi Mumford recorded SWOSU's first shot on-frame when she forced OBU keeper Lauren Llanes into a save in the 66th minute.

In the final minute of the game, a nice bit of play between Kelly and Eva Rule allowed SWOSU to get on the board. Kelly sent Rule through on an incisive pass into the box. Rule got on the end of it and squared it to Kelly who had tracked to the middle of the box. Kelly made no mistake as she smashed the ball into the goal in the final seconds of the game.

Action resumes next Thursday when the Bulldogs travel to Alva, Okla., to take on rival Northwestern Oklahoma State in the final conference match of the season.



The Bulldogs travel Thursday to Alva to take on rival Northwestern Oklahoma State in the final conference match of the season. (Photo by Morgan Brian)

## Bulldog turnovers lead to road defeat to East Central, 36-13

ADA, Okla. – SWOSU made their first trip to Ada to face in-state rival East Central since 2010 on Saturday but it was not a pleasant visit as the Tigers took advantage of five Bulldog turnovers to defeat the SWOSU 36-13. The loss extends the Bulldogs current winless streak to five games and drops SWOSU to 2-6 on the year.

ECU scored the first 24 points of the game and never looked back, converting a fumble by starting quarterback Klark Ashmore into a field goal in the first quarter to make it 10-0 less than 10 minutes into the game. Ashmore then led the Bulldogs on an 11-play drive that reached the red zone before an interception in the end zone put the ball back in the hands of the Tigers.

JoJo Snell made SWOSU pay for the error, taking a handoff on the ensuing play 80 yards for a touchdown and helping ECU take a 17-0 lead to the second quarter. Tanner Thompson gathered a takeaway for SWOSU on an interception early in the second quarter, but the

Bulldogs following drive went 3-and-out under the direction of Tim Morovick, making his first appearance at quarterback since the Arkansas-Monticello game on September 27.

A 60-yard punt by Dalton Jackson backed the Tigers up to their own 10-yard line, but they would put together a 10-play, 90-yard drive that was capped off by a 59-yard touchdown pass that completed building the Bulldogs 24-0 deficit.

SWOSU again went 3-and-out on their next drive, but were bailed out by ECU when Brad Davis muffed the following punt by Jackson and Jamarion Rose was there to recover at the ECU 13 yard line.

Karl Hodge cashed in four plays later with a 1-yard TD run that got the Dawgs on the board before the break. ECU took their final drive of the half 66 yards in eight plays and added a field goal, making it 27-7 at halftime.

Defense controlled the third quarter before Morovick led a six-play touchdown drive late in the quarter, calling his own number on the final play, a nine-yard

touchdown run. Jackson's extra point, however, was blocked, leaving the Bulldogs facing a 27-13 deficit heading to the fourth quarter.

The SWOSU defense held ECU 3-and-out on their first drive of the fourth quarter, but another turnover ended any chance of a comeback for the Bulldogs. Facing 3rd and five from their own 24, Morovick's pass was picked off by Jameel Whitney and returned 29 yards to paydirt leaving the Bulldogs down 33-13 after Devin Benton blocked the extra point. ECU would tack on a field goal late in the game for the final margin of 36-13.

ECU racked up 429 yards of offense against the Bulldogs, including 237 rushing yards, the second-most allowed by the Bulldogs this year. Conversely, SWOSU was held to 269 yards of total offense – their third consecutive game being limited to less than 300 yards – and just 54 yards on the ground. Karl Hodge had 65 yards rushing and a touchdown to lead the way with Matt Farris gaining 15 yards on seven carries.

Morovick was 14-for-25 passing in his return, throwing for 154 yards but also two interceptions. He entered in place of Ashmore, who was just 3-for-10 for 57 yards while also tossing two picks. X'zavious Harrison and Teverick Boyd had four receptions apiece to lead SWOSU.

Austin Loomis led the Bulldog defense with a career-best 12 tackles while Conner Bays added 10 and Tanner Thompson came through with eight and an interception. Devin Benton and Tyler George each had seven tackles and added tackles for loss, with Benton adding 1.5 TFL to his Great American Conference-leading total.

SWOSU falls to 2-6 on the year and the Bulldogs are now mired in a five-game losing streak, their longest skid since 2012. The good news for SWOSU is that their next opponent, Southern Nazarene, is the same foe they stopped their last five-game slide against. The Bulldogs and Crimson Storm kick off at 4:00 pm from Bethany next Saturday afternoon.

## Start time changed for men's exhibition against Tulsa on Nov. 8

TULSA, Okla. – Tipoff for SWOSU Basketball's exhibition game on Saturday, November 8, at the University of Tulsa has been moved back one half hour to 4:00 pm due to multiple home events scheduled for the Hurricane that weekend.

The game will be the second exhibition contest for

the Bulldogs – who open up next Tuesday, November 4, by hosting Mid-America Christian – and it will be the first of two games against NCAA Division I foes.

SWOSU will also play at the University of Oklahoma on Tuesday, November 11 with a 7:00 pm tip time

in McCasland Field House.

SWOSU officially opens the 2014-15 season – their second under the direction of Bob Battisti – on November 14-15 at the SBU Classic in Bolivar, Mo., where they will face Southwest Baptist and Lincoln (Mo.).

Such a little thing can sometimes  
cause a big problem.





# BACK PAGE

6	4							
	3	7	2	5		6	8	
2	5		8	1				7
	8	4	6	2				3
	6						9	
7				8	5	2	6	
8				3	2		4	6
	2	6		7	8	3	5	
							2	8

© 2014 KrazyDad.com

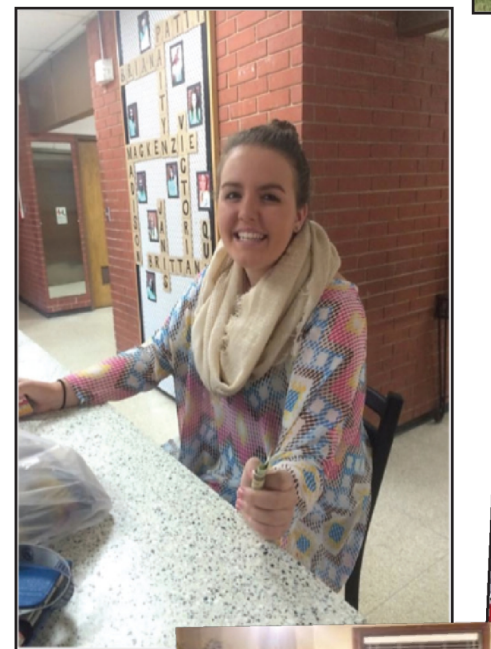
## RES LIFE

Can't Be Missed Events  
By Cody Ewing

### The Day of the Dead

If you like candy skulls, a piñata, and free food come to Neff Hall October 30th at 7:00pm. Celebrate The Day of the Dead with your fellow residents and RA's. Candy skulls will be given out and a piñata full of candy to open. Come and have a good time with friends and other residents. This will be a great beginning to the Halloween weekend.

## PICS OF THE RES LIFE



## Answers

T	O	M	E	S		P	A	G	E		A	C	H	E
A	L	E	R	T		A	A	R	A		F	R	O	M
L	E	A	S	E		S	T	I	R		T	O	T	E
C	O	N	T	E		S	T	A	N	T		E	W	E
						P	O	O	R		H	A	R	D
E	D	E	N			A	R	K			Y	E	W	
N	E	R	O			P	A	Y	S		R	A	D	I
D	E	N	T	I	S	T					M	O	O	R
S	P	E	E	D			E	V	E	R		D	A	T
						W	E	D			E	L	D	
U	P	R	O	A	R			S	L	E	D			
P	I	E	R			A	S	P	I	R	A	T	I	O
E	X	I	T			G	L	E	E		F	O	R	G
N	I	G	H			O	U	R	S		F	L	I	R
D	E	N	Y			N	E	S	T		Y	E	S	E

6	4	8	7	9	3	5	1	2
1	3	7	2	5	4	6	8	9
2	5	9	8	1	6	4	3	7
5	8	4	6	2	9	1	7	3
3	6	2	1	4	7	8	9	5
7	9	1	3	8	5	2	6	4
8	1	5	9	3	2	7	4	6
9	2	6	4	7	8	3	5	1
4	7	3	5	6	1	9	2	8

## resident spotlight

by Abby Odle

### Courtney Buck

Hometown: Harrah, OK

Classification: Junior

Residence Hall: Stewart Hall

Major: Pharmacy



Courtney is in her first semester of Pharmacy School here at SWOSU. On campus Courtney is involved in Fellowship of the Christian Pharmacist, Kappa Epsilon, and APHA. Outside of campus she coaches at Weatherford All Stars. She coaches both cheer and gymnastics for kids ages 18 months to 18 Years. Courtney hails from Harrah, Oklahoma but she has traveled all over. Her dad is in the U.S. Air force so Courtney has lived in 5 different states and 2 different countries. She lived in Germany for 3 ½ years. Her favorite bible verse is "so we fix our eyes not on what is seen, but on what is unseen since what is seen is temporary, but what is unseen is eternal." 2 Corinthians 4:18. Courtney's birthday is coming up on November 18th so stop by Stewart Hall and wish her a special day.

## Meet a Reslife Person

by: Emily Vick

### Maggie Collins

Hometown: O'Donnell, Texas

Classification: Freshman

Major: Kinesiology

Residence Hall: Stewart Hall



Maggie is a new RA at Stewart Hall. She loves to run, play basketball, go on adventures with friends, spend time with her family, laugh, and watch anything to do with the NBA! When asked why she wanted to become an RA she said "I thought it would be a great way to meet new people and impact their lives. It's just a great job that surrounds you with a lot of great co-workers and friends!" Maggie is addicted to applesauce pouches and pepperonis. She aspires to be a great coach, like her dad and brother. If you have a chance to come by Stewart, make sure you meet Maggie.

## Brainstorm By: Anthony Braden

The Brain Only Runs on Glucose

Welcome back to Brainstorm, your one-stop hot spot for in-the-know news. Earlier before you picked up this paper, there was a fight sometime and somewhere about the battle of brains v. brawn. I've come all the way from my dorm room to settle the matter. Today, I declare a tie. While I may be a walking talking hunk of fortified brain matter, even I know the importance of exercise. So while you're pounding out your 20-page essays, juggling work, school, and friends, remember that you need to move your body a little! When you work out, your muscles make a compound called lactate. This compound is made because you can't use enough glucose (sugars) to feed your muscles when you work hard. This lactate gets ground out in your muscles (the pain part of "gain"), but it's also used by your brain when there isn't enough glucose to run. Crazy stuff, but your brain not only works better on lactate, but prefers it over glucose! So when you hear that "the brain runs on glucose", go workout with your friends, and then start in on those assignments. Brains and brawn work together for a better you. Giving you something to think about: Can you describe a color, any color, to a blind person? How about music to the deaf?

ResLIFE Happenings		
What	When	Where
Guardians of the Galaxy	Nov 13 <sup>th</sup> at 8	Fine Arts Center
ResLife Tailgate	Nov 15 <sup>th</sup> at 10am	Milam Stadium
Thanksgiving Break	Nov 25 <sup>th</sup>	Campus Wide
Oklahoma Hall		
Girls Night In	Nov 6 <sup>th</sup> at 8	Ok Hall Lobby
Open Mic Night	Nov 20 <sup>th</sup> at 8	Ok Hall Lobby
Looking Good Under the Hood	Nov 27 <sup>th</sup> at 8	Ok Hall Lobby
Rogers & Jefferson Hall		
Pop Tab Drive to "Scare Away Sickness"	Oct 13-31 <sup>st</sup>	All Halls
Chug! Chug! Chug!	Nov 6 <sup>th</sup> at 7	Rogers Lobby
Movie Night	Nov 10 <sup>th</sup> at 7	Rogers Lobby
Neff Hall		
Day of the Dead	Oct 30 <sup>th</sup> at 7	Neff Hall Lobby
No Shave November	Oct 31 <sup>st</sup>	All Day Registration
Alcohol Awareness	Nov 6 <sup>th</sup> at 7	Neff Hall Lobby
Stewart Hall		
Thanks a Latte	Nov 13 <sup>th</sup> at 7	Stewart Hall Lobby
Inked and Pierced	Nov 20 <sup>th</sup> at 7	Stewart Hall Lobby
Study Tips and Lots of Dips	Nov 24 <sup>th</sup> at 7	Stewart Hall Lobby