



4-23-2019

04-23-2019 High School Seniors Selected for SWOSU President's Leadership Class

Southwestern Oklahoma State University

Follow this and additional works at: <https://dc.swosu.edu/barknews19>

Recommended Citation

Southwestern Oklahoma State University, "04-23-2019 High School Seniors Selected for SWOSU President's Leadership Class" (2019). *THE BARK ARCHIVE 2019*. 120.
<https://dc.swosu.edu/barknews19/120>

This Article is brought to you for free and open access by the The Bark Archive at SWOSU Digital Commons. It has been accepted for inclusion in THE BARK ARCHIVE 2019 by an authorized administrator of SWOSU Digital Commons. An ADA compliant document is available upon request. For more information, please contact phillip.fitzsimmons@swosu.edu.



23 April, 2019



Southwestern
Oklahoma
State
University

High School Seniors Selected for SWOSU President's Leadership Class

Seventeen high school seniors have been selected to the President's Leadership Class (PLC) for 2019-20 at Southwestern Oklahoma State University in Weatherford.

Members of the class and their high schools are:



Colton Adams
Clinton



Braiden (Cache) Anglin
Amber – Pocasset



Alexa Benedict
Burns Flat – Dill City



Lane Dobrovolny
Kingfisher



Autumn Foster
Weatherford



Aiden Green
Canute



Hunter Hampton
Elgin



Brooklyn Hicks
Weatherford



Roberto Mata
Watonga



Abigail Rice
Stillwater



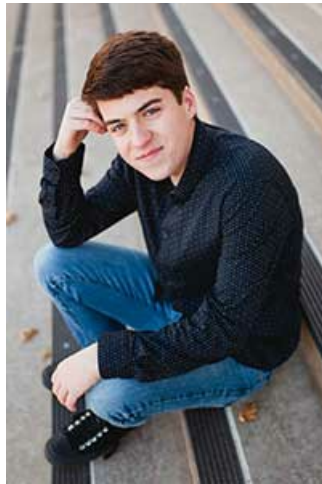
Bentley Shattuck
Durant



Morgan Snowden
Kingfisher



Nadia Sosa
Laverne



Parker Tidwell
Piedmont



Randi Troglin
Mountain View – Gotebo



Blake Wolters
Clinton



Kalyn Yancey
Hydro – Eakly

Each of the class members receives a \$500 per semester scholarship for two years, room scholarship for one year and enrollment in a leadership class that is offered exclusively to PLC students. After completing their second year of the program, students receive a sponsored trip to Washington, D.C. with SWOSU President Randy Beutler.

During the third and fourth years of the program, students serve as mentors for the first and second year PLC members and serve in campus leadership roles, university activities and internships. Students may be eligible for continuing scholarships.

Todd Boyd, who directs the PLC program at SWOSU, said the PLC is a four-year program offered by the university to recognize outstanding leadership qualities and to encourage students in their participation as SWOSU campus leaders and future leaders in Oklahoma. The program is designed to assist in promoting and developing effective academic, social and leadership skills, which is accomplished through direct participation in campus activities, seminars, guest speakers, recruitment and alumni efforts.

SWOSU offers 14 nationally-accredited academic programs—the most among Oklahoma's regional universities. SWOSU has two campus locations and offers nearly 100 undergraduate and graduate degree programs, including a doctorate in pharmacy. Additional information is available at www.swosu.edu.

- [Academics](#) ▶
 - [Administration](#) ▶
 - [Alumni and Foundation](#) ▶
 - [Community](#) ▶
 - [Events](#) ▶
 - [Faculty and Staff](#) ▶
 - [Miscellaneous](#) ▶
 - [Sayre](#) ▶
 - [Students](#) ▶
-

Archive Links

- [2018](#) ▶
 - [2019](#) ▶
 - [2020](#) ▶
 - [Archive](#) ▶
-



Weatherford Campus

100 Campus Drive
Weatherford, OK 73096

Sayre Campus

409 E Mississippi Ave
Sayre, OK 73662

Connect to Us



Contact Information

University/Facility Hours

Campus Map

Give to SWOSU

Shop SWOSU



Directory

Calendar

Apply

GoSWOSU

Jobs@SWOSU



Current Students

Faculty and Staff

Enrollment Management

580.774.3782

PR/Marketing

580.774.3063

Campus Police

580.774.3111



© Copyright 2020 SWOSU