



9-3-2003

Volume 95 Issue 3

Southwestern Oklahoma State University

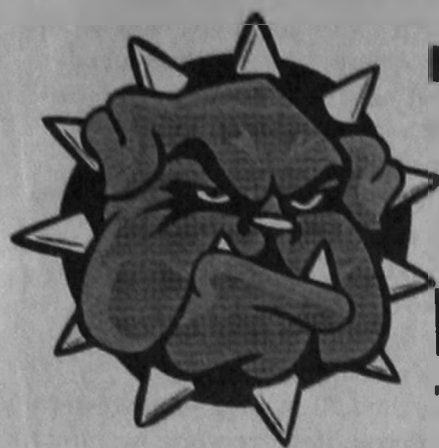
Follow this and additional works at: https://dc.swosu.edu/the_southwestern

Recommended Citation

Southwestern Oklahoma State University, "Volume 95 Issue 3" (2003). *The Southwestern*. 394.
https://dc.swosu.edu/the_southwestern/394

This Book is brought to you for free and open access by the Newspapers at SWOSU Digital Commons. It has been accepted for inclusion in The Southwestern by an authorized administrator of SWOSU Digital Commons. An ADA compliant document is available upon request. For more information, please contact phillip.fitzsimmons@swosu.edu.

go online at
[www.swosu.edu/
students/southwestern](http://www.swosu.edu/students/southwestern)



The Southwestern

The Latest Happenings at Southwestern Oklahoma State University

CAB is back/ p. 3



Back in black/ p. 6



Plyskin time/ p. 9



Vol. 95 No. 3

Wednesday, September 3, 2003

10 pages

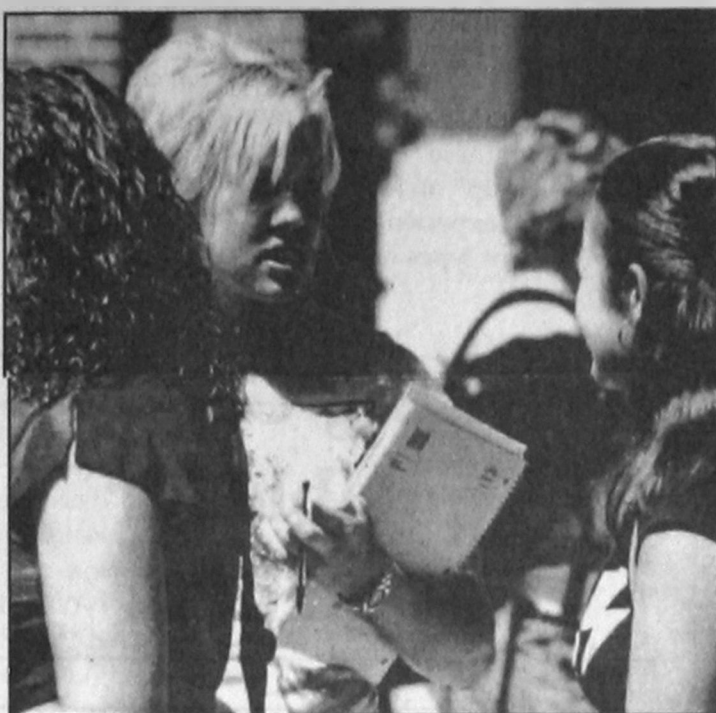
Improvements meet on-campus residents

By Brooke Elliott/
Staff Reporter

Southwestern's residence halls are full of students and full of renovations. Cynthia Groth, director of housing, has a few reasons for the increase in residence halls this year compared to the previous years. Groth stated that the number increase was not only due to more Freshmen, but also to the poor economy, high recruitment, reconstruction and

renovations to the resident halls. Three halls have been newly constructed and renovated. Neff Hall received quite the face lift with paint, new lobby furniture, pool and pingpong tables. As for the female halls, Stewart Hall received new carpet, fans, chandeliers, area rugs and lobby furniture. Oklahoma

(SEE HALLS ON PAGE 2)



Many students attend the organizational fair August 21. The crowd was expected, as the campus is full this year.

PHOTO BY PUBLIC INFORMATION

Many new faces

Freshmen numbers rise

By Buck Guest/
Staff Reporter

The freshmen class increased this year by 5 percent from 2002, and is the biggest class since 1990.

The class is approximately 1,063 students, compared to 1,009 last year.

One factor for the increase could be Southwestern's cost.

"Freshmen are attracted to Southwestern

because of our lower tuition," said registrar Bob Klaassen.

Southwestern's tuition went up 12 percent compared to The University of Oklahoma and Oklahoma State University, which increased by 30 percent and 28 percent, respectively.

Also, Southwestern is closer to home for a

(SEE FRESHMEN ON PAGE 2)

Colleges mix it up

By Latia French/
Staff Reporter

Southwestern has restructured its colleges over the summer to cut administrative costs, according to President John Hays.

There are now three colleges at the Weatherford campus: Arts and Sciences, Professional and Graduate Studies, and Pharmacy. Several departments have changed.

Some departments were affected by the changes. The Health and Physical Education Recreation Leadership Department moved from Arts and Sciences to Professional and Graduate Studies, while the departments of computer science and technology merged.

Dr. David Bergman will continue to serve as Dean of Pharmacy. Dr. Ken Rose, who has been Dean of Arts and Sciences, accepted the position of Dean of Professional and Graduate Studies, but will

serve in both capacities until a new dean is found to fill his position. Provost Bettie Becker said that spot should be filled in September.

This consolidation will decrease administrative costs by approximately \$300,000 per year, Hays said. Since schools around

New lineup

College of Arts and Sciences

College of Professional and Graduate Studies

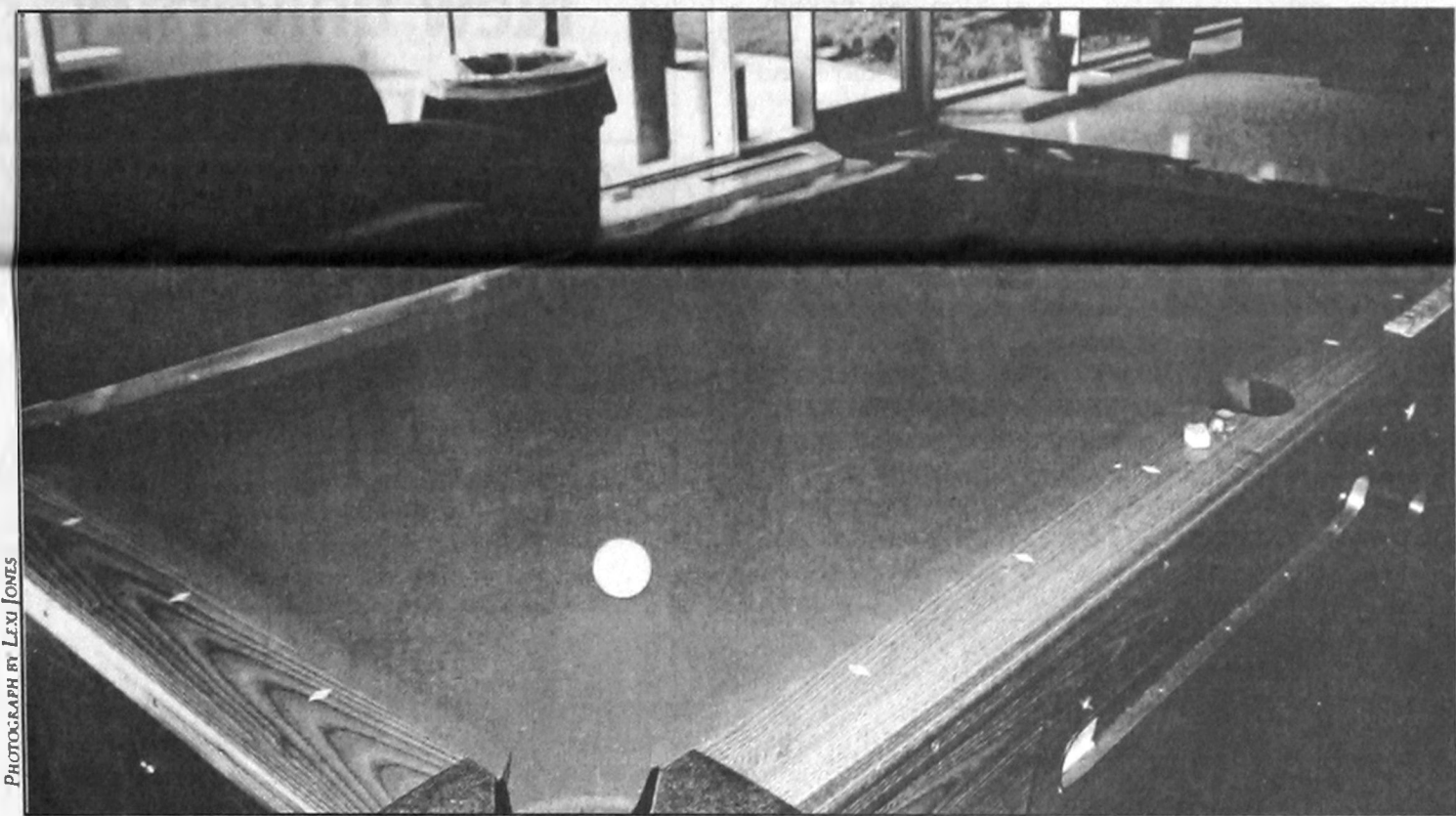
College of Pharmacy

(full lineup on page 2)

the state are already experiencing budget cuts, Becker said that this move was necessary to prevent more drastic measures, such as cutting programs.

Becker and Hays said this is a "transition period" but do not believe these changes will have

(SEE COLLEGES ON PAGE 2)



Students can enjoy the new pool table at Jefferson Hall.

Jefferson Hall residents get entertained

By Alex Jaquez/
News Editor

"Jefferson Hall couldn't be any better," said hall director Matt Bartel.

All halls have been transformed to a homelike environment, but that is just the beginning for what residents in Jefferson Hall can expect to see in the next few weeks.

Cynthia Groth, director of housing, made it possible for Jefferson Hall to be provided with three 27-inch

flat screen televisions that will attract many sports fans.

The televisions will be mounted up within the next few weeks, allowing the students to watch a variety of sports games at one time.

"We are hoping to make Jefferson Hall stand out by providing an incredible entertainment area," Bartel said.

"Throughout the years we have rented a big screen

for all of the major college football games. This has been a very popular activity we do during the seasons. This year, we have chosen to provide the residents with more of what they enjoy participating in.

"We are all very thankful to everyone who has worked on these projects," Bartel said.

Another item provided this semester was a new pool table. This year, the

table will require a small price for each game played. This will pay for future equipment and necessary repairs to keep the table in good condition.

Finally, the halls will add a free drink facility that will be nice for the upcoming winter.

Students will be able to enjoy a nice hot chocolate, cappuccino, or tea without having to leave the halls.



Tabatha Kathol and Jon Matthews will lead a team of students in producing KDOG, a weekly TV news show.

By Emily Schikmmel/
Staff Reporter

A group of students, headed by Jon Matthews, sophomore mass communications major from Dallas, and Tabatha Kathol, senior mass communications major from Guyton, are launching a student-run television program.

The 30-minute weekly news program will cover campus-wide issues concerning students, including sporting events, academics, and changes taking place on campus. It will air on cable channel 20 through a donation of time from Cable Network Advertising.

Students will be in charge of writing stories, reporting, running cameras, editing productions, and there will also be different anchors throughout the semester.

"Our goal is to get the student body interested and more involved," Matthews said.

The program is scheduled to air Thursday at 4:30 p.m. and 6:30 p.m., and run every Thursday thereafter.

Matthews and Kathol hope the show will also be broadcast in the cafeteria on Thursdays at 6 p.m.

They realize they are taking on a huge task.

"We're all learning from each other because it's new," said Kathol. "We just hope to succeed. Hopefully by next spring we'll have reached all our goals."

The students encourage anyone interested, even if they are not mass communication majors, to call Matthews at 772-0020 or Kathol at 772-3475, or attend weekly meetings Thursdays at 4 p.m. in Campbell 211.

Students prepare to air television news program on Channel 20

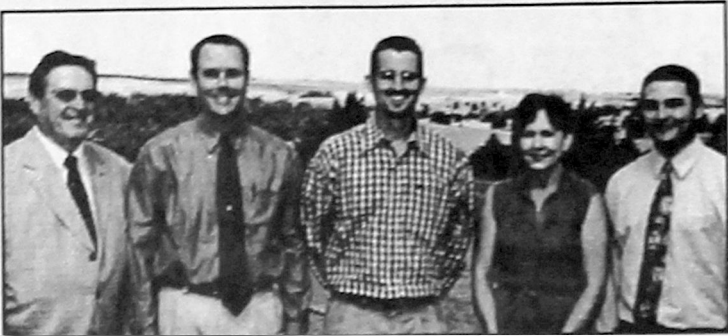
PHOTO BY LEW JONES

New hires expand adventure program

By Nicole Logsdon/
Staff Reporter

Recently, five individuals were appointed duties in Southwestern's Adventure Program. These include Jason Baker, Ryan Haggard, Debbi McFarland, Randy Barnett and Don Nigus. Nigus will serve as the project director and research coordinator for all five sites. These sites exist in Enid, Lawton, Tenkiller, Foss Lake and Cedar Canyon. Southwestern's Adventure Program lasts for a period of six to nine months and is designed for delinquent boys, ages 13-18. These daily activities strengthen positive

behavior change and commitment. Students are evaluated on their progress in the major areas of the program which include: education, basic living skills, substance abuse education, adventure activities, community service, counseling and vocational technical skills training, according to information provided by Nigus. Nigus said there are many reasons the university is sponsoring a state program. He said the program provides opportunities for internships through the HPER Department, offers scholarships for social work, psychology and nursing, allows the



These five individuals have been appointed or reassigned other duties with the Southwestern Oklahoma State University Adventure Program. Don Nigus (far left) is the new project director and research coordinator for all five SWOSU Adventure Program sites at Enid, Lawton, Tenkiller, Foss Lake and Cedar Canyon. Others with new assignments are (from left) Jason Baker, Foss Lake director; Ryan Haggard, coordinator of adventure programming for all five sites; Debbi McFarland, liaison for social work services at all five sites; and Randy Barnett, Cedar Canyon director.

opportunity for research in social work and juvenile justice and creates jobs for students on campus. He adds one of the most important advantages of this program is that it gives education majors who work with these children a "leg-up" on jobs by giving them experience with all different types of children. So how about the future of this program? "We hope to start a program soon that will allow us to work with exceptional children, Nigus said. He also feels that there will be many other doors opening for this type of program and is optimistic of its success.

Halls (continued from page 2)

Hall received the most work. On each level of Oklahoma Hall, the residents have been provided with seating areas, fitted to hold dorm parties, provide a place to watch TV or just relax. Downstairs in the kitchen and lounge area, the Oklahoma Hall residents have received new dinning room furniture and a ping-pong table as well. Another renovation that has been made to Oklahoma Hall is that they have been able to turn a nonfunctional exercise room into a very functional and useful study room. Many hall residents have made the comment, "they wished it felt more like home." With the new renovations that have been made in the residence halls, a more home-like feeling has been accomplished. Groth stated, "Luckily, Southwestern has been successful in providing everyone wishing to live in the residence halls with a room." She added "Throughout the winter season, the dorm facilities will also provide warm beverages and popcorn to help provide a very tasteful environment."

Freshmen (continued from page 2)

majority of students. "Southwestern made my transition from high school to college very comfortable, and financially was a better choice," said David Searcy a freshmen from Tipton. TV commercials and radio spots are frequently seen and heard telling the students, "the focus is you." With smaller classrooms and a full time faculty, Southwestern appeals to prospective students

Colleges (continued from page 2)

any adverse effects on the students. In fact, they see benefits. As the semester continues, the chairs of each department will become directors. According to Becker, "As directors, they will be able to spend more time on student curriculum."

Club Notes

Non-Trads

The Southwestern Non-traditional Students Organization (Non-Trads) will meet at 7 p.m. Sept. 4 in the Skyview Room of the Student Union. Everyone is invited. For more information, call adviser Lisa Boggs at 774-3090.

Sigma Tau Gamma

Social fraternity Sigma Tau Gamma is hosting Rush Week. Events will include a cookout at 7 p.m. on Sept. 8. a poker night on Sept. 9, Rush Night at 8 p.m. in Stafford 104 on Sept. 10, and Pledge Inductions on Sept. 11. For more information, contact Drew Price at 774-8126.

Kappa Sigma

Social fraternity Kappa Sigma is hosting several events for Rush Week. Tonight, a 3-on-3 basketball tournament will be held in Rankin Williams Fieldhouse. It starts at 6 p.m. and costs \$20 for a four-man team. A steak cookout is also scheduled for tonight at 6:30 at the sand volleyball courts. It costs \$4 a student. A greet and meet is scheduled for Thursday at Benchwarmer Brown's from 7 to 9 p.m. An informational meeting will be at 7 p.m. Tuesday in the Stafford Building. This will be the final pledge night for all qualified..

Writing Center Available for Students

Public Information

Southwestern Oklahoma State University students needing help with a paper, speech or presentation have available to them a writing center on the Weatherford campus. Beginning September 2, the SWOSU Writing Center will be open in Room B3, located in the basement of the Al Harris Library. Dr. Valerie Reimers said trained student writing consultants will be available throughout the day and into the evening. Hours will be 8 a.m. until 8 p.m. Mondays through Wednesdays; 8 a.m. until 7 p.m. on Thursdays; and 8 a.m. until 4 p.m. on Fridays. For morning sessions after 9 a.m., call 772-6611 extension 4434 to confirm tutor availability. Students can also e-mail papers at any time to swwctutor@student.swosuedu

New university structure

College of Arts and Sciences

School of Arts & Humanities:

Art
Language Arts
Music
Social Sciences

School of Mathematics & Sciences:

Biology
Chemistry and Physics
Mathematics

College of Professional and Graduate Studies

School of Allied Health:

Allied Health
Athletic Training

School of Nursing

School of Education:

School Service Programs
Elementary and Secondary Education

School of Behavioral Sciences:

Psychology and Social Work
Health and Physical Education
Recreation Leadership

School of Business

School of Computer Science and Technology:

Computer Science
Technology

College of Pharmacy

Pharmacy

College of Associate and Applied Programs

All Sayre Campus Programs

Mendel Attends Geospace Analysis Institute

By Public Information

Southwestern Oklahoma State University student Rodna Mendel of Weatherford spent two weeks of her summer observing an amazing and impressive innovation. Mendel was one of 16 students selected to receive a \$1,426 scholarship to attend the Geospatial Summer Institute at the University of Oklahoma. Eight Oklahoma universities sent participants to the institute. Hosted by the OU Center for Spatial Analysis, the institute centered on the use of geospace analysis. Using remote sensing and transmissions from seven satellites, the students designed a parking lot map. "This technology is amazing," Mendel said. "We were told that it can be used to read one particular license plate in downtown New York City." Use of this technology is unlimited in the near future. A Ponca City planner is interested in using geospace analysis to locate all water lines in Ponca City. One student is already using the technology to make a model of Oklahoma City. And, there are plans to update future 911 maps for the various cities in Oklahoma. Dr. Harpal Dhillon, chair of the SWOSU Computer Science Department, recommended Mendel, a computer science major, for the institute. Her award was made possible from NASA's National Space Grant College and Fellowship Program with the Earth Science Grant Initiatives.



THE SOUTHWESTERN STAFF

Editor-in-Chief.....Lexi Jones
News Editor Alex Jaquez
Features Editor Donnita Stewart
Sports Editor Philip Bussey

Webmaster Philip Bussey

Advertising manager Devin Huber
Advertising staff Nina Saunders, Amber James

Photographers Philip Bussey, Donnita Stewart,
Nina Saunders, Joy Lierle

Writing Staff..... Jacki Banks, Philip Bussey, Brandon Drumm, Brooke Elliott, Latia French, Buck Guest, Amber James, Lacey Johnson, Lexi Jones, Kimberly Keller, Ashley Kelley, Nicole Logsdon, Nadlin Mendoza, Mike Rodgers, Emily Schimmel, Clay Simmons, John Starks

Editing Staff..... Michael Bergin, Philip Bussey, Coker Philip, Mitchell Craiger, Latia French, Buck Guest, Lacey Harms, Alex Jaquez, Lexi Jones, Kin Keller, April Larson, Nicole Logsdon, Tahiya Hahub, Melissa Mayfield, Kenzie Mol, Ryan Patterson, Emily Schimmel, Breanna Schneberger, Elizabeth Stafford, Zach Sullivan

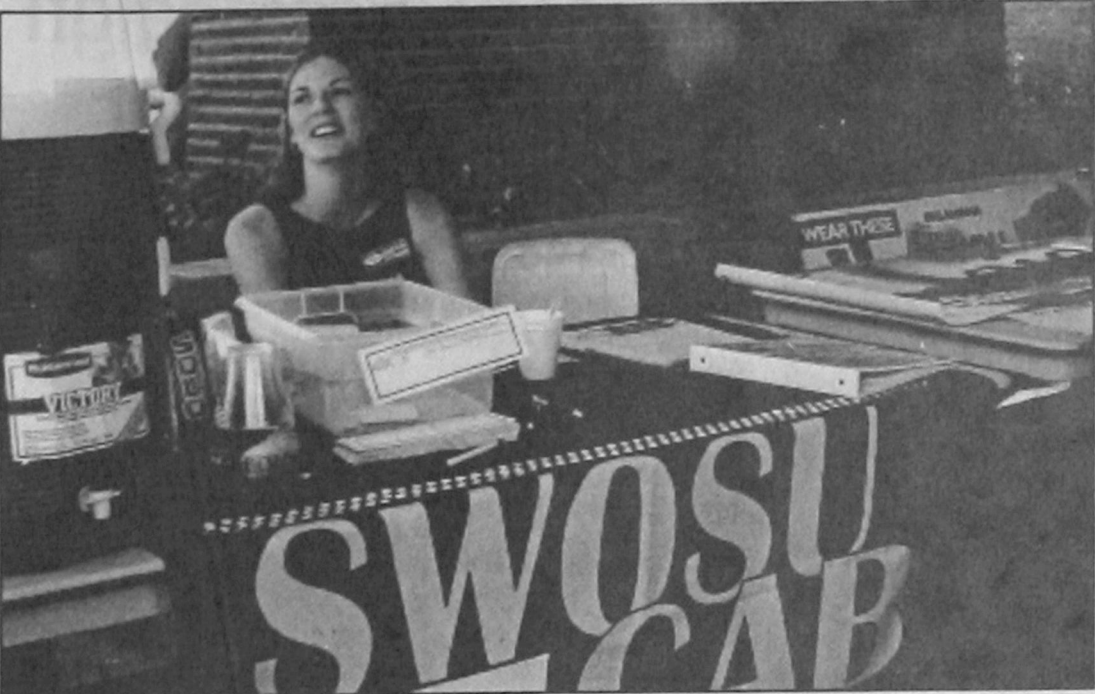
THE SOUTHWESTERN is the student newspaper of Southwestern Oklahoma State University. It is published every Wednesday during the fall and spring semesters, except during holidays and finals week. Students in the editing class serve as section editors. The editorial board meets every Tuesday at 2:00 p.m. in the journalism lab, Campbell 211.

THE SOUTHWESTERN encourages comment from the student body, faculty, and administration in the form of letters to the editor. All letters must include a name for consideration; however, the name may be withheld upon request. Letters should be sent to: The Southwestern, 100 Campus Drive, SWOSU, Weatherford, OK, 73096; 774-1065.

The opinions expressed within signed editorials are the opinions of the writers; the opinions expressed in unsigned, boxed editorials are the opinion of the staff. Neither is necessarily the opinion of the university administration, staff or faculty.

the **Hot** MIX **95.5**

The best hits of the 80s, 90s and today



Brandi Martin operates the Collegiate Activities Booth at the Organizational Fair last week. Martin, who chairs the organization, is hoping CAB's second year is as successful as its first.

Activities Board enters second year

By Lexi Jones/
EDITOR-IN-CHIEF

After a successful first year, the Collegiate Activities Board is planning more events for students.

"Now that people know what we are hopefully even more students will participate," said Brandi Martin, CAB chair.

Last year the board brought in entertainment such as Jack White, a pool shark who taught pool tricks, comedian Michael Dean Ester, and an M-4 flight simulator.

Other events that were more student interactive were a coffee house featuring campus talent, a "Let's Make a Deal" game show, a talent show, a Twister tournament, Bingo night, and a "One

Hit Wonder" event where students made their own CDs and put their picture on the CD case.

This semester, a "Blast from the Past" event is in the making. This event will include old elementary school games such as dodge ball and kickball, a giant inflatable Twister game and trivia games such as Think Fast.

Plans for comedian Joel Chasnoff are also in the making with the date not exact but probably October or November.

There will also be another coffee house the week before finals.

According to Martin, the "Bulldog Blitz" talent show and the "Hey SWOSU, Let's Make a Deal" game show were the most successful and

will be seen again this year.

If students are interested in being a member of CAB, they can contact Brandi Martin in Stafford 214 or call her at 774-3767.

The board has 12 members and is taking applications. All applicants will be interviewed and a select few will be chosen for the board.

CAB is looking for a very diverse group of students to meet the desires of all SWOSU students.

Shelby Higdon, a second year CAB member, said, "It's important for the students to understand that anyone can be involved with CAB."

Tuition jumps to new levels

Southwestern rises price 12.9 percent

By Kim Keller/
STAFF REPORTER

The latest increase on student tuition is caused by many factors.

One major reason for the increase is the shortfall in state finances from last year.

Raising the tuition is not how the university wanted to address loss of funding from the state, but in order to compete with other Oklahoma universities, a tuition increase was necessary.

The 12.9% increase is "reasonable and affordable," said Brain Adler, director of public information. By raising

the tuition, "Southwestern is trying to do the right thing."

Although it is an increase, it is a lower percentage than the primary Oklahoma universities, the University of Oklahoma and Oklahoma State University.

The increase was made principally to the tuition itself, although there was a \$2 accumulation to the student activity fee, which was agreed by students. Adler said that Tom Fagan, vice president of administration and finance, and Dr. John Hays, Southwestern

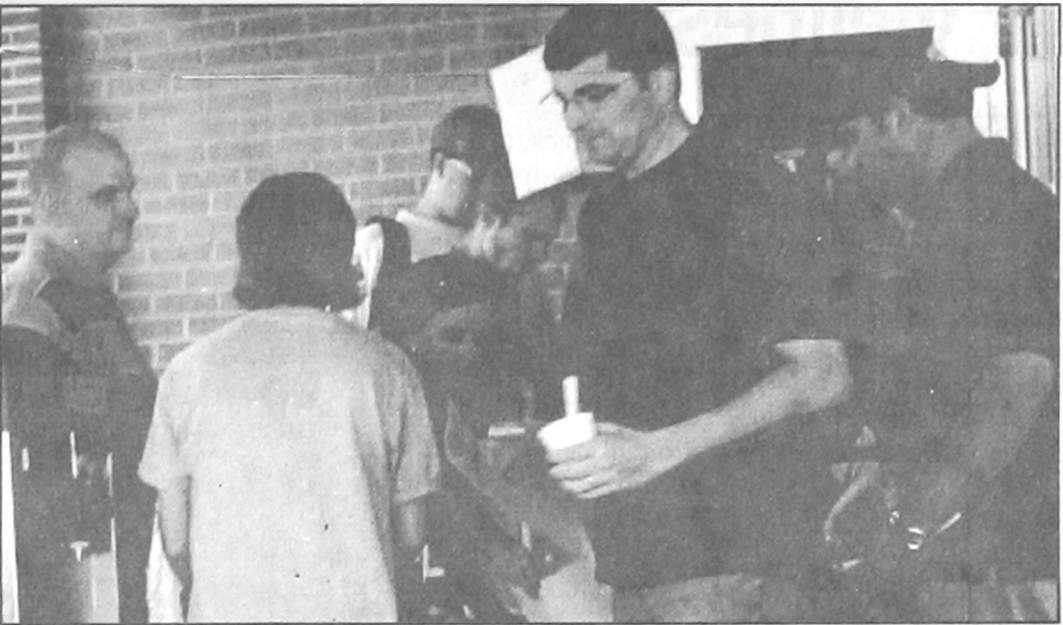
president, anticipated a substantial shortfall in state funds.

Hays conducted public assemblies at both Weatherford and Sayre, campuses receiving student's thoughts of the rise before it was in effect.

Some individuals were concerned about enrollment numbers diminishing due to the increase of tuition. However, since the rise was lower than surrounding universities and a rise in interest in grants and student loans, Southwestern's enrollment increased for the third straight year.

Crowded booths

PHOTO BY DONNITA STEWART



Students flock around booths such as Legacy Bank's to pick up goodies and information during last week's Organizational Fair.

August Employee Spotlight



By Public Information

Charlene Killgore, Pat Pope and Mindy Schmidt are the employees in the spotlight at Southwestern Oklahoma State University in Weatherford during the month of August. Killgore has been employed at SWOSU for one year. She is the administrative assistant for the Division of Nursing. She and husband, Rondal, have two daughters and one son. She enjoys gardening, crafts, reading, cake decorating, singing in the church choir, working with college students and fellowshiping with international students in her home. She has served on the mission field in Brazil for four years. Her husband is pastor at Emmanuel Baptist Church in Weatherford. Pope is an administrative assistant in the School of Education. She has been

employed at SWOSU for two years. She and her husband, Ray, have two grown children-daughter Tara Reider (husband - Billie) and one grandchild, Kelli; and son Clay Pope, a student at SWOSU. Her hobbies include taking care of Kelli (7 months) and riding horses. They attend First Baptist Church in Weatherford. Schmidt is a lifelong Weatherford resident. She has been with SWOSU for one year and is employed in the Registrar's office as an enrollment clerk. She enjoys reading, playing the piano, singing and attending her friends' weddings. Mindy is a member of Campus Crusade for Christ. She attends Christ Community Church in Weatherford. The spotlight program is sponsored by the SWOSU Support Personnel Organization.

THE MARKET MAKES CORRECTIONS. BUT WOULDN'T IT BE NICE TO BE RIGHT IN THE FIRST PLACE?

When the market says you're wrong, well, there's no arguing. That's why choosing the right financial partner can help you in today's volatile market. Contact us to learn more about our retirement system and complete range of investment and savings options. It's the right decision.

TIAA-CREF.org or call (800) 842-2776



Managing money for people
with other things to think about.™

RETIREMENT | INSURANCE | MUTUAL FUNDS | COLLEGE SAVINGS | TRUSTS | INVESTMENT MANAGEMENT

TIAA-CREF Individual and Institutional Services, Inc. and Teachers Personal Investors Services, Inc. distribute securities products. For more information, call (800) 842-2733, ext. 5509, for prospectuses. Read them carefully before investing. © 2002 Teachers Insurance and Annuity Association-College Retirement Equities Fund (TIAA-CREF), 730 Third Avenue, New York, NY 10017



Plans for a wellness center include fitness training areas, running track, weight room, classrooms, staff nurse offices and other offices.

Campus prepares for wellness center

By JACKI BANKS /
STAFF REPORTER

Plans for the Wellness and Recreation Center approach final stages with expected ground breaking in mid Oct. or the first of November. Workers will complete construction over 18 months in 3 phases.

Phase 1 will include bulk of the building. Phase 2 will entail the east wing, while Phase 3 will be the west wing.

"Hopefully, Phase 1 and 2 will be completed with the first wave of available funds," said Physical Plant Director, Rick Skinner.

Designated funds for this facility will not hamper the availability of funds.

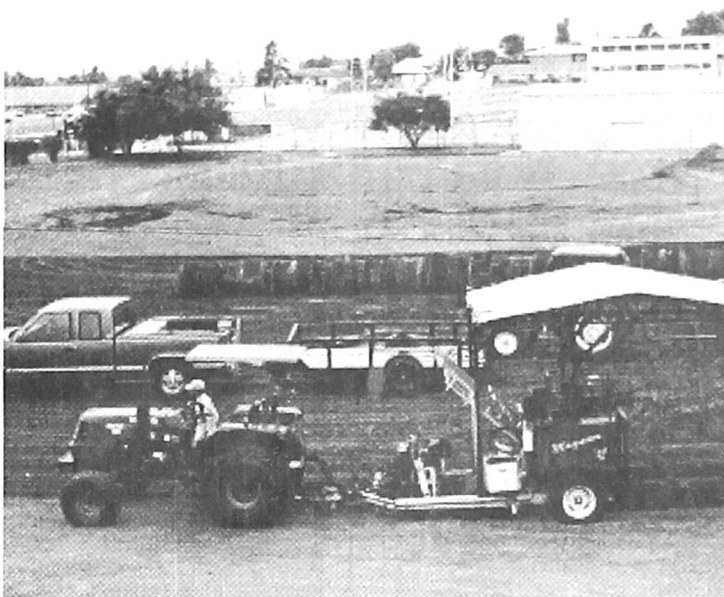
The wellness center will have intramural facilities, a

running track, cardio vascular equipment, wellness area, weight room, classrooms, staff nurse offices, and air-conditioning.

"The location is great, because it is centrally located between the football field and Parker Hall," Skinner went on to say, "Parker Hall will be modernized student housing. It will be a showplace where everyone will want to live and will be right next to the wellness center. It will beautify the northwest corner of our campus."

Now, students can workout at the Rankin-Williams Field House.

Available to all students is a cardio vascular workout



Workers make progress in the development of wellness center.

room located at the west end of the small gym. Besides the gyms and workout room, there is a swimming pool. The pool is open according to the schedule posted outside Mr. Perkin's office. Kelli Litsch, recently told her Wellness Concepts class the pool is "open in the evenings, except for Monday nights

when they have Scuba Diving classes."

The newest facility, finished last spring, is located between the outdoor tennis courts and the field house. This houses weight lifting equipment. Kelli Litsch let her class know that "When the door is unlocked, there is someone on duty."

Promotion campaign wins state awards

By LACEY JOHNSON /
STAFF REPORTER

Southwestern won awards at the Oklahoma College Public Relations Association's annual conference held in Tulsa this summer.

According to Brian Adler, director of public information, "The OCPRA has this contest every year, and Southwestern has won lots of awards over the years."

This year Southwestern tied with Northeastern State with six awards. Oklahoma State University had the most awards, winning 11. There were 339 entries in 24 different categories this year.



The "Focus is You" campaign, which includes this photograph, won several awards at a recent conference.

Southwestern brought home two first place awards. One was received in the television advertising category for the university's "SWOSU-The Focus is You" campaign. Southwestern also won first for a three-color poster design, last fall's Panorama program that featured a cloning debate.

Southwestern received second place in the "before and after" category for a letterhead design. The university also received second places in the radio and print advertising categories. Each featured "The Focus is You" campaign, which was a joint effort between Southwestern and Brainworks Advertising.

A news story featuring Miss Southwestern finishing first runner-up at the Miss Oklahoma Pageant received an honorable mention award.

Adler contributes Southwestern's success at the conference to "a lot of people on campus worked together on these projects. [There were] a lot of departments and offices involved."

ALL CREATURES
ANIMAL HOSPITAL & LASER CENTER
Tom Cox, DVM

- Indoor and outdoor boarding facilities. Indoor is temperature controlled. Fenced yard to run and play in.
- We provide care for all pets
- Annual boosters and physicals
- Equine and bovine care

SHOW US YOUR SWOSU STUDENT ID AND RECEIVE A DISCOUNT ON SERVICES

Remember to call 774-2915 for your pet care needs
1/2 mile east of I-40 and Highway 54

Bartender Trainees Needed

\$250 a day potential/bartending
Local positions available
1-800-293-3985 ext. 162

The Rusty Nail Hair Styling

Service for the Whole Family

Monday, Wednesday - Saturday
Closed Tuesday & Sunday

(580) 772-3700

Owner/Stylist
Randy Sehi

522 N. State
Weatherford, OK 73096

Maytag Laundromat



- * 4 sizes to fit your needs
- * Clean, pleasant atmosphere
- * T.V., video games and snacks
- * Attendant

New Hours

Monday-Saturday 8a.m. - 9p.m.
Sunday 1p.m. - 9p.m.

The latest in laundry equipment
222 E. Main, Next to Sonic

TOMMY JEANS
TOMMY RULES!



It's all cool for school... tees, knit and woven shirts. M-XL. 22.00-49.50.
Jeans. Waists 29-38. 39.50-59.50. Young Men's Sportswear.

PALAIS ROYAL

30B29017P1/4Pg.B 08/27/03 1/4 Page (5" x 10.5") B&W ROP MN
Palais Royal Wendy Tull / K. McLemore / A. Garrote

Kappa Sigma Forming Chapter

A new social fraternity, Kappa Sigma, is forming on the Southwestern Oklahoma State University campus in Weatherford. Tony Hudgins said several upcoming rush activities are planned September 3-10.

A three-on-three basketball tourney will be held Wednesday, September 3, at 6 p.m. in Rankin Williams Fieldhouse. Cost is \$5 per member. Also, a steak cookout is also planned at 6:30 p.m. at the nearby sand volleyball courts. Cost is \$4 per student with an ID or \$5

without. Kappa Sigma will have a meet and greet function at Benchwarmers on Thursday, September 4, from 7-9 p.m. An informational meeting will be held Tuesday, September 9, at 7 p.m. in the Stafford Center. This

will be the final pledge night for all qualified students. KS's night of champions is planned for the evening of Wednesday, September 10. Additional information is available by e-mailing Hudgins_t@yahoo.com.

Communityspotlight... Hall's IGA

By Lexi Jones/
EDITOR-IN-CHIEF

Maybe it's in his blood. Greg Hall, owner of Hall's IGA, has been in the food industry for years, as was his father. Growing up Hall knew that eventually he would like to own a grocery store. Hall graduated from college and worked in sales in Edmond and also for the Nestle Company where he learned about marketing, business and people. He and his wife moved here two years ago and have a one-and-a-half-year old daughter. "My wife and I love living in Weatherford and want to raise our family here," He also said, "We love the atmosphere that comes with living in a college town."

Expanding their store in the future is a possibility but they plan to reside here in Weatherford. Hall has proven to be a school spirited sponsor to many SWOSU clubs and organizations. This year he sponsored the football, soccer, baseball and women's basketball schedules. He allows numerous organizations to hold bake sales at his store, donates to many clubs and organizations, gives 10% off to SWOSU students every Thursday, and has a refund-for-your-receipt program that proved to be very successful last year. Hall will allow organizations to decorate a box and place it by the store office. Customers put their receipt in the box of their choice. Hall will then give that organization 1 percent of the total on the receipt. Over time this really adds up. Last year Hall wrote a check for approximately \$4500 to the Weatherford Public

PHOTO BY DONNITA STEWART



Greg Hall (left) socializes during SWOSU's annual faculty and staff picnic.

Schools. Hall also hosts many events for the entire community. Last year he brought in University of Oklahoma athletes, Josh Heupel, Quinton Griffin and Hollis Price to sign autographs at his store. Hall was also a corporate sponsor along with Wright Radio, McDonald's, Bank First, York Ford and Budweiser for the 1965 Mustang car give-away. Hall's IGA not only caters

to the wants and needs of many SWOSU students but also to the entire community of Weatherford. Knowing that Hall's is the only place in town to get Krispy Kreme doughnuts, and provide a full selection of beer, meats and even a bakery, it's understandable why this week's community spotlight is on Hall's IGA.



Lewis Black

Campus to get Black comedy

By Mike Rodgers/
STAFF REPORTER

Southwestern is gearing up for its annual Panorama events, and kicking things off this year is comedian and television personality Lewis Black who will be performing at 7:30 Sept. 9 in the Fine Arts Center. Tickets are \$5 for students and \$15 for non-students. They can be purchased in the Public information office, Administration Building 205, or the Business Office, Administration Building 109. Black is an award-winning comic who has opened for performers such as Chicago and Harry Belafonte and starred in his own half-hour specials for Comedy Central. He is most known as a regular commentator on The Daily Show. He is recognized most for his vitriolic take on modern society and particularly agitated delivery. Black, who won Best Male Stand Up by the American Comedy Awards in 2001, is sure to be a great addition to the Panorama line-up

Bulldog's Bark

How do you feel about the tuition hikes?



Drew Henson
Soph. undecided
Midwest City

"I am not very pleased with the decision. School is already an expensive burden. We did not need any further costs."



Grace Schickedanz
Soph. business
Fargo

"I don't really think it's fair because some of us can't afford it."



Matthew Goeringer
Soph. communication
Bessie


"I didn't like it. I received three letters saying tuition is being raised and it complicated my scholarship."



Megan Hiebert
Soph., speech pathology
Meno

"They built the clock tower for no reason, and then they raise our tuition."

game, set, match.
OR AT LEAST A DATE
for Saturday night.



SWOSU USA Team Tennis
Fall 2003
1 FREE T-shirt
1 Weekly Prizes
1 End of Season Party

Sign up at the Intramural Office in the HPER Building

USTA.com

USA TENNIS GO PLAY

Parents Weekend Special Event

Fri & Sat Only!

20% off
STOREWIDE!
2 Days
Only!

Come join the party!

THE K closet

Register with us FREE (5) \$500 Scholarships



205 West Main
Weatherford
1-550-772-5073

Freddy vs. Jason

It has been a while since Hell has walked on Earth, but thanks to director Ronny Yu, Hell is back in the form of the movie *Freddy vs. Jason*. Four years after being killed by his daughter, Freddy Krueger (Robert Englund) rests in Hell, or so everyone thinks. Freddy is back and ready to kill. The children living in Springwood must fear him in order for him to gain enough strength to kill. However, the parents of Springwood have been giving the children dream suppressants ever since his last reign of terror. Freddy uses dream manipulation to bring Jason Voorhees (Ken Kirzinger), the hockey masked serial killer from *Friday the 13th*, to Elm Street. Freddy appears to Jason as Jason's mother, Mrs. Pamela Voorhees (Paula Shaw II) and tells him that he has to go to Elm Street and release the kids from their parents' control and from the dream drug. Freddy wants the town to fear him so that he can manipulate their dreams and kill them. Things take a big turn when Jason ends up going on his own killing spree, instead of just making the children fear again. This makes Freddy very angry. But, Jason is sent over the edge when he realizes that Freddy manipulated him. So, when the teenagers of Springwood; Will (Jason Ritter), Lori (Monica Keena), and Kia (Kelly Rowland); realize what's going on, it's up to them to get Jason back to Camp Crystal Lake and kill Freddy once a for all. The plot was easy to follow, but weak in some areas. There were a lot of flashbacks and memories. But, tying the flashbacks and memories into a new script were helpful to those who have never seen Freddy and Jason

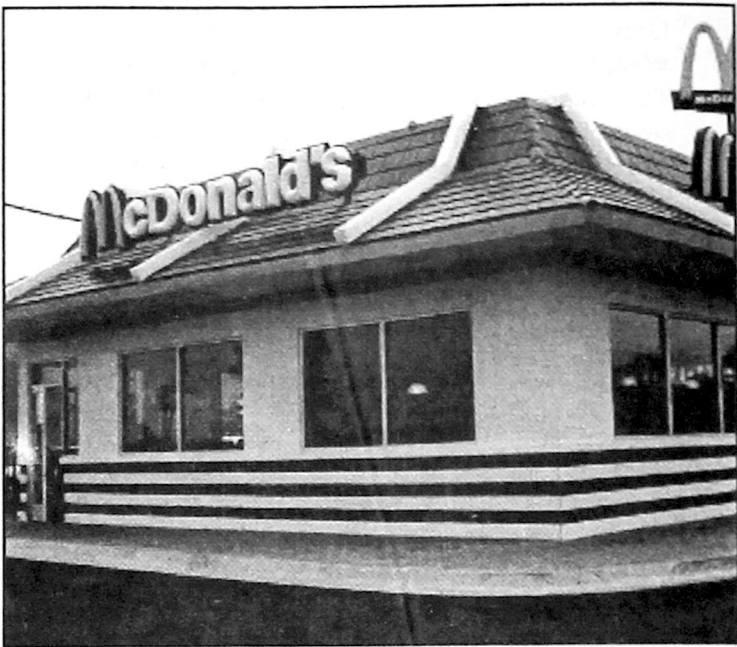


movies before. The plot was effective and kept the audience on the edge of their seats. The screenplay by Damian Shannon and Mark Swift is a creative one that successfully brings the characters together. There was a lot of dialogue during the course of the movie, however it was needed in order to know what was going on, the characters had to explain everything. The excessive talking left little time for suspense, and suspense is what the audience wants when watching a horror movie. In some aspects the script is poor, but in all it was fitting to the movie. The special effects could have been more realistic, at least the blood parts. When a person is stabbed, blood does not squirt out of their body. Instead, it oozes, unless of course it is a main artery. But director Ronny Yu had everyone squirting ketchup, whether they were being stabbed in the chest or running around with their heads cut off. A few scenes were extremely memorable. One is where Freddy and Jason are fighting through a waterfall, yet neither of them can cross it. Another is when Freddy uses Jason as a pinball, bouncing him off the pipes of Krueger's boiler room. Now that is entertaining. Ronny Yu knew his stuff and made the effects a big part of the movie. The main thing wrong with the effects was all the fake blood, it only added to the humor of the movie. It does not matter how many horror movies are made or how many sequels the movie gets, true horror movie fans will always come back for more, especially for a movie with Hell's two most important horror titans. *Freddy Vs. Jason* is yet another movie that can be added to the *Nightmare on Elm Street* and *Friday the 13th* movie collections. *Freddy Vs. Jason* is the type of movie that can be humorous or frightful. Overall, this sequel was a well thought out and directed movie. It brings the audience to the edge of their seats and brings them a little humor. As do all movies it has serious moments, but most importantly, it leaves movie patrons wondering, "Will this saga ever come to an end?"

--Ashley Kelley

RESTAURANT REVIEW

new McDonald's



The new McDonald's puts off an aura of welcoming. Just step up to the counter, and right away a friendly employee greets you with a warm smile. Within minutes you have exactly what you ordered, plus money left over and are sitting down eating hot food that tastes fresh. No \$10 meals here, folks. The staff is most friendly, and the entire restaurant sparkles with cleanliness. I was really impressed when I went into the restroom. Wow, is this McDonald's? Very nice! Overall, I must say thanks for the new McDonald's. However, if I had any complaints, it would be that there's no play area for the kids, and the doors may be difficult to open for the elderly and disabled. Other than that, I give the McDonald's experience a thumbs up.

--John Starks

SWOSU...

Are these the best, strangest or calmest of times at Southwestern. Judge for yourself. Here's a look back at some headlines from *The Southwestern* this week in years past during

1924:
Southwestern's enrollment was 556.

1974:
Lily Tomlin performs at Southwestern.

1943:
Three seniors honored as being war widows out of several students from WWII.

1996:
Lack of funding terminated foreign exchange program.

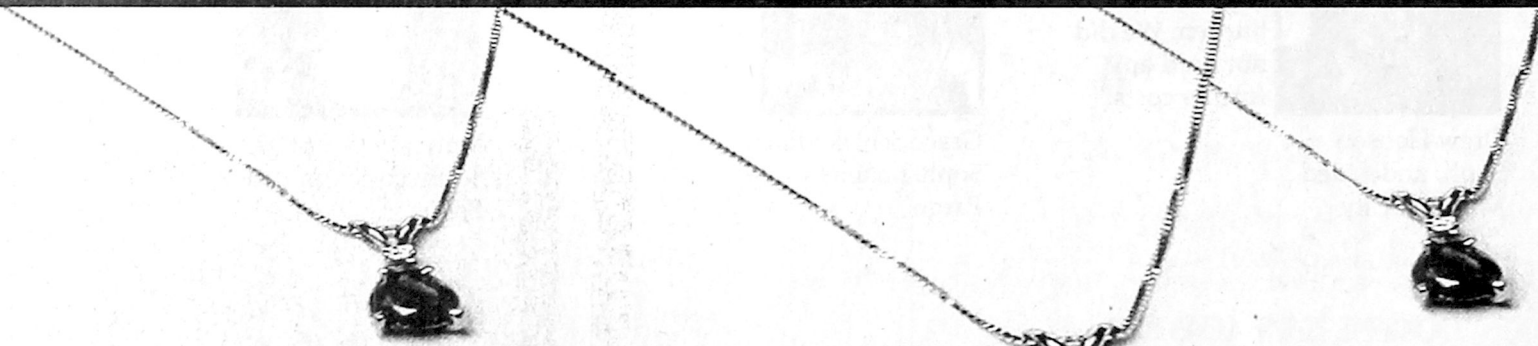
next week at SWOSU

- Sept. 4 -- Deadline for Homecoming Float Allocation Program - ADM 205
- Sept. 6-7 -- Southwest Festival of the Arts at Means Park
- Sept. 9 -- SWOSU American Heart Walk Kickoff Luncheon - CFC Noon
- Sept. 10 -- SGA Meeting and New Senator Installation - STF 104 6 p.m.
- Sept. 11 -- Miss Southwestern information meeting -- STF 204 4 p.m.
- Sept. 13 -- Parent's Day

*Courtesy of weather.com

SWOSU 7-day Forecast

Wed	Thur	Fri	Sat
92°/62°	89°/63°	94°/65°	97°/67°
Sun	Mon	Tue	
94°/64°	93°/64°	94°/66°	



Under \$200 Choice of the Month ~
\$165 Gemstone Pendants
(your choice of Sapphire, Emerald, or Ruby)*

SAPPHIRES, EMERALDS AND RUBIES – OH MY.

When you give the gift of fine jewelry, you just know you're going to wow her. With Kelley Jeweler's Under Two-Hundred Choice of the Month, it's easy to create that kind of excitement, any time of year. With hand-selected jewelry and gift ideas guaranteed under \$200, Kelley's Under Two-Hundred Choice of the Month is great for birthdays, anniversaries, or just to let her know you're thinking of her. So if you just want to be nice, at an extra-nice price, check out Kelley Jeweler's in Downtown Weatherford. When she sees it's from Kelley's, she'll know you did something right.

Kelley
JEWELERS
Downtown Weatherford

* Sizes shown are actual size.

1-800-533-4380

www.kelleyjewelers.com

Just One Hour West of Downtown OKC on I-40

SWOSU: Calendar of Events September

SUN

MON

TUES

WED

THUR

FRI

SAT

1
HOLIDAY
CAMPUS CLOSED

2
8 AM - 5 PM
Senate
Elections in
Student Union
1 PM Nursing
Forum CFC
5 PM WSoccer
vs Southern
Nazarene @
Milam Stadium
7 PM MSoccer
vs Southern
Nazarene @
Milam Stadium
7 PM Mayoral
Political Forum
CFC

3
8 AM - 3 PM
Senate
Elections in
Student Union
12:45 PM
Residual ACT
STF 260
3 PM Proposal
Dev Award
Workshop
EDU 204
• Last Day to
Drop a Class
or Totally
Withdraw for a
Refund

4
5 PM Deadline
for
Homecoming
Float
Allocation
Program ADM
205

5
2:30 PM
WSoccer @
Southern CO
Pueblo CO
10 AM
OACRAO
MTG Skyview
Rm

6
7 PM Football
vs West TX
A&M @
Milam
Stadium
• Southwest
Festival of
Arts @
Means-Clark
Park
Cross
Country @
Southern
Nazarene

7
12 Noon
WSoccer @
Regis Univ in
Denver CO

8
12 Noon Chamber
Luncheon @ Mark
Restaurant w/
Mayoral
Candidates
12 Noon
SOSUNSA Mtg
CPP 316
7 PM Community
Healthcare
Initiative CFC

9
12 Noon
SWOSU
American
Heart Walk
Kickoff
Luncheon CFC
7 PM AAUW
Meeting CFC
7:30 PM
Panorama
Event- Lewis
Black,
Comedian FAC

10
6 PM SGA Mtg
& New
Senator
Installation in
STF 104

11
4 PM Miss
Southwestern
Info Mtg STF
201
9:30 AM
Community
Coffee @
Performance
Physical
Therapy

12
8:30 AM-Noon
SWOSU
College Expo
CFC
2-3 PM New
Employee
Hazardous
Comm
Training STF
104
5 PM WSoccer
vs St. Edwards
Milam Stadium
7 PM MSoccer
vs St. Edwards
Milam Stadium
• State Fair of
Oklahoma
Opens Thru
Sept. 28
• BIOBLITZ @
Boiling
Springs State
Park

13
• Parent's
Day
7 AM PPST
Exam CAM
Bldg
8:30 AM - 1
PM Western
Early
Childhood
Conference
CFC
3 PM Faculty
Art Show Art
Bldg
4 - 8 PM
University
Bookstore @
Milam
Stadium
5 PM Lawn
Mixer& Info
Exchg S of
Milam
Stadium
5 PM BBQ
Tailgate Party
S of Milam
Stadium
6:15 PM
Band Concert
S of Milam
Stadium
7 PM Football
vs Bacone @
Milam
Stadium



Burns toast.



Brightens futures.

Some Gifts Just Do More Than Others.

Think about it. Most gifts are pretty unimaginative. A toaster makes toast. A blender just blends. And there are some gifts that no one knows what they're supposed to do.

But give Savings Bonds, and you'll be giving the gift of future possibilities—from a down payment on a car to help with college tuition. With eight denominations to choose from, there's a size for every occasion. You can select the popular Series EE Bond or the inflation-protected I Bond. They're available through most banks, where you work, or automatically through the new Savings Bonds EasySaver™ Plan at www.easysaver.gov.

Call 1-800-4US BOND for recorded rate information, or write to:
Savings Bonds Pocket Guide,
Parkersburg, WV 26106-1328.



For complete information about U.S. Savings Bonds, visit our Web site at www.savingsbonds.gov.

A public service of this newspaper



DAY TRADERS: INQUIRE ABOUT OUR REHABILITATION PROGRAM.

Forget the latest fads. We can show you smart, effective long-term investment strategies that can help you build a solid portfolio. Help is only a phone call away.

TIAA-CREF.org or call 1.800.842.2776



Managing money for people
with other things to think about.™

RETIREMENT | INSURANCE | MUTUAL FUNDS | COLLEGE SAVINGS | TRUSTS | INVESTMENT MANAGEMENT

Lady Bulldogs Fall In Opener 2-0

SPORTS INFORMATION

The Southwestern Lady Bulldog soccer team fell in its season opening match Thursday evening to University of Science and Arts of Oklahoma by a 2-0 score.

The Lady Bulldogs gave up the first goal in the 27th minute and the second goal came at the 64 minute mark.

Freshman Robin Kluck recorded six shots with five being on goal to lead the offensive categories for Southwestern. The Lady Bulldogs had 17 shots to the Lady Drovers nine. Goalkeeper Lindsey Kurtz allowed two goals and recorded four saves in the match.



Midfielder Christine Le takes a shoot during the season opener against the University of Science and Arts.

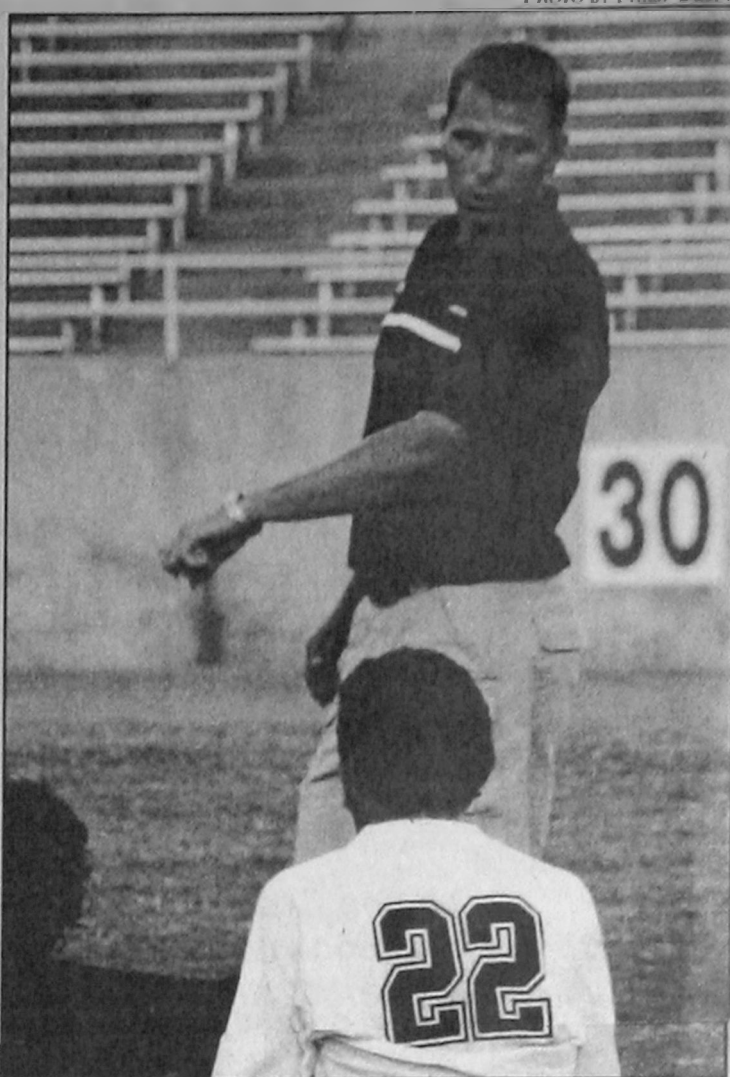
Bulldogs Drop Opener 3-2

SPORTS INFORMATION

The Southwestern Bulldog soccer team lost their season opener Thursday night to University of Science and Arts of Oklahoma by a score of 3-2.

The Drovers struck quickly with a score in the first minute of action. USAO would score again in the 18th minute of play to take a 2-0 lead. Three minutes later, Mark Altland narrowed the margin with his first goal on an assist from Tyler Fagan. In the second period Fagan would tie the match up with a goal in the 67th minute. The Drovers would prove too much for the Bulldogs with a game winning goal in the 83rd minute of the match.

Junior Mark Altland led the offense for the Bulldogs with three shots, one shot on goal, and one goal. Tyler Fagan recorded one shot, one shot on goal, one goal, and one assist.



Head soccer coach Joe Bradley talks with his players during the first game of the season. It is the final season of the men's soccer team due to budget cuts.

Women's Cross Country Team for 2003

PHOTO PROVIDED



(Left to Right): Laci Schumacher, Kishia Sharp, Morgan Brown, Heather Wallace, Jessi Robertson, Carman Zamora, Maria Roman Nose, Lauren Coleman, Coach Adina Peters

2003 Cross Country Schedule

Sept 6 Southern Nazarene	Bethany, OK
Sept 20 Missouri Southern State College	Joplin, MO
Sept 27 Texas A&M Commerce	Commerce, TX
Oct 3 University of North Texas	Denton, TX
Oct 11 Texas A&M	College Station, TX
Oct 18 Chili Pepper Run - University of Arkansas	Fayetteville, AR
Oct 25 LSC Championships *	Portales, NM

SWOSU Students Enjoy On-line "Rat Race"

New and used Rats for pennies on the dollar

Weatherford, OK -- This photo, taken of SWOSU student Fred Feldwisch, confirms that SWOSU students are participating in an on-line "Rat Race."

According to sources, thousands of students like Fred are racing to reserve their textbooks, or "Rats" in their vernacular, at RatcliffesTextbooks.com.

"People have called me a 'lazy Internet pinhead,'" says Fred. "But hey - I'm just a poor college student saving truckloads of money at RatcliffesTextbooks.com."

Tom, Fred's roommate, added, "Dude."

Oklahoma owned and operated, Ratcliffe's Textbooks has the reputation for the best new and used textbooks this side of the Mississippi River.

At RatcliffesTextbooks.com, students reserve textbooks on-line for no extra fee. Students then pick up their books at Ratcliffe's, sometimes without ever waiting in line.



Ratcliffe's Textbooks

724 North Custer • Weatherford, OK 73096
Textbook Hotline: 580 772-3387 • Fax: 580 772-3388
www.ratcliffestextbooks.com



123 Bradley Weatherford, OK
580-774-1859

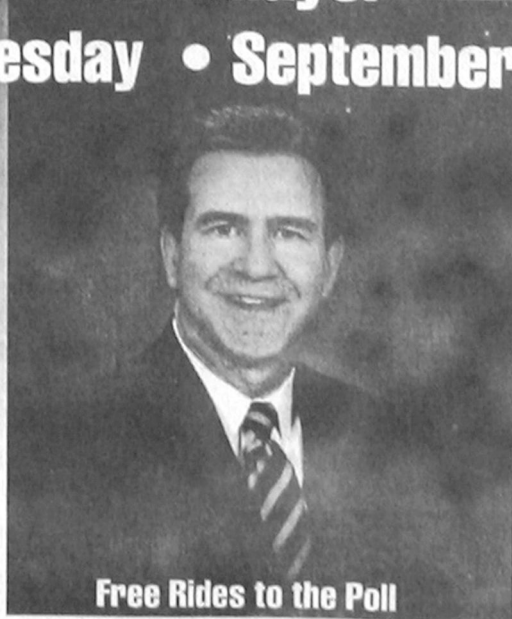
WHY TAN AT PARADISE ISLAND?

- * Tanning is our ONLY business!!!
- * Staff is trained, schooled, certified.
- * Personal attention to your needs-sessions customized to your skin type for optimum results.
- * VHR TANNING available.
- * Great lines of lotions at discounted prices to save you money & get FREE TANS, too!
- * No contracts, no bank drafts EVER!
- * Convenient hours, open 7 days a week.
- * Personal counseling to give you the security of a professional tanning experience-a benefit of our committed service to you.
- * CLEANEST facilities in the area.
- * We take and encourage APPOINTMENTS!
- * Highest standards of service and cleanliness.

DID YOU KNOW that Oklahoma has no laws to govern or regulate tanning beds or tanning salons? That's why you may have greatly differing experiences from one tanning salon to another. We're familiar with national guidelines and we run our business to meet and EXCEED those guidelines. It's our commitment to give you the very best in service because we know that if you have a comfortable experience with us, you'll be back and you'll tell your friends, too! Oh, by the way, we've been around since 1994, AND our package prices are still the same today as they were in 1994!



Vote
MIKE BROWN
for Mayor
Tuesday • September 9



Free Rides to the Poll
Call 772-6343 or 772-4121



2003 Football Preview

Jenkins makes run for records



Photo by Philip Busey

Head Coach Paul Sharp discusses plays with Jimmy Jenkins in recent practice. Jenkins ran for 983 rushing yards and 12 touchdowns in 2002.

By PHILIP BUSEY/
SPORTS EDITOR

Jimmy Jenkins, junior pre-pharmacy major from Watonga, is expected to lead Southwestern's football team as he moves up the ladder of the Bulldogs all-time career rushing touchdowns and rushing yardage charts. Jenkins, a third year tailback needs nine more touchdowns to advance to third place on the touchdown list, surpassing James Hicks, who had 26 touchdowns. Head football coach Paul Sharp wants his offense to get at least 10 to 15 touchdowns on the ground this season.

"Jenkins will probably get the ball on most of those carries," Sharp said. "Jimmy getting the touchdowns needed to move up the list is certainly possible." Jenkins has two years to strive for Charles Hicks record of 4,233 career yards set in 1968-1971. Jenkins, with 1,824 career-rushing yards, needs 453 yards to pass Hagan Battles to move into fifth place. For fourth place, Jenkins would need 493 yards. The tougher challenge for Jenkins this season will be running for the third spot on the career rushing yard list. Jenkins needs to gain 934 yards this season.

Given the way he has performed his previous two seasons, he has a chance. Coach Sharp believes it would be great for him to get the yardage needed this season. However, he said, "Jimmy was getting pretty banged up last year." To make it easier on Jenkins, Sharp will be subbing in Charles Bolds and Beaux Daville to keep Jenkins fresh. Jenkins wants winning to be the most important first. "If the records happen they happen," he said. "I just want to win games first, and do what I can to help the team."

career rushing touchdown list

1. 37, Eric Royal
2. 33, Charles Hicks
3. 26, James Hicks

career yardage list

1. Charles Hicks
4,233
2. James Hicks
3,263
3. Eric Royal
2,757
4. Harold Stinson
2,316
5. Hagan Battles
2,276

According to the *Daily Oklahoman*, Jimmy Jenkins suffered a hip injury in a recent scrimmage and will be out at least six weeks.

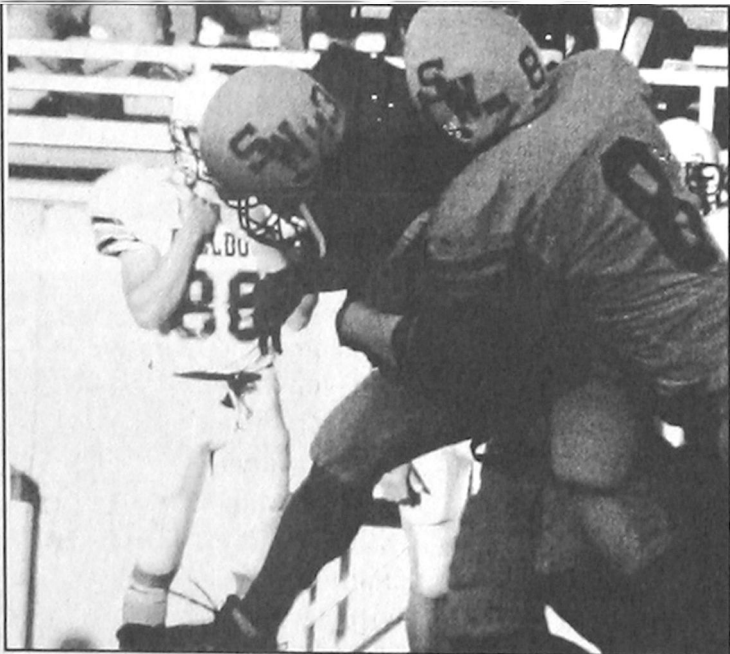
Bulldogs ready to bite

By BRANDON DRUMM/
STAFF REPORTER

"Anxious." That's the way Coach Paul Sharp and his players describe their feelings while looking this season and the upcoming home opener against West Texas A&M. And why not? The Southwestern Bulldogs went 7-4 last season and return 14 starters, including all-conference running back Jimmy Jenkins. The Bulldog defense is lead by sophomore free-safety Dustin Wall, leading tackler with 47.5 after a solid freshman campaign. But with all the

positives, Sharp said, "We still have lots of things to work on and you just can't rest on last season's success." And with that in mind the team is working hard and focusing on West Texas A&M, which should be a totally different team compared to last year after going 0-11. Under head coach Ronnie Jones, the Buffaloes recruited 17 junior college transfers and have a new offensive coordinator. Also, the Buffaloes will have already played a game a week earlier. The home opener is at 7 p.m. Saturday. Students with IDs are admitted free.

Photo by Philip Busey



Free Safety No. 8 Dustin Wall makes a tackle during the 2003 spring Blue/White game. Wall had six deflections and one interception last fall.

Three to go!

Southwestern's 19th head football coach, Paul Sharp, needs three more wins to become the all-time wins leader for SWOSU.

Coaches	Wins	Losses	Ties
Otis Delaporte	89	53	2
Paul Sharp	87	85	1
Bob Mazie	39	37	2
Joe Metcalf	32	21	2
Rankin Williams	31	30	7
Jake Spann	30	22	5
Joe Milam	22	25	7

Look out

The football team recently received a new endzone camera to be used to record during games. It will give coaches the opportunity to view games from the endzone. It will be used with the press box camera during games for better filming. The endzone camera is mobile and is used to record practices on the practice field as well.

2003 Bulldog Starters

Offense

QB	Reade Box	#12
TB	Jimmy Jenkins	#20
FB	Travis Cole	#22
C	Josh Werth	#60
LG	Brian Martin	#75
RG	Zac Bryant	#55
LT	Chad Madden	#73
RT	Brandon Guptill	#78
TE	Lance Buky	#85
WR	Steve Carballo	#21
WR	Chase Pratt	#4

Defense

DE	Rodderick Sheppard	#95
DT	Brian Hill	#70
NG	Rick Washington	#76
DT	Colt Allison	#93
LB	Josh Musick	#41
LB	Michael Hart	#1
LB	Jason Blanchard	#45
CB	Jason Munoz	#28
SS	Sean McCray	#2
FS	Dustin Wall	#8
CB	Shadeed Muhammad	#19

Special Teams

Punter/Kicker	Scott Poole	#24
Deep Snapper	Rick Washington	#76
Returner	Chase Pratt	#4

2003 Football Schedule

Sept. 6	West Texas A&M ^	7:00 PM
Sept. 13	Bacone College \$	7:00 PM
Sept. 20	Midwestern State ^	7:00 PM
Sept. 27	at Angelo State ^	7:00 PM
Oct. 4	at Central Oklahoma *	2:00 PM
Oct. 11	East Central *	2:00 PM
Oct. 18	at Southern Nazarene	1:30 PM
Oct. 25	Southeastern Oklahoma *!	2:30 PM
Nov. 1	at Northeastern State *	3:30 PM
Nov. 8	Tarleton State *	2:00 PM
Nov. 15	at Eastern New Mexico	2:00 PM

(MST)
Bold indicates home games.
^ Lone Star Conference Crossover Game
* LSC North Division Game
! 2003 Southwestern Homecoming
\$ Family Day
All times listed are Central Standard Time.

Action-Sports

SWOSU students get 10% off
all non-sale items all the time

104 E. College • Weatherford

Running ahead
of the pack...



PUZZLE

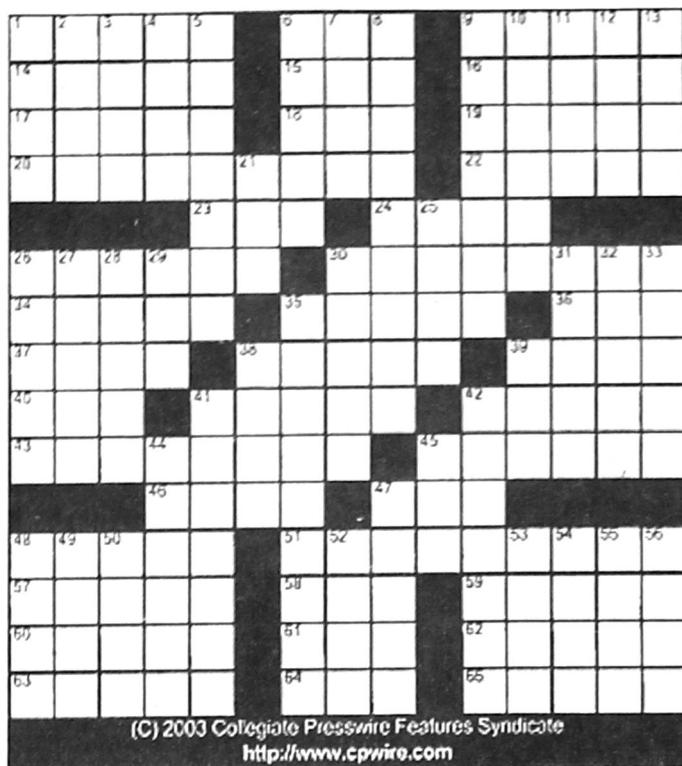
July 2, 2003

ACROSS

1. Spin nurse
6. Angry
9. Falls on a shirt
14. Happen
15. Climb
16. Christian love
17. Related to a crop
18. Prefix
19. Golden times
20. Calhoun
22. Sausage
23. One two three etc
24. Spruce
26. Type of cigar
30. Designer
34. Pertaining to the third degree
35. Turn the other one
36. North Chinese Dynasty
37. Augury
38. Husband
39. Being comment
40. Alamos, NM
41. What kind of bird gets worm
42. Male name meaning spear carrier
43. Dire
45. Relating to the main trunk of the heart
46. Computer's and bytes
47. Question
48. Bundle of wheat
51. Noggins
57. Desert plant
58. 100 square meters
59. Roman palace
60. Era
61. Used to create roofs
62. Rumors
63. Present is one
64. Rude
65. Winter vehicles

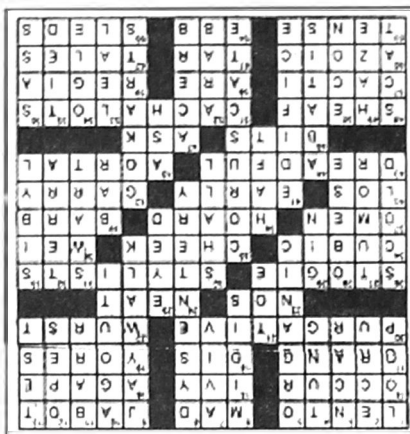
DOWN

1. In the
2. Beige color
3. National Center for Atmospheric Research (acronym)
4. Drying oil used in varnishes

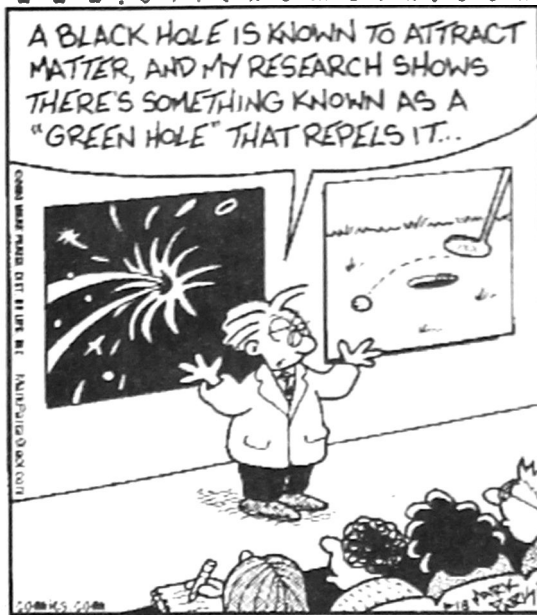


(C) 2003 Collegiate Presswire Features Syndicate
http://www.cpwire.com

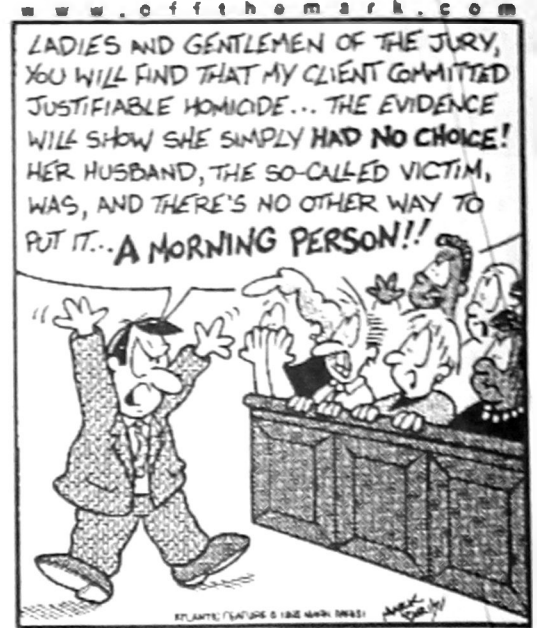
5. Fundamental
6. Type of dress
7. Israel, Avn
8. Montezuma's revenge
9. Cross in middle of the block
10. A rat
11. The original Roseanne
12. Op of doses
13. Frivolous mood
21. Digit
25. Leered
28. Regrimond
27. A swelling
26. More than helty
29. Card game
30. Used to express fulunty
31. Dark complected
32. Lima
33. A prophetic
35. Spark's
38. A handle
39. Conceal
41. An imposing structure
42. Small gas-powered vehicles
44. Barbed wire barricade
45. Remains of fire
47. Bitter
48. Ella Fitzgerald specialty
49. What some frats do
50. Course in supply and demand
52. Mad's Eastern
53. True
54. Stars at
55. No winner
56. Lip



off the mark by Mark Parisi



off the mark by Mark Parisi



WORD SEARCH

Bar-B-Que



Collegiate Presswire — News Students Use
http://www.cpwire.com

- | | | |
|-------------|-----------------|-------------|
| BBQ Sauce | Corn on the Cob | Mustard |
| Baked Beans | Grill | Picnic |
| Burger | Hickory | Ribs |
| Chicken | Hotdog | Shish Kabob |
| Coals | Ketchup | Smoers |

off the mark by Mark Parisi www.offthemark.com



Horoscopes

Courtesy of
www.horoscopes.com

Aries (March 29-April 19)

It's inevitable that you'll win. The interesting part is how you'll secure this victory. A relationship could change for better or worse based on what happens now.

Gemini (May 21-June 21)

Your followers deserve an explanation. Individual loyalty is pitted against civic duty. Your choice might be a tough one, but you'll be richer for making the right decision. What kind of career is best for a Gemini? Your love of learning and excellent communication skills will take you far along any career path.

Cancer (June 22-July 22)

Cancer finds fun and discipline in a healthy balance between self and community. You generate a safety zone from which you can be truly creative. Welcome back to your real life. You've been gone too long.

Leo (July 23-August 22)

You're in danger of giving away too much. Don't starve yourself for

reasons that have nothing to do with food or nourishment. The formalities are empty without any meaningful content.

Virgo (August 23-September 22)

First time's a charm for Virgo. With aim this good, there's no need to waste your ammunition. If people aren't already demanding your services, it's only a matter of hours before the phone starts ringing.

Libra (September 23-October 22)

Continue to distract yourself. Whatever it is, something is tugging at you with a major gravitational field. Secure your position by being strong for one more day.

Scorpio (October 23-November 21)

Your opinion is dominant. Anyone that would dare to stand up to you could become a worthy ally. Forge a bond that will never break or rust away with the passing years.

Sagittarius (November 22-December 21)

The scent grows cold while you hesitate. If this continues, your leadership may be called into question. Someone has you

dreaming when the situation calls for scheming. Wake up.

Capricorn (December 22-January 19)

A full schedule stimulates Capricorn. Right now, all projects are worth whatever time you can give them. Give your attention to friends who are motivated. The rest can wait for a more leisurely day.

Aquarius (January 20-February 18)

Outsiders want to come back in. It's not enough to vow to mend the error of your ways. You'll have to find a new niche, because the shape of things has changed since last time.

Pisces (February 19-March 20)

Pisces feels restless and a little naughty. The usual way of doing things could use a tweak. Mobile individuals might just pick

Zen Box

quote of the week

"A man who has attained mastery of an art reveals it in his every action."
-Samurai maxim, J. Hyams (1979, 15).

Courtesy of www.classicaldressage.com/zen/za/misc.html

Where is this spot on campus?



Submit your answer with your name and phone number to thesouthwestern@swosu.edu or drop it by Campbell 211 before July 10 to be eligible for a prize.

Sponsored by Ratcliffe's Bookstore