



9-22-1993

Volume 85 Issue 3

Southwestern Oklahoma State University

Follow this and additional works at: https://dc.swosu.edu/the_southwestern

Recommended Citation

Southwestern Oklahoma State University, "Volume 85 Issue 3" (1993). *The Southwestern*. 614.
https://dc.swosu.edu/the_southwestern/614

This Book is brought to you for free and open access by the Newspapers at SWOSU Digital Commons. It has been accepted for inclusion in The Southwestern by an authorized administrator of SWOSU Digital Commons. An ADA compliant document is available upon request. For more information, please contact phillip.fitzsimmons@swosu.edu.



Final election today

New queen to be crowned Friday

by Dee Dee Havins
Staff Reporter

The final election is being held today to determine the new homecoming queen, who will be crowned during the annual assembly Friday at 11 a.m. in the Fine Arts Center.

The queen will reign over the homecoming activities and will be presented during Saturday's game.

The five finalists, elected last week, include:
Angie Thompson, Altus, is sponsored by

the Student Education Association. Her escort will be Van Meilson, Altus.

Jennifer Crowe, OKC-U.S. Grant, is sponsored by Sigma Sigma Chi social sorority. Her escort will be Scott Zerby, Yukon.

Lori Kromer, Altus, is sponsored by Kappa Delta Omega social sorority. She will be escorted by Keith Wiginton, Altus.

Stephanie Henshall, OKC-Westmoore,



is sponsored by Stewart Hall. She will be escorted by Dustin Driskell, Cleo Springs.

Jennifer Travis, Custer City, is sponsored by the Baptist Student Union. She will be escorted by Sean Williams, Yale.

The Homecoming game begins at 2 p.m.

Paulette Carlson to perform Friday night

Paulette Carlson, former member of the country-western group Highway 101, will perform Friday, Sept. 24, at 9 p.m. in conjunction with both homecoming week activities and the Panorama series.

Carlson will put on her show in the Fine Arts Auditorium. Tickets are on sale now for \$5 in Administration Building Room 103, at all Weatherford financial institutions, the Chamber of Commerce office, the *Weatherford Daily News* office, and the Pioneer Center.

Additional ticket information can be obtained by calling 774-3767.

Carlson left Highway 101 and the safety of an established success to embark on her solo

career. While with the group, Carlson's vocal and writing skills racked up countless awards, chart-topping singles and best-selling albums.

Her first solo album, entitled *Love Goes On*, features such songs as "I'll Start With You," "It's Too Bad," and "Falling In Love for a Lifetime."

Carlson was raised in rural Minnesota and has been writing, singing and playing the guitar since her teens. She toured with a number of bands and won Minnesota's Female Country Vocalist of the Year Award.

In late 1986, Carlson and Highway 101 recorded their Carlson-penned debut single, "The Bed You Made for Me." The song headed up the charts and established her as a

top writer/artist.

Carlson is seen regularly on country music television stations and is considered one of the up and coming stars on the country music scene.

The next Panorama event will be the National Shakespeare Company's performance of *Romeo and Juliet*, Monday, Oct. 18, at 8 p.m. in the Fine Arts Auditorium.



Paulette Carlson

Inside

• page 4 – News

Final enrollment figures hit record numbers.

• pages 8-9– Homecoming

A look at the people, past and present, who give life to the annual celebration.

• page 12– Sports

Bulldogs defeat the Midwestern Indians.

The Southwestern

Panoramic improvements

After a very disappointing Panorama presentation last year, we criticized the direction the program had taken. Although we were taken to task for our criticism, it seems that things have changed for the better.

Students last year held very negative attitudes about Xiaopo Huang's lecture on Chinese economics. The lecture itself was very informative, but as a Panorama presentation, the implication was that the presentation held campus-wide interest. Unfortunately, it did not.

This year's line-up is much more impressive. Friday night, the campus will be entertained by up-and-coming country artist Paulette Carlson.

The most recent addition to the program is the National Shakespeare Company's performance of *Romeo and Juliet* Oct. 18. This is one of three culturally-enriching programs on tap for the year. The others include a performance by the Oklahoma Children's Theatre and the national touring company of *Pure Gershwin*.

What looks to be the best of the year's offerings will be a lecture by Holocaust survivor Helen Waterford. The one-man dramatization of Martin Luther King, Jr.'s life is also promising.

Overall it seems that students are in for an improved season of Panorama entertainment.

Editor-in-chief.....Chip Chandler
Advertising Manager/General Manager.....Jena Salisbury
Asst. Advertising Manager/Sports Editor.....Don Price
Photography Editor.....Lisa Loken
News Editor.....Rob O'Hara
Campus Editor.....Lori Watson
Art Editor.....Jim Kirkland

The Southwestern is the student newspaper of Southwestern Oklahoma State University. It is published every Wednesday during the fall and spring semesters, except during holidays and finals week, by the Southwestern Publishing Co., University Campus, Weatherford, OK, 73096, 774-3065. Students in the editing class serve as section editors.

The Southwestern encourages comment from the student body, faculty, and administration in the form of letters to the editor. All letters must include a name for consideration; however, the name may be withheld upon request. Letters should be sent to *The Southwestern*, 100 Campus Drive, SWOSU, Weatherford, OK, 73096.

The opinions expressed within signed editorials are the opinions of the writers; the opinions expressed in the unsigned, boxed editorials are the opinion of the staff. Neither are necessarily the opinions of the university administration.



By Chip Chandler

Liberally Speaking

Last week an informal poll was taken in a language arts class regarding the just signed peace treaty between Israel and the Palestine Liberation Organization.

Of the fourteen students in class, only one knew of the signing that took place the day before.

The students in the class were students who were expected to keep track of important news happenings. Yet they still did know of the event and its world-shaking impact.

This class should not be looked upon too harshly, though. It is but a symptom of the epidemic of the apathy on campus.

True, most college students lead very busy lives and simply do not have time to watch the evening news or pick up a newspaper. Others do not have a television so they can see the news.

Still others use the excuse that they cannot afford to buy the paper everyday. That excuse is weak, though. Will 25 to 50 cents a day really bankrupt someone, even the stereotypical broke college student?

Perhaps it could—but for those students who have difficulty parting with their hard-earned change, the library provides copies of major metropolitan newspapers (and yes, *The Daily Oklahoman* qualifies).

However, in the interest of this paper's regular readers, a new column is running. "In the News" will attempt to give important news highlights of the past week, including both serious and lighthearted stories.

This is part of this paper's commitment to educating our readers. In the past, we have been guilty of confining ourselves to this campus and its news exclusively. We are slowly expanding our boundaries to include local, state and national news.

Hopefully, this will help our readers, as well as ourselves, to expand their horizons.

Take Notice

•Each campus organization planning to be active this year is required to complete and return a current Campus Organization Report to the Office of the Vice President for Student Personnel Services (Admin. 103) by Sept. 29, 1993.

Forms have been mailed to listed sponsors and are also available in the Vice-President's office.

Each chartered organization must have a sponsor to be recognized by the university.

Southwestern's policy on sexual assault

Sexual Misconduct

Southwestern Oklahoma State University will not tolerate nor condone any form of sexual misconduct, physical, mental or emotional in nature. This includes, but is not limited to, rape (including "date or acquaintance" rape), sexual assault or sexual harassment. In instances where there is reason to believe that Southwestern Oklahoma State University's policies prohibiting sexual misconduct have been violated, the university will pursue disciplinary action. Students may elect to pursue the concern through the state criminal justice system as well as the university's student conduct system. If the university has reason to believe that sexual misconduct has occurred, the university's sanctions may include warnings, probation, restrictions, suspension or expulsion.

Sexual assault is defined as having sexual contact or sexual intercourse with another person without the consent of that person.

Consent is defined as positive cooperation due to an exercise of free will. Persons consenting must act freely, voluntarily and have knowledge of the act or transaction involved. Consent will not be implied from silence, passivity nor from a state of intoxication or unconsciousness. Lack of consent is implied if the victim is incapable of giving consent because of mental, developmental, or physical ability, or lack of legal age in giving consent. Lack of consent is implied if the threat of violence is used or due to an imbalance of power held by the perpetrator over the victim.

Procedure for Reporting Sexual Assaults

In the event of a sexual assault, the victim is encouraged to report the crime to the campus Department of Public Safety (DPS) if the act occurred on campus or to the appropriate authority if the crime occurred off-campus. Victims should take care to preserve the evidence of a sexual assault which may be necessary to the proof of the crime (i.e., do not take a shower).

Prosecution of the perpetrator is a matter for the victim to consider apart from reporting the crime. The information will be treated with the confidentiality afforded any victim of a crime. Students may also report the incident to the staff within the residence halls, the office of Student Personnel Services or other university staff who will in turn inform the office of Student Personnel Services. Victims are also encouraged to report the crime to the office of the Dean of Students in order to pursue disciplinary action through the Student Code of Conduct system. Students may request that campus personnel assist them in the reporting of the crime of sexual assault. False reporting of a crime is a misdemeanor and will be treated seriously.

Disciplinary Procedures in Alleged Cases of Sexual Misconduct

Students who wish to file a student misconduct report should contact the office of the Dean of Students, Administration Building Room 101. If the matter cannot be resolved by the Dean of Students in an informal manner acceptable to the person bringing the complaint, it will be the option of the complainant to pursue the formal process. In the event that

the complaining person wishes to file a formal grievance against another student accused of sexual misconduct, the president will appoint a committee, designated as the Committee on Student Conduct, to hear the case. This committee will be comprised of faculty and students in the same manner as outlined in the Student Code of Conduct policy. Should the complaining student name a faculty or other employee of the institution as the alleged perpetrator, the established university policy for grievance as found in the University Staff Handbook shall be followed. To initiate this action, contact the office of Affirmative Action.

a.) The complainant shall be permitted to have a person or persons of his or her choosing accompany him or her throughout the disciplinary hearing.

b.) The complainant shall be permitted to be present during the disciplinary hearing (except during the deliberations of the panel).

c.) The complainant shall have the right to be informed of the outcome of the formal hearing upon its conclusion by the panel.

d.) The person alleged to have engaged in sexual misconduct shall also be afforded all of the rights set forth in this section.

e.) If the sanctions against the alleged perpetrator include expulsion or suspension, the perpetrator may appeal the committee decision to the Vice President for Student Personnel Services within five working days of the issuance of the decision.

Education

Educational materials related

to sexual misconduct will be disseminated to each incoming student during orientation as well as those students currently enrolled on the campus. Orientation of all new students will include a component related to sexual assault and its prevention. Programming to promote the awareness and prevention of sexual misconduct will continue to be offered in the residence halls as well as other locations accessible to the greater student body. Self defense seminars are offered to the student body through the Department of Public Safety.

Services to Victims

Medical treatment is available through local physicians or at the Southwestern Memorial Hospital where evidence may be collected to preserve the option of prosecution if the victim so chooses. Students are encouraged to see the university nurse who will make an appropriate referral to area physicians, New Horizons Community Counseling and Mental Health Services, Inc., Great Plains Resource Center or Custer County Health Department. The Student Development Services office will provide initial counseling and referral to those students requesting assistance.

If requested by a victim, reasonable accommodations will be made to victims of sexual assault living on campus who request a room assignment change or an adjustment in their academic schedule as is possible within the existing curricular offerings.

The university will foster an environment of safety for the student body and will support a climate of acceptance and concern for victims of sexual assault.

National Service Act passes Senate 57-40

The conference report on The National and Community Service Act, co-sponsored by Senator David Boren, passed the Senate by a vote of 57-40. The bill would encourage national service in exchange for educational benefits

and expand Senator Boren's Civilian Community Corps program.

Under the national service plan, people over the age of 17 can earn educational awards of up to \$4,725 for a year of

community service. Participants must be high school graduates or working toward earning a Graduate Equivalency Diploma.

"This bill will be a very good investment and it's long overdue," Boren said. "National service will not only rebuild our cities and towns and provide student aid, it will revive the ethic of civic responsibility which has made this country great."

According to studies Boren cited on the Senate floor, similar state and local programs have returned two to three dollars in community projects for every dollar spent.

The National Service Act also reauthorizes Boren's Civilian Community Corps,

which was established last year as part of the Defense Authorization bill, for three more years. The CCC, modeled on the Civilian Conservation Corps of the 1930s, consists of two "Youth CCC" divisions.

The first is a year-long program for young people aged 16-24. In exchange for a year of service, the participants would receive \$5,000 worth of vouchers for continued education. The second division is a summer program for youths aged 14-18. These participants are given \$1,000 in education benefits or \$500 in cash. CCC participants will live together in rural and military facilities across the country.

Fall enrollment figures hit record high

by Crystal Marfil
Staff Reporter

A record number of students are enrolled according to the enrollment figures for the fall semester. Ever since the Sayre merger in 1987, the head count has slowly risen.

The head count for both of the campuses has risen from 5,355 in 1989 to a new record of 5,553 for the current semester.

The Weatherford campus shows an increase of 37 more students.

The figures show that enrollment is up from 4,953 students in the 1992 fall semester to 4,990 students for the 1993 fall semester.

President Dr. Joe Anna Hibler said that the school was pleasantly surprised, because officials were anticipating a decline in enrollment, because of the budget cuts closing some of the classes. "I'm delighted to see an increase. It's always good to see something positive as opposed to something negative," Bob Klaassen, director of admissions said.

Unique nursing program begins first year

by Leslie Hinds
Staff Reporter

"Next year's class is already being filled," according to Dr. Pat Meyer, the chair of the nursing department.

Dr. Meyer is referring to the one of a kind nursing program that allows registered nurses to work toward their bachelor's degree on Friday evenings and all day on Saturday. The students that have enrolled will take nine hours of classes in their major. While most of the RNs that are enrolled have an associated

degree, those who do not must complete the general education requirements, Meyer said.

This is the first program of its kind in Oklahoma with 18 motivated students. The nursing department will accept 25 to 30 students next year, Meyer says. The RNs enrolled in the program are of all ages and have varied backgrounds ranging from management nursing to critical care nursing.

The three professors that are teaching the weekend classes are Ms. LuJuana Reichmann, Ms. Mary Schenk, and Ms. Mattie Tolley.

Crossroads

Video • Music • Books

✓ Check us out

- ✓ the latest CD's and cassettes
- ✓ we can special order
- ✓ t-shirts
- ✓ greeting cards
- ✓ free rental with purchase over \$10

772-0303

5 Movies – 5 Days – \$5

10 to 10 M-Th; 10 to 11 Fri-Sat; Sun 12-10
1218 Weatherford Shopping Center
Formerly Aardvark Video



The Lost River Band will be performing at the Bulldog 5th Quarter during homecoming Saturday, Sept. 25, after the annual football game. The band will be playing outside the Student Union from 5:30-8:30 p.m. Also going on in the Student Union Snack Bar from 5-7:30 p.m. will be a buffet dinner for \$4.95. Alumni Association Executive Director Jim Waites invites all friends and alumni to participate in the two bulldog 5th Quarter activities.

Class of '43 holds reunion

First female pharmacy grads honored

by Billie Blum
Staff Reporter

Approximately 800 women have graduated from the Southwestern School of Pharmacy, but fifty years ago Betty Jo Millican Stephens and Ruth Wright Wilcox ventured into uncharted waters and became the first.

Stephens, Wilcox and the seven other members of the class of 1943 will be honored at the Alumni Homecoming dinner Saturday in the Pharmacy II Annex at 6 p.m.

Attendance of the alumni during homecoming weekend is always uncertain since reservations are not required, according to Dr. David Ralph, assistant dean for students and alumni affairs.

But Wilcox, who was contacted by phone at her home in Irving, TX, says she will be unable to attend the events due to poor health conditions and lack of sight. Stephens was unavailable for comment.

In interview, Wilcox said she became a pharmacist because she loved the sciences

and her father was one of the first college graduated pharmacists in Oklahoma.

"I thoroughly enjoyed pharmacy school," Wilcox said. "I had a lot of fun. It was nice being the only girl in most of my classes and of course there was not any prejudice toward women in that time period."

Wilcox was part time faculty during World War II. When the name Ruth Wright Wilcox is mentioned to the School of Pharmacy faculty today, the response is "a brilliant woman." Today she and her family own a four store pharmacy chain called Raven's and a hospital equipment store in Dallas. "If I could give advice to women in pharmacy school today, I would say, hang in there. It is terribly difficult and competitive now, but in the long run its all worth while," said Wilcox.

Since the times of Stephens and Wilcox the graduation numbers have tilted. The Pharmacy class of 1992 graduated 56 females and 47 males. More females graduated from the Pharmacy School last year than from 1943 to 1965 combined.

In the News

• Israel and the Palestine

Liberation Organization recognized a peace agreement last Monday. The PLO now recognizes the sovereignty of Israel and Israel, in turn, acknowledges that the PLO is the representative of the Palestinian people.

• President Clinton's long-

awaited health-care plan, promised since the campaign, is scheduled to be announced this evening. The plan was leaked last week to the press after months of complete secrecy. The plan is expected to cost \$700 billion in its first five years.

• Miami is now seen as the most

dangerous city in the U.S. according to a *USA Today* poll. Recent killings of nine foreigners have pushed the city above New York City and Los Angeles.

• According to new statistics,

people over 65 are hospitalized as often for alcohol-related disorders as for heart problems.

• First-class stamps will cost

more in 1995—possibly up six cents to 35 cents. Each one-cent hike raises about \$1.5 billion a year.

• Most Americans feel the space

program should be downsized or eliminated; 51 percent believe too much money is spent on NASA, says a *USA Today*/CNN/Gallup poll.

• "I hate you, you hate me. Let's

hang Barney from a tree." An official Barney-bashing club has been organized in Florida, according to the Associated Press. If you suffer from FOB (Fear of Barney), contact the I Hate Barney Secret Society, 10071 SW 17th Court, Davie, FL, 33324.

Booth represents school at State Fair

by Christie Vinson
Staff Reporter

When the theme "Excellence in Education" opens the 1993 State Fair on Friday, Sept. 17, Southwestern will be on hand with a booth located in the Made

in Oklahoma Building.

The booth, which has been continuous for many years, was set up to promote and inform people about Southwestern. The costs for setting up the booth were paid by the Southwestern Alumni Association and the Student

Senate. Coordinators of the booth are Brian Adler, Director of Public Information, and Benny French, Associate Professor, Pharmacy Administration.

"This is a good opportunity for us to display information about the various things we offer at

Southwestern," said Adler.

The state fair runs from Friday, Sept. 17 through Monday Sept. 20. The booth will be open everyday of the fair from 10 am to 10 pm Friday through Sunday and from noon to 10 pm Monday through Thursday.

Representatives for each school are responsible for finding students or faculty members to man the booth on it's assigned days.

"The booth wouldn't be possible without the hard work of the students and faculty that man the booth," said Adler.

Each school takes it's turn manning the booth.

Book discussion scheduled

by Anne Meek
Staff Reporter

A discussion of the book *The Power of Myth* by Joseph Campbell will kick off this year's "Let's Talk About It, Oklahoma." Sponsored by the Language Arts Department, this

series will begin Oct. 5 at 7:00 in the Weatherford Library.

Dr. Harbour Winn, a teacher at Westminster Day High School in Oklahoma City, will lead this discussion of Campbell's book. In it Campbell describes the feeling that one can connect mythology with our inner conflict.

In this series there are four other books that will undergo critiquing they include: *Black Elk Speaks*, Oct. 12; *A Passage to India* by E.M. Foster, Oct. 28; *The Summer Before the Dark* by Doris Lessing, Oct. 28; and finally *The Great Gatsby* by F. Scott Fitzgerald on Nov. 11.

WAL★MART®

Tradin' Days!

Trade in your clean, old jeans for
\$5 off any new jeans \$13 and up.

Trade-ins will be donated to
charity.

Brittania

Bonjour

Gitano

Sassoon

Wrangler

Ladies and mens jeans

Sale dates Sept. 24-Oct. 1.

Store hours: Mon-Sat. 8 a.m.-10 p.m.

Sun. 9 a.m.-8 p.m.

MAGGOODY'S

Monday Night Football Mania

Big screen action

Coors longneck football helmet specials

FOOD!!!

Wacky Wednesday

Krazy contests

\$ Cash and prizes \$

Ladies free tap draws 8-11

Any Coin Saturdays 8-11

Rock 'n roll and country hits

(by request)

Come see your pals and friendly staff

2120 Gary Blvd, Clinton, OK

323-5769

Fudge: Dealing a new hand

by Meridith Millican
Staff Reporter

In the middle of the office door hangs a photocopy of an article entitled "Why Baseball Is Better Than Football".

This sign gives insight into Keith Fudge, the newest addition to the Southwestern language arts department. He's as strong willed as any baseball coach and as graceful as any player, but the gleaming eyes and mischievous smile uncover the mind that lies behind the baseball fanatic exterior.

Keith Fudge is much like the college students he teaches English to; he's relaxed and finds life to be simply enjoyable. This, according to his students, is what makes his classes both fun and a learning experience.

Fudge's outlook on life could be due to his interesting background. Before he was passing out papers in classes at Southwestern, he was passing out cards in Reno as a casino blackjack dealer.

With a snicker he remembers his days in America's city of lights, "It was just an interesting four years, during which I met some really different and interesting people."

Keith Fudge is qualified to do more than deal cards. He is a teacher with a gift for making English easy to understand for his students. He received his undergraduate degree from Arkansas Tech.

He then obtained a Master's degree from the University of Mississippi and is currently working on his Doctorate's

dissertation that deals with the life and works of Stephen Crane.

Fudge explained, in a voice that had no evidence of being from Arkansas or Mississippi, that he had always been fascinated with the life of Stephen Crane because the man "burned the flame of life hard and fast."

This fascination is probably due to the fact Fudge has also accomplished much in a short period of time.

Besides being a part of the casino night life in Reno, he lived a much more laid back life as assistant curator at William Faulkner's home, Roanoke, in Oxford, MI, for three years.

What made Fudge realize that



Keith Fudge

he wanted to teach college English was an experience teaching high school English in a small town in Arkansas. "I really liked it," he said, "But to teach the kind of English that I wanted, I knew I'd have to further my degree."

Fudge has now reached one of his goals and says he loves Southwestern students and staff. As a matter of fact he sounds much like a minor league baseball player who finally has a shot at the big leagues, "I'm just glad to be here."

WELCOME TO ST. EUGENE CATHOLIC CHURCH AND STUDENT CENTER

704 North Bryan 772-3209
Rev. Stephen Bird, Pastor



Catholic Student Association Meeting
Wednesday, September 29, 7:30 p.m.

Mass Schedule: 7:00 p.m. Wednesday
6:00 p.m. Saturday 10:30 a.m. Sunday
Sacrament of Penance: 5:00 p.m. Saturday

QUESTIONS? If you have a question about the Catholic faith, St. Eugene Catholic Church invites you to attend information meetings on Wednesdays at 7:30 p.m. in the parish hall.

NABORS SHOE CENTER

Birkenstock

- Colors, sizes and styles for everyone
- Repair service available
- Men's and ladies' sizes



Colors available

•black•navy•forest•plum•taupe

Student's canine alter ego a familiar sight

by Rob Salinas
Staff Reporter

Residing on the first floor of Stewart Hall is a female with dual personalities.

Once a week during football season and several times during the basketball season this shy, nineteen year old transforms into the most recognized figure on campus. The figure, of course, is Brandy the Bulldog; the alter ego is Jami Shields.

With the winning tradition Southwestern athletics has enjoyed over the years, Brandy is a sight opposing teams have grown to fear. Around campus you would be hard pressed to find anyone who couldn't pick our mascot in a lineup, but few could identify who plays the part of our favorite K-9.

Jami Shields is a sophomore from Enid. A member of Kappa

Delta Omega, she majors in elementary education and minors in journalism. This is Shields' second year to act as the mascot.

Last year was a trial run for the Jami/Brandy duo. Jami was quick to point out that her involvement on the sideline was adlibed. There were no skits set up with a specific part for Brandy.

Jami has expressed an interest in increasing her role on the sideline, however the costume presents several restrictions. Unlike mascots such as the Charlotte Hornet or the Phoenix Gorilla, the Brandy outfit is not made for tumbling and jumping. Visibility is very poor.

As a matter of fact, one of Jami's major accomplishments in each game is getting down the stairs leading to the playing field.

"It's the feet," laughs Jami as she recalls a game where an escort

was required to lead her down a long flight of stairs and on to the field.

As might be expected, Jami's biggest fans are the kids. Children are always hanging on Brandy, pulling her tail and asking questions such as "are you a boy or a girl?" She is often asked for an autograph. This kind of attention doesn't bother Jami, since she wants to be a teacher. Making the kids smile is the most enjoyable part of her work.

Even Jami is unsure of Brandy's gender. "I don't think it has a sex."

She seems to believe that the gender of the mascot has more to do with who's in the suit than the suit itself.



Last year, when the Student Senate needed a person to don the guise of our K-9 and help lead the crowd into cheers, Jami just

'My task is being behind things and making them work' Behind the scenes with the scene builder—Joe Thompson

by Ellie Miranda
Staff Reporter

"Call me Joe," he said.

And almost everybody does.

Joe Thompson, 39, is technical director and Director of the Fine Arts Center. He is responsible for the Homecoming setup and the upcoming Paulette Carlson show.

Joe, who 13 years ago was working with famous names like Ozzy Osbourne, Grand Funk Railroad, and Three Dog Night, is right here on campus, teaching. "This is what I like to do, this is where I want to be."

He convinced me.

The man is a dynamic and

organized person. You can see it throughout his office.

For him, anytime is time to work. The projects are on top of the desk, little notes are beside his telephone...and he keeps a daily schedule—the "Tentative Production Schedule."

He is busy, very busy.

"My task is being behind things and making them happen right," he says, laying down his chair and picking up his cap (always with a cap).

"It is not a job, it is not a career," he said. "You will not get rich. It is a way of life."

Work is a very important part of Joe's life, and he expects his students take it as seriously as he does. He

looks always for perfection. He wants them to be responsible. He knows that some people will like it, but some won't.

"I want them take time to do the project, take pride. If they don't, I don't want them around here," he said, punctuating the statement with an air of aggression.

Joe has many challenges in his career. When he went to Texas Tech to get his master's degree, he worked beside prestigious names like Osbourne, GFR, TDN and on big plays like *Philadelphia Story*, *The Wizard of Oz* and *Hamlet*.

This last one he describes as a most difficult performance because it required working with the ego of

professionals like Barry Corbin (*Northern Exposure*), and G.W. Bailey (*M.A.S.H.*) - both Texas Tech graduates.

Joe has given nine years of intensive dedication at Southwestern, providing the stage with form, color and sound.

The musical *Oklahoma*, done during his first year here, was his biggest frustration.

"I hated it," he grumbles. "It was the worst thing I ever did...I try to forget about it."

Joe says the upcoming fall production of the trilogy *New Music* is going to be another major difficulty.

"We're working on one right

ent during games



Left: Brandy waves the crowd to excitement at a basketball game last season.

Above: Jami off-duty.

seemed the obvious choice.

Five years of cheerleading experience in high school and the fact that time was running out

quickly earned her the job.

To make sure that she was really ready for the big time, Jami suited up and began wandering the halls of her dorm the night before her big debut. The feet posed the biggest problem, but after some practice laps around the dorm she began to make the oversized bulldog come to life.

"Never take your head off," is the biggest advice Jami offers to all would-be mascots.

"This way you never get out of character. The crowd will always perceive you as the Bulldog, the Chicken or whatever instead of the guy with the gorilla head on."

If given the opportunity to work professionally as a team mascot, Jami said she would accept, but "...I would make sure I graduated first. That way I'd always have something to fall back on."

em happen right'

honest, private, simple

now that's gonna be a challenge. When you try to do three full length plays in back-to-back weekends, it's a challenge," he says.

Joe grew up on the farm in Lone Wolf with a brother and two sisters. He is not married.

He graduated from Lone Wolf High School, then he went to college in Stillwater for a year.

From 1972 to 1978 he worked with his family on custom harvesting, and in the winter he ran a construction business building houses and bars.

He traveled with his partner's band also, doing the sound and the lights on the weekends.

Actually the reason he came back

to school was to learn more about that light and sound equipment. He majored in theater.

A college education changed something in his life. "It made me appreciate the theater literature, and creating for it was a new challenge," he said.

Joe enjoys his time reading books or plays. He likes to be by himself when he needs to reconsider any point in his life.

He does not have any regrets. He does not look backward or forward.

"The best way to make tomorrow better is to live today the best you can," he concluded.

It is part of his character: honesty, privacy and simplicity.

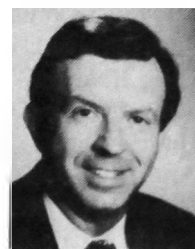
Alumni Hall of Fame to induct three Saturday

Three alumni will be inducted into school's Distinguished Alumni Hall of Fame during homecoming activities Saturday.

The honorees are James R. Bates and Charles E. Capshaw, both of Houston, and William Robert Romig of Los Angeles. The trio will be recognized at the Southwestern alumni and friends luncheon at 11:30 a.m. in the Student Union Ballroom with formal induction scheduled at half-time of the 2 p.m. football game. President Joe Anna Hibler will present each with a plaque.

James R. Bates is currently a senior flight integration manager of the Space Shuttle Program at the Johnson Space Center in Houston. His present challenge is the Hubble Space Telescope servicing mission in late 1993.

Charles E. Capshaw has worked with Phillips 66 Company for 16 years having been assigned nine different jobs. Capshaw invented a polyethylene catalyst which is commercial today worldwide and is currently the basis for millions of dollars in sales in Phillips. During the last five years, Capshaw has been involved in a variety of assignments in the plastics division. Overall, Capshaw has been instrumental in the creation of new businesses which, in turn, translated into jobs for people. Capshaw holds a master's degree from



Oklahoma State University and his doctorate from the University of Texas at Austin. Capshaw graduated from Chickasha High School in 1964.

William Robert Romig

graduated from Clinton High School in 1944 as class valedictorian. He

attended the University of Oklahoma and then graduated from Southwestern in 1948 with a degree in

education. He received his master's degree in bacteriology in 1957 from the University of Texas in Austin.

Romig, with help from his graduate students and research assistants, have published over 100 scientific papers in

various journals. Recently, Romig has been involved in designing a new

microbiology wing for a combined Chemistry-Microbiology Building at UCLA.



Tickets are available for both the Athletic Alumni Hall of Fame banquet and the Distinguished Alumni luncheon in Administration Building Room 201. Prices are \$10 and \$7, respectively.

Southwestern's Corner on Scholarship

Associate Vice President's Message

The Faculty Research Committee has finalized plans for the **First Annual Student Research/Scholarly Activity Fair**. Faculty and students who are currently engaged in research or scholarly activity are invited to submit an application for presentation of their work. Applications are available through Dr. Nancy McClain (S-208, Ext. 3700), Dr. Pat Meyer (N-207, Ext. 3237), Dr. Blake Sonobe (C-201-D, Ext. 3264), Dr. Barbara Matthews, (MB-209-A, Ext. 3042), Dr. Ed Fisher (P-331, Ext. 3134), Dr. Don Wilson (E-109-5, Ext. 3215), Dr. Vilas Prabhu (p-328, Ext. 3274), or the Office of Sponsored Programs (OSP), A-212, Ext. 7012. The deadline for

applications is February 12, 1994.

The Fair will take place on March 30, 1994. I ask that you mark your calendars. The tentative time is from 2:00-4:00 p.m. in the student union building on the upper level.

Administrators and Faculty in the News:

***Joe Anna Hibler**, President, Ext. 3766, published an article in the *1993 Yearbook of the National Association of Business Education*. The article was entitled: "Leadership profiles."

***John Hays**, Executive Vice President, Ext. 3037, was selected as a member of the seventh class of *Leadership Oklahoma*. The purpose of the program is to develop individuals for state leadership roles.

***Philip Holley**, Social Science, Ext. 3157, presented a paper at the *Correction Research Symposium* in Oklahoma City. The paper was entitled: "Preliminary assessment of the regimented inmate discipline (RID) program."

***Larry Segars**, Pharmacy Practice, Ext. 3764, published an article in *Clinical Pharmacy*. The article was entitled: "Mesalamine and olsalazine: 5-Aminosalicylic acid agents for the treatment of inflammatory bowel disease."

***Michael Cassity**, Music, Ext. 3218, published an article in the *Journal of Music Therapy*. The article was entitled: "Psychiatric music therapy assessment and treatment in clinical training facilities with adults, adolescents,

and children."

Requests for Proposals (RFP's):

THE AMERICAN COUNCIL ON EDUCATION supports a Fellows Program. The program is designed to prepare professional leaders for higher education. The amount of support is an academic level and a \$10,000 travel budget. The application deadline is November 1.

W.K. KELLOGG FOUNDATION supports a Fellowship Program. The program is designed to prepare leaders who can function effectively and knowledgeably with complex problems. The maximum amount of the award is \$85K. The application deadline is December 15.

U.S. DEPARTMENT OF EDUCATION supports training personnel for the education of individuals with disabilities. The maximum amount of the award is \$135K. The application deadline is November 19.

NATIONAL ENDOWMENT FOR THE HUMANITIES supports strengthening elementary and secondary education in the humanities principally through faculty development. The maximum amount of the award is \$180K. The application deadline is December 15.

NATIONAL SCIENCE FOUNDATION supports projects on curriculum development, faculty preparation, and materials development. The amount of the award varies with the project. The application deadline is November 1.

Pharmacy class announced

The School of Pharmacy has admitted 62 students into the professional program for the fall 1993 term. Chosen from 235 qualified applicants, the class has an average cumulative grade point average of 3.33.

Minimum requirements for admission include the completion of at least 60 semester hours of specified courses with a cumulative grade point average of at least 2.00.

The following have been admitted this semester:

Gary D. Allen, Newcastle; Nolen D. Anderson, Ardmore; Jason C. Bean, Okemah; Debbie L. Brendle, Muskogee; Janet Bridges, Lubbock, TX; Catherine Bruns-Pruitt, Ft. Worth; Santiago Cardona, Grandfield; Christi Carroll, Lawton; Chad Cartwright, Lubbock; Marianne Cochran, San Marcos,

TX; Lisa M. Coffelt, Kemp, TX; Kimberly Cox, Amarillo, TX; Kevin Culver, Jay; Dondra DeLoach, Lubbock; Marc Dusek, Springtown, TX; Samuel Emerson, Knox City, TX; Jane Frymire, Thomas;

Also Robby Gaston, Andrews, TX; Susan Gillis, Harrold, TX; Justin Green, Tulsa; Sherry Hacker, Myra, TX; Natalie Hampton, Lawton; Jamie Hancock, Wagoner; Craig Hickerson, Durango, CO; Alicia Huffman, Paris, TX; Mary Hurley, Dallas; Thomas Irby, Artesia, NM; Todd Jackson, Oklahoma City; Bruce Karns, Yukon; Scott Keeler, Blanchard; Leonie Kinder, Colcord; Kristin Klein, Lawton;

Also Allen Law, Hobart; Patricia Lee, Odessa, TX; Sang Min Lee, Junction City, KS; Stephanie Liner, Richardson, TX; Daniel Long, Gore;

Bradley Mahan, Altus; Christine Matkin, McAlester; Lorri Mayfield, Clayton, NM; Linda Morris, Palestine, TX; Alisa Peters, Plainview; Royce Petty, Stephenville, TX; Debra Polk, Norman; Michele Raus, Paris, TX; Dustin Richards, Amarillo; Gina Roberts, Chattanooga;

And, Cynthia Robinson, Owasso; Michael Ross, Helena; Connie Rutledge, Pampa, TX; Michael Schmitz, Caldwell, KS; Amy Schroeder, Perryton, TX; Kirk Shastid, Checotah; Terra Shatswell, Altus; Joele Smith, Lookeba; Cynthia Speck, Denison, TX; Rachel Taylor, Weatherford, TX; Jason Thibodeau, Enid; Cheryl Thompson, Tulsa; Jana Tiner, Hale Center, TX; Tonya Tucker, Ponca City; Rosie Wauson, Plains, TX.

News in Brief

Grassroots Environmental

The Southwestern Grassroots Environmental Club meets every Tuesday night at 8 p.m. in Old Science Room 315. For more information call Cherie Chain at 774-1420 or Julian Hilliard at 774-6208.

Baptist Student Union

The Baptist Student Union will host a concert on Thursday, Sept. 23.

The concert will feature *Forerunner*, a contemporary Christian band from Oklahoma City. The concert will begin at 9 p.m. after which an oral presentation will be given by guest speaker Chris Bennet.

The group is composed of five college-age men, including drummer Allan Johnson, former Southwestern student.

The concert will be held in the BSU building. Director Jim

Morrison invites all interested students to the free concert.

Art exhibit

An art exhibit featuring the works of the late Myrle E. Kelly will be held Sept. 24 through Oct. 18 in the Art Building's art gallery.

Kelly organized and served for more than 30 years as head of the Southwestern art department.

Southwestern Art Department chairman Patrick Riley said the opening of the exhibit will be held in conjunction with Homecoming activities Friday evening from 5-7 p.m.

Kelly joined the faculty in 1918

as an art and penmanship instructor, retiring 44 years later in 1962. Her association with Southwestern began even before she became a faculty member, though. She attended Southwestern Normal School for six years, completing high school and also obtaining a bachelor's degree.

Wesley Foundation

Wesley Foundation members will be attending the Carman concert and the State Fair Monday, Sept. 27, as a group.

Carman is a contemporary Christian group. Tickets are \$12 plus a \$4 gate fee.

Special student savings right now

With this, you can save for years.



That penny jar on your dresser

Now, you can get substantial savings on these Macintosh personal computers. To order yours direct from Apple — and to find out about special student financing with the Apple Computer Loan* —

With these, you can save right now.



Apple Macintosh Color Classic® 4/80, Built-in 10" Color Monitor and Apple Keyboard II. \$999

Apple Macintosh LC III 4/80, Apple Basic Color Monitor & Apple Extended Keyboard II. \$1313

Apple PowerBook™ 115B 4/80, Built-in Keyboard & 10" Backlit Super Twist Monochrome Display. \$1342

call 1-800-877-4433, ext. 40. Or, visit your Apple campus representative today. And discover the power more college students choose. The power of Macintosh. The power to be your best.



To order direct from Apple or to learn more about Apple products and easy financing —
CALL 1-800-877-4433, ext. 40

Defense shines in 13-9 victory

by Don Price
Sports Editor

What does it mean when the visiting team rolls up 376 yards in total offense but still comes up short on the scoreboard?

It means that like a bunch of young saplings in a tornado, the defense bent but didn't break.

That is exactly what happened Saturday night in front of 3,000 Bulldog fans. Time after time the defense rose to the occasion to thwart what seemed at the time to be a constant barrage from the Midwestern Indians' offensive machine.

Southwestern defensive back Michael Walker should be singled out for having an outstanding game in the 13-9 victory.

Walker intercepted one Indian pass, recovered an errant fumble and raced 50 yards untouched down the sidelines to give Southwestern the lead that he and the rest of the defense refused to relinquish.

The Indians got on the score board first as Mark Marsh hit on a 31 yard field goal with 7:26 to go in the second quarter.

The single scoring drive for the Bulldogs was mounted late in the same quarter when Donnie Kerr carried for 43 yards in the grinding 69 yard drive. The highlight of the drive was a 21 yard completion from quarterback Grant Pitt to Tim Martin.

The pass went for 21 yards and set Southwestern up at the Indian 21-yard line. After several plays

and another first down, Kerr went over from the one to give the Bulldogs a 7-3 halftime lead.

The third quarter was, depending on which type of football fan you are, the best of times or the worst of times.

Southwestern started by kicking off to Midwestern, and with the exception of a minor five-play drive by the Southwestern offense, the defense stayed on the field.

It was also in the third quarter that David Wells made a solid hit on an Indian running back causing the ball to pop loose and into the waiting arms of Walker who scored to give the Bulldogs their final scoring.

It was the third quarter when Midwestern's elusive quarterback Vince Pettigrew and a slew of running backs accounted for a majority portion of their 376 yards in total offense.

Pettigrew connected on 13 of 20 passes with two interceptions for a total of 116 yards during the game.

"I have watched several films of Midwestern's quarterback [Pettigrew] and last night was probably his best passing game ever," said Steve Williams, defensive coordinator for Southwestern.

Midwestern did mount a scoring drive in the fourth quarter as Pettigrew carried the ball in from the one to cut Southwestern's lead to 13-9.

Midwestern drove deep into Bulldog territory on two more



Southwestern's Keith Wood, Farmersville, TX, kicks off another Bulldog football season against Midwestern. Photo by Lisa Loken

occasions.

One drive ended when Walker deflected a fourth down pass from Pettigrew to Stegell allowing the Bulldogs to take over on downs.

Southwestern's Sylvester Journey ran for a first down but the play was nullified by a penalty.

After Kerr came up short on third down, punter Todd Ritz kicked the ball back to the Indians for the final time.

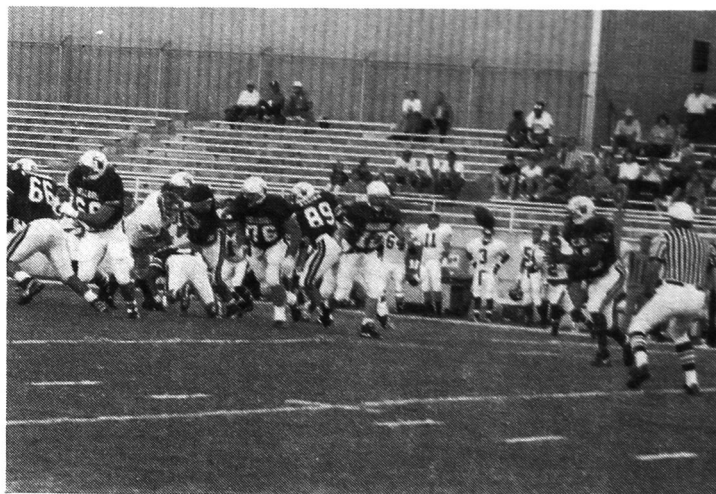
This final attempt was turned back when defensive back Stacey Hunt made a diving interception

of a Midwestern pass with 1:02 left in the game.

The Bulldogs were able to run out the clock and come away with a hard fought victory.

Offensively for Southwestern, Sylvester Journey carried 20 times for 57 yards, Donnie Kerr, 10 times for 48 yards, Ronnie Hughes, twice for 7 yards, and Robert Maney, once for 6 yards.

Grant Pitt completed only two of nine attempts for 46 yards and the Bulldogs had 148 yards total offense.



Led by the offensive line Sylvester Journey heads around left end after taking the pitch from quarterback Grant Pitt. Photo by Lisa Loken.

Defensive trio off to promising start

With just two games under their belt a trio of Bulldog defensive players are having stellar seasons, according to information supplied by the NAIA statistics.

Linebackers Yohance Brown, Altus freshman, David Wells, Ponca City junior, and defensive back Michael Walker, OKC junior are leading the team in several categories.

Brown and Wells are leading the defense with 21 solo tackles followed by Walker and John Wichert.

Wells was responsible for the powerful hit on Midwestern's running back, which resulted in the ball being fumbled and returned for a touchdown by teammate Walker.

Walker returned the ball 50 yards for the score, intercepted a earlier pass and was instrumental

in breaking up a pass play on fourth down that help Southwestern secure their first victory.

"Walker is playing extremely well at the present time," said defensive coordinator Steve Williams, "He should be singled out for his performance against Midwestern."

Other defensive members contributing to the first victory of the season were defensive end Anthony Cathey, Fredrick, Eric Garmond, Houston, TX, Brad Owen, Burkburnett, TX, and Stacy Hunt, senior from Cache, who also had a diving interception to ice the game for the Bulldogs.

Offensively for the Bulldogs, Grant Pitt completed on two key passes to Tim Martin for 46 yards, to help sustain drives.

Sophomore Donnie Kerr from



Columbia, NJ, had a fine game gaining 48 yards and one touchdown on 10 carries.

Starting halfback Sylvester Journey accounted for the majority of the Bulldog offense. He carried the ball 20 times for a total of 57 yards.

Todd Ritz, Weatherford backup quarterback and punter had 5 punts for 180 yards and a 36 yard average.

The defense will go up against West Texas A&M's run and shoot offense Saturday afternoon at 2p.m.

Defensive coordinator Steve Williams discusses strategy with Yohance Brown, defensive captain for the Bulldogs. Photo by Lisa Loken.

NEWS FROM THE Dog Pound

• Coach Jim Wahnee said that freshman defensive tackle, Vince Woodson, Blanchard, has undergone surgery for repair of his anterior cruciate ligament, this

past Wednesday. Woodson will probably be lost for the rest of this season.

• It was announced this week

that Junior Lowden, All-American tight-end from Tecumseh, is out for the season.

The injury was not responding to treatment and in order to have Lowden ready for next season, the decision was made to hold him out during this, his junior year.

• Did you know that the Southwestern Bulldogs defeated the Oklahoma State Cowboys 2-0 in 1909? They were later beaten by Oklahoma State 117-0 and the University Of Oklahoma 140-6 in 1916.

• Bulldog loyalists should remember that after the homecoming game with West Texas A&M the Bulldogs go on an extended away game schedule.

First, they will take on Tarleton State Oct. 2, followed by Arkansas Tech Oct. 9, Northwestern Oct. 16, and East Central Oct. 23.

The Bulldogs will finish off the season at home with Southeastern Oct. 30, followed by Northeastern Nov. 6 and Langston Nov. 13.

• Defensive coordinator Steve Williams says the upcoming game may feature another offensive showcase as West Texas A&M runs a run and shoot wide open offense.

The time for the homecoming game is set for 2:00 p.m. at Milam Stadium.

A packed house is expected for the early homecoming game.

King's

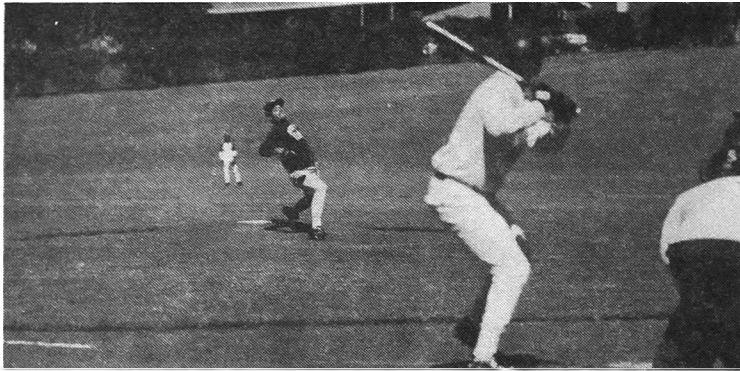
Gift and Flower Shop



Main and Washington

772-3378

Boys of spring get head start on season



Intensity shows on the face of Southwestern Pitcher Steve Sparks as he strides toward the plate against Redlands Junior College.

The Southwestern Oklahoma State University baseball team is experiencing a busy schedule of scrimages this fall.

The scrimages will be played informly and are more of a learning session than a real game. Nonetheless the games provide an opportunity for baseball fans on

campus to become acquainted with the players and coaches that will represent the university next spring.

"Losing players like Ricky Morris, Josh Neese, and Tony Rodgers will definitely hurt, but we can better assess our future after these scrimages," said head coach Larry Guerink.

Tentative schedule

September 23	Connor Junior College	1p.m.
October 2	Western Junior College	11a.m.
October 9	Seminole Junior College	12p.m.
October 16	Eastern Junior College	12p.m.
October 17	Seward County Junior College	12p.m.

Intramural season begins

A full schedule of sports is presently being enjoyed by over a 1000 students on campus through intramural sports, according to information obtained from Del Hardaway, assistant intramural director.

Hardaway said that only women's flag football is currently in need of teams.

He said that volleyball, men's flag football, and coed softball teams are experiencing great success in recruiting enough teams to establish a full league.

Lane Nelson, intramural statistician, said that during a four game set of softball games Thursday night at Rader Park, over five hundred students and fans turned out to either participate or play.

Hardaway said that intramural sports under the direction of Nelson Perkins, intramural director, would be providing 3 on 3 mens and womens basketball, as well as indoor volleyball once the weather turns inclement.

Hardaway said that the gym is open from 6-11 p.m. Monday and Thursday and 3-9 p.m. Fridays. Land aerobics is held from 5-6 p.m. Monday and Friday, while water aerobics is from 6-7 p.m. Tuesday, Wednesday, and Thursday.

Hardaway said pool hours are Monday and Friday 6-8 a.m., Tuesday and Thursday 6-11 p.m., and Friday 12-3 p.m.

There are 15 mens and 7 womens volleyball held Monday and Tuesday from 3-7:30 p.m. in front of Neff Hall.

Flag football, both men and womens, is played on the band field, northeast of the child development lab on Monday and Thursday 4-8 p.m.

There are 28 teams participating in coed softball at Rader Park from 5-12 p.m. on Wednesday and Thursday.

Hardaway said that sign up for bowling teams is being held and that the league needs 8 teams and will start Tuesday, Sept. 28 at the city bowling lanes.

The **Cuttin' Chute**
hairstyling

INTRODUCING

Monica West, nail technician

Introductory offer: **Full set Nails \$30**

1709 E. Main
(Behind Gayers)

772-6844

Walk-ins welcome



Floral Treasures

Homecoming Mums

Fresh and silk starting at \$15

8-5:30 Mon.-Sat. 100 East Main 772-1401

IT'S TIME TO DINE!

CITY DINER

GREAT FOOD!

1/2 LB Burgers with Fries
Starting at only \$4.35 + tax

GREAT ATMOSPHERE

GREAT FUN!

New Fajitas!!
1231 E. Main

ken's
772-5526 **PIZZA**®

Carryout & Delivery Citywide!

LARGE PIZZA • MEDIUM PRICE

Redeem this coupon for a Large Pizza of your choice for the Medium Pizza price.

Coupons not good on Price Pleasers or Specialty Pizzas.
One coupon per customer, per pizza please.
Good for Dine-In, Carry Out and Delivery as available.

ken's
PIZZA

772-5526

99¢ PIZZA

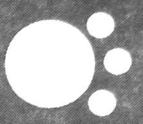
Coupons Not good on Price Pleasers or
Specialty Pizzas. One coupon per customer,
per pizza please. Good for Dine-In,
Carry Out and Delivery as available.

772-5526

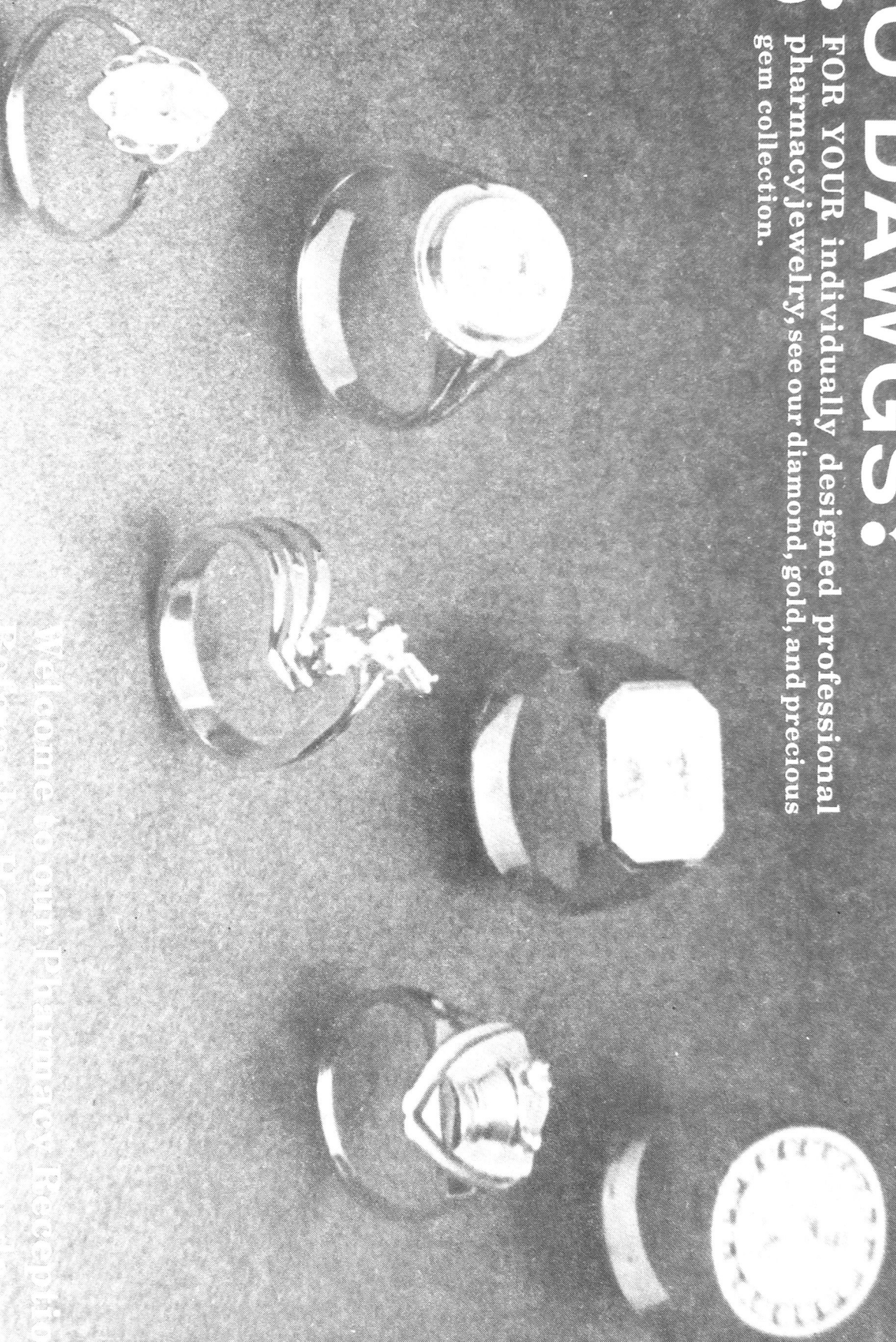
BUY AT THE REGULAR
PRICE GET A MEDIUM
PEPPERONI PIZZA FOR
99¢

ken's
PIZZA

GO DAWGS!



FOR YOUR individually designed professional pharmacy jewelry, see our diamond, gold, and precious gem collection.



Welcome to our Pharmacy Reception
Before the Homecoming Parade

Kelley
JEWELERS



107 W. Main
Weatherford, OK

772-3113