



3-15-1989

1989 Showcase for Student Artists

S.O.S.U Art Department

Follow this and additional works at: <https://dc.swosu.edu/westview>

Recommended Citation

S.O.S.U Art Department (1989) "1989 Showcase for Student Artists," *Westview*: Vol. 8: Iss. 3, Article 4.
Available at: <https://dc.swosu.edu/westview/vol8/iss3/4>

This Artwork is brought to you for free and open access by the Journals at SWOSU Digital Commons. It has been accepted for inclusion in Westview by an authorized administrator of SWOSU Digital Commons. For more information, please contact phillip.fitzsimmons@swosu.edu.



S.O.S.U. ART DEPARTMENT

1989 SHOWCASE

for STUDENT ARTISTS



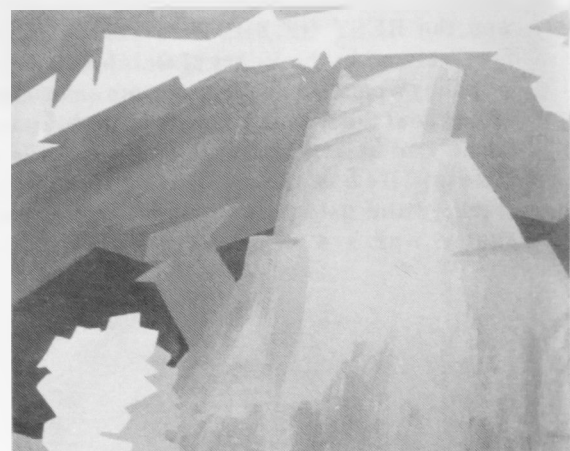
by Jay Hollopeter

Pencil

Untitled

by Twila Sutton

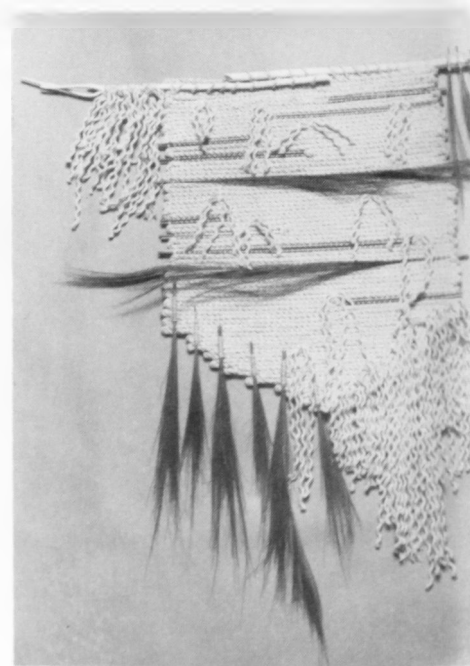
Silver Point



"Ghost Mound"

by John Hubener

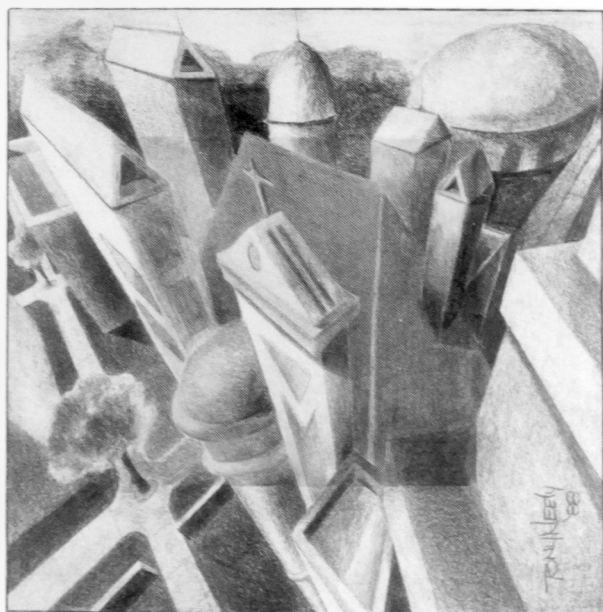
Acrylic



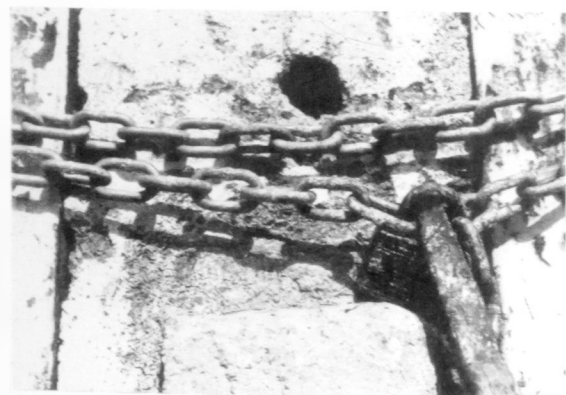
"Oklahoma"

by Sossee Eskidjian

Weaving



"Crowder Cathedral" by Tony Neely
Color Pencil



by Gina Mitchell B/W Photo



Untitled
by Jay Hollopeter
Silver Point

Untitled

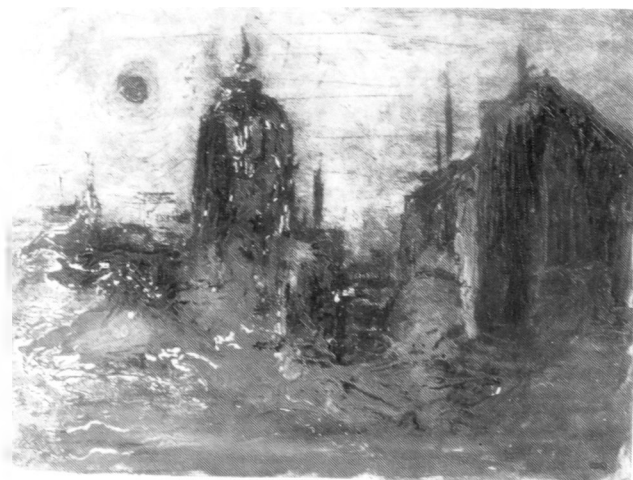
Hand Made Paper



"Mother Earth" by Karen Sullivan

"Northern Light"

by Tony Neely Collagraph



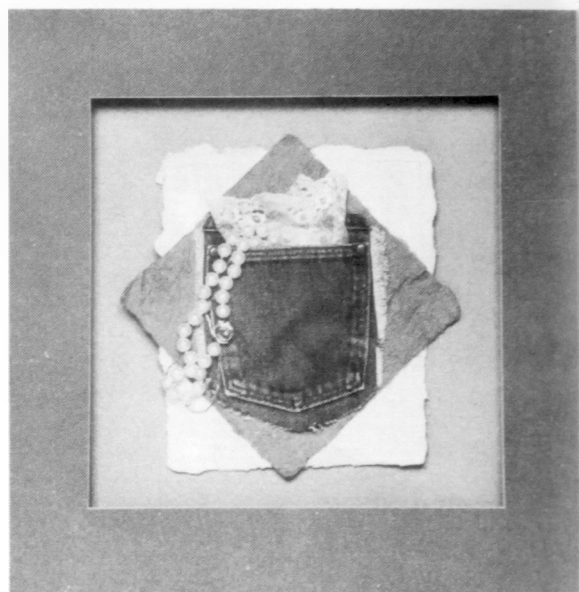


"Morning Exercise" by Patty Lack

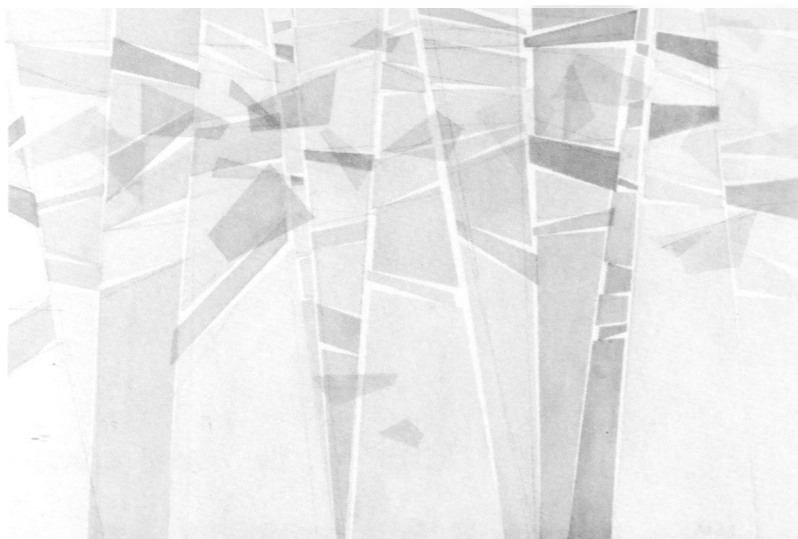
Dry Point Etching Prints

"City Slicker"

Mixed Media



by Sheila Loftiss



"Summer Zephyr"

by Cathy Wells

Watercolor



"Karen" by Janie Dodd

Watercolor

"Feline Ceremonial Mask"

by Sheila Loftiss

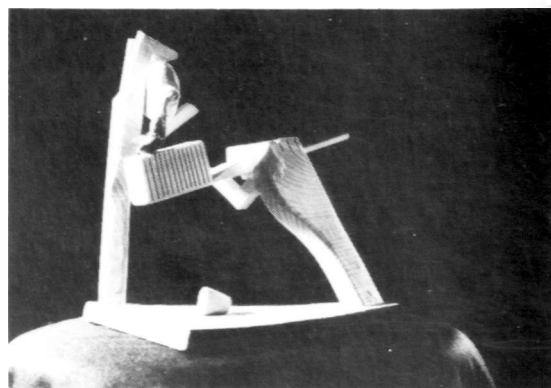
Mixed Media



"Morning Ritual"

by Kedron Smith

Wood Carving





"Night Moves"

by Janie Dodd

Pastel



"American Pride"

by Shannon Bower

Watercolor

"Passage"

by Cathy Wells



B/W Photo

"Two Horses & a Yucca"

by Janie Dodd

Watercolor

