



3-15-1988

## Student Artists' Showcase

SOSU Art Department

Follow this and additional works at: <https://dc.swosu.edu/westview>

---

### Recommended Citation

SOSU Art Department (1988) "Student Artists' Showcase," *Westview*: Vol. 7 : Iss. 3 , Article 5.  
Available at: <https://dc.swosu.edu/westview/vol7/iss3/5>

This Artwork is brought to you for free and open access by the Journals at SWOSU Digital Commons. It has been accepted for inclusion in Westview by an authorized administrator of SWOSU Digital Commons. For more information, please contact [phillip.fitzsimmons@swosu.edu](mailto:phillip.fitzsimmons@swosu.edu).





Untitled by Cathy Wells Watercolor, 18" x 24"

*Photographs by*  
*Tony Neely*

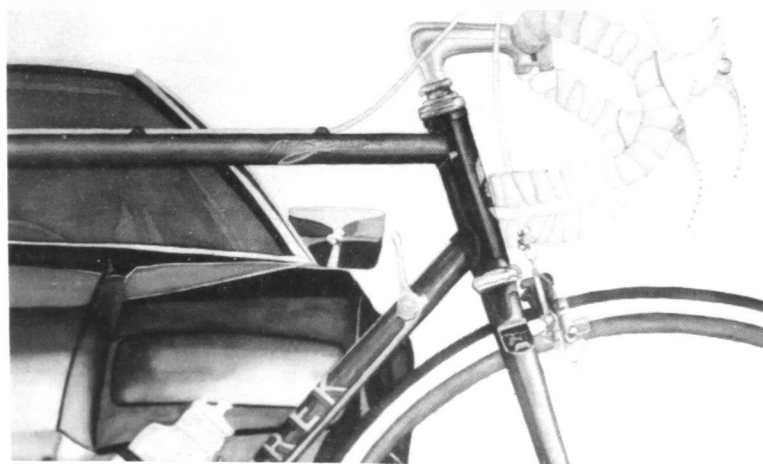
"Grandad's Aunt Anna"  
by Lisa Bradford  
Graphite, 19" x 24"



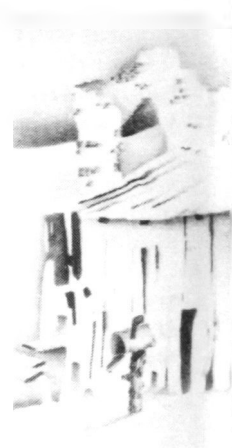
## SOSU Art Department Student Artists' Showcase



Untitled by Jay Hollopeter Mixed Media, 5" x 5"



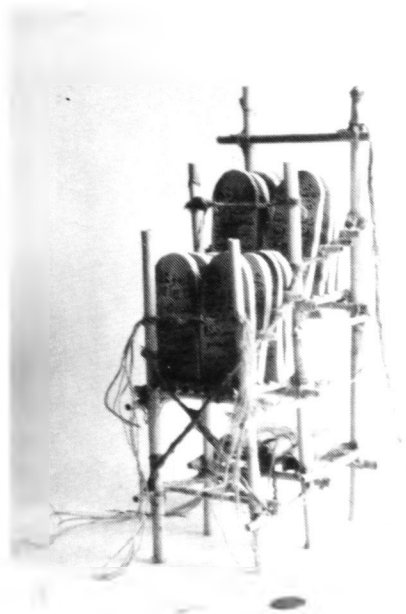
"Rides"  
by Rocky Shepherd  
Watercolor, 18" x 24"



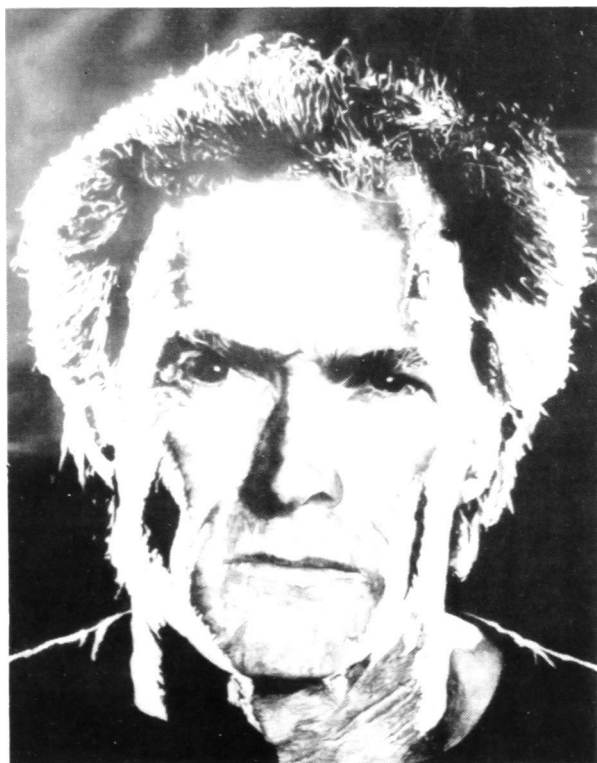
"Hidden Reality"  
by Becky Bond  
Acrylic, 18" x 24"



"Spiritual Renewal"  
by F. Bennie Nossaman, Jr.  
Bamboo & Clay, 10" x 6" x 2"



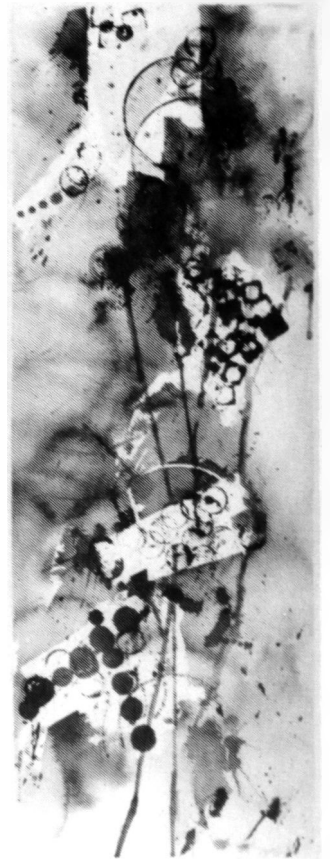
"Mr. Eastwood" by Rocky Shepherd Pencil, 17" x 24"



Untitled by Jay Hollopeter Graphite, 8" x 18"



"Intimidation"  
by Darsi Ward  
Watercolor,  
8" x 22"



"Perfect Love" by Lisa Bradford      Mixed Media, 11" x 14"

"I  
Never  
Read A  
WESTVIEW  
I Didn't  
Like!"

\$3.00/issue  
\$8.00/year (4 issues)

FOR  
SUBSCRIPTION

Contact:

Dr. Donald Hamm, Dean  
SOSU, School of Arts and Sciences  
100 Campus Drive  
Weatherford, Oklahoma 73096

The First  
National Bank  
of  
Custer City  
MEMBER F.D.I.C.



Custer City, Okla. 73639

Phone 593-2291

P.O. Box 100